

FEATURES & BENEFITS

CONSTRUCTION

Barrier-free design with an 18-gauge Type 304 satin finished stainless steel swirl bowl assembly mounted on a 14-gauge Type 304 stainless steel wall bracket. Unit includes an in-wall mounting frame, and front panel access for P-trap and stop.

VANDAL RESISTANT

The bubbler head, sensor, round bowl, drain strainer and bottom plate are locked in place, discouraging unwanted vandal tampering, and 30-second obstruction time-out to reduce tampering of sensor.

BUBBLER HEAD

Polished chrome-plated brass bubbler head with integral laminar flow prevents splashing while providing a superior flow pattern. The integral 11/16" dia. basin shank and stainless anti-rotation roll pin for vandal resistance strength. Shielded, angled stream opening provides a steady source of drinking water at .45 gpm.

BOTTLE FILLER

14-gauge Type 304 stainless steel bottle filler housing with touchless sensor operation and 1 gpm (3.78 L) laminar flow with 30-second obstruction time-out.

FOUNTAIN VALVES

Fountain incorporates touchless sensor operated stainless steel solenoid valves controlled by a transformer for hands free operation. A pressure regulator is used to adjust the bubbler flow according to incoming water pressures.

MOUNTING

Galvanized frame and 10 gauge surface plate provide the maximum mounting strength for single bubbler drinking fountains.

OPTIONS

- Mounting Plate: Model 6700R, on-wall mounting plate for model 1920HO.
- Mounting Plate: Model 6700, in-wall mounting plate for model 1920HO.
- Remote Drinking Fountain Water chiller: Model HCR8, 8 gph (30.3 L) remote water chiller provides instantaneous cooling to meet a continuous demand for chilled water.
- Bottle Filler Stand: Model BTL1001, add-on stainless steel stand to place bottle on when 1920 bottle filler is used.

For more information, visit www.hawscos.com or call (888) 640-4297.



REQUIRED MODELS

1001MSHO / MTGFR.DF1 / 1920HO / BP15

Order these items to make up the Model 1001MSHO-1920HO fountain with stainless steel back panel, bottle filler with stainless steel back plate, and fountain mounting frame shown above.

FOR INDOOR USE ONLY

SPECIFICATIONS

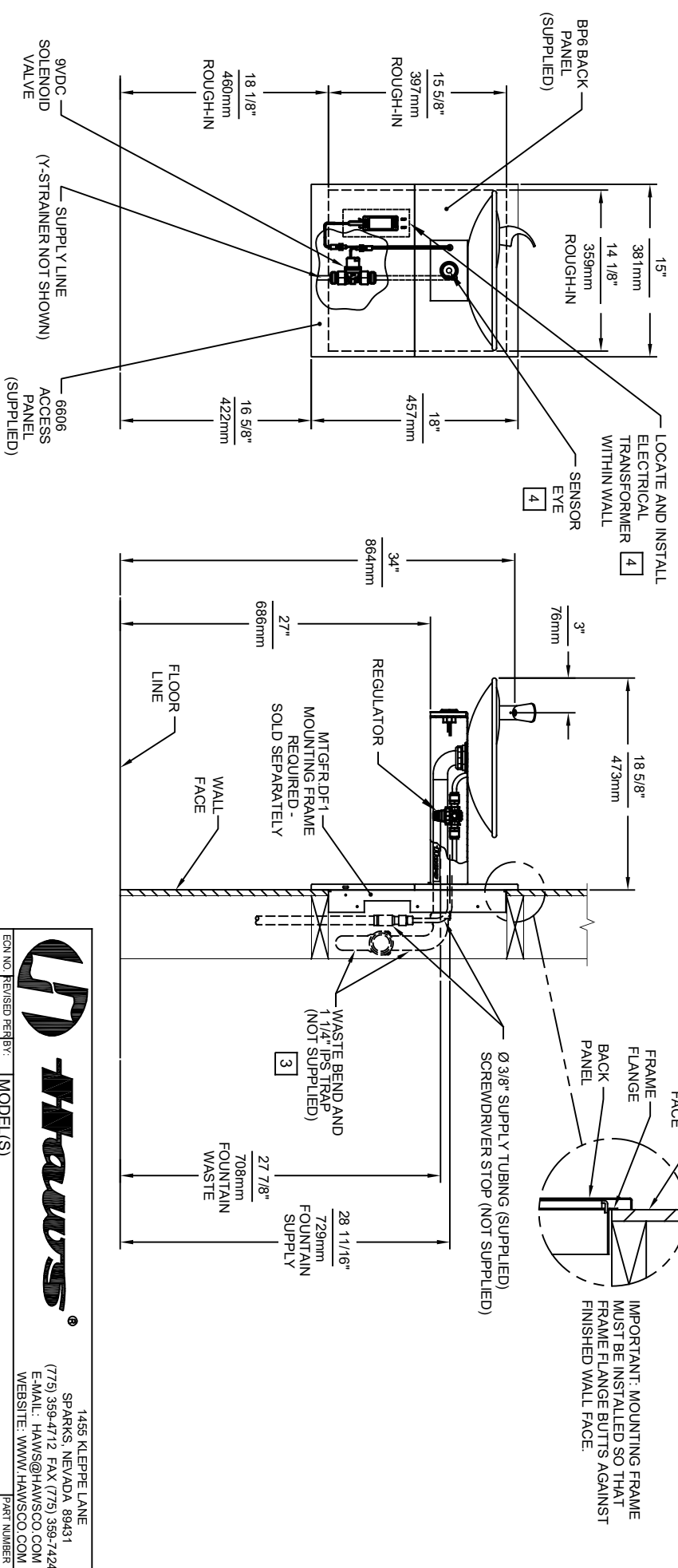
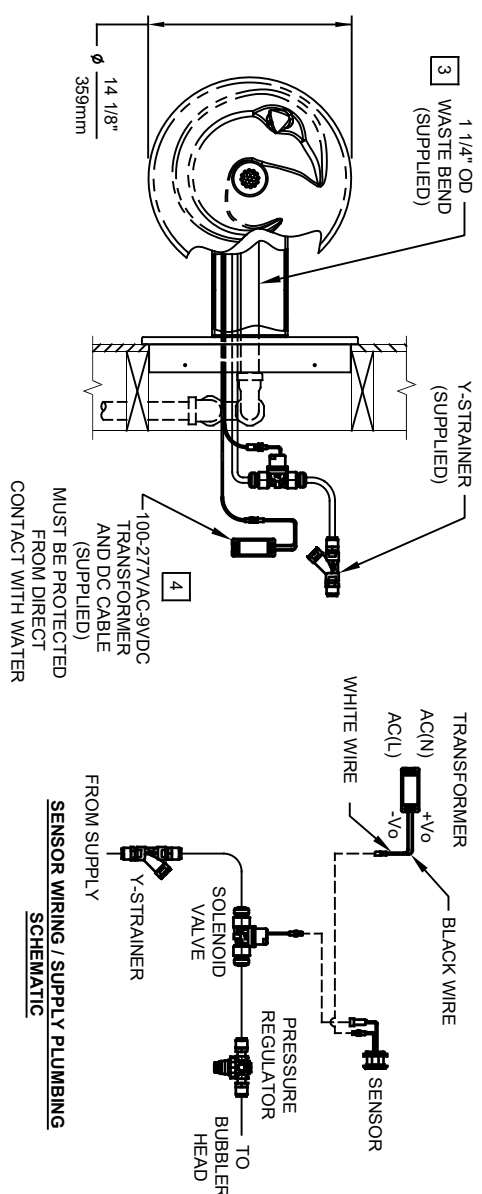
Model 1001MSHO-1920HO ADA wall mounted motion activated vandal-resistant drinking fountain and bottle filler shall include an 18 gauge Type 304 Stainless Steel satin finish basin with integral swirl design, 14 gauge Type 304 Stainless Steel wall bracket and bottle filler bracket, stainless steel satin finish back and access panels allowing for front access of P-trap and stop, in-wall mounting frame, 100% lead-free waterways, 1 gpm (3.78L) laminar flow bottle filler, touchless sensor operated stainless steel solenoid valves with 30-second obstruction time-out controlled by a transformer, polished chrome-plated brass vandal-resistant bubbler head with integral laminar anti-squirt flow, chrome-plated brass vandal-resistant waste strainer, vandal-resistant bottom plates, and 1-1/4"O.D. (3.2cm) waste pipe. Manufactured to be lead-free by all known definitions including NSF/ ANSI/CAN 61-Section 9, NSF/ANSI/ CAN 372, California Proposition 65, and the Federal Safe Drinking Water Act. Product is compliant to California Health and Safety Code 116875 (AB 1953-2006), and 116876 (AB 100) "NSF/ANSI/CAN 61: Q ≤ 1".


The bottle filler requires a mounting plate; either the Haws model 6700 in-wall or the 6700R on-wall support plate.



NOTES:

1. HOLD ROUGH-IN DIMENSIONS $\pm 1/8"$ (3.2mm).
2. WHEN INSTALLING THIS UNIT, LOCAL, STATE, OR FEDERAL CODES SHOULD BE ADHERED TO FOR INSTALLATION DIMENSIONS (LOCATIONS), WASTE AND SUPPLY REQUIREMENTS OTHER THAN SHOWN.
3. INSTALLER MUST PROVIDE TRAP FOR PROPER INSTALLATION.
4. REFER TO 1RKHO.H OPERATION AND MAINTENANCE INSTRUCTIONS FOR TRANSFORMER AND SENSOR SETUP.



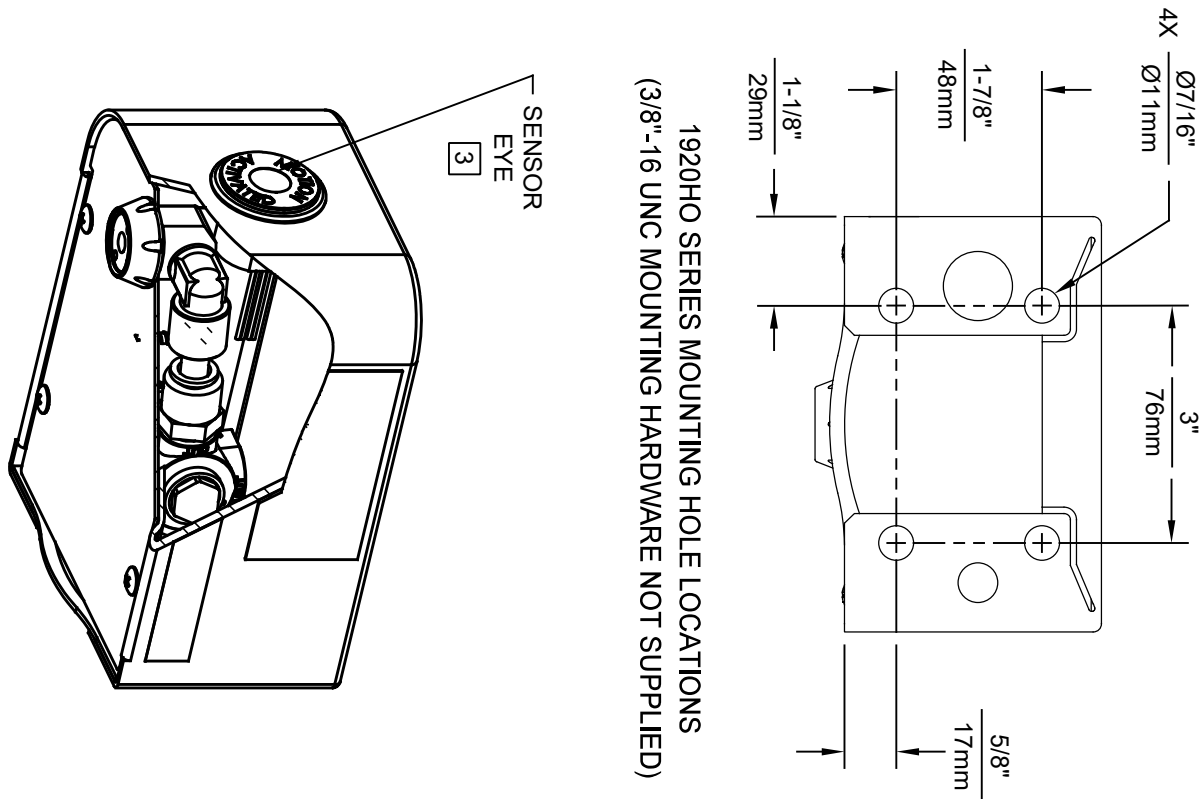
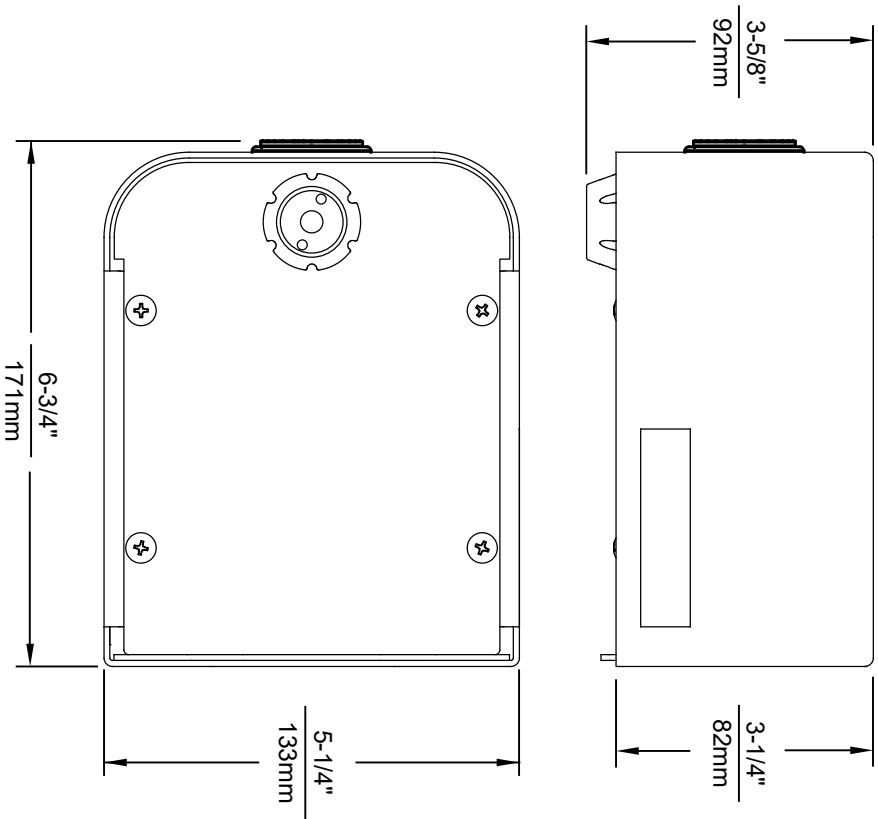
**Haws**

1456 KLEPPE LANE
SPARKS, NEVADA 89431
(775) 359-4712 FAX (775) 359-7424
E-MAIL: HAWWS@HAWSCO.COM
WEBSITE: WWW.HAWSCO.COM

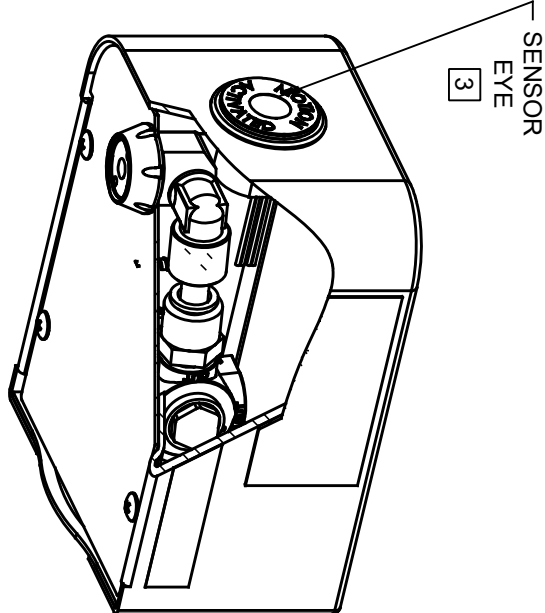
ECN NO. REVISED PERBY: MODEL(S)
ECN 5733 FV
DATE: 09/28/21 CHKD: FV
APPROVED: FV
SCALE: 1:14 DRAWING TYPE: INSTALLATION
SIZE: A SHEET 1 OF 1

PART NUMBER
0510002021.D
REVISION: 1

1001MSHO




1920HO SERIES MOUNTING HOLE LOCATIONS
(3/8"-16 UNC MOUNTING HARDWARE NOT SUPPLIED)



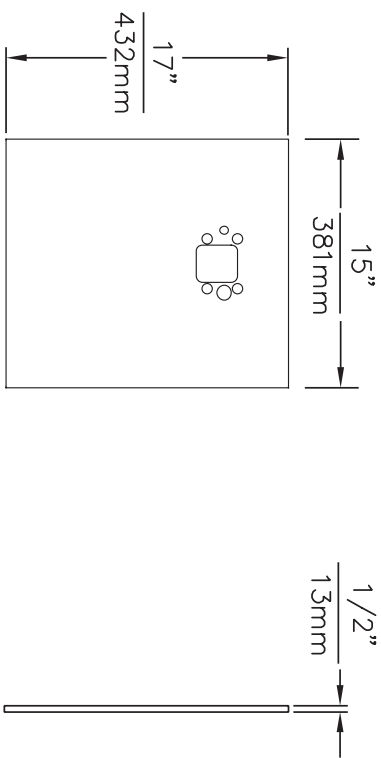
NOTES:

1. SEE SEPARATE INSTALLATION DRAWINGS FOR MOUNTING PLATES AND BACKPANELS
2. WHEN INSTALLING THIS UNIT, LOCAL, STATE OR FEDERAL CODES SHOULD BE ADHERED TO FOR INSTALLATION LOCATIONS, WASTE AND SUPPLY REQUIREMENTS OTHER THAN SHOWN.
- 3 REFER TO 1RKHO.H OPERATION & MAINTENANCE INSTRUCTIONS FOR SENSOR SETUP.

**Haws**[®]

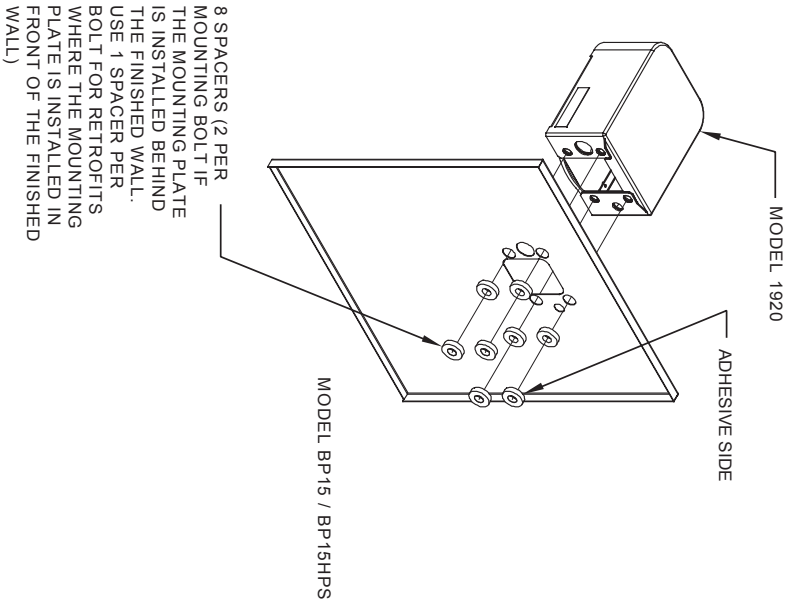
1455 KLEPPE LANE
SPARKS, NEVADA 89431
(775) 359-4712 FAX (775) 359-7424
E-MAIL: HAWS@HAWS.CO.COM
WEBSITE: WWW.HAWS.CO.COM

EQUIPMENT		REVISION	
DATE	BY	DATE	BY
05/10/01	063.D	05/10/01	063.D
DRAWN BY		CHECKED BY	
B.M.		B.M.	
APPROVED		DATE	
05/10/01		05/10/01	
SCALE: 1/4" = 1"		INSTALLATION	
SIZE: A		SHEET 1 OF 6	




MODEL BP15 / BP15HPS

- NOTES:
1. WHEN INSTALLING THIS UNIT, LOCAL, STATE OR FEDERAL CODES SHOULD BE ADHERED TO.

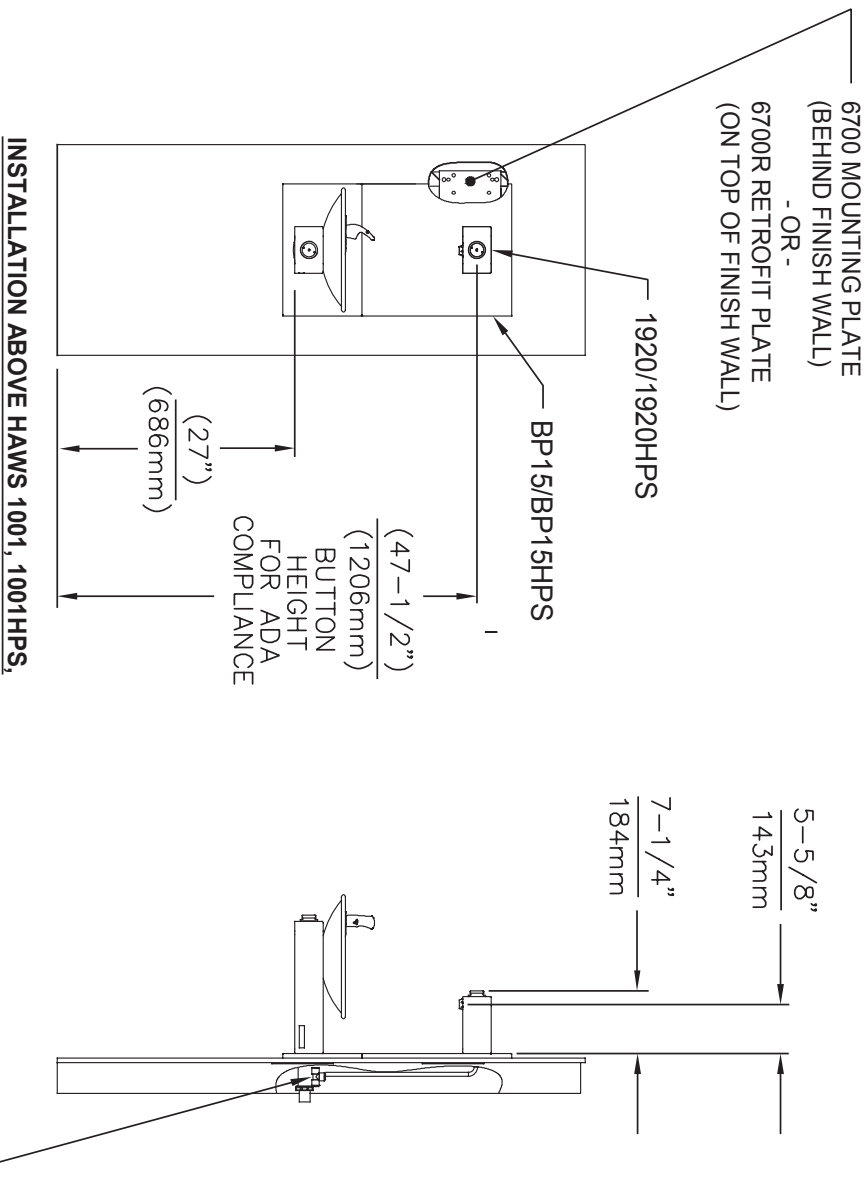


INSTALLATION OVER SINGLE FOUNTAIN
SHOWN FROM REAR

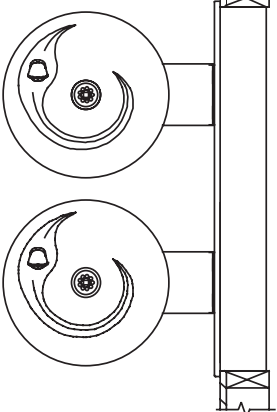
**Haws**[®]



1455 KLEPPE LANE
SPARKS, NEVADA 89431
(775) 359-4712 FAX (775) 359-7424
E-MAIL: HAWS@HAWS.CO.COM
WEBSITE: WWW.HAWS.CO.COM

ECONO	REVISED PER BR:	MODEL(S)	PART NUMBER
DRAWN	DATE	DATE	1001-20
DESIGNED	DATE	DATE	1001-20
APPROVED	DATE	DATE	1001-20
SCALE: 1:1		DRAWING TYPE:	INSTALLATION
SIZE: A		SHEET: 2 OF 2	



- * IF YOUR FOUNTAIN IS THIS STYLE USE THESE DIMENSIONS
1. SEE SEPARATE INSTALLATION DRAWINGS FOR MOUNTING PLATES AND BACKPANELS
 2. WHEN INSTALLING THIS UNIT, LOCAL, STATE OR FEDERAL CODES SHOULD BE ADHERED TO FOR INSTALLATION LOCATIONS, WASTE & SUPPLY REQUIREMENTS OTHER THAN SHOWN.



		1455 KLEPPE LANE SPARKS, NEVADA 89431 (775) 359-4712 FAX (775) 359-7424 E-MAIL: HAWS@HAWSCO.COM WEBSITE: WWW.HAWSCO.COM	
			
ECN: REVISED PER BY:		MODEL(S)	
DRAWN:	ECN:	GC	
DATE:	DATE:	QC'D:	
10/31/17	10/31/17		
APPROVED:	DATE:		
		SCALE: N/A	
		DRAWING TYPE: INSTALLATION	
		SIZE: A	
		SHEET 1 OF 2	
		PART NUMBER: 1001-20	
		REVISION: 0A.1	