



INSTALLATION, OPERATION & MAINTENANCE INSTRUCTIONS

1455 Kleppe Lane ♦ Sparks, NV 89431-6467 ♦ (775) 359-4712 ♦ Fax (775) 359-7424
E-mail: haws@hawsco.com ♦ website: www.hawsco.com

No. 0580001162 (1)

Model VRKHO6 SENSOR FOR RKHO

NOTE TO INSTALLER: Please leave this information with the Maintenance Department.

LIMITED WARRANTY

HAWS® warrants that all of its products are guaranteed against defective material or poor workmanship for a period of **one year from date of shipment**. HAWS liability under this warranty shall be discharged by furnishing without charge F.O.B. HAWS Factory any goods, or part thereof, which shall appear to the Company upon inspection to be of defective material or not of first class workmanship, provided that claim is made in writing to company within a reasonable period after receipt of the product. Where claims for defects are made, the defective part or parts shall be delivered to the Company, prepaid, for inspection. HAWS will not be liable for the cost of repairs, alterations or replacements, or for any expense connected therewith made by the owner or his agents, except upon written authority from HAWS, Sparks, Nevada. HAWS will not be liable for any damages caused by defective materials or poor workmanship, except for replacements, as provided above. Buyer agrees that Haws has made no other warranties either expressed or implied in addition to those above stated, except that of title with respect to any of the products or equipment sold hereunder and that HAWS shall not be liable for general, special, or consequential damages claimed to arise under the contract of sale.

The emergency equipment manufactured by HAWS is warranted to function if installation and maintenance instructions provided are adhered to. The units also must be used for the purpose, which they were intended. This product is intended to supplement first-aid treatment. Due to widely varying conditions HAWS cannot guarantee that the use of this emergency equipment will prevent serious injury or the aggravation of existing or prior injuries.

NO OTHER WARRANTIES EXPRESSED OR IMPLIED ARE AUTHORIZED, PROVIDED OR GIVEN BY HAWS.

SHOULD YOU EXPERIENCE DIFFICULTY WITH THE INSTALLATION OF THIS MODEL, PLEASE CALL:

1-800-766-5612

FOR PARTS CALL:

1-800-758-9378

**(U.S.A. AND CANADA ONLY) MONDAY-THURSDAY: 6:00 A.M. – 4:00 P.M. PST
FRIDAY: 6:00 A.M – 1:00 P.M. PST**

Recommended Tools: Adjustable wrench and 5/64" hex key wrench.

INSTALLATION PROCEDURE

Step 1: Remove grille and shut off water supply. Actuate sensor to relieve pressure in the system. Then, disconnect power from plug-in or hardwire transformer.

Step 2: Remove bottom plate from fountain using 5/64" Hex key wrench.

Step 3: Disconnect electrical connectors leading to transformer and solenoid valve.

Step 4: Use adjustable wrench to remove brass nut from sensor threads taking care not to damage or lose any components. Remove cup washer and flange washer. Discard old sensor.

Step 5: Ensure O-ring is on replacement sensor. Slide flange washer onto replacement sensor. Using flange washer as a guide, align replacement sensor into mounting hole. Slide cup washer onto sensor. Carefully tighten sensor onto mounting hole using brass nut. Do not overtighten and damage threads.

Step 6: Reconnect electrical connectors to transformer and solenoid valve.

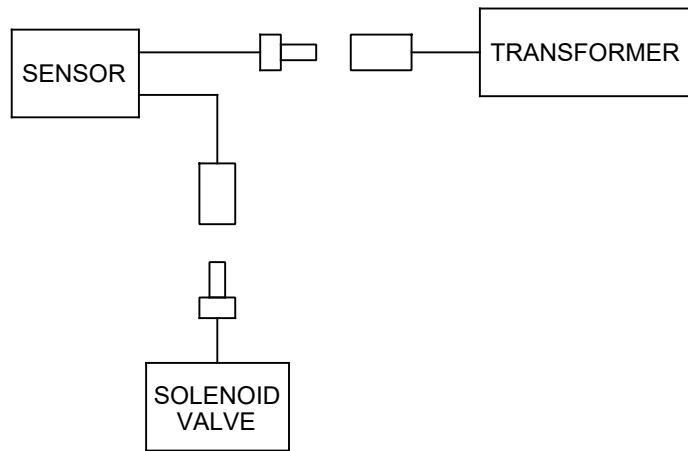
Step 7: Reconnect power to transformer. Turn on water supply and adjust the bubbler's flow using the black regulator mounted next to the solenoid valve. Clockwise adjustment increases flow and counterclockwise decreases flow. Finally, check fountain for leaks.

Step 8: Clear the area in front of the sensor. Allow the sensor to calibrate for at least 10 seconds before operating.

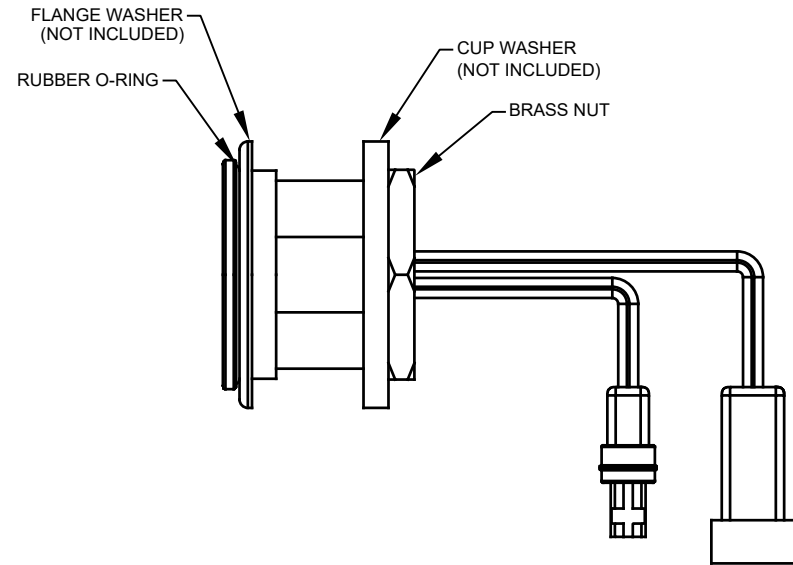
When the sensor is activated continuously for 30 seconds, the sensor will automatically shut off the water supply to the bubbler. To resume activation, remove obstruction and reactivate the sensor. This feature prevents flushing of water due to unintentional activation or vandalism.

Step 9: Re-install bottom plate and grille.


SENSOR/SOLENOID TROUBLESHOOTING	
PROBLEM	REPAIR CHECKLIST
1. Insufficient bubbler flow.	<ul style="list-style-type: none"> a. Check that screwdriver stop is wide open. Direction can be counterclockwise or clockwise depending on style of shut-off valve. b. Verify minimum 30 psi supply pressure. c. Clean inlet strainer (if one is present).
3. No bubbler flow – red light in the sensor does not flash once when user’s hands are within the sensor’s range	<ul style="list-style-type: none"> a. Unit is in Security Mode. b. Sensor is picking up reflections from a foreign object. Eliminate the source of reflection.
4. No bubbler flow – red light in the sensor flashes once when user’s hands are within sensor range.	<ul style="list-style-type: none"> a. Connectors between electronic unit and solenoid are disconnected. Reconnect the connectors. b. Debris or scale in solenoid. Shut off water and power. Unscrew solenoid, pull out the plunger and spring from the solenoid and clean them. Use scale remover if needed. When replacing the plunger, ensure the spring is oriented vertically. c. The central orifice in the diaphragm is plugged or the diaphragm is torn. Clean the orifice or replace the diaphragm. d. The water supply pressure is higher than 115 psi. Reduce the supply water pressure.
4. Continuous bubbler flow – sensor flashes once when user’s hands are within the sensor’s range.	<ul style="list-style-type: none"> a. Debris or scale in solenoid diaphragm. Clean the orifice or replace diaphragm per 4b-c.
5. Continuous bubbler flow – red light in the sensor does not flash once when user’s hands are within sensor range.	<ul style="list-style-type: none"> a. Sensor is dirty or covered. Clean or eliminate cause of interference. In this event, the security time will stop flow. b. Sensor is picking up reflections from the washbasin or another object. Decrease the range or eliminate the cause of reflection.
6. Repeated clogs in strainer.	<ul style="list-style-type: none"> a. Install water filter in supply line.
7. Bubbler does not activate.	<ul style="list-style-type: none"> a. Check wiring harness. Replace if necessary. b. Check solenoid valve. Replace if necessary. c. Replace sensor. d. Check transformer for 9V at output terminals; replace if necessary.



VRKHO6 WIRING SCHEMATIC



SENSOR ASSEMBLY

		1455 KLEPPE LANE SPARKS, NEVADA 89431 (775) 359-4712 FAX (775) 359-7424 E-MAIL: HAWS@HAWS.CO.COM WEBSITE: WWW.HAWS.CO.COM	
		ECN NO. 5649 DRAWN: BJM APPROVED: BJM	REVISED PER ECN: 5649 DATE: 02/12/21 DATE: 02/22/21
PART NUMBER 0580001162.D			REVISION 1
SCALE: N/A	DRAWING TYPE: INSTALLATION	SIZE: A	SHEET 4 OF 4