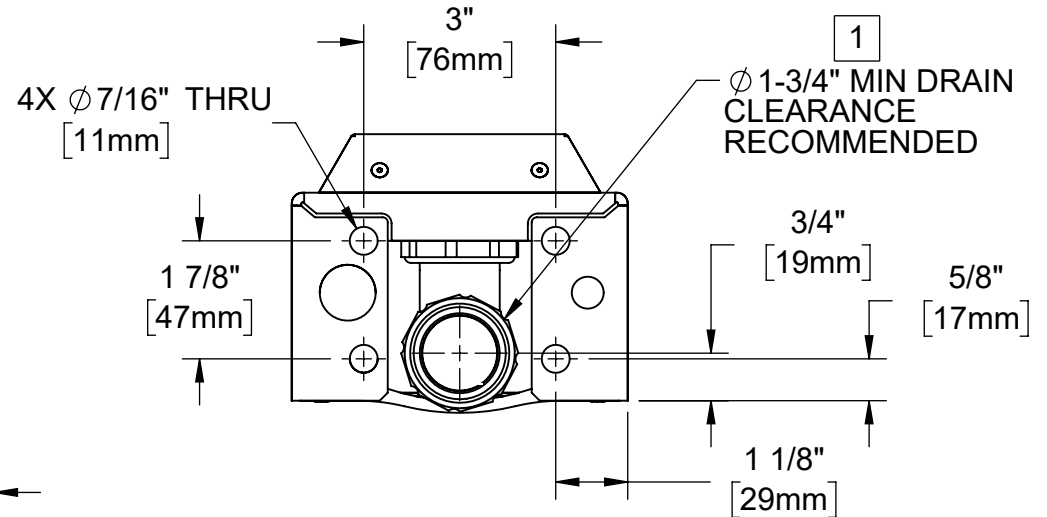
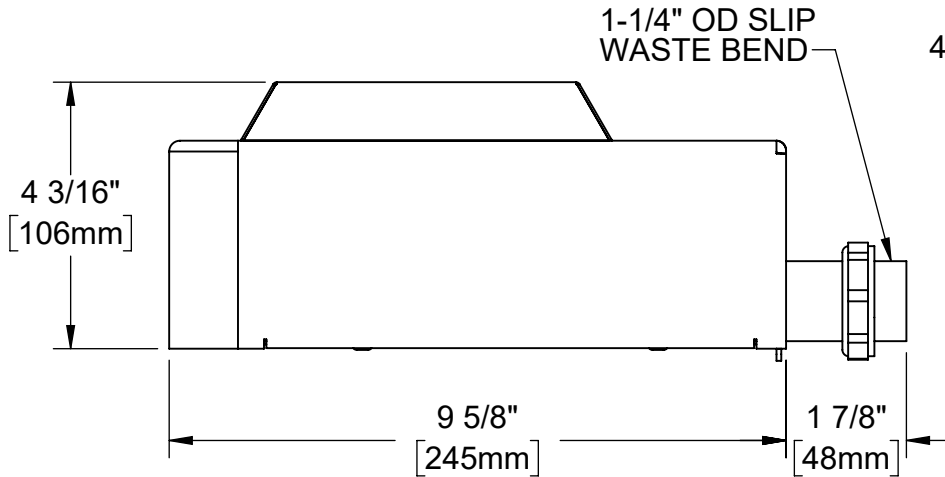
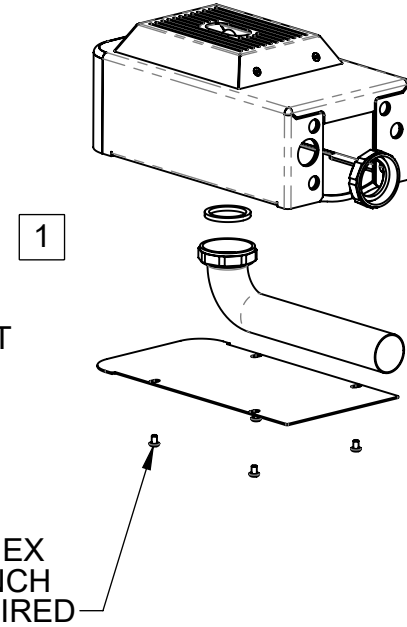
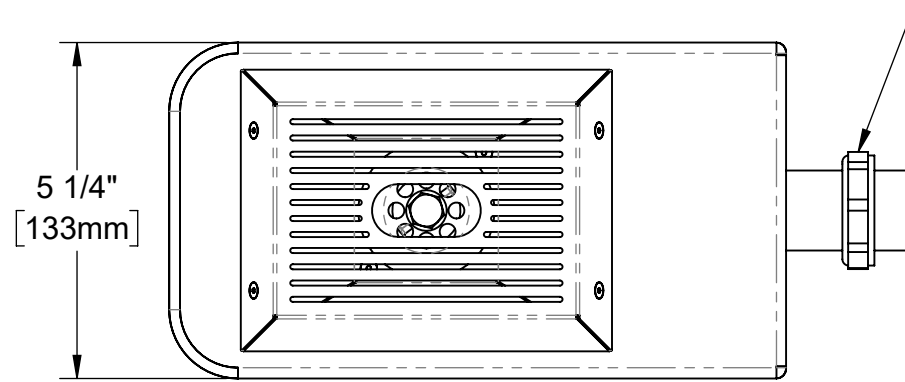



NOTES:

- 1 ASSEMBLE DRAIN WITH NUT AND WASHER AS SHOWN. AFTER INSTALLATION, CAREFULLY SEAL WALL AROUND DRAIN.
2. WHEN INSTALLING THIS UNIT, LOCAL, STATE, OR FEDERAL CODES SHOULD BE ADHERED TO. INSTALL A TRAP IN THE WASTE LINE AND A SCREWDRIVER STOP IN THE SUPPLY LINE IF REQUIRED.
3. OPTIONAL HAWS MOUNTING PLATE MODEL 6700 (NOT SHOWN) MAY BE USED WITH THIS MODEL. OPTIONAL HAWS BACK PANEL MODEL BP6 (NOT SHOWN) MAY BE USED WITH THIS MODEL. SEE SEPARATE INSTALLATION DRAWINGS FOR MOUNTING PLATE OR BACK PANEL INSTALLATION IF REQUIRED.
5. 3/8" DIAMETER BOLTS OR SCREWS (NOT SUPPLIED) ARE RECOMMENDED.



		1455 KLEPPE LANE SPARKS, NEVADA 89431 (775) 359-4712 FAX (775) 359-7424 E-MAIL: HAWS@HAWSO.COM WEBSITE: WWW.HAWSO.COM			
		ECN: 5607 REV. ECN: 5667 DRAWN: DP APPROVED: DP	BY: DP DATE: 10/28/20 CHKD: FV DATE: 02/22/21	MODEL(S) 6468	PART NUMBER 0580001128 REVISION 2
© 2021 Haws Corporation - All Rights Reserved. HAWS® and other trademarks used in these materials are the exclusive property of Haws Corporation.		SCALE: 14	DRAWING TYPE: INSTALLATION	SIZE: A	SHEET 1 OF 1