



# model 1117L-1920

ADA Adjustable Vandal-Resistant Fountain and Bottle Filler

## FEATURES & BENEFITS

### ADA COMPLIANCE

ADA-compliant bottle filling station and dual-height high/low drinking fountain required for wheel chair use, and for the standing person.

### CONSTRUCTION

One-piece drinking fountains with low-profile design made of 14 gauge Type 304 stainless steel with 1/4" (.6 cm) thick stainless back plates welded in, and vandal-resistant stainless bottom plates.

### FOUNTAIN VALVES

The push-button activated valves have all stainless steel bodies, with chrome plated brass push button assemblies which allow for front access to water stream adjustment, water control cartridge, and water supply strainer replacement without having to go through the bottom plate. Operating pressure range of 30 to 90 psi (2.1 to 6.2 bar)

### BUBBLER HEADS

Polished chrome-plated brass bubbler head with integral 1 1/16" dia. basin shank and stainless anti-rotation roll pin for vandal resistance strength. Shielded, angled stream opening provides a steady, sanitary source of drinking water at .45 gpm

### MOUNTING

3/16" (.47 cm) steel mounting plate with supplied mounting hardware for a solid unit base allows for easy installation to a framed wall.

### BOTTLE FILLER

Vandal-resistant, 14-gauge Type 304 stainless steel bottle filler housing with push button operation and 1 gpm (3.78 L) laminar flow.

### VANDAL-RESISTANT

The bubbler heads, push buttons, drain strainers and bottom plates are locked in place, discouraging unwanted vandal tampering.

## OPTIONS

Mounting Plate: Model 6700, in-wall mounting plate for model 1920.

Mounting Plate: Model 6700R, on-wall mounting plate for model 1920.

Bottle Filler Stand: Model BTL1107, add-on stainless steel stand to place bottle on when 1920 bottle filler is used.

Support Frame: Model 6800 In-wall floor mounted fixture support legs, welded steel 4-bolt floor flanges, and supplied with 'U' bolts and hardware.



## REQUIRED MODELS

### 1117L / 6717 / 1920 / BP32

Order these items to make up the Model 1117L-1920 adjustable height dual fountain with steel in-wall mounting plate, stainless steel bottle filler and stainless steel back panel shown above.

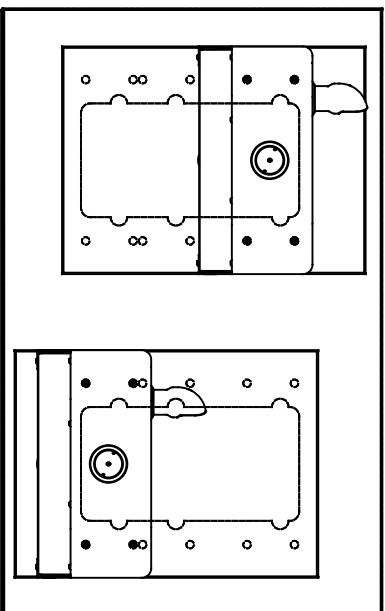
## SPECIFICATIONS

Model 1117L-1920 low profile vandal-resistant wall mounted ADA drinking fountain and bottle filler shall include dual 14 gauge Type 304 Stainless Steel satin finish basins with integral 1/4" (.6 cm) thick stainless steel back plates, vandal-resistant push button operated stainless steel valves with front-accessible cartridge, in-line strainer and flow adjustment provide 100% lead free waterways, polished chrome-plated brass vandal-resistant bubbler heads, 1 gpm (3.78 L) laminar flow bottle filler, polished chrome-plated brass vandal-resistant waste strainers, vandal-resistant bottom plates, stainless steel satin finish back panels, adjustable mounting allowing either basin to be high or low, in-wall mounting plate, and 1-1/4" NPT concealed all cast-brass traps. The patented design allows the unit to be mounted to meet ADA or Child ADA specifications. Manufactured to be lead-free by all known definitions including NSF/ ANSI/CAN 61-Section 9, NSF/ANSI/CAN 372, California Proposition 65, and the Federal Safe Drinking Water Act. Product is compliant to California Health and Safety Code 116875 (AB 1953-2006), and NSF/ ANSI/CAN 61: Q ≤ 1.



**NOTES:**

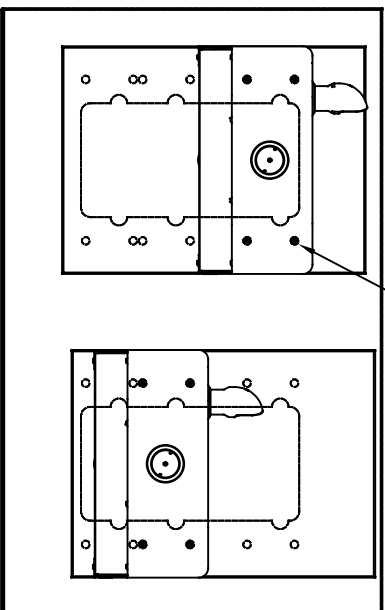
- 6 FIGURES 1 AND 2 ARE REVERSIBLE. CAN BE RIGHT OR LEFT SIDE HIGH.
- 7 USE SHADED HOLES TO MOUNT AT INDICATED POSITIONS BASED ON COMBINATION SELECTED (FIGS. 1 THRU 3).
- 8. REFER TO SHEET 1 OF 2 NOTE 4 FOR INSTALLED FOUNTAIN DIMENSIONS.



6

FIGURE 1.

ADULT STANDING/CHILD WHEELCHAIR



6

FIGURE 2.

ADULT STANDING/ADULT WHEELCHAIR

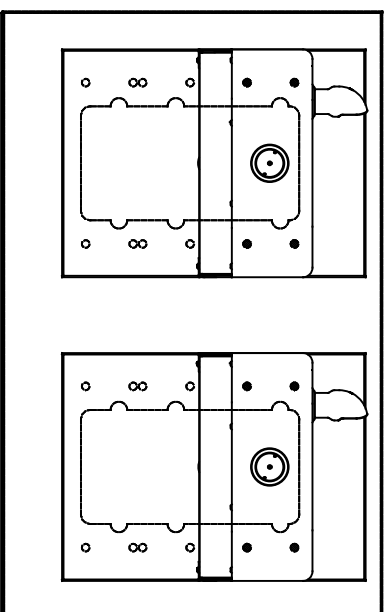


FIGURE 3.

ADULT STANDING/ADULT STANDING

# BOWL MOUNTING PATTERNS

		<b>Haws</b>	
1456 KLEPPE LANE SPARKS, NEVADA 89431 (775) 359-4712 FAX (775) 359-7424 E-MAIL: HAWS@HAWS.CO.COM WEBSITE: WWW.HAWS.CO.COM		MODEL(S)  1117L	
ECN NO. REVISED PER BY:	ECN: 5527 FV	DATE:	CHKD:
DRAWN:	DATE:	DATE:	DP
CHECKED:	DATE:	DATE:	DP
APPROVED:	DATE:	SCALE:	DRAWING TYPE:
FV	04/02/20	1:2	INSTALLATION
PART NUMBER 0002080223.D		SIZE:	SHEET 2 OF 2
REVISION 16			

NOTES:

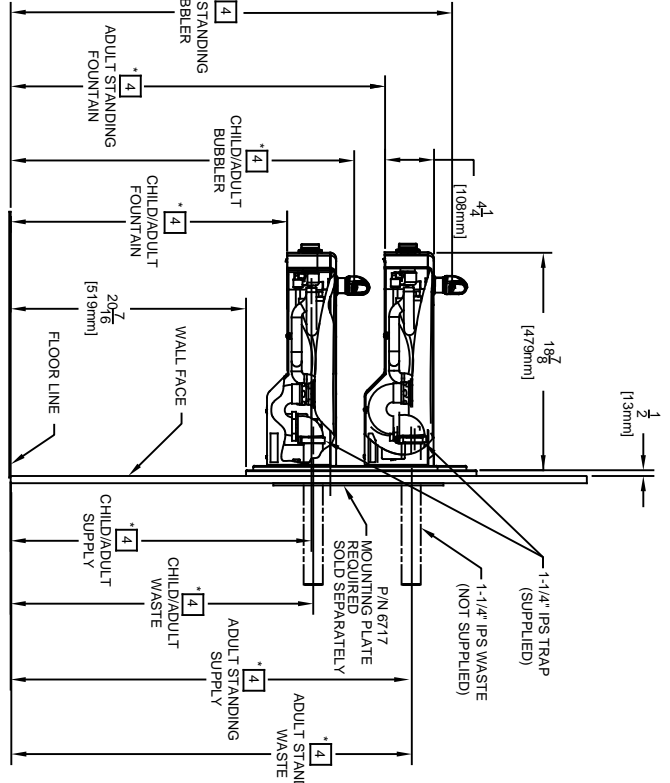
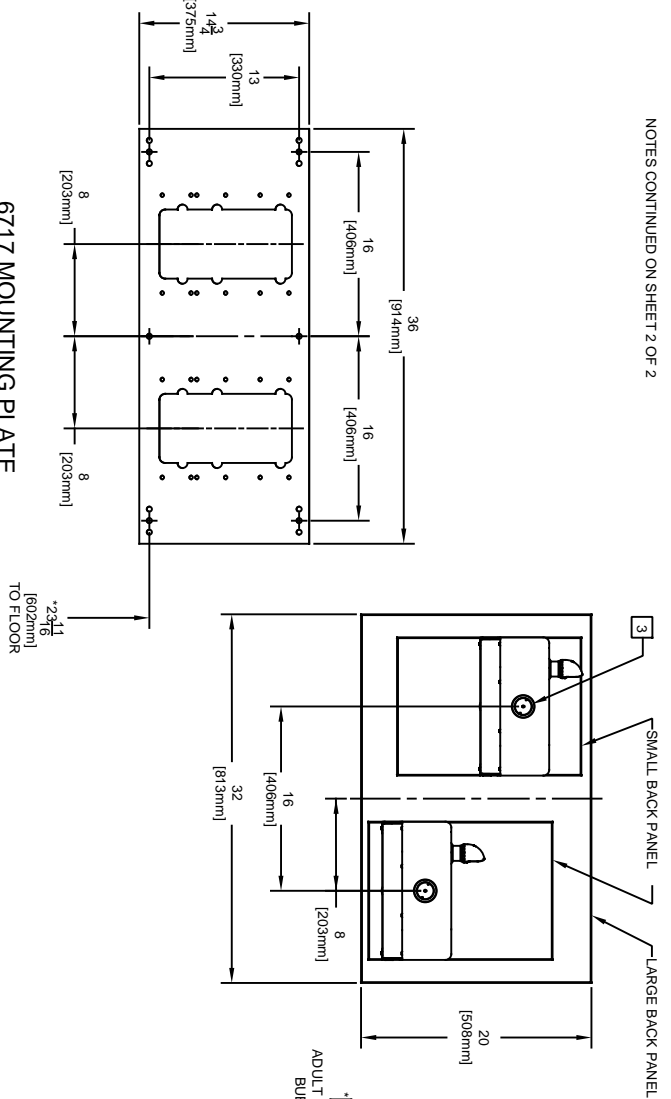
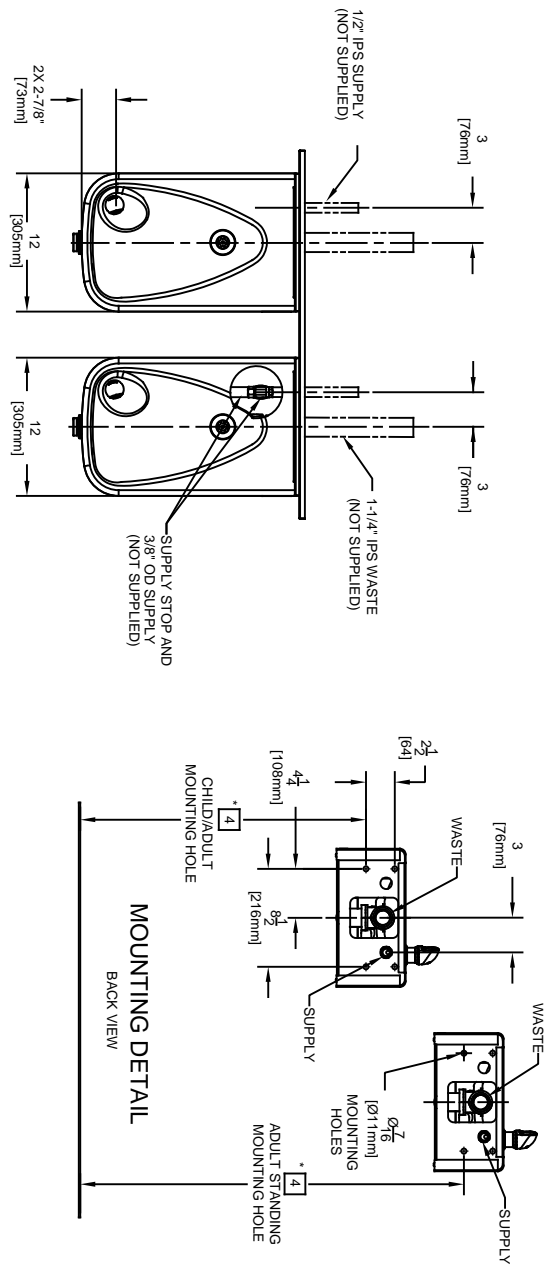
1. HOLD ROUGH-IN DIMENSIONS  $\pm \frac{1}{8}$ " (3.2MM).
2. WHEN INSTALLING THIS UNIT, LOCAL, STATE OR FEDERAL CODES SHOULD BE ADHERED TO. FOR INSTALLATION HEIGHTS OTHER THAN SHOWN, DIMENSIONS MARKED (\*) MUST BE ADJUSTED ACCORDINGLY.
3. REFER TO 5874 SERIES OPERATION AND MAINTENANCE MANUAL FOR PUSH BUTTON AND VALVE INSTALLATION/MAINTENANCE INSTRUCTIONS.
4. ROUGH IN DIMENSIONS FOR FOUNTAIN HEIGHTS:

- CHILD WHEELCHAIR HEIGHT: SEE SHIT 2 FIG 1  
 WASTE: 26-1/4" (667mm)  
 SUPPLY: 26-7/8" (684mm)  
 MOUNTING HOLE: 24-13/16" (630mm)  
 FOUNTAIN: 24" (610mm)  
 BUBBLER: 29-7/8" (756mm)
- ADULT WHEELCHAIR HEIGHT: SEE SHIT 2 FIG 2  
 WASTE: 29-1/4" (743mm)  
 SUPPLY: 29-1/8" (740mm)  
 MOUNTING HOLE: 27-13/16" (706mm)  
 FOUNTAIN: 27" (686mm)  
 BUBBLER: 32-7/8" (832mm)

- STANDING ADULT HEIGHT: SEE SHIT 2 FIG 3  
 WASTE: 34-3/4" (883mm)  
 SUPPLY: 34-5/8" (879mm)  
 MOUNTING HOLE: 33-5/16" (846mm)  
 FOUNTAIN: 32-1/5" (826mm)  
 BUBBLER: 38-3/8" (972mm)

REFER TO MODEL 1117L INSTALLATION DRAWING SHEET 2 OF 2 (ON HAWS WEBSITE WWW.HAWS.CO) FOR PERMISSIBLE BOWL MOUNTING PATTERNS. TWO WHEELCHAIR HEIGHT FOUNTAINS CANNOT BE MOUNTED SIDE BY SIDE PER ANSI A117.1.

NOTES CONTINUED ON SHEET 2 OF 2



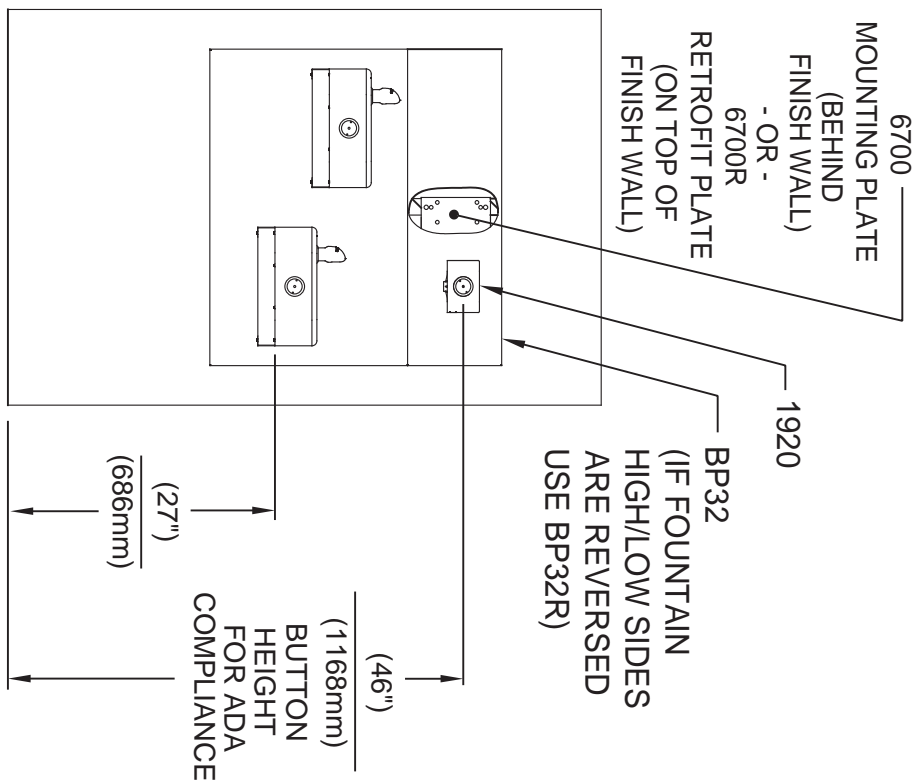
1456 KLEPPE LANE  
 SPARKS, NEVADA 89431  
 (775) 359-4712 FAX (775) 359-7424  
 E-MAIL: HAWS@HAWS.CO.COM  
 WEBSITE: WWW.HAWS.CO.COM

ECN NO. REVISED PER BY: MODEL(S)  
 ECN: 5527 EV: 1117L

DRAWN: DATE: CHKD:  
 C.FENNER: 10/08 DP

APPROVED: DATE: SCALE: 1:2 DRAWING TYPE: INSTALLATION  
 EV: 04/02/20

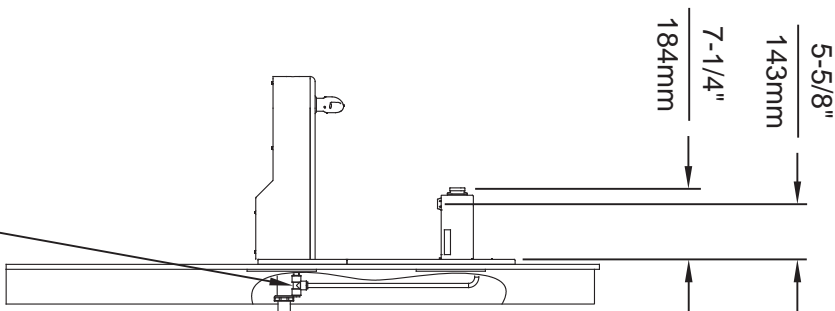
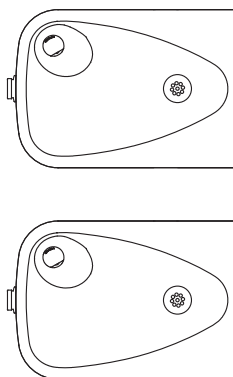
PART NUMBER: 0002080223.D  
 REVISION: 16



**INSTALLATION ABOVE HAWS 1117L, H1117.8**

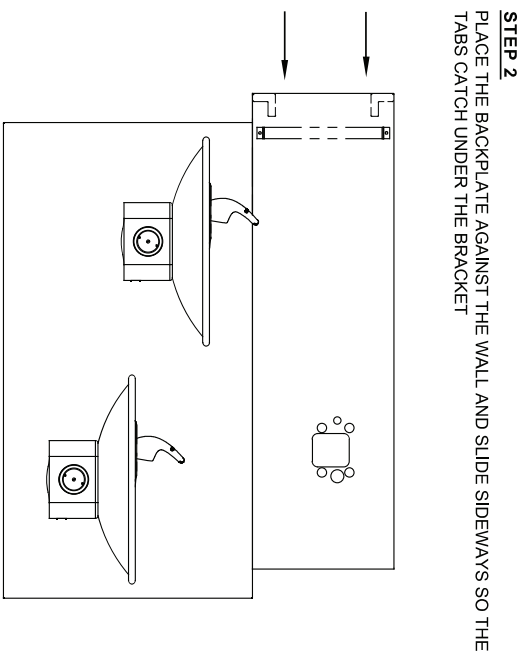
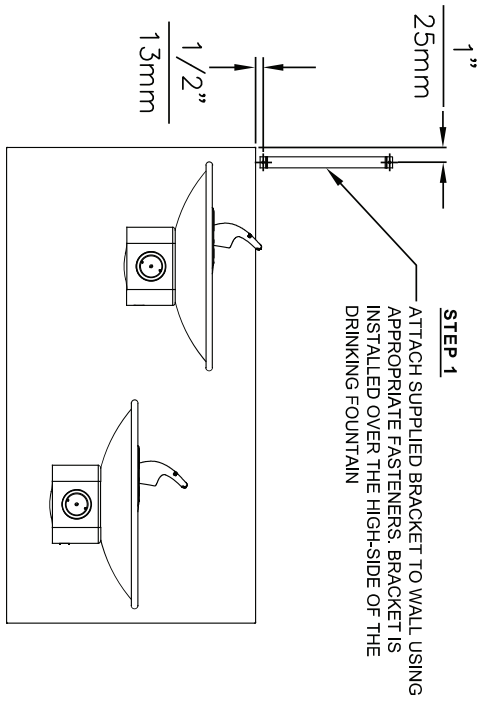
\* IF YOUR FOUNTAIN IS THIS STYLE USE THESE DIMENSIONS

1. SEE SEPARATE INSTALLATION DRAWINGS FOR MOUNTING PLATES AND BACKPANELS
2. WHEN INSTALLING THIS UNIT, LOCAL, STATE OR FEDERAL CODES SHOULD BE ADHERED TO FOR INSTALLATION LOCATIONS, WASTE & SUPPLY REQUIREMENTS OTHER THAN SHOWN.



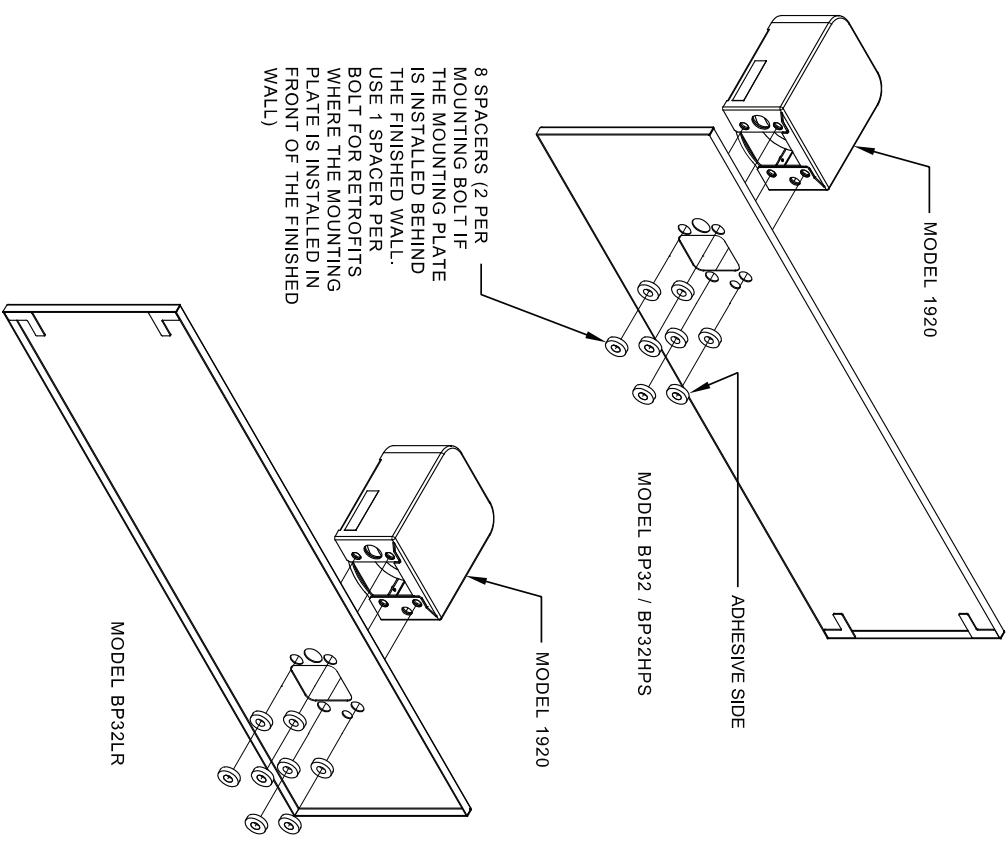
3/8" O.D. SUPPLY TUBING AND 3/8" O.D. PUSH-IN TEE SUPPLIED. (CONNECT TO FOUNTAIN SUPPLY LINE)

		<b>Haws</b>	
EQ# NO. 1920	REVISED PER BY: F.V.	MODEL(S)	1920
DRAWN BY: F.V.	DATE: 06/14/20	SCALE: N/A	DRAWING TYPE: INSTALLATION
APPROVED: F.V.	DATE: 06/14/20	SCALE: N/A	DRAWING TYPE: INSTALLATION
1455 KLEPPE LANE SPARKS, NEVADA 89431 (775) 359-4712 FAX (775) 359-7424 E-MAIL: HAWS@HAWS.CO.COM WEBSITE: WWW.HAWS.CO.COM		PART NUMBER 0510000490.D REVISION 6	



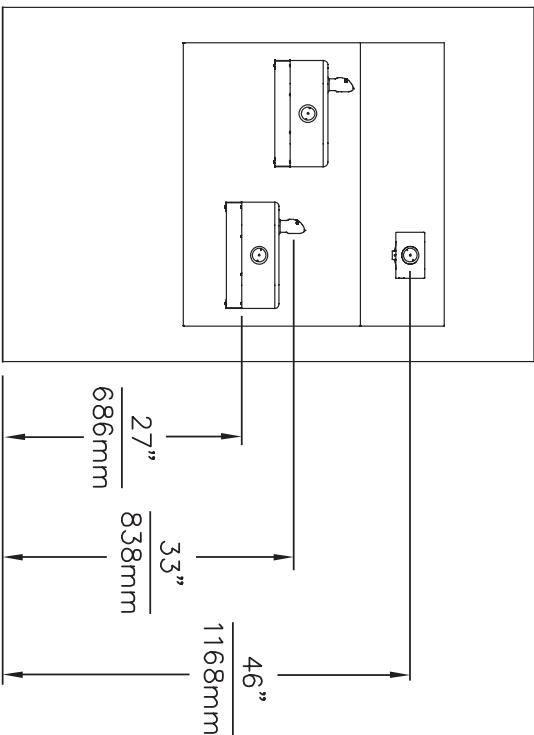
**STEP 3**  
INSTALL THE BOTTLE FILLER PER THE INSTRUCTIONS SUPPLIED WITH THE UNIT

NOTES:  
1. WHEN INSTALLING THIS UNIT, LOCAL, STATE OR FEDERAL CODES SHOULD BE ADHERED TO.



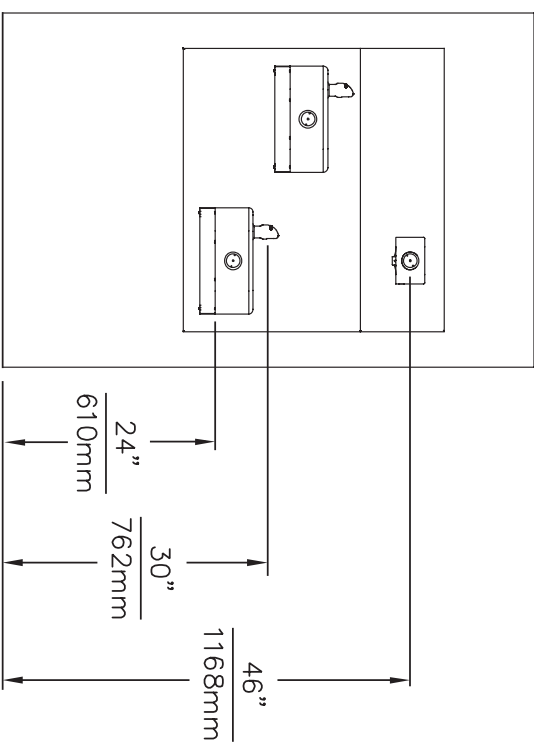
**INSTALLATION OVER DOUBLE FOUNTAIN**  
SHOWN FROM REAR

		<b>Haws</b>		1455 KLEPPE LANE SPARKS, NEVADA, 89431 (775) 359-4772 FAX (775) 369-7424 EMAIL: HAWS@HAWS.CO.COM WEBSITE: WWW.HAWS.CO.COM	
ECNO. REVISION	DATE	CHKD.	DATE	MODEL(S)	DRAWING TYPE
5081	02/27/17	FV	02/27/17	DRAWING, BACK PANEL SPACER INST. BF	INSTALLATION
APPROVED:	DATE	SCALE	1:1	DRAWING TYPE	SIZE
FV	02/27/17	SCALE	1:1	DRAWING TYPE	SHEET 2 OF 2
PART NUMBER			REVISION		
051000493.D			2		



**ADA ADULT ACCESSIBLE DIMENSIONS 1117L AND H117.8**

H117.8 GRILL NOT SHOWN FOR CLARITY



**ADA CHILD ACCESSIBLE DIMENSIONS 1117L AND H117.8**

H117.8 GRILL NOT SHOWN FOR CLARITY

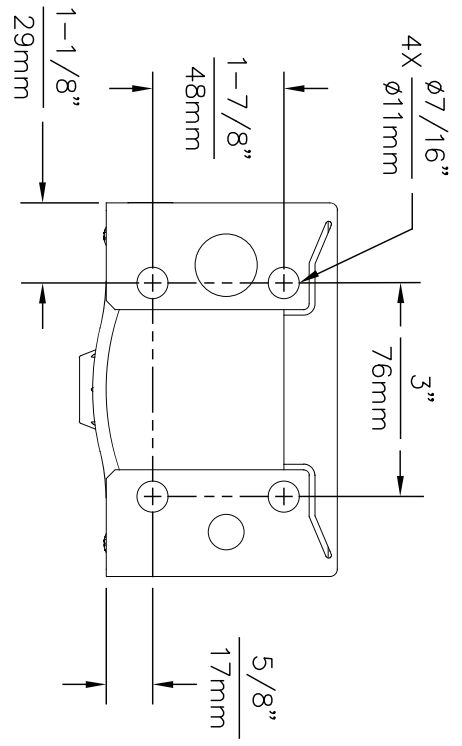
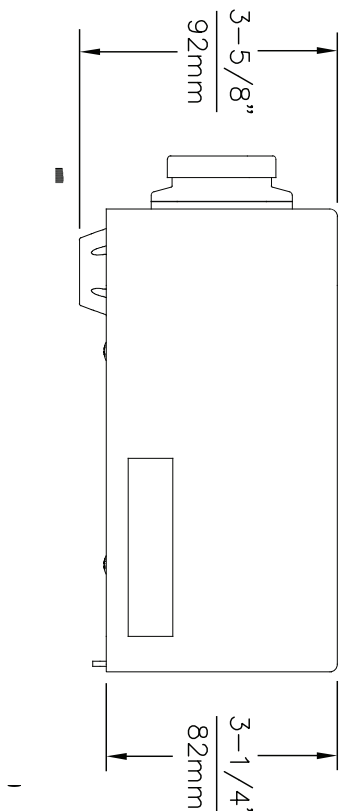


**Haws**

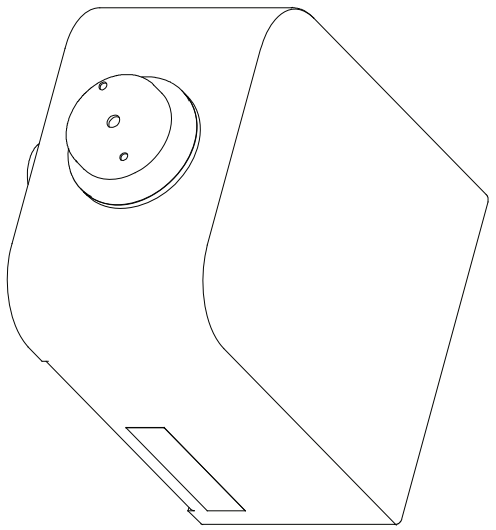
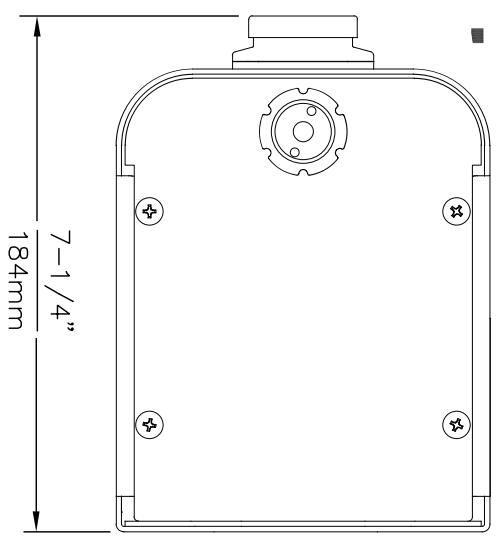
1455 KLEPPE LANE  
 SPARKS, NEVADA 89431  
 (775) 359-4712 FAX (775) 359-7424  
 E-MAIL: HAWS@HAWS.CO.COM  
 WEBSITE: WWW.HAWS.CO.COM

EQ# NO.	REVISED PER BY:	MODEL(S)	PART NUMBER
DRWING NO.	DATE	WITH MODEL 1920 BOTTLE FILLER	1117L-24
APPROVED:	DATE	SCALE: NA	REVISION
		DRAWING TYPE	0A.1
		INSTALLATION	SIZE: A
			SHEET 1 OF 1

THIS DOCUMENT IS TRUE AND CORRECT AT TIME OF PUBLICATION. CONTINUED PRODUCT IMPROVEMENTS MAKE SPECIFICATIONS AND MEASUREMENTS SUBJECT TO CHANGE WITHOUT NOTICE.



1920 MOUNTING HOLE LOCATIONS



NOTES:

1. SEE SEPERATE INSTALLATION DRAWINGS FOR MOUNTING PLATES AND BACKPANELS
2. WHEN INSTALLING THIS UNIT, LOCAL, STATE OR FEDERAL CODES SHOULD BE ADHERED TO FOR INSTALLATION LOCATIONS, WASTE & SUPPLY REQUIREMENTS OTHER THAN SHOWN.

		<b>Haws</b>		1455 KLEPPE LANE	
SPARKS, NEVADA 89431		(775) 359-4712 FAX (775) 359-7424		E-MAIL: HAWS@HAWS.CO.COM	
WEBSITE: WWW.HAWS.CO.COM		ECN NO. REUSED PER BY:		MODEL(S)	
5061	EQN. 5172	MA	DATE: CRKD	MODEL 1920/1920HPS/1920W	
DRAWN	EQN. 5172	MA	DATE: CRKD	PART NUMBER	
0510000490.D	0510000490.D	0510000490.D	0510000490.D	0510000490.D	
APPROVED	DATE	SCALE	NA	DRAWING TYPE:	INSTALLATION
02/27/17					
		SIZE: A	SHEET 1	OF 5	2

©2017 Haws Corporation - All Rights Reserved. HAWS® and other trademarks used in these materials are the exclusive property of Haws Corporation.