



Haws[®]

model 1011HPSMS-1920HPS
ADA Dual Hi-Polished Wall-Mount Fountain and Bottle Filler

FEATURES & BENEFITS

CONSTRUCTION

Rugged ADA accessible 18 gauge Type 304 Stainless Steel swirl design bowls, 14 gauge Type 304 Stainless Steel brackets and bottle filler, and vandal-resistant bottom plates provides a long lasting unit with added peace of mind.

BOTTLE FILLER

Vandal-resistant, 14-gauge Type 304 stainless steel bottle filler housing with push button operation and 1 gpm (3.78 L) laminar flow.

PUSH BUTTON VALVES

The push-button activated valves have all stainless steel bodies, with chrome plated brass push button assemblies which allow for front access to water stream adjustment, water control cartridge, and water supply strainer replacement without having to go through the bottom plate. Operating pressure range of 30 to 90 psi (2.1 to 6.2 bar).

BUBBLER HEADS

Polished chrome-plated brass bubbler heads with integral laminar flow prevents splashing while providing a superior flow pattern. The integral 1 1/16" basin shank and stainless anti-rotational roll pin add vandal resistance strength. Shielded, angled stream opening provides a steady, sanitary source of drinking water at .45 gpm.

MOUNTING

Galvanized frame and 10 gauge surface plate provide the maximum mounting strength, and allows front access of P-trap and stop.

BACK PANEL

Stainless steel back panel helps to protect the wall from inadvertent splashing, and its decorative satin finish increases location visibility and completes the fountains attractive appearance.

QUALITY CONTROL

Both fountains and bottle filler are pre-built and fully water and pressure tested to ensure proper functionality.

OPTIONS

Mounting Plate: Model 6700, in-wall mounting plate for model 1920.

Mounting Plate: Model 6700R, on-wall mounting plate for model 1920 over low side of dual drinking fountains.

Fountain Skirt: Model SK3HPS, polished stainless steel cane touch skirt for installation on high unit in some applications that may need to comply with ADA protruding objects guidelines.

Water Filter: Model 6426, 10" x 2" (25.4 x 5.1 cm), in-line lead removal element reduces lead from incoming water supply.

REQUIRED MODELS

1011HPSMS / MTGFR.DF2 / 1920HPS / BP32HPS

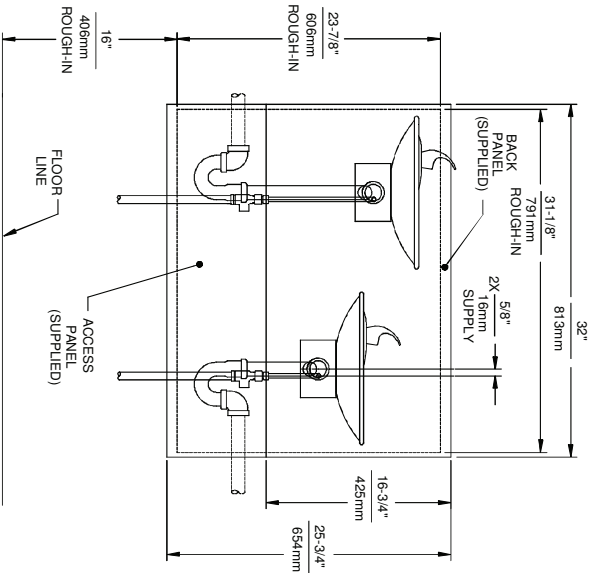
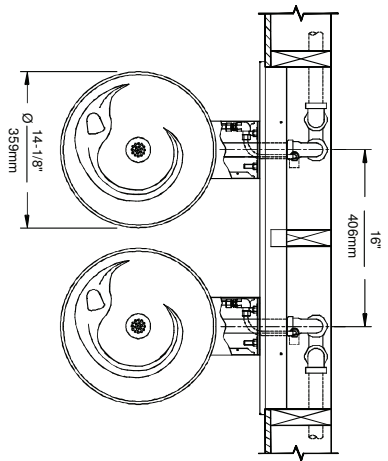
Order these items to make up the Model 1011HPSMS-1920HPS fountain with stainless steel back panel, bottle filler with stainless steel back plate, and fountain mounting frame shown above.

SPECIFICATIONS

Model 1011HPSMS-1920HPS Hi-Lo ADA wall-mounted drinking fountain and bottle filler shall include dual 18-gauge Type 304 polished Stainless Steel basins with integral swirl design, 14 gauge Type 304 polished Stainless Steel wall brackets and bottle filler bracket, in-wall mounting frame with lower access panel allowing for front access of P-trap and stop, 100% lead-free waterways, push-button operated stainless steel valves with front-accessible cartridge and flow adjustment, polished chrome-plated brass vandal resistant bubbler heads with integral laminar anti-squirt flow, 1 gpm (3.78L) laminar flow bottle filler, chrome-plated brass vandal-resistant waste strainers, high and low fountain mounting levels, stainless steel satin finish back panels, and 1-1/4" O.D. (3.2 cm) waste pipes. CSA certified and ADA accessible, ANSI/NSF 61, Section 9, lead free.



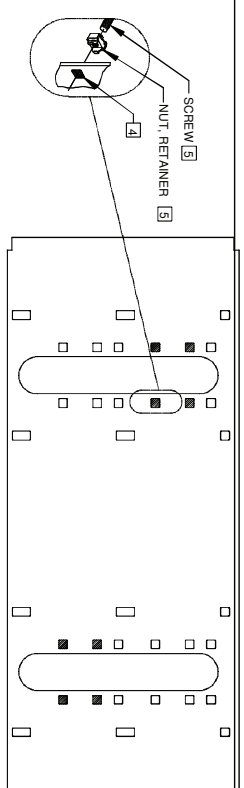
THIS DOCUMENT IS TRUE AND CORRECT AT TIME OF PUBLICATION. CONTINUED PRODUCT IMPROVEMENTS MAKE SPECIFICATIONS AND MEASUREMENTS SUBJECT TO CHANGE WITHOUT NOTICE.



NOTES:

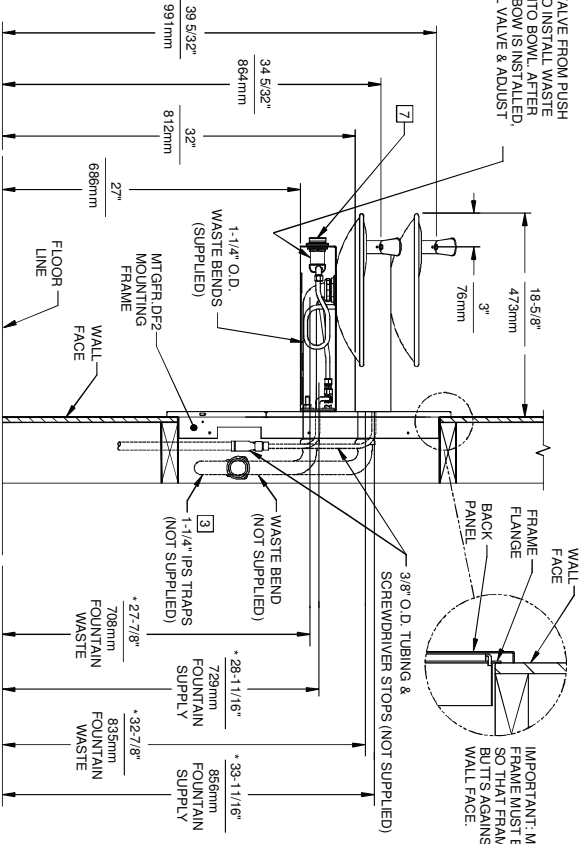
- 1 HOLD ROUGH-IN DIMENSIONS ±1/8" (3.2mm).
- 2 WHEN INSTALLING THIS UNIT, LOCAL, STATE, OR FEDERAL CODES SHOULD BE ADHERED TO FOR DIMENSIONS (LOCATIONS), WASTE AND SUPPLY REQUIREMENTS OTHER THAN SHOWN.
- 3 INSTALLER MUST PROVIDE TRAP FOR PROPER INSTALLATION.

BOWL MOUNTING PATTERN DETAIL



- 4 HOLE COMBINATION SHOWN BELOW IS FOR USE WITH LOW FOUNTAIN ON THE RIGHT AND HIGH FOUNTAIN ON THE LEFT. USE OPPOSITE HOLES FOR HIGH ON RIGHT AND LOW ON LEFT.
- 5 TO CHANGE FOUNTAIN MFG. SCREW LOCATIONS: FIRST REMOVE SCREWS AND THEN SQUEEZE CLIPS ON NUT RETAINER TO POP OUT. SNAP INTO NEW POSITIONS FROM BACKSIDE AND RE-ASSEMBLE SCREWS.
- 6 IMPORTANT: A L.H. LOW (OPTIONAL) CONFIGURATION WILL REQUIRE A DIFFERENT BACK PANEL AND THE WASTE AND SUPPLY DIMENSIONS SHOWN (*) MUST BE REVERSED.
- 7 REFER TO 8874SS OPERATION AND MAINTENANCE MANUAL FOR PUSH BUTTON AND VALVE INSTALLATION MAINTENANCE INSTRUCTIONS.

REMOVE VALVE FROM PUSH BUTTON TO INSTALL WASTE ELBOW ON TO BOWL. AFTER WASTE ELBOW IS INSTALLED, REINSTALL VALVE & ADJUST FLOW



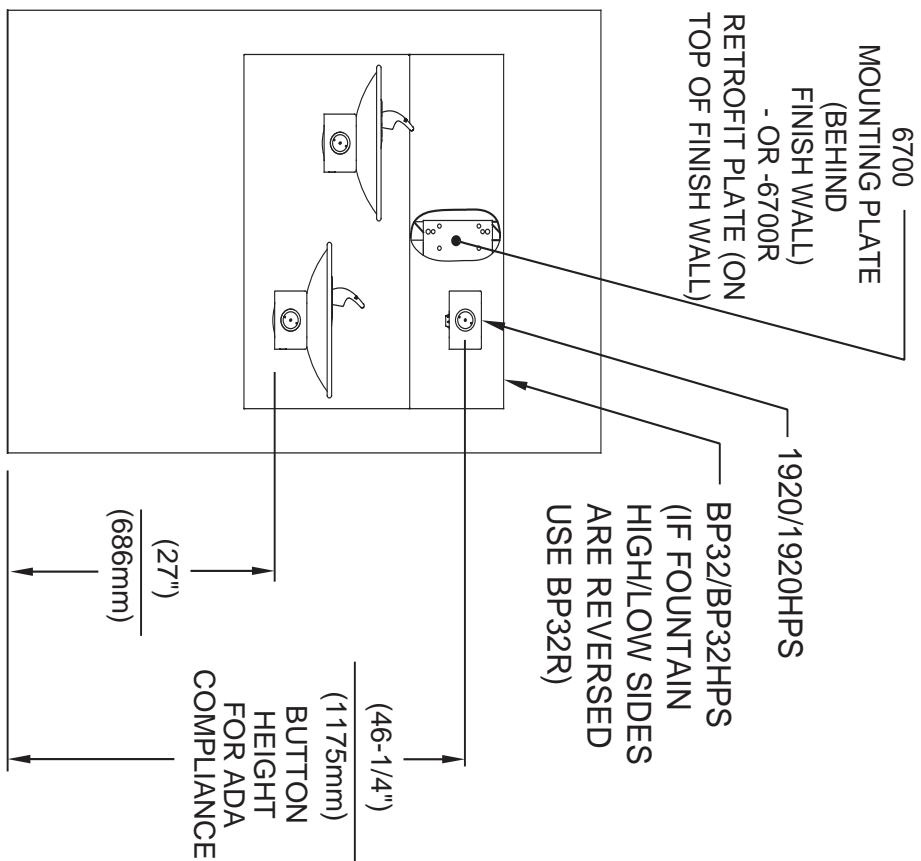
WALL FACE
FRAME FLANGE
BACK PANEL
WASTE BEND (NOT SUPPLIED)
WASTE BEND (NOT SUPPLIED)
1-1/4 IPS TRAPS (NOT SUPPLIED)
MITTER, DP2 MOUNTING FRAME
FLOOR LINE
WALL FACE
WASTE FOUNTAIN
WASTE FOUNTAIN

1455 KIL EPPLE LANE
SPARKS, NEVADA 89831
(775) 359-4712 FAX (775) 359-7424
E-MAIL: HAWES@HAWSCO.COM
WEBSITE: WWW.HAWSCO.COM

1011HPSMS/1011MS
DRINKING FOUNTAIN

ENGINEER/DESIGNER/REVISE	MODEL(S)
DRAWN: ENH/SL/LS	
DATE: 08/02/99	
APPROVED: P.M.	
DATE: 10/24/16	
SCALE: 1:16	
DRAWING TYPE: INSTALLATION	
SHEET: 1 OF 1	

©2016 Haws Corporation - All Rights Reserved. HAWES® and other trademarks used in these materials are the exclusive property of Haws Corporation.



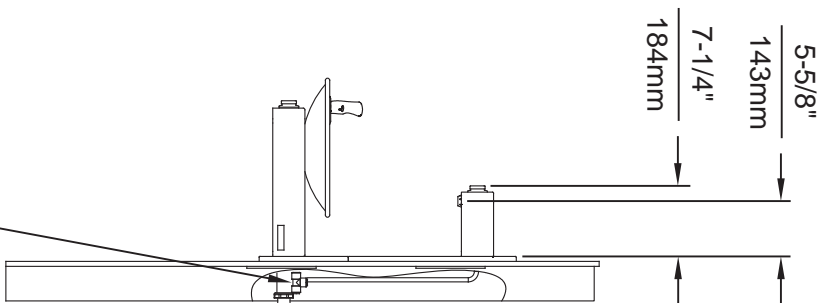
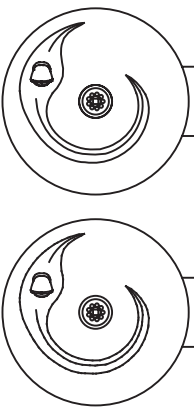
INSTALLATION ABOVE HAWS 1011, 1011HPS, 1011HPSMS, 1011MS, H1011.8, H1011.8HO, H1011.8HPS

* IF YOUR FOUNTAIN IS THIS STYLE USE THESE DIMENSIONS



1. SEE SEPARATE INSTALLATION DRAWINGS FOR MOUNTING PLATES AND BACKPANELS

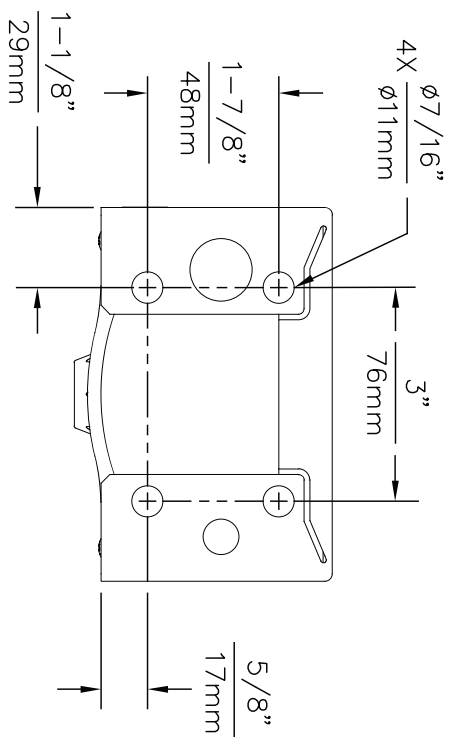
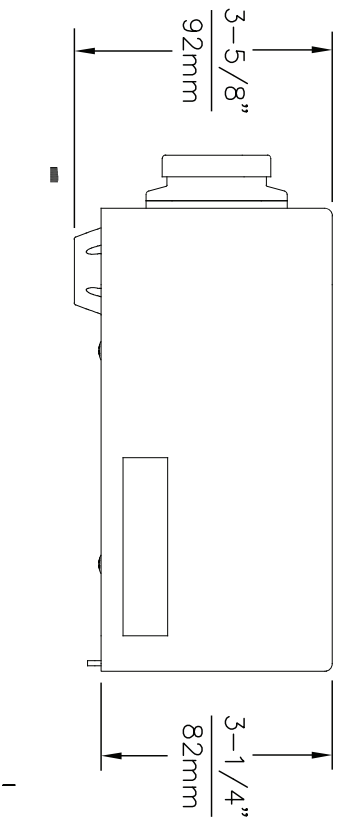
2. WHEN INSTALLING THIS UNIT, LOCAL, STATE OR FEDERAL CODES SHOULD BE ADHERED TO FOR INSTALLATION LOCATIONS, WASTE & SUPPLY REQUIREMENTS OTHER THAN SHOWN.



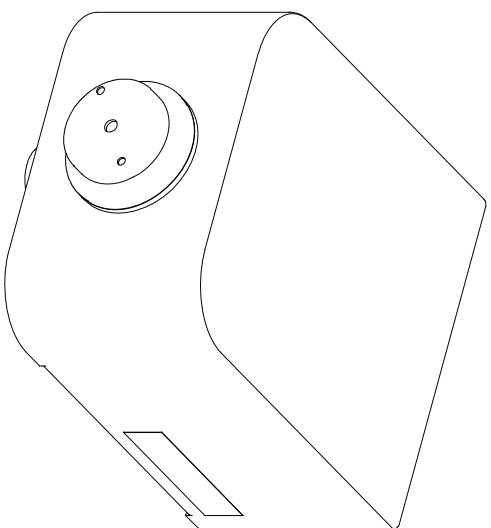
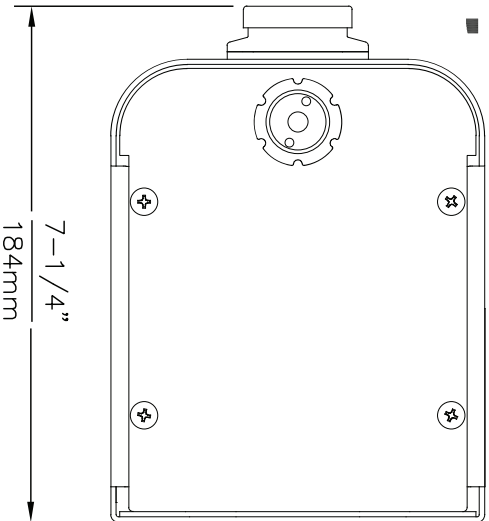
3/8" O.D. SUPPLY TUBING AND 3/8" O.D. PUSH-IN TEE SUPPLIED. (CONNECT TO FOUNTAIN SUPPLY LINE)

		Haws	
1455 KLEPPE LANE SPARKS, NEVADA 89431 (775) 359-4712 FAX (775) 359-7424 E-MAIL: HAWS@HAWS.CO.COM WEBSITE: WWW.HAWS.CO.COM			
EQU NO. REVISED PER BY:	MODEL(S)	1920/1920HPS	
5031			
DATE: 06/14/20	SCALE: N/A	DRAWING TYPE: INSTALLATION	SHEET 2 OF 6
APPROVED: F.V.	DATE: 06/14/20	SCALE: N/A	DRAWING TYPE: INSTALLATION
PART NUMBER	0510000490.D	REVISION	6

THIS DOCUMENT IS TRUE AND CORRECT AT TIME OF PUBLICATION. CONTINUED PRODUCT IMPROVEMENTS MAKE SPECIFICATIONS AND MEASUREMENTS SUBJECT TO CHANGE WITHOUT NOTICE.



1920 MOUNTING HOLE LOCATIONS

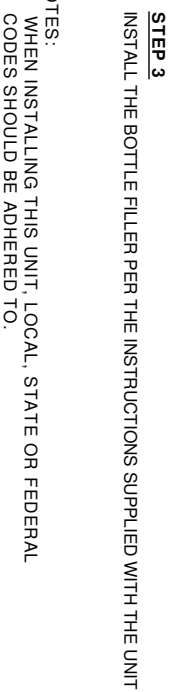
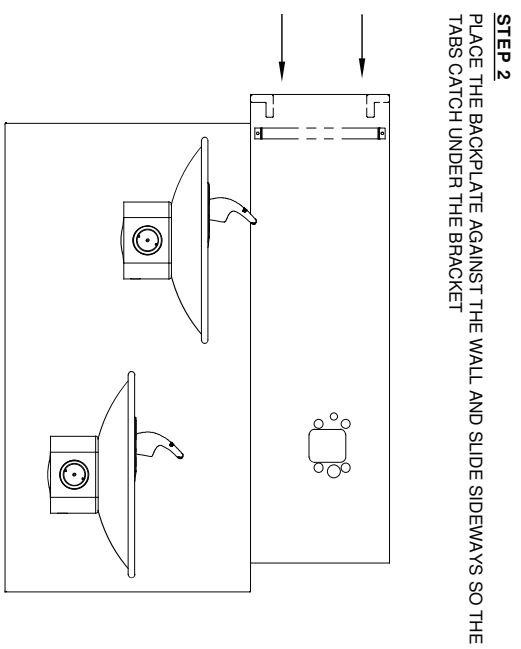
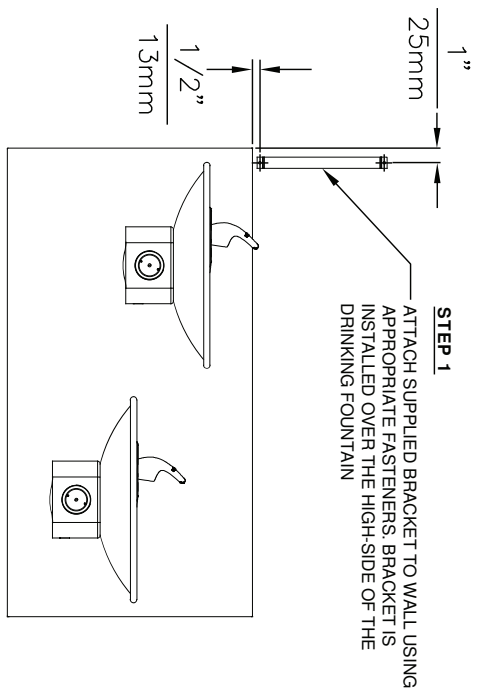


NOTES:

1. SEE SEPERATE INSTALLATION DRAWINGS FOR MOUNTING PLATES AND BACKPANELS
2. WHEN INSTALLING THIS UNIT, LOCAL, STATE OR FEDERAL CODES SHOULD BE ADHERED TO FOR INSTALLATION LOCATIONS, WASTE & SUPPLY REQUIREMENTS OTHER THAN SHOWN.

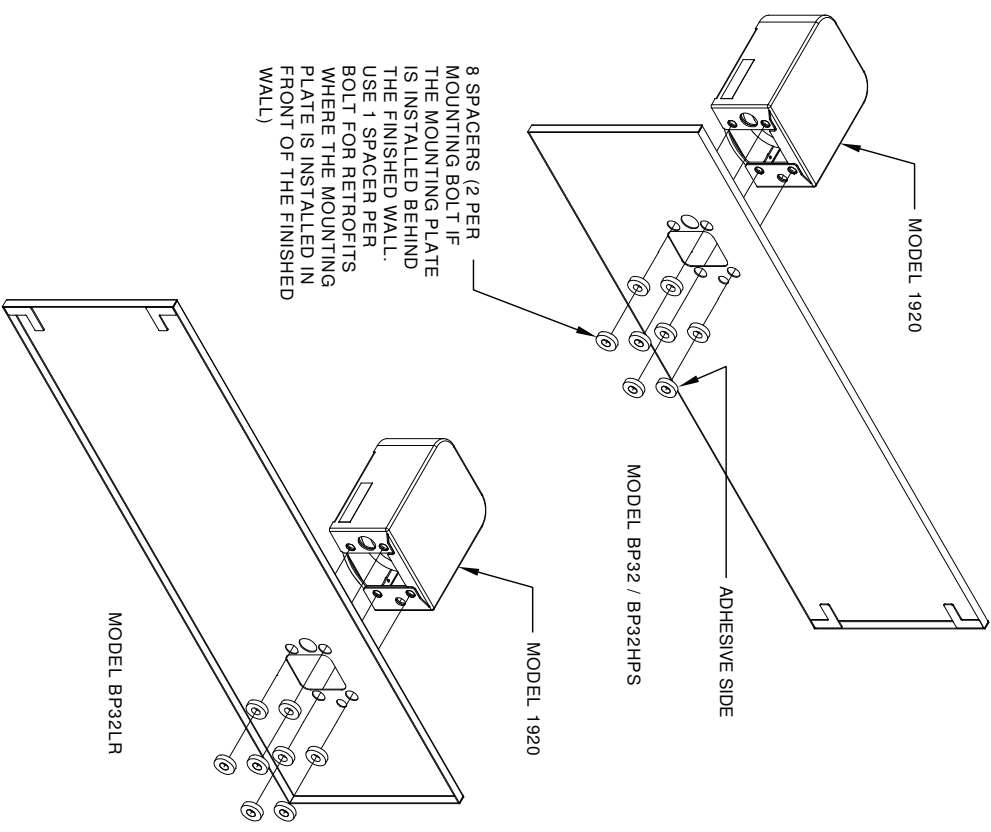
		1455 KLEPPE LANE SPARKS, NEVADA 89431 (775) 359-4712 FAX (775) 359-7424 E-MAIL: HAWS@HAWSCO.COM WEBSITE: WWW.HAWSCO.COM	
EGNNO	REVISION	MODEL(S)	PART NUMBER
9281	0510000490.D	MODEL 1920/1920HPS/1920W	0510000490.D
DRAWN	DATE	SCALE	SIZE
DS	06/25/16	NA	A
APPROV	DATE	DRAWING TYPE	SHEET
EV	06/27/17	INSTALLATION	1 OF 5

©2017 Haws Corporation - All Rights Reserved. HAWS® and other trademarks used in these materials are the exclusive property of Haws Corporation.



NOTES:
1. WHEN INSTALLING THIS UNIT, LOCAL, STATE OR FEDERAL CODES SHOULD BE ADHERED TO.

©2017 Haws Corporation - All Rights Reserved. HAWS® and other trademarks used in these materials are the exclusive property of Haws Corporation.



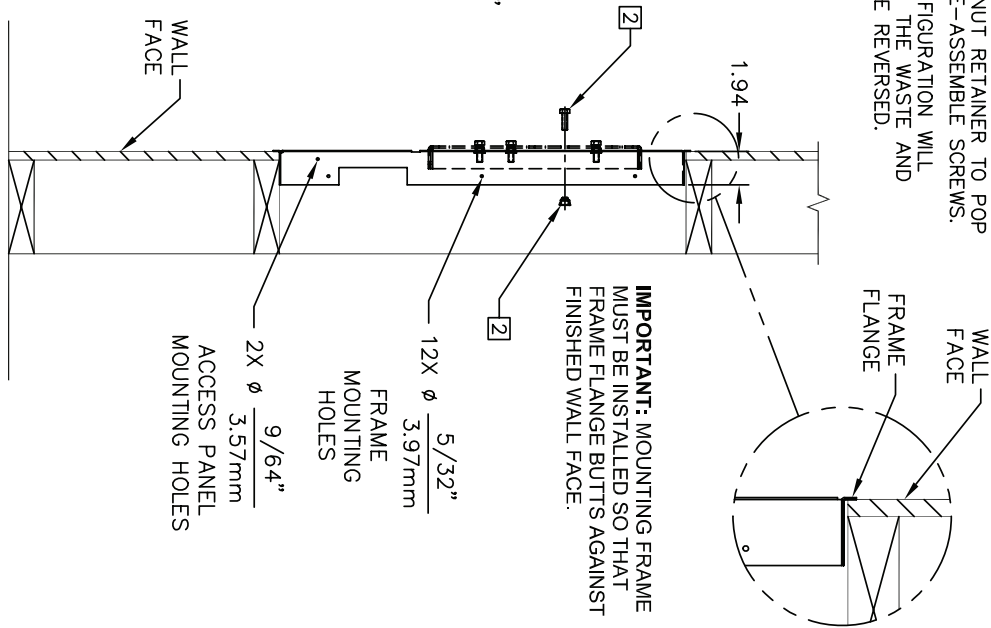
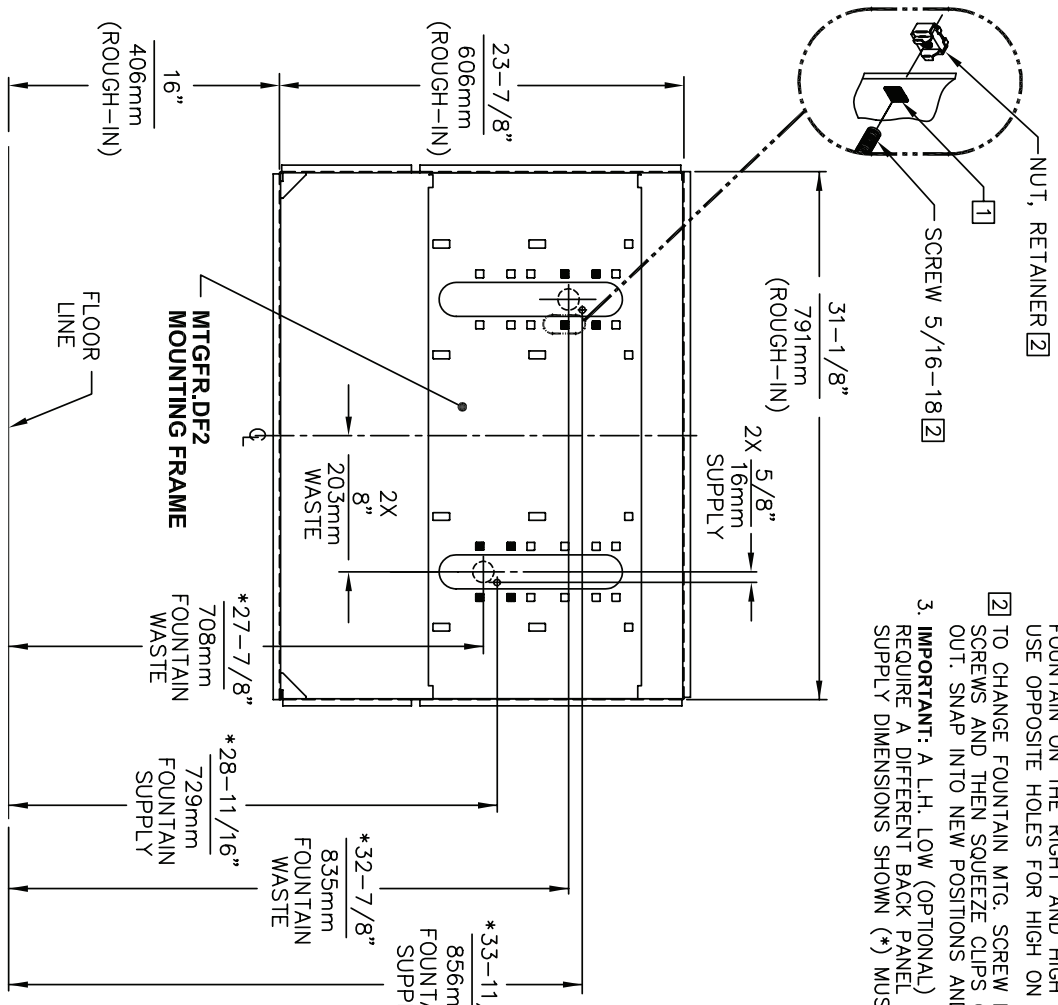
INSTALLATION OVER DOUBLE FOUNTAIN
SHOWN FROM REAR

		1455 KLEPPÉLANE	
SPARKS, NEVADA 89431		(775) 359-4712 FAX (775) 359-7424	
E-MAIL: HAWS@HAWSCO.COM		WEBSITE: WWW.HAWSCO.COM	
ECN NO: 5081	REVISION: 0510000493.D	DATE: 06/27/17	SCALE: 1:1
DRAWN: MJ	CHKD: EV	DATE: 06/27/17	SIZE: A
APPROVED: TV	DATE: 06/27/17	SCALE: 1:1	SHEET 2 OF 2
MODEL(S) DRAWING: BACK PANEL SPACER INST. BF		INSTALLATION	

THIS DOCUMENT IS TRUE AND CORRECT AT TIME OF PUBLICATION, CONTINUED PRODUCT IMPROVEMENTS MAKE SPECIFICATIONS AND MEASUREMENTS SUBJECT TO CHANGE WITHOUT NOTICE.

NOTES:

- 1 HOLE COMBINATION SHOWN BELOW IS FOR USE WITH LOW FOUNTAIN ON THE RIGHT AND HIGH FOUNTAIN ON THE LEFT. USE OPPOSITE HOLES FOR HIGH ON RIGHT AND LOW ON LEFT.
- 2 TO CHANGE FOUNTAIN MTG. SCREW LOCATIONS: FIRST REMOVE SCREWS AND THEN SQUEEZE CLIPS ON NUT RETAINER TO POP OUT. SNAP INTO NEW POSITIONS AND RE-ASSEMBLE SCREWS.
- 3 IMPORTANT: A L.H. LOW (OPTIONAL) CONFIGURATION WILL REQUIRE A DIFFERENT BACK PANEL AND THE WASTE AND SUPPLY DIMENSIONS SHOWN (*) MUST BE REVERSED.



4. HOLD ROUGH-IN DIMENSIONS ± 1/8" (3.2mm).
 5. WHEN INSTALLING THIS UNIT, LOCAL, STATE OR FEDERAL CODES SHOULD BE ADHERED TO. FOR INSTALLATION HEIGHTS OTHER THAN SHOWN, DIMENSIONS MARKED (*) MUST BE ADJUSTED ACCORDINGLY.

FOR USE WITH MODELS:
1011MS & 1011HPSMS

Haws Corporation
 INFO FAX : 1-888-FAX-HAWS (1-888-329-4297)
 1455 Kleppe Ln, Sparks NY, 89431
 Phone: 775-359-4712 Fax: 775-359-7424
 Haws AG Boobweg 3 CH-3401 Burgdorf Switzerland
 Haws Mfg Pte Ltd 74 Sungei Kadut Loop Singapore 729331
 e-mail: Haws@hawsco.com Website: www.hawsco.com

DRW NO.	REVISED BY	DATE	MODEL(S)	MTGFR.DF2
FORM	ENGR	DATE	INFO FAX DOC #	26843732
SCALE	TITLE	DATE	FORMING TYPE	INSTALLATION/ASSEMBLY
DATE	SCALE	DATE	DATE	DATE
1	A	1	1	1

DRW NO. 027080297
 FORMING NUMBER 13161C00
 REV 6

©2006 Haws Corporation - All Rights Reserved HAWS® and other trademarks used in these materials are the exclusive property of Haws Corporation.