



Haws®

model 1001HPS-1920HPS

ADA Wall-Mount Fountain and Bottle Filler

FEATURES & BENEFITS

CONSTRUCTION

Rugged ADA accessible 18 gauge Type 304 Stainless Steel swirl design bowl, 14 gauge Type 304 Stainless Steel bracket and bottle filler, and vandal-resistant bottom plates provides a long lasting unit with added peace of mind.

BOTTLE FILLER

Vandal-resistant, 14-gauge Type 304 stainless steel bottle filler housing with push button operation and 1 gpm (3.78 L) laminar flow.

PUSH BUTTON VALVES

The push-button activated valves have all stainless steel bodies, with chrome plated brass push button assemblies which allow for front access to water stream adjustment, water control cartridge, and water supply strainer replacement without having to go through the bottom plate. Operating pressure range of 30 to 90 psi (2.1 to 6.2 bar).

BUBBLER HEAD

Polished chrome-plated brass bubbler head with integral laminar flow prevents splashing while providing a superior flow pattern. The integral 1 1/16" dia. basin shank and stainless anti-rotation roll pin for vandal resistance strength. Shielded, angled stream opening provides a steady, sanitary source of drinking water at .45 gpm.

MOUNTING

3/16" (.47 cm) steel mounting plate with supplied mounting hardware for a solid unit base allows for easy installation to a framed wall. (P-trap and stop require rear access).

QUALITY CONTROL

Both fountain and bottle filler are pre-built and fully water and pressure tested to ensure proper functionality.



REQUIRED MODELS

**1001HPS / BP6HPS / 6700 /
1920HPS / BP15HPS**

Order these items to make up the Model 1001HPS-1920HPS fountain with stainless steel back panel, bottle filler with stainless steel back plate, and fountain mounting plate shown above.

OPTIONS

Mounting Plate: Model 6700, in-wall mounting plate for model 1920HPS.

Mounting Plate: Model 6700R, on-wall mounting plate for model 1920HPS.

Water Filter: Model 6426, 10" x 2" (25.4 x 5.1 cm), in-line lead removal element that reduces lead from incoming water supply.

Remote Drinking Fountain Water Chiller: Model HCR8, 8 gph (30.3 L) remote water chiller provides instantaneous cooling to meet a continuous demand for chilled water.

SPECIFICATIONS

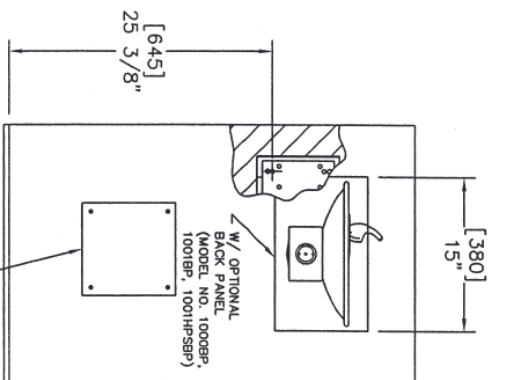
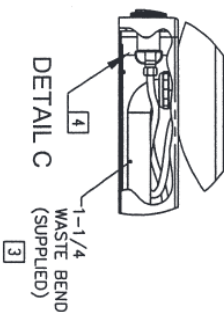
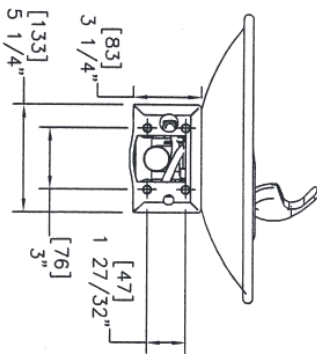
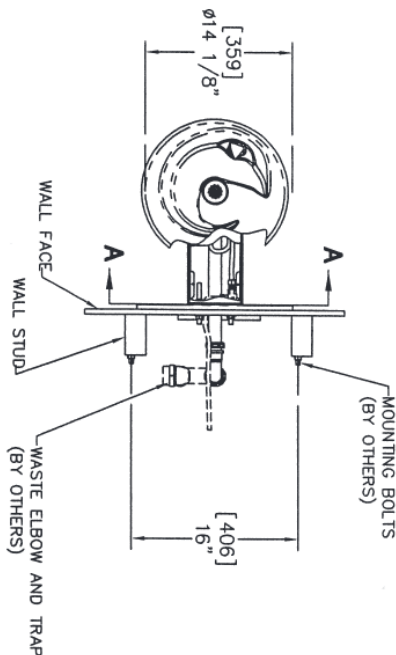
Model 1001HPS-1920HPS wall mounted ADA drinking fountain and bottle filler shall include an 18 gauge Type 304 polished Stainless Steel basin with integral swirl design, 14 gauge Type 304 polished Stainless steel wall bracket and bottle filler bracket, 100% lead-free waterways, push-button operated stainless steel valves with front-accessible cartridge and flow adjustment, polished chrome-plated brass vandal-resistant bubbler head with integral laminar anti-squirt flow, 1 gpm (3.78 L) laminar flow bottle filler, chrome plated brass vandal-resistant waste strainer, vandal-resistant bottom plates, and 1-1/4" (3.2 cm) O.D. waste pipe. (P-trap and stop require rear access). CSA certified and ADA accessible, ANSI/NSF 61, Section 9, lead free.



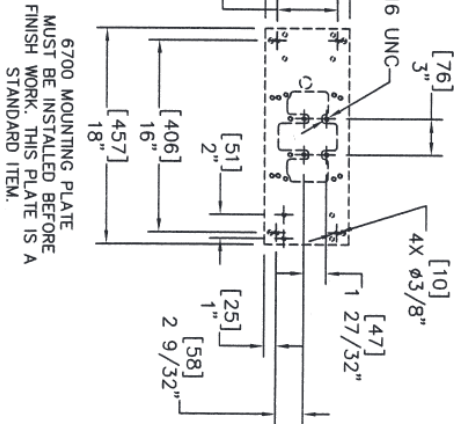
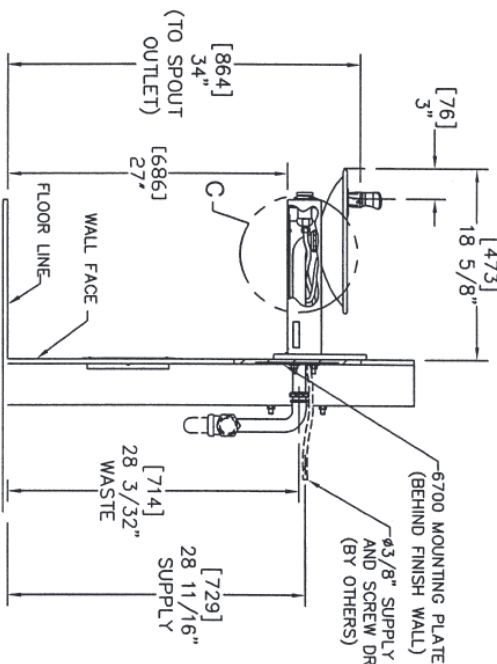
THIS DOCUMENT IS TRUE AND CORRECT AT TIME OF PUBLICATION. CONTINUED PRODUCT IMPROVEMENTS MAKE SPECIFICATIONS AND MEASUREMENTS SUBJECT TO CHANGE WITHOUT NOTICE.

NOTES:

- 1 HOLD ROUGH-IN DIMENSIONS 1/8" (3.2mm).
- 2 WHEN INSTALLING THIS UNIT, LOCAL, STATE, OR FEDERAL CODES SHOULD BE ADHERED TO FOR INSTALLATION DIMENSIONS (LOCATIONS), WASTE AND SUPPLY REQUIREMENTS OTHER THAN SHOWN.
- 3 INSTALLER MUST PROVIDE TRAP FOR PROPER INSTALLATION.
- 4 REMOVE VALVE FROM PUSH BUTTON TO INSTALL WASTE ELBOW ONTO BOWL. AFTER WASTE ELBOW IS INSTALLED, REINSTALL VALVE AND ADJUST FLOW.



OPTIONAL TRAP ACCESS PANEL
MODELS 6601MGF,
6603 AND 6603HPS



Haus Corporation
 INFO FAX : 1-888-FAX-HAUS (1-888-329-4297)
 1455 Kleppe Ln, Sparks NY, 89431
 Phone: 775-359-4712 Fax: 775-359-7424
 Haus Ag Bodweg 3 CH-3401 Burgdorf Switzerland
 Haus Mfg Pte Ltd 74 Sungai Kidul Loop Singapore 729531
 e-mail: Haus@hausco.com Website: www.hausco.com

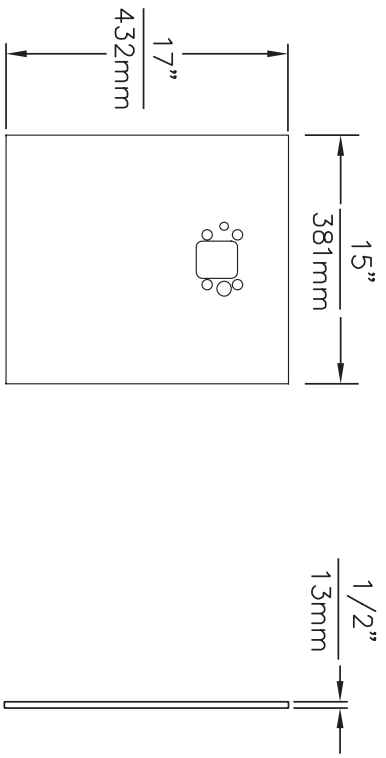
MODEL(S):
 MODEL 1000/1001/1001HPS
 DRAWING TYPE: INSTALLATION/2393K

DATE: 5/97
 SCALE: 1/8" = 1"

0002076304.D
 0002076304.D
 9

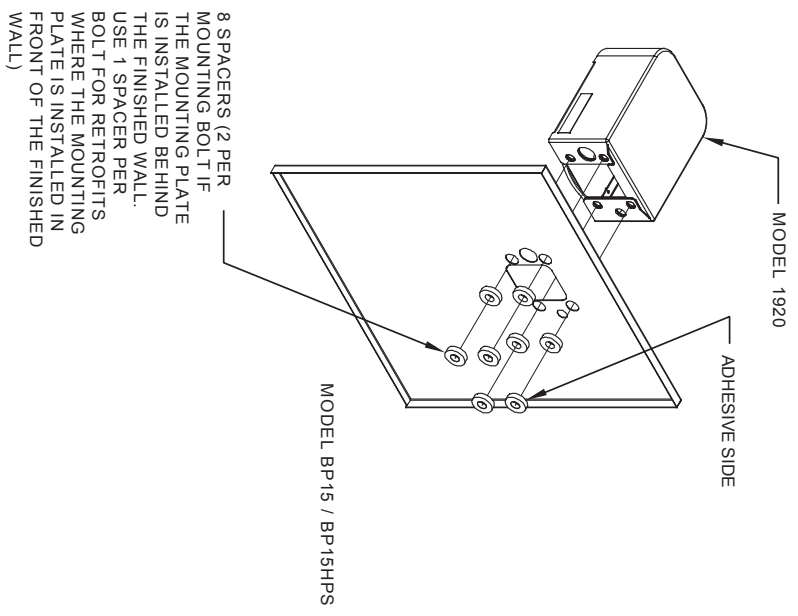
0002076304.D

THIS DOCUMENT IS TRUE AND CORRECT AT TIME OF PUBLICATION. CONTINUED PRODUCT IMPROVEMENTS MAKE SPECIFICATIONS AND MEASUREMENTS SUBJECT TO CHANGE WITHOUT NOTICE.



MODEL BP15 / BP15HPS

- NOTES:
 1. WHEN INSTALLING THIS UNIT, LOCAL, STATE OR FEDERAL CODES SHOULD BE ADHERED TO.



INSTALLATION OVER SINGLE FOUNTAIN
 SHOWN FROM REAR



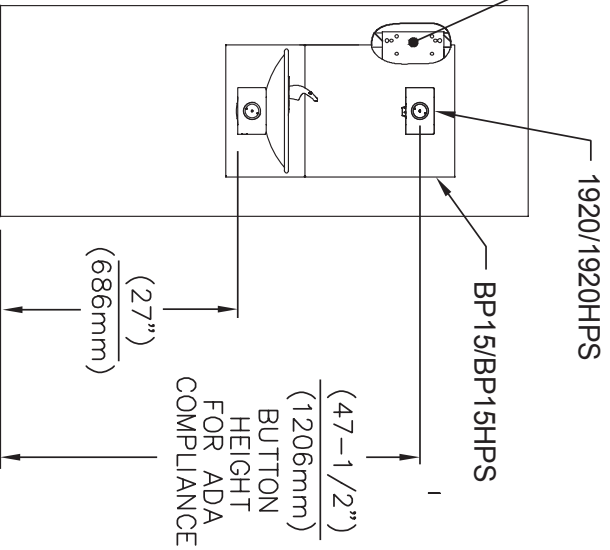
Haws

1455 KLEPPPE LANE
 SPARKS, NEVADA 89431
 (775) 359-4712 FAX (775) 359-7424
 E-MAIL: HAWS@HAWS.CO.COM
 WEBSITE: WWW.HAWS.CO.COM

ECON NO.	REVISED PER BR.	MODEL(S)	PART NUMBER
DRAWN	DATE	GC	1001-20
DESIGN	DATE	CHKD	REVISION
APPROVED	DATE	SCALE	0A.1
DRAWING TYPE:		INSTALLATION	SIZE: A1 SHEET 2 OF 2
SCALE: 1:1		MODEL(S)	MODEL 1001 AND 1001HPS WITH MODEL 1920 BOTTLE FILLER

©2017 Haws Corporation - All Rights Reserved. HAWS® and other trademarks used in these materials are the exclusive property of Haws Corporation.

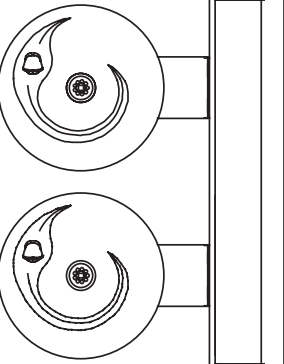
6700 MOUNTING PLATE
(BEHIND FINISH WALL)
- OR -
6700R RETROFIT PLATE
(ON TOP OF FINISH WALL)



INSTALLATION ABOVE HAWS 1001, 1001HPS,

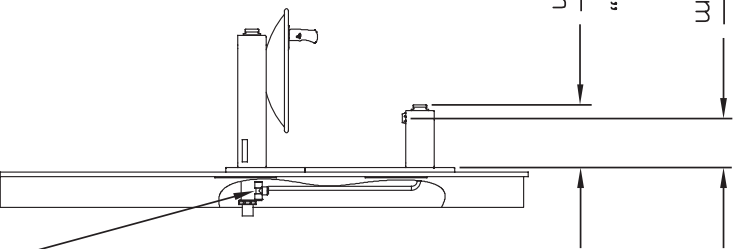
* IF YOUR FOUNTAIN IS THIS STYLE USE THESE DIMENSIONS

1. SEE SEPARATE INSTALLATION DRAWINGS FOR MOUNTING PLATES AND BACKPANELS
2. WHEN INSTALLING THIS UNIT, LOCAL, STATE OR FEDERAL CODES SHOULD BE ADHERED TO FOR INSTALLATION LOCATIONS, WASTE & SUPPLY REQUIREMENTS OTHER THAN SHOWN.



5-5/8"
143mm

7-1/4"
184mm



3/8" PUSH IN TEE
(CONNECT TO
FOUNTAIN SUPPLY)

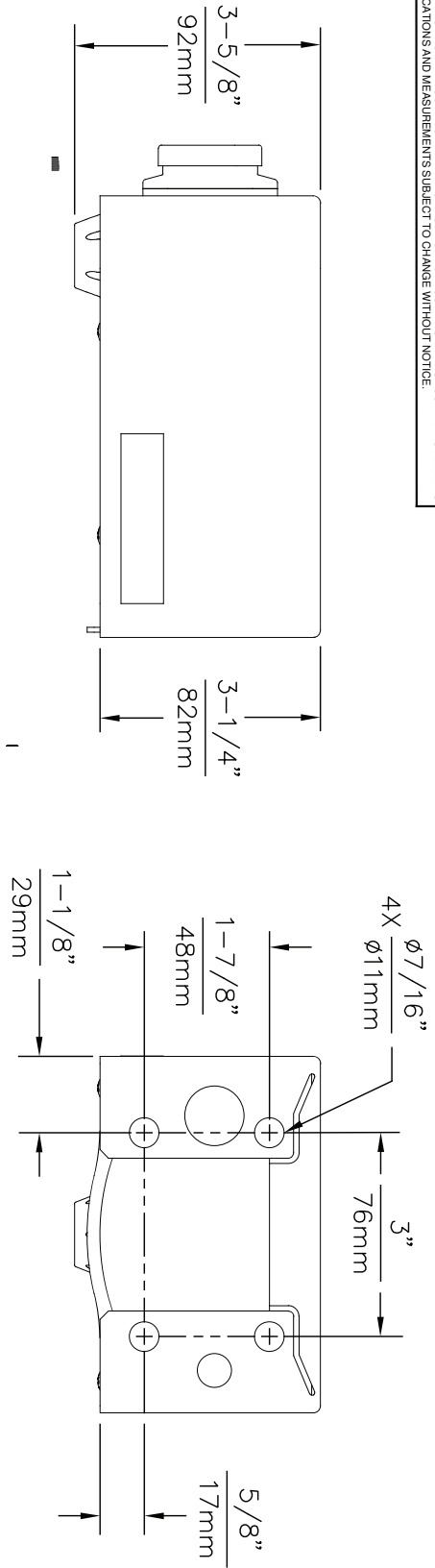


1455 KLEPPE LANE
SPARKS, NEVADA 89431
(775) 359-4712 FAX (775) 359-7424
E-MAIL: HAWS@HAWSCO.COM
WEBSITE: WWW.HAWSCO.COM

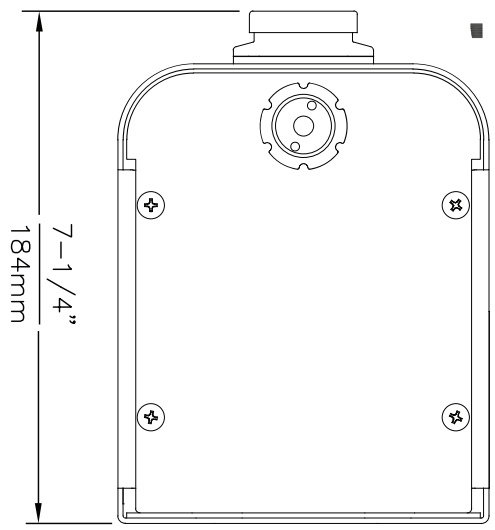
EDNNO	REVISED/PER BY:	MODEL(S)	MODEL 1001 AND 1001HPS WITH MODEL 1920 BOTTLE FILLER
DRAWN	DATE	CHK'D	
GO	1983/17		
APPROVED	DATE	SCALE	N/A
		DRAWING TYPE:	INSTALLATION
		SIZE:	A1 SHEET 1 OF 2
		PART NUMBER	1001-20
		REVISION	0A.1

© Haws Corporation - All Rights Reserved. HAWS® and other trademarks used in these materials are the exclusive property of Haws Corporation.

THIS DOCUMENT IS TRUE AND CORRECT AT TIME OF PUBLICATION. CONTINUED PRODUCT IMPROVEMENTS MAKE SPECIFICATIONS AND MEASUREMENTS SUBJECT TO CHANGE WITHOUT NOTICE.



1920 MOUNTING HOLE LOCATIONS



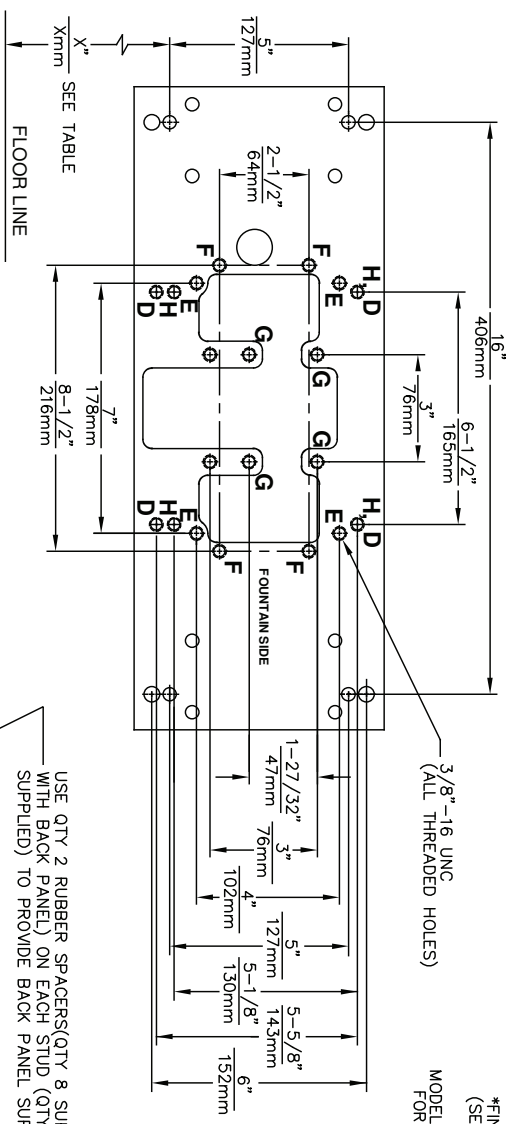
NOTES:

1. SEE SEPERATE INSTALLATION DRAWINGS FOR MOUNTING PLATES AND BACKPANELS
2. WHEN INSTALLING THIS UNIT, LOCAL, STATE OR FEDERAL CODES SHOULD BE ADHERED TO FOR INSTALLATION LOCATIONS, WASTE & SUPPLY REQUIREMENTS OTHER THAN SHOWN.

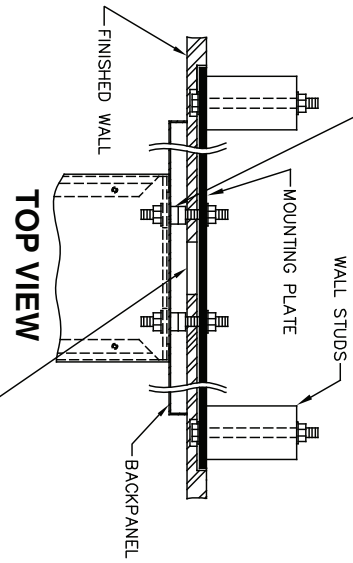
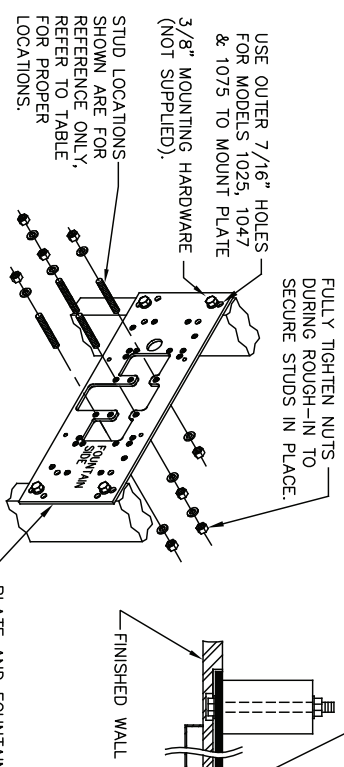
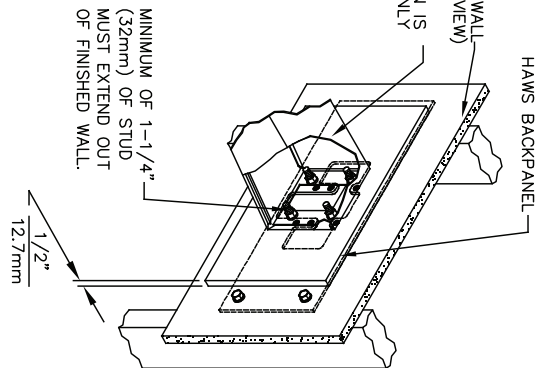
		Haws	
1455 KLEPPE LANE SPARKS, NEVADA, 89431 (775) 359-4712 FAX (775) 359-7424 E-MAIL: HAWS@HAWSCO.COM WEBSITE: WWW.HAWSCO.COM		MODEL(S) MODEL 1920/1920HPS/1920W	
EQUIP. NO. 3981	REVISIONS	DATE: 06/25/18	SCALE: N/A
DESIGNED BY: DS	DATE: 06/25/18	CHK'D BY: MJ	DRAWING TYPE: INSTALLATION
APPROVED BY: TJ	DATE: 06/27/17	SCALE: N/A	INSTALLATION
PART NUMBER 0510000490.D		REVISION: 2	
SIZE: A		SHEET: 1 OF 5	

©2017 Haws Corporation - All Rights Reserved. HAWS® and other trademarks used in these materials are the exclusive property of Haws Corporation.

THIS DOCUMENT IS TRUE AND CORRECT AT TIME OF PUBLICATION. CONTINUED PRODUCT IMPROVEMENTS MAKE SPECIFICATIONS AND MEASUREMENTS SUBJECT TO CHANGE WITHOUT NOTICE.



USE QTY 2 RUBBER SPACERS(QTY 8 SUPPLIED WITH BACK PANEL) ON EACH STUD (QTY 4 SUPPLIED) TO PROVIDE BACK PANEL SUPPORT.



MODEL	MTG HOLES	"X" DIM
1000	"G"	25-3/8" [645mm]
1001	"G"	25-3/8" [645mm]
1025	"D"	28-1/8" [714mm]
1047	"E"	27-1/2" [699mm]
1075	"E"	28" [711mm]
1105	"H"	34-5/16" [872mm]
1109	"H"	27-5/16" [694mm]
1116	"G"	25-3/8" [645mm]
1001FR	"G"	25-3/8" [645mm]
1109FR	"H"	27-5/16" [694mm]
1075FR	"E"	28" [711mm]
1311	"E"	26-3/4" [679mm]
1107L	"E"	26-3/16" [665mm]
1311TRIMCA	"E"	26-3/4" [679mm]

CAUTION

REGARDING CONCRETE/MASONRY WALL MOUNTING: DO NOT SECURE MOUNTING PLATE TO SAME SIDE OF WALL AS FOUNTAIN. AVOID COMPROMISING INTEGRITY OF WALL WHEN ANCHORING FOUNTAIN. IT IS RECOMMENDED THAT INSTALLER CALL TECHNICAL SUPPORT IF THERE ARE ANY QUESTIONS AS TO HOW TO OBTAIN A PROPER ANCHOR IN CONCRETE/MASONRY WALLS. 1-800-766-5612

1465 KLEPPPE LANE
SPARKS, NEVADA 89431
(775) 359-4712 FAX (775) 359-7424
E-MAIL: HAWS@HAWSCO.COM
WEBSITE: WWW.HAWSCO.COM

REVISED PER BY: MODEL(S)
DRAWN: LEON STYZE
CHKD: DATE: 02/27/17
SCALE: 1/5
DRAWING TYPE: INSTALLATION
SIZE: A
SHEET: 1 OF 2

6700
MOUNTING PLATE, SINGLE

PART NUMBER: 0002080016
DRAWING NO.: 05387C00
REV: 20