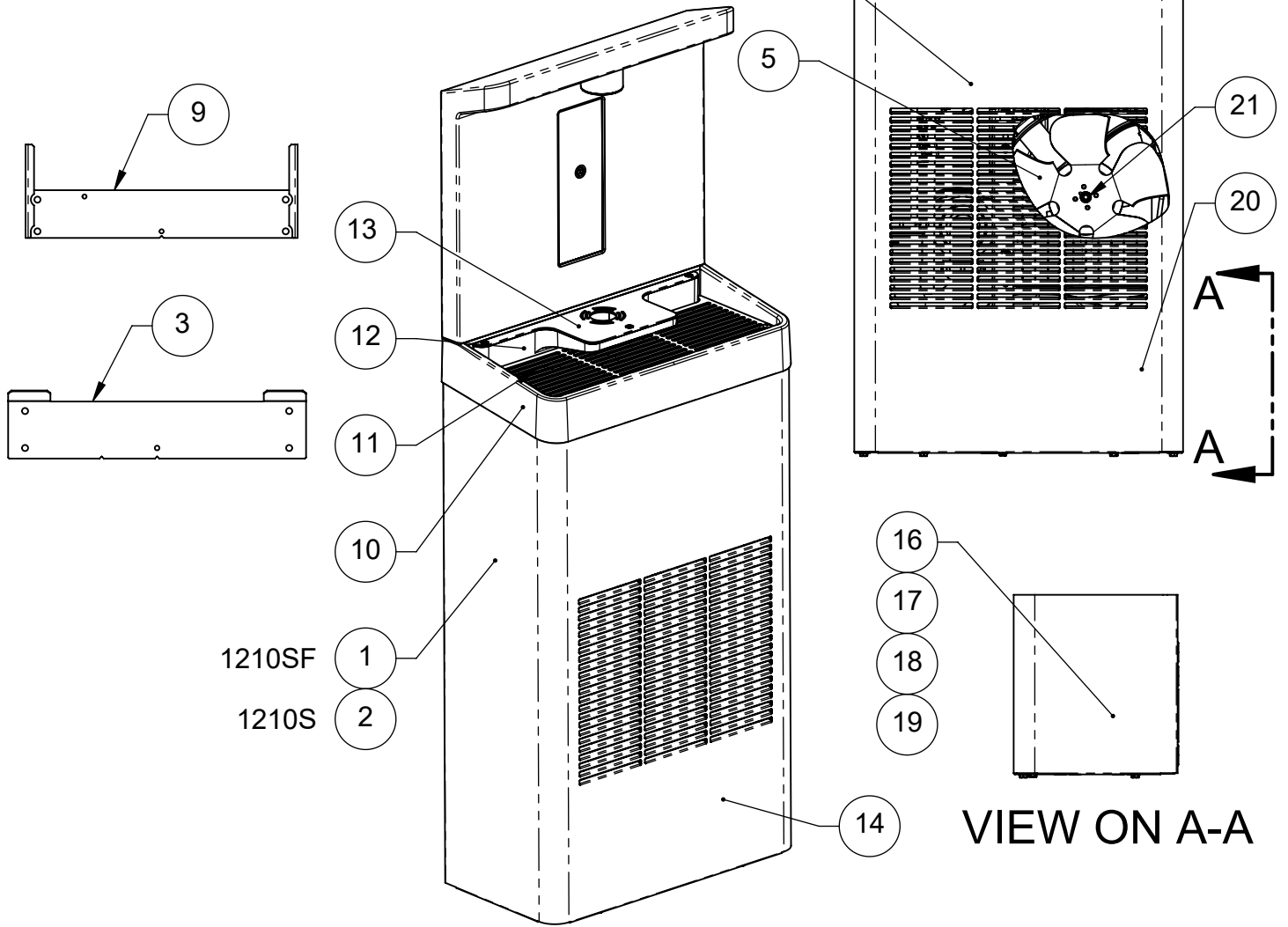


THIS DOCUMENT IS TRUE AND CORRECT AT TIME OF PUBLICATION. CONTINUED PRODUCT IMPROVEMENTS MAKE SPECIFICATIONS AND MEASUREMENTS SUBJECT TO CHANGE WITHOUT NOTICE.

ITEM	DESCRIPTION	1210S	1210SF
1	FILTER		6428
2	Y-STRAINER	6437	
3	LOWER UNIT MOUNTING BRACKET	0410000264	0410000264
4	SOLENOID VALVE	5876	5876
5	FAN BLADE	0510002023	0510002023
6	THERMOSTAT	5810	5810
7	BOTTLE FILLER ASSEMBLY	1930	1930
8	BOTTLE FILLER NOZZLE	VRKNOZ1	VRKNOZ1
9	BOTTLE FILLER MOUNTING BRACKET	0410000265	0410000265
10	DRAIN BASIN	0410000746	0410000746
11	DRAIN GRATE	0410000748	0410000748
12	PLATFORM SUPPORT	0410000747	0410000747
13	PLATFORM	0410000749	0410000749
14	SKIRT	SK14	SK14
15	BOTTLE FILLER SENSOR AND DISPLAY	1931	1931
16	COMPRESSOR THERMAL PROTECT FOR UNITS WITHOUT SN PREFIX	HC115	HC115
17	COMPRESSOR START RELAY FOR UNITS WITHOUT SN PREFIX	HC116	HC116
18	COMPRESSOR THERMAL PROTECT FOR UNITS WITH "J" SN PREFIX	HP115	HP115
19	COMPRESSOR START RELAY FOR UNITS WITH "J" SN PREFIX	HP116	HP116
20	COMPRESSOR CAPACITOR FOR UNITS WITH "J" SN PREFIX	HP119	HP119
21	FAN MOTOR FOR UNITS WITHOUT SN PREFIX	HC117	HC117



		1455 KLEPPE LANE SPARKS, NEVADA 89431 (775) 359-4712 FAX (775) 359-7424 E-MAIL: HAWS@HAWS.CO.COM WEBSITE: WWW.HAWS.CO.COM	
		ECN: 5647 REV. ECN: 5883 DRAWN: DATE: 05/11/23 APPROVED: DHP	BY: JU CHKD: JU DATE: 05/11/23
WHEN ORDERING PARTS, PLEASE SPECIFY PART NUMBER		SCALE: 1:8 DRAWING TYPE: PARTS BREAKDOWN SIZE: A	SHEET 1 OF 1