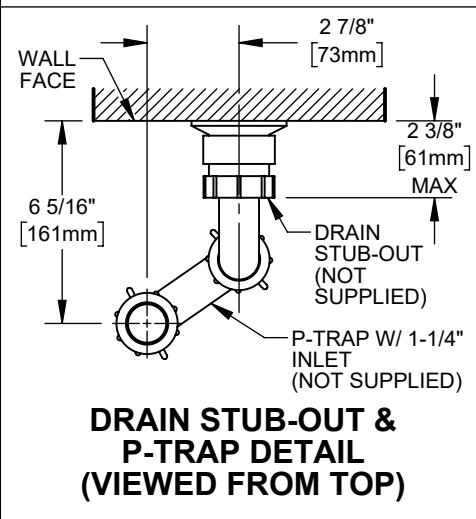


NOTES:

1. HOLD PLUMBING & ELECTRICAL DIMENSIONS $\pm 1/4"$ (6.4mm). HOLD MOUNTING DIMENSIONS $\pm 1/8"$ [± 3.2 MM].
2. ADHERING TO PROVIDED INSTALLATION HEIGHT DIMENSIONS WILL ALLOW THE BOTTLE FILLER TO BE INSTALLED AT ADULT ADA HEIGHT. IN MOST CASES, DIMENSIONS MARKED * CAN BE INCREASED BY UP TO 4" IN EQUIVALENT AMOUNTS. WHEN INSTALLING THIS UNIT, LOCAL, STATE, OR FEDERAL CODES SHOULD BE ADHERED TO.

TYPICAL INSTALLATION (SOME COMPONENTS HIDDEN FOR CLARITY)



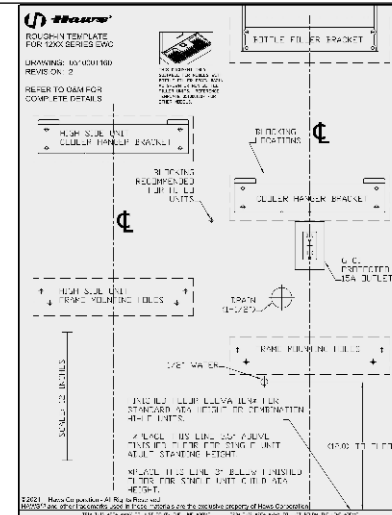
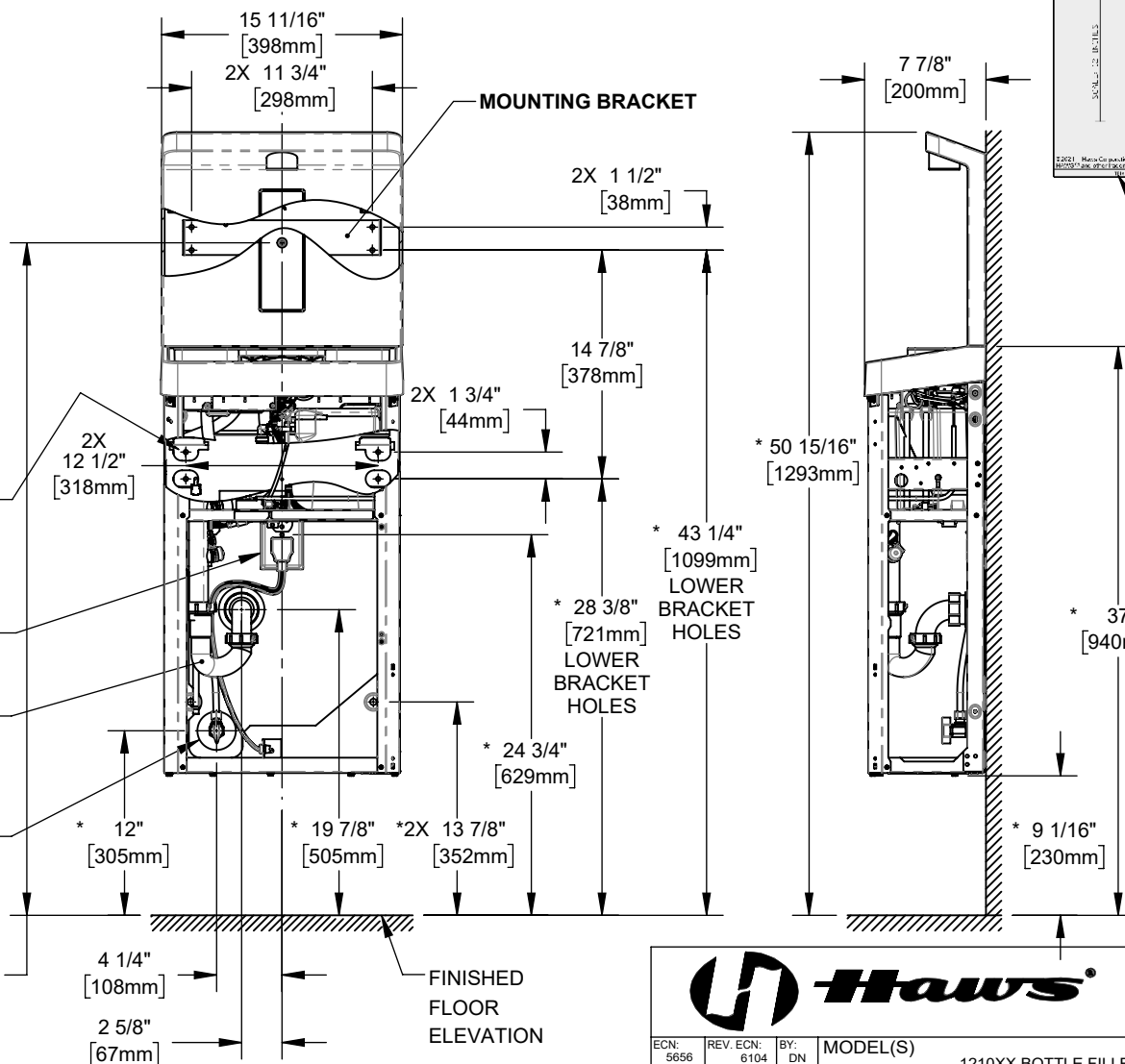
120VAC GFCI-PROTECTED ELECTRICAL RECEPTACLE, MIN. 15A SERVICE (USE STANDARD SIZE 4.5X2.75" WALLPLATE). DEDICATED CIRCUIT RECOMMENDED

P-TRAP W/1-1/4" INLET (NOT SUPPLIED)

SUPPLY VALVE (NOT SUPPLIED; REC. 90° VALVE W/ 1/2" IPS SUPPLY & 3/8" COMPRESSION OR QUICK CONNECT TUBING OUTLET)

MOUNTING BRACKET

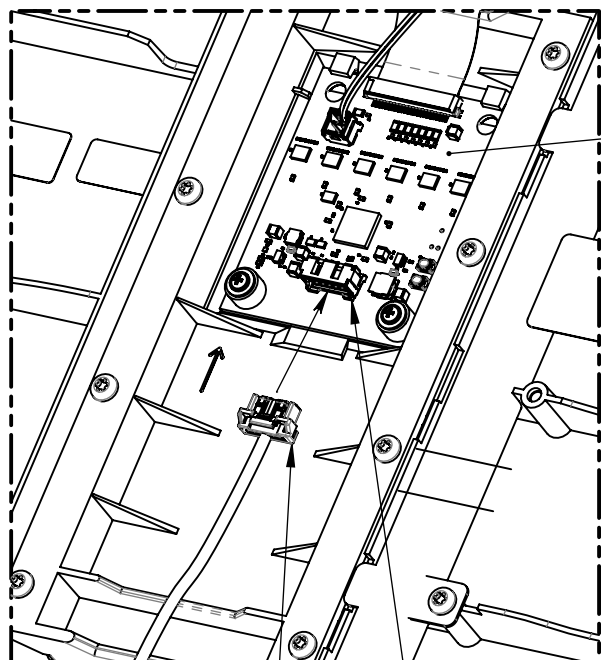
* 43 3/4" [1111mm] SENSOR



1455 KLEPPE LANE
SPARKS, NEVADA 89431
(775) 359-4712 FAX (775) 359-7424
E-MAIL: HAWS@HAWS.CO.COM
WEBSITE: WWW.HAWS.CO.COM

ECN: 5656	REV. ECN: 6104	BY: DN	MODEL(S)	PART NUMBER
DRAWN:	DATE:	CHKD: DN	1210XX BOTTLE FILLERS	0510001159.D
APPROVED: DHP	DATE: 09/24/24	SCALE: 1:12	DRAWING TYPE: INSTALLATION	REVISION
			SIZE: A	5
				SHEET 1 OF 5

BOTTLE FILLER INSTALLATION DETAILS

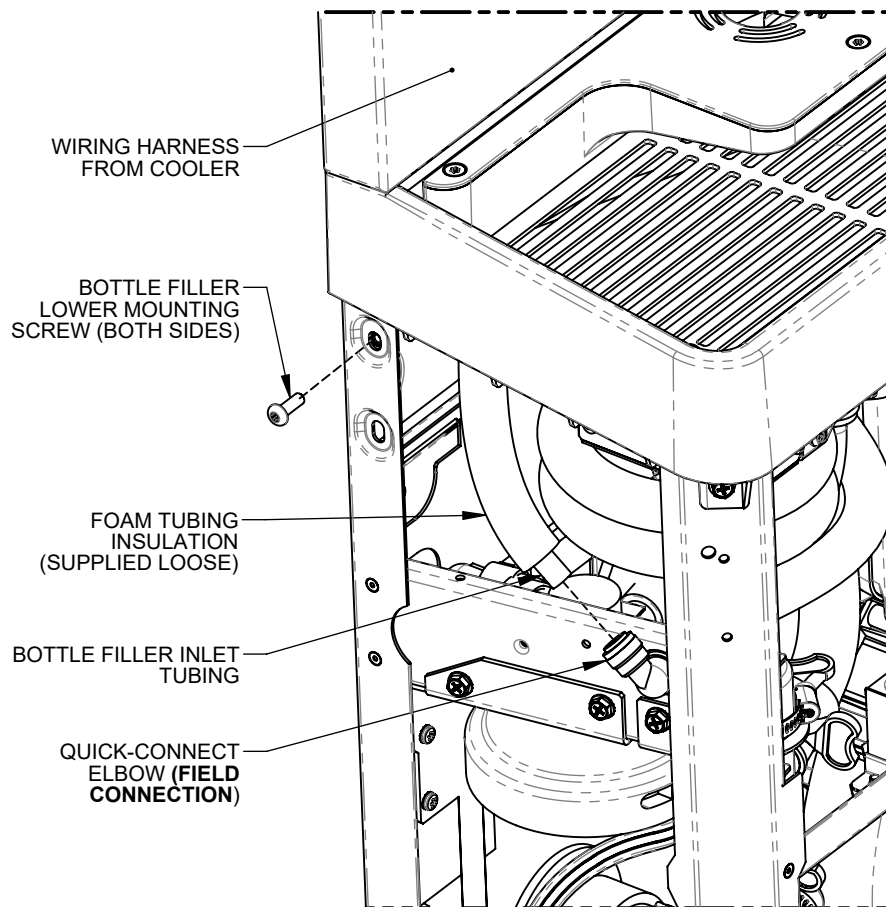


CIRCUIT BOARD

WIRING HARNESS FROM COOLER

WIRING HARNESS RECEPTACLE (FIELD CONNECTION)

WIRING HARNESS CONNECTION (REAR OF BOTTLE FILLER)



WIRING HARNESS FROM COOLER

BOTTLE FILLER LOWER MOUNTING SCREW (BOTH SIDES)

FOAM TUBING INSULATION (SUPPLIED LOOSE)

BOTTLE FILLER INLET TUBING

QUICK-CONNECT ELBOW (FIELD CONNECTION)

BOTTLE FILLER MOUNTING & TUBING CONNECTION



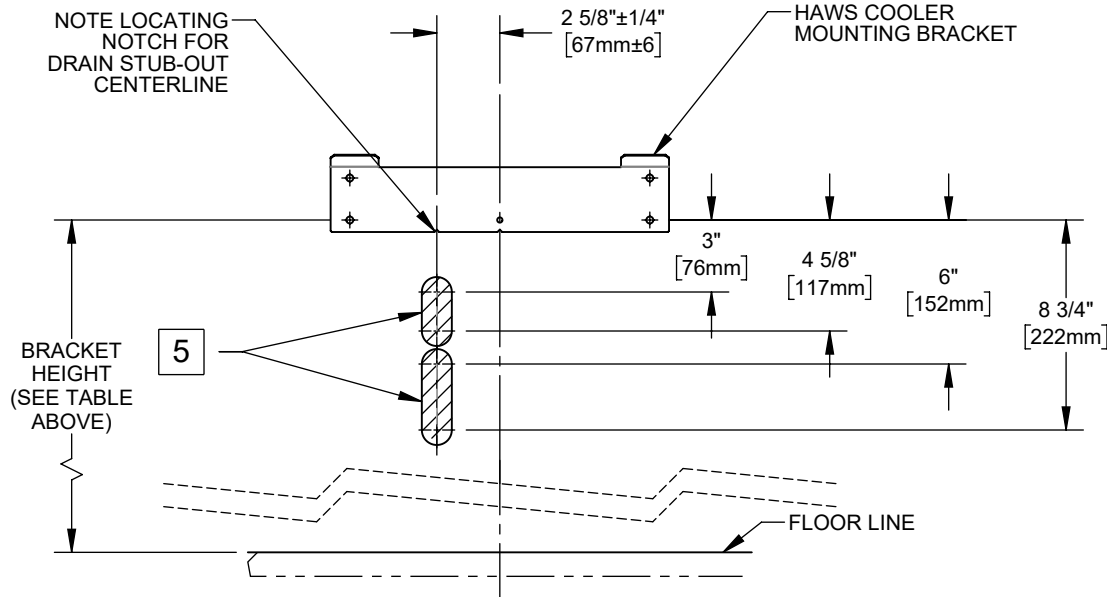
1455 KLEPPE LANE
SPARKS, NEVADA 89431
(775) 359-4712 FAX (775) 359-7424
E-MAIL: HAWS@HAWS.CO.COM
WEBSITE: WWW.HAWS.CO.COM

ECN: 5656	REV. ECN: 6104	BY: DN	MODEL(S)	PART NUMBER
DRAWN:	DATE:	CHKD: DN	1210XX BOTTLE FILLERS	0510001159.D
APPROVED: DHP	DATE: 09/24/24	SCALE: 1:12	DRAWING TYPE: INSTALLATION	REVISION 5
			SIZE: A	SHEET 2 OF 5

RETROFIT INSTALLATION DETAILS

BRACKET HEIGHT

ADULT ADA MAX	ADULT ADA MIN	CHILD ADA
32 3/8"	28 3/8"	25 3/8"



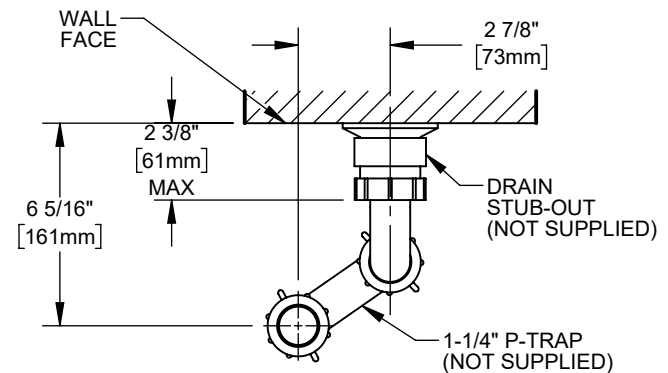
PERMISSIBLE LOCATIONS FOR DRAIN STUB-OUT

NOTES:

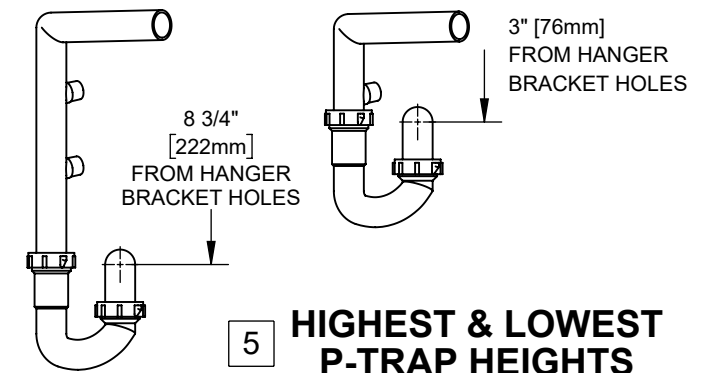
- THE 12XX COOLER SERIES IS ABLE TO RETROFIT IN PLACE OF A NUMBER OF COMPETITOR MODELS. SEE RETROFIT TABLE ABOVE FOR PARTIAL LIST OF COOLERS ABLE TO BE REPLACED BY THIS ONE.
THE FOLLOWING DISCLAIMERS APPLY:
 - THE 12XX COOLER CENTERLINE MAY NOT MATCH THE OLD COOLER'S CENTERLINE, SINCE THE 12XX COOLER DRAIN MUST BE 2 5/8" OFF OF CENTER. THIS MAY AFFECT ADA COMPLIANCE.
 - THERE MUST BE WALL BLOCKING OR OTHER STRUCTURAL MATERIAL BEHIND HAWS MOUNTING HOLES.
 - VERIFY THAT DRAIN, ELECTRIC, & WATER SERVICES ARE LOCATED WITHIN BOUNDARIES SPECIFIED ON THIS SHEET AND THE NEXT. SOME RETROFITS MAY REQUIRE THE ELECTRIC OUTLET TO BE MOVED.
- THE P-TRAP IS NOT SUPPLIED. THE VERTICAL DIMENSIONS GIVEN ARE BASED UPON INSTALLATION USING OF A KEENEY 200W P-TRAP, AND SHOULD THEREFORE BE REGARDED AS REFERENCE-ONLY.
- THE CENTERLINE OF THE DRAIN STUB-OUT MUST BE BETWEEN 3" [76mm] & 4-5/8" [118mm] OR BETWEEN 6" [152mm] & 8-3/4" [229mm] BELOW THE LOWERMOST EWC MOUNTING BRACKET HOLES IN ORDER FOR THE P-TRAP TO AFFIX PROPERLY TO THE DRAIN TAILPIECE.
- DEPENDING ON STUB-OUT HEIGHT, SOME TRIMMING OF THE TAILPIECE WILL BE REQUIRED.
- WHATEVER P-TRAP AND STUB-OUT PLUMBING ARE USED, CARE SHOULD BE TAKEN TO ENSURE THAT THE P-TRAP CAN SEAL TO THE STUB-OUT PROPERLY AND STILL ALIGN TO THE DRAIN TAILPIECE (LOCATED AT THE GIVEN DIMENSIONS).

3 RETROFIT TABLE

MANUFACTURER	MODEL
HAWS	ALL MODELS STARTING WITH HWUACP
ELKAY/HALSEY TAYLOR	- ALL MODELS STARTING WITH EB, EI, EMA, EN, EZ, HAC HVR, LI, LMA, LZ, TB, & TI - SINGLE COOLER MODELS STARTING WITH VRC & LVR
OASIS	ALL VERSACOOLER II MODELS
SUNROC	ALL MODELS STARTING WITH ADA A171, A171.8, & A172.8UBL MODELS
MURDOCK	NOTE: THE WATER STOP VALVE MUST BE RELOCATED TO RETROFIT A FILTERED 12XX COOLER



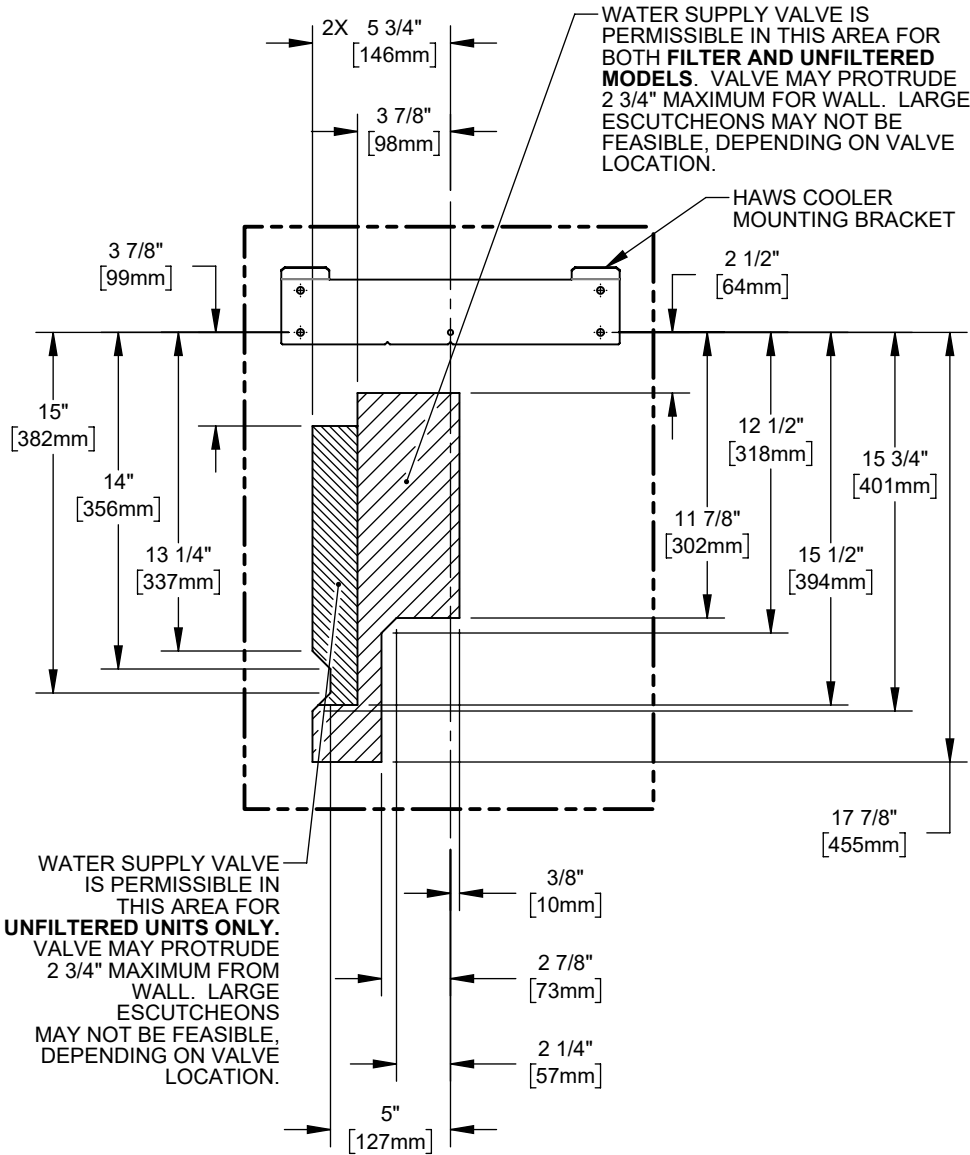
6 DRAIN STUB-OUT/P-TRAP DETAIL (VIEWED FROM TOP)



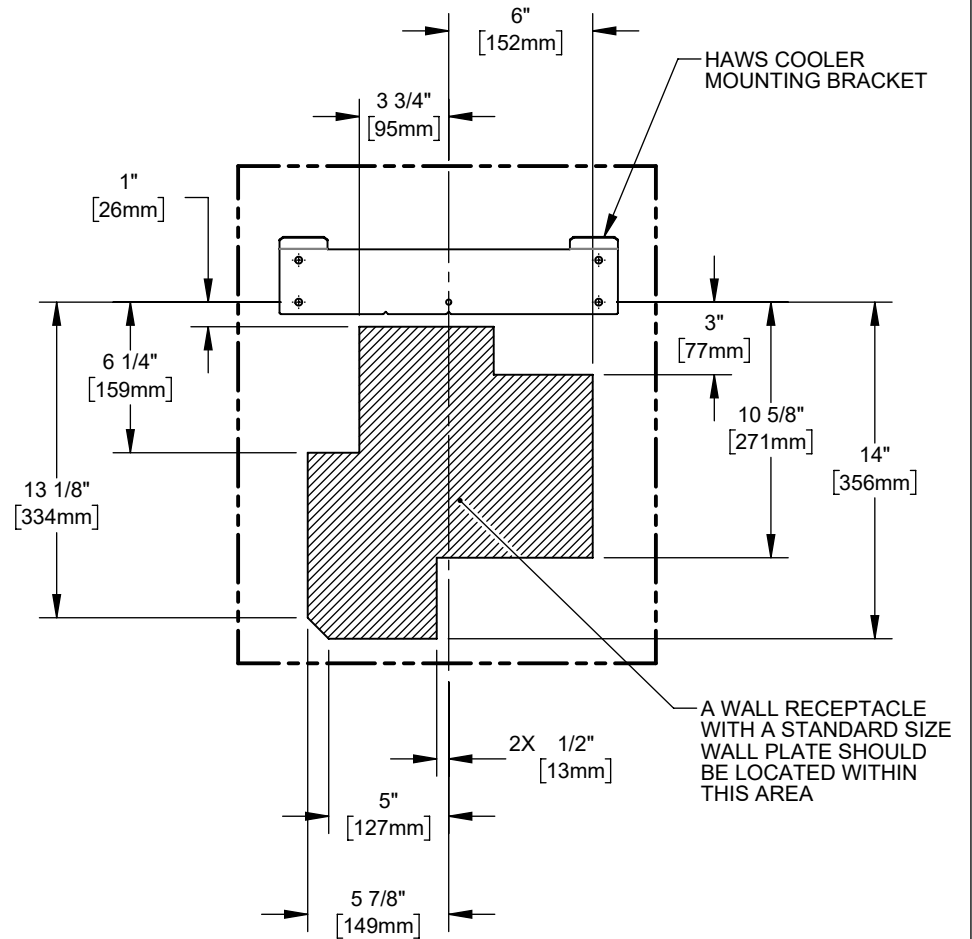
1455 KLEPPE LANE
SPARKS, NEVADA 89431
(775) 359-4712 FAX (775) 359-7424
E-MAIL: HAWS@HAWS.CO.COM
WEBSITE: WWW.HAWS.CO.COM

ECN: 5656	REV. ECN: 6104	BY: DN	MODEL(S)	PART NUMBER
DRAWN:	DATE:	CHKD: DN	1210XX BOTTLE FILLERS	0510001159.D
APPROVED: DHP	DATE: 09/24/24	SCALE: 1:8	DRAWING TYPE: INSTALLATION	REVISION 5
			SIZE: A	SHEET 3 OF 5

RETROFIT INSTALLATION DETAILS



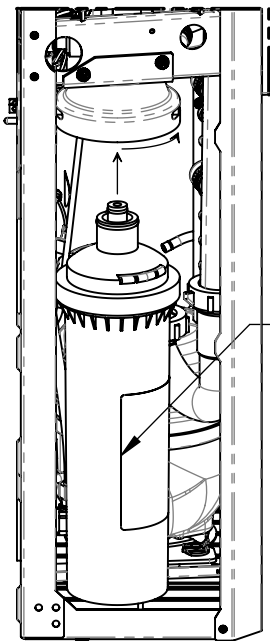
**PERMISSIBLE WATER
SUPPLY LOCATIONS**



**PERMISSIBLE ELECTRICAL
RECEPTACLE LOCATIONS**

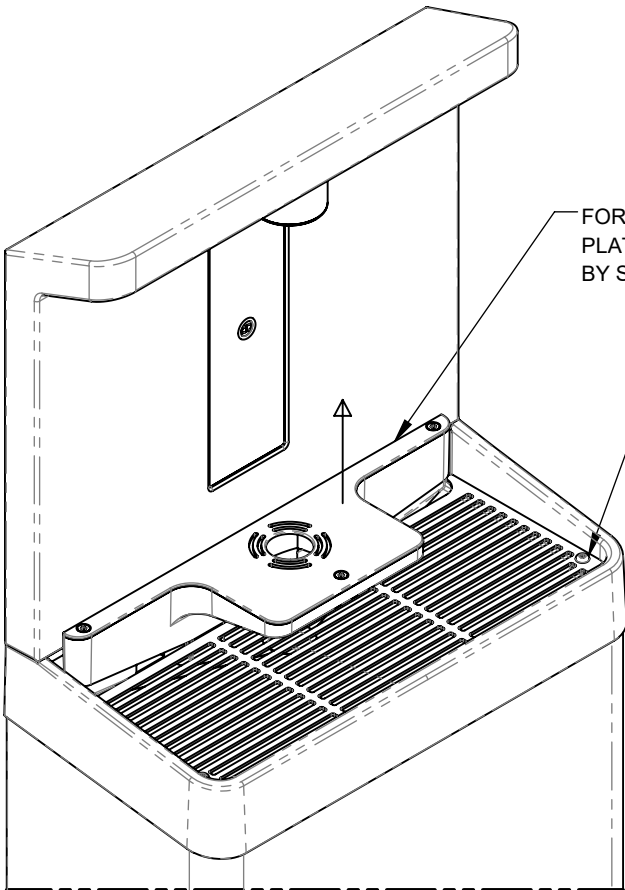
				1455 KLEPPE LANE SPARKS, NEVADA 89431 (775) 359-4712 FAX (775) 359-7424 E-MAIL: HAWS@HAWS.CO.COM WEBSITE: WWW.HAWS.CO.COM			
ECN: 5656	REV. ECN: 6104	BY: DN	MODEL(S) 1210XX BOTTLE FILLERS		PART NUMBER 0510001159.D		
DRAWN:	DATE:	CHKD: DN			REVISION 5		
APPROVED: DHP	DATE: 09/24/24	SCALE: 1:8	DRAWING TYPE: INSTALLATION	SIZE: A	SHEET 4 OF 5		

MAINTENANCE



NOTE THE LEFT EDGE OF THE LABEL FACING OUT THE SIDE DURING INSERTION OF FILTER INTO FILTER HEAD

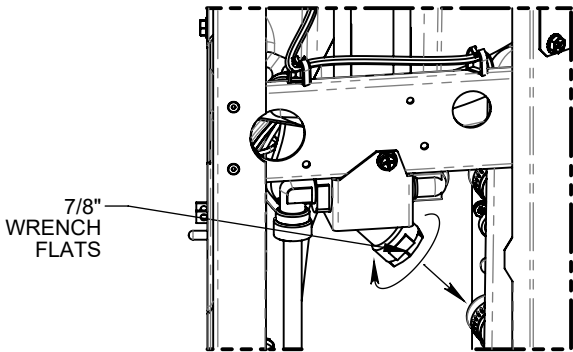
FILTER REPLACEMENT



FOR EASIER CLEANING, PLATFORM CAN BE RAISED 3/4" BY SLIDING UP.

2X SCREWS CAN BE REMOVED TO ALLOW REMOVAL OF GRATE.

CLEANING DRAIN BASIN AREA



7/8" WRENCH FLATS

Y-STRAINER CLEANING



1455 KLEPPE LANE
SPARKS, NEVADA 89431
(775) 359-4712 FAX (775) 359-7424
E-MAIL: HAWS@HAWSO.COM
WEBSITE: WWW.HAWSO.COM

ECN: 5656	REV. ECN: 6104	BY: DN	MODEL(S)	PART NUMBER
DRAWN:	DATE:	CHKD: DN	1210XX BOTTLE FILLERS	0510001159.D
APPROVED: DHP	DATE: 09/24/24	SCALE: 1:8	DRAWING TYPE: INSTALLATION	REVISION
			SIZE: A	5
				SHEET 5 OF 5