

## FEATURES & BENEFITS

### PUSH BUTTON

With its patented stainless steel, push-button activated valve assembly which allows for front access stream adjustment as well as cartridge and strainer access, this bottle filler offers 100% lead free waterways. The valve works at an operating pressure range of 30 to 90 psi (2.1 to 6.2 bar).

### CONSTRUCTION

Unit is made of 14 gauge Type 304 stainless steel with a satin finish that resists stains and corrosion, and has soft rounded corners. Unit features vandal-resistant bottom plate and dispensing nozzle.

### LAMINAR FLOW

Adjustable, splash-free, 1 gpm (3.78 L) laminar water flow

### IN-WALL DRAIN

Drip tray captures unused water and lets it drain to the facilities waste lines

### DURABLE BUILD

Good for indoor or outdoor applications (in non-freezing areas). Made with 100% Stainless Steel for vandal resistance

### MOUNTING OPTIONS

Select from mounting plate models to complete installation. Unit can mount on various wall types

### VANDAL RESISTANT

All chrome plated brass push button resists vandalism by allowing it to spin without unscrewing.



## SPECIFICATIONS

Model 1922 wall mounted bottle filler and drain shall include 100% lead-free waterways, satin stainless steel construction, 1 gpm (3.78 L) laminar flow, push-button operated stainless steel valve with front-accessible cartridge and flow adjustment, drip tray drain, and stainless steel back panels. In extreme environments related to heat and cold, product(s) must be protected from damage/exposure due to these extreme conditions.

**This product requires mounting plates for the bottle filler and drain pan; either the 6700 in-wall or the 6700R on-wall support plate.**

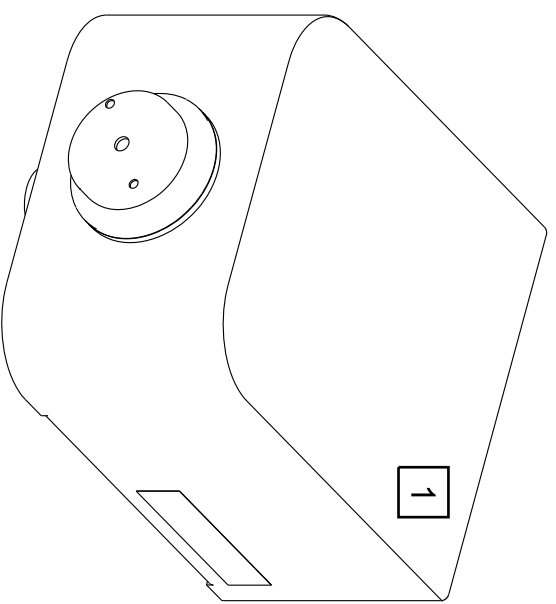
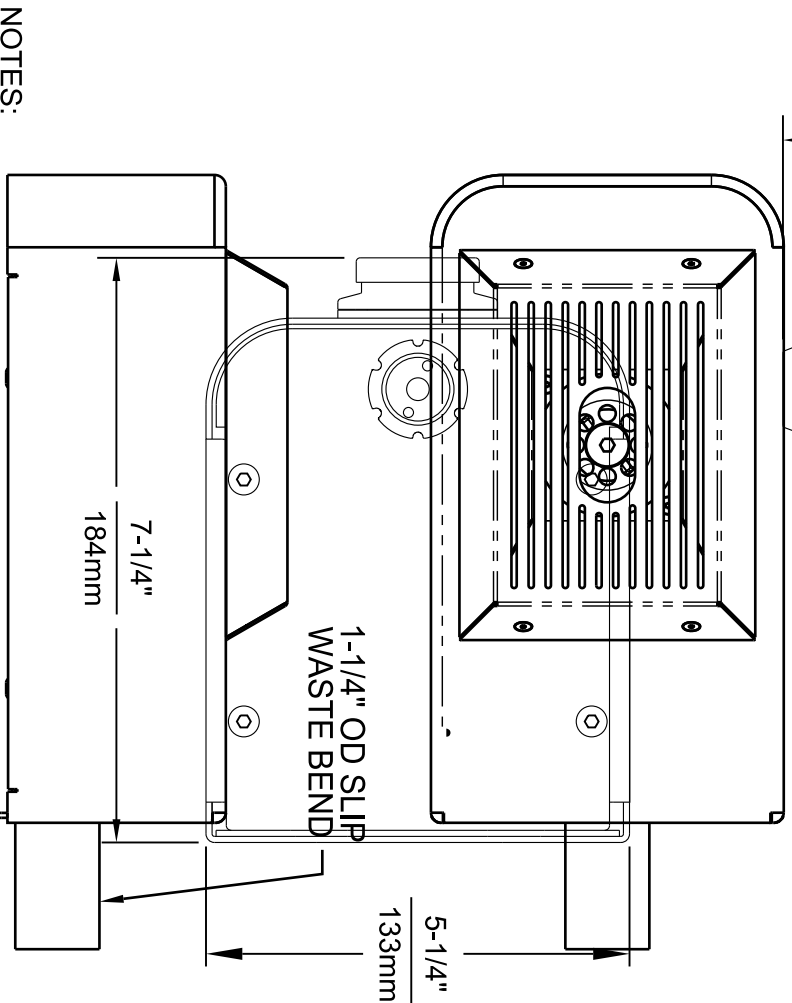
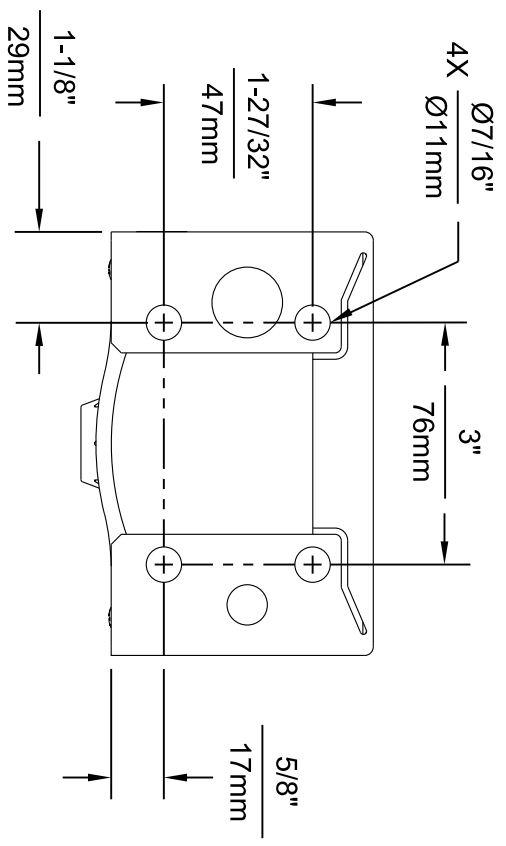
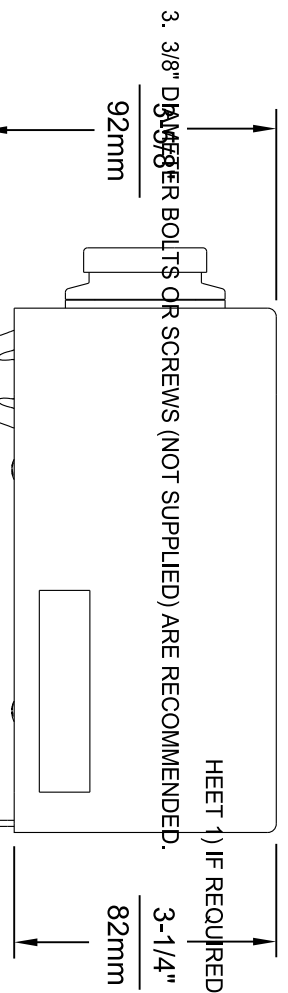
## OPTIONS

- Water Filter: Model 6480 filter kit with 3000 gallon carbon block filter, filter head, and mounting bracket.
- Mounting Plate: Model 6700R, on-wall mounting plate for model 1920.
- Mounting Plate: Model 6700, in-wall mounting plate for model 1920.
- Support Frame: Model 6800 In-wall floor mounted fixture support legs, welded steel 4-bolt floor flanges, and supplied with 'U' bolts and hardware.

For more information, visit [www.hawscow.com](http://www.hawscow.com) or call (888) 640-4297.

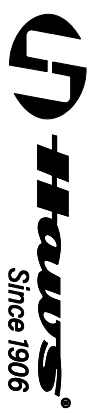
## APPLICATIONS

Great for business and municipality settings, indoors and out, this bottle filler can be placed virtually anywhere. It also compliments drinking fountains already in use. Haws manufactures drinking fountains, faucets and electric water coolers to be lead-free by all known definitions including NSF/ANSI/CAN 61- Section 9, NSF/ANSI/CAN 372, California Proposition 65, and the Federal Safe Drinking Water Act. Product is compliant to California Health and Safety Code 116875 (AB 1953-2006), and 116876 (AB 100) "NSF/ANSI/CAN 61: Q ≤ 1".



NOTES:

1. SEE SEPARATE INSTALLATION DRAWINGS FOR MOUNTING PLATES AND BACK PANELS.
2. WHEN INSTALLING THIS UNIT, LOCAL, STATE OR FEDERAL CODES SHOULD BE ADHERED TO FOR INSTALLATION LOCATIONS, WASTE & SUPPLY REQUIREMENTS OTHER THAN SHOWN.



1456 KLEPPE LANE  
SPARKS, NEVADA 89431  
(775) 359-4712 FAX (775) 359-7424  
E-MAIL: HAWS@HAWS.CO.COM  
WEBSITE: WWW.HAWS.CO.COM

MODEL(S)  
5607 6268 FV  
DP 1110220 JG  
1922

0580001129.D