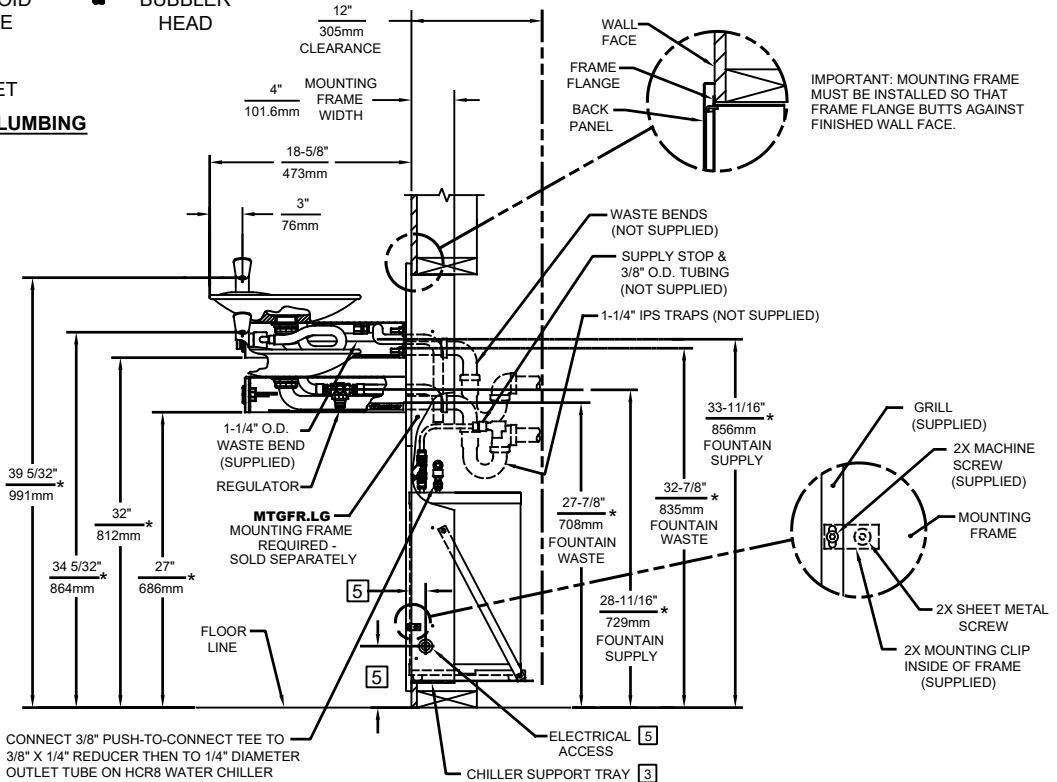
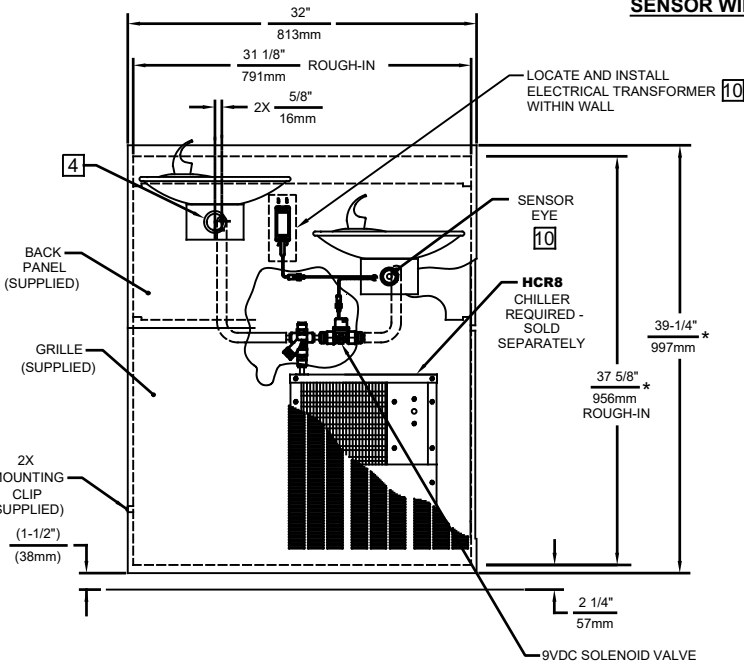


**SENSOR WIRING / SUPPLY PLUMBING SCHEMATIC**

NOTES:

1. HOLD ROUGH-IN DIMENSIONS  $\pm 1/8"$  (3.2mm).
2. WHEN INSTALLING THIS UNIT, LOCAL, STATE, OR FEDERAL CODES SHOULD BE ADHERED TO. FOR INSTALLATION DIMENSIONS (LOCATIONS), WASTE AND SUPPLY REQUIREMENTS OTHER THAN SHOWN, DIMENSIONS MARKED (\*) MUST BE ADJUSTED ACCORDINGLY.
3. ALIGN HOLES IN CHILLER SUPPORT TRAY WITH HOLES IN FRAME AND FASTEN WITH #10 SHEETMETAL SCREWS.
4. REFER TO 5874 SERIES OPERATION AND MAINTENANCE MANUAL FOR PUSH BUTTON AND VALVE INSTALLATION/MAINTENANCE INSTRUCTIONS.
5. REFER TO MTGFR.LG INSTALLATION DRAWING FOR ROUGH-IN DIMENSIONS.
6. INSERT 5/16"-18 PANEL INSERTS FROM OPPOSITE SIDE AT LOCATIONS SHOWN BY DARKENED HOLES. HOLE COMBINATIONS SHOWN ARE FOR USE WITH LOW FOUNTAIN ON THE RIGHT AND HI FOUNTAIN ON THE LEFT. USE OPPOSITE HOLES FOR HI ON RIGHT AND LOW ON LEFT.
7. HOLE COMBINATION SHOWN BELOW IS FOR USE WITH LOW FOUNTAIN ON THE RIGHT AND HIGH FOUNTAIN ON THE LEFT. USE OPPOSITE HOLES FOR HIGH ON RIGHT AND LOW ON LEFT.
8. TO CHANGE FOUNTAIN MTG. SCREW LOCATIONS: FIRST REMOVE SCREWS AND THEN SQUEEZE CLIPS ON NUT RETAINER TO POP OUT. SNAP INTO NEW POSITIONS AND RE-ASSEMBLE SCREWS.
9. IMPORTANT: A L.H. LOW (OPTIONAL) CONFIGURATION WILL REQUIRE A DIFFERENT BACK PANEL AND THE WASTE AND SUPPLY DIMENSIONS SHOWN (\*) MUST BE REVERSED.
10. REFER TO 1RKHO.H & 2RKHO.H OPERATION AND MAINTENANCE INSTRUCTIONS FOR TRANSFORMER AND SENSOR SETUP.

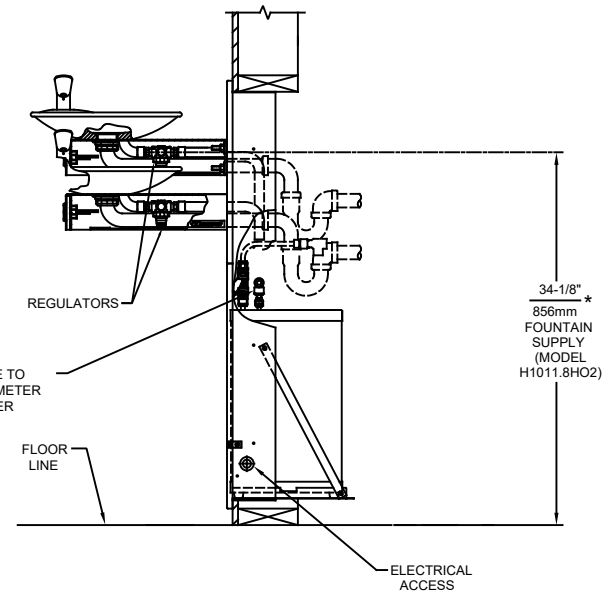
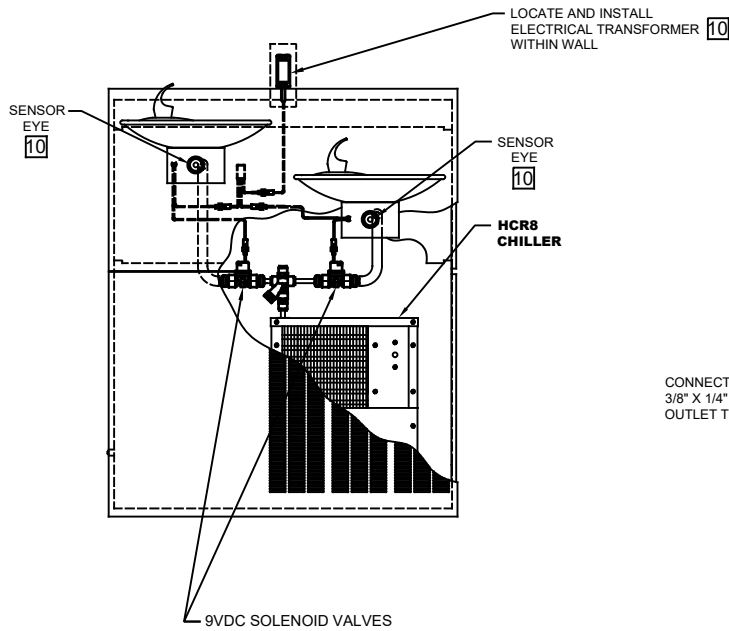
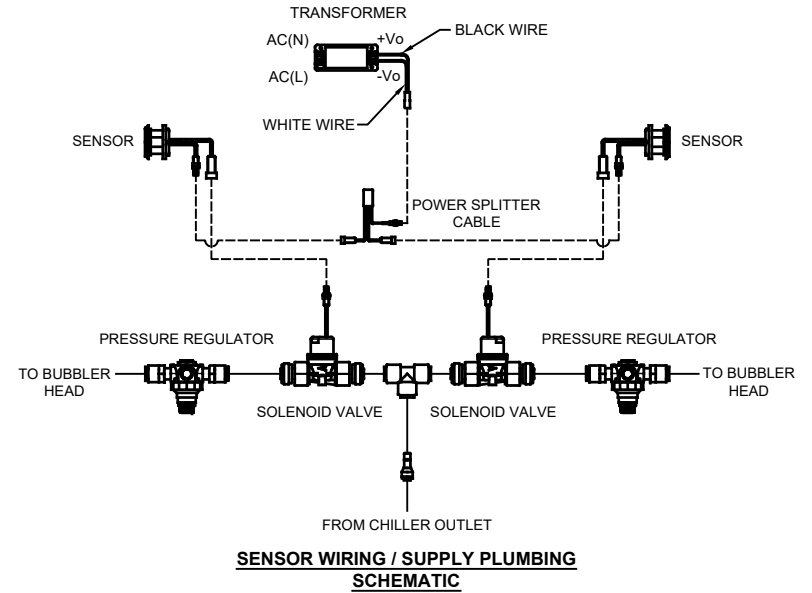
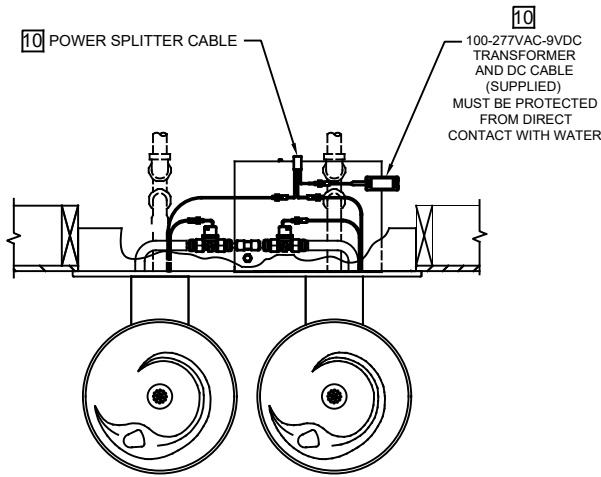


CONNECT 3/8" PUSH-TO-CONNECT TEE TO 3/8" X 1/4" REDUCER THEN TO 1/4" DIAMETER OUTLET TUBE ON HCR8 WATER CHILLER

MODEL H1011.8HO SHOWN  
 MODEL H1011.8HO2 ON SHEET 2  
 (ROUGH-IN DIMENSIONS APPLY TO BOTH MODELS WITH EXCEPTION NOTED ON SHEET 2)

1455 KLEPPE LANE  
 SPARKS, NEVADA 89431  
 (775) 359-4712 FAX (775) 359-7424  
 E-MAIL: HAWS@HAWSCO.COM  
 WEBSITE: WWW.HAWSCO.COM

ECN NO. REVISED PER BY: DP		MODEL(S)		PART NUMBER	
ECN: 5688		H1011.8HO/H1011.8HO2		0002080250.D	
DRAWN: RTM	DATE: 07/97	CHKD.: FV	REVISION		28
APPROVED: BJM	DATE: 05/13/21	SCALE: NA	DRAWING TYPE: INSTALLATION	SIZE: A	SHEET 1 OF 2



CONNECT 3/8" PUSH-TO-CONNECT TEE TO 3/8" X 1/4" REDUCER THEN TO 1/4" DIAMETER OUTLET TUBE ON HCR8 WATER CHILLER

MODEL H1011.8HO2 SHOWN  
 MODEL H1011.8HO ON SHEET 1  
 (SEE SHEET 1 FOR APPLICABLE ROUGH-IN DIMENSIONS)

		1455 KLEPPE LANE SPARKS, NEVADA 89431 (775) 359-4712 FAX (775) 359-7424 E-MAIL: HAWS@HAWS.CO.COM WEBSITE: WWW.HAWS.CO.COM	
		ECN NO. REVISED PER BY: MODEL(S) ECN: 5688 DP	H1011.8HO/H1011.8HO2
DRAWN: FV DATE: 07/22/20 CHK'D: FV	APPROVED: BJM DATE: 05/13/21	SCALE: NA DRAWING TYPE: INSTALLATION	REVISION 28 SHEET 2 OF 2