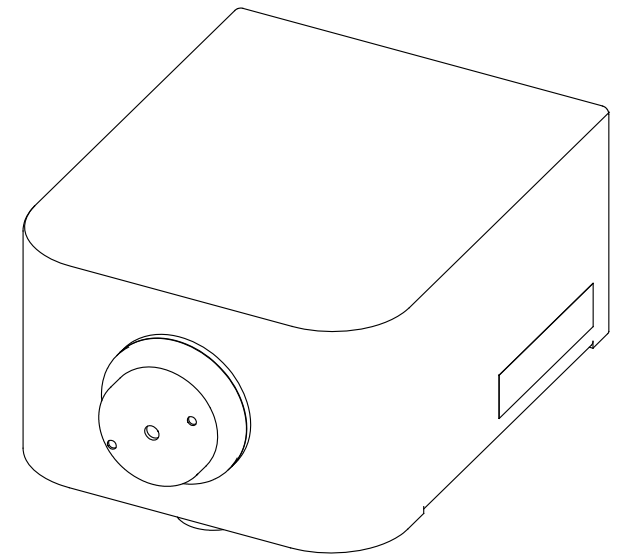
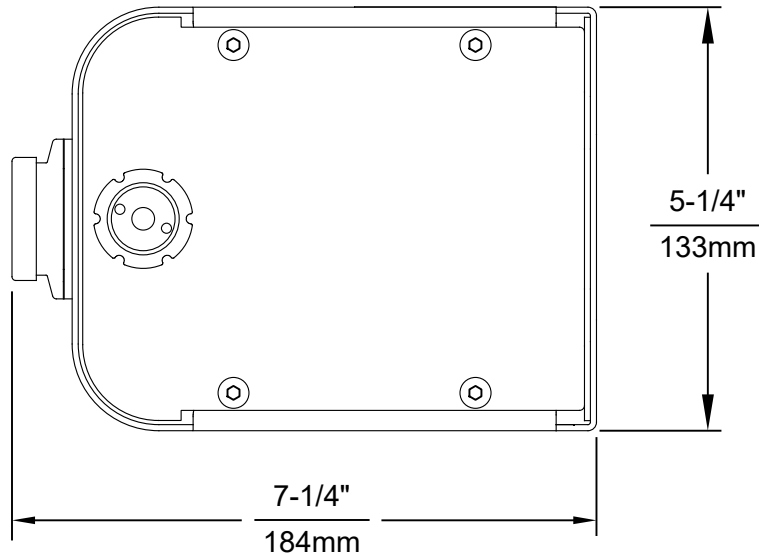



MOUNTING HOLE LOCATIONS



NOTES:

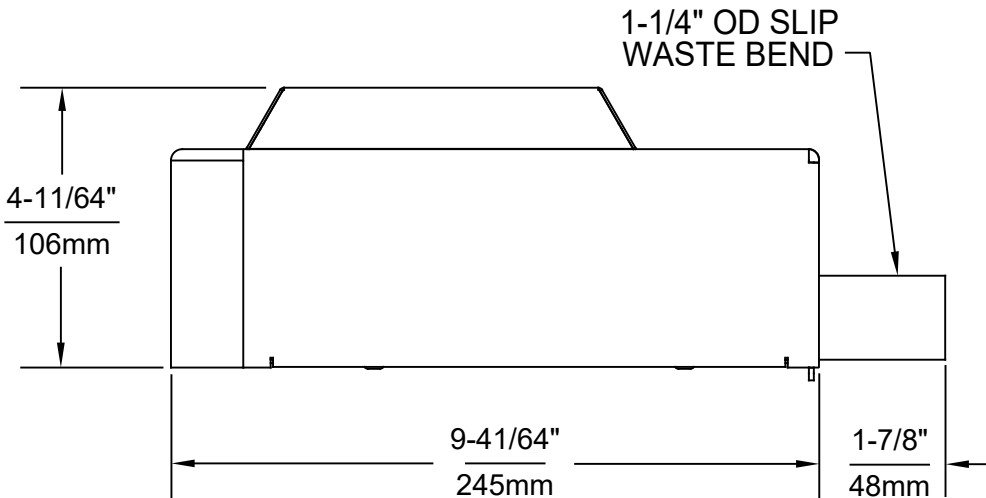
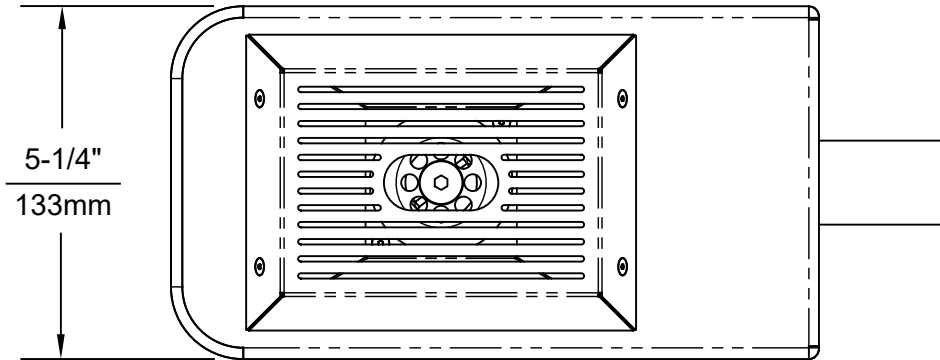
1. SEE SEPARATE INSTALLATION DRAWINGS FOR MOUNTING PLATES AND BACK PANELS.
2. WHEN INSTALLING THIS UNIT, LOCAL, STATE OR FEDERAL CODES SHOULD BE ADHERED TO FOR INSTALLATION LOCATIONS, WASTE & SUPPLY REQUIREMENTS OTHER THAN SHOWN.

BOTTLE FILLER DETAIL SHOWN
WASTE DRAIN TRAY DETAIL ON SHEET 2

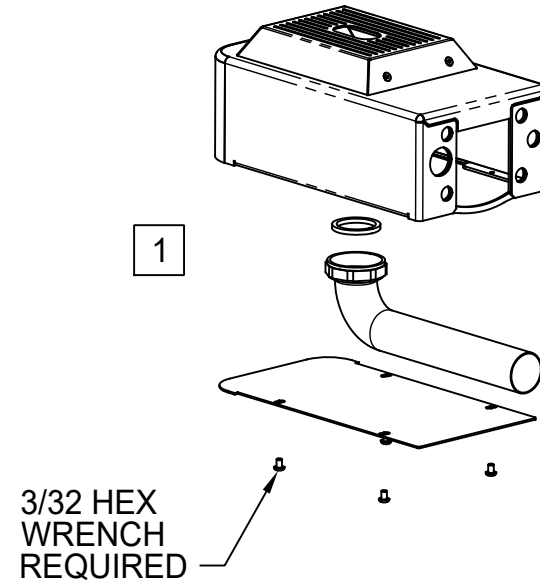
		Haws [®]		1455 KLEPPE LANE SPARKS, NEVADA 89431 (775) 359-4712 FAX (775) 359-7424 E-MAIL: HAWS@HAWSCO.COM WEBSITE: WWW.HAWSCO.COM	
ECN NO. 5607	REVISED PER ECN: 5660	BY: FV	MODEL(S)	PART NUMBER	
DRAWN: DP	DATE: 11/02/20	CHK'D: DP	1922	0580001129.D	
APPROVED: FV	DATE: 03/31/21	SCALE: N/A	DRAWING TYPE:	INSTALLATION	REVISION 2
			SIZE: A	SHEET 1 OF 3	

NOTES:

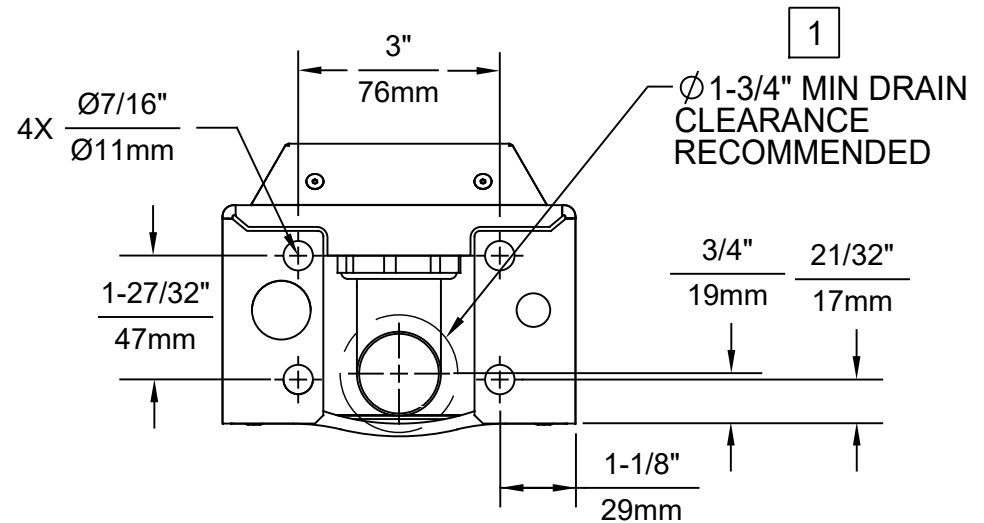
- 1 ASSEMBLE DRAIN WITH NUT AND WASHER AS SHOWN. AFTER INSTALLATION, CAREFULLY SEAL WALL AROUND DRAIN.
2. WHEN INSTALLING THIS UNIT, LOCAL, STATE, OR FEDERAL CODES SHOULD BE ADHERED TO. INSTALL A TRAP IN THE WASTE LINE OF WASTE DRIP TRAY (SHOWN) AND A SCREWDRIVER STOP IN THE SUPPLY LINE OF BOTTLE FILLER UNIT (SHOWN ON SHEET 1) IF REQUIRED.
3. 3/8" DIAMETER BOLTS OR SCREWS (NOT SUPPLIED) ARE RECOMMENDED.



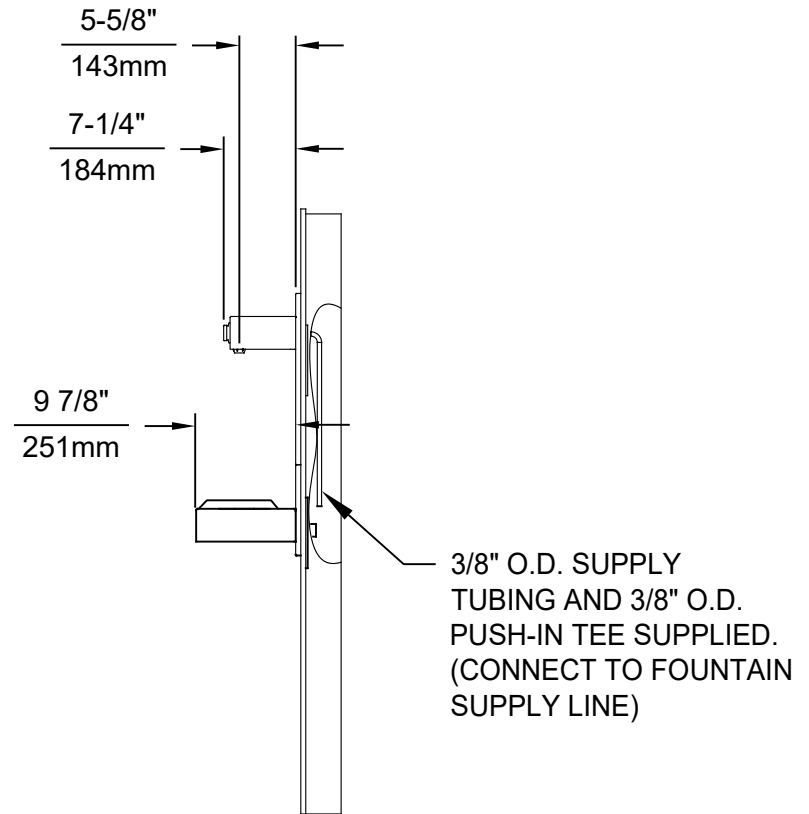
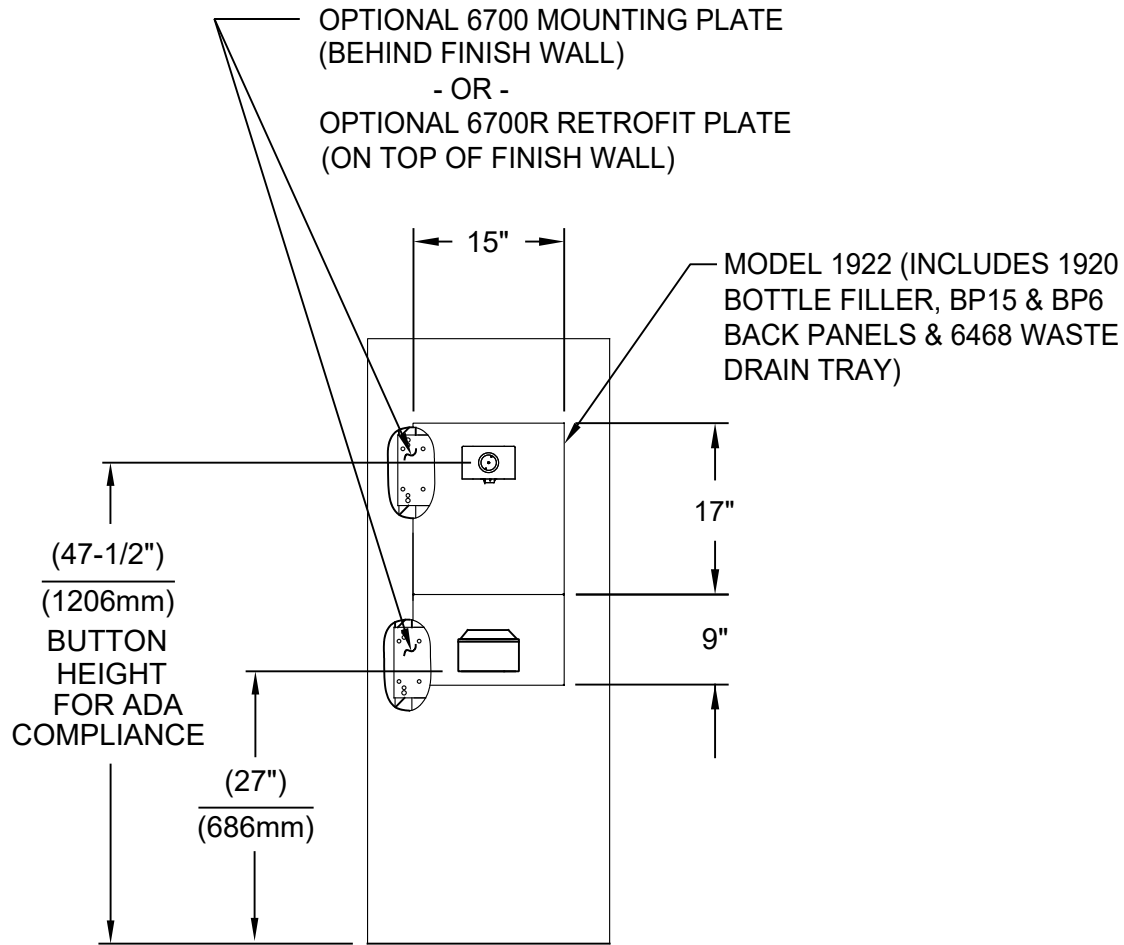
WASTE DRAIN TRAY DETAIL SHOWN
BOTTLE FILLER DETAIL ON SHEET 1



3/32 HEX
WRENCH
REQUIRED




		1455 KLEPPE LANE SPARKS, NEVADA 89431 (775) 359-4712 FAX (775) 359-7424 E-MAIL: HAWS@HAWSKO.COM WEBSITE: WWW.HAWSKO.COM	
ECN NO. 5607	REVISED PER ECN: 5660	BY: FV	MODEL(S) 1922
DRAWN: DP	DATE: 11/02/20	CHK'D: DP	PART NUMBER 0580001129.D
APPROVED: FV	DATE: 03/31/21	SCALE: N/A	REVISION 2
DRAWING TYPE: INSTALLATION		SIZE: A	SHEET 2 OF 3



AMERICANS WITH DISABILITIES ACT (ADA) INSTALLATION HEIGHTS

1. SEE SEPARATE INSTALLATION DRAWINGS FOR MOUNTING PLATES AND BACK PANELS.
2. WHEN INSTALLING THIS UNIT, LOCAL, STATE OR FEDERAL CODES SHOULD BE ADHERED TO FOR INSTALLATION LOCATIONS, WASTE & SUPPLY REQUIREMENTS OTHER THAN SHOWN.

		1455 KLEPPE LANE SPARKS, NEVADA 89431 (775) 359-4712 FAX (775) 359-7424 E-MAIL: HAWS@HAWS.CO.COM WEBSITE: WWW.HAWS.CO.COM	
		ECN NO. 5607 DRAWN: DP APPROVED: FV	REVISED PER: ECN: 5660 DATE: 11/02/20 DATE: 03/31/21
PART NUMBER 0580001129.D REVISION 2			SIZE: A SHEET 3 OF 3