

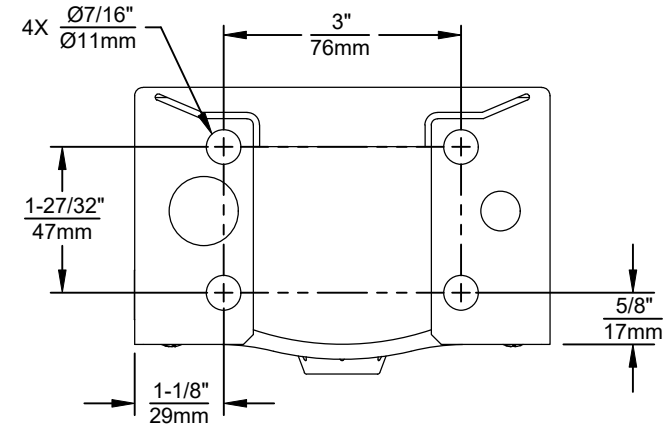
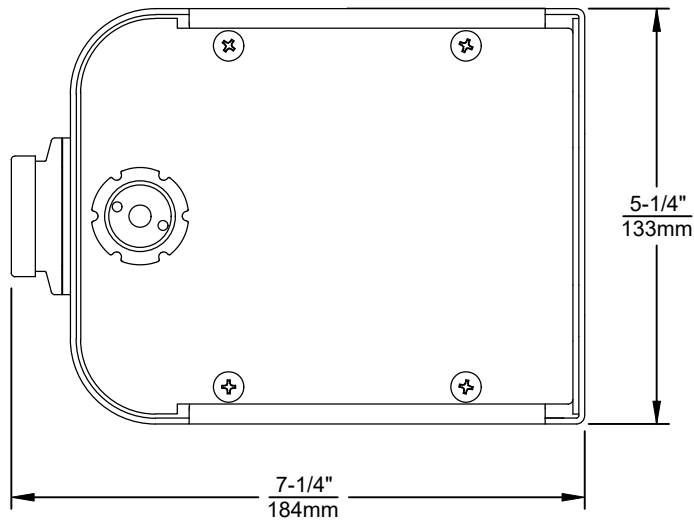
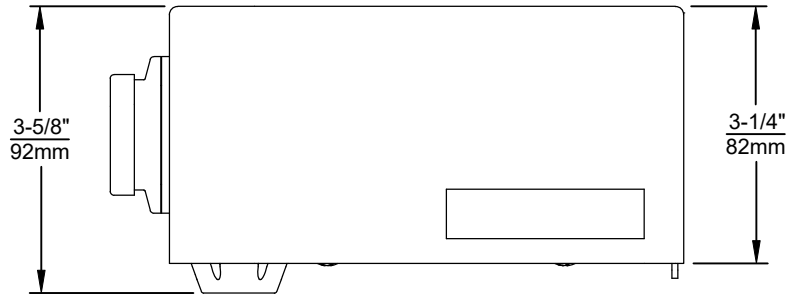
1920 INDEX

INSTALLATION WITH:	TYPICAL USES	SEE SHEET...
1001/1011 BOWLS	HAWS SERIES 1001, H1001.8X, 1011, 1011.8X STYLE FOUNTAINS	3 OF 9
1109/1119 BOWLS		4 OF 9
1107/1117 BOWLS		5 OF 9
1311/1501 BOWLS		6 OF 9
1047		7 OF 9
6468		8 OF 9
CHILD HEIGHT	HAWS 1107P STD CONFIG CHILD HEIGHT, 1109P STD CONFIG CHILD HEIGHT, 1311P STD CONFIG CHILD HEIGHT	9 OF 9

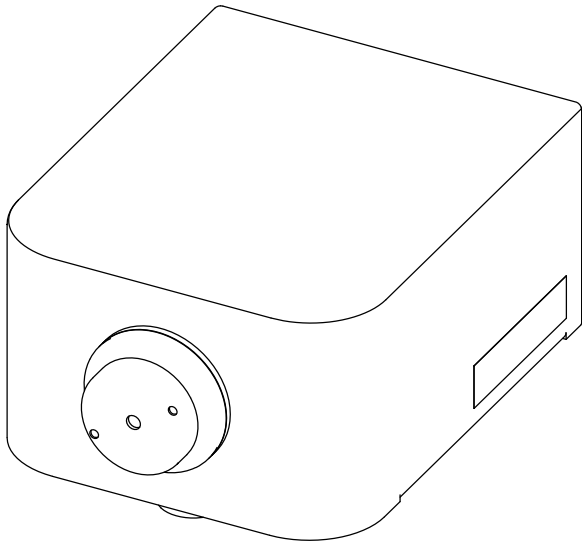


1455 KLEPPE LANE
SPARKS, NEVADA 89431
(775) 359-4712 FAX (775) 359-7424
E-MAIL: HAWS@HAWS.CO.COM
WEBSITE: WWW.HAWS.CO.COM

ECN NO: 5607	REVISED PER ECN: 6131	BY: JG	MODEL(S)	PART NUMBER
DRAWN: FV	DATE: 01/26/24	CHKD: JG	1920/1920HPS/1920W	0510000490.D
APPROVED: RH	DATE: 11/28/24	SCALE: N/A	DRAWING TYPE: INSTALLATION	REVISION 13
			SIZE: A	SHEET 1 OF 9



1920 SERIES MOUNTING HOLE LOCATIONS
(3/8"-16 UNC MOUNTING HARDWARE NOT SUPPLIED)

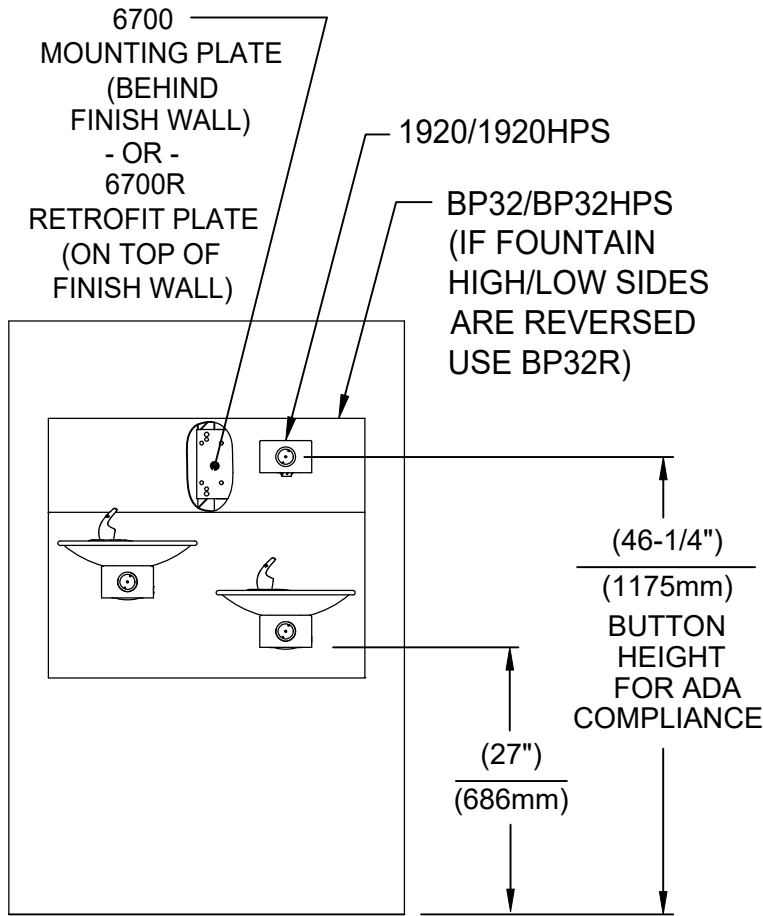


- NOTES:
1. SEE SHEETS 2 THRU 7 FOR BOTTLE FILLER ADULT ADA HEIGHT APPLICATIONS AND SHEET 8 FOR CHILD ADA HEIGHT APPLICATIONS.
 2. WHEN INSTALLING THIS UNIT, LOCAL, STATE OR FEDERAL CODES SHOULD BE ADHERED TO FOR INSTALLATION LOCATIONS, WASTE & SUPPLY REQUIREMENTS OTHER THAN SHOWN.

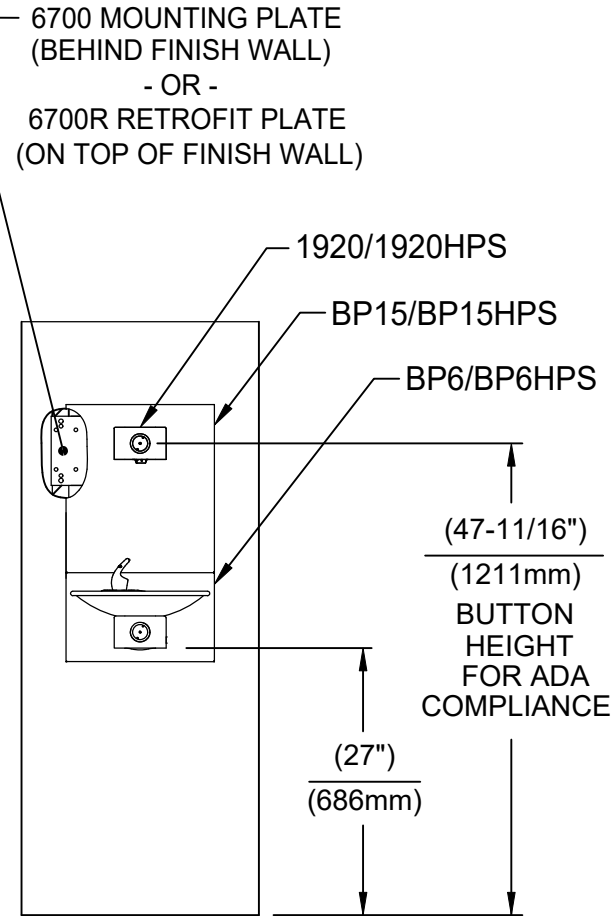


1455 KLEPPE LANE
SPARKS, NEVADA 89431
(775) 359-4712 FAX (775) 359-7424
E-MAIL: HAWS@HAWS.CO.COM
WEBSITE: WWW.HAWS.CO.COM

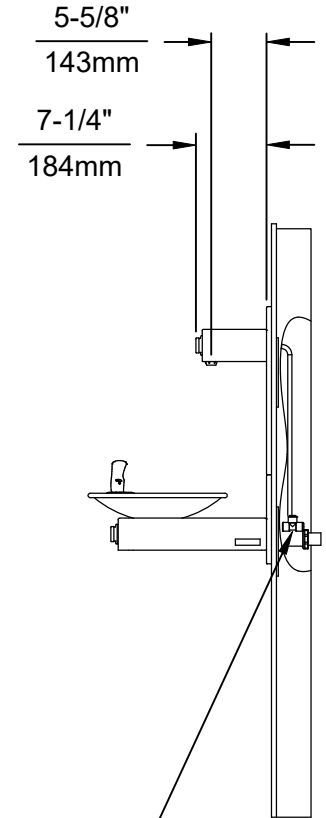
ECN NO. 5081	REVISED PER ECN: 6131	BY: JG	MODEL(S)	PART NUMBER
DRAWN: DS	DATE: 05/25/16	CHKD: JG	1920/1920HPS/1920W	0510000490.D
APPROVED: RH	DATE: 11/28/24	SCALE: N/A	DRAWING TYPE: INSTALLATION	REVISION 13
			SIZE: A	SHEET 2 OF 9



INSTALLATION ABOVE HAWS 1011 & H1011.8 SERIES

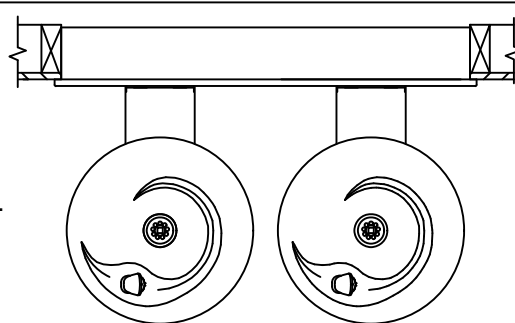


INSTALLATION ABOVE HAWS 1001 & H1001.8 SERIES



* IF YOUR FOUNTAIN IS THIS STYLE USE THESE DIMENSIONS

1. SEE SEPARATE INSTALLATION DRAWINGS FOR MOUNTING PLATES AND BACK PANELS (SHOWN FOR REFERENCE - NOT SUPPLIED).
2. WHEN INSTALLING THIS UNIT, LOCAL, STATE OR FEDERAL CODES SHOULD BE ADHERED TO FOR INSTALLATION LOCATIONS, WASTE & SUPPLY REQUIREMENTS OTHER THAN SHOWN.

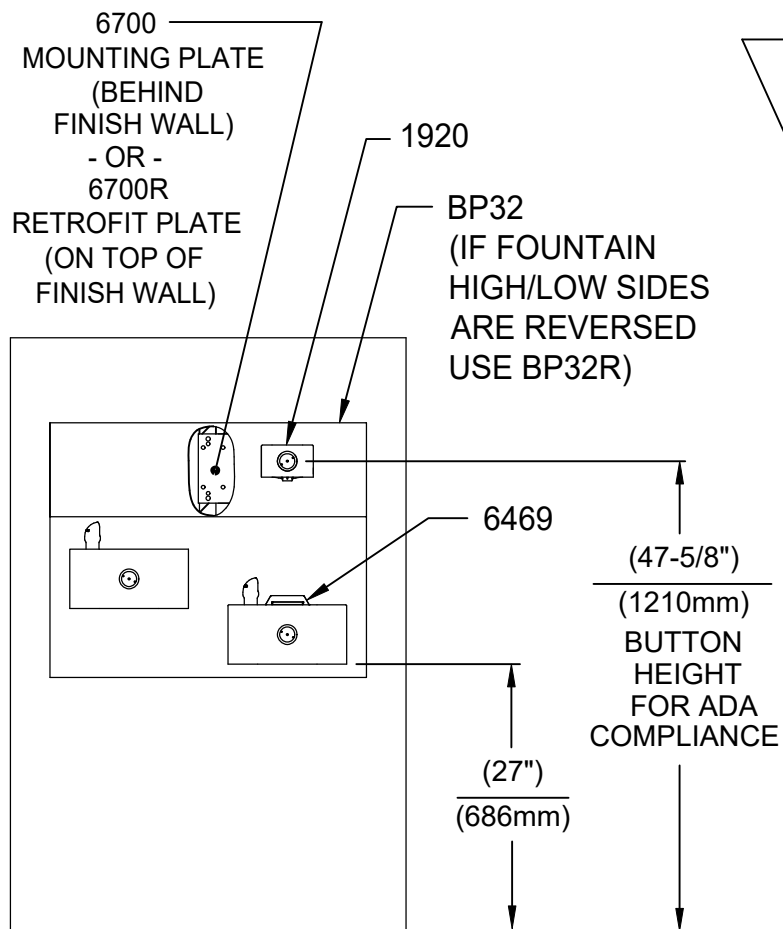


3/8" O.D. SUPPLY TUBING AND 3/8" O.D. PUSH-IN TEE SUPPLIED. (CONNECT TO FOUNTAIN SUPPLY LINE)

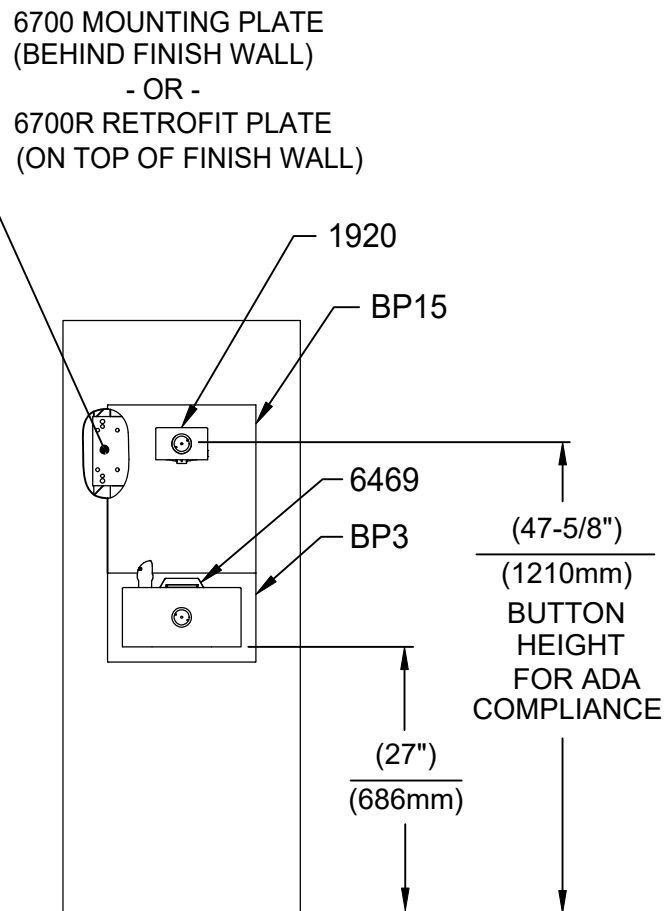


1455 KLEPPE LANE
SPARKS, NEVADA 89431
(775) 359-4712 FAX (775) 359-7424
E-MAIL: HAWS@HAWS.CO.COM
WEBSITE: WWW.HAWS.CO.COM

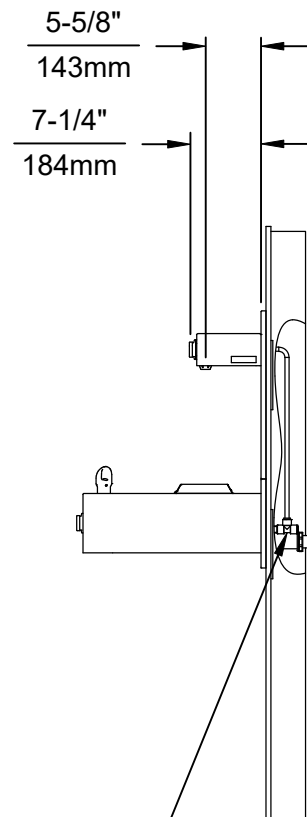
ECN NO. 5081	REVISED PER ECN 6131	BY: JG	MODEL(S)	1920/1920HPS/1920W	PART NUMBER 0510000490.D
DRAWN: MJ	DATE: 01/30/17	CHKD: JG			REVISION 13
APPROVED: RH	DATE: 11/28/24	SCALE: N/A	DRAWING TYPE: INSTALLATION	SIZE: A	SHEET 3 OF 9



INSTALLATION ABOVE HAWS 1119 & H1119.8 SERIES

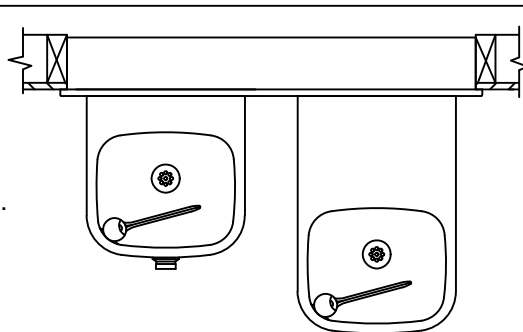


**INSTALLATION ABOVE HAWS 1109 & H1109.8 SERIES
SEE SHEET 8 FOR INSTALLATION AT CHILD HEIGHT**



* IF YOUR FOUNTAIN IS THIS STYLE USE THESE DIMENSIONS

1. SEE SEPARATE INSTALLATION DRAWINGS FOR MOUNTING PLATES AND BACK PANELS (SHOWN FOR REFERENCE - NOT SUPPLIED).
2. WHEN INSTALLING THIS UNIT, LOCAL, STATE OR FEDERAL CODES SHOULD BE ADHERED TO FOR INSTALLATION LOCATIONS, WASTE & SUPPLY REQUIREMENTS OTHER THAN SHOWN.

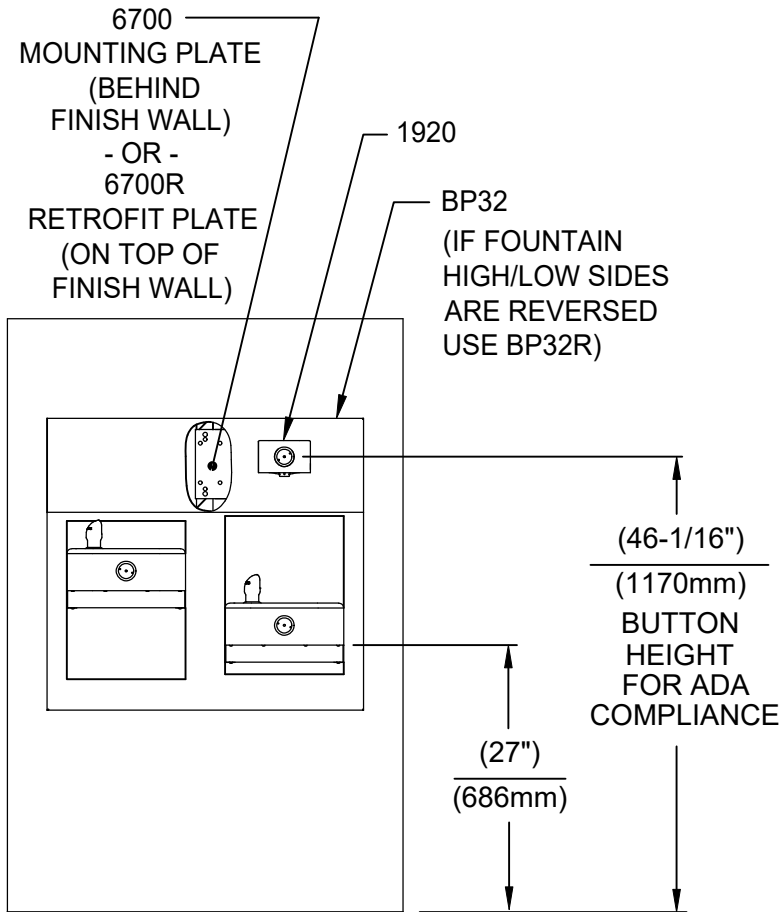


3/8" O.D. SUPPLY TUBING AND 3/8" O.D. PUSH-IN TEE SUPPLIED. (CONNECT TO FOUNTAIN SUPPLY LINE)

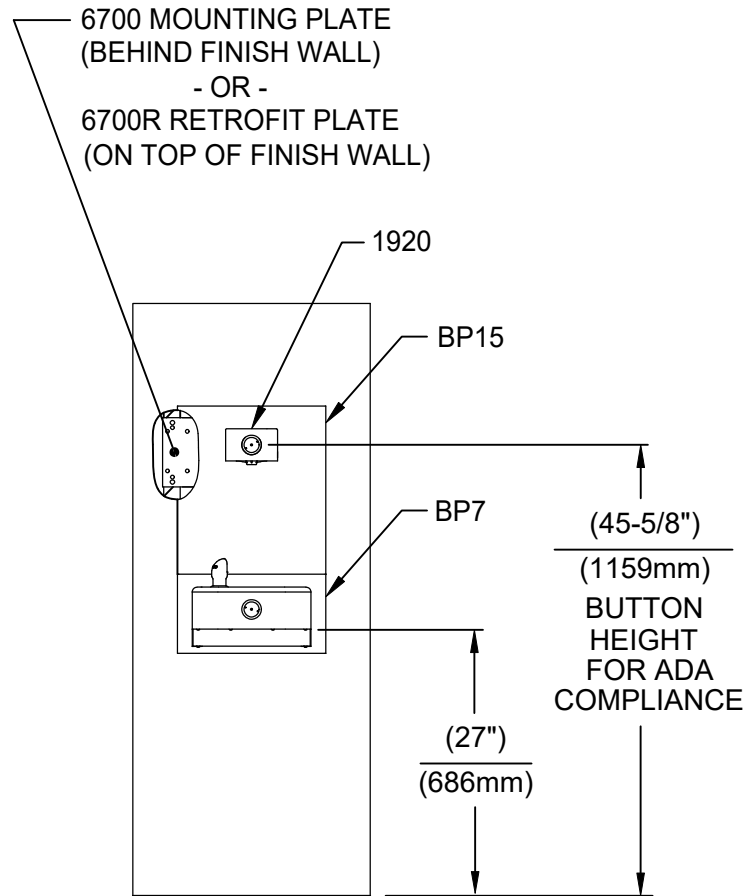


1455 KLEPPE LANE
SPARKS, NEVADA 89431
(775) 359-4712 FAX (775) 359-7424
E-MAIL: HAWS@HAWS.CO.COM
WEBSITE: WWW.HAWS.CO.COM

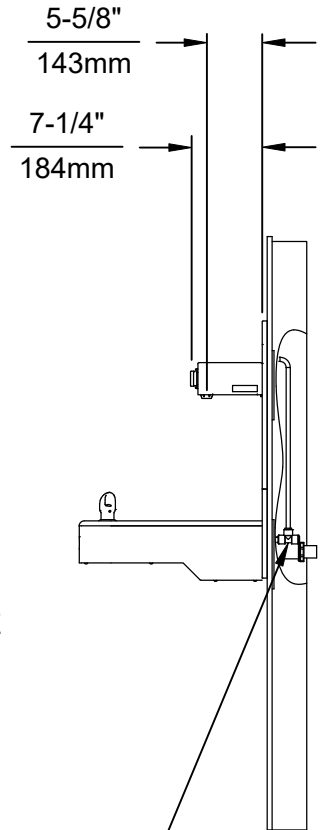
ECN NO. 5081	REVISED PER BY: JG	MODEL(S)	PART NUMBER
DRAWN: MJ	DATE: 01/30/17	1920/1920HPS/1920W	0510000490.D
APPROVED: RH	DATE: 11/28/24	SCALE: N/A	REVISION
		DRAWING TYPE: INSTALLATION	13
		SIZE: A	SHEET 4 OF 9



INSTALLATION ABOVE HAWS 1117L & H1117.8 SERIES

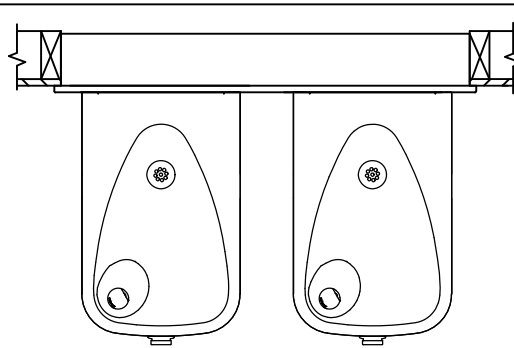


**INSTALLATION ABOVE HAWS 1107L & H1107.8 SERIES
SEE SHEET 8 FOR INSTALLATION AT CHILD HEIGHT**



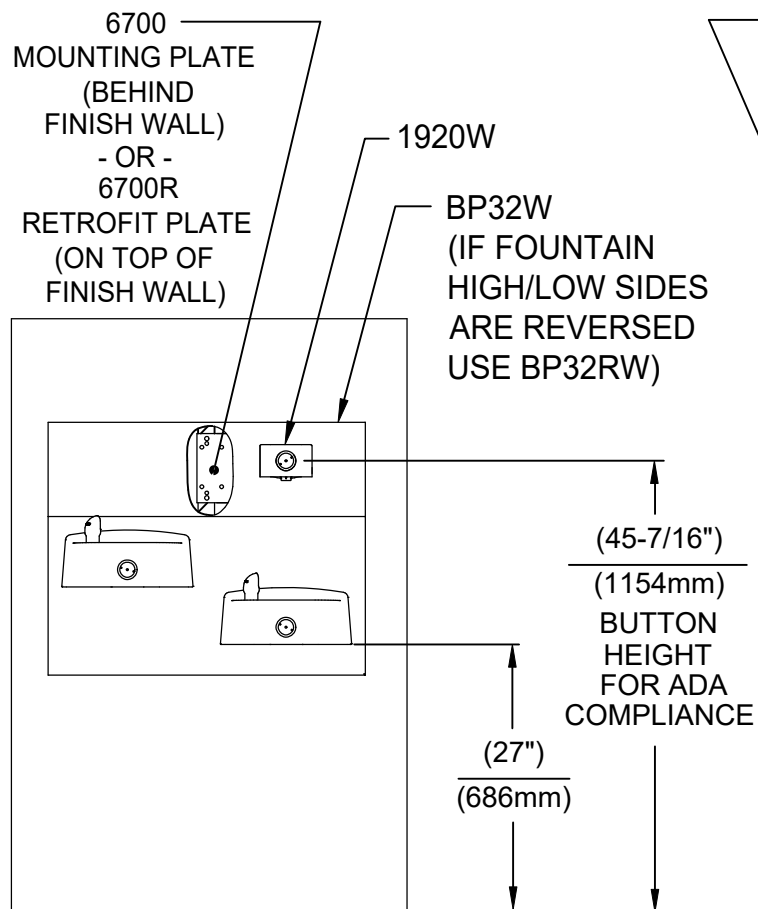
* IF YOUR FOUNTAIN IS THIS STYLE USE THESE DIMENSIONS

1. SEE SEPARATE INSTALLATION DRAWINGS FOR MOUNTING PLATES AND BACK PANELS (SHOWN FOR REFERENCE - NOT SUPPLIED).
2. WHEN INSTALLING THIS UNIT, LOCAL, STATE OR FEDERAL CODES SHOULD BE ADHERED TO FOR INSTALLATION LOCATIONS, WASTE & SUPPLY REQUIREMENTS OTHER THAN SHOWN.

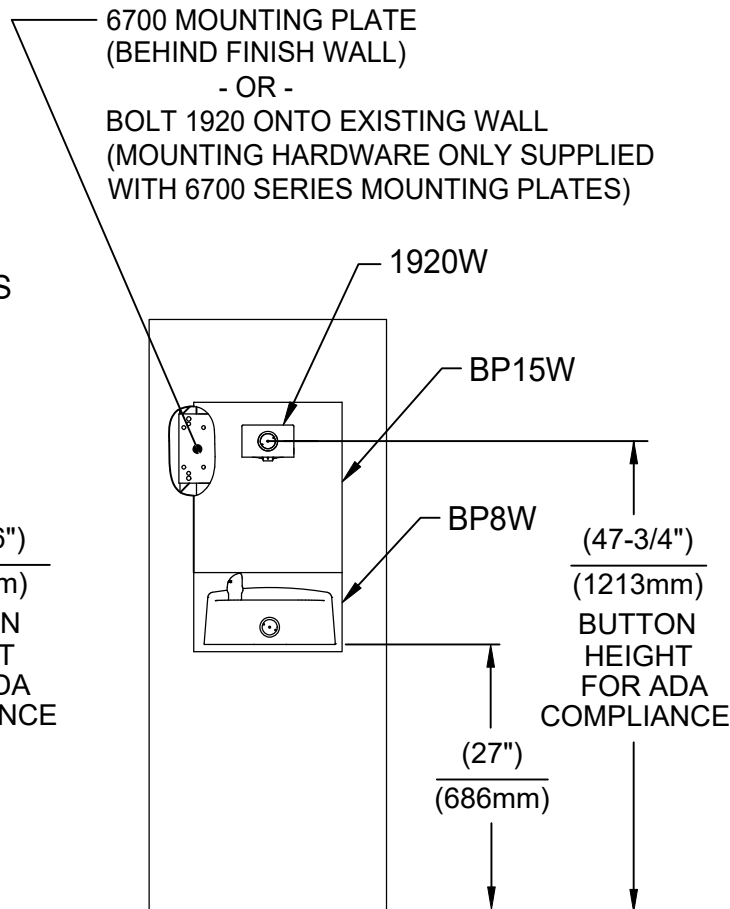


1455 KLEPPE LANE
SPARKS, NEVADA 89431
(775) 359-4712 FAX (775) 359-7424
E-MAIL: HAWS@HAWS.CO.COM
WEBSITE: WWW.HAWS.CO.COM

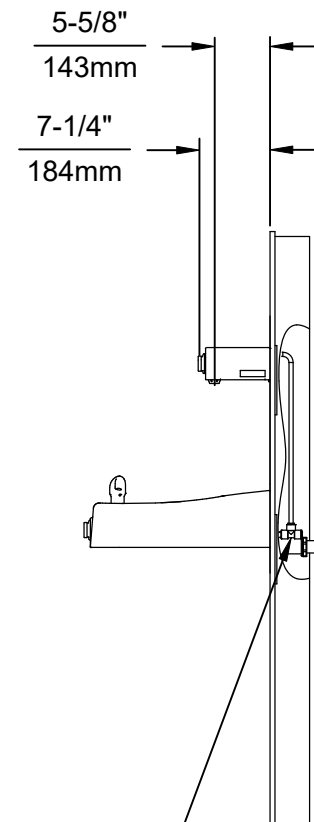
ECN NO. 5081	REVISED PER ECN: 6131	BY: JG	MODEL(S)	PART NUMBER
DRAWN: MJ	DATE: 01/30/17	CHKD: JG	1920/1920HPS/1920W	0510000490.D
APPROVED: RH	DATE: 11/28/24	SCALE: N/A	DRAWING TYPE: INSTALLATION	REVISION 13
			SIZE: A	SHEET 5 OF 9



INSTALLATION ABOVE HAWS 1501



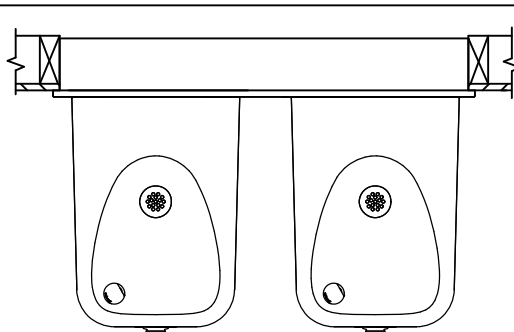
**INSTALLATION ABOVE HAWS 1311
SEE SHEET 8 FOR INSTALLATION AT CHILD HEIGHT**




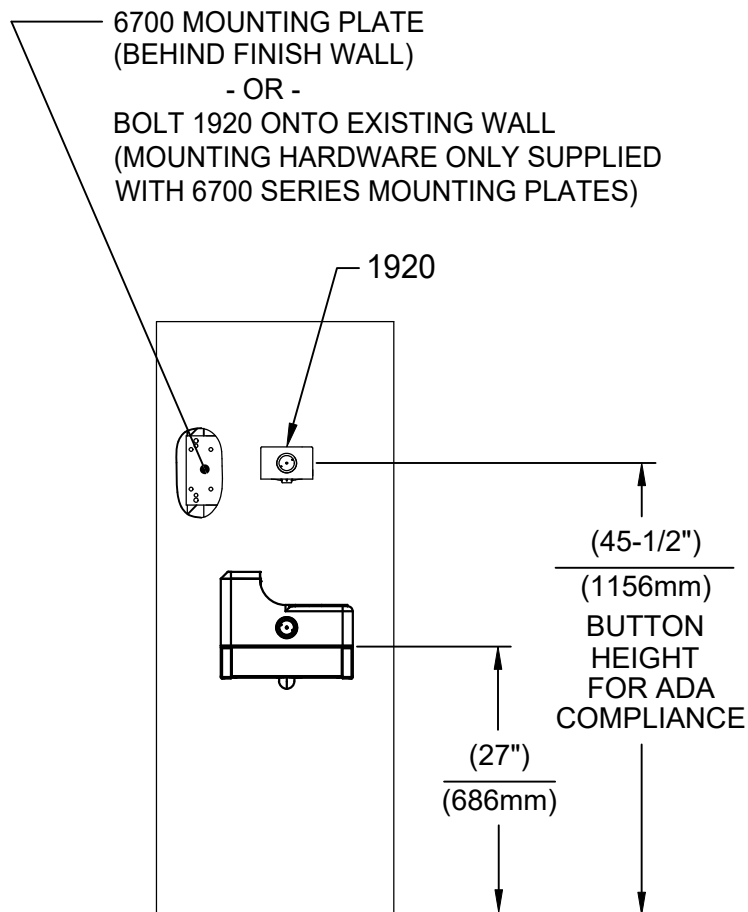
3/8" O.D. SUPPLY TUBING AND 3/8" O.D. PUSH-IN TEE SUPPLIED. (CONNECT TO FOUNTAIN SUPPLY LINE)

* IF YOUR FOUNTAIN IS THIS STYLE USE THESE DIMENSIONS

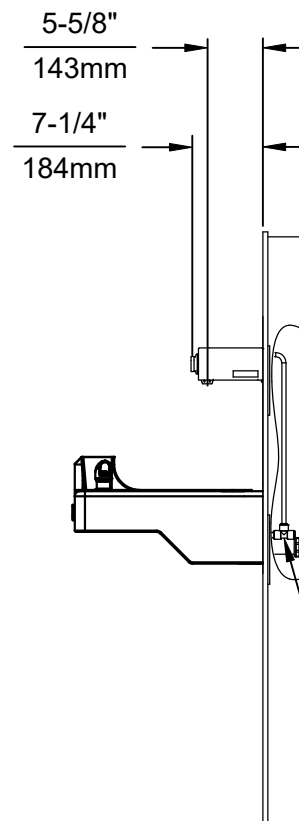
1. SEE SEPARATE INSTALLATION DRAWINGS FOR MOUNTING PLATES AND BACK PANELS (SHOWN FOR REFERENCE - NOT SUPPLIED).
2. WHEN INSTALLING THIS UNIT, LOCAL, STATE OR FEDERAL CODES SHOULD BE ADHERED TO FOR INSTALLATION LOCATIONS, WASTE & SUPPLY REQUIREMENTS OTHER THAN SHOWN.



				1455 KLEPPE LANE SPARKS, NEVADA 89431 (775) 359-4712 FAX (775) 359-7424 E-MAIL: HAWS@HAWS.CO.COM WEBSITE: WWW.HAWS.CO.COM			
ECN NO. 5081	REVISED PER ECN: 6131	BY: JG	DATE: 02/13/17	CHKD: JG	MODEL(S) 1920/1920HPS/1920W		PART NUMBER 0510000490.D
DRAWN: MJ	DATE: 02/13/17	CHKD: JG	DATE: 11/28/24	APPROVED: RH	SCALE: N/A DRAWING TYPE: INSTALLATION		REVISION 13
SIZE: A						SHEET 6 OF 9	

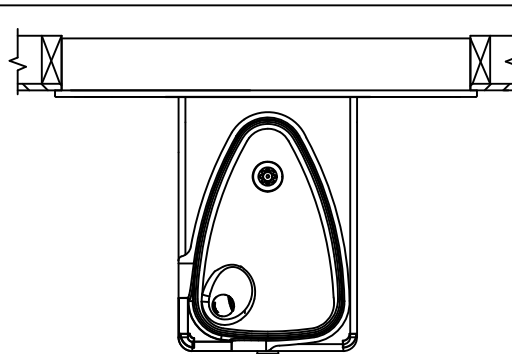


INSTALLATION ABOVE HAWS 1047



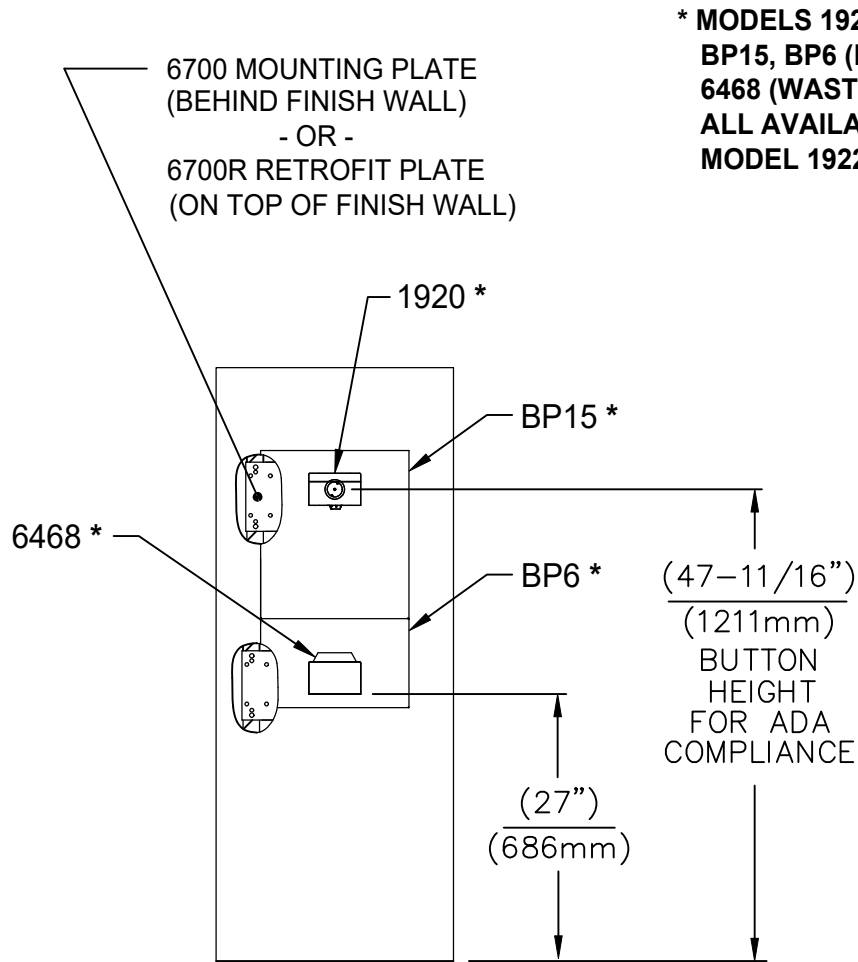
* IF YOUR FOUNTAIN IS THIS STYLE USE
THESE DIMENSIONS

1. SEE SEPARATE INSTALLATION DRAWINGS
FOR MOUNTING PLATES AND BACK PANELS
(SHOWN FOR REFERENCE - NOT SUPPLIED).
2. WHEN INSTALLING THIS UNIT, LOCAL,
STATE OR FEDERAL CODES SHOULD
BE ADHERED TO FOR INSTALLATION
LOCATIONS, WASTE & SUPPLY
REQUIREMENTS OTHER THAN SHOWN.

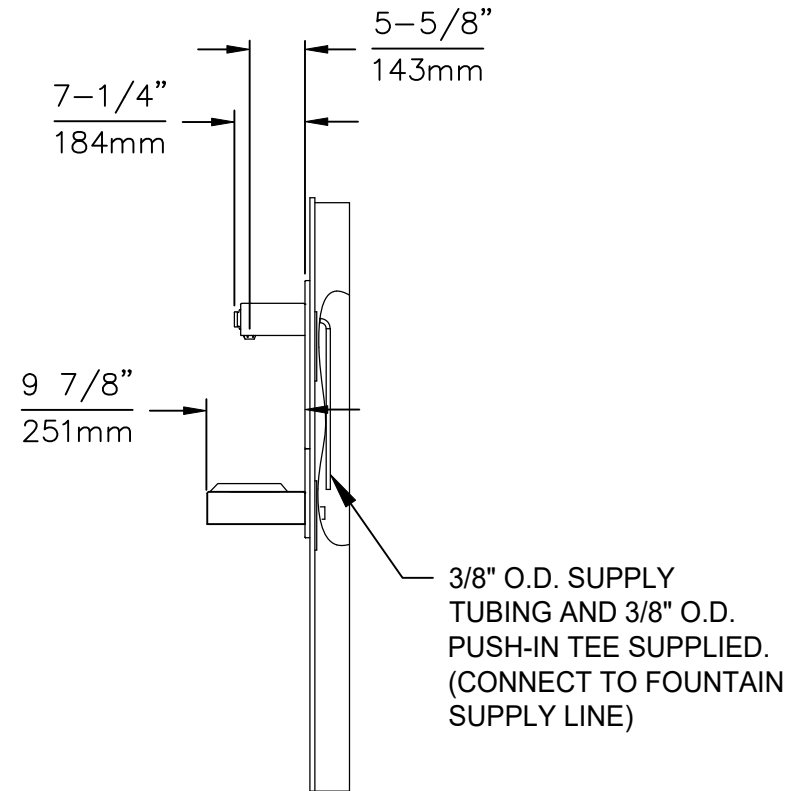


1455 KLEPPE LANE
SPARKS, NEVADA 89431
(775) 359-4712 FAX (775) 359-7424
E-MAIL: HAWS@HAWSO.COM
WEBSITE: WWW.HAWSO.COM

ECN NO. 5220	REVISED PER ECN: 6131	BY: JG	MODEL(S)	PART NUMBER
DRAWN: JP	DATE: 09/14/17	CHKD: JG	1920/1920HPS/1920W	0510000490.D
APPROVED: RH	DATE: 11/28/24	SCALE: N/A	DRAWING TYPE: INSTALLATION	REVISION 13
			SIZE: A	SHEET 7 OF 9




* **MODELS 1920 (BOTTLE FILLER),
BP15, BP6 (BACK PANELS) AND
6468 (WASTE DRIP TRAY) ARE
ALL AVAILABLE TOGETHER AS
MODEL 1922.**

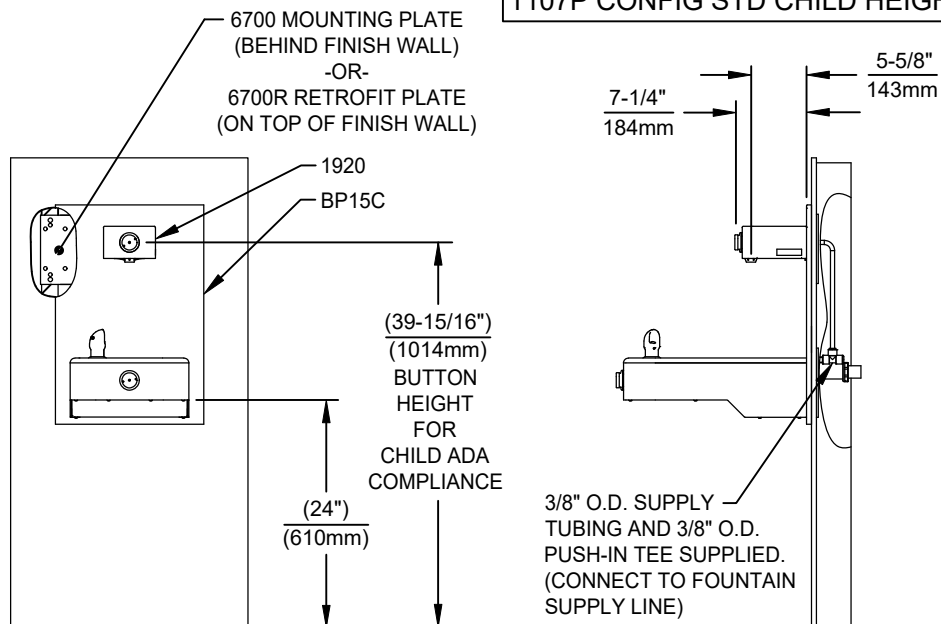


INSTALLATION ABOVE 6468

1. SEE SEPARATE INSTALLATION DRAWINGS FOR MOUNTING PLATE, WASTE DRIP TRAY AND BACK PANELS (SHOWN FOR REFERENCE - NOT SUPPLIED).
2. WHEN INSTALLING THIS UNIT, LOCAL, STATE OR FEDERAL CODES SHOULD BE ADHERED TO FOR INSTALLATION LOCATIONS, WASTE & SUPPLY REQUIREMENTS OTHER THAN SHOWN.

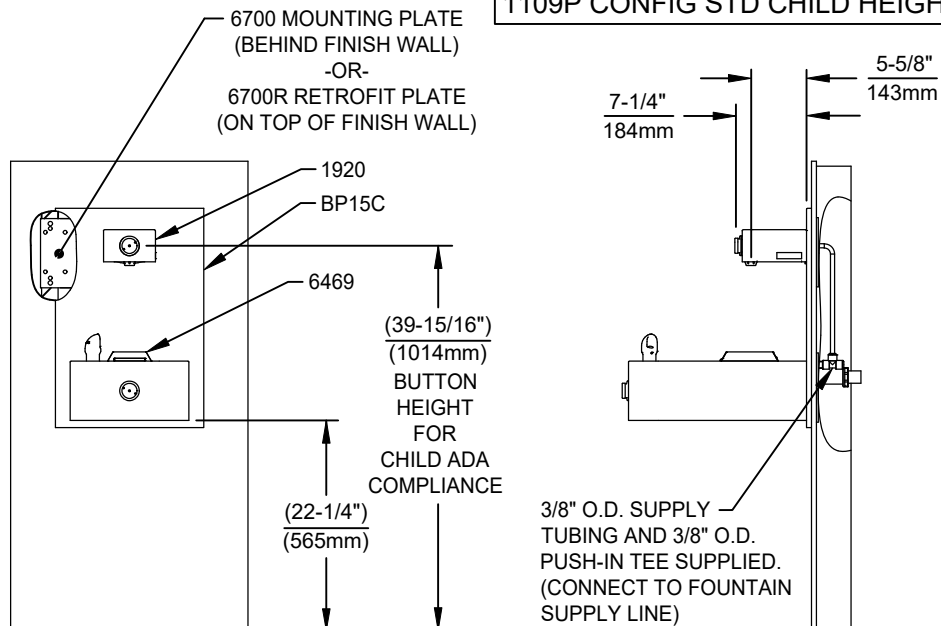
 Haws Since 1906				1455 KLEPPE LANE SPARKS, NEVADA 89431 (775) 359-4712 FAX (775) 359-7424 E-MAIL: HAWS@HAWS.CO.COM WEBSITE: WWW.HAWS.CO.COM			
ECN NO. 5607	REVISED PER ECN: 6131	BY: JG	DATE: 10/27/20	CHKD: JG	MODEL(S) 1920/1920HPS/1920W		PART NUMBER 0510000490.D
DRAWN: DP	DATE: 10/27/20	CHKD: JG	APPROVED: RH		DATE: 11/28/24	SCALE: N/A	DRAWING TYPE: INSTALLATION
SIZE: A				SHEET 8 OF 9			

1107P CONFIG STD CHILD HEIGHT



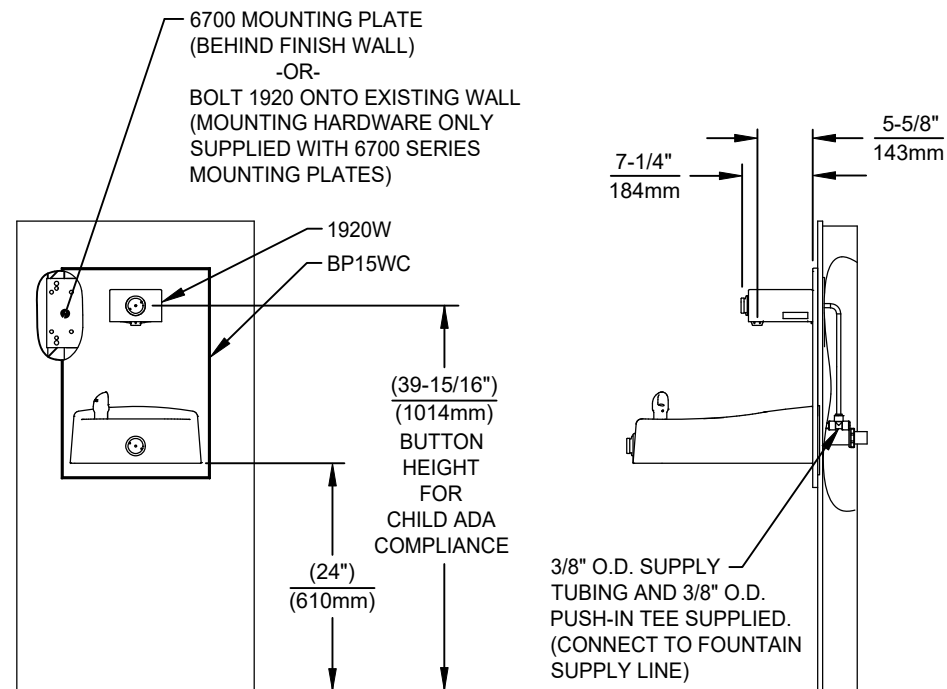
INSTALLATION FOR 1107P CONFIG STD CHILD HEIGHT

1109P CONFIG STD CHILD HEIGHT



INSTALLATION FOR 1109P CONFIG STD CHILD HEIGHT

MUST USE PARALLEL APPROACH WITH THIS BOWL COMBINATION



INSTALLATION FOR 1311P CONFIG STD CHILD HEIGHT

NOTES:

- HEIGHT DIMENSIONS SHOWN ARE FOR CHILD ADA APPLICATIONS:
- BOTTLE FILLER HEIGHT AT 40" MAX.
- DRINKING FOUNTAIN BUBBLER HEIGHT AT 30" MAX.
(SEE SHEETS 3, 4 & 5 FOR ADULT ADA HEIGHT DIMENSIONS)
- SEE SEPARATE 6700 DRAWINGS FOR MOUNTING PLATES AND BACK PANELS (SHOWN FOR REFERENCE - SOLD SEPERATELY OR PART OF A BUNDLED PRODUCT).
- WHEN INSTALLING THIS UNIT, LOCAL, STATE OR FEDERAL CODES SHOULD BE ADHERED TO FOR INSTALLATION LOCATIONS, WASTE & SUPPLY REQUIREMENTS OTHER THAN SHOWN.



1455 KLEPPE LANE
SPARKS, NEVADA 89431
(775) 359-4712 FAX (775) 359-7424
E-MAIL: HAWS@HAWS.CO.COM
WEBSITE: WWW.HAWS.CO.COM

ECN NO. 5607	REVISED PER BY: JG	MODEL(S)	1920/1920HPS/1920W	PART NUMBER 0510000490.D
DRAWN: FV	DATE: 01/28/24	CHKD: JG		REVISION 13
APPROVED: RH	DATE: 11/28/24	SCALE: N/A	DRAWING TYPE: INSTALLATION	SHEET 9 OF 9