



# Haws®

# model 8760

## ePOD™ Skid-Mounted Emergency Tempered Shower and Eye/Face Wash System

### FEATURES & BENEFITS

#### STANDARDIZED PLATFORM

Offering a standardized line of water tempering solutions providing shorter lead times, advanced compliance, cost efficiencies, and customizable configuration options.

#### VISUAL PLACEMENT

High visibility safety green powder coating and optional internal and/or external booth illumination package announces to all in the immediate area there is safety equipment nearby.

#### ALARM SYSTEM

Available audible and visible alarms controlled by a flow switch for immediate attention to an emergency.

#### BLENDING SYSTEM

Safe, fully engineered thermostatic mixing valve for mixing large volumes of hot and cold water guarded with anti-scald protection and full flow cold water bypass to provide tempered water in adverse situations.

#### TANK SYSTEM OPTIONS

Tanks available: 119 Gal non-ASME (450 L), 120 Gal (454 L) ASME, or 200 Gal (757 L) ASME that will store enough hot water to provide a single 15 minute shower and eye/face wash use. Also available in ASME is a 318 Gal (1203 L) or 400 Gal (1514 L) that stores enough hot water to provide two 15 minute shower and eye/face wash uses before tank recovery is required.

#### MONITORING

Advanced Programmable Monitoring Control System provides real-time digital display with alarm cycle history and fault history. Capabilities include automatic alarm silencing reset, customer control room synchronization, and more.

#### CONSTRUCTION

Galvanized pipe, bronze valves, and aluminum structural members provide superior defense in a highly corrosive environment, and bottom forklift slots for easy site placement.

#### ELECTRICAL SYSTEM OPTIONS

Haws provides systems at various voltage options, including 480V 3ph, 600V 3ph, 208V 1ph, 208V 3ph, 240V 1ph, and 240V 3ph. Electrical area rating options include Ordinary Location and Hazardous Location up to CL1 DIV 2 B, C, D T3

#### AXION TECHNOLOGY

AXION® MSR eye/face wash head uses an inverted directional laminar flow to sweep contaminants away from the vulnerable nasal cavity, and hydrodynamic shower head design for even flow throughout the flow pattern.



### SPECIFICATIONS

Model 8760 ePOD™ shower and eye/face wash shall include an aluminum channel 5'x5' (1.5 x 1.5m) frame with a composite equipment platform, with safety green chemical and UV resistant polyester based powder coating. There is a 20 gpm (75.7 L) AXION showerhead, an eyewash that features the medically acclaimed AXION® MSR eye/face wash head assembly. This single shower and eye wash or multiple shower/eye wash tempering unit provides an operating temperature range of 35° to 120° F (1.67° to 48.9° C), supplied with 480V single phase tie in, and is designed to operate with a number of tempering and electrical options. The tempered water blending system will include an integral hot water supply, and will incorporate fail-safe features like anti-scald protection and full flow cold water bypass. The electrical system can be easily adapted to voltages upon request. Combination shower and eyewash is certified by CSA to meet the ANSI Z358.1 Standard for emergency Eyewash and Shower Equipment. For the electrical certification, the system is certified by accredited Certification Body.

### APPLICATIONS

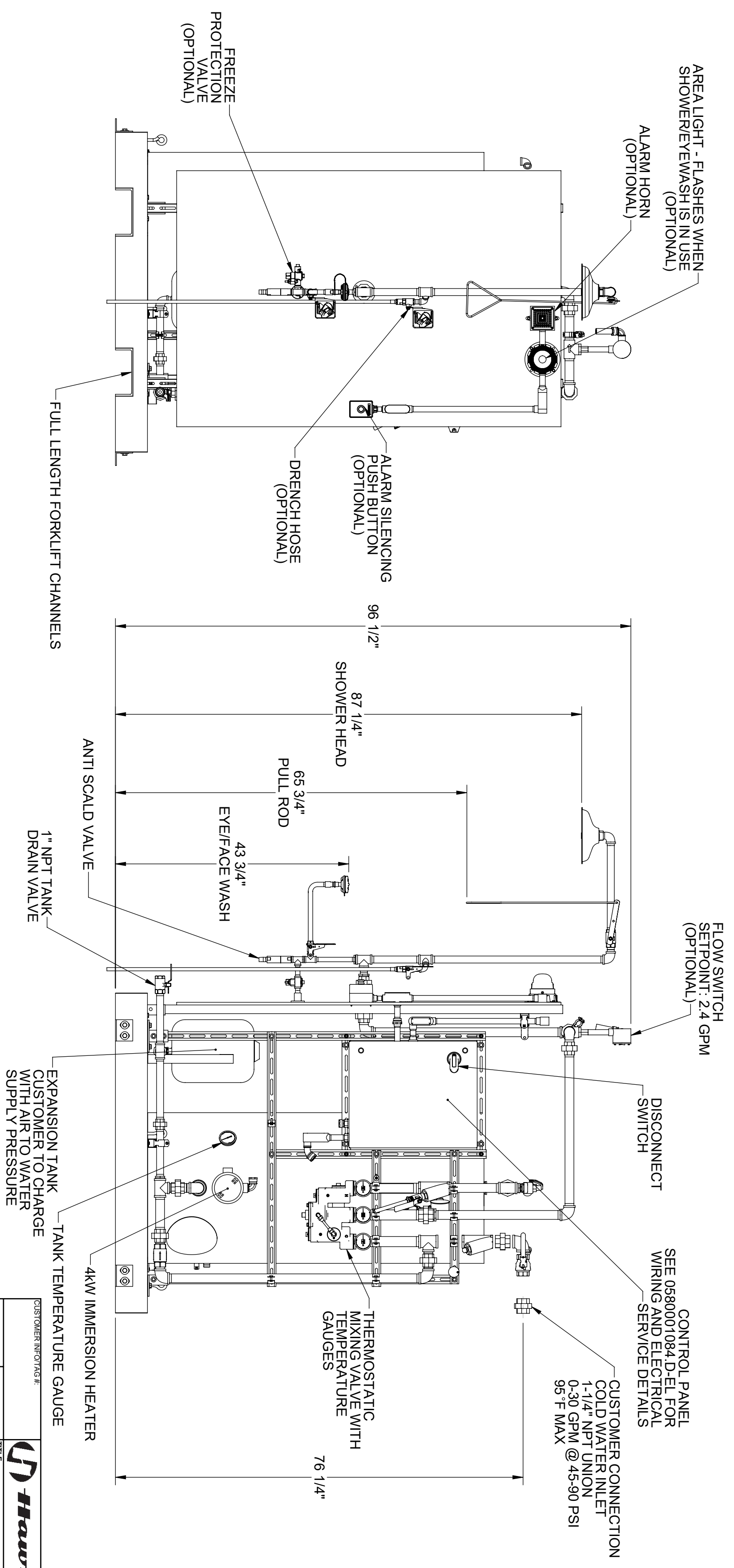
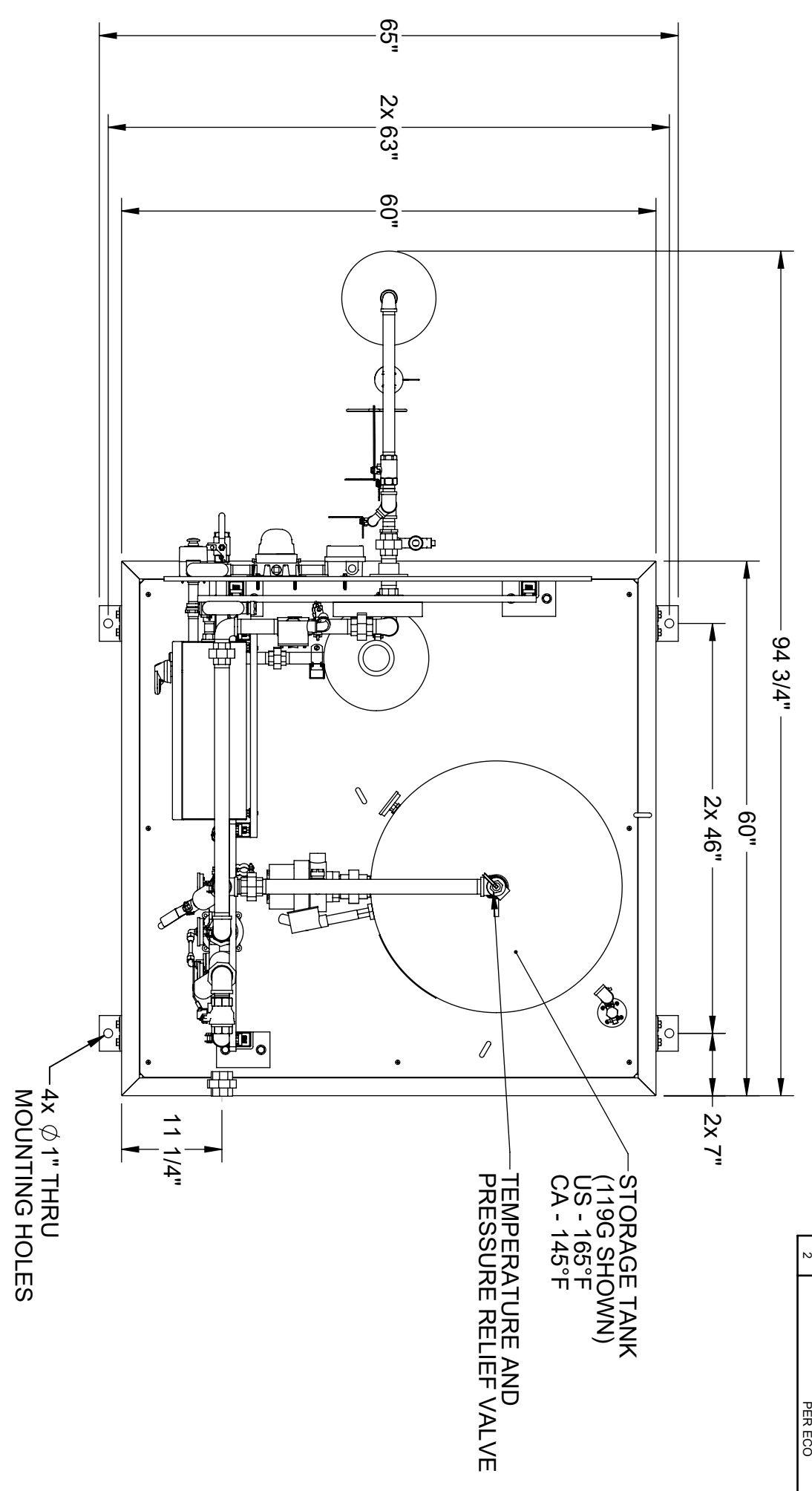
Perfect for indoor facilities that may encounter dangerous chemical hazards and need a complete decontamination station, and/or need a feeder to other remote booth substations, or other drench systems and/or eyewash stations.

For more information, visit [www.hawsc.com](http://www.hawsc.com) or call (888) 640-4297.



REVISIONS			
REV	DESCRIPTION	ECN	DATE
1	INITIAL RELEASE	5589	9/16/20
2	PER ECO	5624	11/19/2021

- NOTES:
1. DIMENSIONS IN INCHES
  2. ALL TOLERANCES:  $\pm 1/2"$
  3. ESTIMATED WEIGHT (119G TANK):  
DRY: 1200 LBS  
WET: 2200 LBS
  4. AREA CLASSIFICATION: ORDINARY  
AVAILABLE AMBIENT TEMPERATURE RANGES:  
32°F - 104°F, 32°F - 120°F
  5. RATINGS: CONFIGURABLE WITH TYPE 4/4X JUNCTION BOX FOR  
INDOOR LOCATION
  6. NOT ALL FEATURES ARE STANDARD
  - 7.



THE ATTACHED DESIGNS ARE CONSIDERED TRADE SECRETS AND POTENTIALLY PATENTABLE. IN ACCORDANCE WITH CONFIDENTIALITY AND NON-DISCLOSURE AGREEMENT, THESE DESIGNS IN ACTUAL OR CONCEPTUAL FORMS CANNOT BE DISCLOSED, REPRODUCED OR USED WITHOUT HAWS EXPRESS WRITTEN CONSENT.

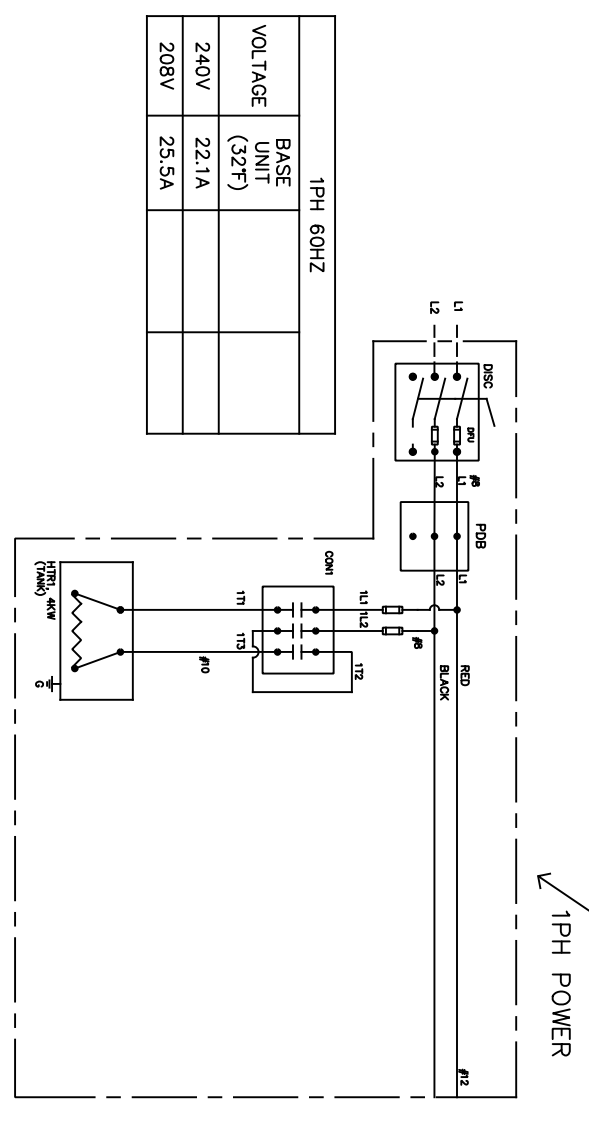
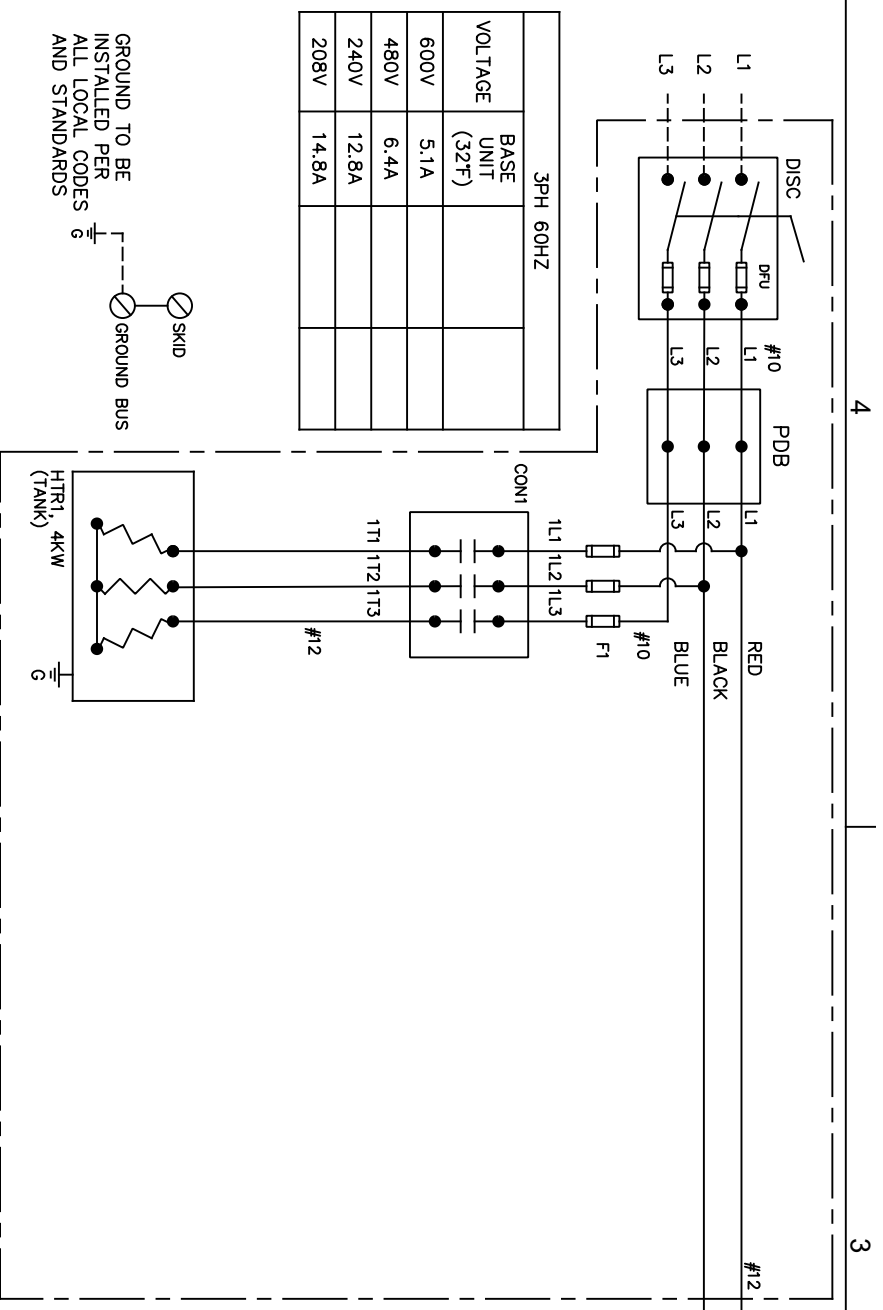
CUSTOMER INFO/TAGS#:		JOB NUMBER:	
DRAWN BY: IR		DRAWN DATE: 07/26/21	
CHECKED BY: AM		CHECKED DATE: 11/23/21	
APPROVED BY: IR		APPROVAL DATE: 11/30/21	
TITLE: INDOOR TEMPERED SHOWER AND EYE/FACE WASH SYSTEM		SCALE: 1" = 1'-0"	
NOTICE OF PROPRIETARY INFORMATION: THIS DRAWING IS THE SOLE PROPERTY OF HAWS CORPORATION. IT IS TO BE USED ONLY FOR THE PROJECT AND NOT TO BE REPRODUCED OR TRANSMITTED IN ANY FORM OR BY ANY MEANS, ELECTRONIC OR MECHANICAL, INCLUDING PHOTOCOPYING, RECORDING, OR BY ANY INFORMATION STORAGE AND RETRIEVAL SYSTEM, WITHOUT THE WRITTEN PERMISSION OF HAWS CORPORATION.		THIRD ANGLE PROJECTION	
1455 KLEPPE LANE SPARKS, NEVADA 89431		REV. 2	

REV	DESCRIPTION	ECN	DATE	BY
2	REWORK	5062	12/01/20	SR
1				

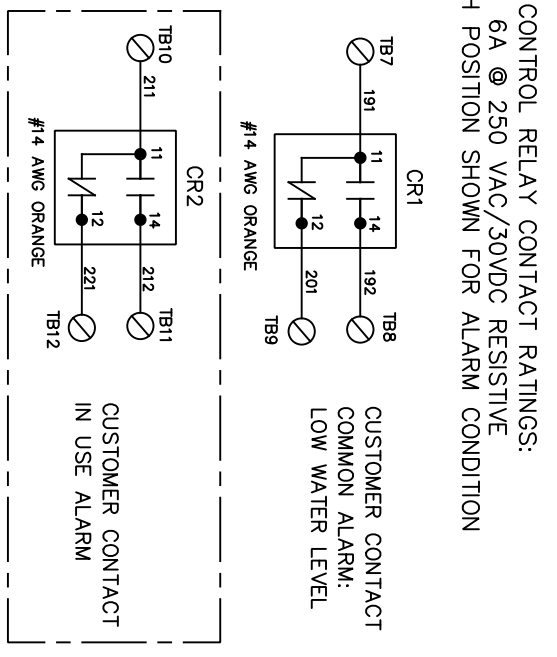
VOLTAGE	DFU	F1	PFU	CFU
208V 1PH	30A	2.5A	3A	2.8A
240V 1PH	30A	2.5A	2.8A	2.8A
208V 3PH	30A	1.5A	3A	2.8A
240V 3PH	30A	1.2A	2.8A	2.8A
480V 3PH	30A	6A	1.4A	2.8A
600V 3PH	30A	5A	1A	2.8A

FUSE TYPE	JKS	KIKR	KIDR	KIDR



DISCONNECT SIZE (AWG)	TORQUE VALUE (IN-LBS)	DRY CONTACTS CONDUCTOR SIZE (AWG)	TORQUE VALUE (IN-LBS)	PUSH-IN
18-8	13-18	14-20		



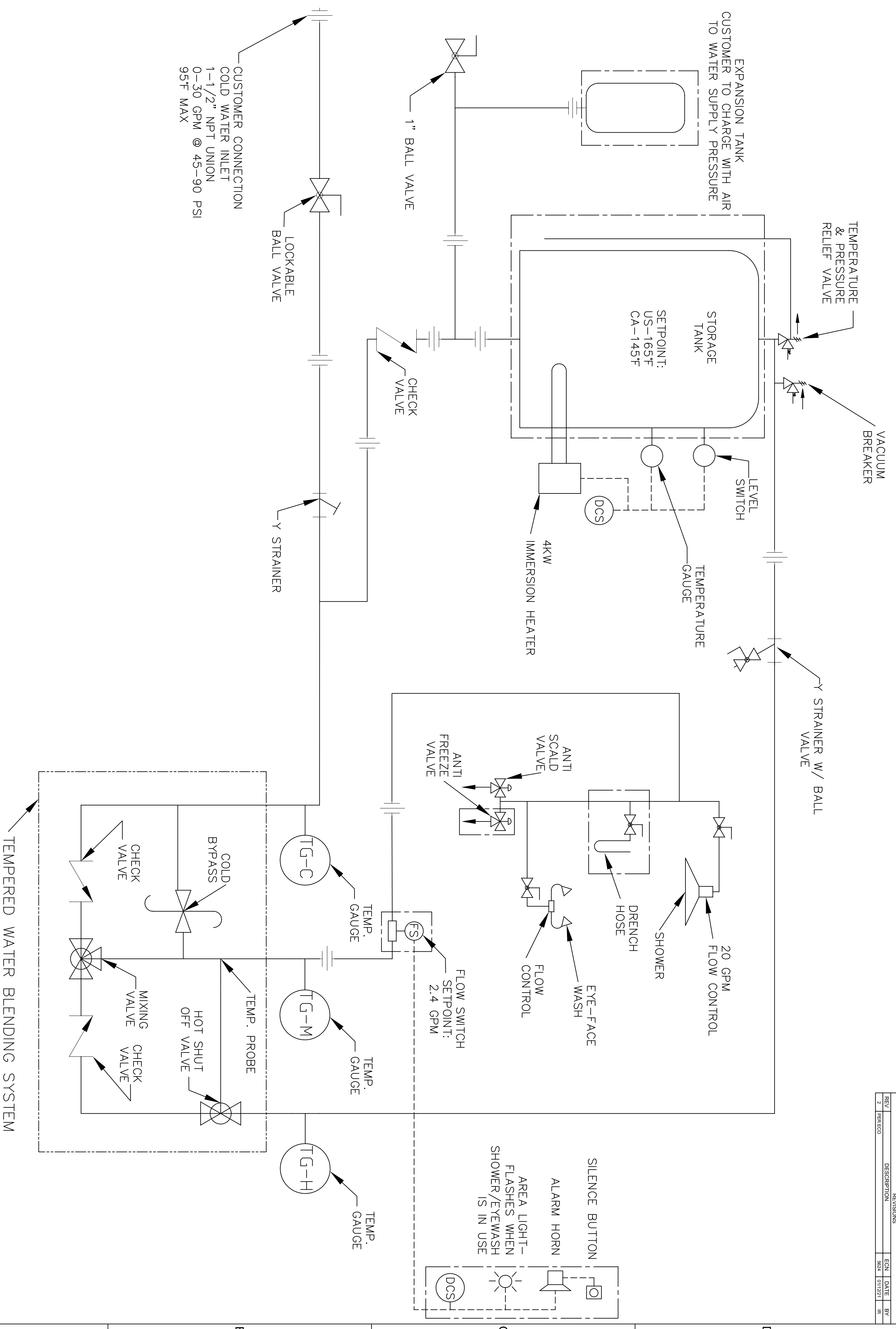
- NOTES:
- AREA CLASSIFICATION: ORDINARY
  - AVAILABLE AMBIENT TEMPERATURE RANGES:  
32°F - 104°F, 32°F - 120°F
  - RATINGS: CONFIGURABLE WITH TYPE 4/4X JUNCTION BOX FOR INDOOR LOCATION

THE ATTACHED DESIGNS ARE CONSIDERED TRADE SECRETS AND POTENTIALLY PATENTABLE. IN ACCORDANCE WITH CONFIDENTIALITY AND NON-DISCLOSURE AGREEMENT, THESE DESIGNS IN ACTUAL OR CONCEPTUAL FORMS CANNOT BE DISCLOSED, REPRODUCED OR USED WITHOUT HAWS' EXPRESS WRITTEN CONSENT.

APPROVALS	DATE
DESIGN	
CHECKED	09/18/20
APPROVED	11/23/21
DRAWING NO.	115921
REVISIONS	
1	C

REV	DESCRIPTION	DATE	BY
2	PER ECO	01/12/21	IR

REV	DESCRIPTION	DATE	BY
2	PER ECO	01/12/21	IR



CUSTOMER CONNECTION  
COLD WATER INLET  
1-1/2" NPT UNION  
0-30 GPM @ 45-90 PSI  
95°F MAX

SETPOINT:  
US-165°F  
CA-145°F

TEMP. PROBE

FLOW SWITCH  
SETPOINT:  
2.4 GPM

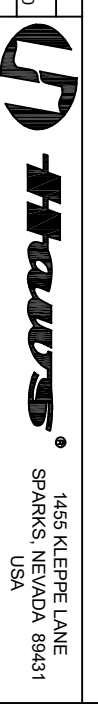
TEMPERED WATER BLENDING SYSTEM

OPTIONAL FEATURE THAT CAN BE  
CONFIGURED WHEN PURCHASED

THE ATTACHED DESIGNS ARE CONSIDERED TRADE SECRETS  
AND POTENTIALLY PATENTABLE. IN ACCORDANCE WITH  
CONFIDENTIALITY AND NON-DISCLOSURE AGREEMENT,  
THESE DESIGNS IN ACTUAL OR CONCEPTUAL FORMS  
CANNOT BE DISCLOSED, REPRODUCED OR USED WITHOUT  
HAWES' EXPRESS WRITTEN CONSENT.

- NOTES:
1. AREA CLASSIFICATION: ORDINARY
  2. AVAILABLE AMBIENT TEMPERATURE RANGES:  
32°F - 104°F, 32°F - 120°F
  3. RATINGS: CONFIGURABLE WITH TYPE 4/4X JUNCTION BOX  
FOR INDOOR LOCATION

APPROVALS	DATE
DRAWN IR	08/18/20
CHECKED AM	11/23/21
APPROVED	



1455 KLEPPLE LANE  
SPARKS, NEVADA, 89431  
USA

APPROVALS	DATE
DRAWN IR	08/18/20
CHECKED AM	11/23/21
APPROVED	

8760 - SKID-MOUNTED EMERGENCY TEMPERED  
SHOWER AND EYE/FACE WASH SYSTEM

APPROVALS	DATE
DRAWN IR	08/18/20
CHECKED AM	11/23/21
APPROVED	

NOTICE OF PROPRIETARY INFORMATION  
THIS DOCUMENT IS THE PROPERTY OF HAWES CORPORATION AND THE DATA  
DISCLOSED HEREIN OR HEREWITH IS NOT TO BE REPRODUCED,  
USED, OR DISCLOSED TO ANY OTHER PARTY WITHOUT THE  
WRITTEN PERMISSION OF HAWES CORPORATION.

APPROVALS	DATE
DRAWN IR	08/18/20
CHECKED AM	11/23/21
APPROVED	

THIRD ANGLE PROJECTION  
SCALE SIZE PART NUMBER 0560001084.D-PID

APPROVALS	DATE
DRAWN IR	08/18/20
CHECKED AM	11/23/21
APPROVED	

SH 1  
REV 2