

**Haws®**

ePOD™ Indoor/Outdoor Heated Shower and Eye/Face Wash Booth

model **8730**

FEATURES & BENEFITS

STANDARDIZED PLATFORM

Offering a standardized line of water tempering solutions providing shorter lead times, advanced compliance, cost efficiencies, and customizable configuration options.

VISUAL PLACEMENT

High visibility safety green powder coating, internal illumination and an optional external booth illumination package announces to all in the immediate area there is safety equipment nearby.

CONSTRUCTION

Galvanized pipe, bronze valves, and aluminum structural members provide superior defense in a highly corrosive environment, and bottom forklift slots for easy site placement.

VALVES

Eye/face wash valve is designed to make the flushing of contaminants occur with the simple push of a stainless steel flag. Shower ball valve is designed to make the flushing of fluid occur with the pull of a triangular lever. Both are made of bronze.

AXION TECHNOLOGY

AXION® MSR eye/face wash head uses an inverted directional laminar flow to sweep contaminants away from the vulnerable nasal cavity, and hydrodynamic shower head design for even flow throughout the flow pattern.

EXTREME WEATHER OPTIONS

Select from three Environmental packages including a Northern Package with protection to -20° F, an Arctic Package with protection to -50° F, and a Desert Package for extreme heat to +120° F

OPTIONS

Optional equipment to accommodate virtually any specific need includes:

- Stainless steel valves and/or piping
- Tempering packages including instantaneous electrical or an industry exclusive steam heater
- Alarm packages
- Electrical packages including 208V, 240V, 480V and 600V options
- Freeze proof shower and eyewash
- Safety first aid kit and stretcher

For more information, visit www.hawscos.com or call (888) 640-4297.



SPECIFICATIONS

Model 8730 ePOD™ enclosed shower and eye/face wash shall include a completely enclosed 5' x 5' (1.52 x 1.52m) all-weather, aluminum structure covered with safety green chemical and UV resistant polyester based powder coating which provides an optional operating temperature range of -50° to 120° F (-45.5° to 48.9° C). It shall include spring-loaded, self-closing shower doors, is trimmed with large directional arrows, universal shower/eyewash sign, fiberglass floor grate, and 3" IPS inside caulk drain. There is a 20 gpm (75.7 L) AXION® hydrodynamic showerhead, an eye/face wash that features the medically acclaimed AXION® MSR eye/face wash head assembly. Chrome-plated brass stay-open shower and eye/face ball valves equipped with stainless steel ball and stem, and can be protected by scald and freeze bleed valves. The internal booth temperature can be maintained by an optional space heater. The available alarm system is proximity switch activated, and provides local audible and visible alarms. Combination shower and eyewash is certified by CSA to meet the ANSI Z358.1 Standard for Emergency Eyewash and Shower Equipment. For the electrical certification, the system is certified by accredited Certification Body.

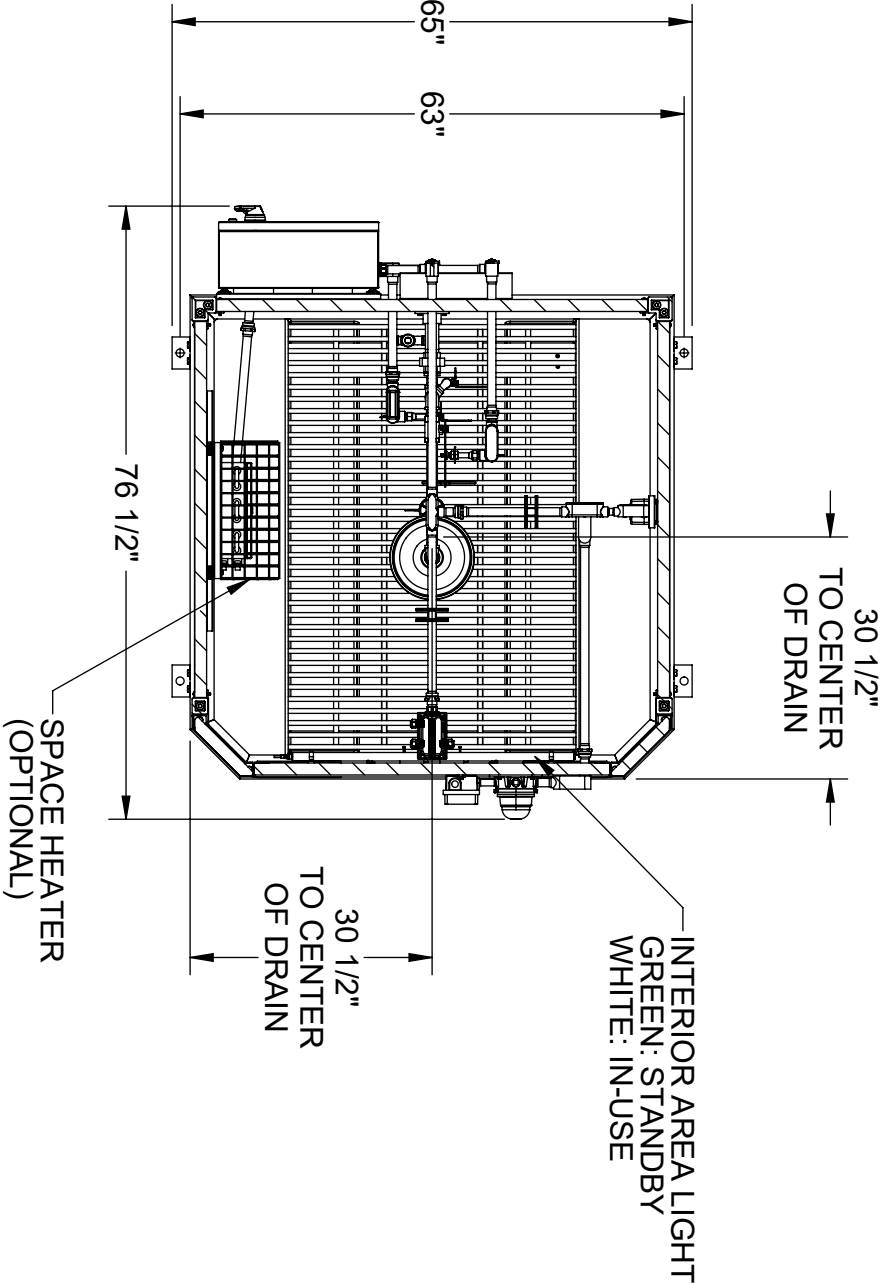
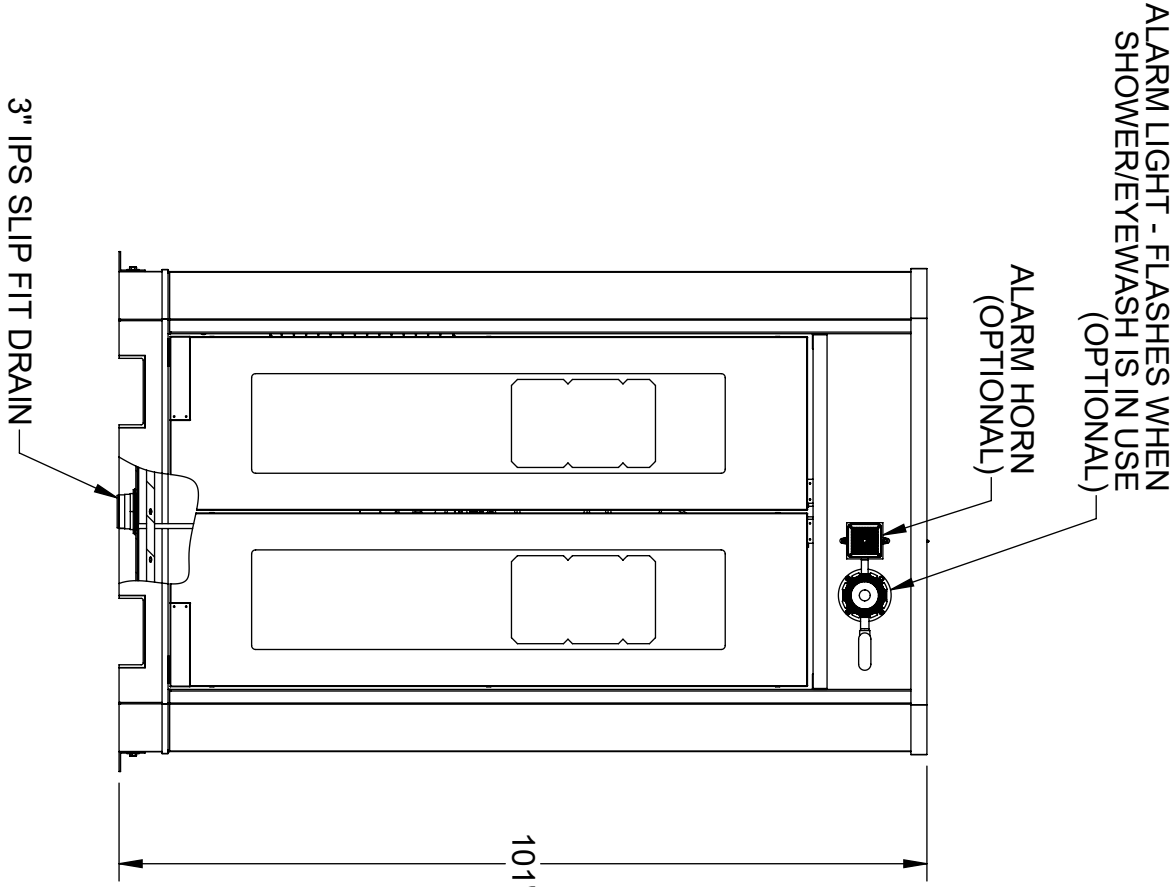
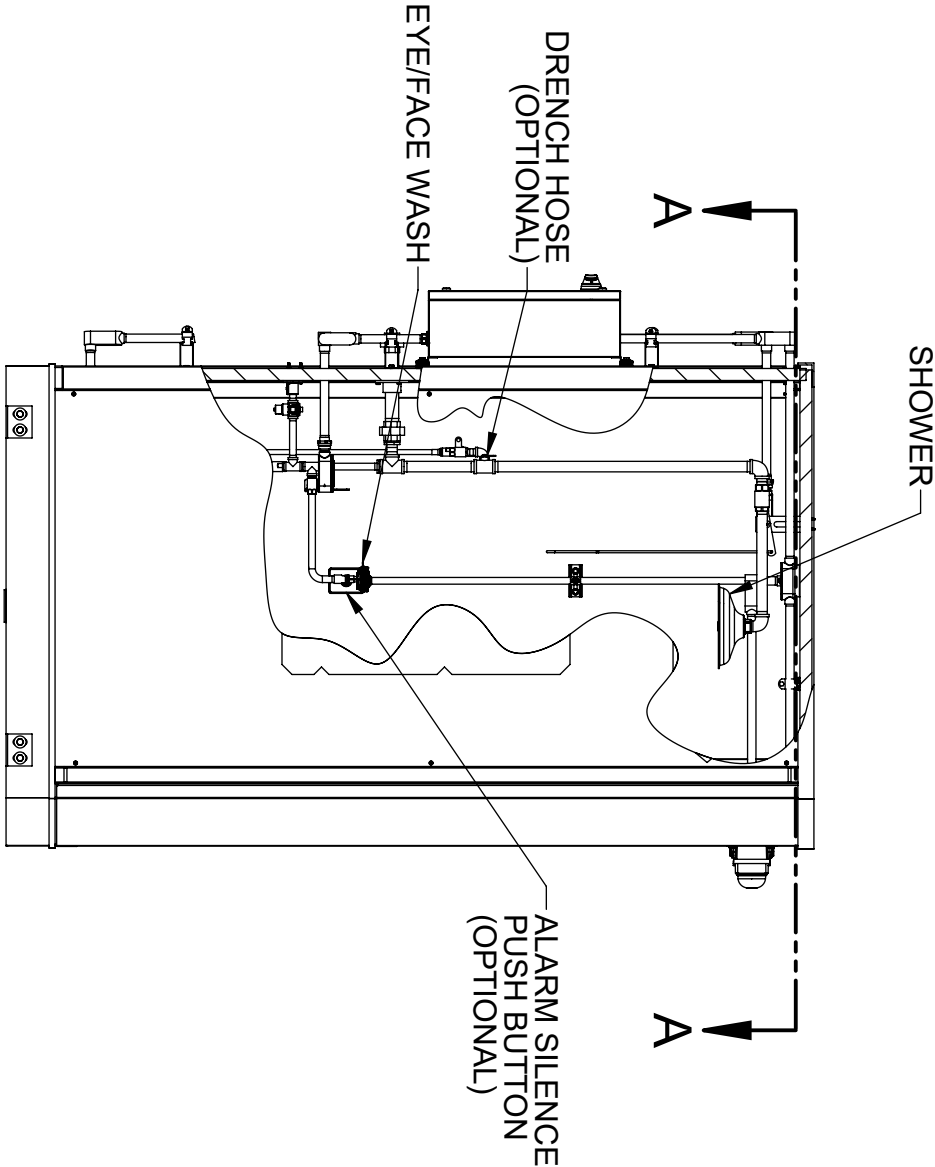
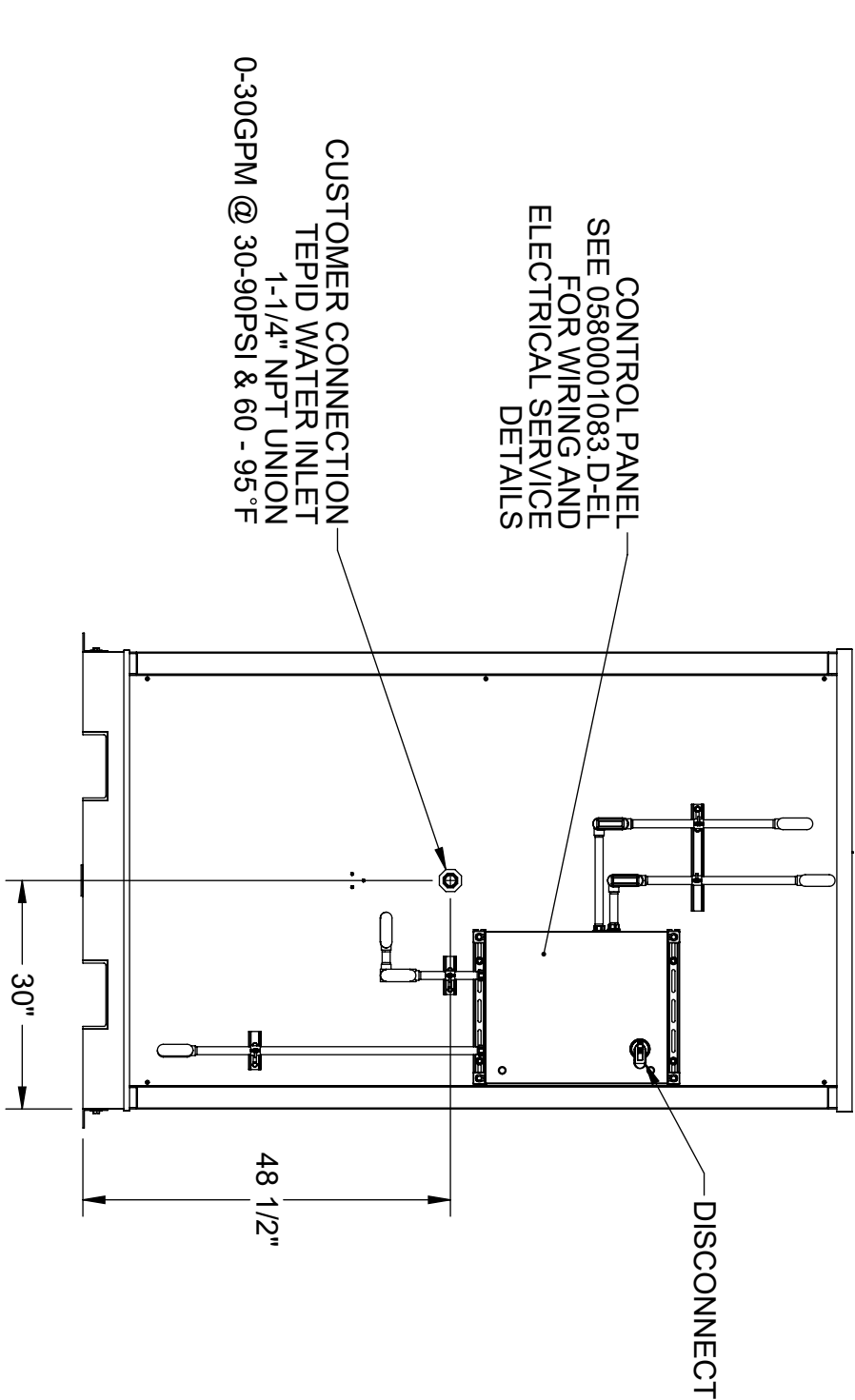
APPLICATIONS

Perfect for Petro-chemical, bio-diesel, and ethanol processing facilities, and other remote outdoor locations where drench showers with very cold water would pose a health hazard to employees and a liability to employers, or in shower areas exposed to cold air and wind where showering with very cold water could discourage proper flushing time.



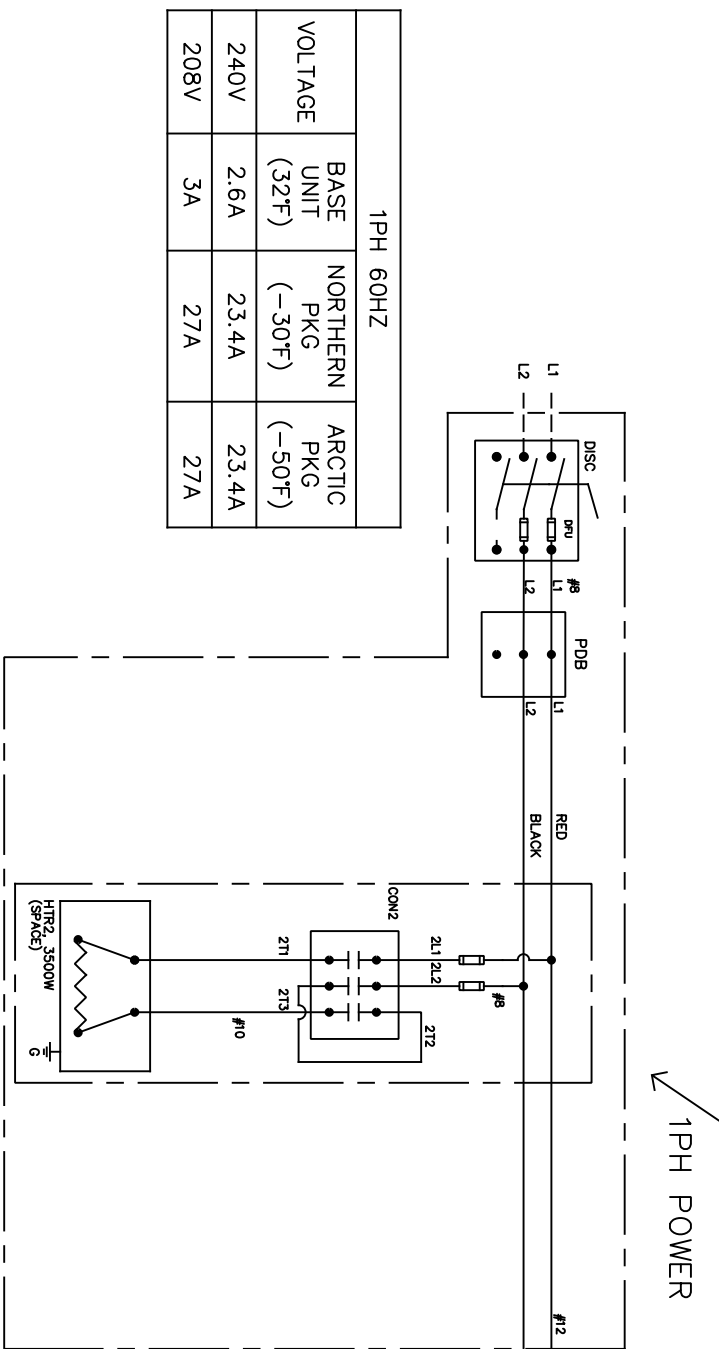
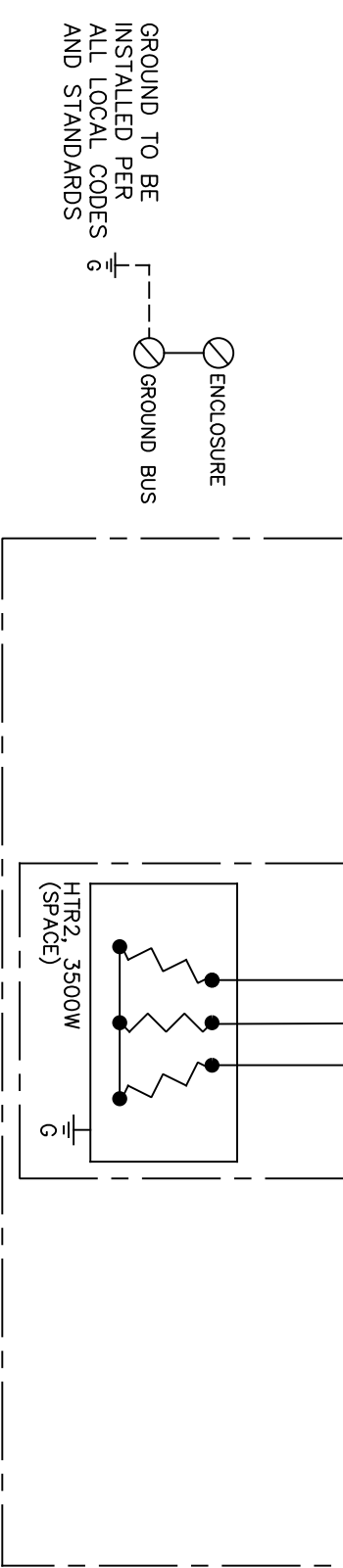
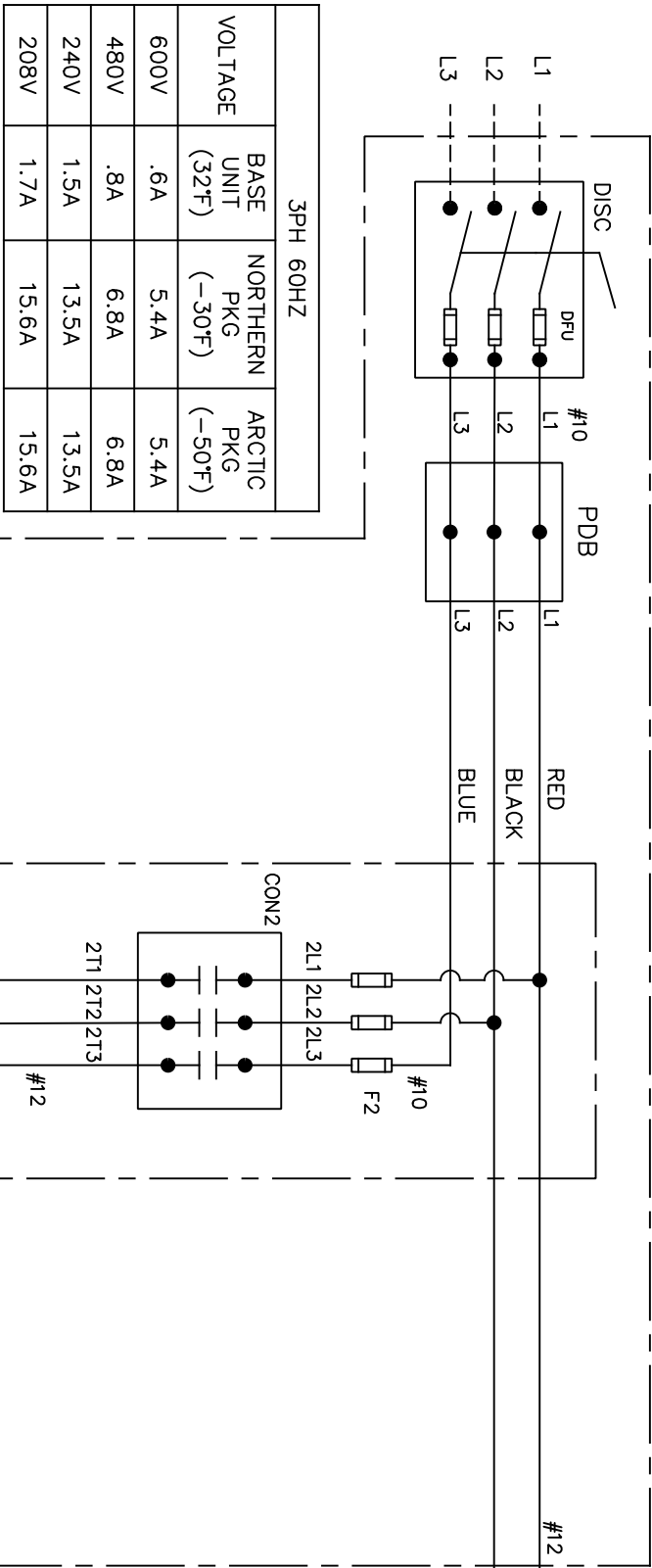
REVISIONS			
REV	DESCRIPTION	ECN	DATE
1	INITIAL RELEASE	5599	9/17/2020
2	PER ECO	5624	11/19/2021

- NOTES:
- DIMENSIONS IN INCHES
 - ALL TOLERANCES: $\pm 1/2"$
 - ESTIMATED WEIGHT:
DRY: 1200 LBS
WET: 1220 LBS
 - AREA CLASSIFICATION: ORDINARY
 - AVAILABLE AMBIENT TEMPERATURE RANGES:
-50°F - 104°F, -30°F - 104°F, 32°F - 104°F, 32°F - 120°F
 - RATINGS: CONFIGURABLE WITH TYPE 4/4X JUNCTION BOX FOR INDOOR OR OUTDOOR LOCATION
 - 304SS JUNCTION BOX CANNOT BE USED WITH ARCTIC PACKAGE



SECTION A-A

CUSTOMER INFO/TAG #:		TITLE	
JOB NUMBER:		OUTDOOR HEATED SHOWER AND EYE/FACE WASH BOOTH	
DRAWN BY:		NOTICE OF PROPRIETARY INFORMATION	
DRAWN DATE:		THIRD ANGLE PROJECTION	
CHECKED BY:		INFORMATION CONTAINED HEREIN IS THE SOLE PROPERTY OF HAWES CORPORATION. IT IS NOT TO BE REPRODUCED OR TRANSMITTED IN ANY FORM OR BY ANY MEANS, ELECTRONIC OR MECHANICAL, INCLUDING PHOTOCOPYING, RECORDING, OR BY ANY INFORMATION STORAGE AND RETRIEVAL SYSTEM. WITHOUT THE WRITTEN PERMISSION OF HAWES CORPORATION.	
CHECKED DATE:		SCALE SIZE: 1/2" = 1'	
APPROVED BY:		PART NO. 0580001083.D-GA	
APPROVAL DATE:		REV. 2	

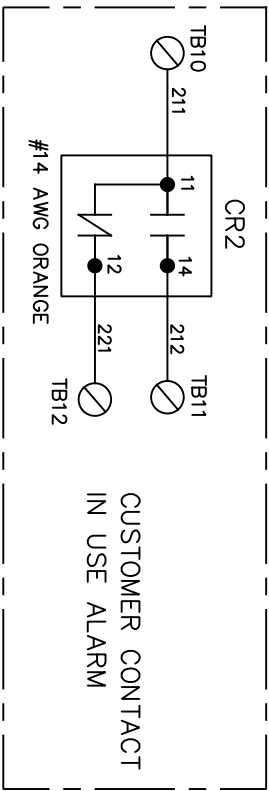


CONDUCTOR TERMINAL RATING			
DISCONNECT	CONDUCTOR SIZE (AWG)	TORQUE VALUE (IN-LBS)	TORQUE VALUE (AWG)
30A	18-8	13-18	14-20

COMPONENT DESIGNATION

- AH – ALARM HORN
- CFU – TRANSFORMER SECONDARY FUSE
- CON2 – CONTACTOR 3 POLE, SPACE HEATER
- CR2 – CONTROL RELAY FOR ALARM NOTIFICATION
- CR3 – CONTROL RELAY FOR INTERIOR LIGHT GREEN/WHITE
- CTR – CONTROL POWER TRANSFORMER – 500VA @ 120V
- DISC – DISCONNECT SWITCH
- EMI – EXPANSION MODULE (I/O MODULE)
- F2 – SPACE HEATER FUSE
- GFEPD – GROUND-FAULT ELECTRICAL PROTECTION DEVICE
- HTC – HEAT TRACE
- HTR2 – HEATER, SPACE, 3.5KW
- HTR3 – HEATER, FAN, ENCLOSURE, 300W, 120VAC
- LTI – INSIDE AREA LIGHT GREEN/WHITE
- LTI2 – OUTSIDE AREA LIGHT/ALARM LIGHT
- PB – SILENCE PUSH BUTTON
- PDB – POWER DISTRIBUTION BLOCK
- PFU – TRANSFORMER PRIMARY FUSE
- PC – PROGRAMMABLE CONTROLLER
- PROX1 – SHOWER PROXIMITY SWITCH
- PROX2 – EYEWASH PROXIMITY SWITCH
- PS – POWER SUPPLY, 120W @ 24VDC
- TB – TERMINAL BLOCK
- TS1A12 – SPACE HEATER THERMOSTAT
- TS1A14 – HEAT TRACE THERMOSTAT
- TS1A15 – JUNCTION BOX HEATER THERMOSTAT

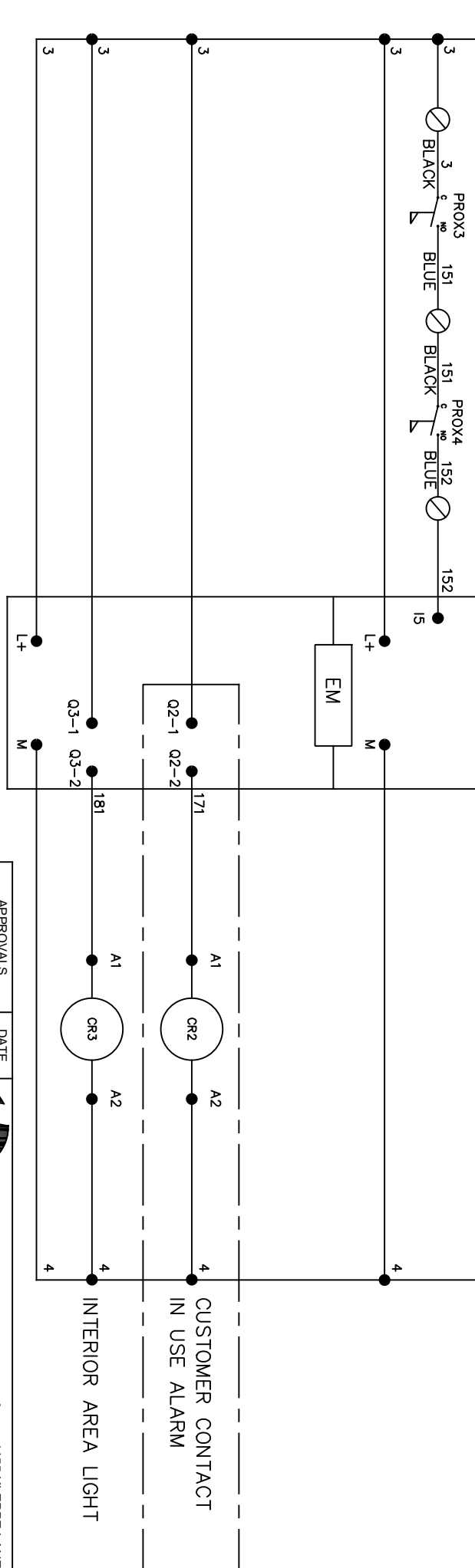
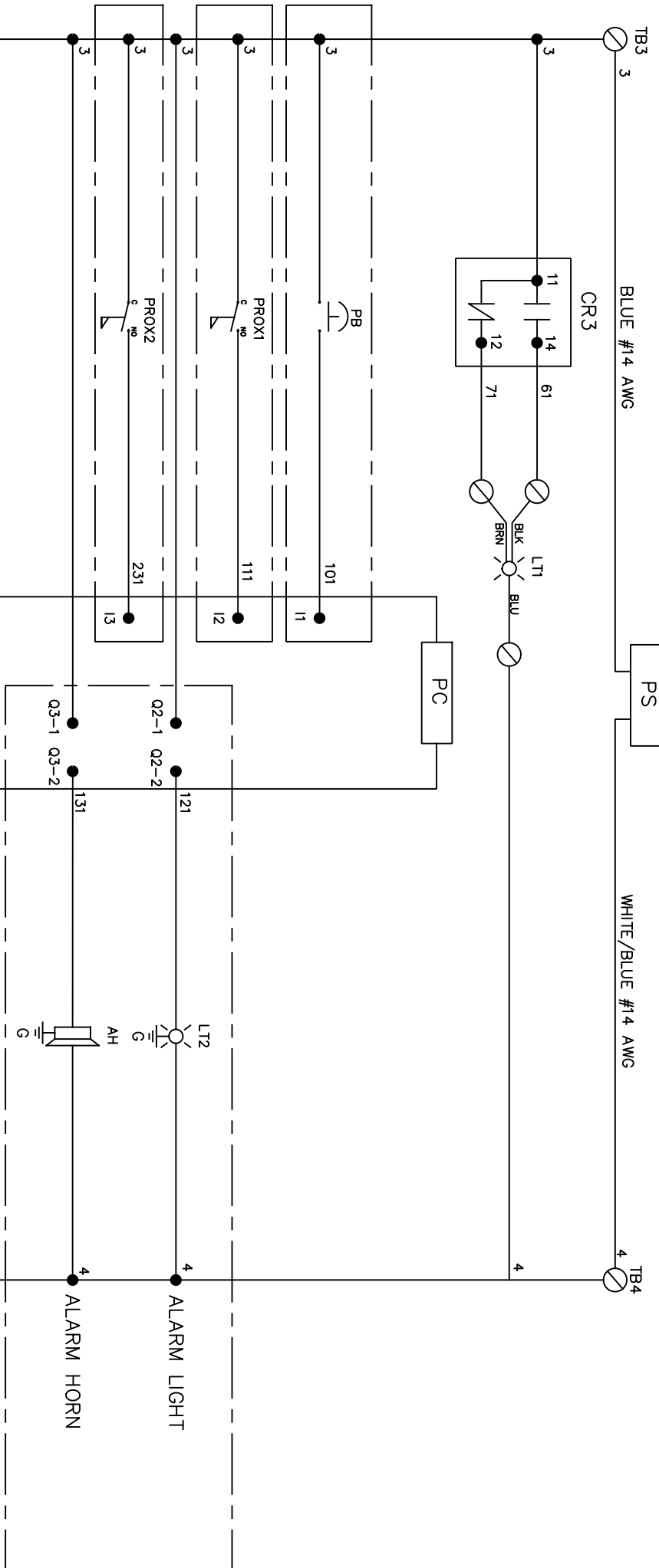
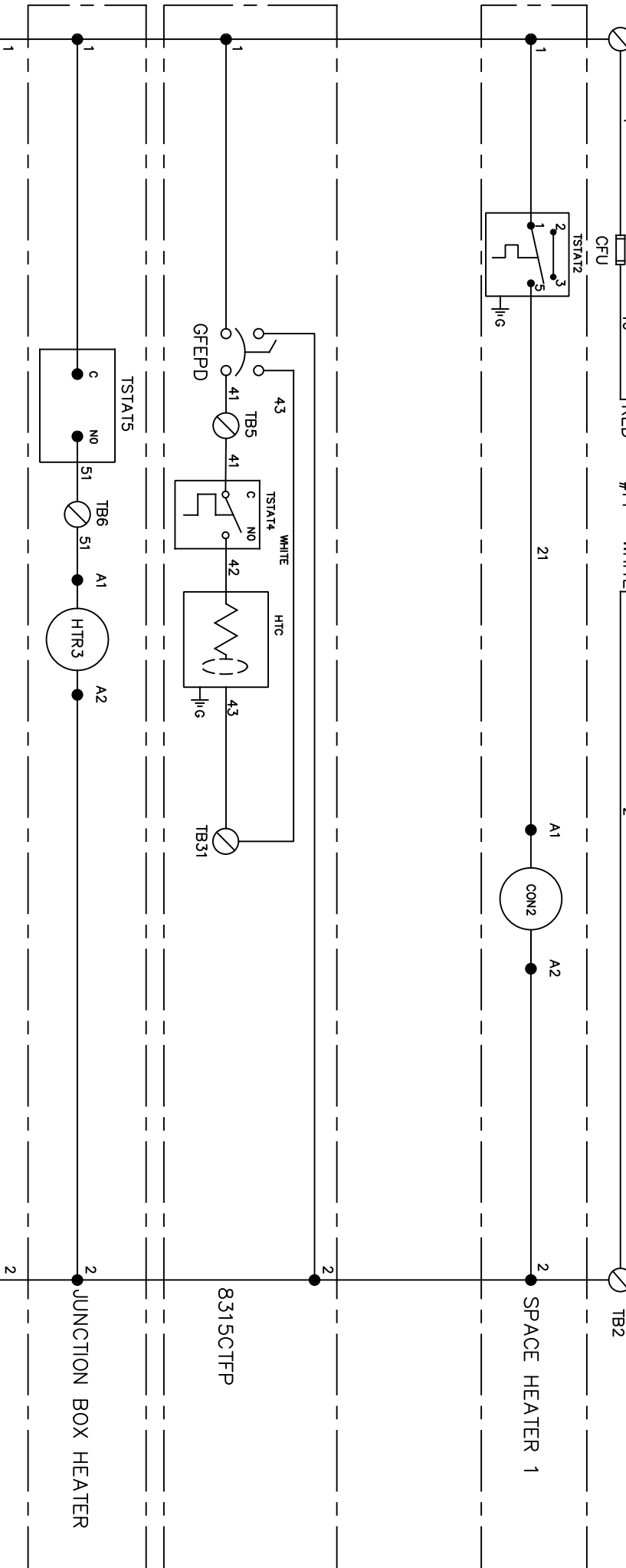
CONTROL RELAY CONTACT RATINGS:
6A @ 250 VAC/30VDC RESISTIVE
SWITCH POSITION SHOWN FOR ALARM CONDITION



- NOTES:
- AREA CLASSIFICATION: ORDINARY
 - AVAILABLE AMBIENT TEMPERATURE RANGES:
-50°F - 104°F, -30°F - 104°F, 32°F - 104°F, 32°F - 120°F
 - RATINGS: CONFIGURABLE WITH TYPE 4/4X JUNCTION BOX FOR INDOOR OR OUTDOOR LOCATION

THE ATTACHED DESIGNS ARE CONSIDERED TRADE SECRETS AND POTENTIALLY PATENTABLE. IN ACCORDANCE WITH CONFIDENTIALITY AND NON-DISCLOSURE AGREEMENT, THESE DESIGNS IN ACTUAL OR CONCEPTUAL FORMS CANNOT BE DISCLOSED, REPRODUCED OR USED WITHOUT HAWS' EXPRESS WRITTEN CONSENT.

FUSE CHART			
	DFU	F2	PFU
208V 1PH	30A	25A	6A
240V 1PH	30A	5.6A	5.6A
208V 3PH	30A	15A	6A
240V 3PH	30A	12A	5.6A
480V 3PH	30A	2.8A	5.6A
600V 3PH	30A	5A	2A
FUSE TYPE	JKS	KLKR	KLDR



APPROVALS

DRAWN

IR

08/18/20

CHECKED

AM

11/23/21

APPROVED

AM

11/23/21

JOB NUMBER

11/23/21

1455 KLEPPE LANE

SPARKS, NEVADA, 89431

USA

8730 - OUTDOOR HEATED SHOWER AND EYE/FACE WASH SYSTEM

THIRD ANGLE PROJECTION

NOTICE OF PROPRIETARY INFORMATION

HAWS CORPORATION AND THE DATA DISCLOSED HEREIN OR HEREWITH IS NOT TO BE REPRODUCED, USED, OR DISCLOSED IN ANY FORM OR BY ANY MEANS, WITHOUT THE WRITTEN PERMISSION OF HAWS CORPORATION.

SCALE

SIZE

PART NUMBER

0580001083-D-EL

1

C

2

REV		DESCRIPTION	ECON	DATE	BY
2	PER ECO		5024	01/12/21	IR

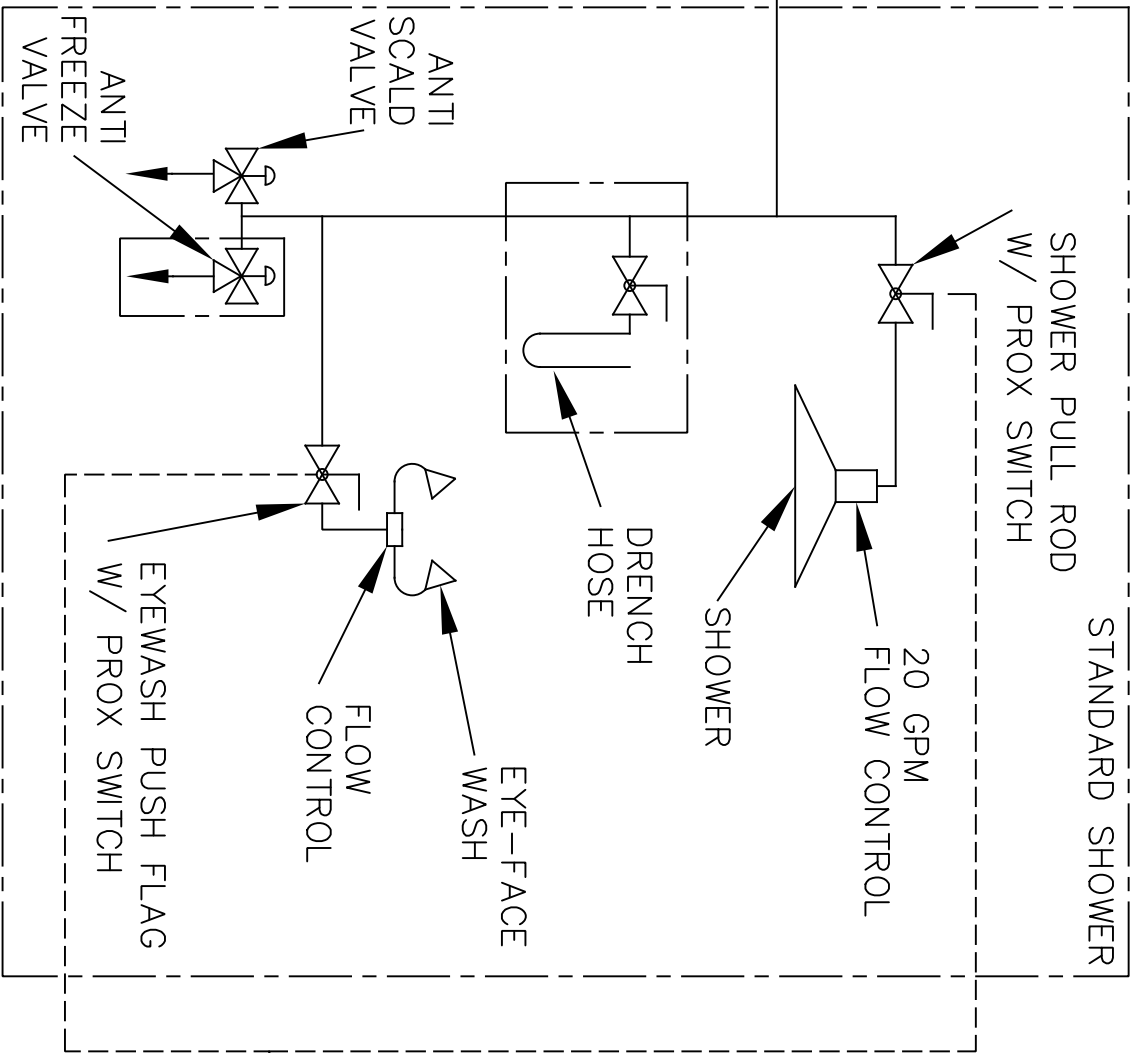
4

3

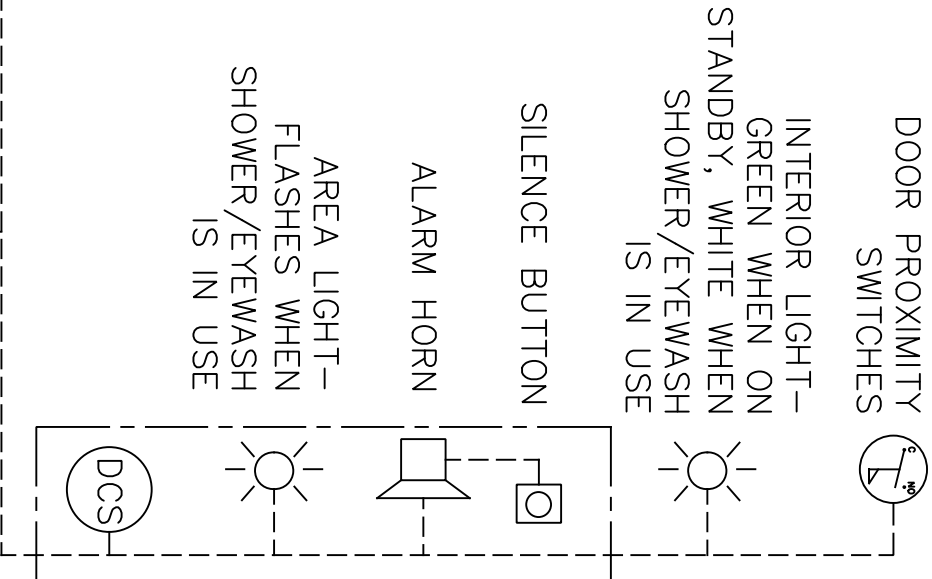
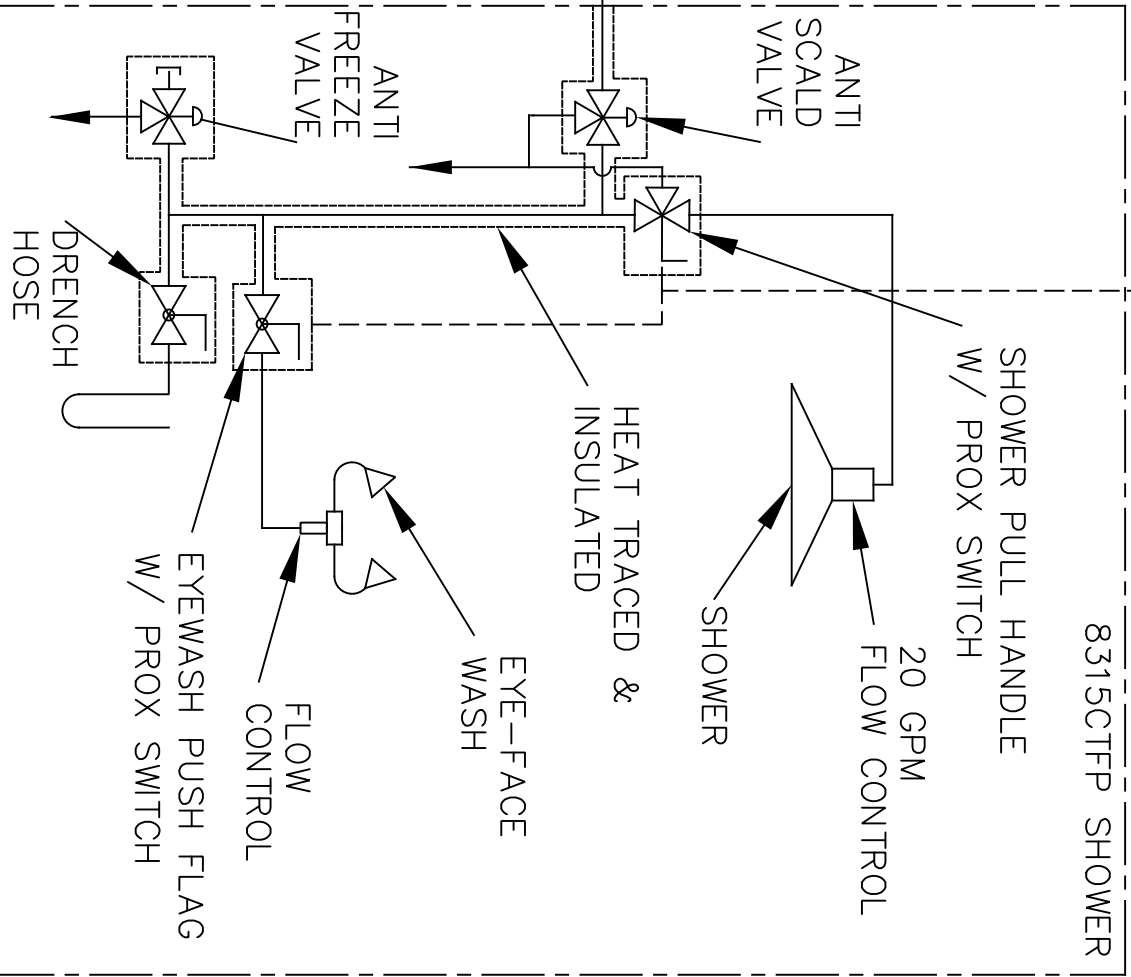
2

1

CUSTOMER CONNECTION
TEPID WATER INLET
1-1/2" NPT UNION
0-30 GPM @ 30-90 PSI
60°F-95°F



CUSTOMER CONNECTION
TEPID WATER INLET
1-1/2" NPT UNION
0-30 GPM @ 30-90 PSI
60°F-95°F



OPTIONAL FEATURE THAT CAN BE
CONFIGURED WHEN PURCHASED

- NOTES:
1. AREA CLASSIFICATION: ORDINARY
 2. AVAILABLE AMBIENT TEMPERATURE RANGES:
-50°F - 104°F, -20°F - 104°F, 32°F - 104°F, 32°F - 120°F
 3. RATINGS: CONFIGURABLE WITH TYPE 4/4X JUNCTION BOX
FOR INDOOR OR OUTDOOR LOCATION

APPROVALS	DATE
DRAWN IR	08/18/20
CHECKED AM	11/23/21



1455 KLEPPE LANE
SPARKS, NEVADA, 89431
USA

8730 - OUTDOOR HEATED SHOWER
AND EYE/FACE WASH SYSTEM

NOTICE OF PROPRIETARY INFORMATION
THIS DOCUMENT IS THE PROPERTY OF HAWS CORPORATION AND THE DATA
DISCLOSED HEREIN OR HEREWITH IS NOT TO BE REPRODUCED,
USED, OR DISCLOSED IN WHOLE OR IN PART TO ANYONE WITHOUT
THE WRITTEN PERMISSION OF HAWS CORPORATION.

SCALE	SIZE	PART NUMBER	THIRD ANGLE PROJECTION
1	C	0580001083.D-PID	SH 1 OR 1 REV

4

3

2

1