



# model 8720

## ePOD™ Outdoor Overhead Tank Combination Shower

### FEATURES & BENEFITS

#### CONSTRUCTION

Stainless steel pipe, bronze valves, HDPE tank and aluminum structural members provide superior defense in a highly corrosive environment.

#### QUALITY CONTROL

Fully tested and easily assembled on site for quick placement and hook-up.

#### EYE/FACE WASH

AXION® MSR eye/face wash head uses an inverted directional laminar flow to sweep contaminants away from the vulnerable nasal cavity.

#### SUPERIOR SAFETY

Enhanced victim comfort with AXION® eye/face wash and shower incorporating bronze valves for easy activation. Exceeds ANSI tepid water constant flow requirements (17+ min @20 GPM with 530 gallon tank) with tepid water to an insulated booth that is heated to 70° F (21° C) creating a comfortable environment for the user.

#### AVAILABLE ELECTRICAL CONFIGURATIONS

Haws provides systems at various voltage options, including 600V 3ph, 208V 1ph, 208V 3ph, 240V 1ph, and 240V 3ph. Electrical area rating options include Type 4 Ordinary Location. Hazardous Location up to CL1 Div2 B, C, D, T3.

#### VALVES

Eye/face wash valve is designed to make the flushing of contaminants occur with the simple push of a stainless steel flag. Shower ball valve is designed to make the flushing of fluid occur with the pull of a triangular lever. Both are made of bronze.

#### EXTREME WEATHER OPTIONS

Select from three Environmental packages including a Northern Package with protection to -20° F, an Arctic Package with protection to -50° F, and a Desert Package for extreme heat to +120° F

### OPTIONS

Optional equipment to accommodate virtually any specific need includes:

- Stainless steel valves and/or piping.
- Temperature control packages including 4 or 6 kW immersion heaters, integrated space heater, and heat-traced and insulated shower/eyewash.
- Alarm packages.
- Electrical packages including 208V, 240V, and 600V options.
- Safety first aid kit and stretcher.

For more information, visit [www.hawsc.com](http://www.hawsc.com) or call (888) 640-4297.



### SPECIFICATIONS

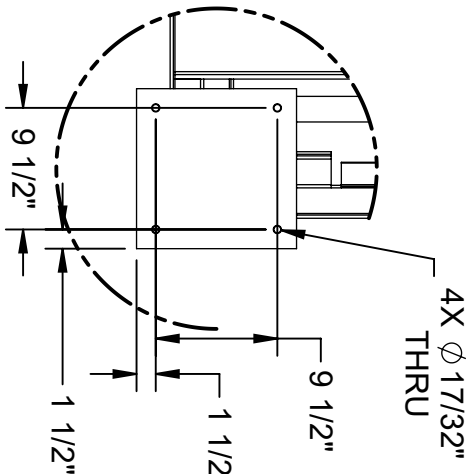
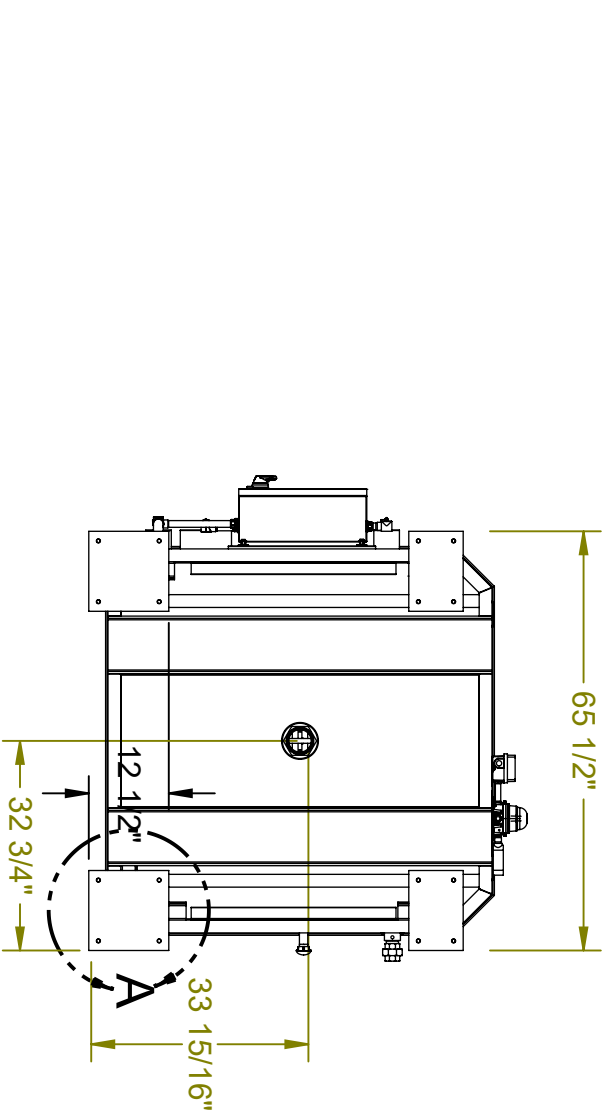
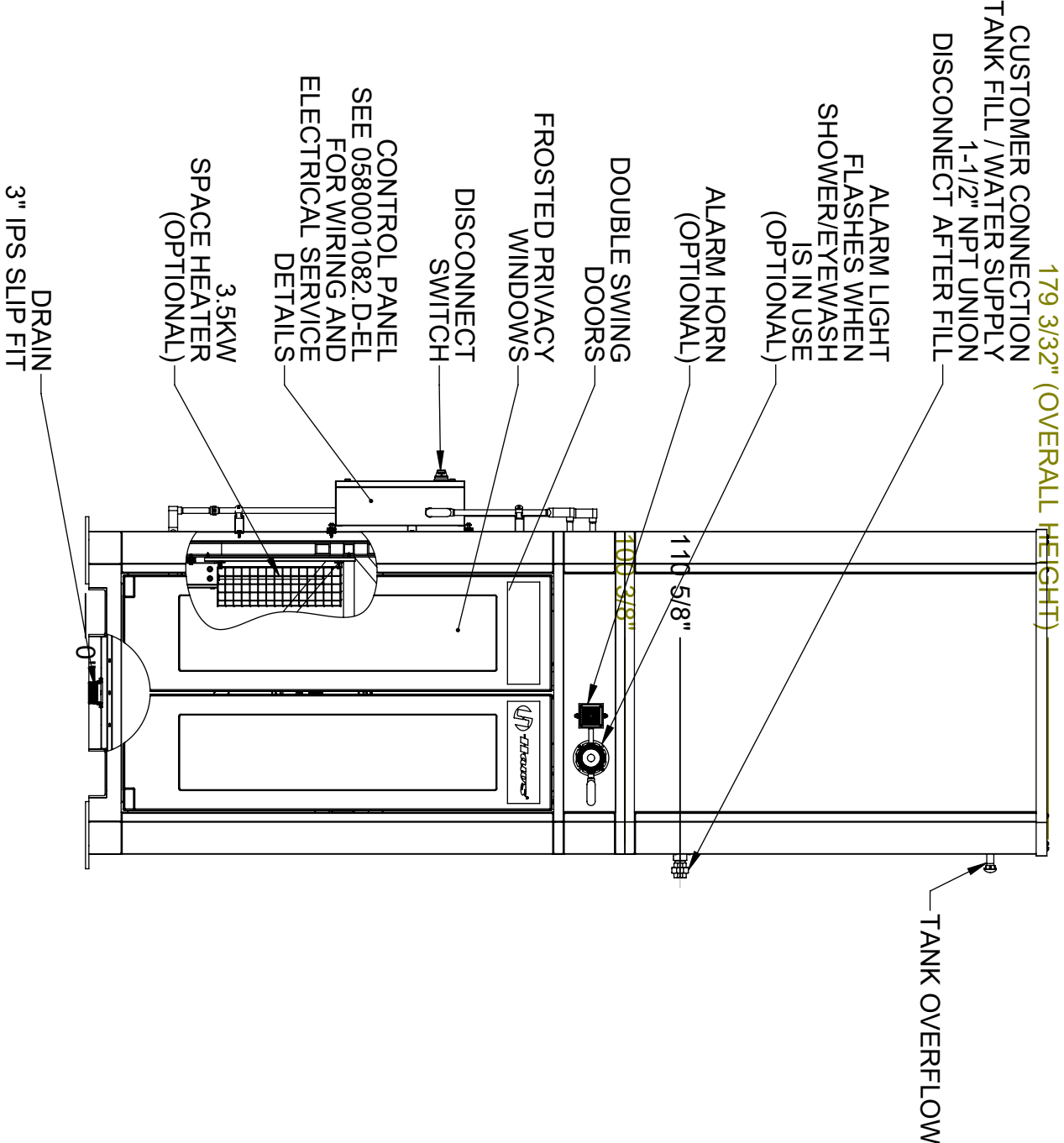
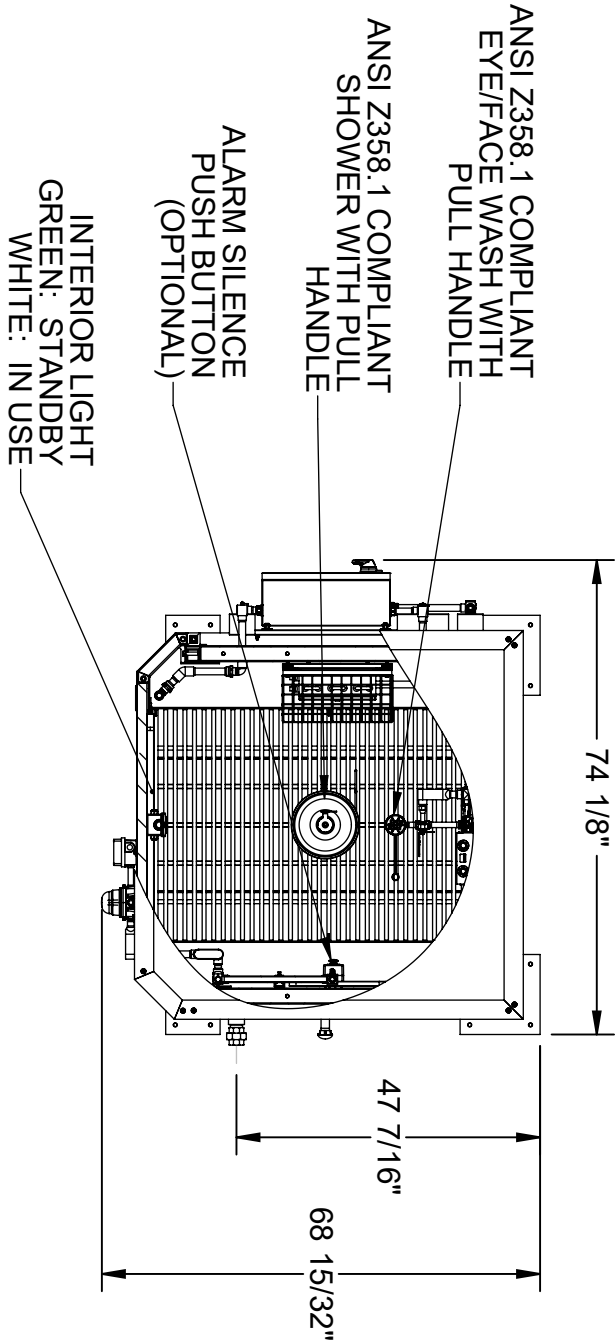
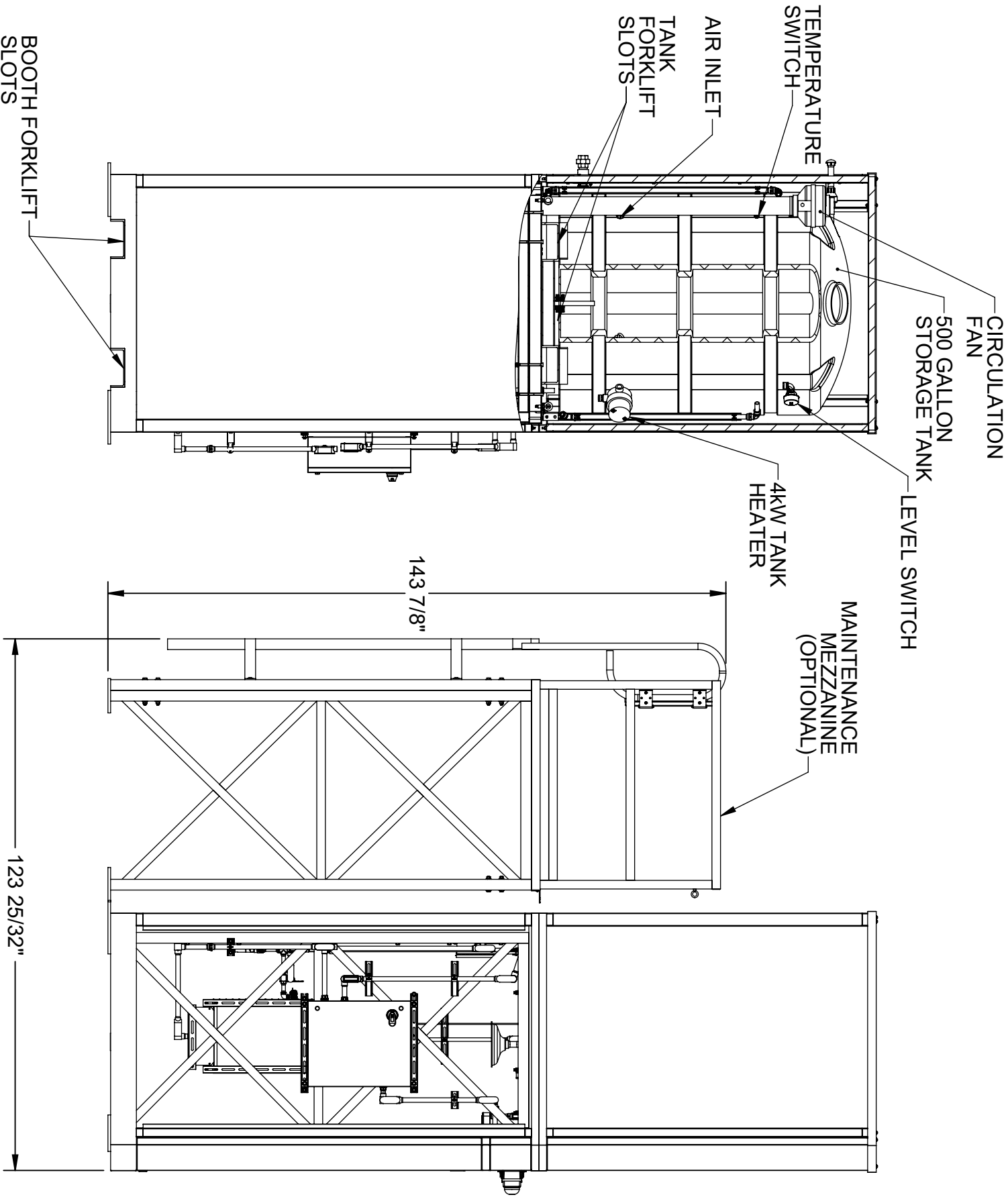
Model 8720 ePOD™ indoor/outdoor, insulated overhead tank drench shower and eye/face wash within a 5' x 5' (1.52 x 1.52 m) all-weather aluminum structure covered with a bright green, chemically resistant, water-proof coating, protected with UV inhibitors. The unit provides optional operating temperature ranges of -50° to 120° F (-45.5° to 48.9°C). The use of an Advanced Programmable Monitoring Control System allows for real-time control of the operating system. Includes dual spring-loaded, self-closing shower doors and trimmed with large directional arrows, large and small universal shower/eyewash signs, fiberglass floor grate, and 3" IPS drain. The internal booth temperature is maintained by a space heater. The overhead 530-gallon (2006 L) tank is constructed of insulated HDPE with water temperature controlled by immersion heating. Optional model 9084 cleansing stick can be used to provide continual protection against pathogenic bacteria in the water for up to 3 years. The standard electrical system comes with 480V 3ph standard (other voltages available). Emergency flushing is provided by a AXION® showerhead and an AXION® MSR eye/face wash head with greater than 3 GPM flow. The entire system meets the ANSI Z358.1 standard for emergency eyewash and shower equipment.

### APPLICATIONS

Perfect for mining, Petro-Chemical, bio-diesel, and ethanol processing facilities as well any other remote outdoor location without a potable water supply where a drench shower and eyewash are required. Combination shower and eyewash is certified by CSA to meet the ANSI Z358.1 Standard for Emergency Eyewash and Shower Equipment. For the electrical certification, the system is certified by accredited Certification Body.

REVISIONS			
REV	DESCRIPTION	ECN	DATE
1	INITIAL RELEASE	5599	9/18/2020
2	PER ECO	5624	11/22/2021

- NOTES:
- DIMENSIONS IN US INCHES
  - ALL TOLERANCES:  $\pm 1/2"$
  - ESTIMATED WEIGHT:  
DRY: 2500 LBS  
WET: 6900 LBS
  - AREA CLASSIFICATION: ORDINARY
  - AVAILABLE AMBIENT TEMPERATURE RANGES:  
-50°F TO 104°F, -30°F TO 104°F, 32°F TO 120°F
  - RATINGS: CONFIGURABLE WITH TYPE 4/4X JUNCTION BOX FOR INDOOR OR OUTDOOR LOCATION
  - NOT ALL FEATURES ARE STANDARD

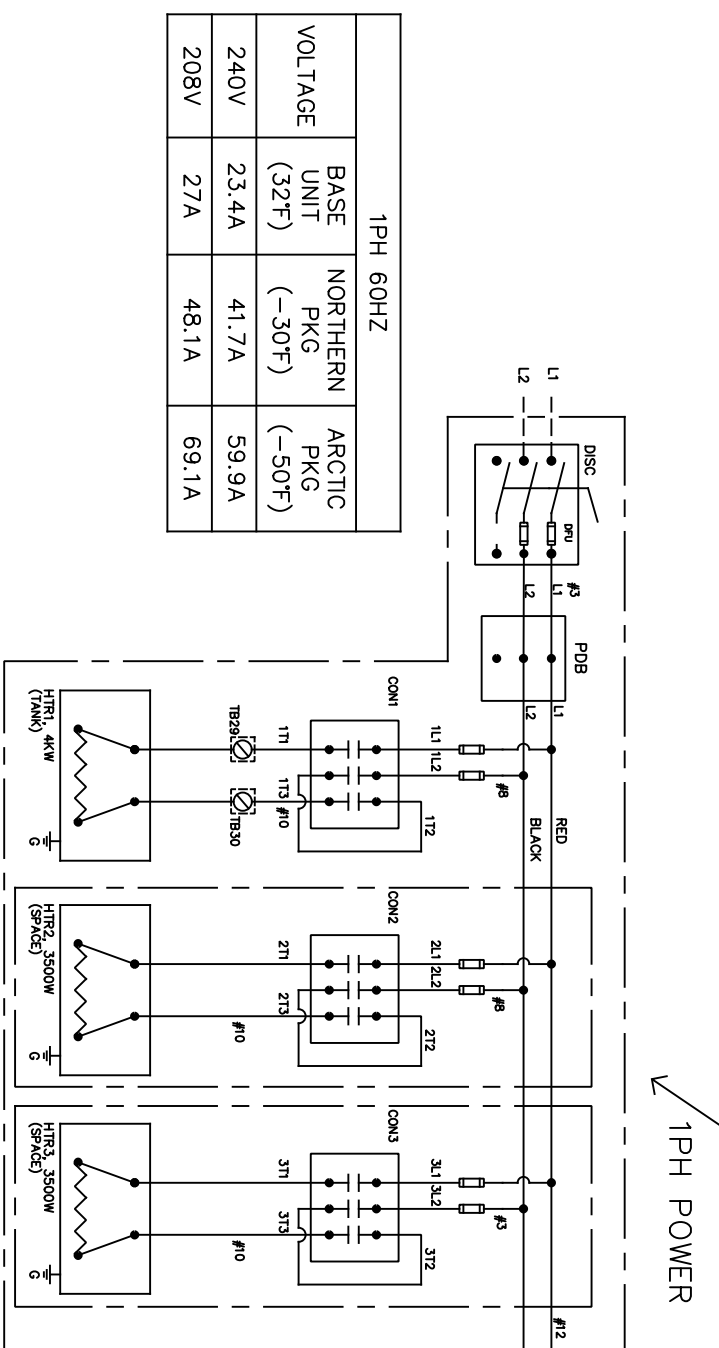
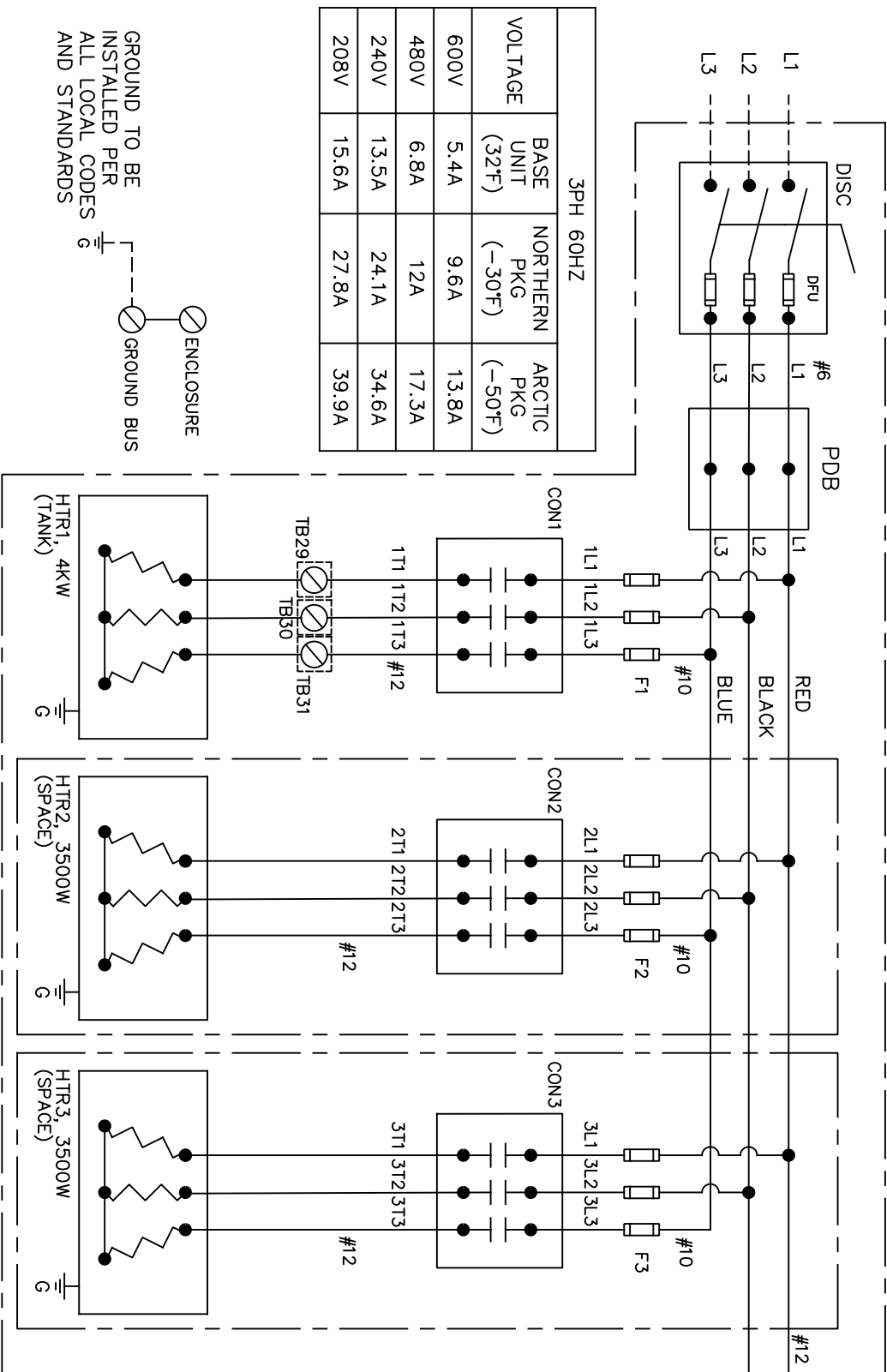


NOTE: WHERE APPLICABLE, 16 EACH HILTI CONCRETE ANCHORS P/N HIT-HY-200 + HIT-Z 1/2 ARE RECOMMENDED (NOT SUPPLIED) SEE INSTALLATION MANUAL FOR INSTALLATION DETAILS

THE ATTACHED DESIGNS ARE CONSIDERED TRADE SECRETS AND POTENTIALLY PATENTABLE. IN ACCORDANCE WITH CONFIDENTIALITY AND NON-DISCLOSURE AGREEMENT, THESE DESIGNS IN ACTUAL OR CONCEPTUAL FORMS CANNOT BE DISCLOSED, REPRODUCED OR USED WITHOUT HAWS' EXPRESS WRITTEN CONSENT.

CUSTOMER INFO/TAG #:		1455 KLEPPE LANE SPARKS, NEVADA 89431	
JOB NUMBER:		TITLE	
DRAWN BY:		OUTDOOR OVERHEAD TANK COMBINATION SHOWER	
DRAWN DATE:		THIRD ANGLE PROJECTION	
CHECKED BY:	AM	NOTICE OF PROPRIETARY INFORMATION INFORMATION CONTAINED HEREIN IS THE SOLE PROPERTY OF HAWES CORPORATION. IT IS TO BE USED ONLY FOR THE PROJECT AND NOT FOR ANY OTHER PROJECT OR FOR ANY OTHER PURPOSE.	
CHECKED DATE:	11/23/21	GA	
APPROVED BY:	IR	SCALE SIZE PART NO.	
APPROVAL DATE:	11/30/21	1:32 C 0580001082.D-GA	
	2	REV. 2	

FUSE CHART									
FUSE AMP NOMEN	F1			F2			F3		
	1PH	100A	25A	25A	25A	6A	PFU	CFU	
208V 1PH	60A	100A	25A	25A	25A	6A	5.6A	5.6A	
240V 1PH	60A	100A	25A	20A	20A	5.6A	5.6A	5.6A	
208V 3PH	30A	60A	15A	15A	15A	6A	5.6A	5.6A	
240V 3PH	30A	60A	12A	12A	12A	5.6A	5.6A	5.6A	
480V 3PH	30A	30A	6A	6A	6A	2.8A	5.6A	5.6A	
600V 3PH	30A	30A	5A	5A	5A	2A	5.6A	5.6A	
FUSE TYPE	JKS	JKS	KLKR	KLKR	KLKR	KLDR	KLDR	KLDR	

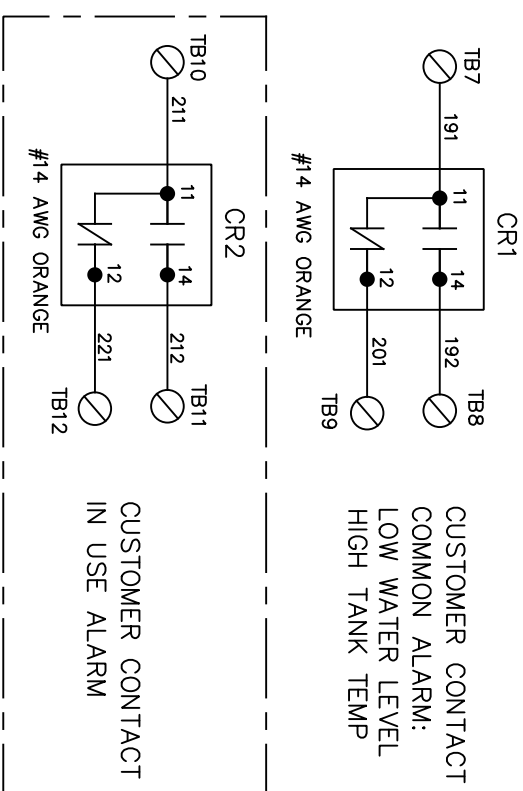


CONDUCTOR TERMINAL RATING			
DISCONNECT		DRY CONTACTS	
DISCONNECT SIZE	CONDUCTOR SIZE (AWG)	TORQUE VALUE (IN-LBS)	TORQUE VALUE (IN-LBS)
100A	14-2/0	133-194	
60A	14-4	30-35	
30A	18-8	13-18	

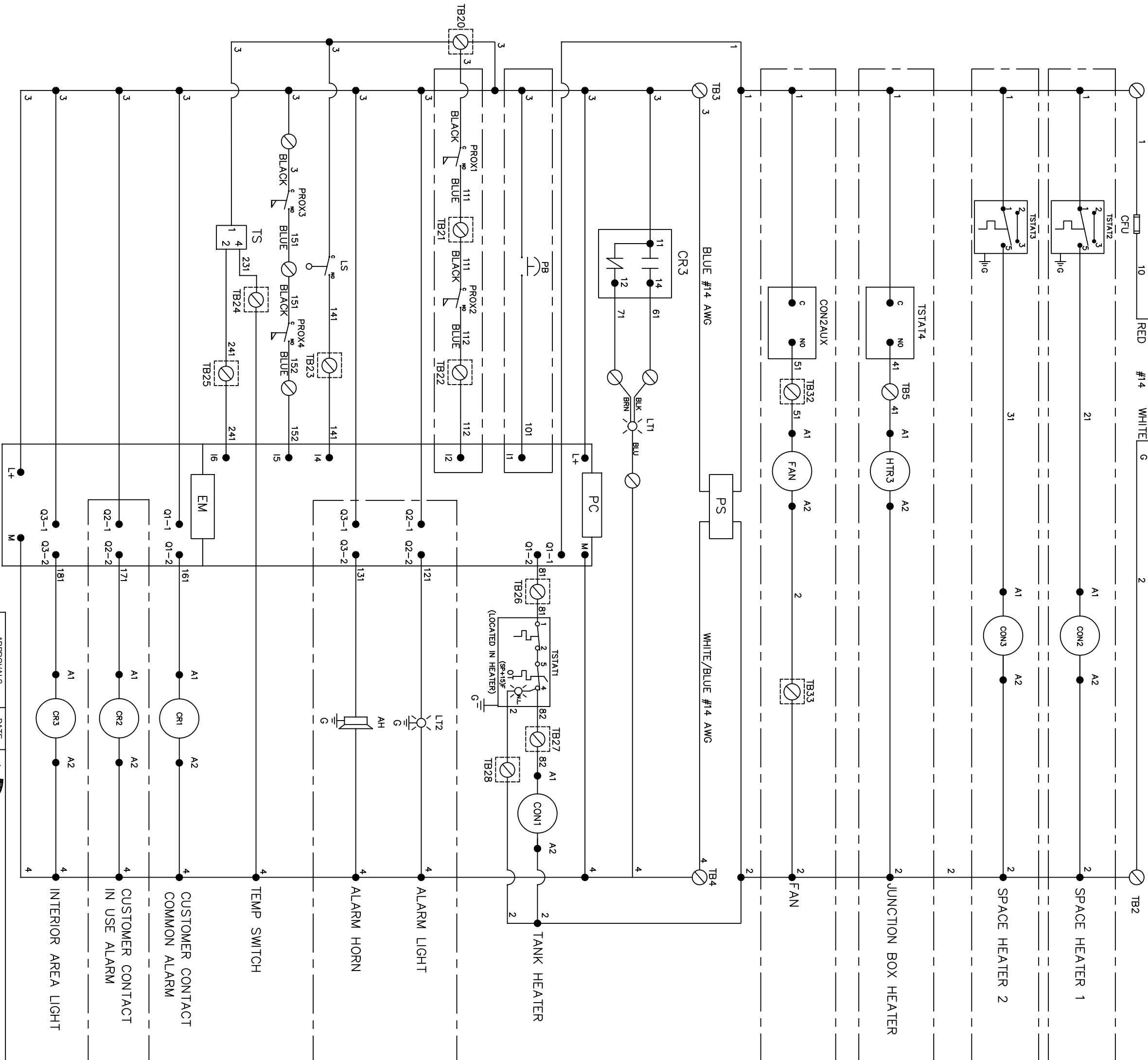
COMPONENT DESIGNATION

- AH - ALARM HORN
- CFU - TRANSFORMER CONTROL FUSE
- CON1 - CONTACTOR 3 POLE, TANK HEATER
- CON2 - CONTACTOR 3 POLE, SPACE HEATER
- CON3 - CONTACTOR 3 POLE, SPACE HEATER
- CON2AUX - CONTACTOR AUXILIARY CONTACTS (FAN, INTERNAL)
- CR - CONTROL RELAY
- CTR - CONTROL POWER TRANSFORMER - 500VA @ 120V
- DISC - DISCONNECT SWITCH
- EM - EXPANSION MODULE
- F1 - TANK HEATER FUSE
- F2 - SPACE HEATER FUSE
- F3 - SPACE HEATER FUSE
- FAN - FAN (FACTORY CONFIGURABLE - INTERNAL OR VENT)
- HTR1 - HEATER, TANK, 4kW
- HTR2 - HEATER, SPACE, 3.5kW
- HTR3 - HEATER, SPACE, 3.5kW
- HTR4 - HEATER, FAN, ENCLOSURE, 300W, 120VAC
- LS - LEVEL SWITCH
- LTI - INSIDE AREA LIGHT GREEN/WHITE
- LTI2 - OUTSIDE AREA LIGHT GREEN/WHITE
- PB - SILENCE PUSH BUTTON
- PDB - POWER DISTRIBUTION BLOCK
- PFU - TRANSFORMER PRIMARY FUSE
- PC - PROGRAMMABLE CONTROLLER
- PROX1 - SHOWER PROXIMITY SWITCH
- PROX2 - EYEWASH PROXIMITY SWITCH
- PROX 3/4 - DOOR PROXIMITY SWITCH
- PS - POWER SUPPLY, 120W @ 24VDC
- TB - TERMINAL BLOCK
- TS - TEMPERATURE SWITCH (HIGH LIMIT)
- TSTAT1 - TANK HEATER THERMOSTAT
- TSTAT2 - SPACE HEATER THERMOSTAT
- TSTAT3 - SPACE HEATER THERMOSTAT
- TSTAT4 - JUNCTION BOX HEATER THERMOSTAT

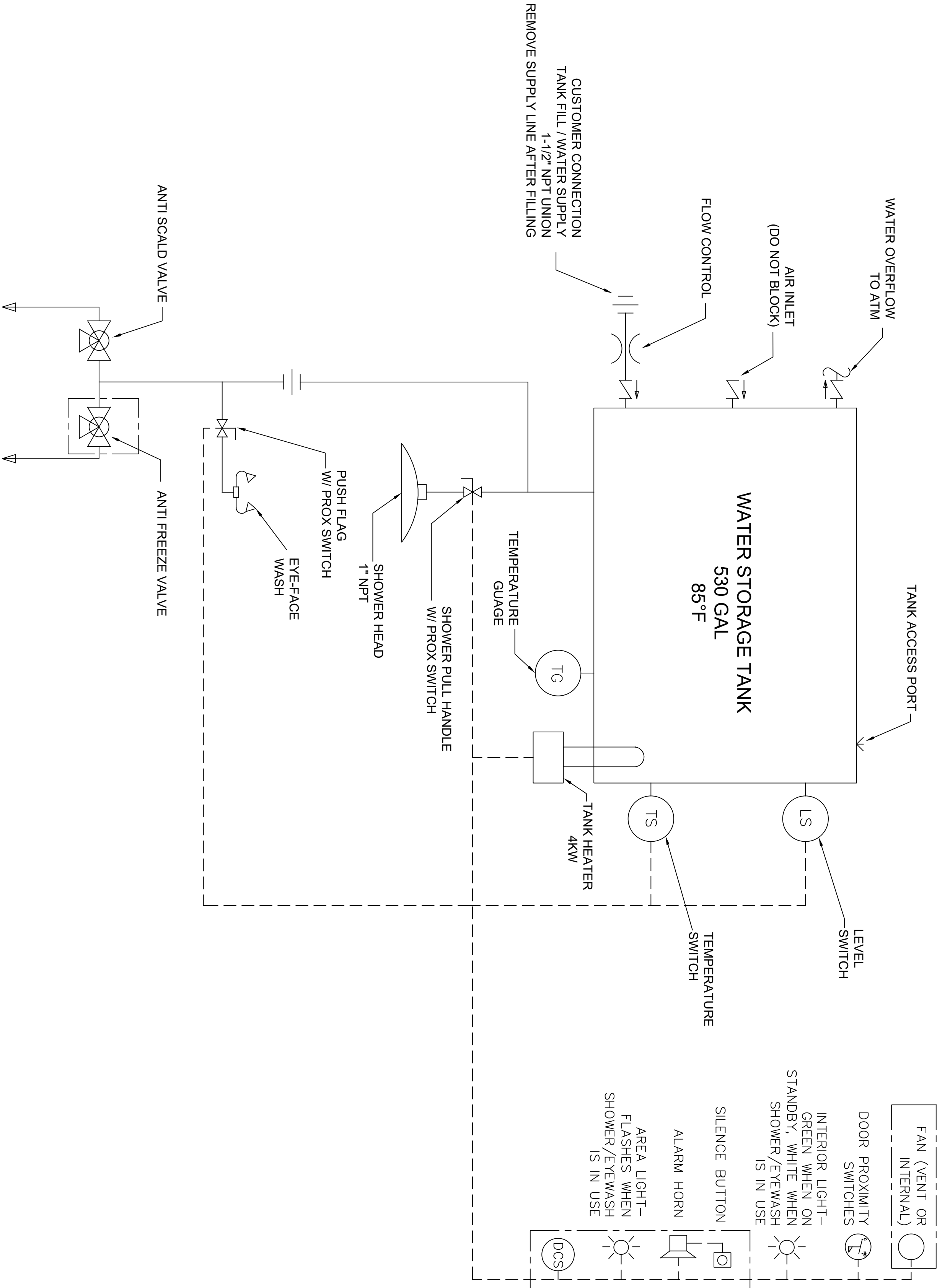
CONTROL RELAY CONTACT RATINGS:  
6A @ 250 VAC/30VDC RESISTIVE  
SWITCH POSITION SHOWN FOR ALARM CONDITION



- NOTES:
- AREA CLASSIFICATION: ORDINARY
  - AVAILABLE AMBIENT TEMPERATURE RANGES:  
-50°F - 104°F, -30°F - 104°F, 32°F - 104°F, 32°F - 120°F
  - RATINGS: CONFIGURABLE WITH TYPE 4/4X JUNCTION BOX FOR INDOOR OR OUTDOOR LOCATION




REV		REVISIONS		ECON		DATE	BY
REV	DESCRIPTION						
2	PER ECO			5624		01/12/21	IR



- NOTES:
- AREA CLASSIFICATION: ORDINARY
  - AVAILABLE AMBIENT TEMPERATURE RANGES:  
-50°F - 104°F, -20°F - 104°F, 32°F - 104°F, 32°F - 120°F
  - RATINGS: CONFIGURABLE WITH TYPE 4/4X JUNCTION BOX FOR INDOOR OR OUTDOOR LOCATION

OPTIONAL FEATURE THAT CAN BE  
CONFIGURED WHEN PURCHASED

THE ATTACHED DESIGNS ARE CONSIDERED TRADE SECRETS  
AND POTENTIALLY PATENTABLE. IN ACCORDANCE WITH  
CONFIDENTIALITY AND NON-DISCLOSURE AGREEMENT,  
THESE DESIGNS IN ACTUAL OR CONCEPTUAL FORMS  
CANNOT BE DISCLOSED, REPRODUCED OR USED WITHOUT  
HAWES' EXPRESS WRITTEN CONSENT.

APPROVALS		DATE		1455 KLEPPE LANE SPARKS, NEVADA, 89431 USA	
DRAWN	IR	08/18/20		8720 - OUTDOOR OVERHEAD TANK COMBINATION SHOWER	
CHECKED	AM	11/23/21			
APPROVED	IR	11/30/21			
JOB NUMBER			TITLE:		THIRD ANGLE PROJECTION
CUSTOMER INFO TAG #:			NOTICE OF PROPRIETARY INFORMATION		PAID
			HAWES CORPORATION AND THE DOCUMENT HEREIN ARE THE PROPERTY OF HAWES CORPORATION AND THE DATA DISCLOSED HEREIN OR HEREWITH IS NOT TO BE REPRODUCED, USED, OR DISCLOSED IN WHOLE OR IN PART TO ANYONE WITHOUT HAWES' PERMISSION OR HAWES' CONSENT.		SH 1 OR 1 REV
SCALE SIZE (PART NUMBER)			N/A C		2