



# model 8710

## Outdoor Tempered Shower and Eye/Face Wash System

### FEATURES & BENEFITS

#### STANDARDIZED PLATFORM

Offering a standardized line of water tempering solutions providing shorter lead times, advanced compliance, cost efficiencies, and customizable configuration options.

#### VISUAL PLACEMENT

High visibility safety green powder coating, internal illumination and an optional external booth illumination package announces to all in the immediate area there is safety equipment nearby.

#### BLENDING SYSTEM

Safe, fully engineered thermostatic mixing valve for mixing large volumes of hot and cold water guarded with anti-scald protection and full flow cold water bypass to provide tempered water in adverse situations.

#### TANK SYSTEM OPTIONS

Tanks available: 119 Gal non-ASME (450 L), 120 Gal (454 L) ASME, or 200 Gal (757 L) ASME that will store enough hot water to provide a single 15 minute shower and eye/face wash use. Also available in ASME is a 318 Gal (1203 L) or 400 Gal (1514 L) that stores enough hot water to provide two 15 minute shower and eye/face wash uses before tank recovery is required.

#### AXION TECHNOLOGY

AXION® MSR eye/facewash head uses an inverted directional laminar flow to sweep contaminants away from the vulnerable nasal cavity, and hydrodynamic shower head design for even flow throughout the flow pattern.

#### ELECTRICAL SYSTEM OPTIONS

Haws provides systems at various voltage options, including 480V 3ph, 600V 3ph, 208V 1ph, 208V 3ph, 240V 1ph, and 240V 3ph. Electrical area rating options include Type 4 Ordinary Location and Hazardous Location up to CL1 DIV 2 B, C, D, T3

#### MONITORING

Advanced Programmable Monitoring Control System provides real-time digital display with many features including alarm cycle history and fault history. Capabilities include automatic alarm silencing reset, customer control room synchronization, and more.

#### EXTREME WEATHER OPTIONS

Select from three Environmental packages including a Northern Package with protection to -20° F, an Arctic Package with protection to -50° F, and a Desert Package for extreme heat to +120° F



### SPECIFICATIONS

Model 8710 heated enclosed shower and eye/face wash shall include a 5' x 10' (1.52 x 3.04 m) bright green, chemically resistant, water-proof coated booth made with an aluminum base, frame, and enclosure. This superior design provides optional operating temperature ranges of -50° to 120° F (-40° to 49° C), and shall include spring-loaded, self closing shower doors, equipment room door, and removable service panel. The use of an Advanced Programmable Monitoring Control System allows for real-time control of the operating system. The booth is trimmed with large directional arrows, large and small universal shower/eyewash signs, fiberglass floor grate, and 3" IPS inside caulk drain. Temperature extremes are protected by scald and freeze bleed valves. The internal booth temperature is maintained by a space heater. The standard alarm system is flow switch activated, and provides local audible and visible alarms. The tempered blending system will include an integral hot water supply, and will incorporate fail-safe features like anti-scald protection and full flow cold water bypass. There is the medically acclaimed AXION® 20 gpm (75.7L) showerhead and AXION® MSR 3.7gpm (14 L) eye/face wash head assembly (patent pending), along with a 3 gpm (11.4 L) side hanging drench hose.

### APPLICATIONS

Perfect for Petro-chemical, bio-diesel, and ethanol processing facilities, and other remote outdoor locations where drench showers with very cold water would pose a health hazard to employees and a liability to employers, or in shower areas exposed to cold air and wind where showering with very cold water could discourage proper flushing time. Model is certified by CSA to meet the ANSI Z358.1 Emergency shower and eyewash equipment. For the electrical certification, the system is certified by accredited Certification Body.

For more information, visit [www.hawsc.com](http://www.hawsc.com) or call (888) 640-4297.



| REVISIONS |                 |      |            |
|-----------|-----------------|------|------------|
| REV       | DESCRIPTION     | ECN  | DATE       |
| 1         | INITIAL RELEASE | 5589 | 9/6/20     |
| 2         | PER ECO         | 5624 | 11/19/2021 |

1

2

3

4

5

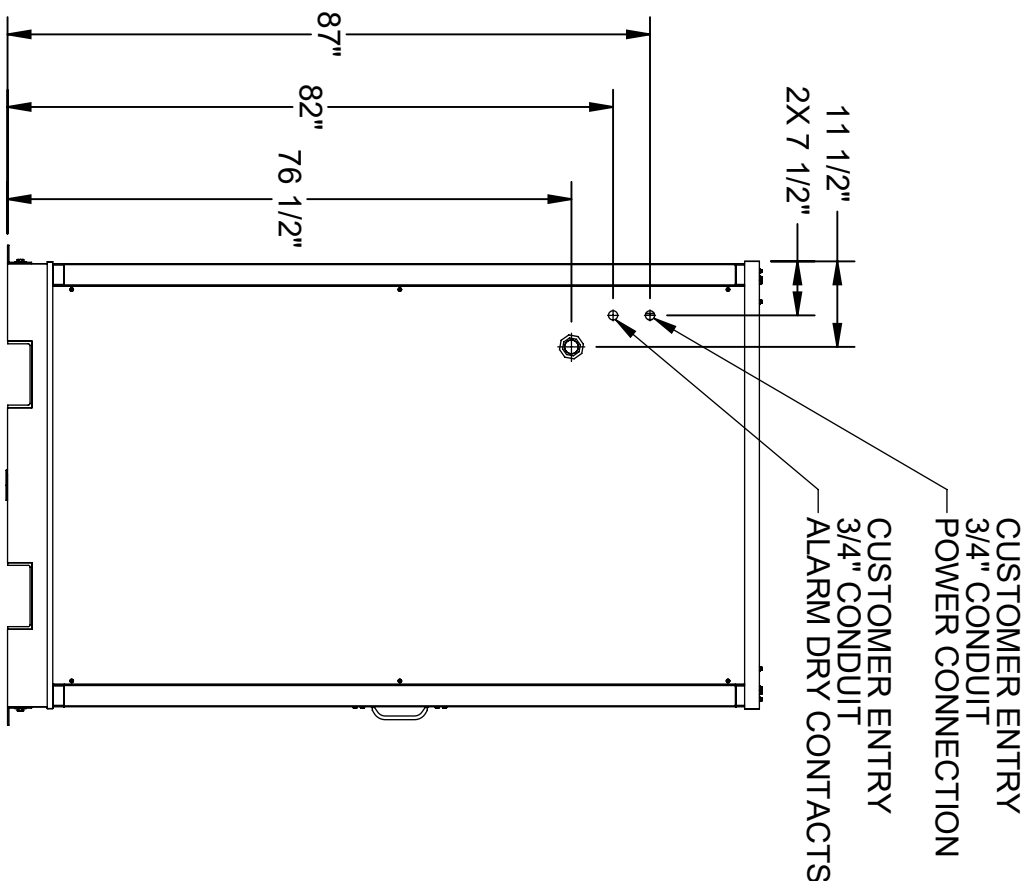
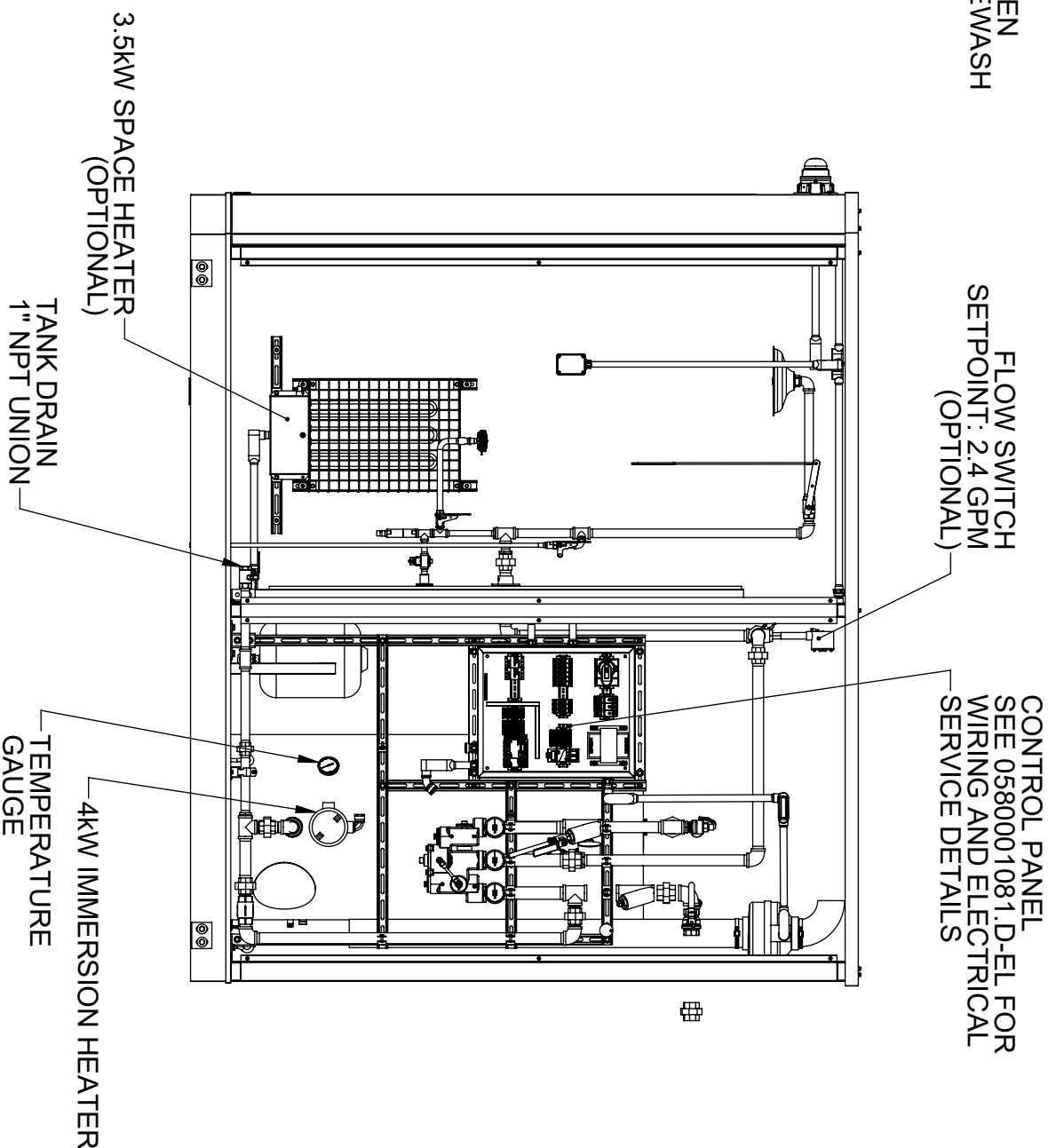
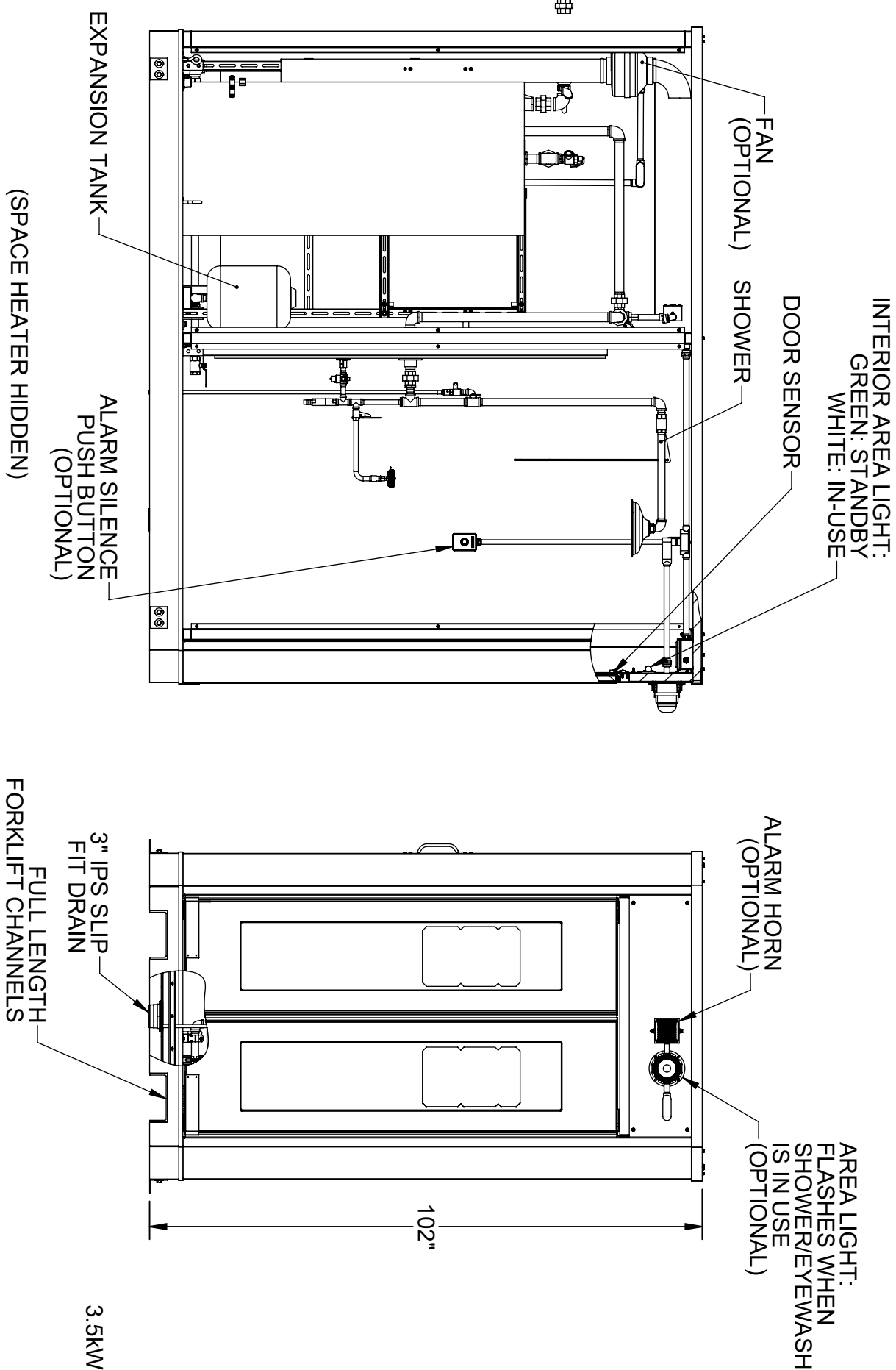
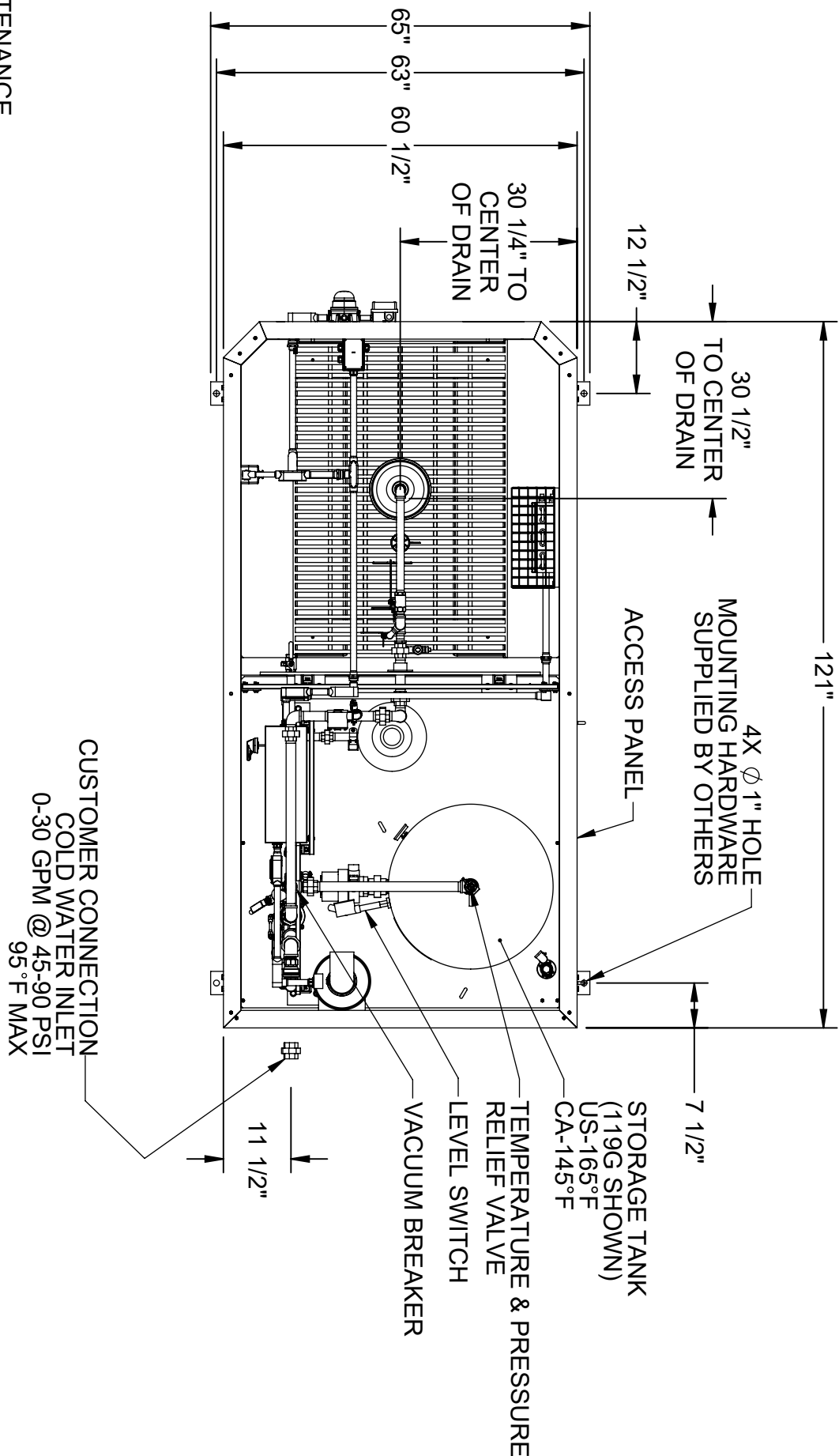
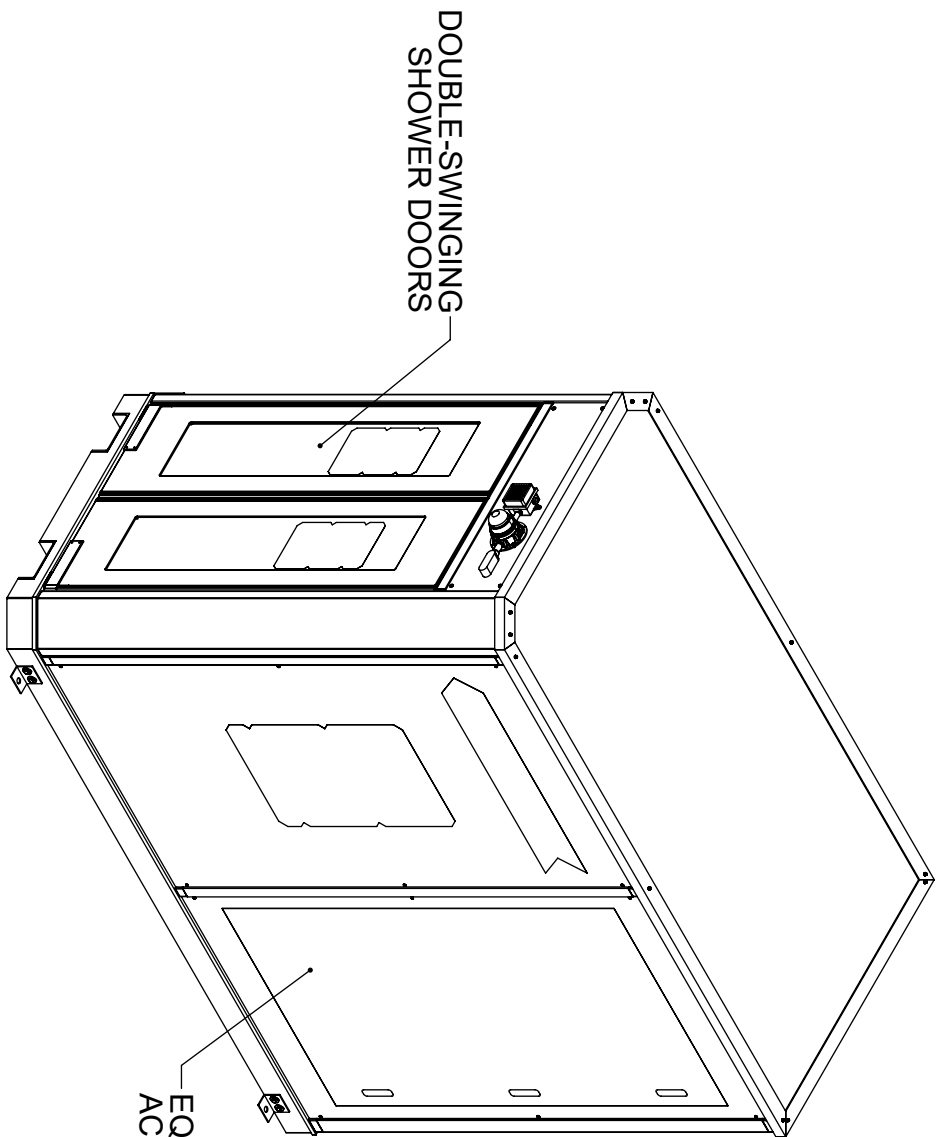
6

7

8

NOTES:

- DIMENSIONS IN INCHES
- ALL TOLERANCES:  $\pm 1/2"$
- ESTIMATED WEIGHT (119G TANK):  
DRY: 3250 LBS  
WET: 6700 LBS
- AREA CLASSIFICATION: ORDINARY
- AVAILABLE AMBIENT TEMPERATURE RANGES:  
-50°F - 104°F, -30°F - 104°F, 32°F - 104°F, 32°F - 120°F
- RATINGS: CONFIGURABLE WITH TYPE 4/4X JUNCTION BOX FOR INDOOR OR OUTDOOR LOCATION
- NOT ALL FEATURES ARE STANDARD

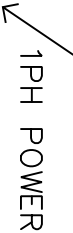
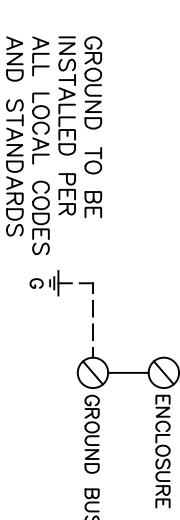


PANELS REMOVED FOR CLARITY

THE ATTACHED DESIGNS ARE CONSIDERED TRADE SECRETS AND POTENTIALLY PATENTABLE. IN ACCORDANCE WITH CONFIDENTIALITY AND NON-DISCLOSURE AGREEMENT, THESE DESIGNS IN ACTUAL OR CONCEPTUAL FORMS CANNOT BE DISCLOSED, REPRODUCED OR USED WITHOUT HAWS EXPRESS WRITTEN CONSENT.

| CUSTOMER INFO/TAG #: |          |   |  |
|----------------------|----------|---|--|
| JOB NUMBER:          |          | TITLE   |  |
| DRAWN BY:            | DP       | OUTDOOR TEMPERED SHOWER AND EYE/FACE WASH SYSTEM  |  |
| DRAWN DATE:          | 07/14/21 | NOTICE OF PROPRIETARY INFORMATION   |  |
| CHECKED BY:          | AM       | INFORMATION CONTAINED HEREIN IS THE SOLE PROPERTY OF HAWES CORPORATION. IT IS TO BE USED FOR THE PROJECT AND NOT FOR ANY OTHER PURPOSE. NO PART OF THIS INFORMATION IS TO BE REPRODUCED OR TRANSMITTED IN ANY FORM OR BY ANY MEANS, ELECTRONIC OR MECHANICAL, INCLUDING PHOTOCOPYING, RECORDING, OR BY ANY INFORMATION STORAGE AND RETRIEVAL SYSTEM, WITHOUT THE WRITTEN PERMISSION OF HAWES CORPORATION. |  |
| CHECKED DATE:        | 11/23/21 | THIRD ANGLE PROJECTION  |  |
| APPROVED BY:         | IR       | GA  |  |
| APPROVAL DATE:       | 11/30/21 | SCALE SIZE: PART NO. 0580001081.D-GA  |  |
|                      |          | REV. 2  |  |



COMPONENT DESIGNATION

CPU - TRANSFORMER CONTROL FUSE  
 CON1 - CONTACTOR 3 POLE, TANK HEATER  
 CON2 - CONTACTOR 3 POLE, SPACE HEATER  
 CON3 - CONTACTOR 3 POLE, SPACE HEATER  
 CON2AUX - CONTACTOR AUXILIARY CONTACTS (FAN, INTERNAL  
 CONTROL, PLAY)

CTR - CONTROL POWER TRANSFORMER - 500VA @ 120V  
DISC - DISCONNECT SWITCH  
EXP - EXPANSION MODULE

F1 – TANK HEATER FUSE  
F2 – SPACE HEATER FUSE  
F3 – SPACE HEATER FUSE  
FAN – FAN (FACTORY CONFIGURABLE – INTERNAL OR VENT)  
FS – FLOW SWITCH  
GEPD – GROUND–FAULT ELECTRICAL PROTECTION DEVICE  
HTC – HEAT TRACE  
HTR1 – HEATER, TANK, 4kW  
HTR2 – HEATER, SPACE, 3.5kW  
HTR3 – HEATER, SPACE, 3.5kW

L11 — INSIDE AREA LIGHT SW/WHITE  
 L12 — OUTSIDE AREA LIGHT/ALARM LIGHT  
 PB8 — SILENCE PUSH BUTTON  
 PFC — PROGRAMMABLE CONTROLLER  
 PDB — POWER DISTRIBUTION BLOCK  
 PFC — TRANSFORMER PRIMARY FUSE  
 PROX 3/4 — DOOR PROXIMITY SWITCH  
 TB — TERMINAL BLOCK  
 TS11 — TANK HEATER THERMOSTAT  
 TS12 — SPACE HEATER THERMOSTAT  
 TS13 — SPACE HEATER THERMOSTAT  
 TS14 — HEAT RACE THERMOSTAT

OPTIONAL FEATURE THAT CAN BE CONFIGURED WHEN PURCHASED

NOTES:

1. AREA CLASSIFICATION: ORDINARY
2. AVAILABLE AMBIENT TEMPERATURE RANGES:  
-50°F - 104°F, -30°F - 104°F, 32°F - 104°F, 32°F - 120°F
3. RATINGS: CONFIGURABLE WITH TYPE 4/4X JUNCTION BOX  
FOR INDOOR OR OUTDOOR LOCATION

THE ATTACHED DESIGNS ARE CONSIDERED TRADE SECRETS AND POTENTIALLY PATENTABLE. IN ACCORDANCE WITH CONFIDENTIALITY AND NON-DISCLOSURE AGREEMENT, THESE DESIGNS IN ACTUAL OR CONCEPTUAL FORMS CANNOT BE DISCLOSED, REPRODUCED OR USED WITHOUT HAWAII EXPRESS WRITTEN CONSENT.

| FUSE CHART   |      |      |      |      |      |      |      |
|--------------|------|------|------|------|------|------|------|
| FUSE TYPE    | JKS  | KLKR | KLDR | KLDR | KLDR | KLDR | KLDR |
| 600V 3PH     | 30A  | 30A  | 5A   | 5A   | 2A   | 5.6A |      |
| 480V 3PH     | 30A  | 30A  | 6A   | 6A   | 2.8A | 5.6A |      |
| 240V 3PH     | 30A  | 60A  | 12A  | 12A  | 5.6A | 5.6A |      |
| 208V 3PH     | 30A  | 60A  | 15A  | 15A  | 6A   | 5.6A |      |
| 240V 1PH     | 60A  | 25A  | 20A  | 20A  | 5.6A | 5.6A |      |
| 208V 1PH     | 60A  | 25A  | 25A  | 25A  | 6A   | 5.6A |      |
| JDS MOUNTING | 100A |      |      |      |      |      |      |

