



# INSTALLATION, OPERATION & MAINTENANCE INSTRUCTIONS

1455 Kleppe Lane ♦ Sparks, NV 89431-6467 ♦ (775) 359-4712 ♦ Fax (775) 359-7424  
E-mail: [haws@hawsco.com](mailto:haws@hawsco.com) ♦ website: [www.hawsco.com](http://www.hawsco.com)

No. 0580001129 (2)

## Model 1922 Wall Mounted Bottle Filler w/ Drip Tray Drain

**NOTE TO INSTALLER:** Please leave this information with the Maintenance Department.

### LIMITED WARRANTY

HAWS warrants that this specific product is guaranteed against defective material or poor workmanship for a period of **one year from date of shipment**. HAWS liability under this warranty shall be discharged by furnishing without charge F.O.B. HAWS Factory any goods, or part thereof, which shall appear to the Company upon inspection to be of defective material or not of first class workmanship, provided that claim is made in writing to Haws within a reasonable period after receipt of the product. Where claims for defects are made, the defective part or parts shall be delivered to the Company, prepaid, for inspection. HAWS will not be liable for the cost of repairs, alterations or replacements, or for any expense connected therewith made by the owner or his agents, except upon written authority from HAWS, Sparks, Nevada. HAWS will not be liable for any damages caused by defective materials or poor workmanship, except for replacements, as provided above. Buyer agrees that HAWS shall not be liable for general, special, or consequential damages claimed to arise under the contract of sale. The drinking fountain manufactured by HAWS is warranted to function if installation and maintenance instructions provided are adhered to. The units also must be used for the purpose for which they were intended.

**NO OTHER WARRANTIES EXPRESSED OR IMPLIED ARE AUTHORIZED,  
PROVIDED OR GIVEN BY HAWS.**

**SHOULD YOU EXPERIENCE DIFFICULTY WITH THE INSTALLATION OF THIS  
MODEL PLEASE CALL:**

**TECHNICAL SUPPORT: 1-800-766-5612**

**FOR CUSTOMER SERVICE: 1-888-640-4297**

**REQUIRED TOOLS:** Tubing cutter, 3/32" and 5/32" hex key set, adjustable wrench or socket.

**LOCATION OF UNIT:** The Model 1922 bottle filler water dispenser with drain can be installed in various indoor applications. When installing this unit, local, state, or federal codes should be adhered to.

**SUPPLY LINE:** The minimum recommended line size is 3/8" O.D. copper or plastic tubing with 30-90 psi (2-6 ATM) pressure. Where sediment or mineral content is a problem, an inlet filter is recommended.

**PLUMBING CONNECTIONS:** Inlet is 3/8" O.D. push-in type fitting. Drain is a 1-1/4" metal slip fit connection. Where required by code, an in wall P-trap should be installed.

**MAINTENANCE:** Periodically clean the strainer. Refer to 5874 Series Valve Manual for more information.

## INSTALLATION PROCEDURE

### GENERAL NOTES:

1. For all plastic push-in type fitting connections, only connect NSF-61 copper or plastic tubing. Stainless steel or glass tubing is not recommended. The following assembly instructions must be followed to ensure a watertight connection:
  - a. Cut tubing square and clean.
  - b. Mark from end of tube the length of insertion (See table below).
  - c. Push tube into the fitting until it bottoms out.
  - d. To remove, depress collet and pull tubing out.

| Tube Sizes | O.D. Tolerance | Insertion Depth |
|------------|----------------|-----------------|
| 3/8"       | ±.005"         | 3/4"            |

### CLEANING INSTRUCTIONS FOR HI-POLISHED STAINLESS PRODUCTS:

Haws' recommended cleaning procedure for hi-polished stainless products is as follows: Use a mild detergent or soap and water for removing stains and fingerprints or use a clean cloth with window cleaner.

### BOTTLE FILLER AND DRAIN BRACKET:

If installing the bottle filler and drain in new construction, it is recommended to use Model 6700 Mounting Plate. Follow the installation instructions supplied with the 6700 for mounting dimensions. Reference Page 6 of this document for bottle filler button and drain heights. (Note: Mounting Hardware is only supplied with the 6700 Series Mounting Plates and not the Bottle Filler.)

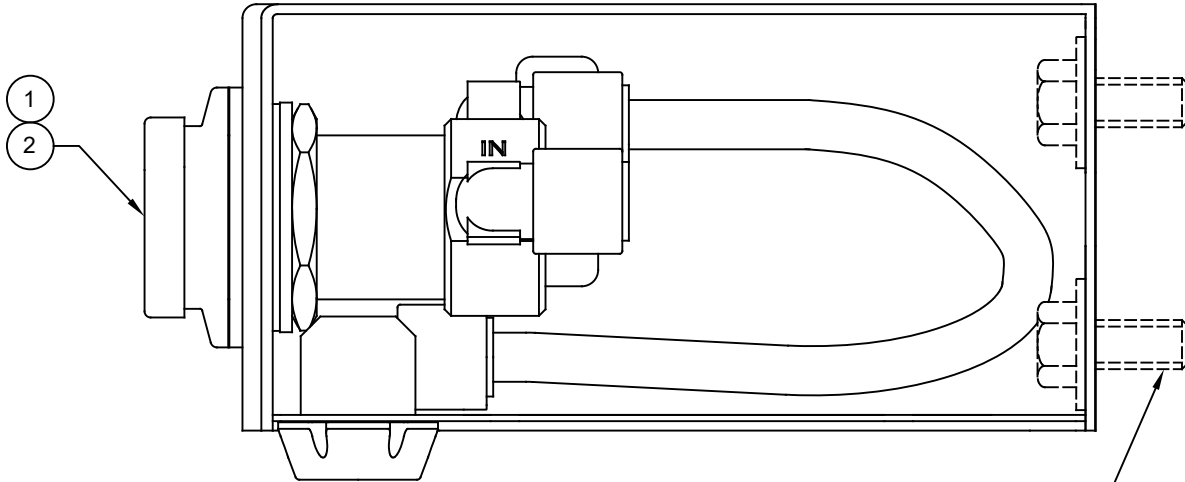
If installing as a retrofit in old construction, it is recommended to use the Model 6700 Mounting Plate behind the finished wall. If that is not possible, it is recommended to install wood stud cross-braces behind the wall and mount the bottle filler and drain directly to the wood braces. If that is not possible, Model 6700R Retrofit Plate may be used. Follow the installation instructions supplied with the 6700R. (Note: Mounting Hardware is only supplied with the 6700 Series Mounting Plates and not the Bottle Filler.)

| <b>TROUBLESHOOTING</b>                 |   |
|--|---|
| <b>PROBLEM</b>                         | <b>REPAIR CHECKLIST</b>   |
| 1. Insufficient water flow.            | 1a. Check that any inlet screwdriver stop valve (not supplied) is wide open. Turn counterclockwise.<br>b. Verify minimum 30 psi flowing supply pressure.<br>c. Clean strainer. See 5874 Series Valve Manual.<br>d. Adjust valve to increase flow. Use front adjust screw or see 5874 Series Valve Manual.<br>e. Make sure nozzle is free of debris. |
| 2. Excessive water flow.               | 2a. Adjust valve to decrease flow. Use front adjust screw or see 5874 Series Valve Manual.  |
| 3. Water flow is crooked or splatters. | 3a. Make sure nozzle is free of debris.<br>b. Verify that bottle filler is installed level and straight.<br>c. Adjust valve to decrease flow. Use front adjust screw or see 5874 Series Valve Manual.   |

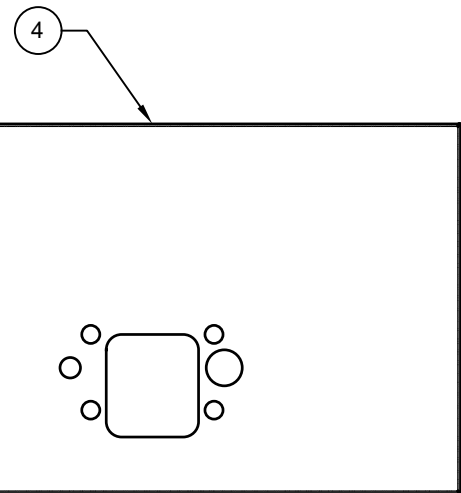
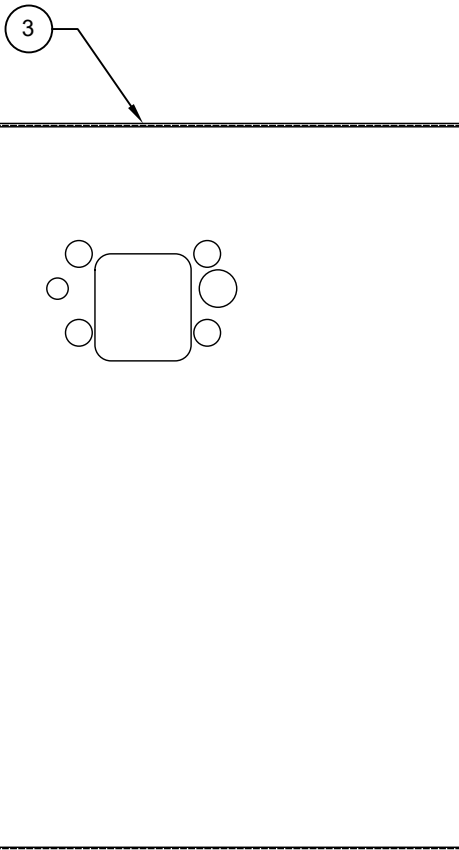
For more information about Haws products, see our website: [www.hawsc.com](http://www.hawsc.com)

| ITEM | DESCRIPTION                  | PART NO.  |
|------|------------------------------|-----------|
| 1    | VALVE REPAIR KIT HF          | VRK5874HF |
| 2    | PUSH BUTTON ASSY             | PBA6      |
| 3    | BACK PANEL FOR BOTTLE FILLER | BP15      |
| 4    | BACK PANEL FOR DRAIN         | BP6       |


# PARTS BREAKDOWN

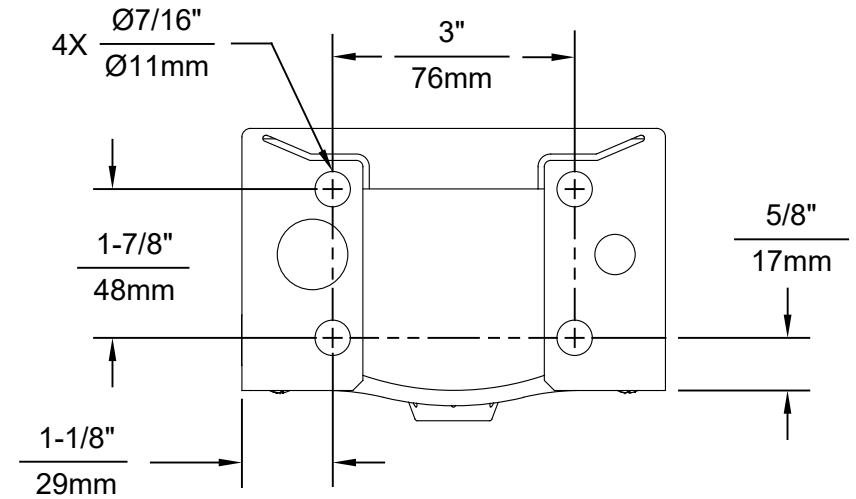
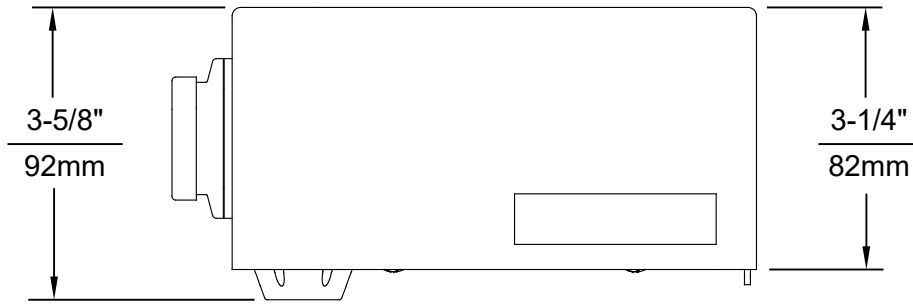


3/8"-16 UNC MOUNTING HARDWARE  
NOT SUPPLIED

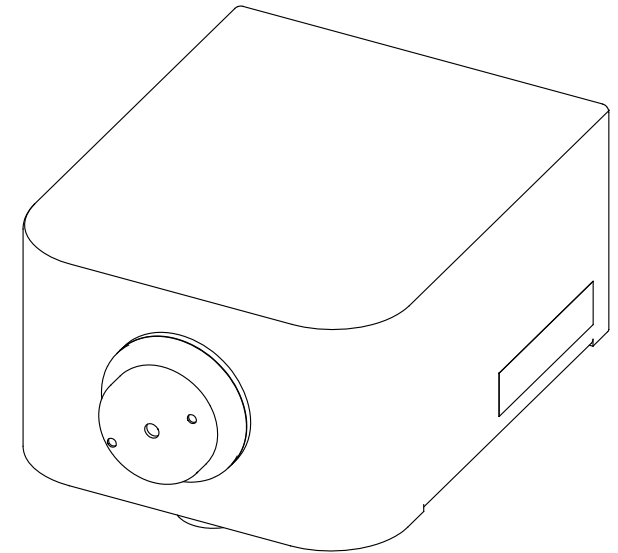
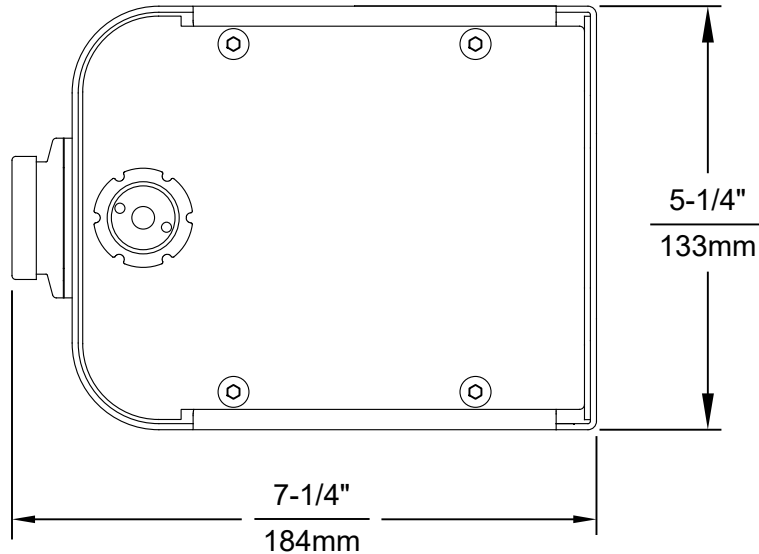


WHEN ORDERING PARTS PLEASE SPECIFY MODEL NUMBER.

|   |             |                               |               |   |  |
|---|-------------|-------------------------------|---------------|---|--|
|  |             | <b>Haws</b> <sup>®</sup>      |               | 1455 KLEPPE LANE<br>SPARKS, NEVADA 89431<br>(775) 359-4712 FAX (775) 359-7424<br>E-MAIL: HAWS@HAWS.CO.COM<br>WEBSITE: WWW.HAWS.CO.COM |  |
|   |             |                               |               | ECN NO. 5607<br>ECN: 5660   | REVISED PER FV<br>DATE 10/29/20<br>CHKD DP |
| APPROVED FV<br>DATE 03/31/21  | SCALE: 1:14 | DRAWING TYPE: PARTS BREAKDOWN | REVISION<br>2 | SIZE: A SHEET 1 OF 1  |  |




MOUNTING HOLE LOCATIONS



NOTES:

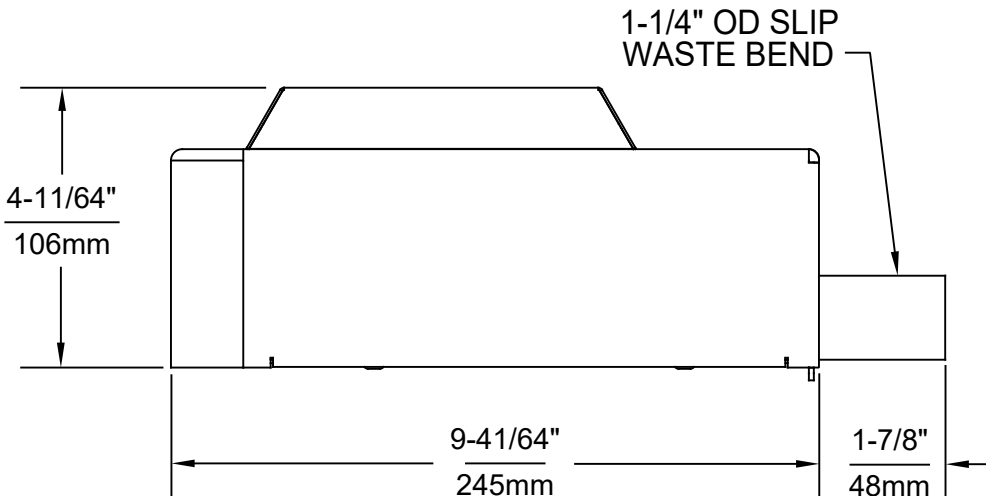
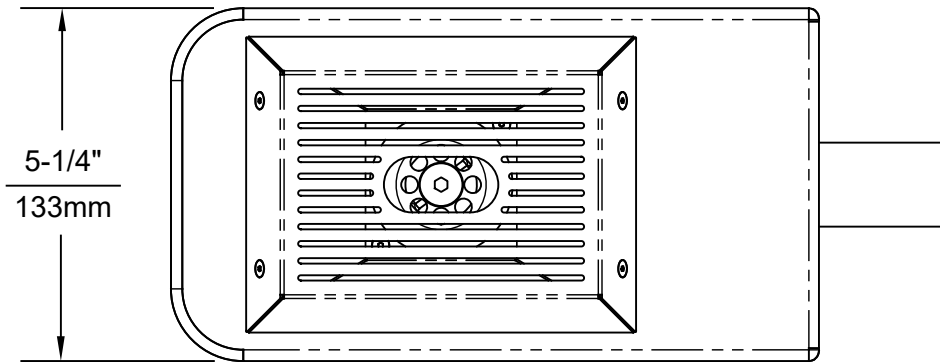
1. SEE SEPARATE INSTALLATION DRAWINGS FOR MOUNTING PLATES AND BACK PANELS.
2. WHEN INSTALLING THIS UNIT, LOCAL, STATE OR FEDERAL CODES SHOULD BE ADHERED TO FOR INSTALLATION LOCATIONS, WASTE & SUPPLY REQUIREMENTS OTHER THAN SHOWN.

BOTTLE FILLER DETAIL SHOWN  
WASTE DRAIN TRAY DETAIL ON SHEET 2

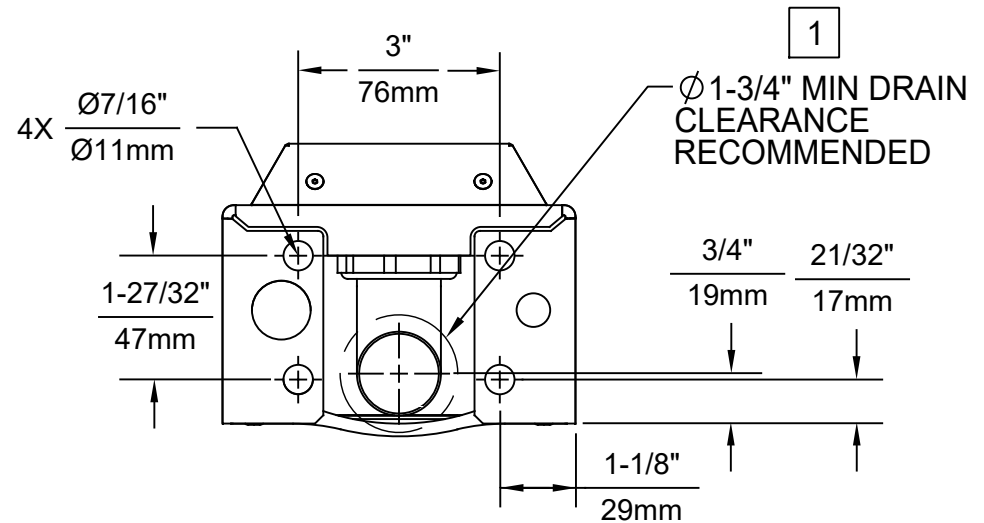
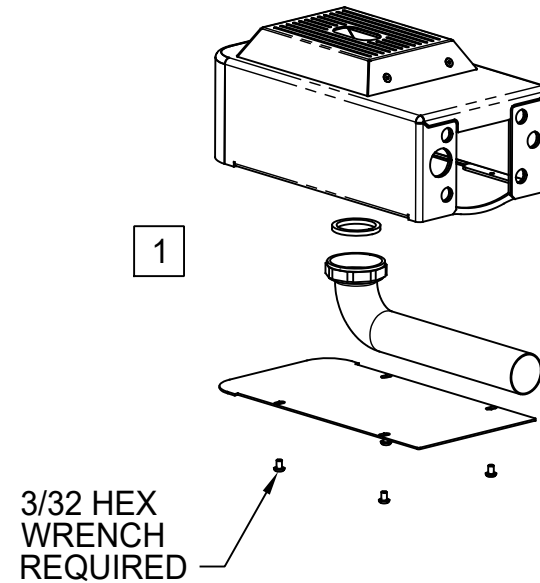
|   |                          |              |               |   |               |
|---|--------------------------|--------------|---------------|---|---------------|
|  |                          | <b>Haws®</b> |               | 1455 KLEPPE LANE<br>SPARKS, NEVADA 89431<br>(775) 359-4712 FAX (775) 359-7424<br>E-MAIL: HAWS@HAWSCO.COM<br>WEBSITE: WWW.HAWSCO.COM |               |
| ECN NO.<br>5607   | REVISED PER<br>ECN: 5660 | BY:<br>FV    | MODEL(S)      |   | PART NUMBER   |
| DRAWN:<br>DP  | DATE:<br>11/02/20        | CHK'D:<br>DP | 1922          |   | 0580001129.D  |
| APPROVED:<br>FV   | DATE:<br>03/31/21        | SCALE: N/A   | DRAWING TYPE: | INSTALLATION  | REVISION<br>2 |
|   |                          |              | SIZE: A       | SHEET 1 OF 3  |               |

NOTES:

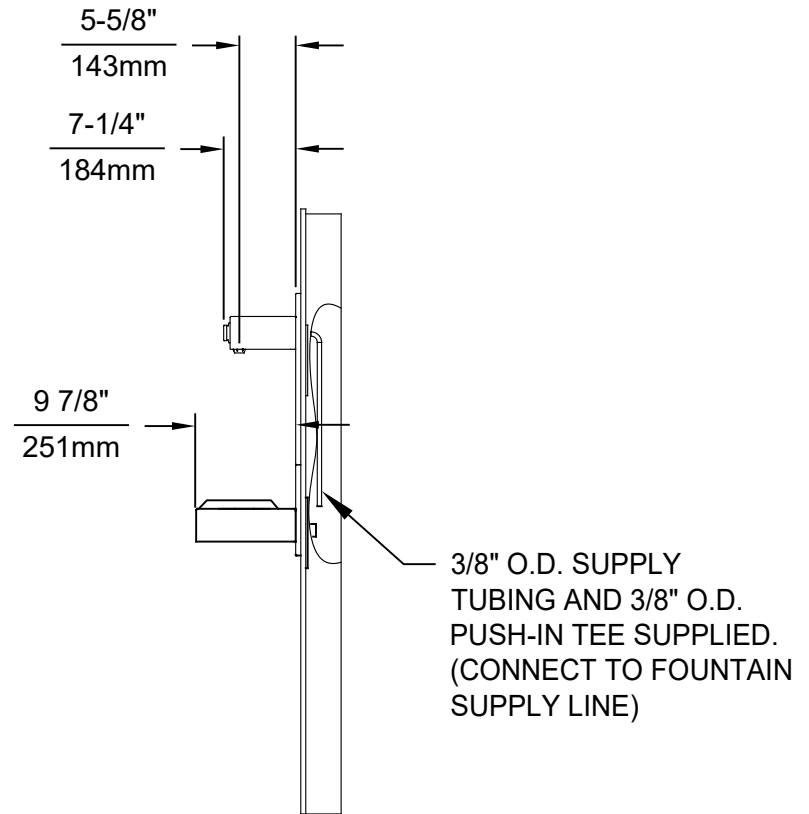
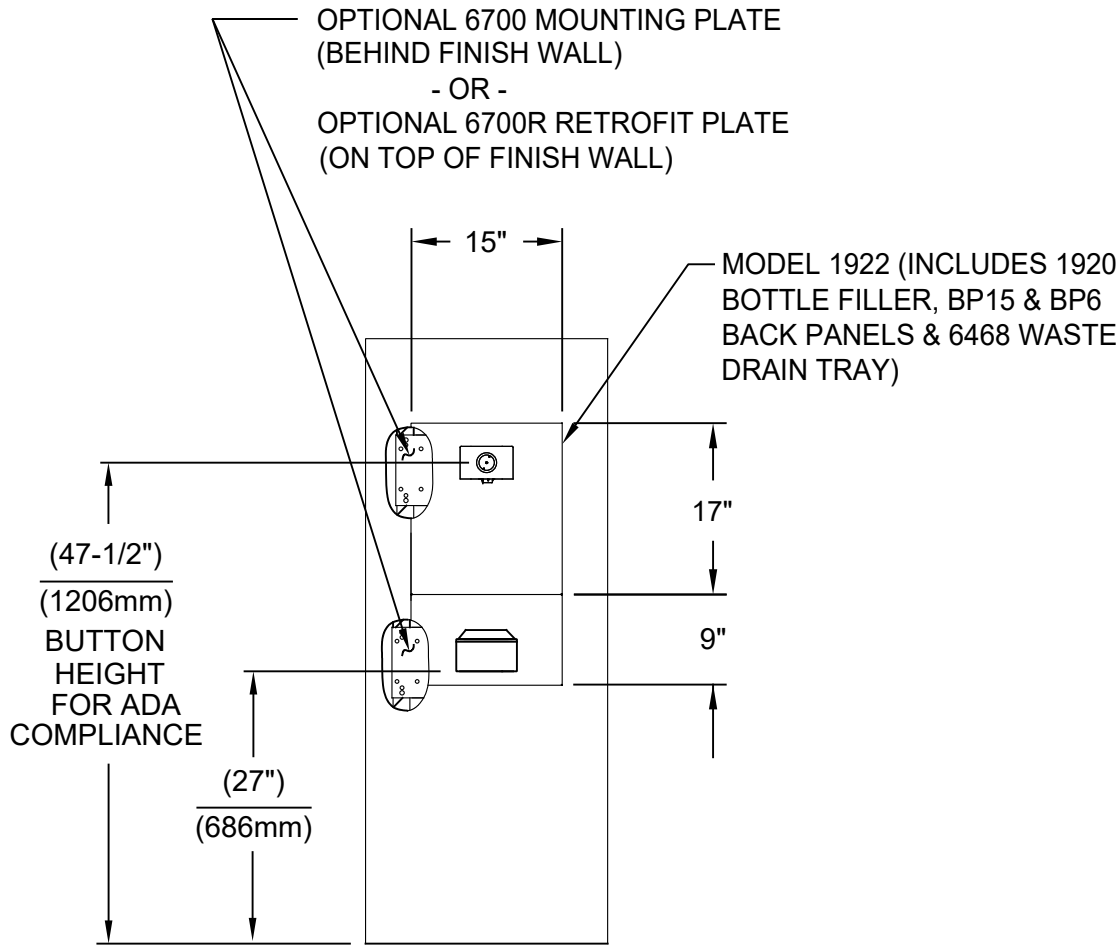
- 1 ASSEMBLE DRAIN WITH NUT AND WASHER AS SHOWN. AFTER INSTALLATION, CAREFULLY SEAL WALL AROUND DRAIN.
2. WHEN INSTALLING THIS UNIT, LOCAL, STATE, OR FEDERAL CODES SHOULD BE ADHERED TO. INSTALL A TRAP IN THE WASTE LINE OF WASTE DRIP TRAY (SHOWN) AND A SCREWDRIVER STOP IN THE SUPPLY LINE OF BOTTLE FILLER UNIT (SHOWN ON SHEET 1) IF REQUIRED.
3. 3/8" DIAMETER BOLTS OR SCREWS (NOT SUPPLIED) ARE RECOMMENDED.



WASTE DRAIN TRAY DETAIL SHOWN  
BOTTLE FILLER DETAIL ON SHEET 1




|                            |                          |   |                             |
|----------------------------|--------------------------|---|-----------------------------|
|                            |                          | 1455 KLEPPE LANE<br>SPARKS, NEVADA 89431<br>(775) 359-4712 FAX (775) 359-7424<br>E-MAIL: HAWS@HAWS.CO.COM<br>WEBSITE: WWW.HAWS.CO.COM |                             |
| ECN NO.<br>5607            | REVISED PER<br>ECN: 5660 | BY:<br>FV   | MODEL(S)<br>1922            |
| DRAWN:<br>DP               | DATE:<br>11/02/20        | CHK'D:<br>DP  | PART NUMBER<br>0580001129.D |
| APPROVED:<br>FV            | DATE:<br>03/31/21        | SCALE: N/A  | REVISION<br>2               |
| DRAWING TYPE: INSTALLATION |                          | SIZE: A   | SHEET 2 OF 3                |



**AMERICANS WITH DISABILITIES ACT (ADA) INSTALLATION HEIGHTS**

1. SEE SEPARATE INSTALLATION DRAWINGS FOR MOUNTING PLATES AND BACK PANELS.
2. WHEN INSTALLING THIS UNIT, LOCAL, STATE OR FEDERAL CODES SHOULD BE ADHERED TO FOR INSTALLATION LOCATIONS, WASTE & SUPPLY REQUIREMENTS OTHER THAN SHOWN.

|   |  |   |  |
|---|--|---|--|
|  |  | 1455 KLEPPE LANE<br>SPARKS, NEVADA 89431<br>(775) 359-4712 FAX (775) 359-7424<br>E-MAIL: HAWS@HAWS.CO.COM<br>WEBSITE: WWW.HAWS.CO.COM |  |
|   |  | ECN NO. 5607<br>DRAWN: DP<br>APPROVED: FV   | REVISED PER: ECN: 5660<br>DATE: 11/02/20<br>DATE: 03/31/21 |
|   |  | PART NUMBER 0580001129.D<br>REVISION 2  | SIZE: A SHEET 3 OF 3                                       |