

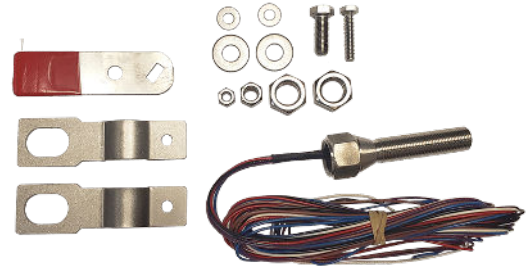
FEATURES & BENEFITS

ALTERNATIVE

Mounting the proximity switch to the ball valve is an alternative to using a flow switch plumbed in to the water supply.

OPTIONS

For more information, visit www.hawesco.com or call (888) 640-4297.



SPECIFICATIONS

The Haws SP152D is a double pole proximity switch designed to mount to a Haws emergency shower or eyewash. Mounted to the ball valve, this switch sends an electrical signal to an alarm and control board when the emergency fixture is activated. This switch kit includes the electrical sensor, magnet and mounting hardware. QPS-C-US Certified



APPLICATIONS

Speci cally, this proximity switch can be used for most Haws emergency eyewashes or drench showers (not meant for freeze resistant models).

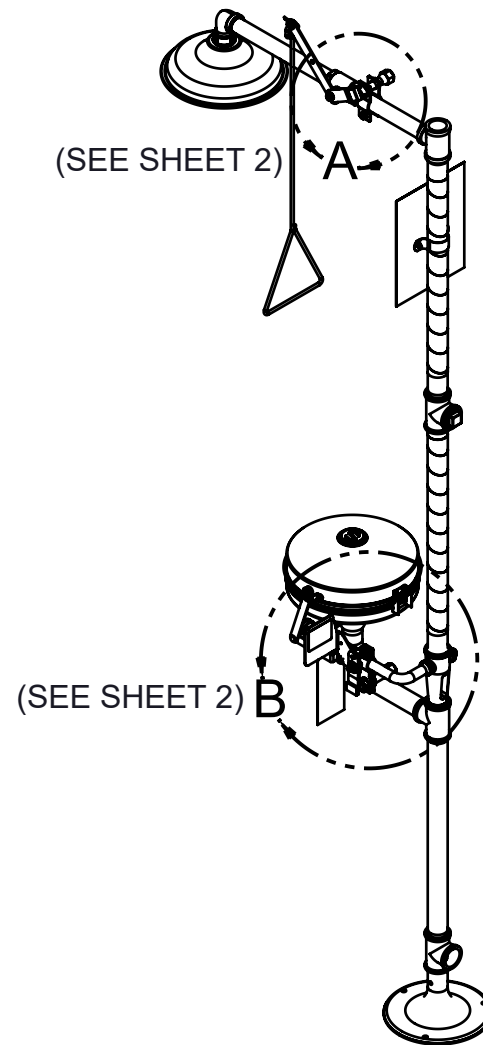
NOTES:

1. APPLY SMALL AMOUNT OF THREAD LOCKER (LOCTITE #222MS - SUPPLIED) TO MALE THREADS, WHERE INDICATED.
2. APPLY SMALL AMOUNT OF LUBRICANT (DOW CORNING #111 - SUPPLIED) TO PROXIMITY SWITCH (ITEM 1) THREADS, PRIOR TO INSTALLATION (PREVENTS THREAD SEIZING).
3. THESE PROXIMITY SWITCHES ARE QPS CERTIFIED AS ACCESSORIES FOR USE IN HAWS MANUFACTURED ASSEMBLIES.
4. PROXIMITY SWITCH INSTALLATION LOCATIONS:
 - SINGLE PROXIMITY SWITCH MODELS SP152S AND SP152D CAN BE INSTALLED AT EITHER:
 - A) A SHOWER HEAD ONLY (SEE SHEET 2 OF 5, DETAIL A), OR
 - B) AN EYE/FACE WASH ONLY (SEE SHEET 2 OF 5, DETAIL B AND SHEET 3 OF 5)
 - DOUBLE PROXIMITY SWITCH MODELS SP152SC AND SP152DC CAN BE INSTALLED AT:
 - A) BOTH A SHOWER HEAD AND EYE/FACE WASH ON COMBINATION SAFETY SHOWER UNITS (SEE SHEET 2 OF 5, DETAILS A AND B AND SHEET 3 OF 5).
5. PROXIMITY SWITCH KIT BRACKETS WILL FIT 1/2" - 1" IPS PIPE SIZES. SEE HAWS MODEL COMPATIBILITY TABLE ON PAGE 3 OF HAWS SP152 SERIES OPERATION AND MAINTENANCE MANUAL, FOR MODELS THAT THESE KITS WILL FIT ON.




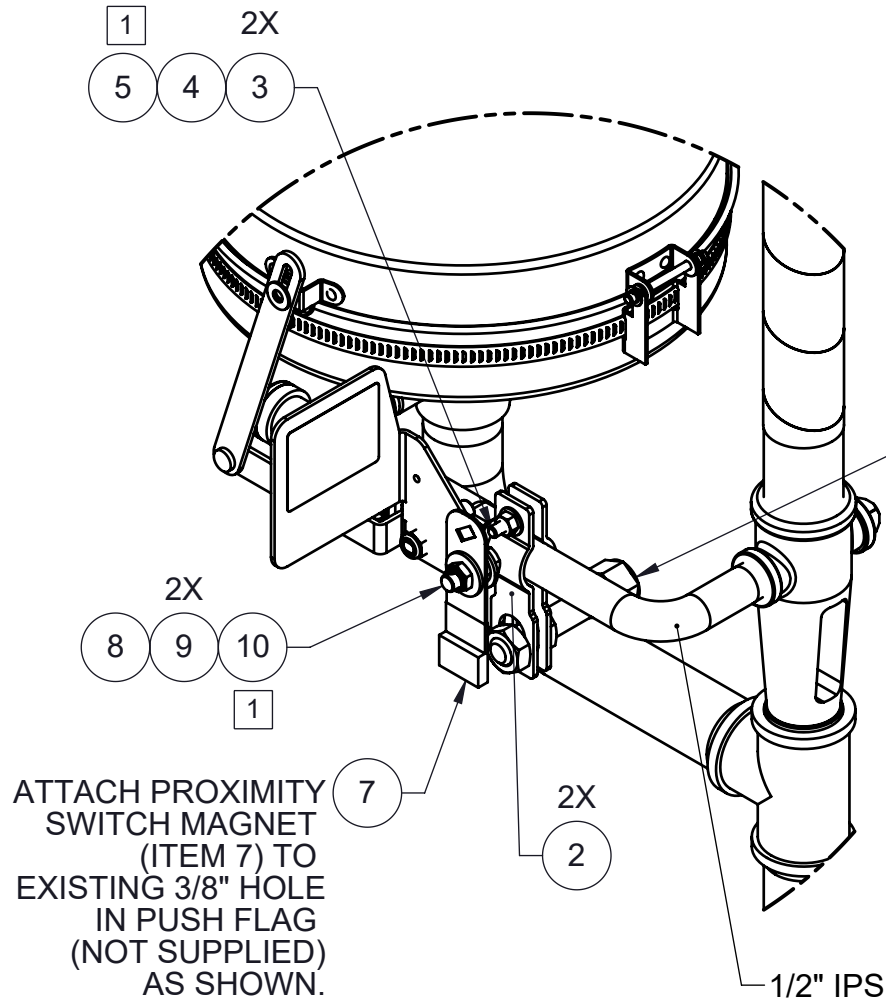
PARTS BREAKDOWN					
MODEL NUMBER		SP152S	SP152D	SP152SC	SP152DC
ITEM NO.	DESCRIPTION	QTY.	QTY.	QTY.	QTY.
1	PROXIMITY SWITCH, SPDT	1	--	2	--
	PROXIMTY SWITCH, DPDT	--	1	--	2
2	STRAP, PROXIMITY SWITCH	2	2	4	4
3	WASHER, FLAT, 1/4	2	2	4	4
4	NUT, 1/4-20	1	1	2	2
5	SCREW, 1/4-20 X 1-1/4	1	1	2	2
6	JAM NUT, 5/8-18, PROXIMITY SWITCH	2	2	4	4
7	MAGNET, PROXIMITY SWITCH	1	1	2	2
8	NUT, 3/8-24	1	1	1	1
9	WASHER, FLAT, 3/8	2	2	2	2
10	SCREW, 3/8-24 X 1 W/HOLE	1	1	1	1
N/A	LOCTITE THREAD LOCKER 222MS (0003244389)	1	1	1	1
N/A	DOW CORNING LUBRICANT #111 (0003247000)	1	1	1	1

SEE SHEET 4 OF 5 FOR ELECTRICAL WIRING OF PROXIMITY SWITCH(ES)



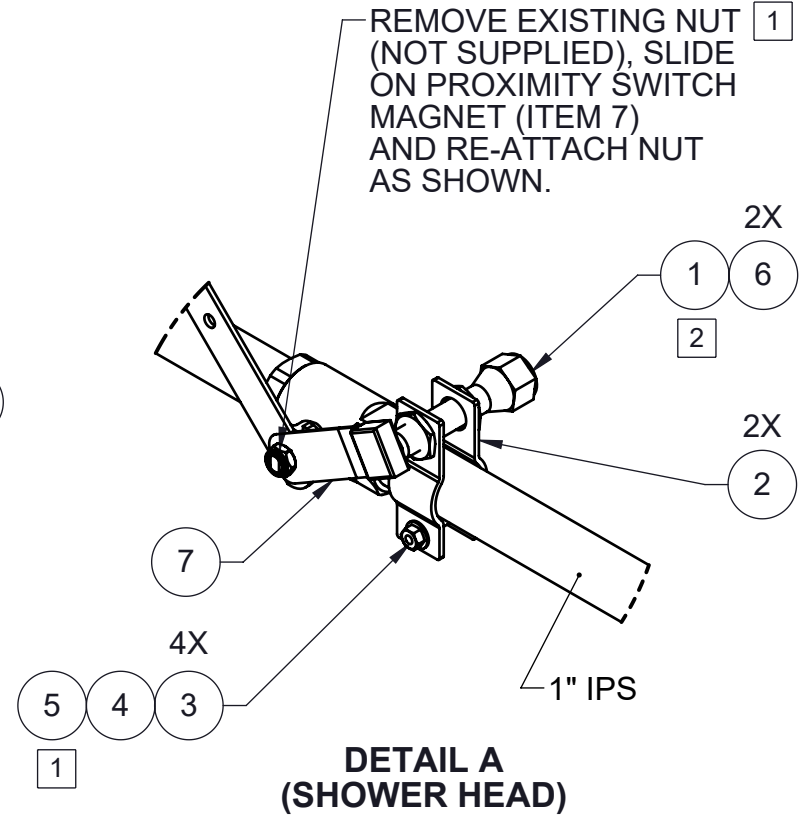
**HAWS 8300-8309
SHOWN FOR REFERENCE
(NOT SUPPLIED)**

 Haws® Since 1906		1455 KLEPPE LANE SPARKS, NEVADA 89431 (775) 359-4712 FAX (775) 359-7424 E-MAIL: HAWS@HAWS.CO.COM WEBSITE: WWW.HAWS.CO.COM	
		MODEL(S) SP152S/SP152D/SP152SC/SP152DC/SP155PS	
ECN: 5551	REV. ECN: 5973	BY: FV	PART NUMBER: 0510001049.D
DRAWN: LF	DATE: 07/30/20	CHKD: KM	REVISION: 4
APPROVED: FV	DATE: 11/03/23	SCALE: 1:16	DRAWING TYPE: INSTALLATION
SIZE: A		SHEET 1 OF 5	



**DETAIL B
(EYE/FACE WASH)**

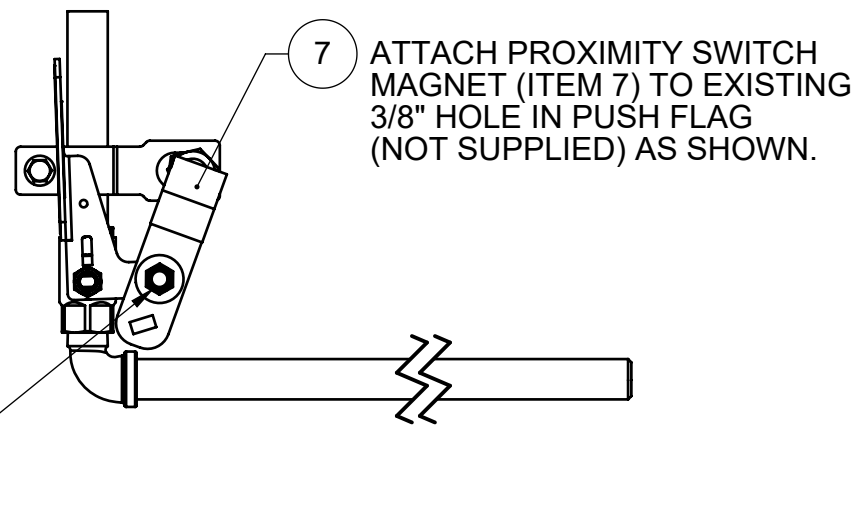
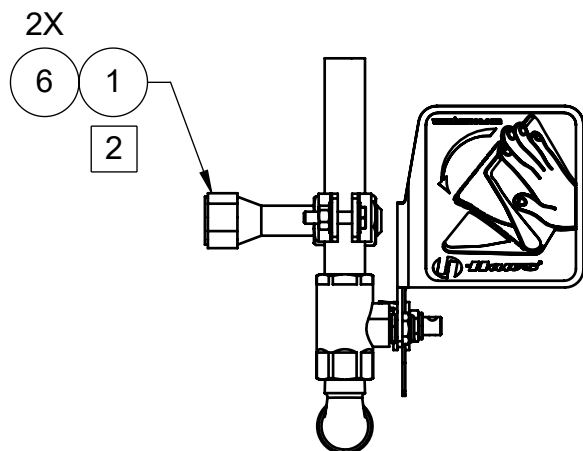
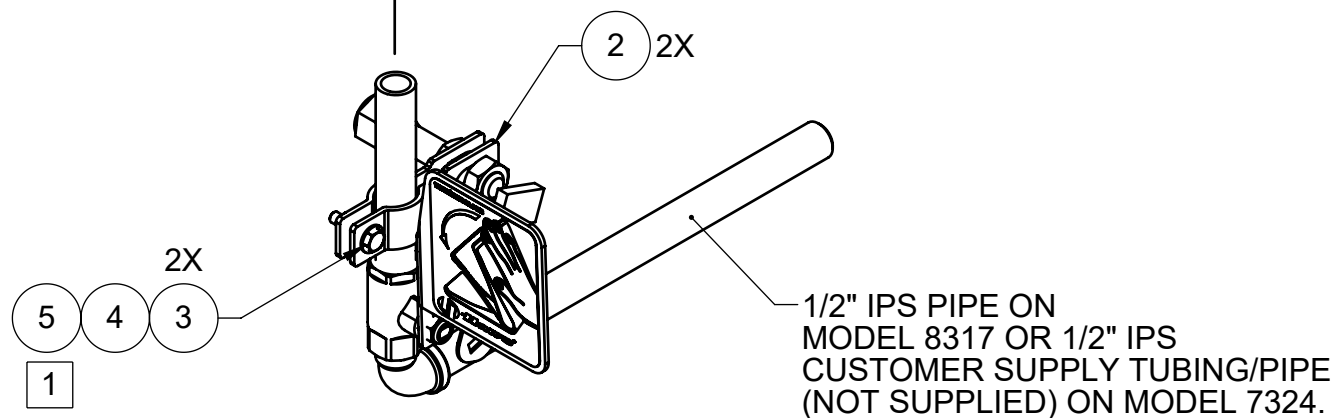
SEE SHEET 3 OF 5 (PAGE 6) FOR VERTICAL ORIENTATION OF PROXIMITY SWITCH ON EYE/FACE WASH FOR MODELS 7324 OR 8317.



**PROXIMITY SWITCH LOCATION DETAILS
(SWITCHES ARE SHOWN ON A COMBO SHOWER FOR REFERENCE. CERTAIN SHOWER/EYEWASH MODELS MAY REQUIRE THAT THE BRACKETS BE MOUNTED TO CUSTOMER SUPPLY PIPING)**

 Haws® <i>Since 1906</i>				1455 KLEPPE LANE SPARKS, NEVADA 89431 (775) 359-4712 FAX (775) 359-7424 E-MAIL: HAWS@HAWS.CO.COM WEBSITE: WWW.HAWS.CO.COM			
ECN: 5551	REV. ECN: 5973	BY: FV	MODEL(S) SP152S/SP152D/SP152SC/SP152DC/SP155PS			PART NUMBER 0510001049.D	
DRAWN: LF	DATE: 07/30/20	CHK'D: KM				REVISION 4	
APPROVED: FV	DATE: 11/03/23	SCALE: 1:20		DRAWING TYPE: INSTALLATION		SIZE: A	SHEET 2 OF 5

TO
EYE/FACE WASH



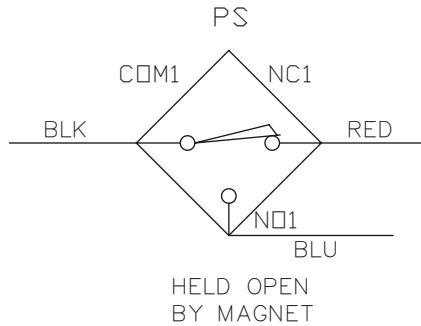
**VERTICAL ORIENTATION
OF PROXIMITY SWITCH ON EYE/FACE WASH
FOR MODELS 7324 OR 8317 SHOWN.
SEE PREVIOUS SHEET (2 OF 5) FOR ALL OTHER INSTALLATIONS.**

 Haws® Since 1906		1455 KLEPPE LANE SPARKS, NEVADA 89431 (775) 359-4712 FAX (775) 359-7424 E-MAIL: HAWS@HAWS.CO.COM WEBSITE: WWW.HAWS.CO.COM	
		ECN: 5551 REV. ECN: 5973 BY: FV DRAWN: LF DATE: 07/30/20 CHKD: KM APPROVED: FV DATE: 11/03/23	
MODEL(S) SP152S/SP152D/SP152SC/SP152DC/SP155PS		PART NUMBER 0510001049.D REVISION 4	
SCALE: 1/4" = 1" DRAWING TYPE: INSTALLATION		SIZE: A SHEET 3 OF 5	

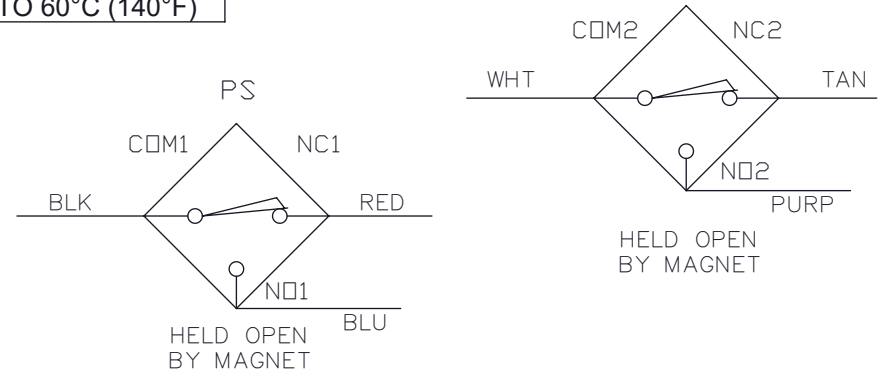
ALL ELECTRICAL WORK TO BE DONE PER LOCAL CODE

PROXIMITY SWITCHES ARE RATED TO 3 AMPS DC,
VOLTAGE 0-120 VAC or 0-28 VDC, 100VA
AMBIENT TEMPERATURE -40°C (-40°F) TO 60°C (140°F)

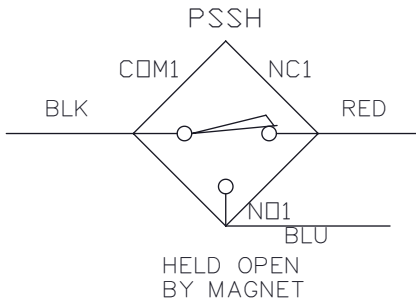
SP152S



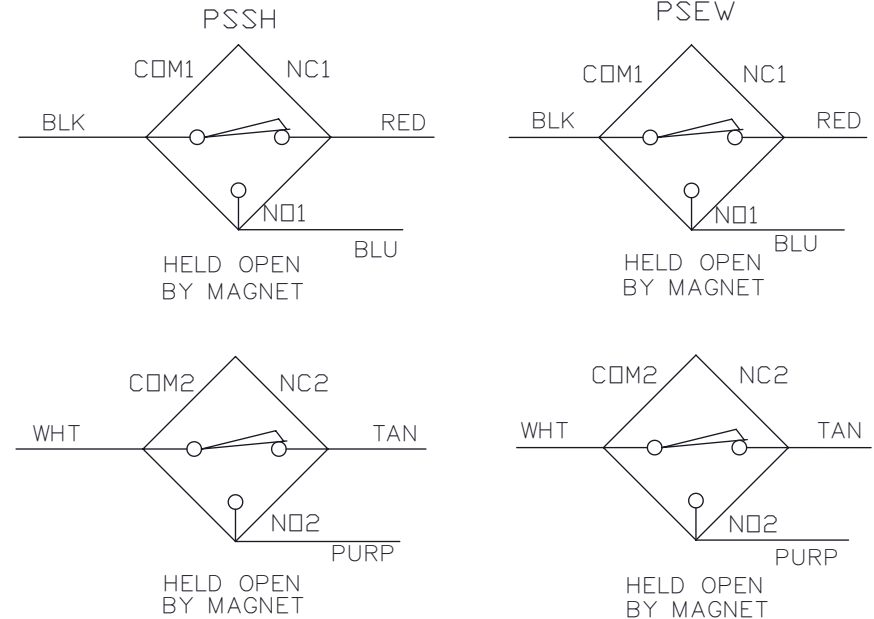
SP152D



SP152SC



SP152DC



ELECTRICAL WIRING OF PROXIMITY SWITCH(ES)

LEGEND:

BLK - BLACK
BLU - BLU
COM - COMMON
PS - PROXIMITY SWITCH
PSSH - PROXIMITY SWITCH, SHOWER
PSEW - PROXIMITY SWITCH, EYEWASH
PURP - PURPLE
NO - NORMALLY OPEN
NC - NORMALLY CLOSED
WHT - WHITE



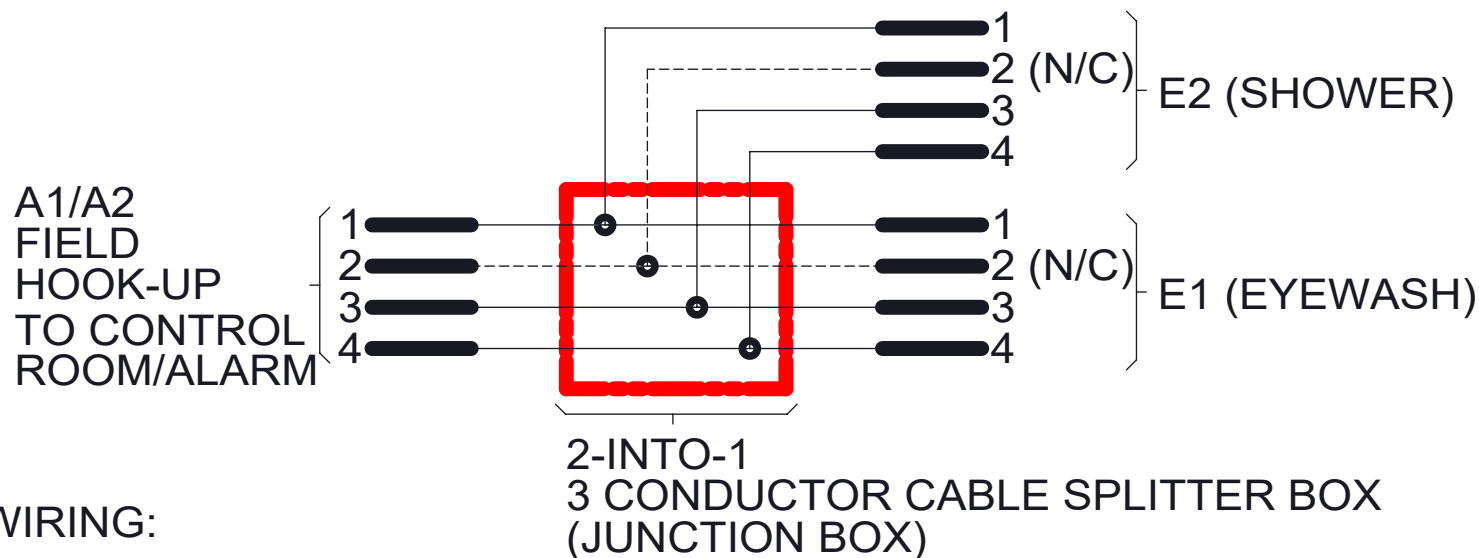
1455 KLEPPE LANE
SPARKS, NEVADA 89431
(775) 359-4712 FAX (775) 359-7424
E-MAIL: HAWS@HAWS.CO.COM
WEBSITE: WWW.HAWS.CO.COM

ECN: 5551	REV. EGN: 5973	BY: FV	MODEL(S) SP152S/SP152D/SP152SC/SP152DC/SP155PS	PART NUMBER 0510001049.D
DRAWN: LF	DATE: 07/30/20	CHKD: KM		REVISION 4
APPROVED: FV	DATE: 11/03/23	SCALE: 1:12	DRAWING TYPE: INSTALLATION	SIZE: A SHEET 4 OF 5

ALL ELECTRICAL INSTALLED PER LOCAL ELECTRICAL CODES.

Proximity Switches rated to 3Amps DC, Voltage 0-28VDC or 0-120VAC 100VA. Ambient Temperature -40° C to +60° C.

WIRING DIAGRAM FOR SP155-PS



WIRING:

- 1 IS TAN OUTPUT N.C.
- 2 IS WHITE OUTPUT N/C (NOT CONNECTED)
- 3 IS BLUE OUTPUT N.O.
- 4 IS BLACK OUTPUT COMMON

 Haws® <i>Since 1906</i>		1455 KLEPPE LANE SPARKS, NEVADA 89431 (775) 359-4712 FAX (775) 359-7424 E-MAIL: HAWS@HAWSO.COM WEBSITE: WWW.HAWSO.COM	
		MODEL(S) SP152S/SP152D/SP152SC/SP152DC/SP155PS	
ECN: 5551	REV. ECN: 5973	BY: FV	PART NUMBER
DRAWN: LF	DATE: 07/30/20	CHKD: KM	0510001049.D
APPROVED: FV	DATE: 11/03/23	SCALE: 1:12	REVISION
		DRAWING TYPE: INSTALLATION	4
		SIZE: A	SHEET 5 OF 5