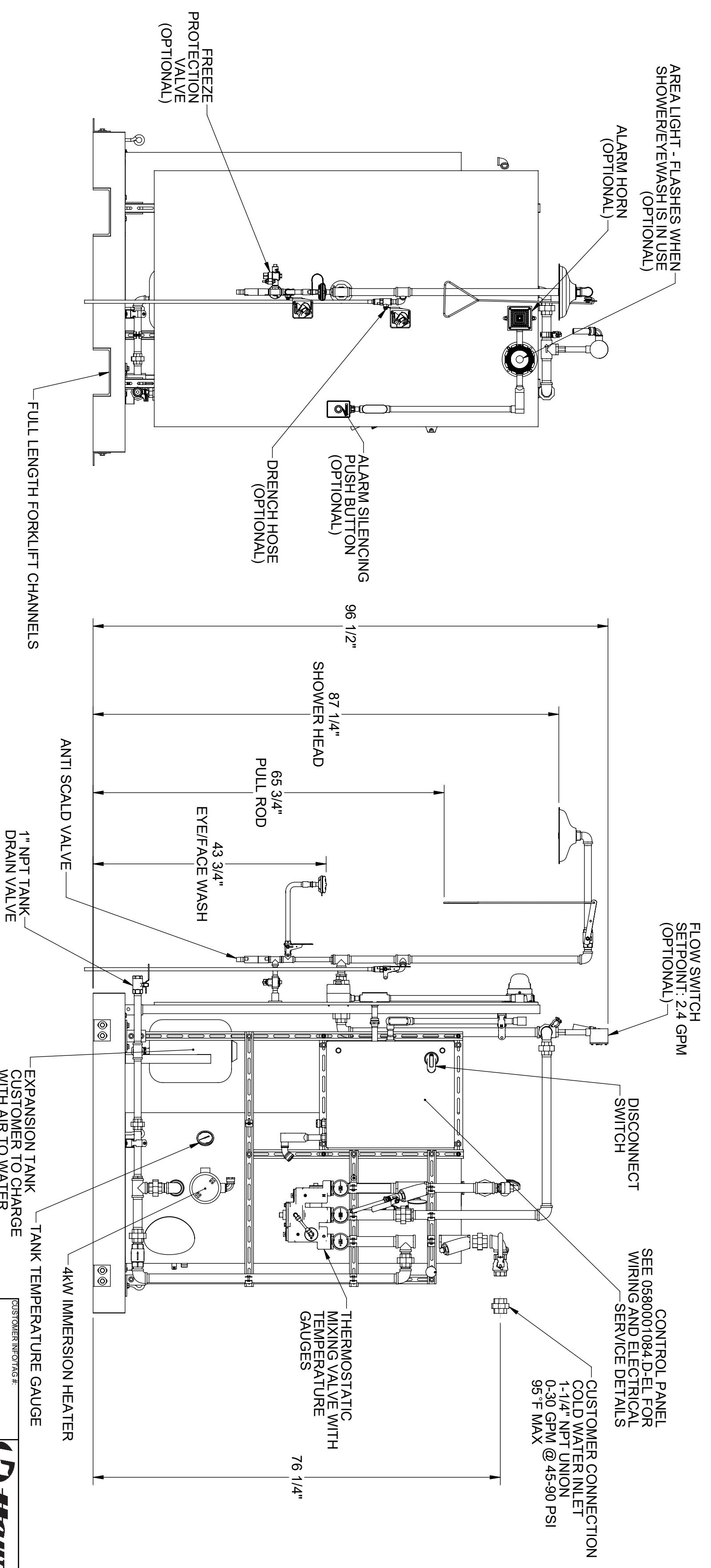
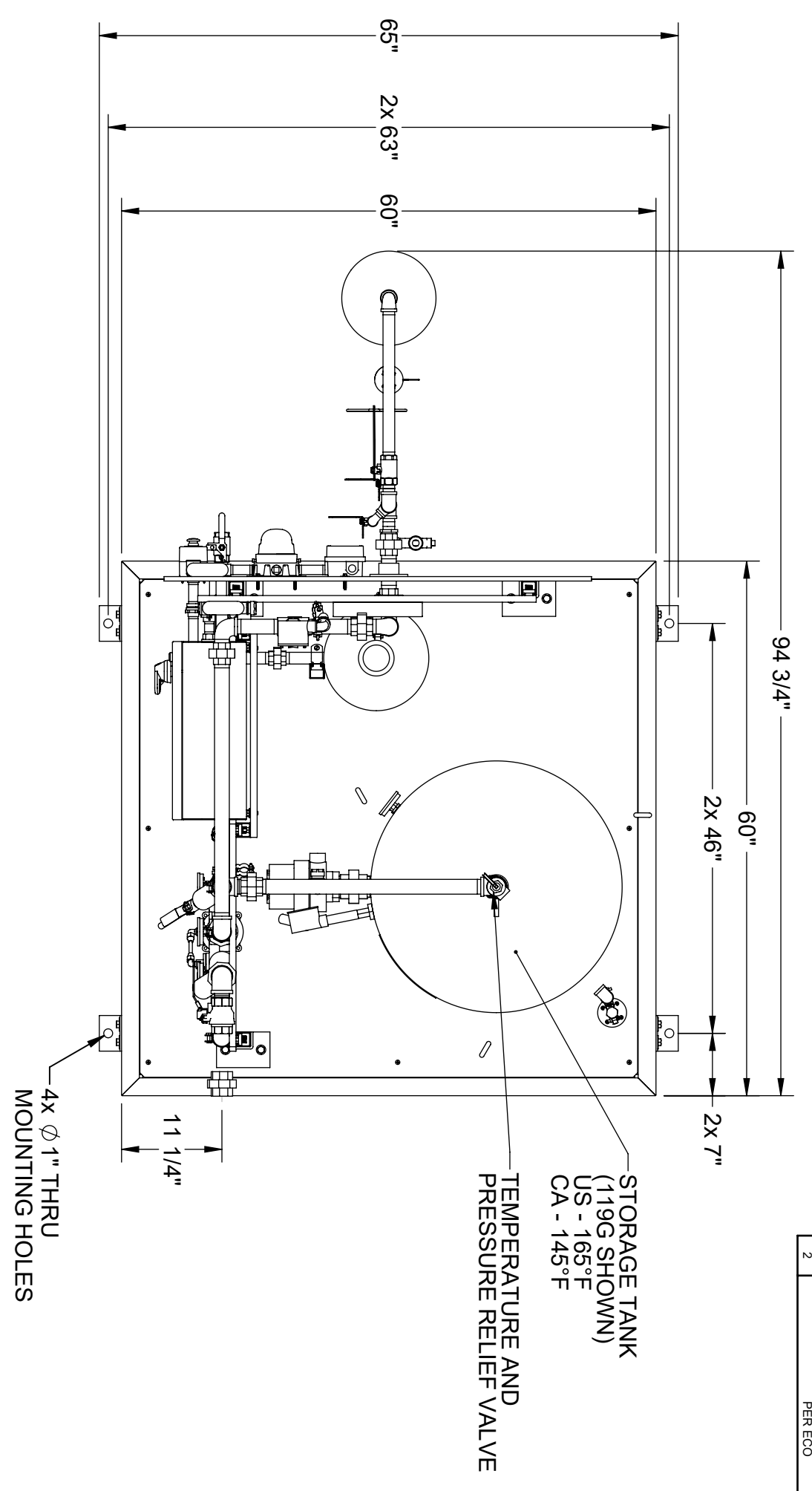


REVISIONS			
REV	DESCRIPTION	ECN	DATE
1	INITIAL RELEASE	5589	9/16/20
2	PER ECO	5624	11/19/2021

- NOTES:
1. DIMENSIONS IN INCHES
  2. ALL TOLERANCES:  $\pm 1/2"$
  3. ESTIMATED WEIGHT (119G TANK):  
DRY: 1200 LBS  
WET: 2200 LBS
  4. AREA CLASSIFICATION: ORDINARY  
AVAILABLE AMBIENT TEMPERATURE RANGES:  
32°F - 104°F, 32°F - 120°F
  5. RATINGS: CONFIGURABLE WITH TYPE 4/4X JUNCTION BOX FOR INDOOR LOCATION
  6. NOT ALL FEATURES ARE STANDARD
  - 7.



THE ATTACHED DESIGNS ARE CONSIDERED TRADE SECRETS AND POTENTIALLY PATENTABLE. IN ACCORDANCE WITH CONFIDENTIALITY AND NON-DISCLOSURE AGREEMENT, THESE DESIGNS IN ACTUAL OR CONCEPTUAL FORMS CANNOT BE DISCLOSED, REPRODUCED OR USED WITHOUT HAWS EXPRESS WRITTEN CONSENT.

JOB NUMBER: IR		DRAWN BY: 072821		CHECKED DATE: 11/23/21		APPROVED BY: IR		APPROVAL DATE: 11/30/21	
TITLE: INDOOR TEMPERED SHOWER AND EYE/FACE WASH SYSTEM		SCALE: 1/1"		PART NO: 0580001084.D-GA		REV: 2		REV: 2	

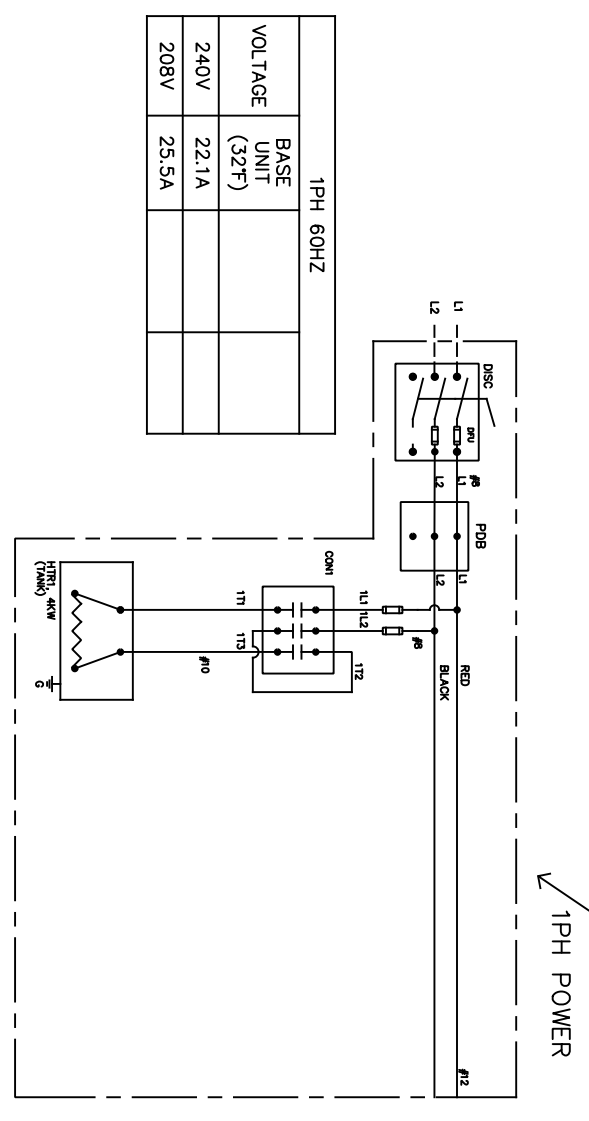
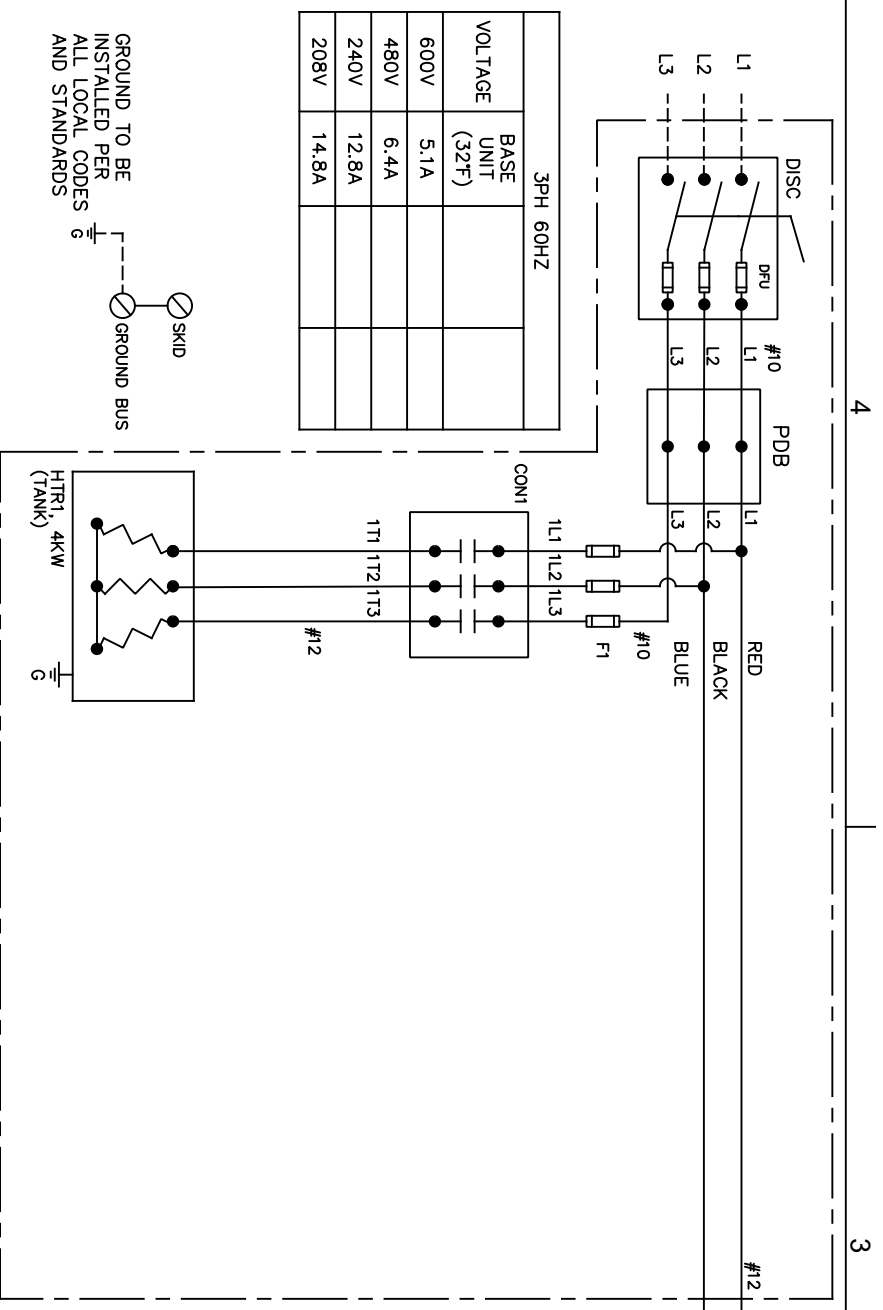


REVISIONS			
REV	DESCRIPTION	ECN	DATE
1		5000	12/01/20
2			

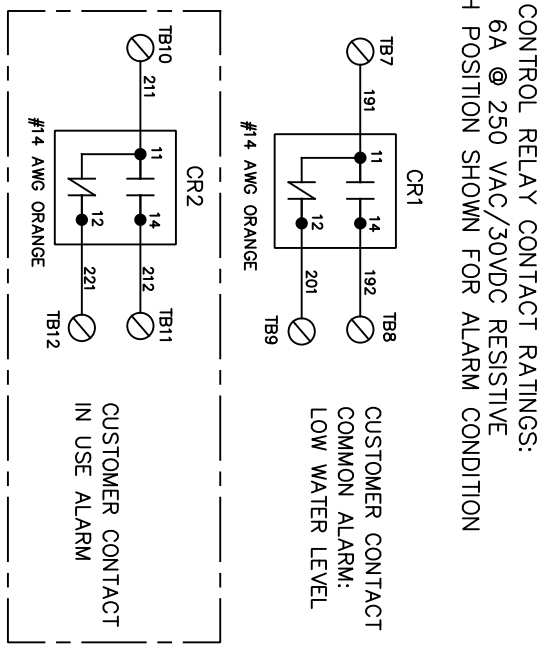
VOLTAGE	DFU	F1	PFU	CFU
208V 1PH	30A	2.5A	3A	2.8A
240V 1PH	30A	2.5A	2.8A	2.8A
208V 3PH	30A	1.5A	3A	2.8A
240V 3PH	30A	1.2A	2.8A	2.8A
480V 3PH	30A	6A	1.4A	2.8A
600V 3PH	30A	5A	1A	2.8A

FUSE TYPE	JKS	KIKR	KIDR	KIDR



DISCONNECT SIZE	TORQUE VALUE (IN-LBS)	DRY CONTACTS CONDUCTOR SIZE (AWG)	TORQUE VALUE (IN-LBS)	PUSH-IN
30A	18-8	13-18	14-20	



- NOTES:
- AREA CLASSIFICATION: ORDINARY
  - AVAILABLE AMBIENT TEMPERATURE RANGES: 32°F - 104°F, 32°F - 120°F
  - RATINGS: CONFIGURABLE WITH TYPE 4/4X JUNCTION BOX FOR INDOOR LOCATION

THE ATTACHED DESIGNS ARE CONSIDERED TRADE SECRETS AND POTENTIALLY PATENTABLE. IN ACCORDANCE WITH CONFIDENTIALITY AND NON-DISCLOSURE AGREEMENT, THESE DESIGNS IN ACTUAL OR CONCEPTUAL FORMS CANNOT BE DISCLOSED, REPRODUCED OR USED WITHOUT HAWS' EXPRESS WRITTEN CONSENT.

APPROVALS	DATE
DESIGN	
CHECKED	09/18/20
APPROVED	11/23/21
DRAWING NUMBER	1159921
CUSTOMER/PROJECT/FAC #	
PROJECT NUMBER	
PROJECT NAME	
PROJECT ADDRESS	
PROJECT PHONE	
PROJECT FAX	
PROJECT EMAIL	
PROJECT WEBSITE	
PROJECT URL	
PROJECT MAP	
PROJECT PHOTO	
PROJECT VIDEO	
PROJECT AUDIO	
PROJECT OTHER	

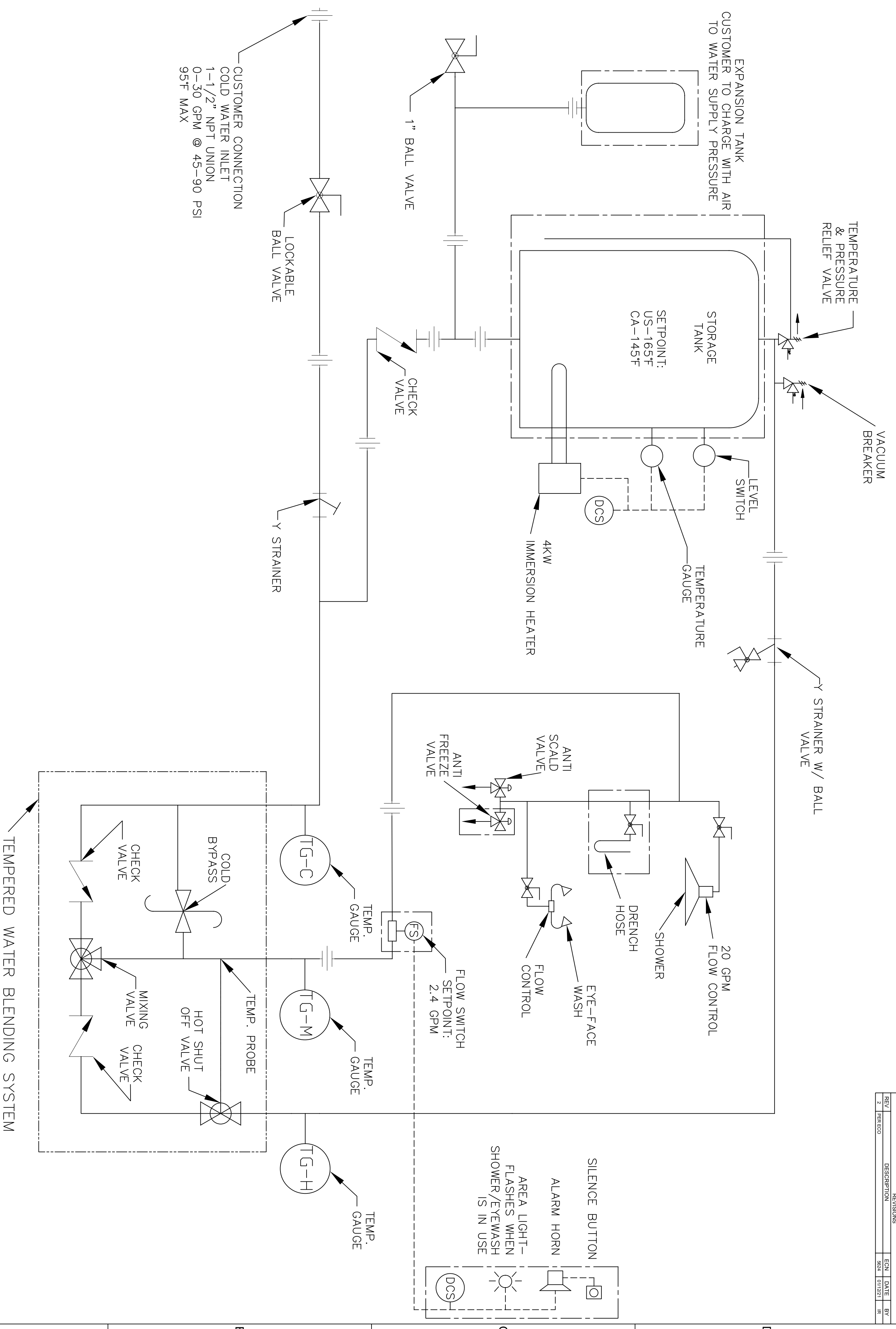
REV	DESCRIPTION	EGN	DATE	BY
2	PER ECO	5624	01/12/21	IR

4

3

2

1



CUSTOMER CONNECTION  
COLD WATER INLET  
1-1/2" NPT UNION  
0-30 GPM @ 45-90 PSI  
95°F MAX

SETPOINT:  
US-165°F  
CA-145°F

FLOW SWITCH  
SETPOINT:  
2.4 GPM

TEMPERED WATER BLENDING SYSTEM

OPTIONAL FEATURE THAT CAN BE  
CONFIGURED WHEN PURCHASED

- NOTES:
1. AREA CLASSIFICATION: ORDINARY
  2. AVAILABLE AMBIENT TEMPERATURE RANGES:  
32°F - 104°F, 32°F - 120°F
  3. RATINGS: CONFIGURABLE WITH TYPE 4/4X JUNCTION BOX  
FOR INDOOR LOCATION

APPROVALS	DATE
DRAWN IR	08/18/20
CHECKED AM	11/23/21
APPROVED G	

**Haws**  
1455 KLEPPE LANE  
SPARKS, NEVADA, 89431  
USA

TITLE:  
**8760 - SKID-MOUNTED EMERGENCY TEMPERED  
SHOWER AND EYE/FACE WASH SYSTEM**

NOTICE OF PROPRIETARY INFORMATION:  
THIS DOCUMENT IS THE PROPERTY OF HAWS CORPORATION AND THE DATA DISCLOSED HEREIN OR HEREWITH IS NOT TO BE REPRODUCED, USED, OR DISCLOSED IN ANY MANNER WITHOUT THE WRITTEN CONSENT OF HAWS CORPORATION.

THIRD ANGLE PROJECTION  
PAID

SCALE: SIZE PART NUMBER: 0560001084.D-PID

SH 1  
REV 2

2021 Haws Corporation - All Rights Reserved. HAWS® and other trademarks used in these materials are the exclusive property of Haws Corporation.

4

3

2

1