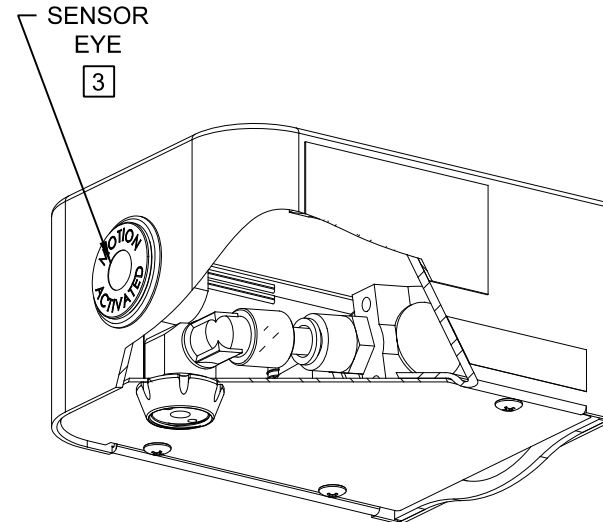



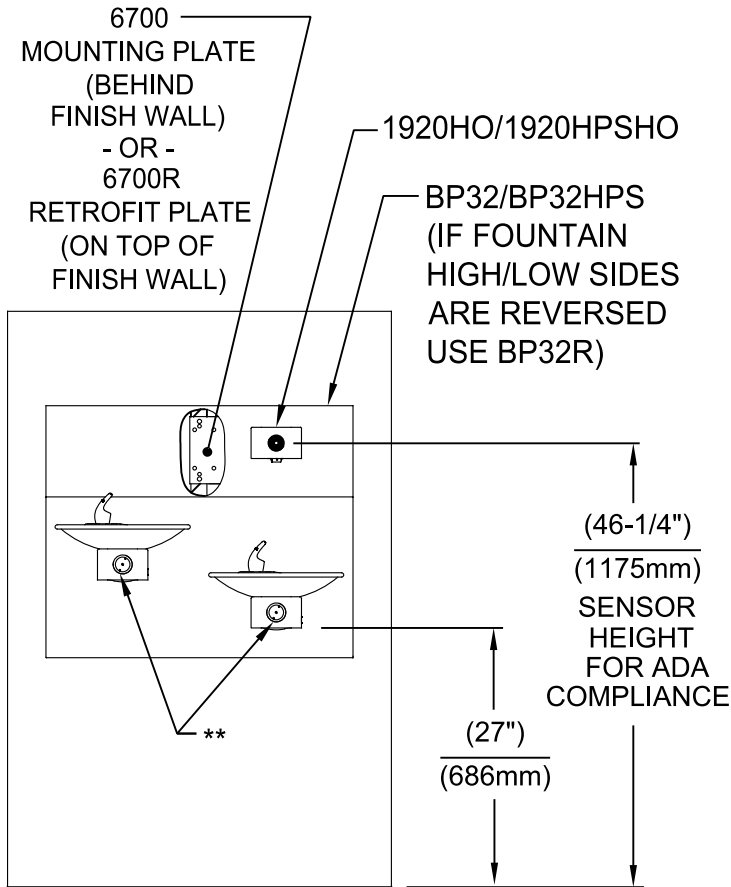
1920HO SERIES MOUNTING HOLE LOCATIONS
(3/8"-16 UNC MOUNTING HARDWARE NOT SUPPLIED)



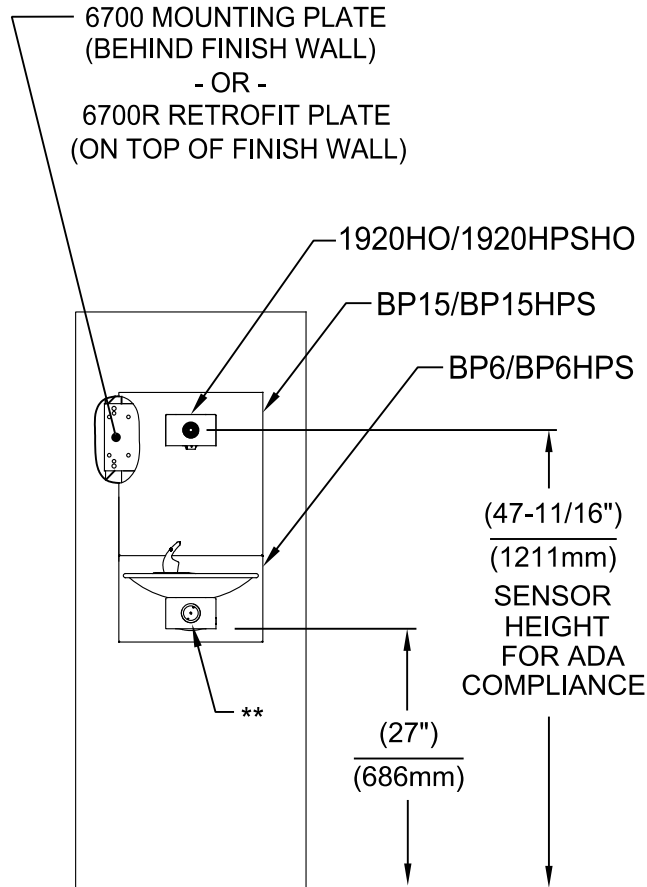
NOTES:

1. SEE SHEETS 2 THRU 7 FOR BOTTLE FILLER ADULT ADA HEIGHT APPLICATIONS AND SHEET 8 FOR CHILD ADA HEIGHT APPLICATIONS.
 2. WHEN INSTALLING THIS UNIT, LOCAL, STATE OR FEDERAL CODES SHOULD BE ADHERED TO FOR INSTALLATION LOCATIONS, WASTE AND SUPPLY REQUIREMENTS OTHER THAN SHOWN.
- 3** REFER TO 1RKHO.H OPERATION & MAINTENANCE INSTRUCTIONS FOR SENSOR SETUP.

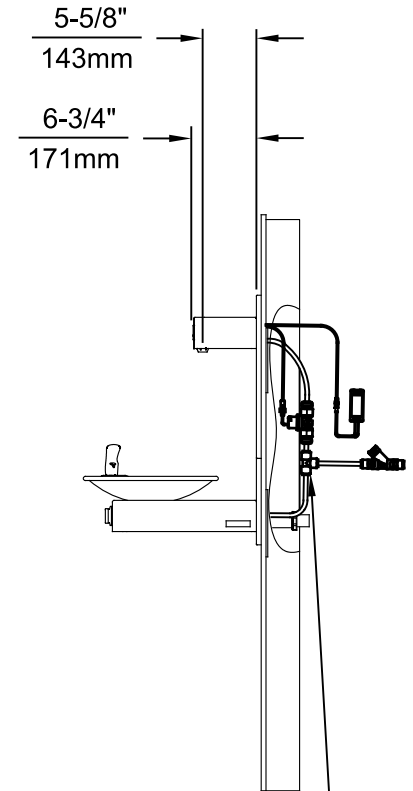
				<div>1455 KLEPPE LANE SPARKS, NEVADA 89431 (775) 359-4712 FAX (775) 359-7424 E-MAIL: HAWS@HAWS.CO.COM WEBSITE: WWW.HAWS.CO.COM</div>			
ECN NO. 5574		REVISED PER BY: ECN: 6136 FV		MODEL(S) 1920HO/1920HPSHO/1920WHO		PART NUMBER 0510001063.D	
DRAWN: FV		DATE: 08/18/20		CHK'D: KM		REVISION 8	
APPROVED: FV		DATE: 11/04/24		SCALE: N/A		DRAWING TYPE: INSTALLATION	
				SIZE: A		SHEET 1 OF 8	



INSTALLATION ABOVE HAWS 1011 & H1011.8 SERIES



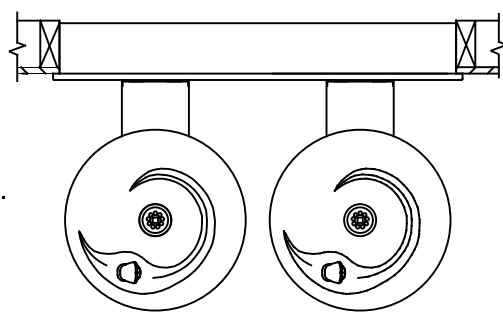
INSTALLATION ABOVE HAWS 1001 & H1001.8 SERIES



3/8" O.D. SUPPLY TUBING AND 3/8" O.D. PUSH-IN TEE SUPPLIED. (CONNECT TO FOUNTAIN SUPPLY LINE)

* IF YOUR FOUNTAIN IS THIS STYLE USE THESE DIMENSIONS

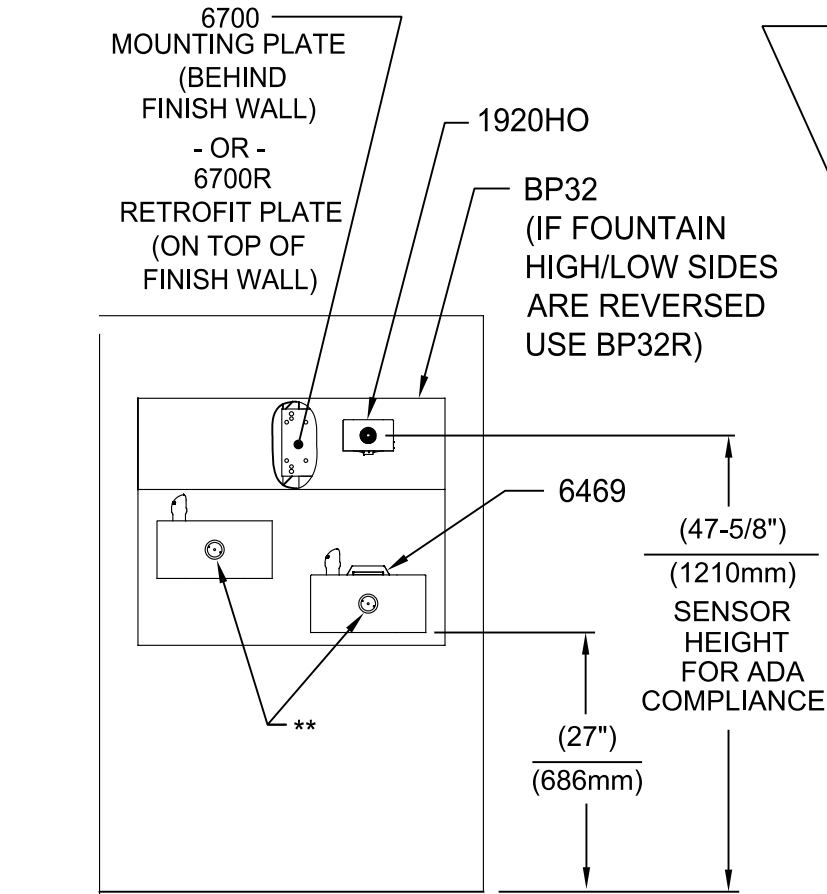
1. SEE SEPARATE INSTALLATION DRAWINGS FOR MOUNTING PLATES AND BACK PANELS (SHOWN FOR REFERENCE - NOT SUPPLIED).
2. WHEN INSTALLING THIS UNIT, LOCAL, STATE OR FEDERAL CODES SHOULD BE ADHERED TO FOR INSTALLATION LOCATIONS, WASTE & SUPPLY REQUIREMENTS OTHER THAN SHOWN.



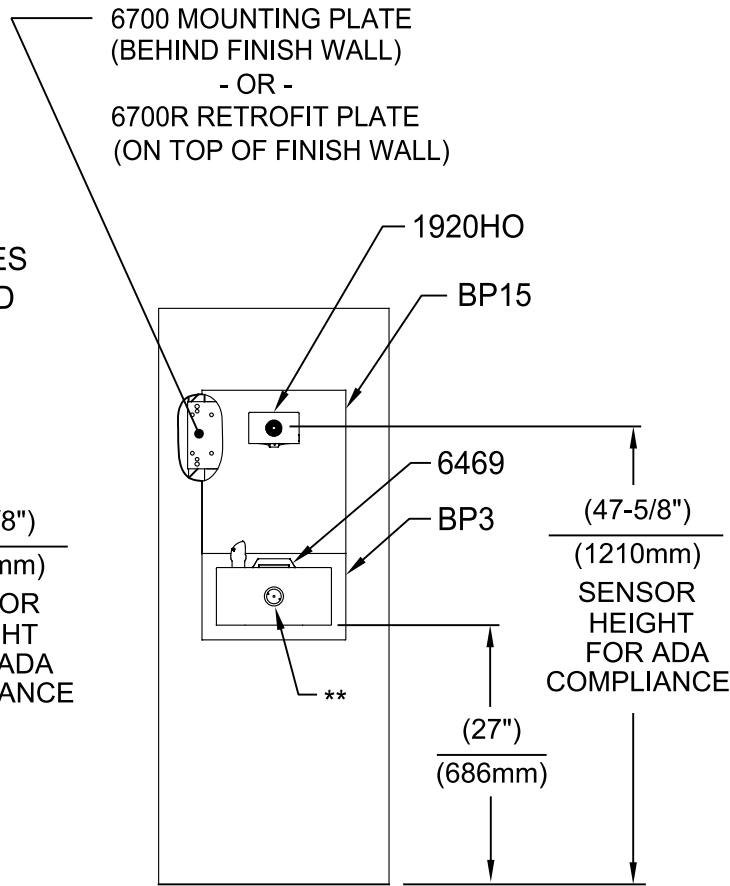
** EXISTING PUSH BUTTON ASSEMBLY SHOWN, CAN BE CONVERTED TO HANDS OFF STYLE, USING RETROFIT KIT MODEL 1RKHO.H OR 2RKHO.H DEPENDING ON CUSTOMER REQUIREMENTS.



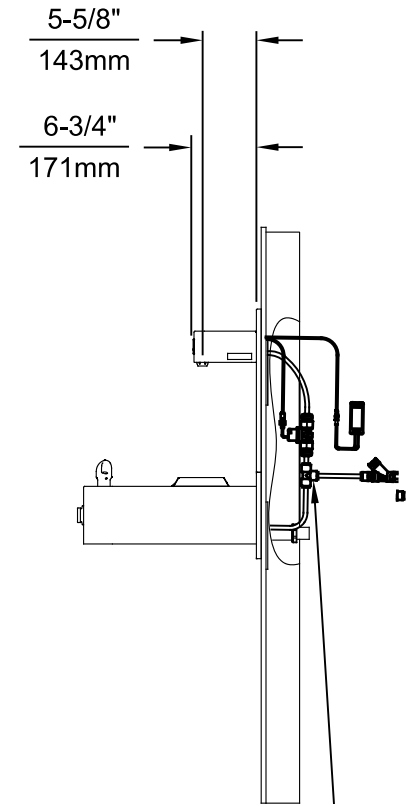
ECN NO. 5574	REVISED PER BY: ECN: 6136 FV	DATE: 08/18/20	CHK'D: KM	MODEL(S) 1920HO/1920HPSHO/1920WHO	PART NUMBER 0510001063.D
APPROVED: FV	DATE: 11/04/24	SCALE: N/A	DRAWING TYPE: INSTALLATION	SIZE: A	SHEET 2 OF 8



INSTALLATION ABOVE HAWS 1119 & H1119.8 SERIES

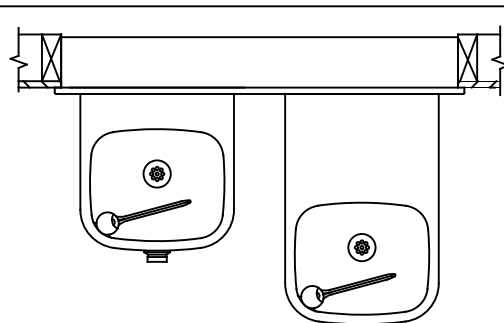


**INSTALLATION ABOVE HAWS 1109 & H1109.8 SERIES
SEE SHEET 8 FOR INSTALLATION AT CHILD HEIGHT**



* IF YOUR FOUNTAIN IS THIS STYLE USE THESE DIMENSIONS

1. SEE SEPARATE INSTALLATION DRAWINGS FOR MOUNTING PLATES, BACK PANELS AND DRIP TRAY (NOT SUPPLIED).
2. WHEN INSTALLING THIS UNIT, LOCAL, STATE OR FEDERAL CODES SHOULD BE ADHERED TO FOR INSTALLATION LOCATIONS, WASTE & SUPPLY REQUIREMENTS OTHER THAN SHOWN.

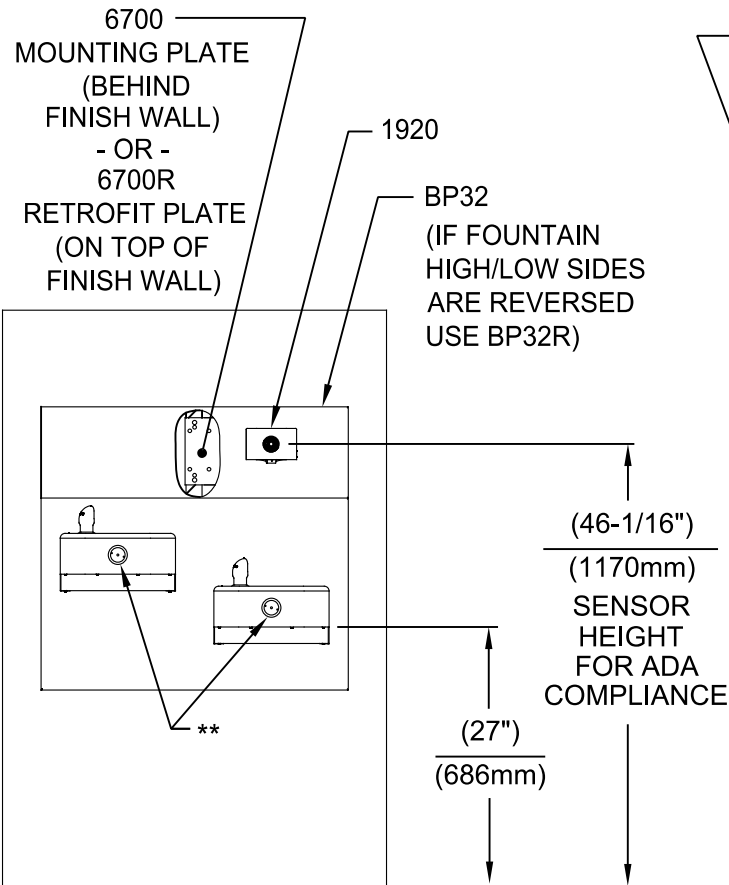


** EXISTING PUSH BUTTON ASSEMBLY SHOWN, CAN BE CONVERTED TO HANDS OFF STYLE, USING RETROFIT KIT MODEL 1RKHO.H OR 2RKHO.H DEPENDING ON CUSTOMER REQUIREMENTS.

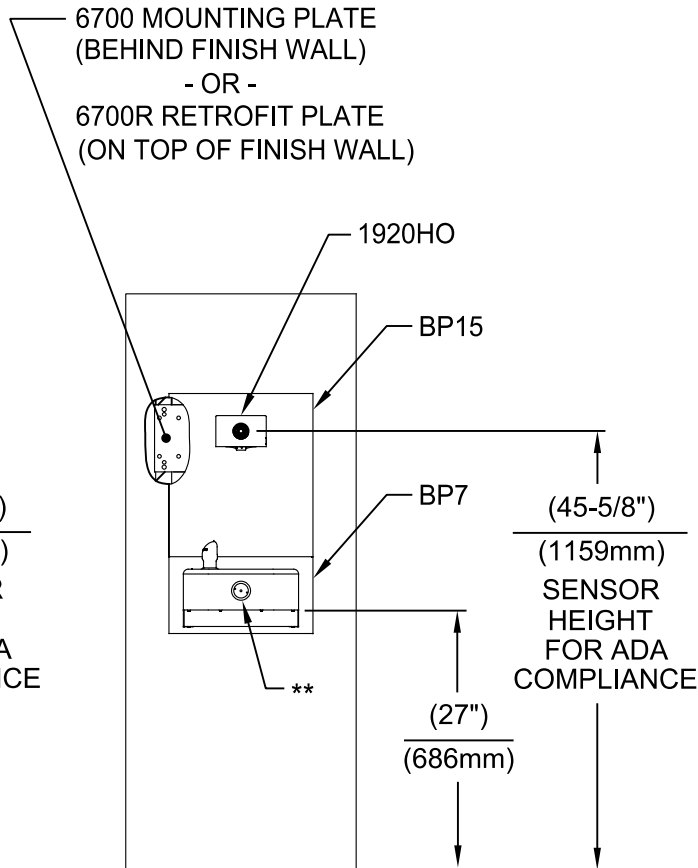


1455 KLEPPE LANE
SPARKS, NEVADA 89431
(775) 359-4712 FAX (775) 359-7424
E-MAIL: HAWS@HAWS.CO.COM
WEBSITE: WWW.HAWS.CO.COM

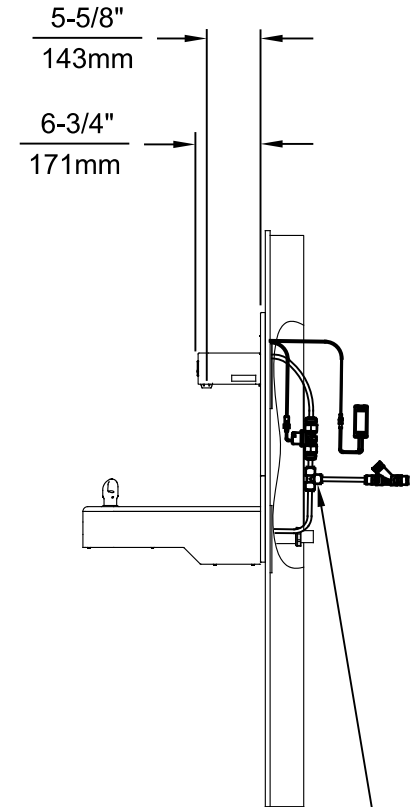
ECN NO. 5574	REVISED PER ECN: 6136	BY: FV	MODEL(S) 1920HO/1920HPSHO/1920WHO	PART NUMBER 0510001063.D
DRAWN: FV	DATE: 08/18/20	CHK'D: KM		REVISION 8
APPROVED: FV	DATE: 11/04/24	SCALE: N/A	DRAWING TYPE: INSTALLATION	SIZE: A SHEET 3 OF 8



INSTALLATION ABOVE HAWS 1117L & H1117.8 SERIES

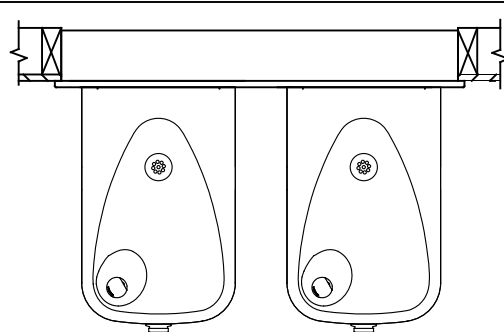


**INSTALLATION ABOVE HAWS 1107L & H1107.8 SERIES
SEE SHEET 8 FOR INSTALLATION AT CHILD HEIGHT**



* IF YOUR FOUNTAIN IS THIS STYLE USE THESE DIMENSIONS

1. SEE SEPARATE INSTALLATION DRAWINGS FOR MOUNTING PLATES AND BACK PANELS (SHOWN FOR REFERENCE - NOT SUPPLIED).
2. WHEN INSTALLING THIS UNIT, LOCAL, STATE OR FEDERAL CODES SHOULD BE ADHERED TO FOR INSTALLATION LOCATIONS, WASTE & SUPPLY REQUIREMENTS OTHER THAN SHOWN.

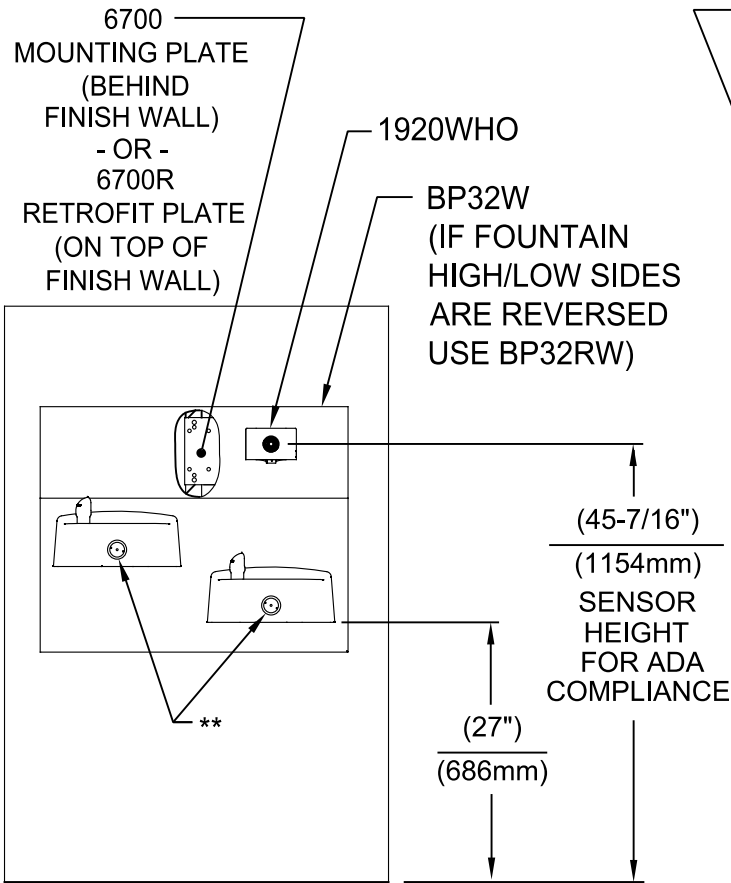


** EXISTING PUSH BUTTON ASSEMBLY SHOWN, CAN BE CONVERTED TO HANDS OFF STYLE, USING RETRO-FIT KIT MODEL 1RKHO.H OR 2RKHO.H DEPENDING ON CUSTOMER REQUIREMENTS.

3/8" O.D. SUPPLY TUBING AND 3/8" O.D. PUSH-IN TEE SUPPLIED. (CONNECT TO FOUNTAIN SUPPLY LINE)

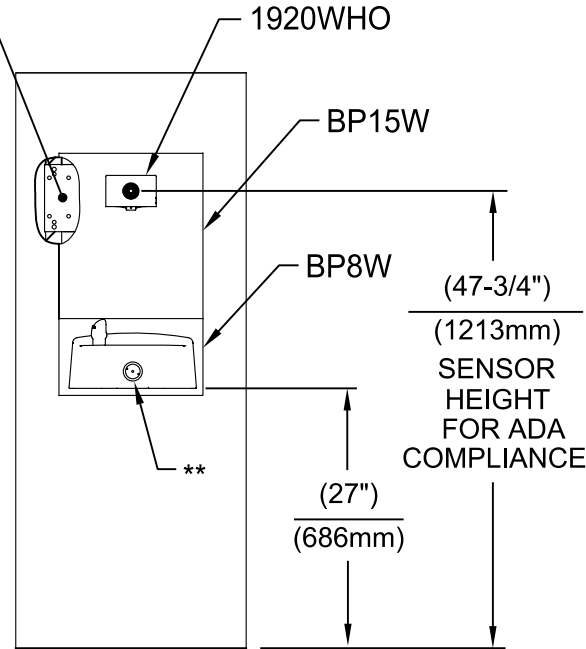


ECN NO. 5574	REVISED PER BY: ECN: 6136 FV	MODEL(S) 1920HO/1920HPSHO/1920WHO	PART NUMBER 0510001063.D
DRAWN: FV	DATE: 08/18/20	CHK'D: KM	REVISION 8
APPROVED: FV	DATE: 11/04/24	SCALE: N/A	DRAWING TYPE: INSTALLATION
		SIZE: A	SHEET 4 OF 8

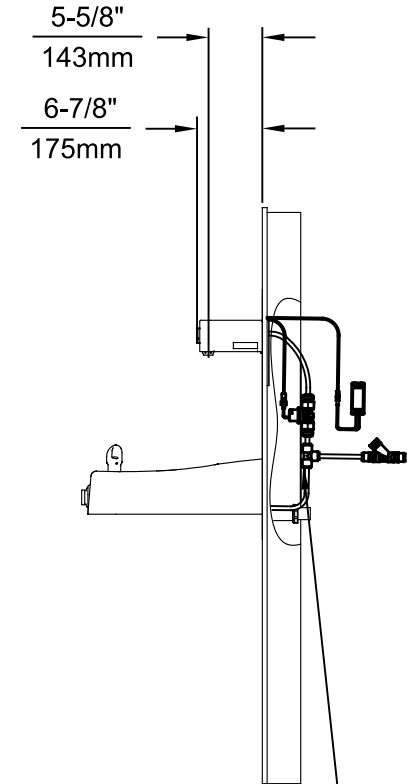


INSTALLATION ABOVE HAWS 1501

6700 MOUNTING PLATE
(BEHIND FINISH WALL)
- OR -
BOLT 1920WHO ONTO EXISTING WALL
(MOUNTING HARDWARE ONLY SUPPLIED
WITH 6700 SERIES MOUNTING PLATES)

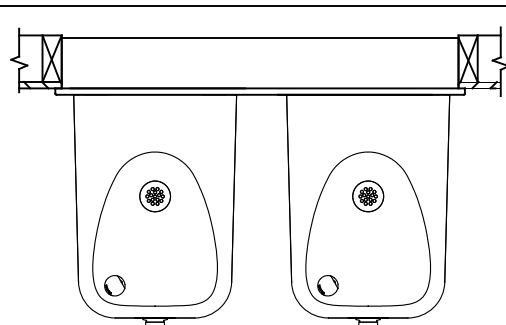


**INSTALLATION ABOVE HAWS 1311
SEE SHEET 8 FOR INSTALLATION AT CHILD HEIGHT**



* IF YOUR FOUNTAIN IS THIS STYLE USE THESE DIMENSIONS

1. SEE SEPARATE INSTALLATION DRAWINGS FOR MOUNTING PLATES AND BACK PANELS (SHOWN FOR REFERENCE - NOT SUPPLIED).
2. WHEN INSTALLING THIS UNIT, LOCAL, STATE OR FEDERAL CODES SHOULD BE ADHERED TO FOR INSTALLATION LOCATIONS, WASTE & SUPPLY REQUIREMENTS OTHER THAN SHOWN.



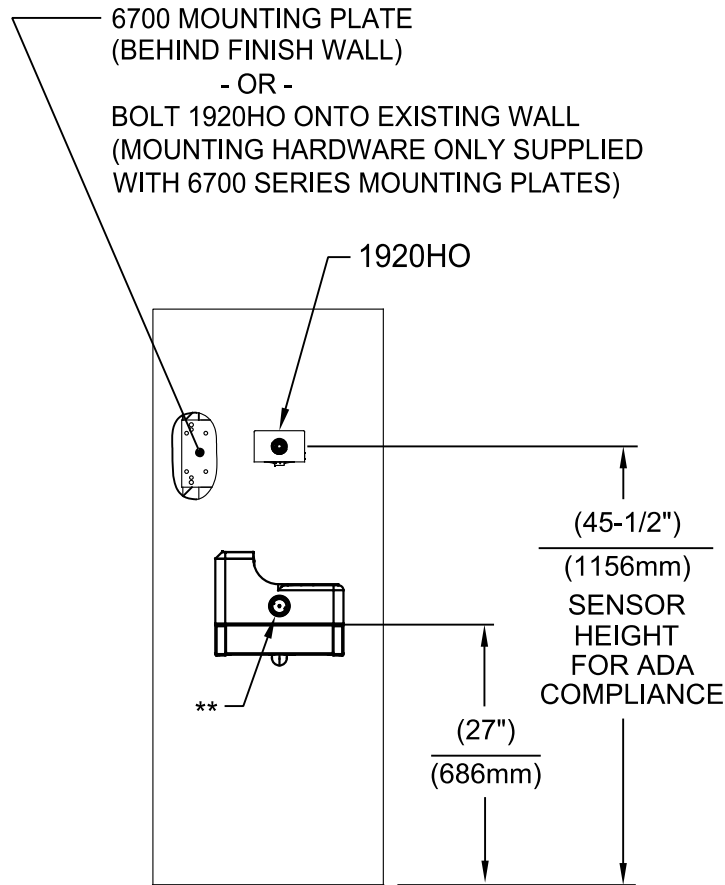
** EXISTING PUSH BUTTON ASSEMBLY SHOWN, CAN BE CONVERTED TO HANDS OFF STYLE, USING RETRO-FIT KIT MODEL 1RKHO.H OR 2RKHO.H DEPENDING ON CUSTOMER REQUIREMENTS.

3/8" O.D. SUPPLY TUBING AND 3/8" O.D. PUSH-IN TEE SUPPLIED. (CONNECT TO FOUNTAIN SUPPLY LINE)

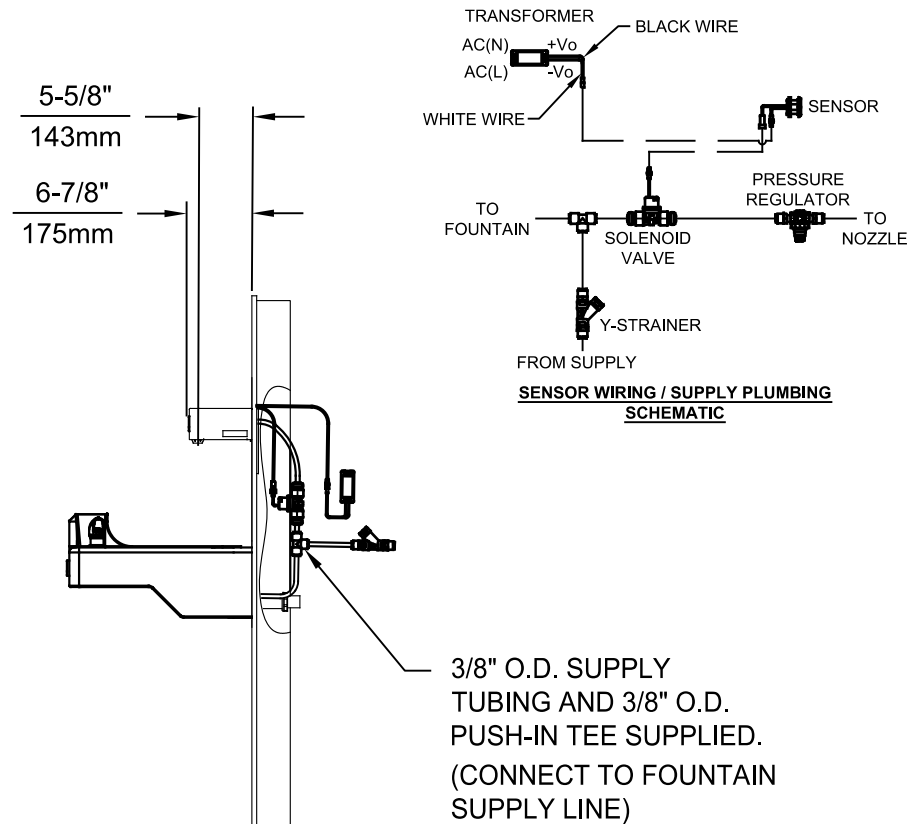


1455 KLEPPE LANE
SPARKS, NEVADA 89431
(775) 359-4712 FAX (775) 359-7424
E-MAIL: HAWS@HAWS.CO.COM
WEBSITE: WWW.HAWS.CO.COM

ECN NO. 5574	REVISED PER BY: ECN: 6136 FV	MODEL(S) 1920HO/1920HPSHO/1920WHO	PART NUMBER 0510001063.D
DRAWN: FV	DATE: 08/18/20	CHK'D: KM	REVISION 8
APPROVED: FV	DATE: 11/04/24	SCALE: N/A	DRAWING TYPE: INSTALLATION
		SIZE: A	SHEET 5 OF 8



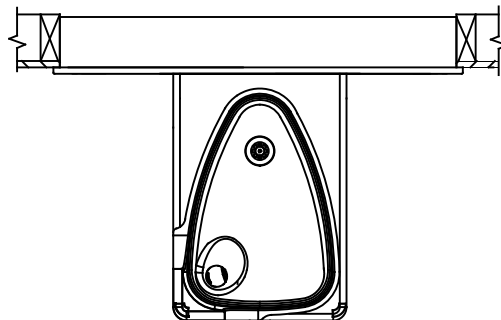
INSTALLATION ABOVE HAWS 1047




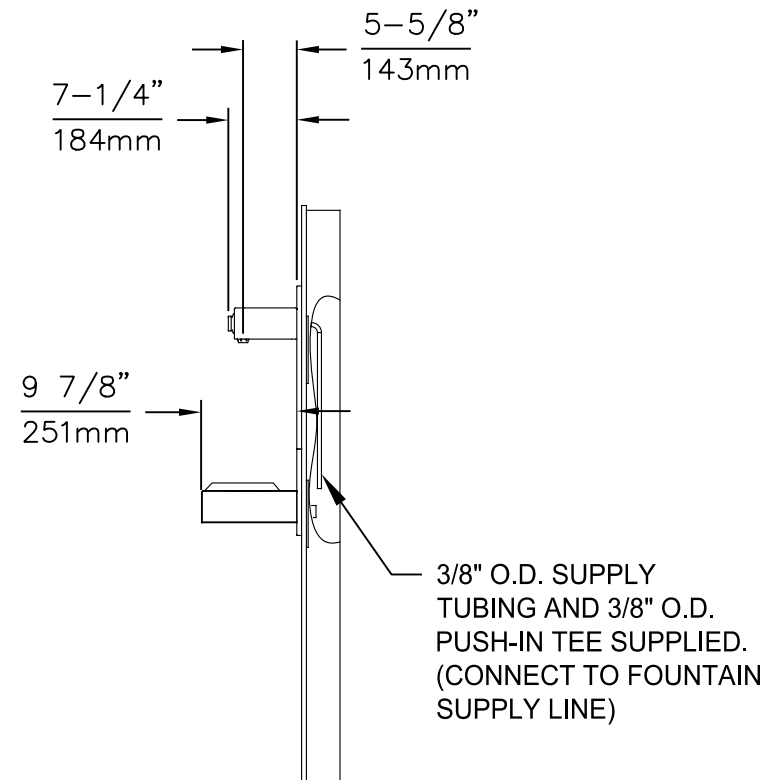
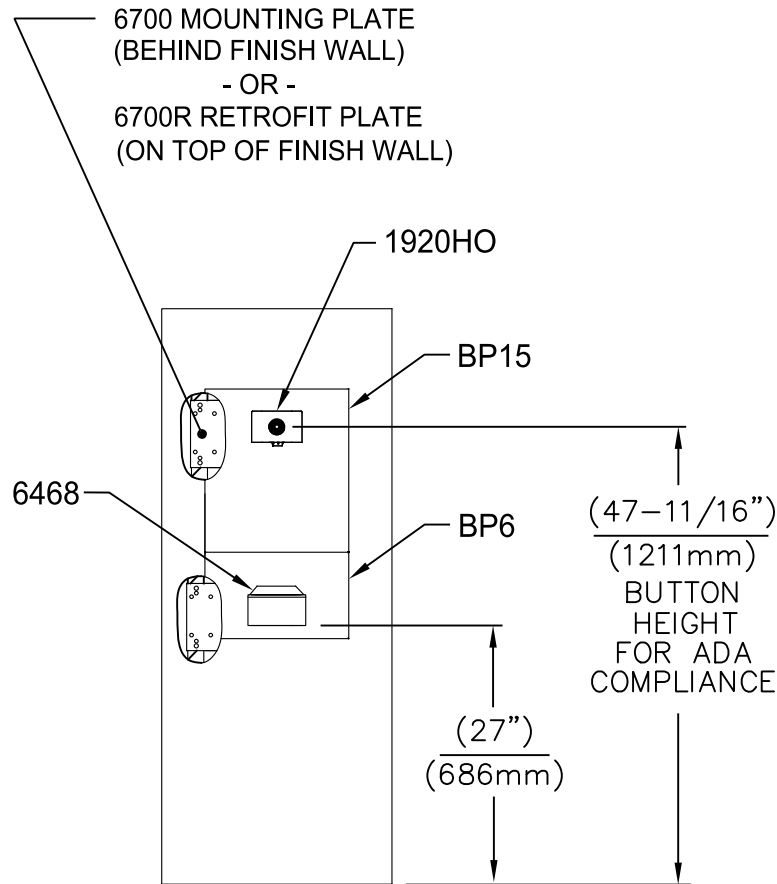
** EXISTING PUSH BUTTON ASSEMBLY SHOWN, CAN BE CONVERTED TO HANDS OFF STYLE, USING RETRO-FIT KIT MODEL 1RKHO.H.

* IF YOUR FOUNTAIN IS THIS STYLE USE THESE DIMENSIONS

1. SEE SEPARATE INSTALLATION DRAWINGS FOR MOUNTING PLATES AND BACK PANELS (SHOWN FOR REFERENCE - NOT SUPPLIED).
2. WHEN INSTALLING THIS UNIT, LOCAL, STATE OR FEDERAL CODES SHOULD BE ADHERED TO FOR INSTALLATION LOCATIONS, WASTE & SUPPLY REQUIREMENTS OTHER THAN SHOWN.



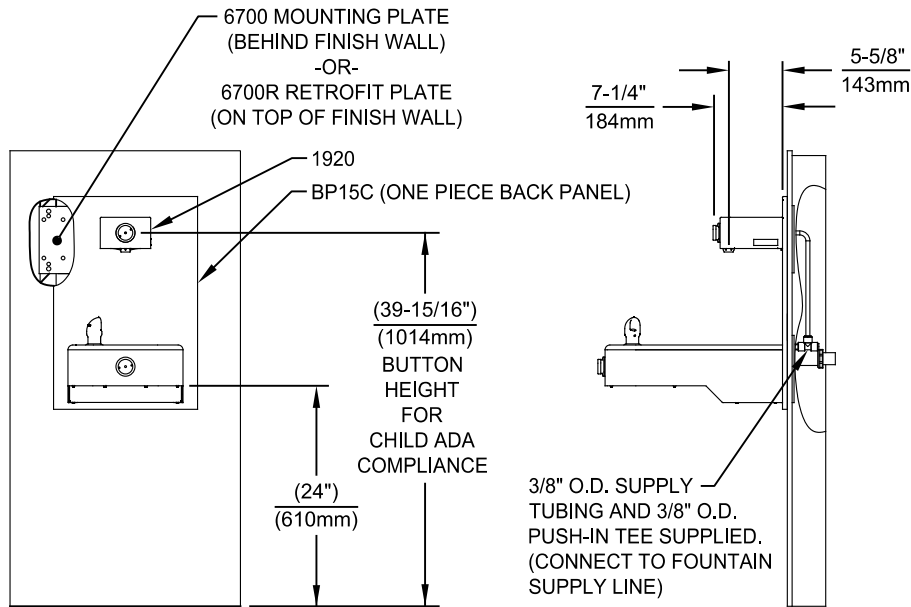
				1455 KLEPPE LANE SPARKS, NEVADA 89431 (775) 359-4712 FAX (775) 359-7424 E-MAIL: HAWS@HAWSO.COM WEBSITE: WWW.HAWSO.COM			
ECN NO. 5574	REVISED PER ECN: 6136	BY: FV	MODEL(S) 1920HO/1920HPSHO/1920WHO	PART NUMBER 0510001063.D			
DRAWN: FV	DATE: 08/18/20	CHK'D: KM	APPROVED: FV	DATE: 11/04/24	SCALE: N/A	DRAWING TYPE: INSTALLATION	SIZE: A SHEET 6 OF 8



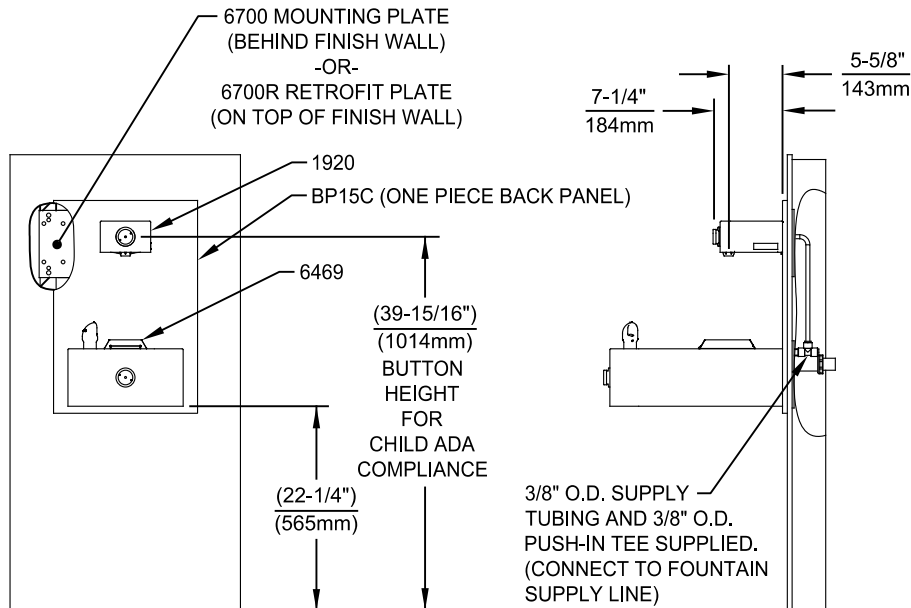
INSTALLATION ABOVE 6468

1. SEE SEPARATE INSTALLATION DRAWINGS FOR MOUNTING PLATES AND BACK PANELS (SHOWN FOR REFERENCE - NOT SUPPLIED).
2. WHEN INSTALLING THIS UNIT, LOCAL, STATE OR FEDERAL CODES SHOULD BE ADHERED TO FOR INSTALLATION LOCATIONS, WASTE & SUPPLY REQUIREMENTS OTHER THAN SHOWN.

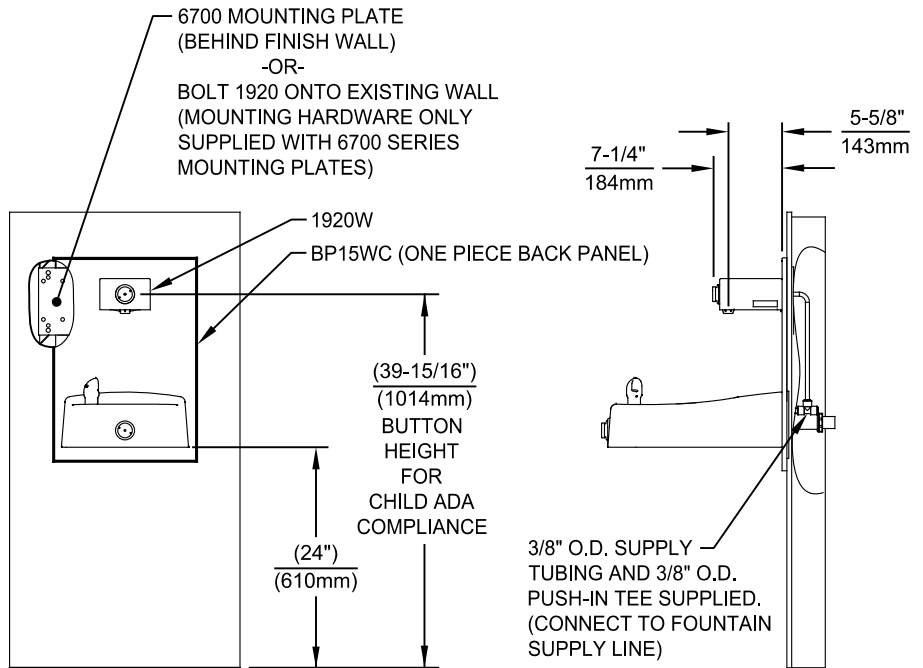
			1455 KLEPPE LANE SPARKS, NEVADA 89431 (775) 359-4712 FAX (775) 359-7424 E-MAIL: HAWS@HAWSO.COM WEBSITE: WWW.HAWSO.COM		
ECN NO. 5744	REVISED PER ECN: 6136	BY: FV	MODEL(S) 1920HO/1920HPSHO/1920WHO		PART NUMBER 0510001063.D
DRAWN: FV	DATE: 10/04/21	CHK'D: KM			REVISION 8
APPROVED: FV	DATE: 11/04/24	SCALE: N/A	DRAWING TYPE: INSTALLATION	SIZE: A	SHEET 7 OF 8



INSTALLATION ABOVE HAWS 1107L & H1107.8 SERIES



INSTALLATION ABOVE HAWS 1109, 1109.14 & H1109.8 SERIES
MUST USE PARALLEL APPROACH WITH THIS BOWL COMBINATION



INSTALLATION ABOVE HAWS 1311

NOTES:

- HEIGHT DIMENSIONS SHOWN ARE FOR CHILD ADA APPLICATIONS:
- BOTTLE FILLER HEIGHT AT 40\" MAX.
- DRINKING FOUNTAIN BUBBLER HEIGHT AT 30\" MAX.
(SEE SHEETS 3, 4 & 5 FOR ADULT ADA HEIGHT DIMENSIONS)
- SEE SEPARATE INSTALLATION DRAWINGS FOR MOUNTING PLATES AND BACK PANELS (SHOWN FOR REFERENCE - NOT SUPPLIED).
- WHEN INSTALLING THIS UNIT, LOCAL, STATE OR FEDERAL CODES SHOULD BE ADHERED TO FOR INSTALLATION LOCATIONS, WASTE & SUPPLY REQUIREMENTS OTHER THAN SHOWN.



1455 KLEPPE LANE
SPARKS, NEVADA 89431
(775) 359-4712 FAX (775) 359-7424
E-MAIL: HAWS@HAWS.CO.COM
WEBSITE: WWW.HAWS.CO.COM

ECN NO. 5744	REVISED PER ECN: 6136	BY: FV	MODEL(S) 1920HO/1920HPSHO/1920WHO	PART NUMBER 0510001063.D
DRAWN: FV	DATE: 02/26/24	CHK'D: KM		REVISION 8
APPROVED: FV	DATE: 11/04/24	SCALE: N/A	DRAWING TYPE: INSTALLATION	SIZE: A SHEET 8 OF 8