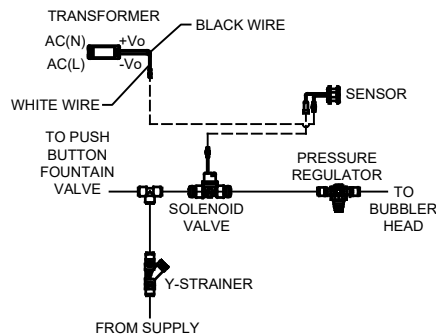
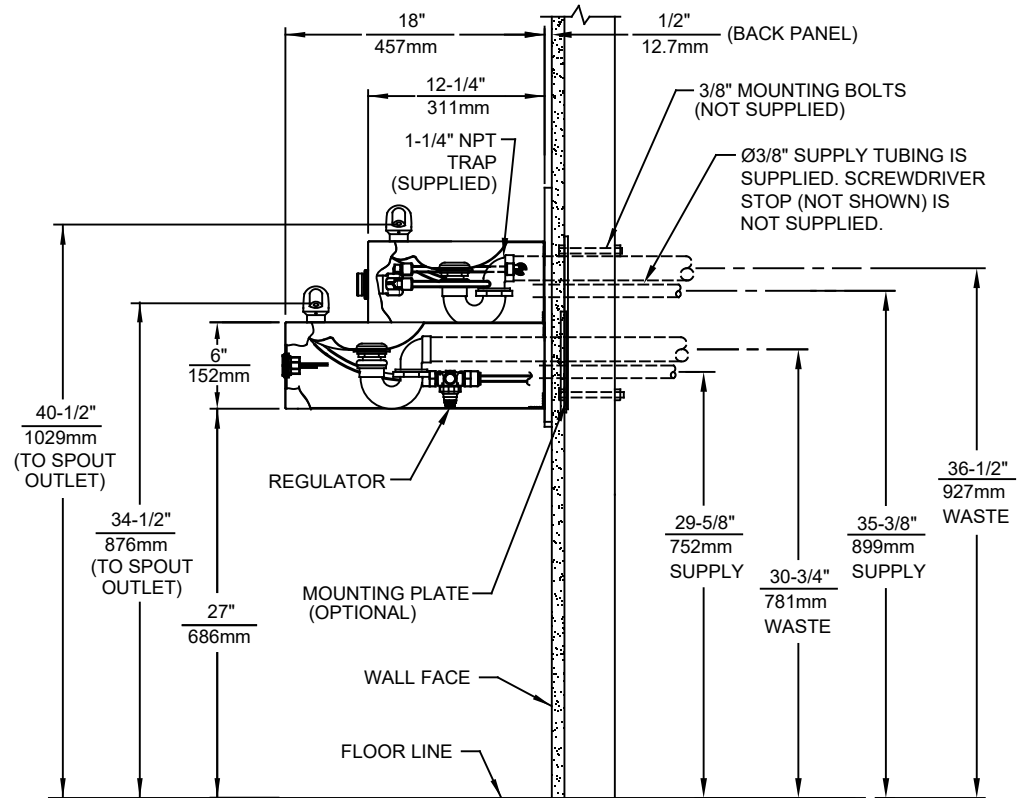
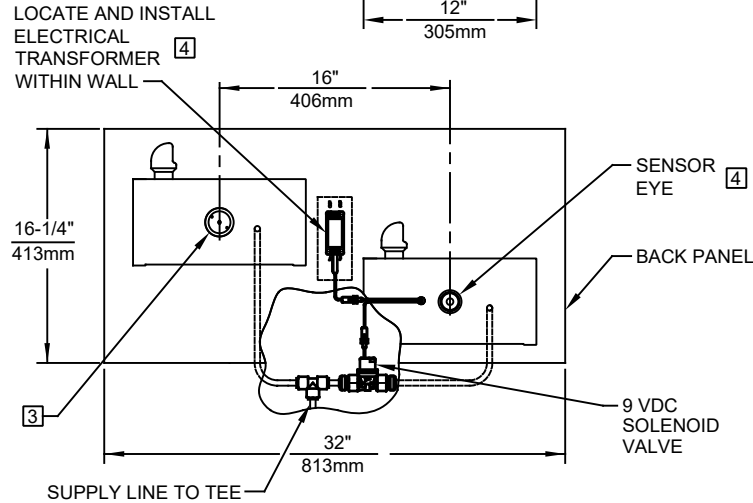


NOTES:

1. HOLD ROUGH-IN DIMENSIONS $\pm 1/4"$ (6.4mm).
2. WHEN INSTALLING THIS UNIT, LOCAL, STATE, OR FEDERAL CODES SHOULD BE ADHERED TO. FOR INSTALLATION HEIGHTS OTHER THAN SHOWN, DIMENSIONS MARKED (*) MUST BE ADJUSTED ACCORDINGLY.
- 3 REFER TO 5874 SERIES/VRK5874 OPERATION AND MAINTENANCE MANUAL FOR PUSH BUTTON AND VALVE INSTALLATION AND MAINTENANCE INSTRUCTIONS.
- 4 REFER TO 1RKHO OR 2RKHO SERIES OPERATION INSTRUCTONS FOR TRANSFORMER AND SENSOR SETUP.

MODEL 1119HO SHOWN
 MODEL 1119HO2 ON SHEET 2
 (ROUGH-IN DIMENSIONS APPLY TO BOTH MODELS)

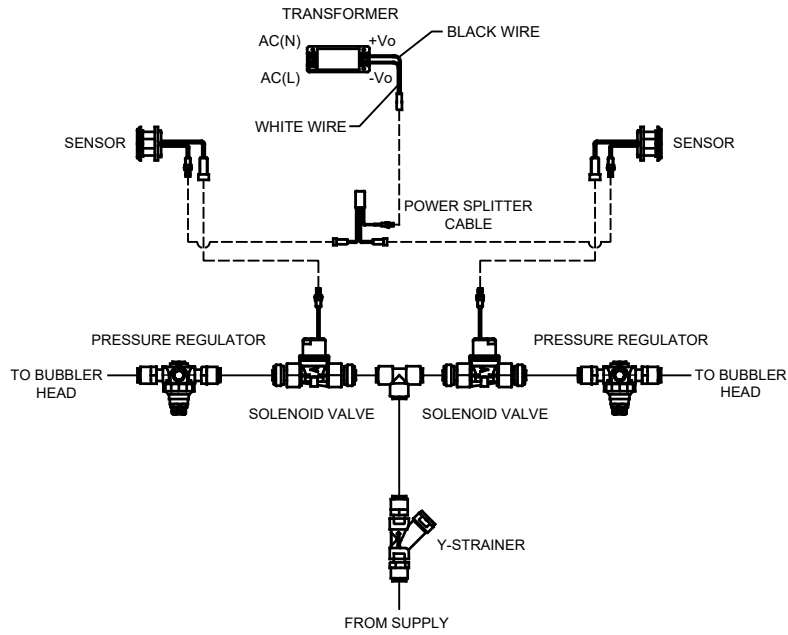
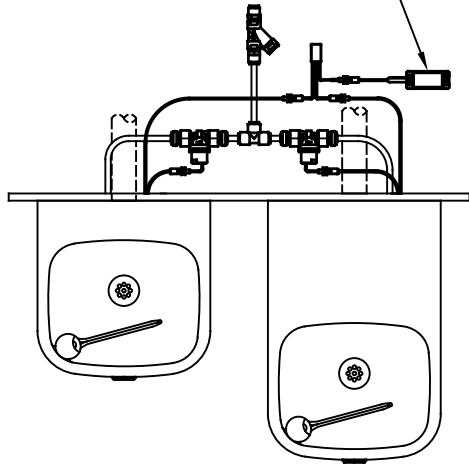


**SENSOR WIRING / SUPPLY
 PLUMBING SCHEMATIC**

1455 KLEPPE LANE
 SPARKS, NEVADA 89431
 (775) 359-4712 FAX (775) 359-7424
 E-MAIL: HAWS@HAWSCO.COM
 WEBSITE: WWW.HAWSCO.COM

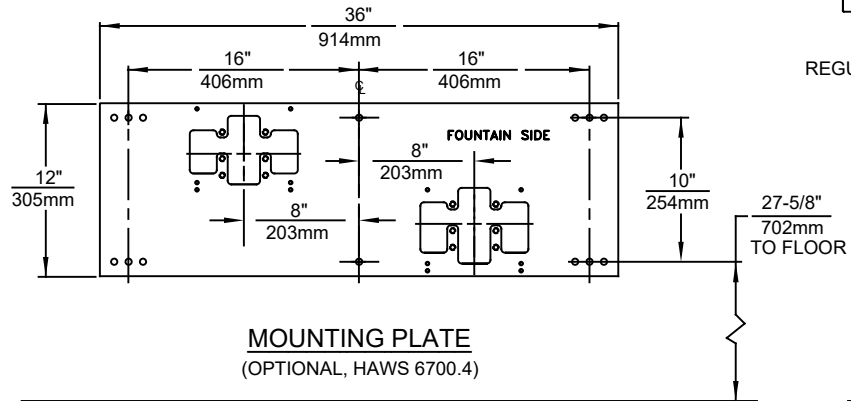
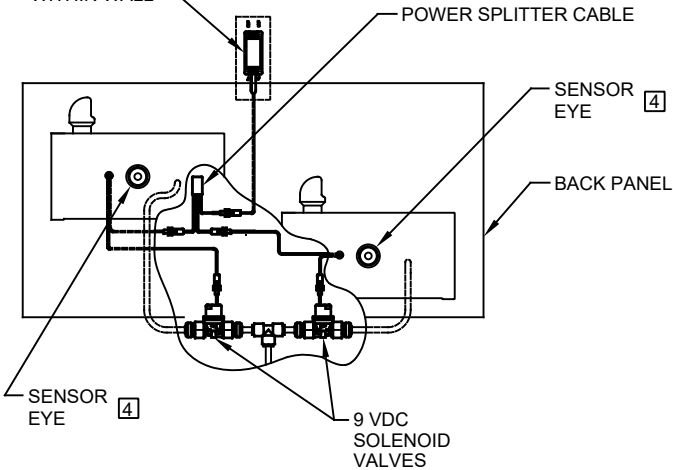
ECN NO. 5605	REVISED PER BY: ECN: 5684 DP	MODEL(S)	PART NUMBER
DRAWN: FV	DATE: 10/23/20	CHK'D: FV	0510001123.D
APPROVED: BJM	DATE: 04/28/21	SCALE: 1:14	REVISION
		DRAWING TYPE: INSTALLATION	2
		SIZE: A	SHEET 1 OF 2

100-277VAC-9VDC
TRANSFORMER
AND DC SPLITTER CABLE
(SUPPLIED)
MUST BE PROTECTED
FROM DIRECT
CONTACT WITH WATER [4]

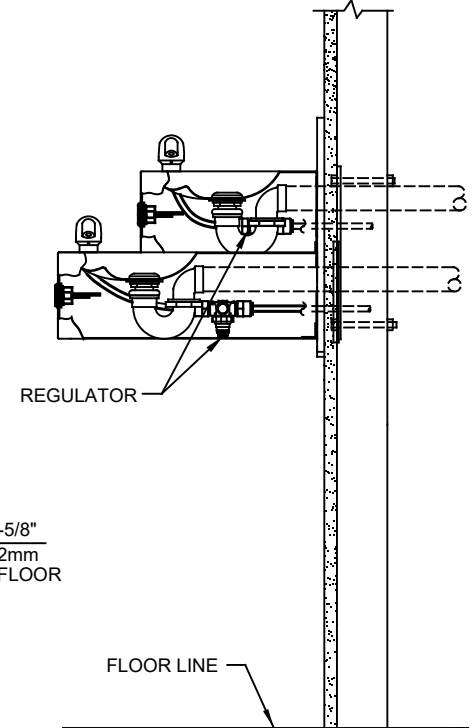


**SENSOR WIRING / SUPPLY PLUMBING
SCHEMATIC**

LOCATE AND INSTALL
ELECTRICAL
TRANSFORMER
WITHIN WALL [4]



**MOUNTING PLATE
(OPTIONAL, HAWS 6700.4)**



MODEL 1119HO2 SHOWN
MODEL 1119HO ON SHEET 1
(SEE SHEET 1 FOR APPLICABLE ROUGH-IN DIMENSIONS)



1455 KLEPPE LANE
SPARKS, NEVADA 89431
(775) 359-4712 FAX (775) 359-7424
E-MAIL: HAWS@HAWSCO.COM
WEBSITE: WWW.HAWSCO.COM

ECN NO. 5605	REVISED PER ECN: 5684	BY: DP	MODEL(S)	PART NUMBER
DRAWN: FV	DATE: 10/23/20	CHK'D: FV	1119HO/1119HO2	0510001123.D
APPROVED: BJM	DATE: 04/28/21	SCALE: 1:14	DRAWING TYPE: INSTALLATION	REVISION 2
			SIZE: A	SHEET 2 OF 2