

## FEATURES & BENEFITS

### CONSTRUCTION

Unit is made of 14 gauge Type 304 stainless steel with a white painted finish that resists stains and corrosion, and has soft rounded corners. Unit features vandal-resistant bottom plate and dispensing nozzle.

### VANDAL RESISTANT

The push button and bottom plate are locked in place, discouraging unwanted vandal tampering.

### PUSH BUTTON VALVE

With its patented stainless steel, push-button activated valve assembly which allows for front access stream adjustment as well as cartridge and strainer access, this bottle filler offers 100% lead free waterways. The valve works at an operating pressure range of 30 to 90 psi (2.1 to 6.2 bar).

### LAMINAR FLOW

Adjustable, splash-free, 1 gpm (3.78 L) laminar water flow

### EFFICIENT & FLEXIBLE INSTALLATION

Unit is designed for retrofit or new construction applications. No drain required for mounting over existing drinking fountain.

### MOUNTING OPTIONS

Select from mounting plate and back panel models to complete installation. Unit can mount on various wall types.



## OPTIONS

- Water Filter: Model 6480 filter kit with 3000 gallon carbon block filter, filter head, and mounting bracket.
- Mounting Plate: Model 6700 in-wall mounting plate for model 1920W.
- Mounting Plate: Model 6700R on-wall mounting plate for model 1920W.
- Back Panel: Model BP8W white powder-coated stainless steel back panel for 1920W.
- Back Panel: Model BP15W white powder-coated stainless steel back panel for 1920W.

For more information, visit [www.hawsco.com](http://www.hawsco.com) or call (888) 640-4297.

## SPECIFICATIONS

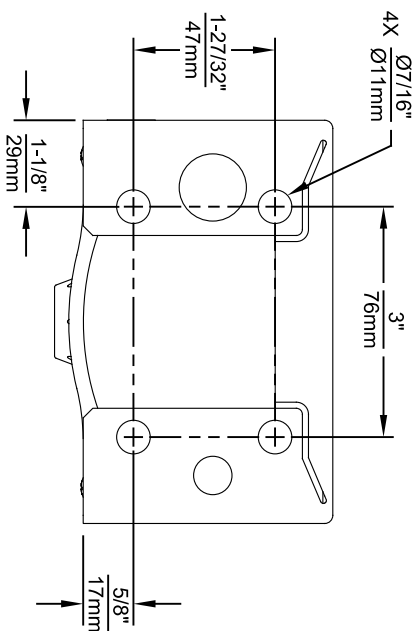
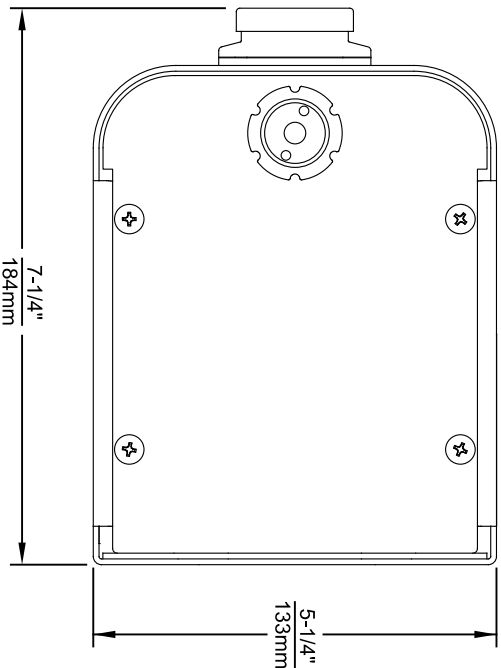
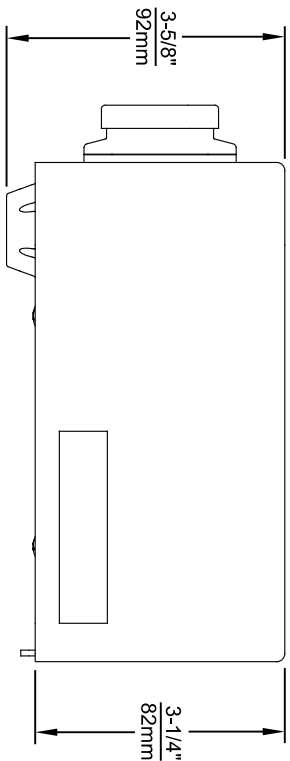
Model 1920W wall mounted vandal-resistant bottle filler shall include 100% lead-free waterways, gloss white finish, stainless steel construction, 1 gpm (3.78 L) laminar flow, vandal-resistant push-button operated stainless steel valve with front-accessible cartridge and flow adjustment. It can be used as a stand-alone station, or mounted above the Haws® 1311 and 1501 drinking fountain models.

**This product requires a mounting plate; either the Haws model 6700 in-wall or the 6700R on-wall support plate.**

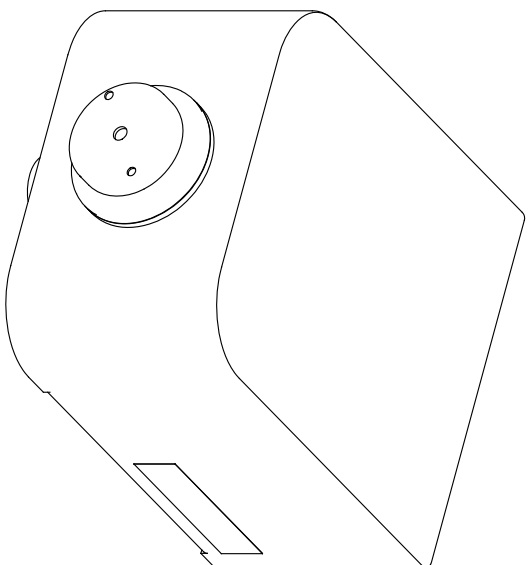
## APPLICATIONS

This type of wall mounted bottle filler may be placed in settings such as schools and other locations in and around office buildings, or with existing fountain installations where the temperature remains above freezing. Haws manufactures drinking fountains, faucets and electric water coolers to be lead-free by all known definitions including NSF/ANSI/CAN 61-Section 9, NSF/ANSI/CAN 372, California Proposition 65, and the Federal Safe Drinking Water Act. Product is compliant to California Health and Safety Code 116875 (AB 1953-2006), and 116876 (AB 100) "NSF/ANSI/CAN 61: Q ≤ 1".





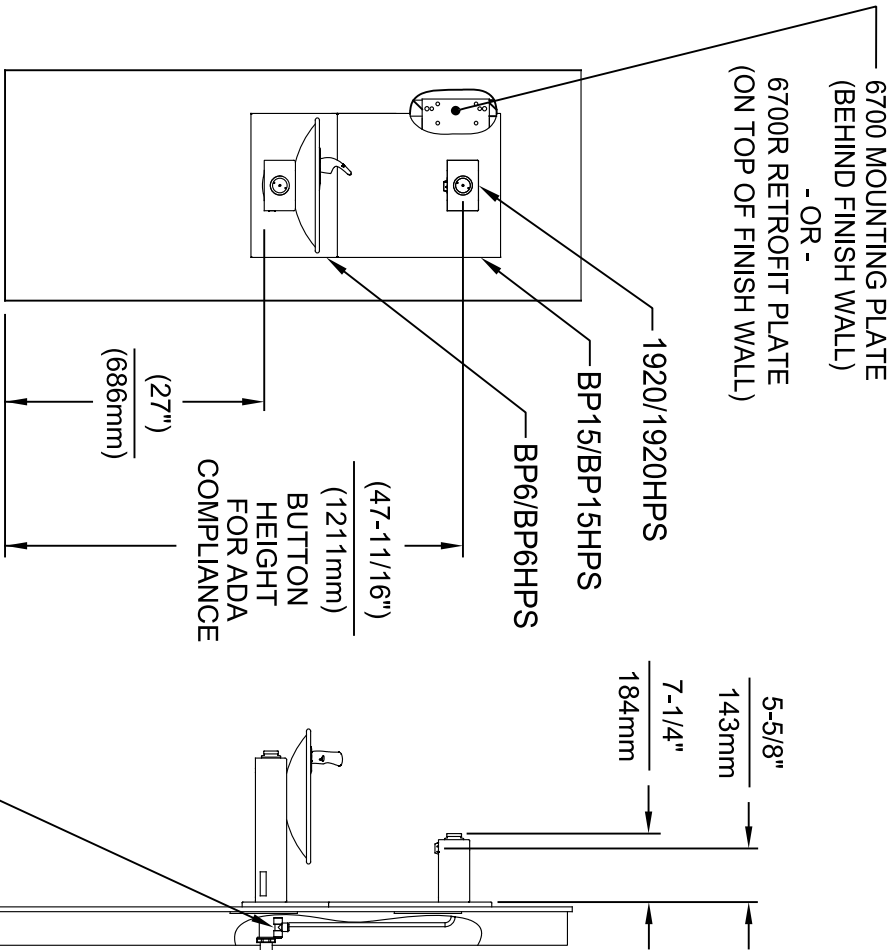
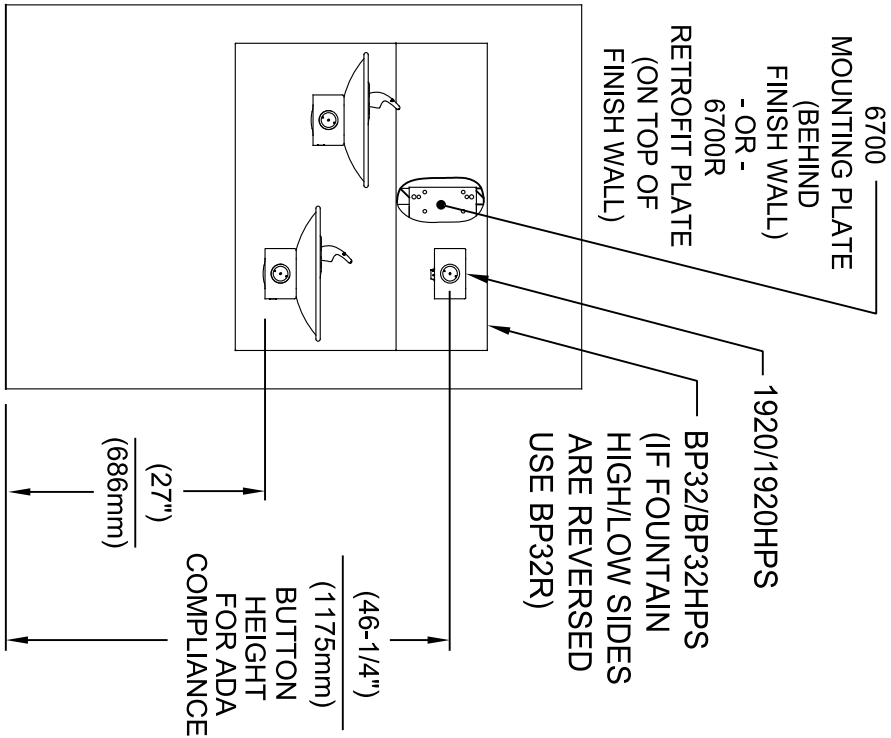
1920 SERIES MOUNTING HOLE LOCATIONS  
(3/8"-16 UNC MOUNTING HARDWARE NOT SUPPLIED)



**NOTES:**

- SEE SHEETS 2 THRU 7 FOR BOTTLE FILLER ADULT ADA HEIGHT APPLICATIONS AND SHEET 8 FOR CHILD ADA HEIGHT APPLICATIONS.
- WHEN INSTALLING THIS UNIT, LOCAL, STATE OR FEDERAL CODES SHOULD BE ADHERED TO FOR INSTALLATION LOCATIONS, WASTE & SUPPLY REQUIREMENTS OTHER THAN SHOWN.

		1455 KLEPPLE LANE SPARKS, NEVADA 89431 (775) 359-4712 FAX (775) 359-7424 E-MAIL: HAWS@HAWSCO.COM WEBSITE: WWW.HAWSCO.COM	
EGN NO. REVISED PER BY: FV 5081 ECN: 5972 DRAWN: DATE: 05/25/16 DS: JC APPROVED: DATE: 04/19/24	MODEL(S) 1920/1920HPS/1920W	SCALE: N/A DRAWING TYPE:	INSTALLATION:
PART NUMBER 0510000490.D REVISION: 12	SIZE: A1 SHEET: 1 OF 8		

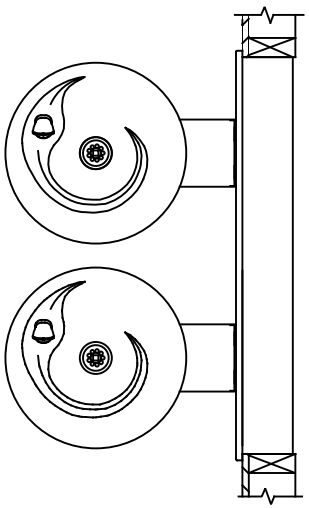


**INSTALLATION ABOVE HAWS 1011 & H1011.8 SERIES**

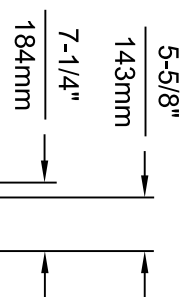
**INSTALLATION ABOVE HAWS 1001 & H1001.8 SERIES**

\* IF YOUR FOUNTAIN IS THIS STYLE USE THESE DIMENSIONS

1. SEE SEPARATE INSTALLATION DRAWINGS FOR MOUNTING PLATES AND BACK PANELS (SHOWN FOR REFERENCE - NOT SUPPLIED).
2. WHEN INSTALLING THIS UNIT, LOCAL, STATE OR FEDERAL CODES SHOULD BE ADHERED TO FOR INSTALLATION LOCATIONS, WASTE & SUPPLY REQUIREMENTS OTHER THAN SHOWN.



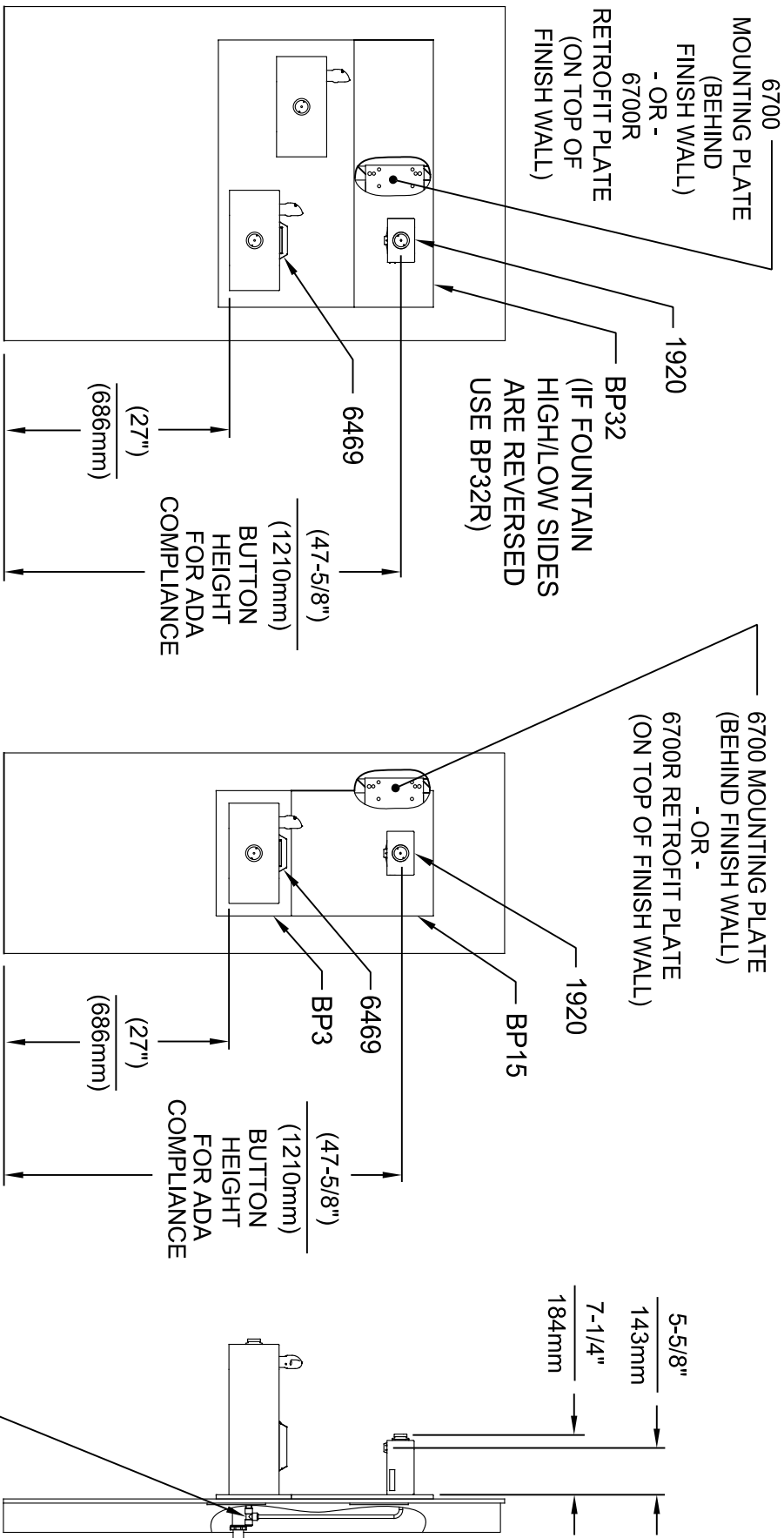
3/8" O.D. SUPPLY TUBING AND 3/8" O.D. PUSH-IN TEE SUPPLIED. (CONNECT TO FOUNTAIN SUPPLY LINE)



**Haws**  
Since 1906

1455 KLEPPLE LANE  
SPARKS, NEVADA 89431  
(775) 359-4712 FAX (775) 359-7424  
E-MAIL: HAWS@HAWS.CO.COM  
WEBSITE: WWW.HAWS.CO.COM

EGN NO. REVISED PER BY:	MODEL(S)	SCALE	DATE	INSTALLATION
5081 EGN: 5972	1920/1920HPS/1920W	N/A	04/19/24	
DRAWN: JC		DRAWING TYPE:		SIZE: A1 SHEET: 2 OF 8
CHK'D: JC				
APPROVED: FV				
DATE: 01/30/17				
PART NUMBER				
0510000490.D				
REVISION:				
12				



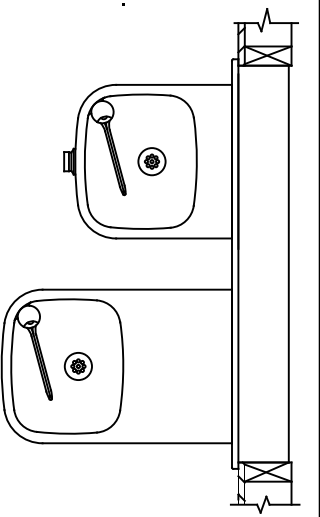
**INSTALLATION ABOVE HAWS 1119 & H1119.8 SERIES**

**INSTALLATION ABOVE HAWS 1109 & H1109.8 SERIES  
SEE SHEET 8 FOR INSTALLATION AT CHILD HEIGHT**

\* IF YOUR FOUNTAIN IS THIS STYLE USE THESE DIMENSIONS

1. SEE SEPARATE INSTALLATION DRAWINGS FOR MOUNTING PLATES AND BACK PANELS (SHOWN FOR REFERENCE - NOT SUPPLIED).

2. WHEN INSTALLING THIS UNIT, LOCAL, STATE OR FEDERAL CODES SHOULD BE ADHERED TO FOR INSTALLATION LOCATIONS, WASTE & SUPPLY REQUIREMENTS OTHER THAN SHOWN.

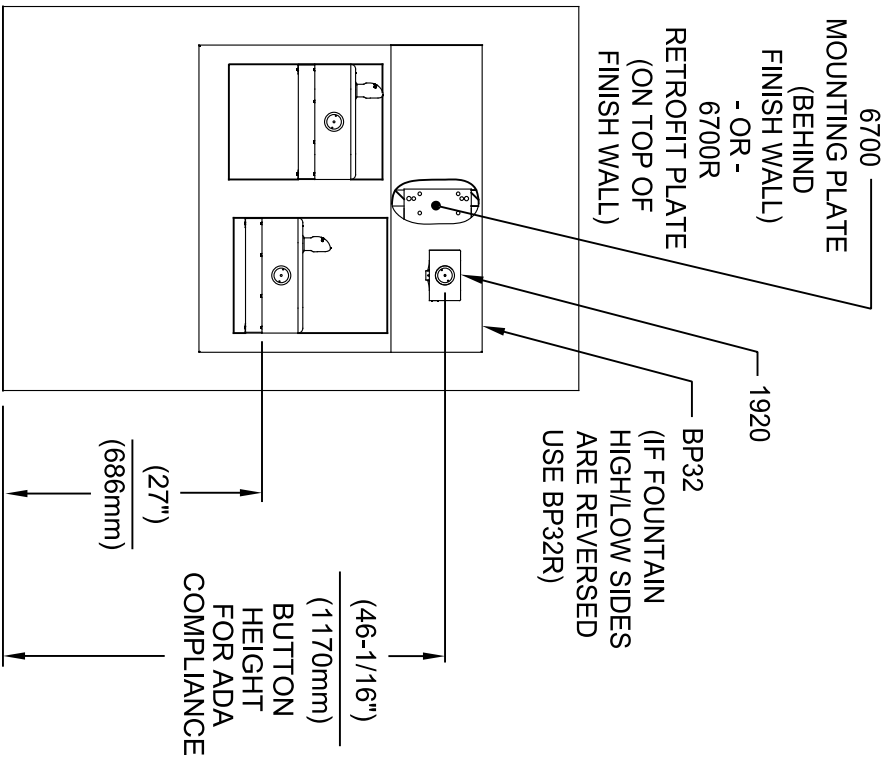


3/8" O.D. SUPPLY TUBING AND 3/8" O.D. PUSH-IN TEE SUPPLIED. (CONNECT TO FOUNTAIN SUPPLY LINE)



1455 KLEPPLE LANE  
SPARKS, NEVADA 89431  
(775) 359-4712 FAX (775) 359-1424  
E-MAIL: HAWS@HAWS.CO.COM  
WEBSITE: WWW.HAWS.CO.COM

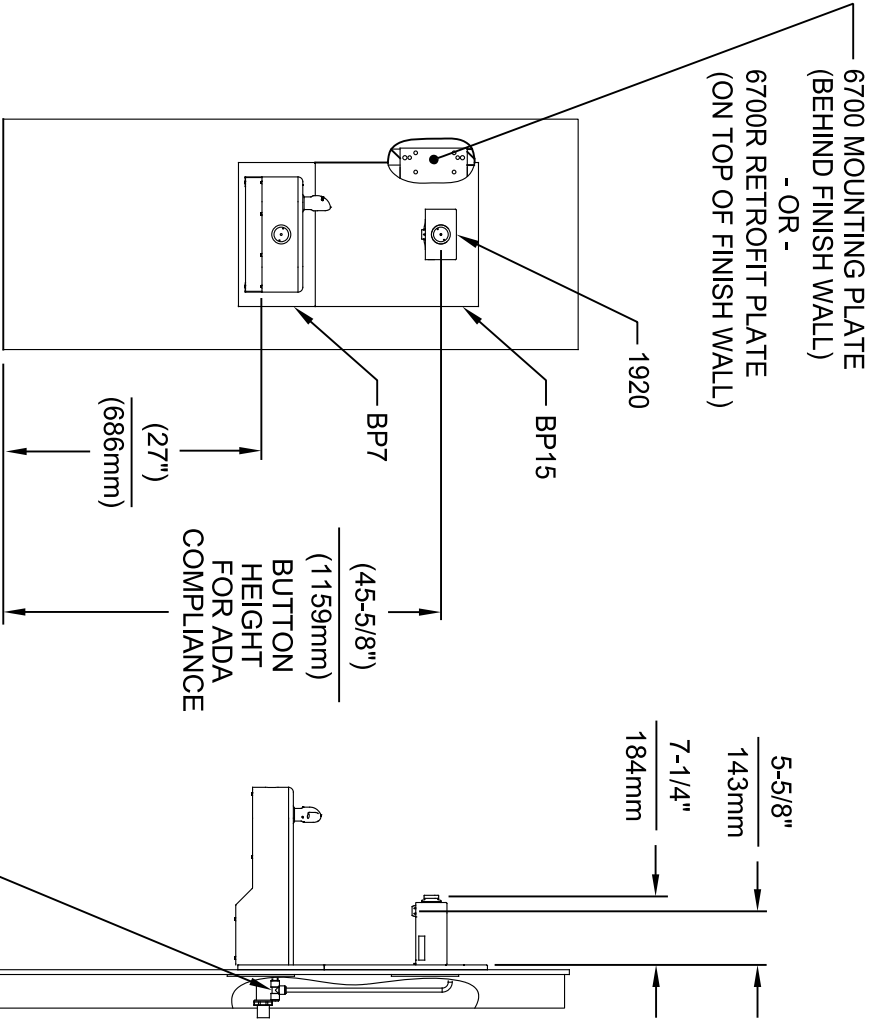
EGN NO. REVISED PER BY:	MODEL(S)	SCALE:	DATE:	INSTALLATION:
5081 FV	1920/1920HPS/1920W	N/A	04/19/24	
DRAWN: M.J.		DRAWING TYPE:		SIZE: A1 SHEET: 3 OF 8
CHKD: J.C.				REVISION: 12
APPROVED: F.V.				
PART NUMBER: 0510000490.D				



**INSTALLATION ABOVE HAWS 1117L & H1117.8 SERIES**

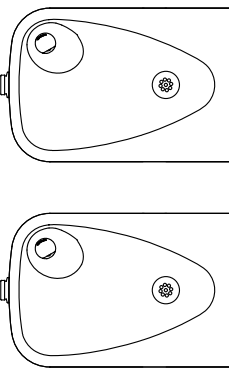
\* IF YOUR FOUNTAIN IS THIS STYLE USE THESE DIMENSIONS

1. SEE SEPARATE INSTALLATION DRAWINGS FOR MOUNTING PLATES AND BACK PANELS (SHOWN FOR REFERENCE - NOT SUPPLIED).
2. WHEN INSTALLING THIS UNIT, LOCAL, STATE OR FEDERAL CODES SHOULD BE ADHERED TO FOR INSTALLATION LOCATIONS, WASTE & SUPPLY REQUIREMENTS OTHER THAN SHOWN.



**INSTALLATION ABOVE HAWS 1107L & H1107.8 SERIES SEE SHEET 8 FOR INSTALLATION AT CHILD HEIGHT**

3/8" O.D. SUPPLY TUBING AND 3/8" O.D. PUSH-IN TEE SUPPLIED. (CONNECT TO FOUNTAIN SUPPLY LINE)



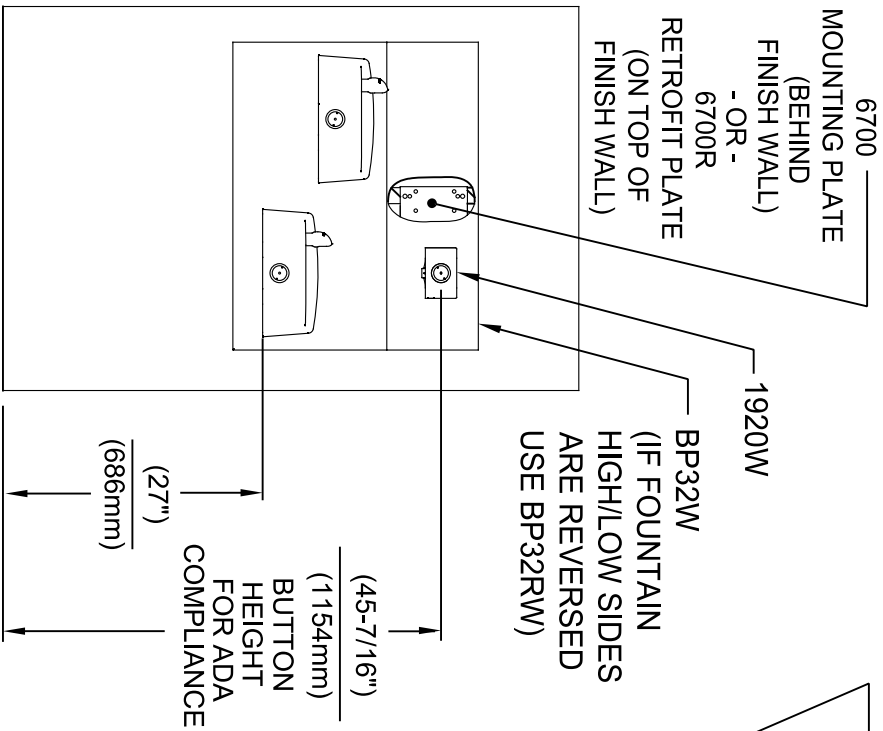
**Haws**  
Since 1906

1455 KLEPPLE LANE  
SPARKS, NEVADA 89431  
(775) 359-4712 FAX (775) 359-424  
E-MAIL: HAWS@HAWSCO.COM  
WEBSITE: WWW.HAWSCO.COM

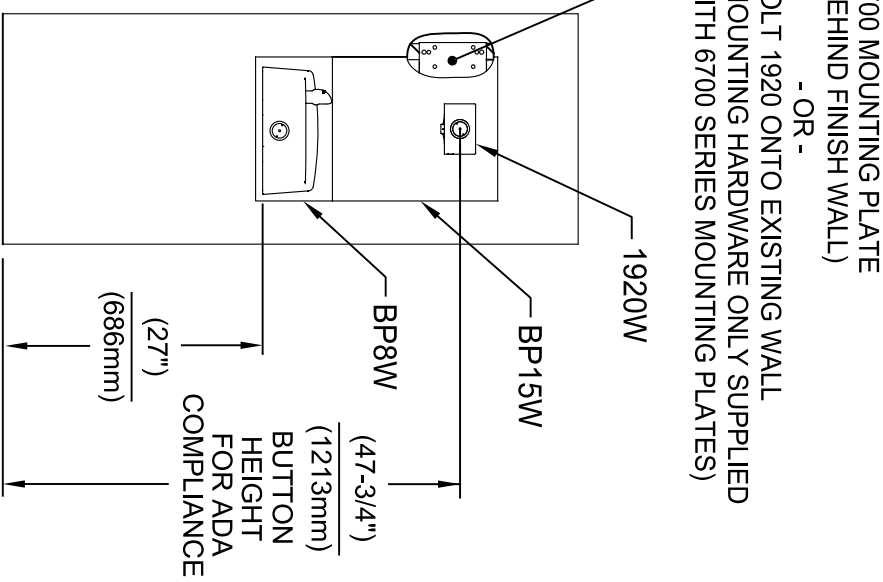
EGN NO. REVISED PER BY:	MODEL(S)	SCALE:	DATE:	DATE:	DATE:
5081			01/30/17	04/19/24	
DRAWN:			DATE:	DATE:	DATE:
ML			01/30/17	04/19/24	
APPROVED:			DATE:	DATE:	DATE:
FV			04/19/24	04/19/24	
			DATE:	DATE:	DATE:
			04/19/24	04/19/24	
			DATE:	DATE:	DATE:
			04/19/24	04/19/24	

1920/1920HPS/1920W

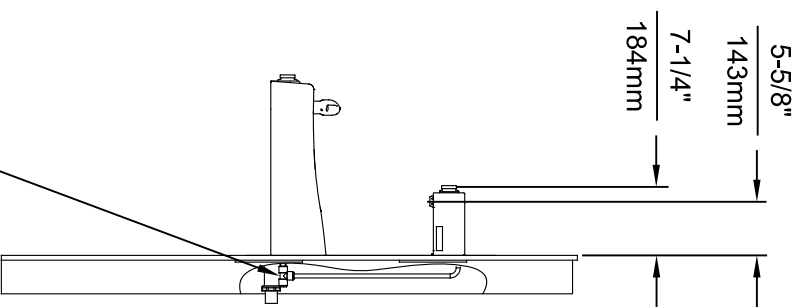
12



**INSTALLATION ABOVE HAWS 1501**



**INSTALLATION ABOVE HAWS 1311  
SEE SHEET 8 FOR INSTALLATION AT CHILD HEIGHT**

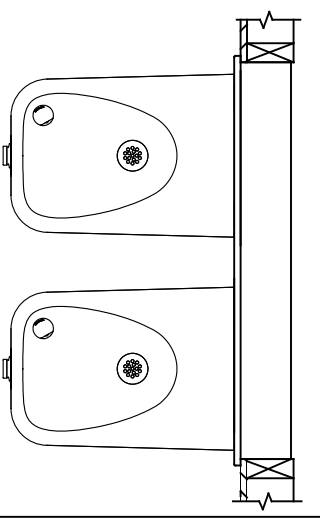


3/8" O.D. SUPPLY TUBING AND 3/8" O.D. PUSH-IN TEE SUPPLIED. (CONNECT TO FOUNTAIN SUPPLY LINE)

\* IF YOUR FOUNTAIN IS THIS STYLE USE THESE DIMENSIONS

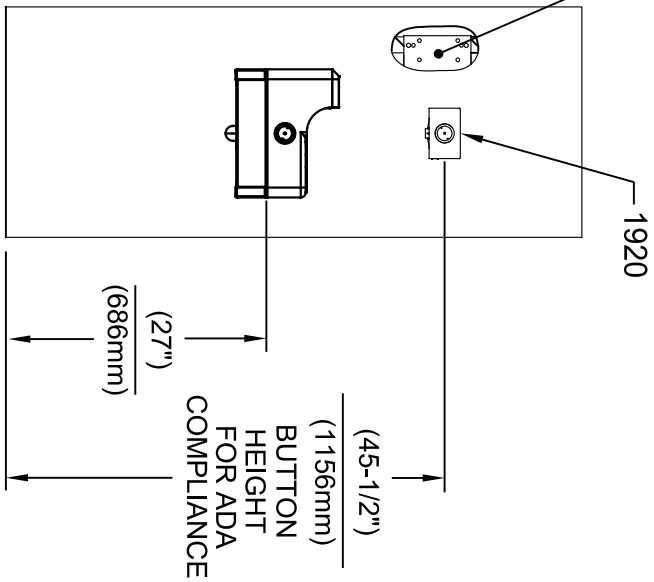
1. SEE SEPARATE INSTALLATION DRAWINGS FOR MOUNTING PLATES AND BACK PANELS (SHOWN FOR REFERENCE - NOT SUPPLIED).

2. WHEN INSTALLING THIS UNIT, LOCAL, STATE OR FEDERAL CODES SHOULD BE ADHERED TO FOR INSTALLATION LOCATIONS, WASTE & SUPPLY REQUIREMENTS OTHER THAN SHOWN.



ECON. NO. REVISED PER BY: FV		MODEL(S)		1455 KLEPPLE LANE	
5081	ECON. 5972	DATE: 02/19/17	DATE: 04/19/24	SCALE: N/A	DRAWING TYPE: INSTALLATION
ML	MC	JC	JC	SIZE: A1	SHEET: 5 OF 8
APPROVED: FV			REVISION: 12		
PART NUMBER: 0510000490.D			REVISION: 12		
SPARKS, NEVADA 89431			PART NUMBER: 0510000490.D		
(775) 359-4712 FAX (775) 359-7424			REVISION: 12		
E-MAIL: HAWS@HAWS.CO.COM			REVISION: 12		
WEBSITE: WWW.HAWS.CO.COM			REVISION: 12		
MODEL(S): 1920/1920HPS/1920W			REVISION: 12		

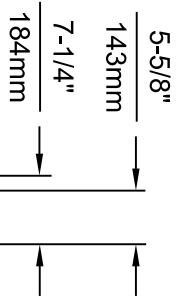
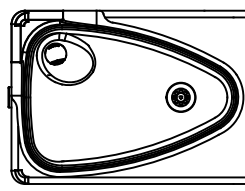
6700 MOUNTING PLATE  
(BEHIND FINISH WALL)  
- OR -  
BOLT 1920 ONTO EXISTING WALL  
(MOUNTING HARDWARE ONLY SUPPLIED  
WITH 6700 SERIES MOUNTING PLATES)



**INSTALLATION ABOVE HAWES 1047**

\* IF YOUR FOUNTAIN IS THIS STYLE USE THESE DIMENSIONS

1. SEE SEPARATE INSTALLATION DRAWINGS FOR MOUNTING PLATES AND BACK PANELS (SHOWN FOR REFERENCE - NOT SUPPLIED).
2. WHEN INSTALLING THIS UNIT, LOCAL, STATE OR FEDERAL CODES SHOULD BE ADHERED TO FOR INSTALLATION LOCATIONS, WASTE & SUPPLY REQUIREMENTS OTHER THAN SHOWN.



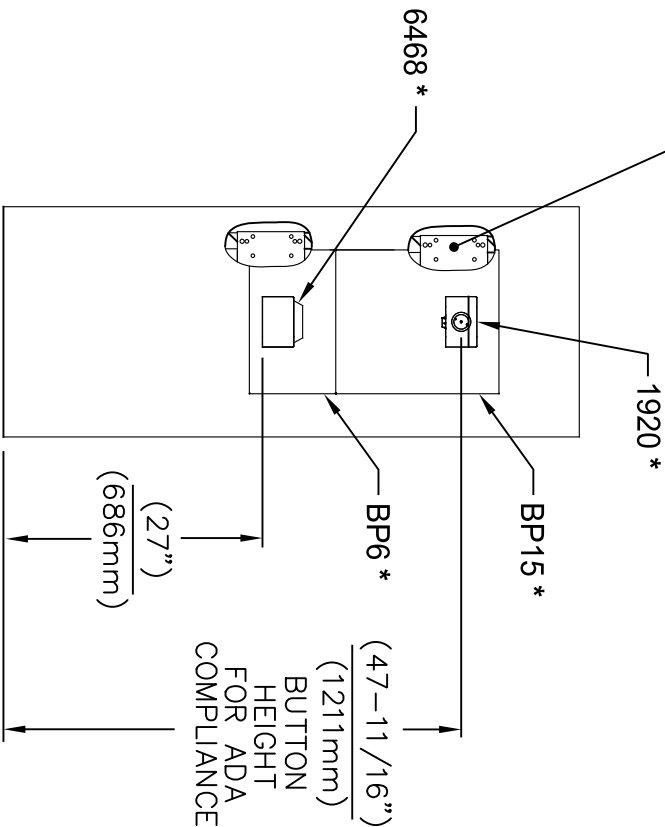
3/8" O.D. SUPPLY TUBING AND 3/8" O.D. PUSH-IN TEE SUPPLIED. (CONNECT TO FOUNTAIN SUPPLY LINE)

		MODEL(S) 1920/1920HPS/1920W	
EGN NO. REVISED PERBY: 5220 FV	DATE: 09/14/17	SCALE: N/A	DRAWING TYPE: INSTALLATION
DRAWN: JP	CHKD: JC	DATE: 09/15/24	SIZE: A1 SHEET 6 OF 8
APPROVED: FV		PART NUMBER: 0510000490.D REVISION: 12	

1455 KLEPPLELANE  
 SPARKS, NEVADA 89431  
 (775) 359-4712 FAX (775) 359-7424  
 E-MAIL: HAWS@HAWS.CO.COM  
 WEBSITE: WWW.HAWS.CO.COM

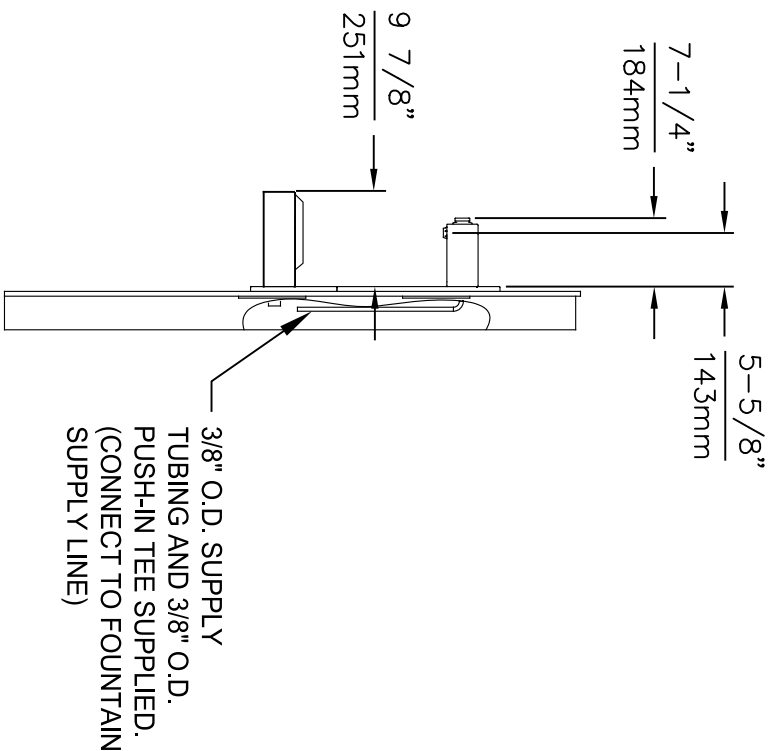
6700 MOUNTING PLATE  
(BEHIND FINISH WALL)  
- OR -  
6700R RETROFIT PLATE  
(ON TOP OF FINISH WALL)

\* MODELS 1920 (BOTTLE FILLER),  
BP15, BP6 (BACK PANELS) AND  
6468 (WASTE DRIP TRAY) ARE  
ALL AVAILABLE TOGETHER AS  
MODEL 1922.



**INSTALLATION ABOVE 6468**

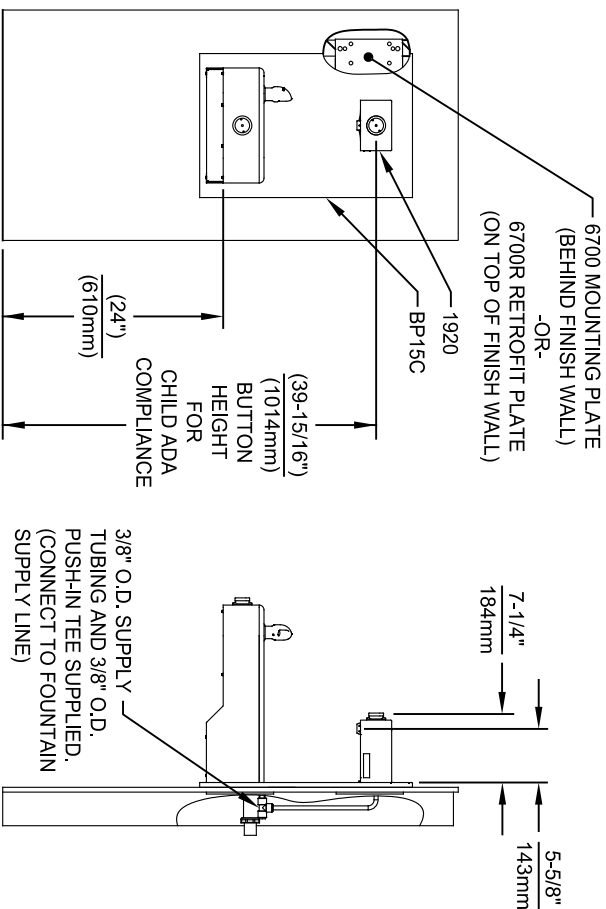
1. SEE SEPARATE INSTALLATION DRAWINGS FOR MOUNTING PLATE, WASTE DRIP TRAY AND BACK PANELS (SHOWN FOR REFERENCE - NOT SUPPLIED).
2. WHEN INSTALLING THIS UNIT, LOCAL, STATE OR FEDERAL CODES SHOULD BE ADHERED TO FOR INSTALLATION LOCATIONS, WASTE & SUPPLY REQUIREMENTS OTHER THAN SHOWN.



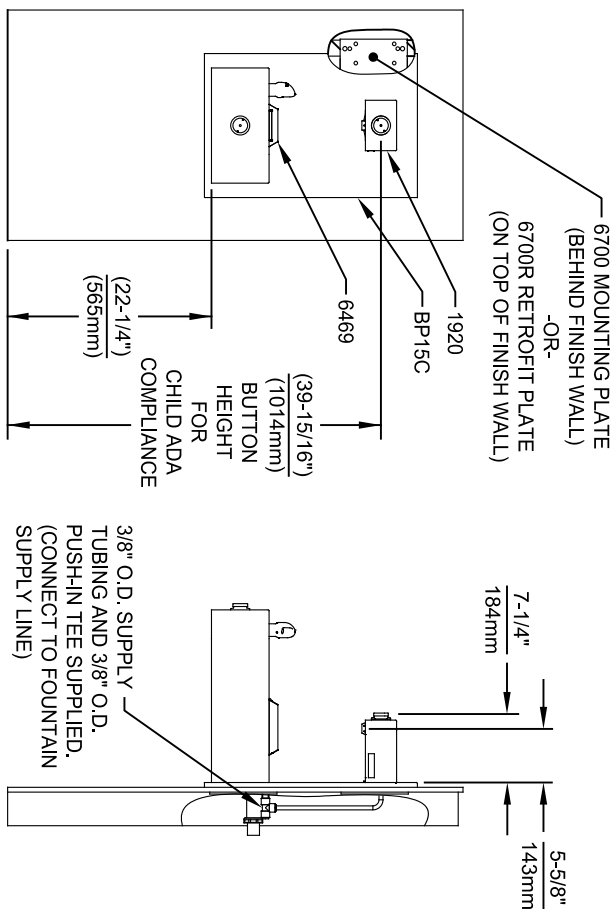
3/8" O.D. SUPPLY  
TUBING AND 3/8" O.D.  
PUSH-IN TEE SUPPLIED.  
(CONNECT TO FOUNTAIN  
SUPPLY LINE)

 <p><b>Haws</b> Since 1906</p>		<p>1455 KLEPPLE LANE SPARKS, NEVADA 89431 (775) 359-4712 FAX (775) 359-7424 E-MAIL: HAWS@HAWSCO.COM WEBSITE: WWW.HAWSCO.COM</p>	
ECON NO. REVISED PER BY:	FV	MODEL(S)	INSTALLATION
5807	ECON: 5972	1920/1920HPS/1920W	
DRAWN:	DATE:	CHK'D:	
DP	10/27/20	JC	
APPROVED:	DATE:	SCALE:	DRAWING TYPE:
FV	04/19/24	N/A	
<p>REVISION:</p>		<p>PART NUMBER</p>	
<p>12</p>		<p>0510000490 D</p>	

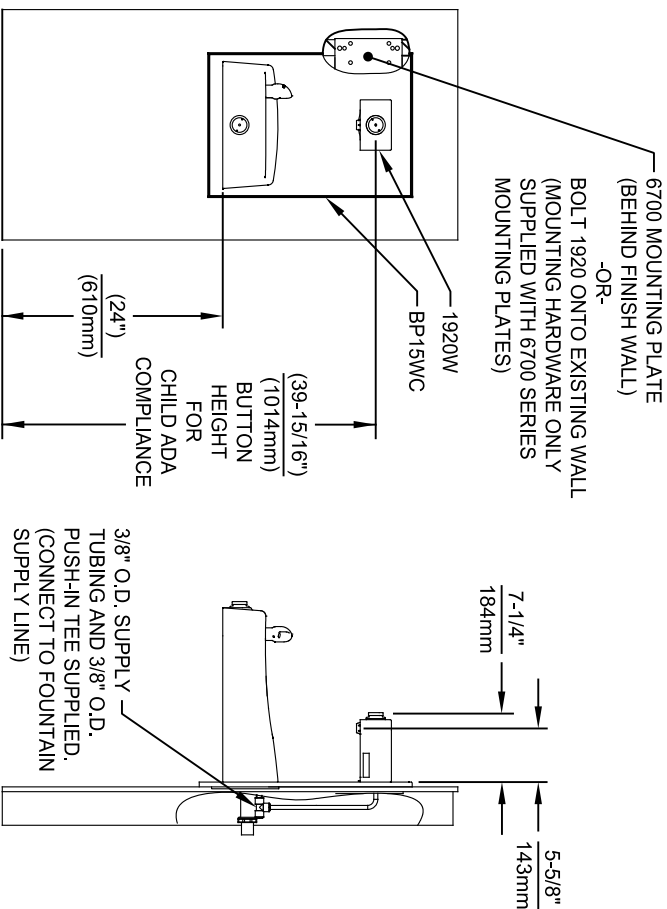




INSTALLATION ABOVE HAWS 1107L & H1107.8 SERIES



INSTALLATION ABOVE HAWS 1109, 1109.14 & H1109.8 SERIES



INSTALLATION ABOVE HAWS 1311

- NOTES:
- HEIGHT DIMENSIONS SHOWN ARE FOR CHILD ADA APPLICATIONS:  
- BOTTLE FILLER HEIGHT AT 40" MAX.  
- DRINKING FOUNTAIN BUBBLER HEIGHT AT 30" MAX.  
(SEE SHEETS 3, 4 & 5 FOR ADULT ADA HEIGHT DIMENSIONS)
  - SEE SEPARATE INSTALLATION DRAWINGS FOR MOUNTING PLATES AND BACK PANELS (SHOWN FOR REFERENCE - NOT SUPPLIED).
  - WHEN INSTALLING THIS UNIT, LOCAL, STATE OR FEDERAL CODES SHOULD BE ADHERED TO FOR INSTALLATION LOCATIONS, WASTE & SUPPLY REQUIREMENTS OTHER THAN SHOWN.

**Haws**  
Since 1906

1455 KLEPPLE PLANE  
SPARKS, NEVADA 89431  
(775) 359-4712 FAX (775) 359-424  
E-MAIL: HAWS@HAWSCO.COM  
WEBSITE: WWW.HAWSCO.COM

ECN NO. REVISED PER BY:	MODEL(S)	SCALE:	DATE:	INSTALLATION:	SIZE:	SHEET:
9807	1920/1920HPS/1920W	N/A	04/19/24		A1	8 OF 8
DRAWN:	DATE:	CHK'D:	DATE:	REVISION:		
FV	01/26/24	JC		12		
APPROVED:	DATE:	SCALE:	N/A	DRAWING TYPE:		
FV	04/19/24					
PART NUMBER:	05110000490 D					