

## FEATURES & BENEFITS

### CONSTRUCTION

Unit is made of 14 gauge Type 304 high polished stainless steel with a satin finish that resists stains and corrosion, and has soft rounded corners. Unit features vandal-resistant bottom plate and dispensing nozzle.

### VANDAL RESISTANT

30-second obstruction time-out to reduce tampering of sensor, and the push button and bottom plate are locked in place, discouraging unwanted vandal tampering.

### EFFICIENT & FLEXIBLE INSTALLATION

Unit is designed for retrofit or new construction applications. No drain required for mounting over existing drinking fountain.

### LAMINAR FLOW

Adjustable, splash-free, 1 gpm (3.78 L) laminar water flow.

### MOUNTING OPTIONS

Select from mounting plate and back panel models to complete installation. Unit can mount on various wall types.

## OPTIONS

- Water Filter: Model 6480 filter kit with 3000 gallon carbon block filter, filter head, and mounting bracket.
- Mounting Plate: Model 6700 in-wall mounting plate is used with the 1920 series bottle fillers for single or dual fountain retrofit installations.
- Mounting Plate: Model 6700R on-wall mounting plate is used with the 1920 series bottle fillers for single or dual fountain retrofit installations.
- Back Panel: Model BP15HPS, high polished stainless steel 15 inch back panel for Model 1920HPSHO over single fountains.
- Back Panel: Model BP32HPS, high polished stainless steel 32" back panel for model 1920HPSHO bottle filler over dual fountains.

For more information, visit [www.hawasco.com](http://www.hawasco.com) or call (888) 640-4297.



## SPECIFICATIONS

Model 1920HPSHO motion-activated wall mounted vandal-resistant bottle filler shall include 100% lead-free waterways, high polished stainless-steel construction, touchless sensor operated stainless steel solenoid valve with 30-second obstruction time-out controlled by a transformer, 1 gpm (3.78 L) laminar flow. It can be used as a stand-alone station or mounted above the Haws 1001HPS and 1011HPS series drinking fountains.

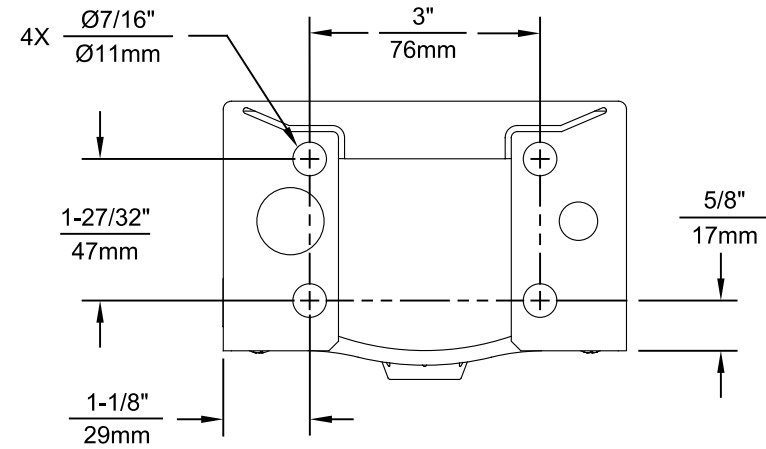
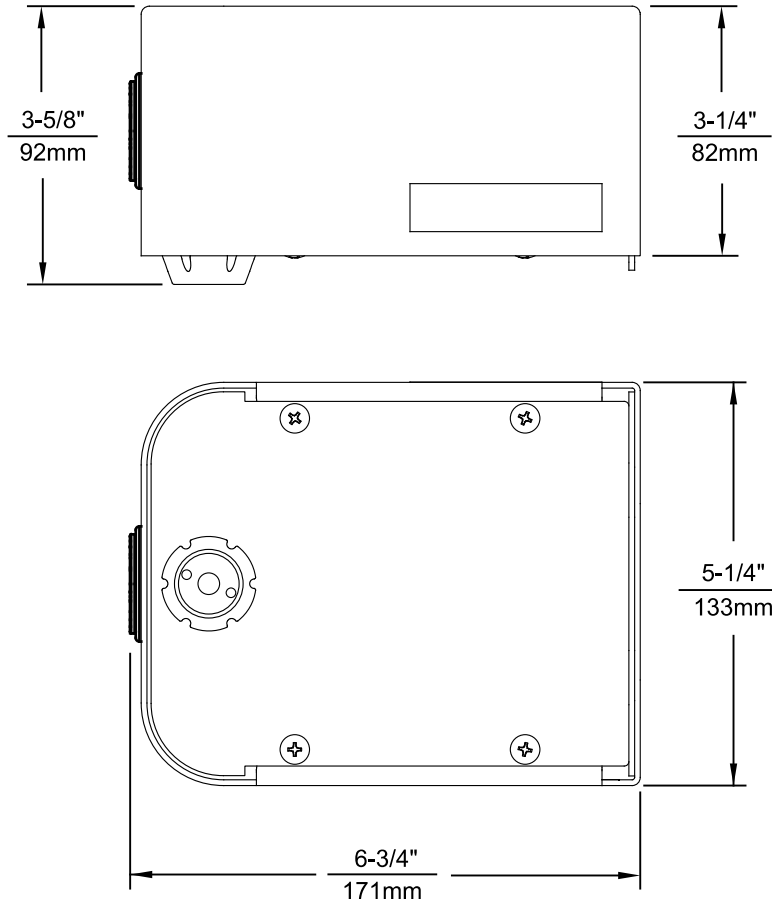
**This product requires a mounting plate; either the Haws model 6700 in-wall or the 6700R on-wall support plate.**

**FOR INDOOR USE ONLY**

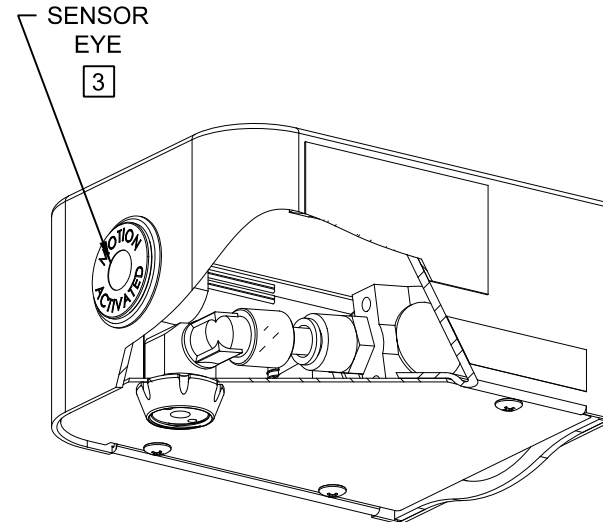
## APPLICATIONS

This type of wall mounted bottle filler may be placed in settings such as schools and other locations in and around office buildings with existing fountain installations where the temperature remains above freezing. Haws manufactures drinking fountains, faucets and electric water coolers to be lead-free by all known definitions including NSF/ANSI/CSA 61-Section 9, NSF/ANSI/CSA 372, California Proposition 65, and the Federal Safe Drinking Water Act. Product is compliant to California Health and Safety Code 116875 (AB 1953-2006), and 116876 (AB 100) "NSF/ANSI/CAN 61: Q ≤ 1"






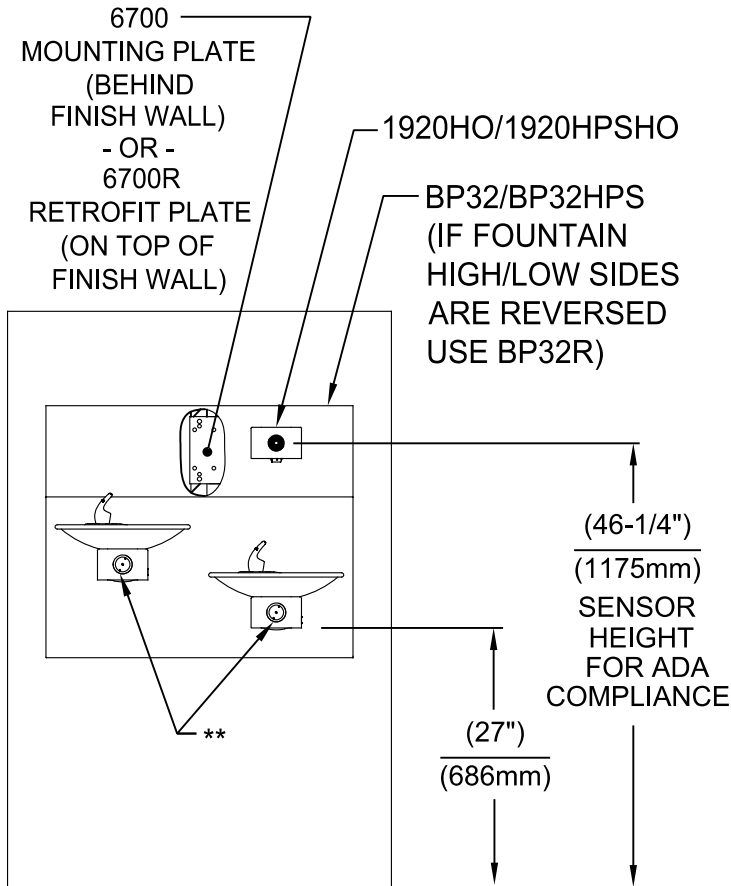
1920HO SERIES MOUNTING HOLE LOCATIONS  
(3/8"-16 UNC MOUNTING HARDWARE NOT SUPPLIED)



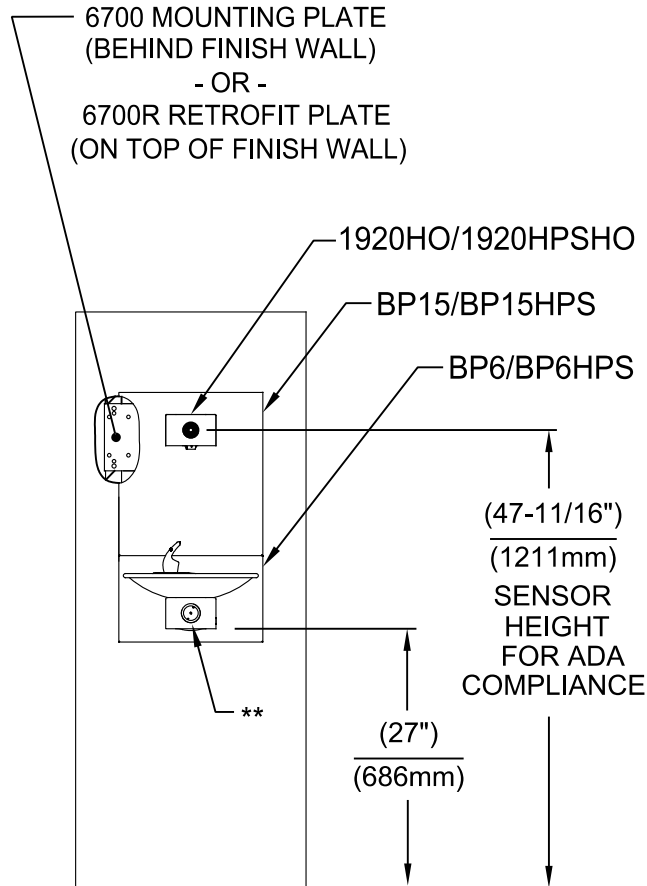
NOTES:

1. SEE SHEETS 2 THRU 7 FOR BOTTLE FILLER ADULT ADA HEIGHT APPLICATIONS AND SHEET 8 FOR CHILD ADA HEIGHT APPLICATIONS.
  2. WHEN INSTALLING THIS UNIT, LOCAL, STATE OR FEDERAL CODES SHOULD BE ADHERED TO FOR INSTALLATION LOCATIONS, WASTE AND SUPPLY REQUIREMENTS OTHER THAN SHOWN.
- 3** REFER TO 1RKHO.H OPERATION & MAINTENANCE INSTRUCTIONS FOR SENSOR SETUP.

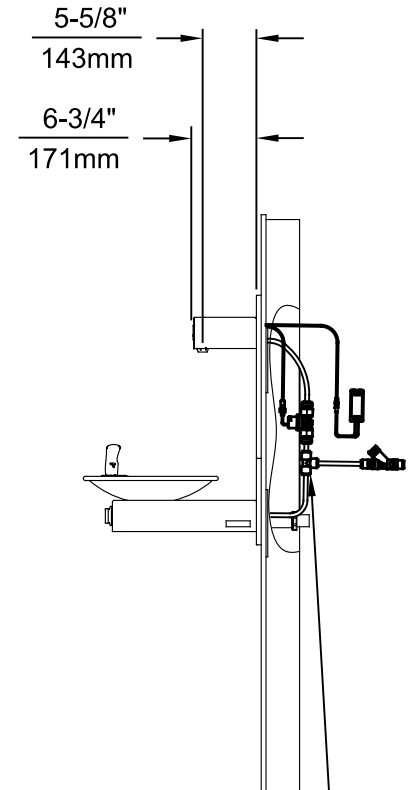
				<div>1455 KLEPPE LANE SPARKS, NEVADA 89431 (775) 359-4712 FAX (775) 359-7424 E-MAIL: HAWS@HAWS.CO.COM WEBSITE: WWW.HAWS.CO.COM</div>			
ECN NO. 5574		REVISED PER BY: ECN: 6136 FV		MODEL(S) 1920HO/1920HPSHO/1920WHO		PART NUMBER 0510001063.D	
DRAWN: FV		DATE: 08/18/20		CHK'D: KM		REVISION 8	
APPROVED: FV		DATE: 11/04/24		SCALE: N/A		DRAWING TYPE: INSTALLATION	
				SIZE: A		SHEET 1 OF 8	



**INSTALLATION ABOVE HAWS 1011 & H1011.8 SERIES**

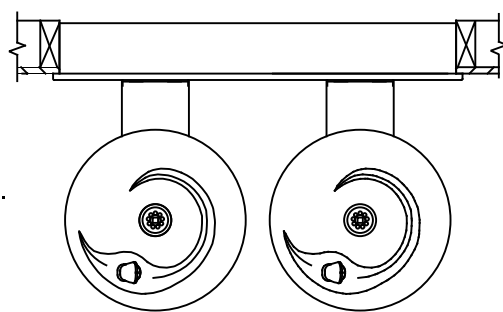


**INSTALLATION ABOVE HAWS 1001 & H1001.8 SERIES**



\* IF YOUR FOUNTAIN IS THIS STYLE USE THESE DIMENSIONS

1. SEE SEPARATE INSTALLATION DRAWINGS FOR MOUNTING PLATES AND BACK PANELS (SHOWN FOR REFERENCE - NOT SUPPLIED).
2. WHEN INSTALLING THIS UNIT, LOCAL, STATE OR FEDERAL CODES SHOULD BE ADHERED TO FOR INSTALLATION LOCATIONS, WASTE & SUPPLY REQUIREMENTS OTHER THAN SHOWN.



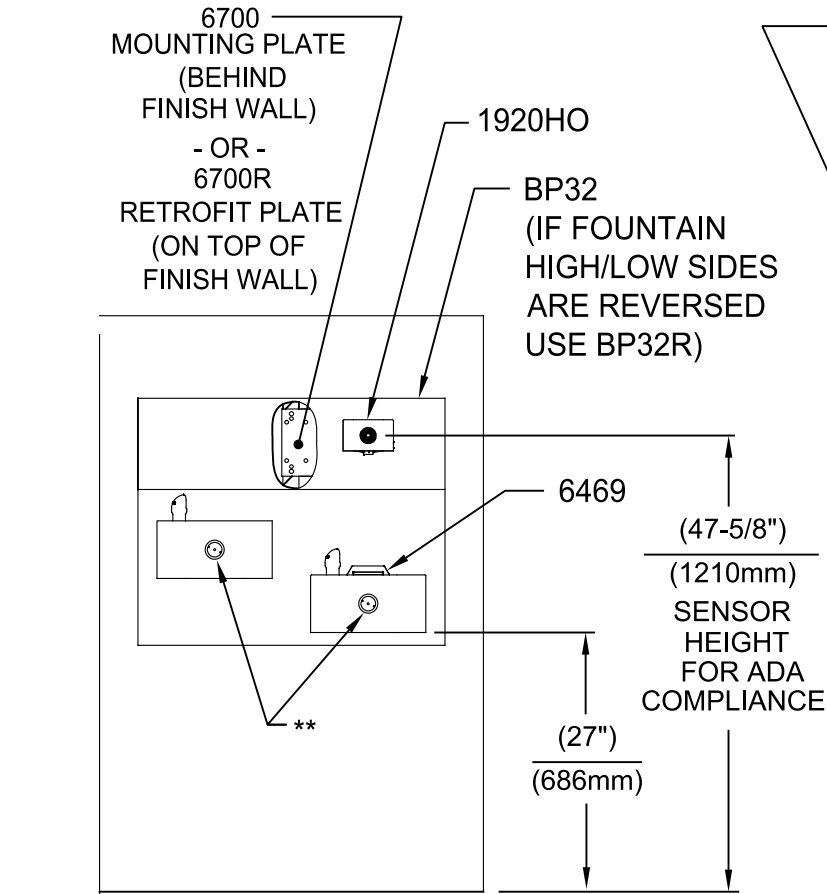
\*\* EXISTING PUSH BUTTON ASSEMBLY SHOWN, CAN BE CONVERTED TO HANDS OFF STYLE, USING RETRO-FIT KIT MODEL 1RKHO.H OR 2RKHO.H DEPENDING ON CUSTOMER REQUIREMENTS.

3/8" O.D. SUPPLY TUBING AND 3/8" O.D. PUSH-IN TEE SUPPLIED. (CONNECT TO FOUNTAIN SUPPLY LINE)

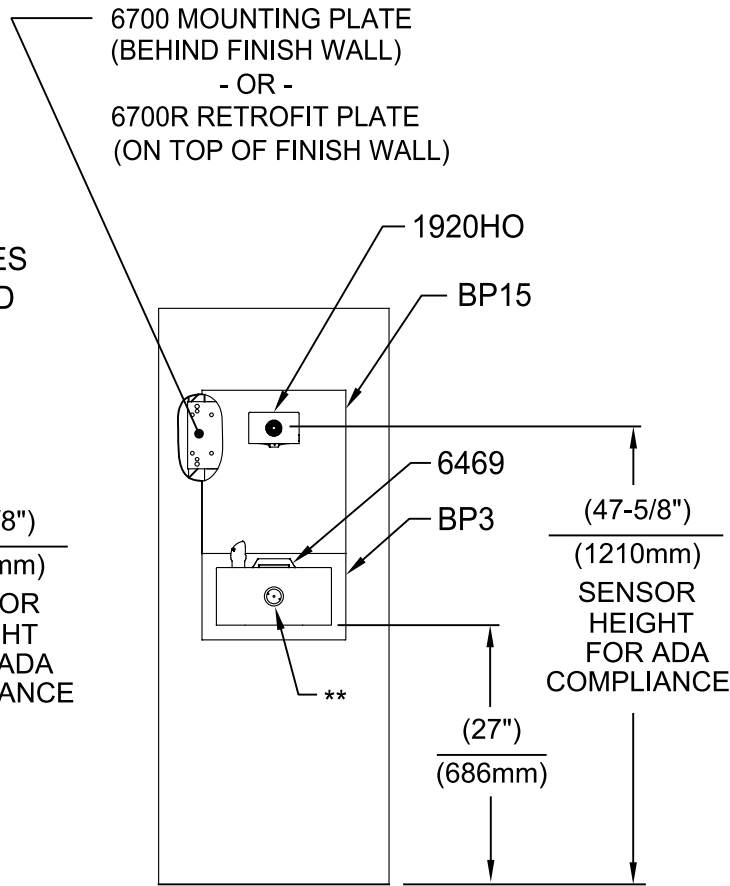


1455 KLEPPE LANE  
SPARKS, NEVADA 89431  
(775) 359-4712 FAX (775) 359-7424  
E-MAIL: HAWS@HAWS.CO.COM  
WEBSITE: WWW.HAWS.CO.COM

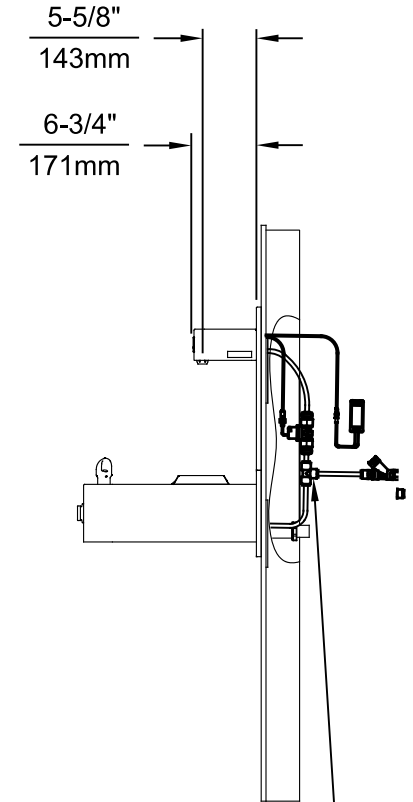
ECN NO. 5574	REVISED PER BY: ECN: 6136 FV	MODEL(S) 1920HO/1920HPSHO/1920WHO	PART NUMBER 0510001063.D
DRAWN: FV	DATE: 08/18/20 CHK'D: KM		REVISION 8
APPROVED: FV	DATE: 11/04/24	SCALE: N/A DRAWING TYPE: INSTALLATION	SIZE: A SHEET 2 OF 8



**INSTALLATION ABOVE HAWS 1119 & H1119.8 SERIES**

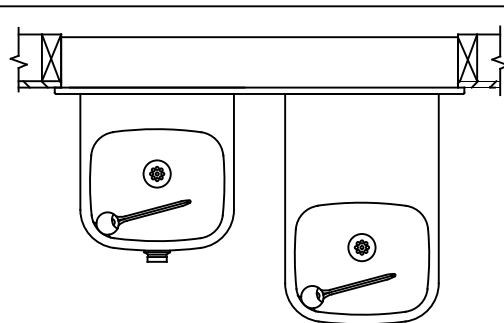


**INSTALLATION ABOVE HAWS 1109 & H1109.8 SERIES  
SEE SHEET 8 FOR INSTALLATION AT CHILD HEIGHT**



\* IF YOUR FOUNTAIN IS THIS STYLE USE THESE DIMENSIONS

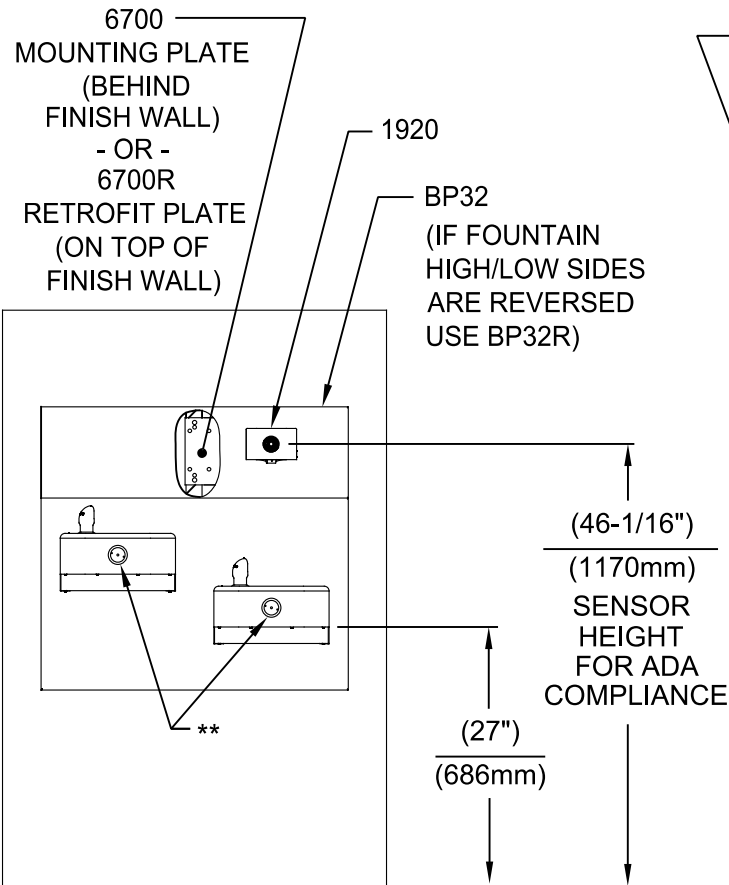
1. SEE SEPARATE INSTALLATION DRAWINGS FOR MOUNTING PLATES, BACK PANELS AND DRIP TRAY (NOT SUPPLIED).
2. WHEN INSTALLING THIS UNIT, LOCAL, STATE OR FEDERAL CODES SHOULD BE ADHERED TO FOR INSTALLATION LOCATIONS, WASTE & SUPPLY REQUIREMENTS OTHER THAN SHOWN.



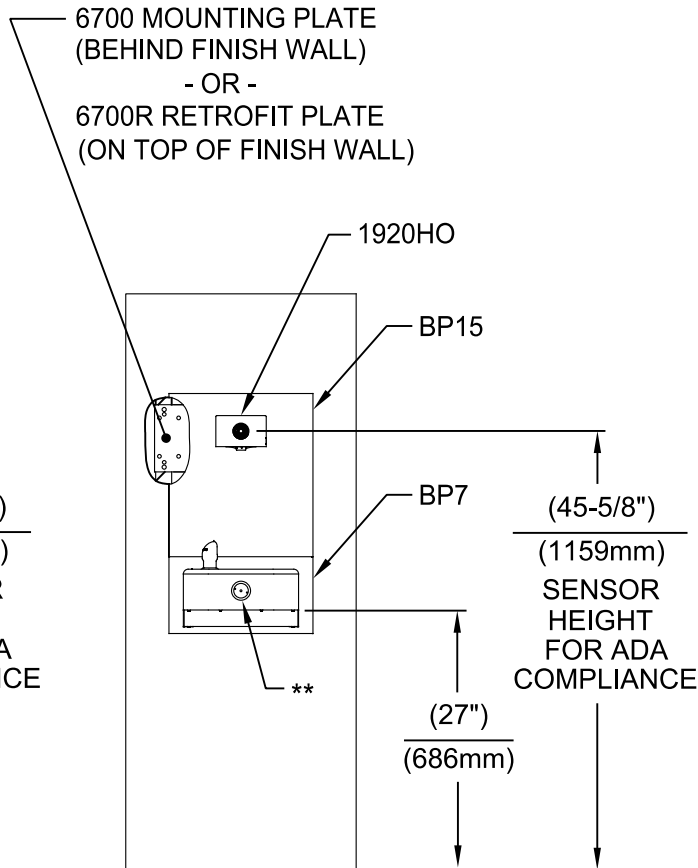
\*\* EXISTING PUSH BUTTON ASSEMBLY SHOWN, CAN BE CONVERTED TO HANDS OFF STYLE, USING RETROFIT KIT MODEL 1RKHO.H OR 2RKHO.H DEPENDING ON CUSTOMER REQUIREMENTS.



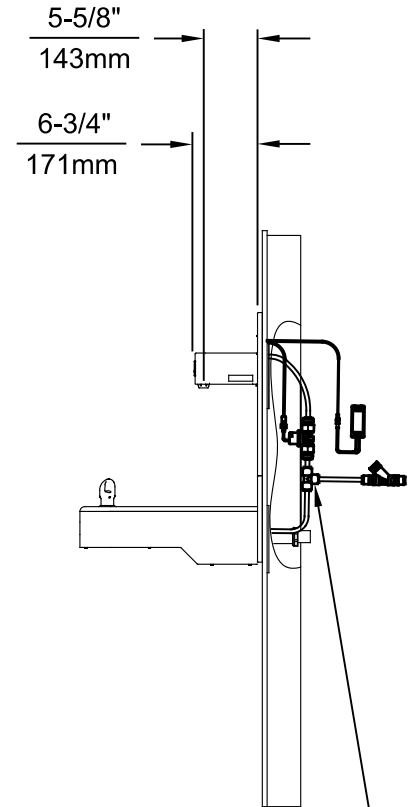
ECN NO. 5574	REVISED PER ECN: 6136	BY: FV	MODEL(S) 1920HO/1920HPSHO/1920WHO	PART NUMBER 0510001063.D
DRAWN: FV	DATE: 08/18/20	CHK'D: KM		REVISION 8
APPROVED: FV	DATE: 11/04/24	SCALE: N/A	DRAWING TYPE: INSTALLATION	SIZE: A SHEET 3 OF 8



**INSTALLATION ABOVE HAWS 1117L & H1117.8 SERIES**

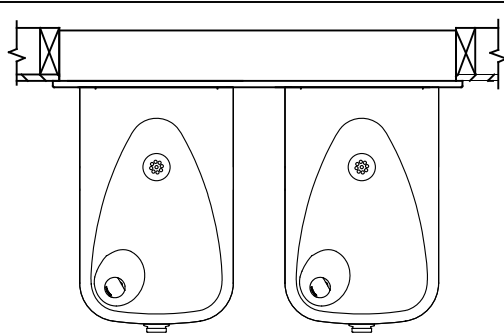


**INSTALLATION ABOVE HAWS 1107L & H1107.8 SERIES  
SEE SHEET 8 FOR INSTALLATION AT CHILD HEIGHT**



\* IF YOUR FOUNTAIN IS THIS STYLE USE THESE DIMENSIONS

1. SEE SEPARATE INSTALLATION DRAWINGS FOR MOUNTING PLATES AND BACK PANELS (SHOWN FOR REFERENCE - NOT SUPPLIED).
2. WHEN INSTALLING THIS UNIT, LOCAL, STATE OR FEDERAL CODES SHOULD BE ADHERED TO FOR INSTALLATION LOCATIONS, WASTE & SUPPLY REQUIREMENTS OTHER THAN SHOWN.

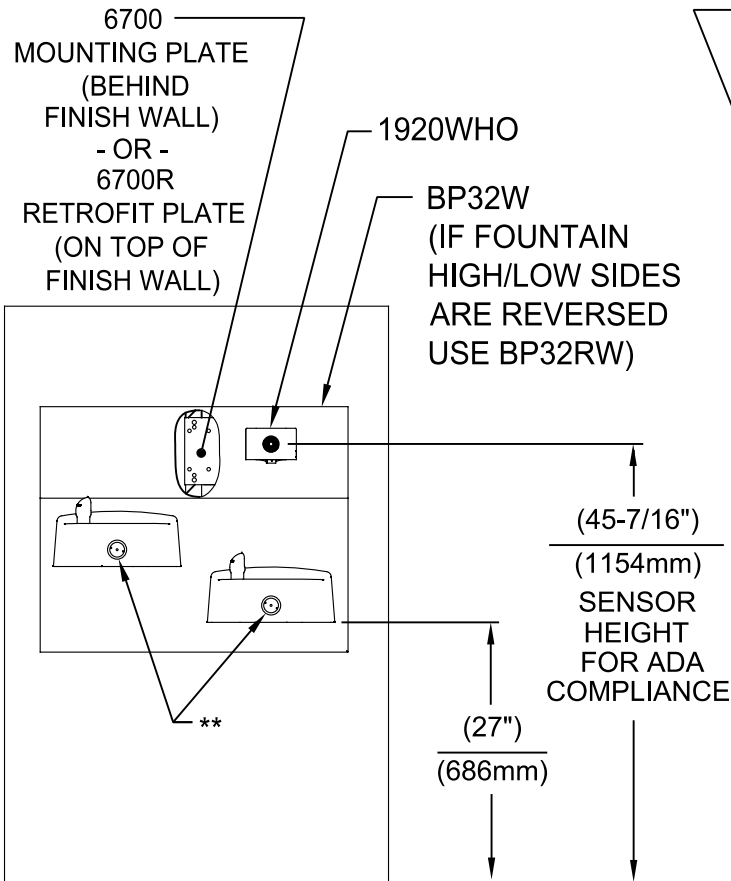


\*\* EXISTING PUSH BUTTON ASSEMBLY SHOWN, CAN BE CONVERTED TO HANDS OFF STYLE, USING RETRO-FIT KIT MODEL 1RKHO.H OR 2RKHO.H DEPENDING ON CUSTOMER REQUIREMENTS.

3/8" O.D. SUPPLY TUBING AND 3/8" O.D. PUSH-IN TEE SUPPLIED. (CONNECT TO FOUNTAIN SUPPLY LINE)

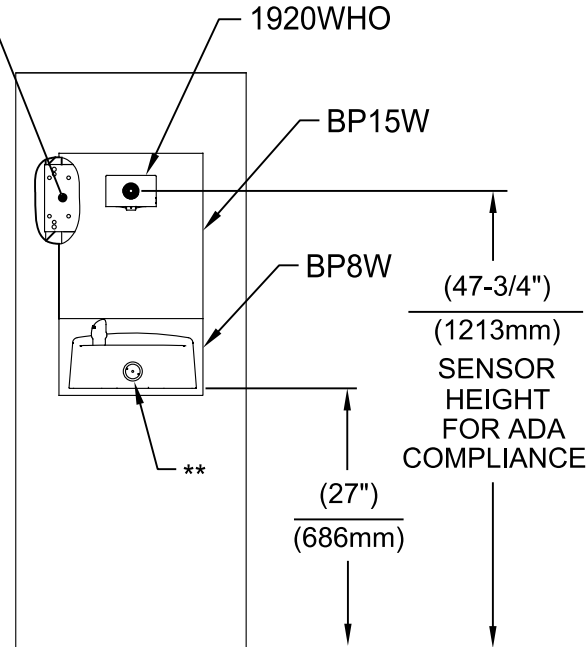


ECN NO. 5574	REVISED PER BY: ECN: 6136 FV	MODEL(S) 1920HO/1920HPSHO/1920WHO	PART NUMBER 0510001063.D
DRAWN: FV	DATE: 08/18/20	CHK'D: KM	REVISION 8
APPROVED: FV	DATE: 11/04/24	SCALE: N/A	DRAWING TYPE: INSTALLATION
		SIZE: A	SHEET 4 OF 8

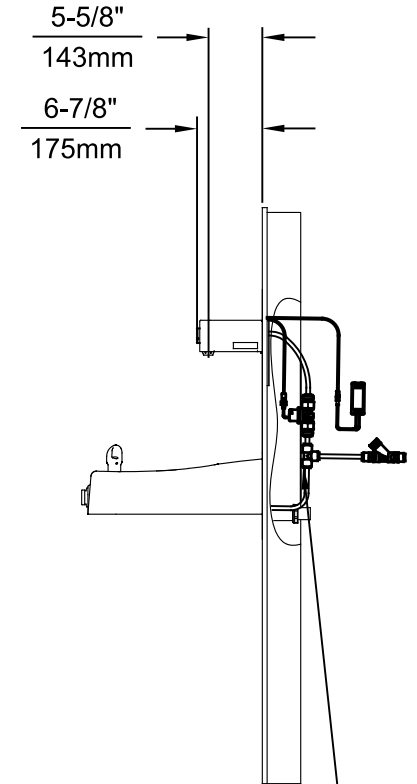


**INSTALLATION ABOVE HAWS 1501**

6700 MOUNTING PLATE  
(BEHIND FINISH WALL)  
- OR -  
BOLT 1920WHO ONTO EXISTING WALL  
(MOUNTING HARDWARE ONLY SUPPLIED  
WITH 6700 SERIES MOUNTING PLATES)



**INSTALLATION ABOVE HAWS 1311  
SEE SHEET 8 FOR INSTALLATION AT CHILD HEIGHT**

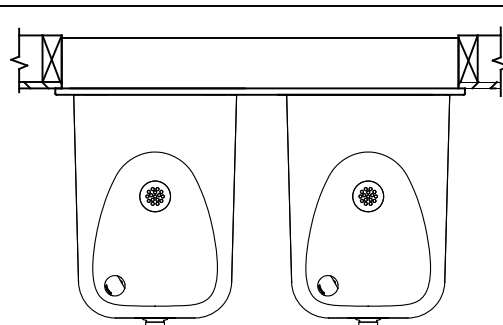


\*\* EXISTING PUSH BUTTON ASSEMBLY SHOWN, CAN BE CONVERTED TO HANDS OFF STYLE, USING RETRO-FIT KIT MODEL 1RKHO.H OR 2RKHO.H DEPENDING ON CUSTOMER REQUIREMENTS.

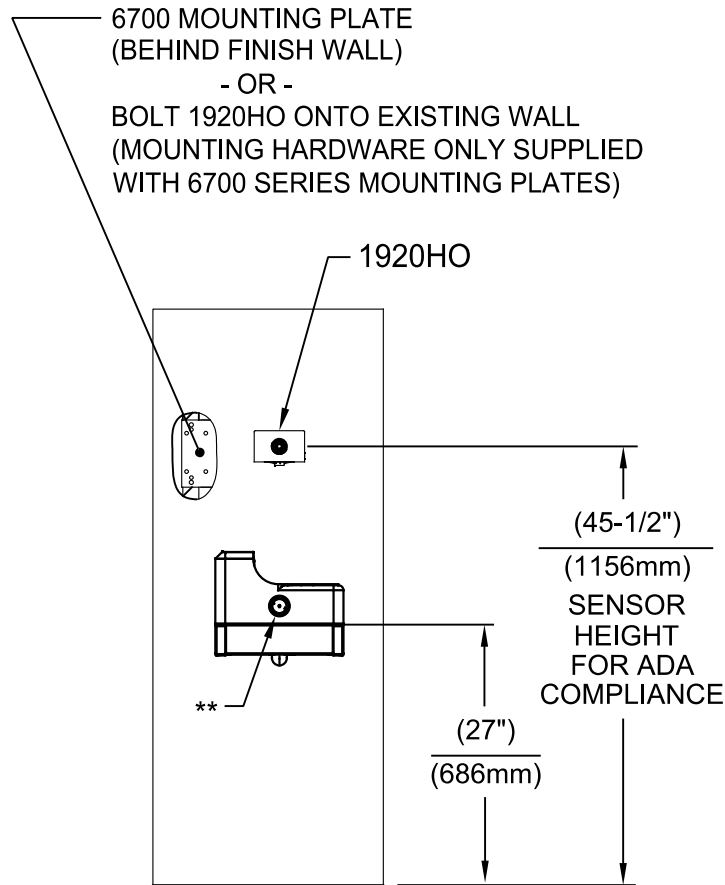
3/8" O.D. SUPPLY TUBING AND 3/8" O.D. PUSH-IN TEE SUPPLIED. (CONNECT TO FOUNTAIN SUPPLY LINE)

\* IF YOUR FOUNTAIN IS THIS STYLE USE THESE DIMENSIONS

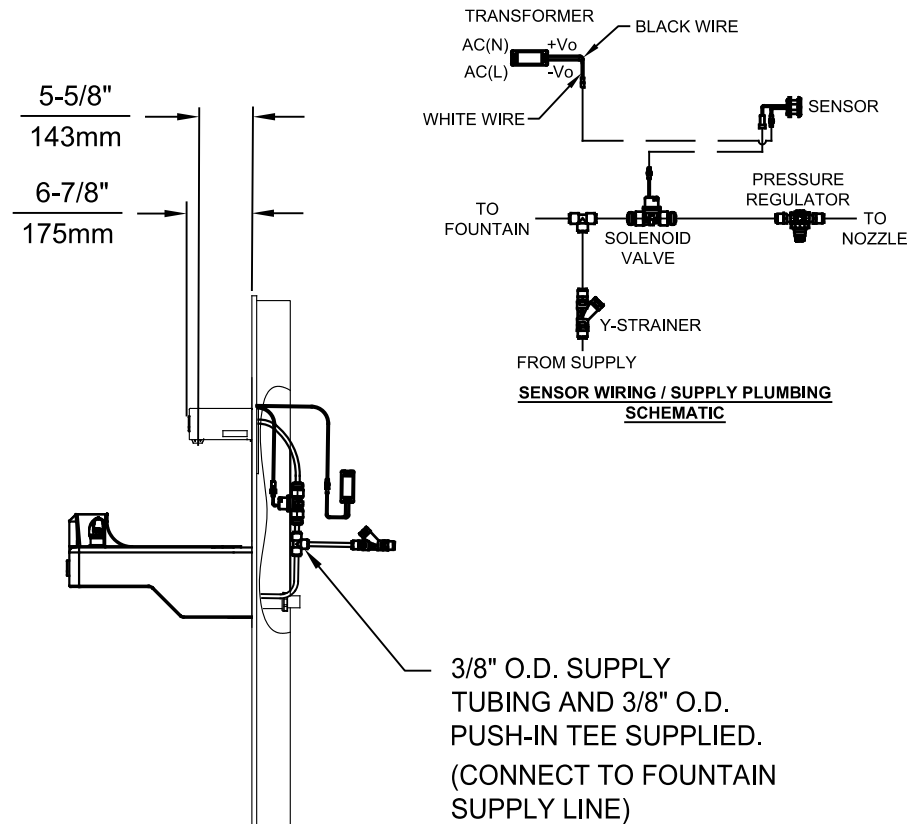
1. SEE SEPARATE INSTALLATION DRAWINGS FOR MOUNTING PLATES AND BACK PANELS (SHOWN FOR REFERENCE - NOT SUPPLIED).
2. WHEN INSTALLING THIS UNIT, LOCAL, STATE OR FEDERAL CODES SHOULD BE ADHERED TO FOR INSTALLATION LOCATIONS, WASTE & SUPPLY REQUIREMENTS OTHER THAN SHOWN.



ECN NO. 5574	REVISED PER BY: ECN: 6136 FV	MODEL(S) 1920HO/1920HPSHO/1920WHO	PART NUMBER 0510001063.D
DRAWN: FV	DATE: 08/18/20	CHK'D: KM	REVISION 8
APPROVED: FV	DATE: 11/04/24	SCALE: N/A	DRAWING TYPE: INSTALLATION
		SIZE: A	SHEET 5 OF 8



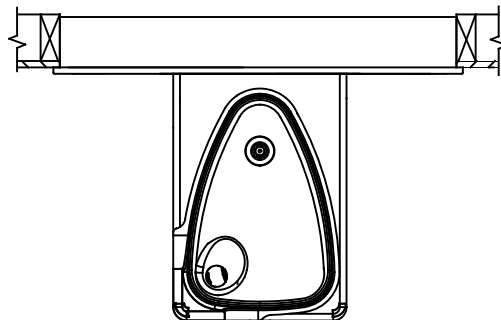
**INSTALLATION ABOVE HAWS 1047**




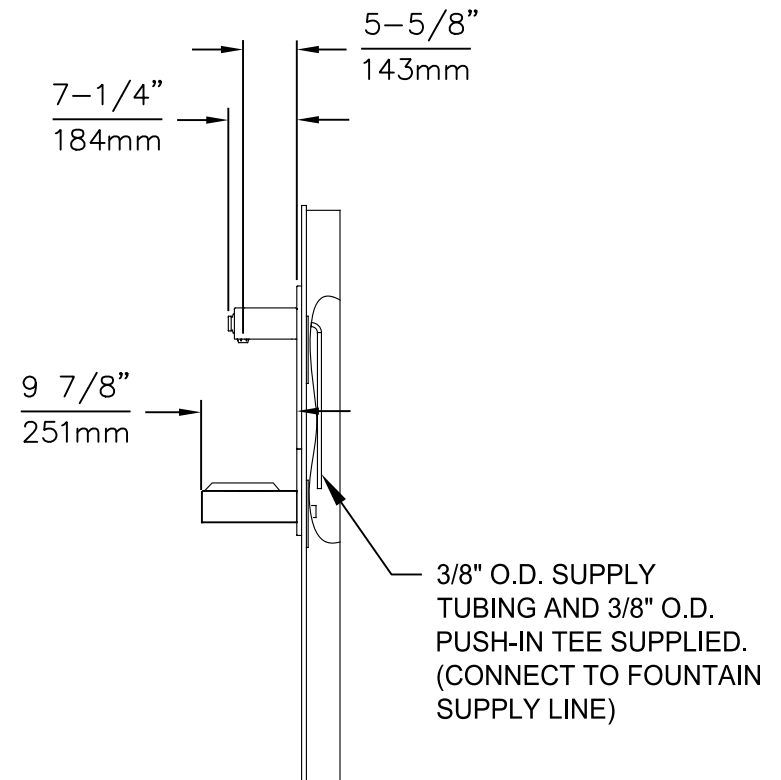
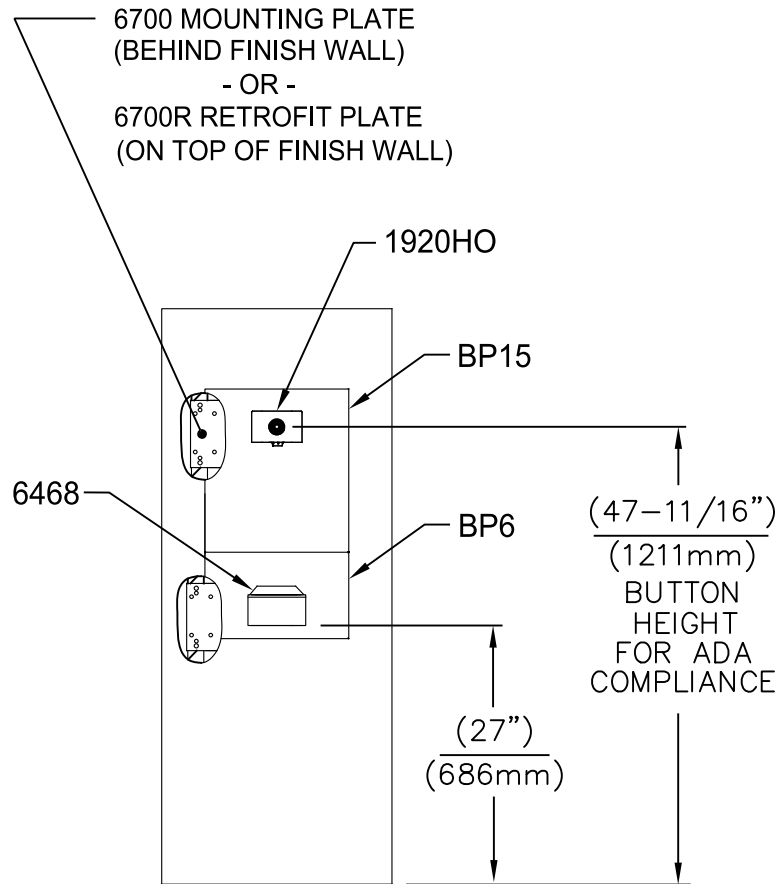
\*\* EXISTING PUSH BUTTON ASSEMBLY SHOWN, CAN BE CONVERTED TO HANDS OFF STYLE, USING RETRO-FIT KIT MODEL 1RKHO.H.

\* IF YOUR FOUNTAIN IS THIS STYLE USE THESE DIMENSIONS

1. SEE SEPARATE INSTALLATION DRAWINGS FOR MOUNTING PLATES AND BACK PANELS (SHOWN FOR REFERENCE - NOT SUPPLIED).
2. WHEN INSTALLING THIS UNIT, LOCAL, STATE OR FEDERAL CODES SHOULD BE ADHERED TO FOR INSTALLATION LOCATIONS, WASTE & SUPPLY REQUIREMENTS OTHER THAN SHOWN.



				1455 KLEPPE LANE SPARKS, NEVADA 89431 (775) 359-4712 FAX (775) 359-7424 E-MAIL: HAWS@HAWSO.COM WEBSITE: WWW.HAWSO.COM			
ECN NO. 5574	REVISED PER ECN: 6136	BY: FV	MODEL(S) 1920HO/1920HPSHO/1920WHO	PART NUMBER 0510001063.D			
DRAWN: FV	DATE: 08/18/20	CHK'D: KM		REVISION 8			
APPROVED: FV	DATE: 11/04/24	SCALE: N/A	DRAWING TYPE: INSTALLATION	SIZE: A	SHEET 6	OF 8	

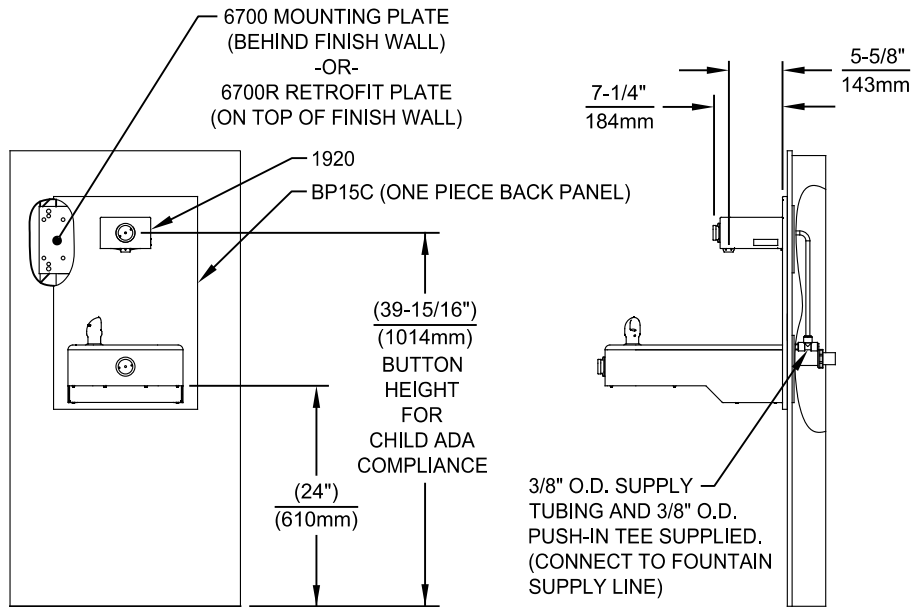


### INSTALLATION ABOVE 6468

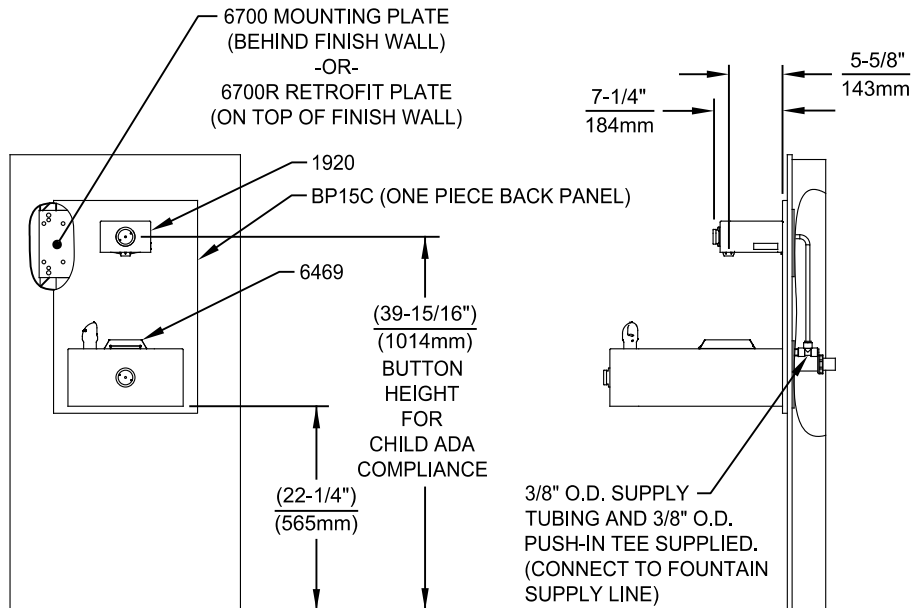
1. SEE SEPARATE INSTALLATION DRAWINGS FOR MOUNTING PLATES AND BACK PANELS (SHOWN FOR REFERENCE - NOT SUPPLIED).
2. WHEN INSTALLING THIS UNIT, LOCAL, STATE OR FEDERAL CODES SHOULD BE ADHERED TO FOR INSTALLATION LOCATIONS, WASTE & SUPPLY REQUIREMENTS OTHER THAN SHOWN.

			1455 KLEPPE LANE SPARKS, NEVADA 89431 (775) 359-4712 FAX (775) 359-7424 E-MAIL: HAWS@HAWSO.COM WEBSITE: WWW.HAWSO.COM		
ECN NO. 5744	REVISED PER ECN: 6136	BY: FV	MODEL(S) 1920HO/1920HPSHO/1920WHO		PART NUMBER 0510001063.D
DRAWN: FV	DATE: 10/04/21	CHK'D: KM			REVISION 8
APPROVED: FV	DATE: 11/04/24	SCALE: N/A	DRAWING TYPE: INSTALLATION	SIZE: A	SHEET 7 OF 8

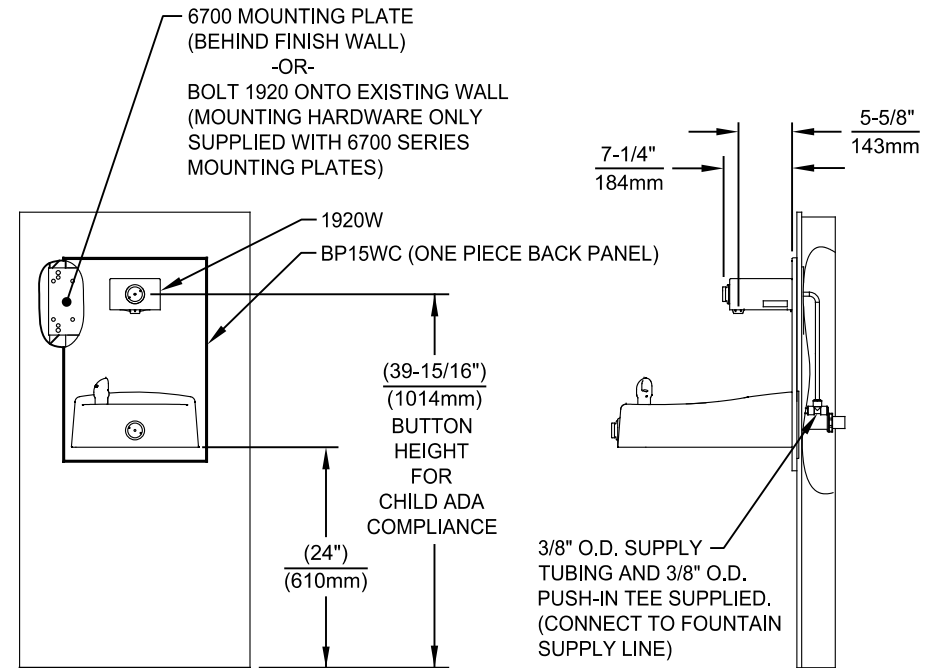




**INSTALLATION ABOVE HAWS 1107L & H1107.8 SERIES**



**INSTALLATION ABOVE HAWS 1109, 1109.14 & H1109.8 SERIES**  
**MUST USE PARALLEL APPROACH WITH THIS BOWL COMBINATION**



**INSTALLATION ABOVE HAWS 1311**

**NOTES:**

- HEIGHT DIMENSIONS SHOWN ARE FOR CHILD ADA APPLICATIONS:  
- BOTTLE FILLER HEIGHT AT 40" MAX.  
- DRINKING FOUNTAIN BUBBLER HEIGHT AT 30" MAX.  
(SEE SHEETS 3, 4 & 5 FOR ADULT ADA HEIGHT DIMENSIONS)
- SEE SEPARATE INSTALLATION DRAWINGS FOR MOUNTING PLATES AND BACK PANELS (SHOWN FOR REFERENCE - NOT SUPPLIED).
- WHEN INSTALLING THIS UNIT, LOCAL, STATE OR FEDERAL CODES SHOULD BE ADHERED TO FOR INSTALLATION LOCATIONS, WASTE & SUPPLY REQUIREMENTS OTHER THAN SHOWN.



1455 KLEPPE LANE  
SPARKS, NEVADA 89431  
(775) 359-4712 FAX (775) 359-7424  
E-MAIL: HAWS@HAWS.CO.COM  
WEBSITE: WWW.HAWS.CO.COM

ECN NO. 5744	REVISED PER ECN: 6136	BY: FV	MODEL(S) 1920HO/1920HPSHO/1920WHO	PART NUMBER 0510001063.D
DRAWN: FV	DATE: 02/26/24	CHK'D: KM		REVISION 8
APPROVED: FV	DATE: 11/04/24	SCALE: N/A	DRAWING TYPE: INSTALLATION	SIZE: A SHEET 8 OF 8