



INSTALLATION, OPERATION & MAINTENANCE INSTRUCTIONS

1455 Kleppe Lane ♦ Sparks, NV 89431-6467 ♦ (775) 359-4712 ♦ Fax (775) 359-7424
E-mail: haws@hawsco.com ♦ website: www.hawsco.com

No. 0510001066 (2)

Model 1011HO/1011HO2/1011HPSHO/1011HPSHO2 Drinking Fountain

NOTE TO INSTALLER: Please leave this information with the Maintenance Department.

CAUTION! Prior to making any electrical connections, verify with a voltmeter that power from the service panel is **off**.

LIMITED WARRANTY

HAWS warrants that this specific product is guaranteed against defective material or poor workmanship for a period of **one year from date of shipment**. HAWS liability under this warranty shall be discharged by furnishing without charge F.O.B. HAWS Factory any goods, or part thereof, which shall appear to the Company upon inspection to be of defective material or not of first class workmanship, provided that claim is made in writing to Haws within a reasonable period after receipt of the product. Where claims for defects are made, the defective part or parts shall be delivered to the Company, prepaid, for inspection. HAWS will not be liable for the cost of repairs, alterations or replacements, or for any expense connected therewith made by the owner or his agents, except upon written authority from HAWS, Sparks, Nevada. HAWS will not be liable for any damages caused by defective materials or poor workmanship, except for replacements, as provided above. Buyer agrees that HAWS shall not be liable for general, special, or consequential damages claimed to arise under the contract of sale. The drinking fountain manufactured by HAWS is warranted to function if installation and maintenance instructions provided are adhered to. The units also must be used for the purpose for which they were intended.

**NO OTHER WARRANTIES EXPRESSED OR IMPLIED ARE AUTHORIZED,
PROVIDED OR GIVEN BY HAWS.**

**SHOULD YOU EXPERIENCE DIFFICULTY WITH THE INSTALLATION OF THIS
MODEL PLEASE CALL:**

TECHNICAL SUPPORT: 1-800-766-5612
FOR CUSTOMER SERVICE: 1-888-640-4297

RECOMMENDED TOOLS: Hack saw, pipe joint sealant, screwdriver, level, 12" adjustable wrench, 10" pipe wrench, 3/32" and 5/32 " hex key wrench, 9/16", 1/2", 7/16" socket wrench or open-end wrench.

LOCATION OF UNIT: The Model 1011HO/1011HO2/1011HPSHO/1011HPSHO2 Drinking Fountain is a wheelchair accessible drinking facility. The height dimensions shown, meet current ADA requirements. When installing this unit, local, state or federal codes should be adhered to. If height other than shown is required, then dimensions must be adjusted accordingly.

SUPPLY LINE: The minimum recommended line size is 1/2"IPS with 30-90 psi (2-6 ATM) flowing pressure. Where sediment or mineral content is a problem, an inlet filter is recommended.

PLUMBING CONNECTIONS: Inlet is 3/8" O.D. push-in type fitting. Waste outlet is 1-1/4" O.D. tube.

ELECTRICAL CONNECTIONS: Drinking Fountain may be mounted on external wall of building provided transformer shall be mounted inside the wall and protected from water as shown on RKHO Series O&M details (page 8) per NEC/CEC and local code.

Sensor:

1011HO/1011HPSHO with 1RKHO.H: 100-277VAC x 9VDC, 50-60Hz, 5 Watts.

1011HO2/1011HPSHO2 with 2RKHO.H: 100-277VAC x 9VDC, 50-60Hz, 5 Watts.

MAINTENANCE: Periodically clean out the supply line Y-strainer (and strainer located inside push button valve on Models 1011HO/1011HPSHO). Refer to 5874 Series Valve Manual for more information.

INSTALLATION PROCEDURE

GENERAL NOTES:

1. For all plastic push-in type fitting connections, only connect NSF-61 copper or plastic tubing. Stainless steel or glass tubing is not recommended. The following assembly instructions must be followed to ensure a watertight connection:
 - a. Cut tubing square and clean.
 - b. Mark from end of tube the length of insertion (See table below).
 - c. Push tube into the fitting until it bottoms out.
 - d. To remove, depress collet and pull tubing out.

Tube Sizes	O.D. Tolerance	Insertion Depth
3/8"	±.005"	3/4"

CLEANING INSTRUCTIONS FOR HI-POLISHED STAINLESS PRODUCTS:

Haws' recommended cleaning procedure for hi-polished stainless products is as follows: Use a mild detergent or soap and water for removing stains and fingerprints or use a clean cloth with window cleaner.

INSTALLATION PROCEDURE...

STEP 1: Thoroughly flush supply line to remove all foreign matter. Connect 1/2" IPS supply screwdriver-stop (not supplied). Install supply 3/8" O.D. tubing (supplied), between screwdriver-stop and supplied Y-strainer (Cut tubing to proper length and follow

general notes for proper connection procedures for push-in type fittings). Connect 3/8" O.D. tube between supplied tee and fountains and solenoid valve outlet(s) (if not already connected). See installation drawing at the end of this manual for supply plumbing and wiring details.

STEP 2: Open screwdriver-stop **wide open** while checking for leaks at all connections. Also, check waste for leaks.

STEP 3: Model 1011HO/1011HPSHO (only): 5874 Series Valve – Adjust bubbler stream height using a small flat-head screwdriver inserted through a hole in the center of the push button for increased flow turn clockwise and for decreased flow turn counterclockwise. If flow problems arise, see troubleshooting guide for additional instructions to correct problem. Bubbler stream may lower during short break-in period. Set initial stream height a little high to minimize or eliminate the need for break-in period readjustment.

Model 1011HO/1011HPSHO/1011HO2/1011HPSHO2: 5867 Valve Pressure Regulator – Adjust bubbler stream height using the black pressure regulator mounted inside bracket that has HO sensor unit, by loosening the locknut and rotating the knob clockwise to increase flow or counterclockwise to reduce flow. Tighten the locknut and check flow height. Repeat these steps until the bubbler flow height is correct.

STEP 4: 1RKHO.H & 2RKHO.H Transformer and Sensor Setup: Refer to the 1RKHO.H & 2RKHO.H manuals for instructions (supplied).

MAINTENANCE

STEP 1: Periodically clean out the supply line Y-strainer and the strainer located in the push button valve body on Models 1011HO/1011HPSHO (Refer to 5874 Series Valve Manual for more information).

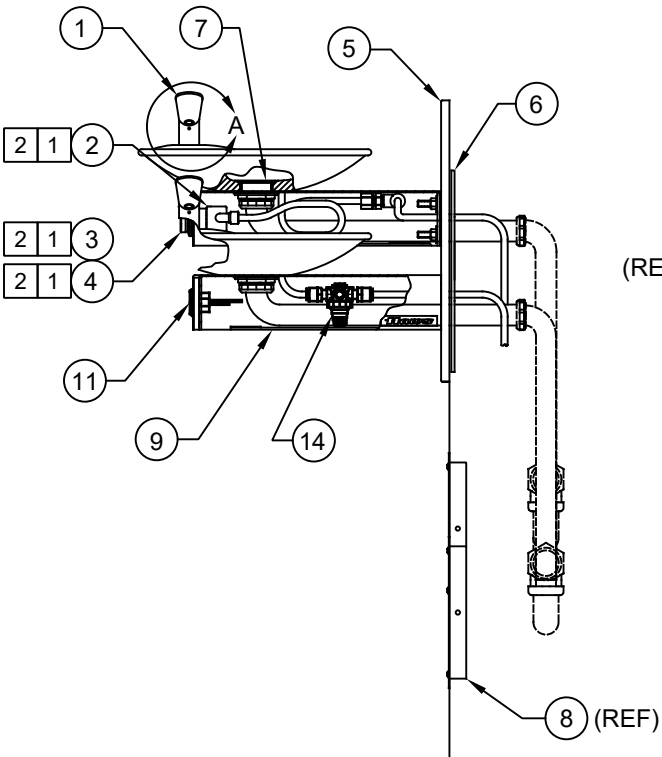
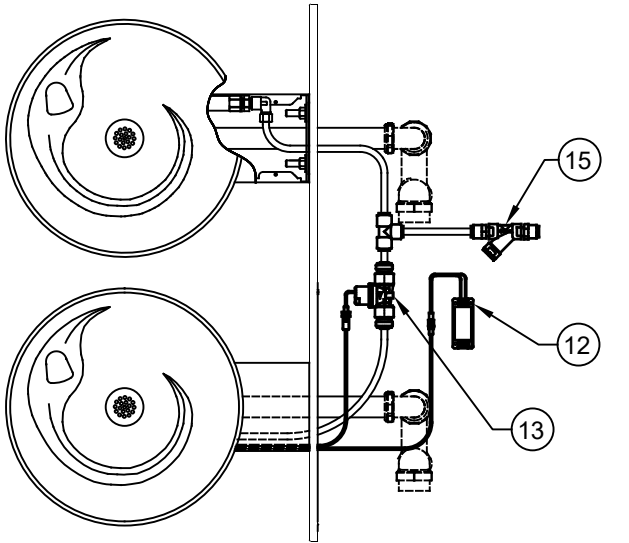
5874 Series VALVE TROUBLESHOOTING (Models 1011HO/1011HPSHO Only)	
PROBLEM	REPAIR CHECKLIST
1. Insufficient bubbler flow.	1a. Check that inlet screwdriver stop valve (not supplied) is in wide-open position. b. Verify minimum 30 psi flowing supply pressure. c. Clean strainer. See 5874 Series Valve Manual. d. Adjust valve to increase flow. Use front adjust screw or see 5874 Series Valve Manual.
	e. Clean screens (inside nozzle body). Unscrew nozzle insert and very gently activate water supply to pop out qty. 3 screens (be careful not to lose screens). Remove any debris clogging the screen openings and place back into nozzle body. Reassemble nozzle insert.

For more information about Haws products, see our website: www.hawesco.com

NOTES:

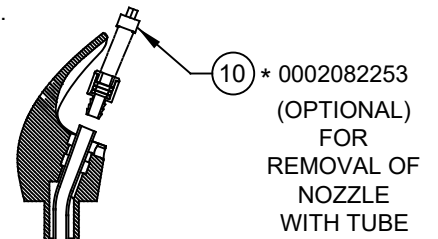
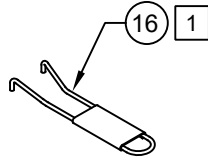
1 5874PBF (ITEM 2) INCLUDES VRK5874 CARTRIDGE ASSEMBLY (ITEM 3), PBA6 FLANGED PUSH BUTTON (ITEM 4) AND SPANNER WRENCH (ITEM 16).

2 ITEMS 2, 3 AND 4 ARE ONLY USED ON MODELS 1011HO AND 1011HPSHO.



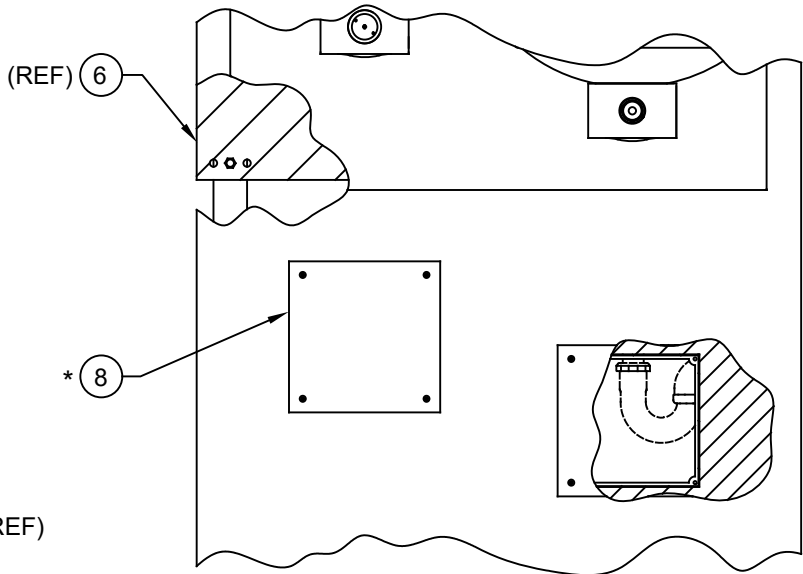
ITEM	DESCRIPTION	1011HO/O2	1011HPSHO/O2
1	BUBBLER HEAD, PCP	5705	5705
2	BUTTON, PUSH, PCP, FLANGED W/ VALVE	5874PBF	5874PBF
2	3 VALVE REPAIR KIT	VRK5874	VRK5874
2	4 BUTTON, PUSH, 5874, FLANGED	PBA6	PBA6
5	PANEL, BACK, F/ SATIN SWIRL OR HI-POL SS	0004012000	0004012023
6	PLATE, MOUNTING	6700.4	6700.4
7	STRAINER, WASTE ASSEMBLY, SCP OR PCP	6463	6463PCP
*	8 PANEL, ACCESS, SS SATIN OR HI-POL	6603	6603HPS
9	PLATE, BOTTOM, F/1000	PBM1000	PBM1000
*	10 DRIVER, NOZZLE, .25 HEX	0002082253	0002082253
11	SENSOR	VRKHO6	VRKHO6
12	TRANSFORMER	VRKHO8	VRKHO8
13	SOLENOID VALVE	VRKHO5	VRKHO5
14	PRESSURE REGULATOR	5867	5867
15	Y-STRAINER	6433	6433
16	SPANNER WRENCH	0006983506	0006983506

* DENOTES OPTIONAL PART.



* 0002082253 (OPTIONAL) FOR REMOVAL OF NOZZLE WITH TUBE

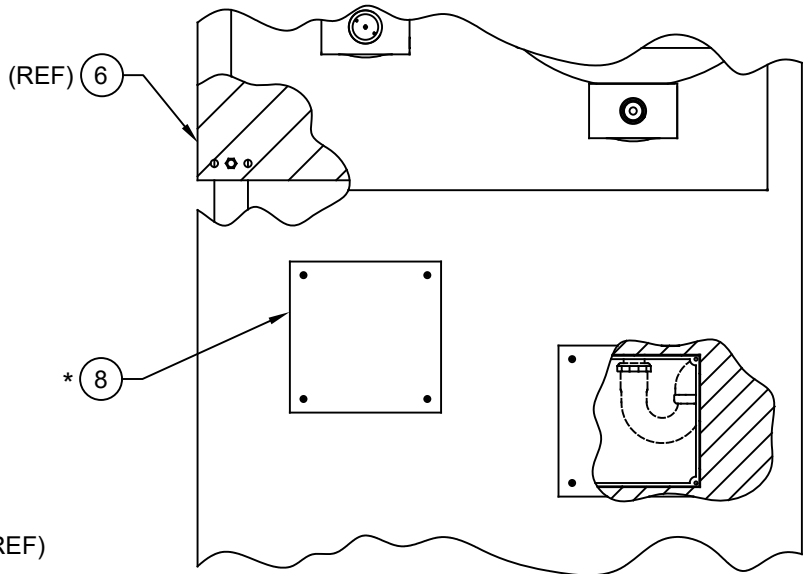
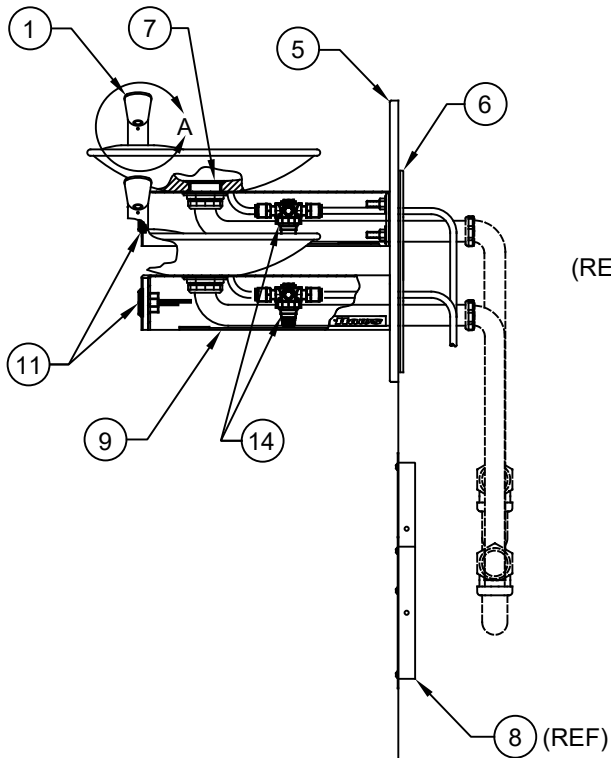
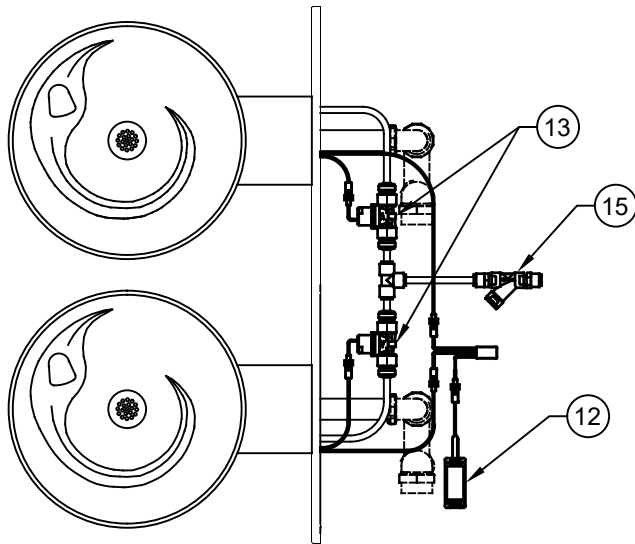
BUBBLER HEAD 5705 (TUBING CONNECTS TO INSERT ASSY)
DETAIL A
ROTATED 90° INTO VIEW



1011HO/HPSHO SHOWN
1011HO2/HPSHO2 ON SHEET 2
PARTS BREAKDOWN


WHEN ORDERING PARTS PLEASE SPECIFY MODEL NUMBER.

		1455 KLEPPE LANE SPARKS, NEVADA 89431 (775) 359-4712 FAX (775) 359-7424 E-MAIL: HAWS@HAWSCO.COM WEBSITE: WWW.HAWSCO.COM	
ECN NO. 5579	REVISED PER ECN: 5678	BY DP	MODEL(S) 1011HO/1011HO2/1011HPSHO/1011HPSHO2
DRAWN FV	DATE 09/15/20	CHKD FV	PART NUMBER 0510001066
APPROVED BJM	DATE 04/23/21	SCALE: 1:1	REVISION 2
DRAWING TYPE: PARTS BREAKDOWN		SIZE: A SHEET 1 OF 2	



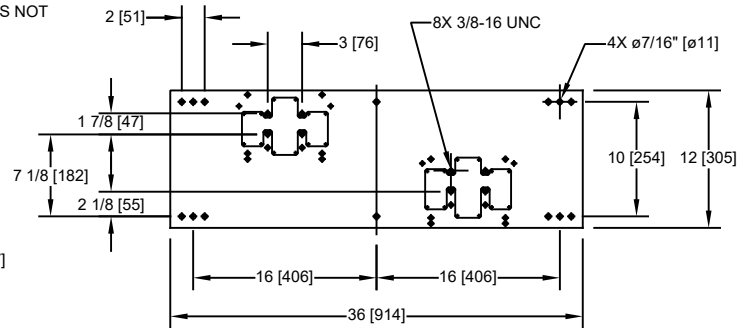
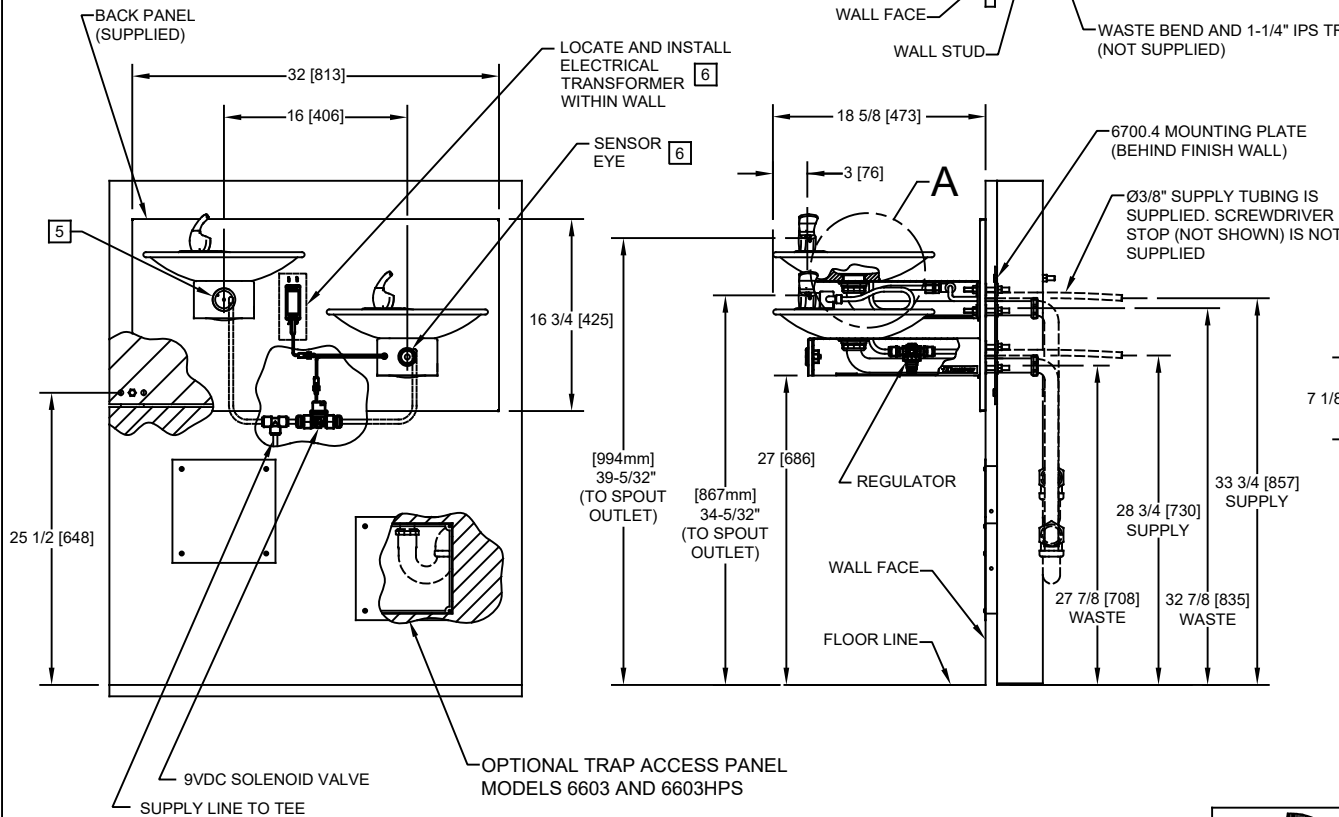
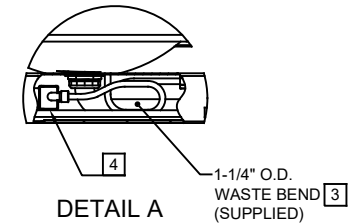
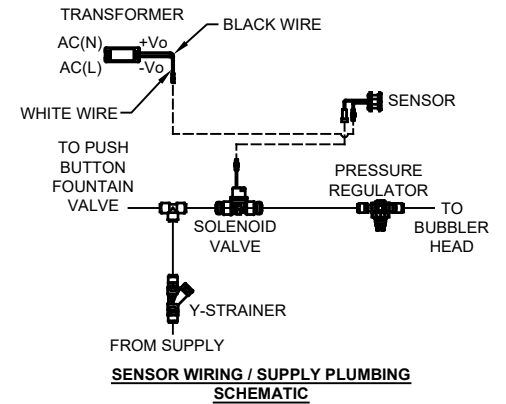
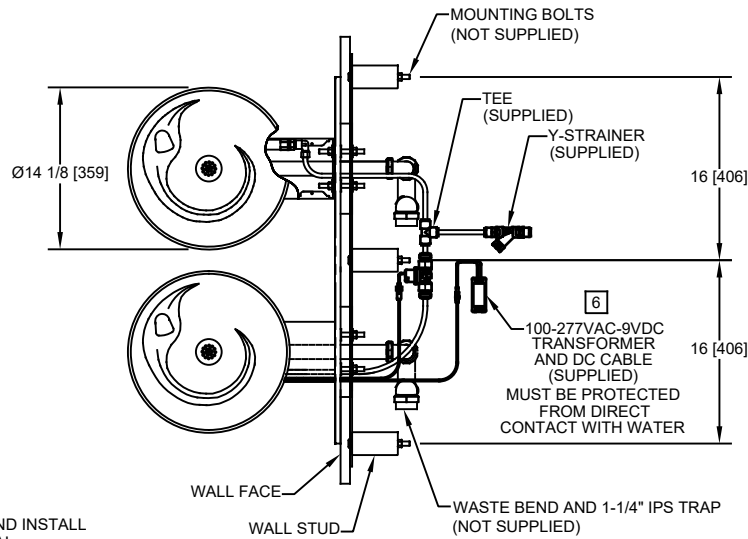
1011HO2/HPSHO2 SHOWN
 1011HO/HPSHO ON SHEET 1
PARTS BREAKDOWN

WHEN ORDERING PARTS PLEASE SPECIFY MODEL NUMBER.

 Haws [®]		1455 KLEPPE LANE SPARKS, NEVADA 89431 (775) 359-4712 FAX (775) 359-7424 E-MAIL: HAWS@HAWSCO.COM WEBSITE: WWW.HAWSCO.COM	
ECN NO. 5579	REVISED PER ECN: 5678	BY DP	MODEL(S) 1011HO/1011HO2/1011HPSHO/1011HPSHO2
DRAWN FV	DATE 09/15/20	CHKD FV	PART NUMBER 0510001066
APPROVED BJM	DATE 04/23/21	SCALE: 1:1	REVISION 2
DRAWING TYPE: PARTS BREAKDOWN		SIZE: A	SHEET 2 OF 2

NOTES:

1. HOLD ROUGH-IN DIMENSIONS $\pm 1/8"$ (3.2mm).
2. WHEN INSTALLING THIS UNIT, LOCAL, STATE, OR FEDERAL CODES SHOULD BE ADHERED TO FOR INSTALLATION DIMENSIONS (LOCATIONS), WASTE AND SUPPLY REQUIREMENTS OTHER THAN SHOWN.
3. INSTALLER MUST PROVIDE TRAP FOR PROPER INSTALLATION.
4. REMOVE VALVE FROM PUSH BUTTON TO INSTALL WASTE ELBOW ONTO BOWL. AFTER WASTE ELBOW IS INSTALLED, REINSTALL VALVE AND ADJUST FLOW.
5. REFER TO 5874 SERIES OPERATION AND MAINTENANCE MANUAL FOR PUSH BUTTON AND VALVE INSTALLATION/MAINTENANCE INSTRUCTIONS.
6. REFER TO 1RKHO.H & 2RKHO.H OPERATION AND MAINTENANCE INSTRUCTIONS FOR TRANSFORMER AND SENSOR SETUP.

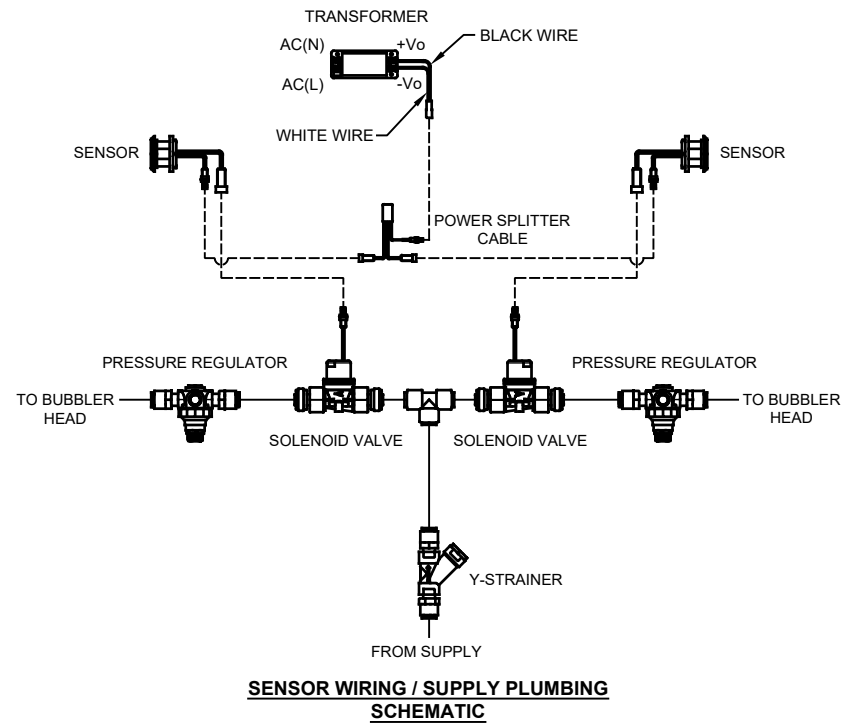
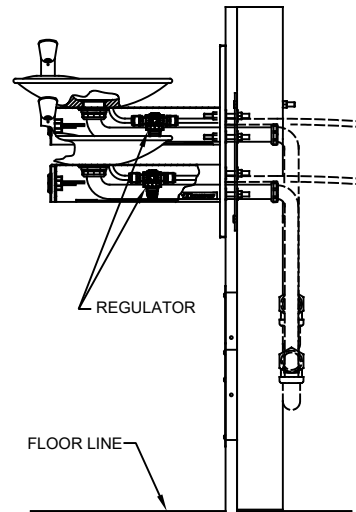
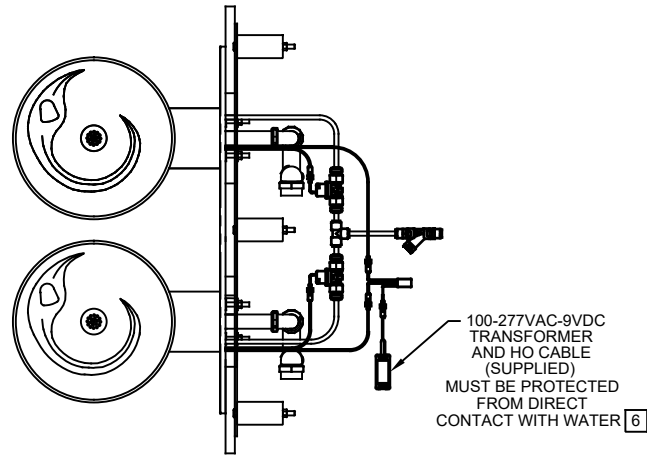
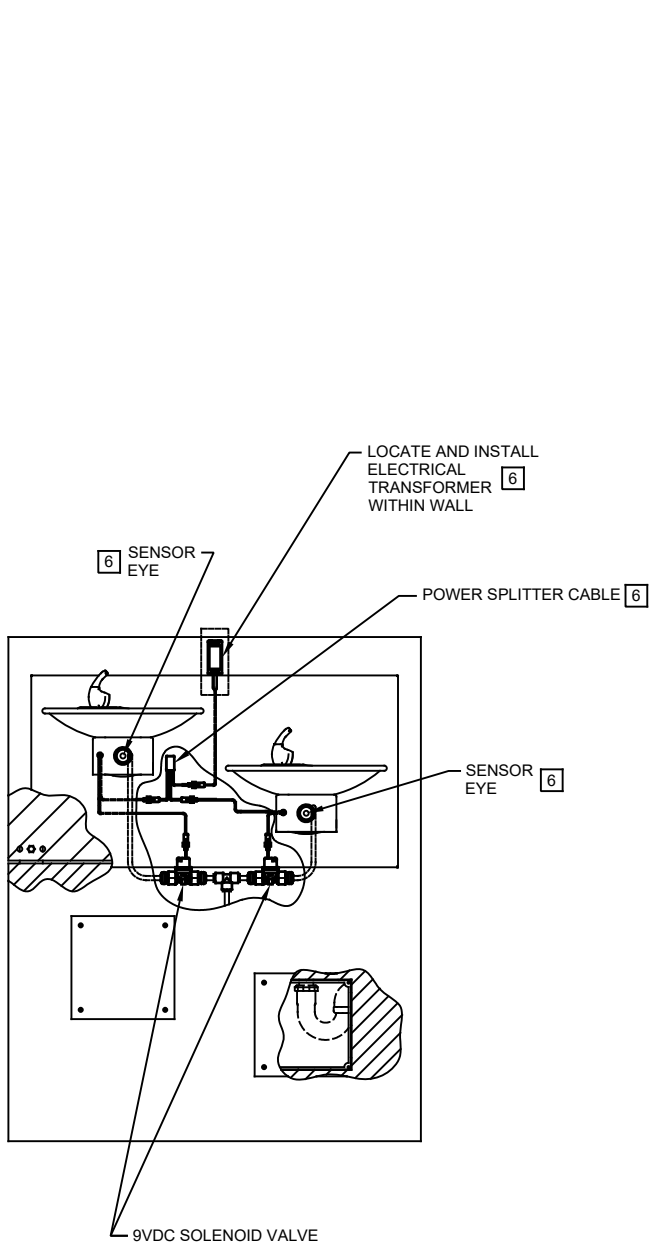


**6700.4 MOUNTING PLATE
MUST BE INSTALLED BEFORE FINISH WORK.
THIS PLATE IS REQUIRED - SOLD SEPARATELY.**


MODEL 1011HO/1011HPSHO SHOWN
MODEL 1011HO2/1011HPSHO2 ON SHEET 2
(ROUGH-IN DIMENSIONS APPLY TO ALL 4 MODELS)

1455 KLEPPE LANE
SPARKS, NEVADA 89431
(775) 359-4712 FAX (775) 359-7424
E-MAIL: HAWS@HAWSCO.COM
WEBSITE: WWW.HAWSCO.COM

ECN NO. 5579		REVISED PER ECN: 5678		BY: DP		MODEL(S)		PART NUMBER	
DRAWN: FV		DATE: 09/15/20		CHKD: FV		1011HO/1011HO2/1011HPSHO/1011HPSHO2		0510001066.D	
APPROVED: BJM		DATE: 04/23/21		SCALE: 1:1		DRAWING TYPE: INSTALLATION		REVISION: 2	
				SIZE: A		SHEET 1 OF 2			



MODEL 1011HO2/1011HPSHO2 SHOWN
 MODEL 1011HO/1011HPSHO ON SHEET 1
 (SEE SHEET 1 FOR APPLICABLE ROUGH-IN DIMENSIONS)

		1455 KLEPPE LANE SPARKS, NEVADA 89431 (775) 359-4712 FAX (775) 359-7424 E-MAIL: HAWS@HAWSCO.COM WEBSITE: WWW.HAWSCO.COM	
		ECN NO. 5579 DRAWN: FV APPROVED: BJM	REVISED PER: ECN: 5678 DATE: 09/15/20 DATE: 04/23/21
PART NUMBER 0510001066.D			REVISION 2
SCALE: 1:1		DRAWING TYPE: INSTALLATION	SIZE: A SHEET 2 OF 2