

## FEATURES & BENEFITS

### CONSTRUCTION

Rugged ADA accessible 18-gauge Type 304 Stainless Steel with satin finish bowls, 14 gauge Type 304 Stainless Steel bottle filler that resists stains and corrosion, soft rounded corners, stainless steel satin-finish back panels, vandal resistant bottom plate, and 1-1/4" integral trap.

### BOTTLE FILLER

Vandal-resistant, 14-gauge Type 304 stainless steel bottle filler housing with touchless operation and 1 gpm (3.78L) laminar flow.

### VANDAL RESISTANT

The bubbler heads, sensors, drain strainers and bottom plates are locked in place, discouraging unwanted vandal tampering, and 30-second obstruction time-out to reduce tampering of sensors.

### BUBBLER HEADS

Polished chrome-plated brass bubbler heads with integral 11/16" dia. basin shank and stainless anti-rotation roll pin for vandal resistance strength. Shielded, angled stream opening provides a steady, sanitary source of drinking water at .45 gpm.

### FOUNTAIN VALVES

Fountain and bottle filler incorporates touchless sensor operated stainless steel solenoid valves controlled by a transformer for hands free operation. A pressure regulator is used to adjust the bubbler flow according to incoming water pressures.

### MOUNTING

Heavy-duty 16 gauge galvanized steel mounting frame with welded-in heavy-duty 10 gauge mounting plate with pre-punched mounting holes provides the sturdy hidden support needed for the Hi-Lo configuration of this unit. Further convenience is given to the chiller with the integral fold-out shelf.

## OPTIONS

- Mounting Plate: Model 6700, in-wall mounting plate for model 1920.
- Mounting Plate: Model 6700R, on-wall mounting plate for model 1920.
- Water Filter: Model 6426, 10" x 2" (25.4 x 5.1 cm), in-line lead removal element that reduces lead from incoming water supply.
- Custom Logo Panel: Model 6475, Hydration By Haws® logo panel with customization options.

For more information, visit [www.hawsc.com](http://www.hawsc.com) or call (888) 640-4297.



## REQUIRED MODELS

**H1119.8H02 / MTGFR.LG / HCR8 / 6469 / 1920HO / BP32**

Order these items to make up the Model H1119.8H02-1920HO fountain with stainless steel back panel and grille, bottle filler with stainless steel back plate, and remote chiller shown above.

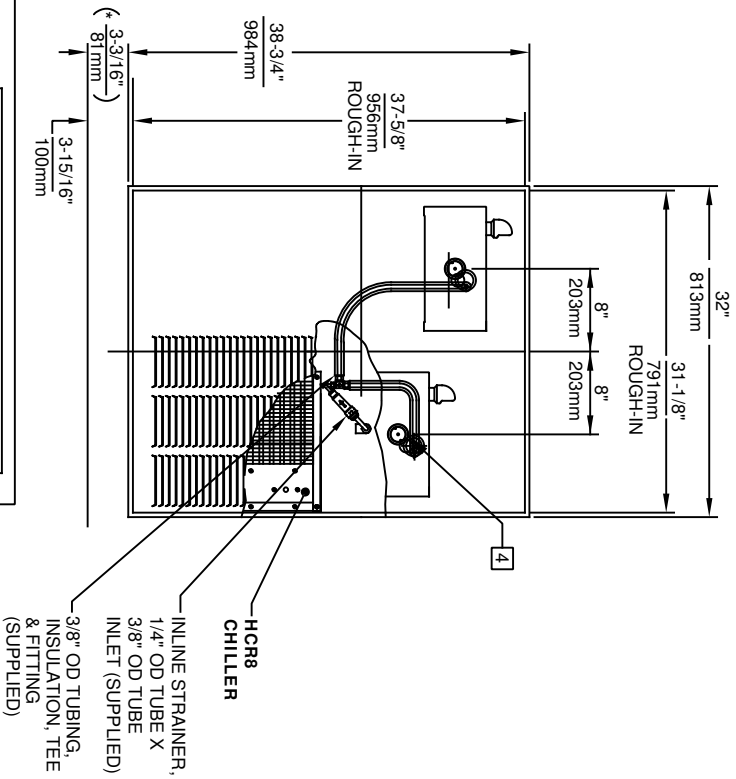
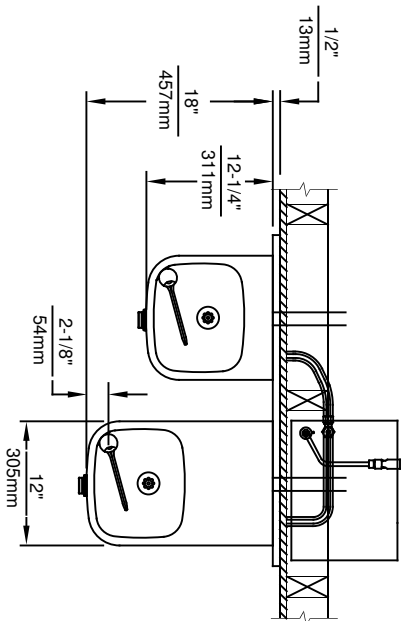
**FOR INDOOR USE ONLY**

## SPECIFICATIONS

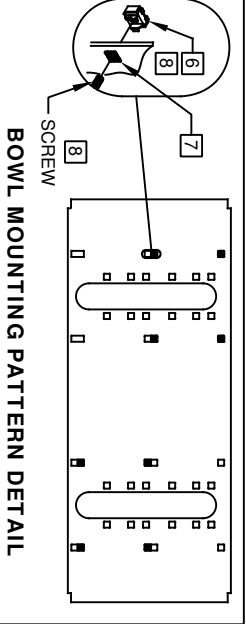
Model H1119.8H02-1920HO vandal-resistant wall-mounted ADA combination motion-activated water cooler and bottle filler shall include dual 18-gauge Type 304 Stainless Steel satin-finish basins, 14 gauge bottle filler bracket, touchless sensor operated stainless steel solenoid valves with 30-second obstruction time-out controlled by a transformer provide 100% leadfree waterways, polished chrome-plated brass vandal-resistant bubbler heads, 1 gpm (3.78L) laminar flow bottle filler, polished chrome-plated vandal-resistant waste strainers, vandal-resistant bottom plates, stainless steel satin-finish back panel and louvered intrusion-proof grill, high and low fountain mounting levels, and 1-1/4" NPT traps. The R-134a refrigeration system is hermetically sealed and delivers a minimum of 8 gph (30.3 L) of water at 50° F (10° C) cooled from 80° F (26.7° C) inlet water at 90 F (32.2 C) ambient. 115 Volts, 60Hz, rated watts: 370, full load amps: 5. Haws electric water coolers comply with ARI Standard 1010 and ANSI A117.1, and are listed by Underwriter Laboratories to U.S. and Canadian standards. Manufactured to be lead-free by all known definitions including NSF/ANSI/CAN 61-Section 9, NSF/ANSI/ CAN 372, California Proposition 65, and the Federal Safe Drinking Water Act. Product is compliant to California Health and Safety Code 116875 (AB 1953-2006), and 116876 (AB 100) "NSF/ANSI/CAN 61: Q ≤ 1".

**The bottle filler requires a mounting plate; either the Haws model 6700 in-wall or the 6700R on-wall support plate.**





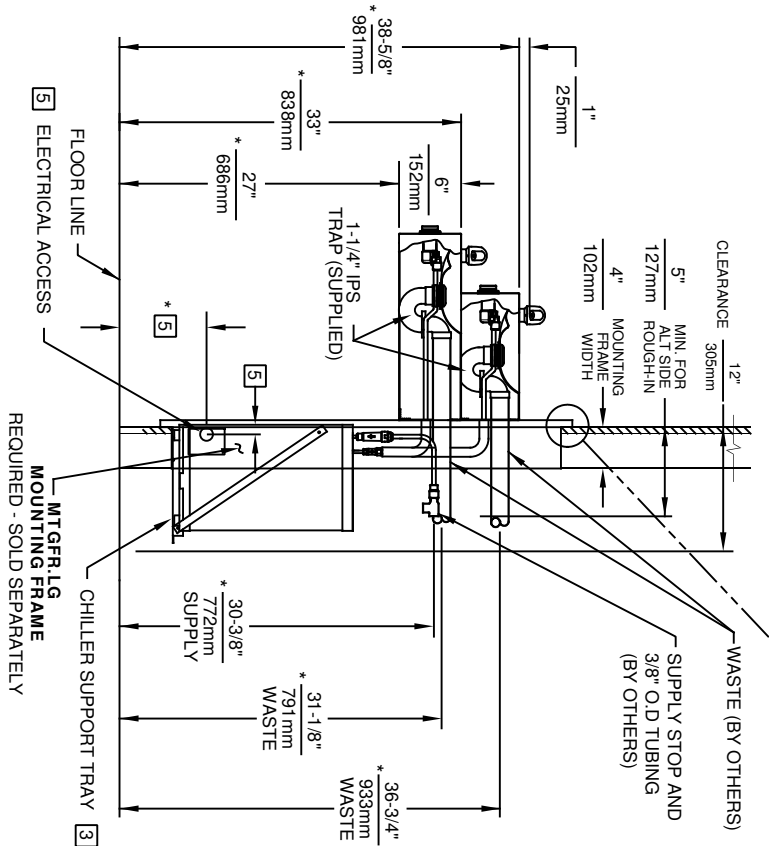
4  
HCR8 CHILLER  
INLINE STRAINER, 1/4" OD TUBE X 3/8" OD TUBE INLET (SUPPLIED)  
3/8" OD TUBING, INSULATION, TEE & FITTING (SUPPLIED)



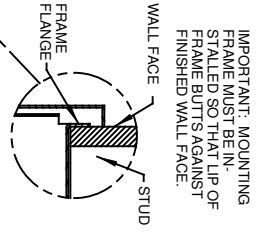
**BOWL MOUNTING PATTERN DETAIL**

**NOTES:**

1. HOLD ROUGH-IN DIMENSIONS ± 1/8" (3.2mm)
2. WHEN INSTALLING THIS UNIT, LOCAL, STATE OR FEDERAL CODES SHOULD BE ADHERED TO. FOR INSTALLATION HEIGHTS OTHER THAN SHOWN, DIMENSIONS MARKED (\*) MUST BE ADJUSTED ACCORDINGLY.
3. ALIGN HOLES IN CHILLER SUPPORT TRAY WITH HOLES IN FRAME AND FASTEN WITH #10 SHEET METAL SCREWS.
4. REFER TO 5874 SERIES OPERATION AND MAINTENANCE MANUAL FOR PUSH BUTTON AND VALVE INSTALLATION/MAINTENANCE INSTRUCTIONS.
5. REFER TO MTGFR LG INSTALLATION DRAWING FOR ROUGH-IN DIMENSIONS.
6. INSERT 5/16"-18 PANEL, INSERTS FROM OPPOSITE SIDE AT LOCATIONS SHOWN BY DARKENED HOLES. HOLE COMBINATIONS SHOWN ARE FOR USE WITH LOW FOUNTAIN ON THE RIGHT AND THE HI FOUNTAIN ON THE LEFT. USE OPPOSITE HOLES FOR HI ON RIGHT AND LOW ON LEFT.
7. HOLE COMBINATION SHOWN BELOW IS FOR USE WITH LOW FOUNTAIN ON THE RIGHT AND HIGH FOUNTAIN ON THE LEFT. USE OPPOSITE HOLES FOR HIGH ON RIGHT AND LOW ON LEFT.
8. TO CHANGE FOUNTAIN MTG. SCREW LOCATIONS: FIRST REMOVE SCREWS AND THEN SQUEEZE CLIPS ON NUT RETAINER TO POP OUT. SNAP INTO NEW POSITIONS AND RE-ASSEMBLE SCREWS.
9. IMPORTANT: ALL H. LOW (OPTIONAL) CONFIGURATION WILL REQUIRE A DIFFERENT BACK PANEL AND THE WASTE AND SUPPLY DIMENSIONS SHOWN (\*) MUST BE REVERSED.



5 ELECTRICAL ACCESS REQUIRED - SOLD SEPARATELY  
3 CHILLER SUPPORT TRAY REQUIRED - SOLD SEPARATELY



IMPORTANT: MOUNTING FRAME MUST BE INSTALLED SO THAT TIP OF FRAME BUTTS AGAINST FINISHED WALL FACE.

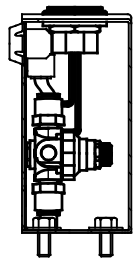
**1456 KLEPPE LANE**  
SPARKS, NEVADA 89431  
(775) 359-4712 FAX (775) 359-7424  
E-MAIL: HAWSON@HAWSCO.COM  
WEBSITE: WWW.HAWSCO.COM

ECN NO. REVISED PER BY:	MODEL(S)	DATE:	SCALE:	DRAWING TYPE:	INSTALLATION:
ECN: 5527	H1119.8	09/01/98	1:19		
DATE:	DATE:	DATE:	DATE:	DATE:	DATE:
04/02/20	04/02/20	04/02/20	04/02/20	04/02/20	04/02/20
APPROVED:	SCALE:	DRAWING TYPE:	INSTALLATION:	SHEET:	OF:
FV	1:19			1	1

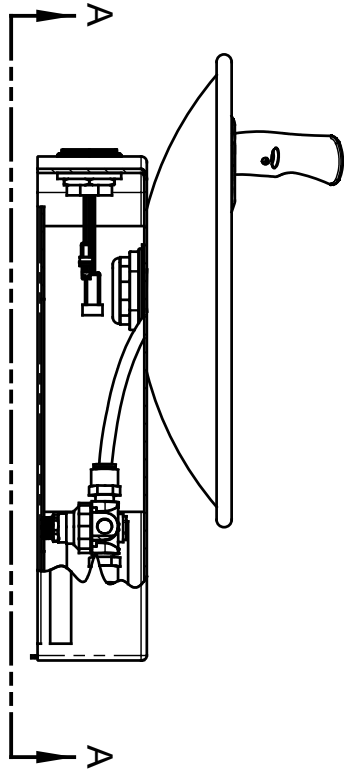
**NOTES:**

1. 2RKHO.P AND 2RKHO.H RETROFIT KITS ALLOW INDOOR FOUNTAINS TO BE CONVERTED FROM A HAWS 5874 PUSH BUTTON VALVE TO HANDS-OFF (TOUCHLESS) OPERATION. FOUNTAINS (NOT SUPPLIED) MAY BE MOUNTED ON THE EXTERNAL WALL OF A BUILDING PROVIDED THE TRANSFORMER SHALL BE MOUNTED INSIDE THE WALL AND PROTECTED FROM WATER AS SHOWN IN THIS INSTALLATION PER NEC/CEC AND LOCAL CODE. AVOID DIRECT CONTACT WITH SUNLIGHT ON THE SENSOR LENS.
2. RETROFIT KIT MODEL:  
2RKHO.P: INDOOR HO RETRO-FIT KIT (INCLUDES 2X HO SENSOR WITH MOUNTING HARDWARE, 2X SOLENOID VALVE, 2X REGULATOR, WIRE SPLITTER, AND 100-240V PLUG-IN TRANSFORMER - SEE SHEET 2).  
2RKHO.H: INDOOR HO RETRO-FIT KIT (INCLUDES 2X HO SENSOR WITH MOUNTING HARDWARE, 2X SOLENOID VALVE, 2X REGULATOR, WIRE SPLITTER, AND 100-277V HARDWIRE TRANSFORMER - SEE SHEET 3).
3. 2RKHO.P REQUIRES 100-240VAC POWER CONNECTION. 2RKHO.H REQUIRES 100-277V POWER CONNECTION.
4. TRANSFORMERS MUST BE MOUNTED SUCH THAT THEY ARE PROTECTED FROM WATER.
5. 2RKHO.P TRANSFORMER IS COMPATIBLE WITH TYPE A AND TYPE B NORTH AMERICAN ELECTRICAL OUTLETS. FOR OTHER RECEPTACLE TYPES, AN ADAPTER (NOT SUPPLIED) MUST BE PROVIDED BY OTHERS.

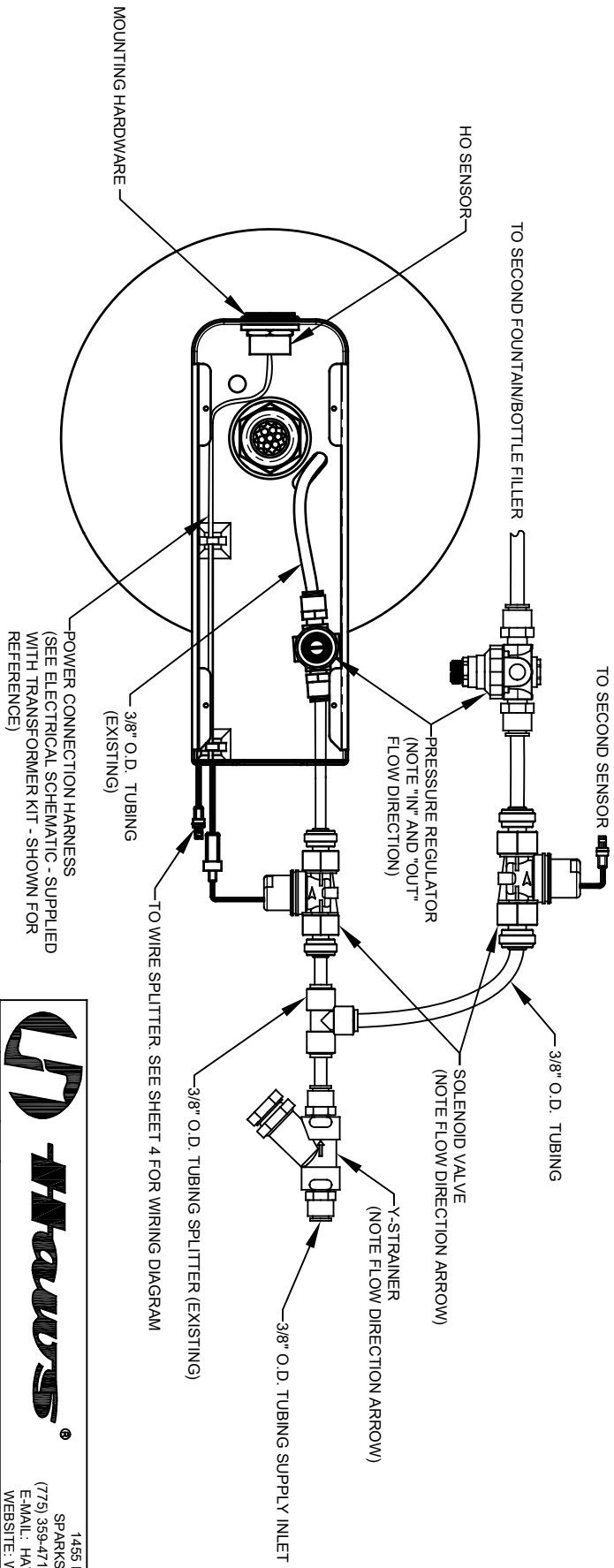
(NOTES CONTINUED ON SHEET 4)



**EXAMPLE 1920 BOTTLE FILLER INSTALLATION**



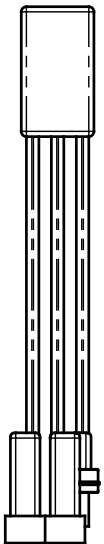
**EXAMPLE 1011 FOUNTAIN INSTALLATION**



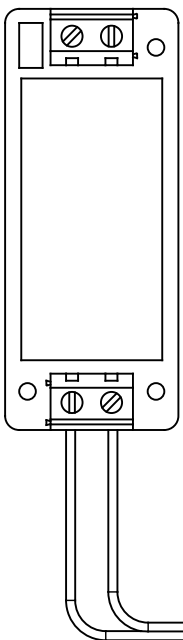
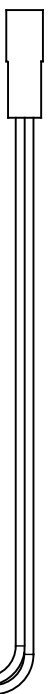
**VIEW A - A**

(BOTTOM PLATE OMITTED FOR CLARITY)

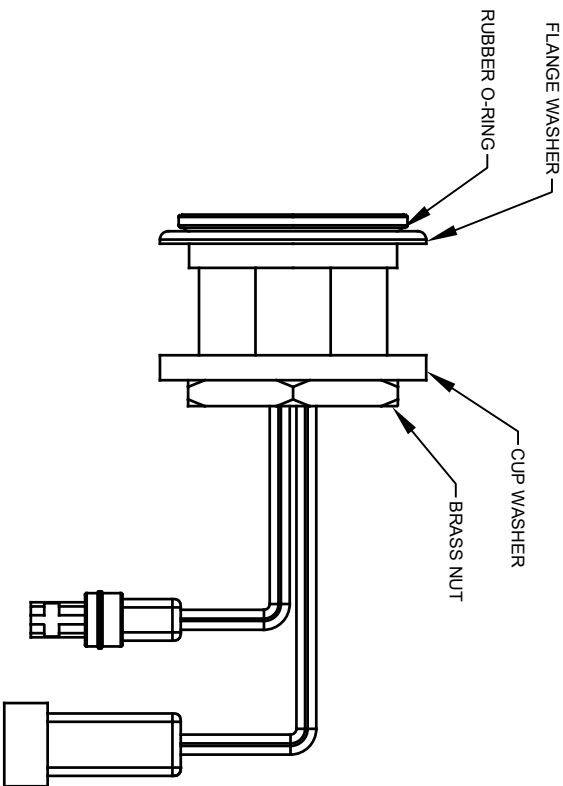
		<b>MODEL(S)</b>		2RKHO.P / 2RKHO.H	
1456 KLEPPE LANE SPARKS, NEVADA, 89431 (775) 359-4712 FAX (775) 359-7424 E-MAIL: HAWS@HAWSCO.COM WEBSITE: WWW.HAWSCO.COM		<b>DUAL HANDS-OFF RETRO-FIT KIT</b>		PART NUMBER 0580001156.D	
ECN NO. REVISED PER BY:	5849	ECN. 5749	BJM	DATE:	02/10/21
APPROVED:	BJM	DATE:	10/28/21	SCALE:	N/A
DRAWN:	BJM	CHK'D:	FV	DRAWING TYPE:	INSTALLATION
SIZE:	A	SHEET:	1	OF:	4



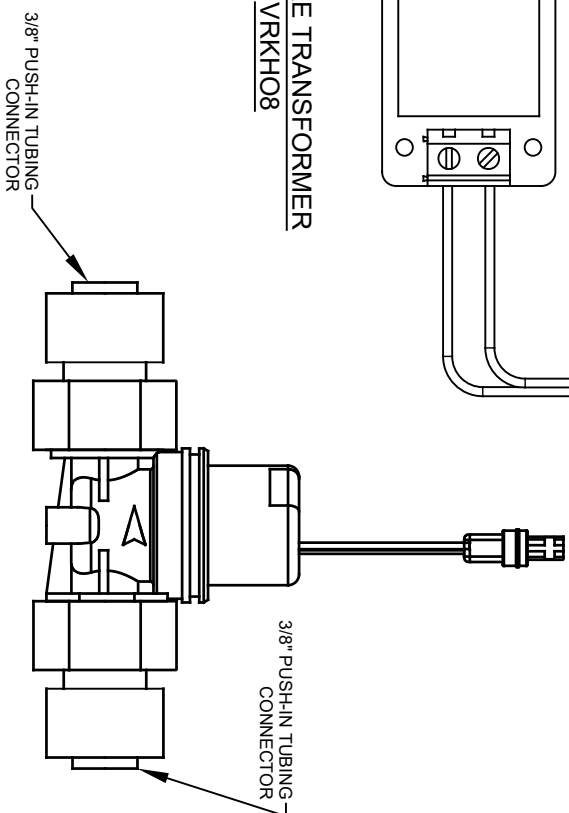
DUAL POWER SPLITTER



HARDWARE TRANSFORMER  
VRKH08

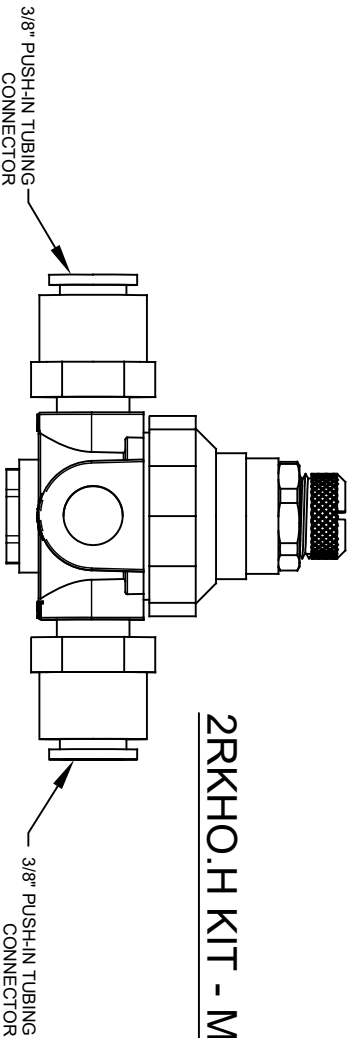


HO SENSOR ASSEMBLY (2X)  
VRKH06

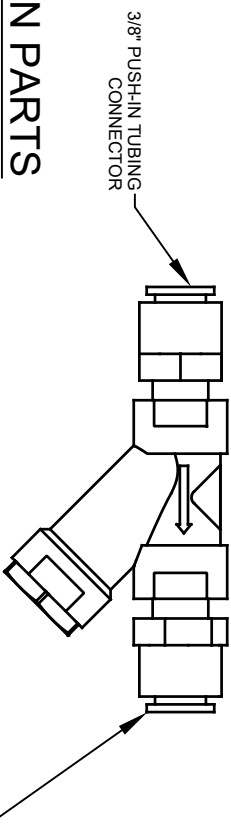


SOLENOID VALVE ASSEMBLY (2X)  
VRKH05

2RKHO.H KIT - MAIN PARTS



VALVE REGULATOR (2X)  
5867



Y-STRAINER  
6433

		<b>Haws</b>	
1456 KLEPPE LANE SPARKS, NEVADA 89431 (775) 359-4712 FAX (775) 359-7424 E-MAIL: HAWS@HAWSCO.COM WEBSITE: WWW.HAWSCO.COM			
ECN NO. REVISED PER BY: 5849 BLM	DATE: 02/10/21	CHK'D: EV	DATE: 10/20/21
APPROVED: BLM	SCALE: N/A	DRAWING TYPE: INSTALLATION	SIZE: A
MODEL(S) 2RKHO.P / 2RKHO.H		PART NUMBER 0580001156.D	
DUAL HANDS-OFF RETRO-FIT KIT		REVISION: 4	
SCALE: N/A		SHEET 3 OF 4	