

FEATURES & BENEFITS

CONSTRUCTION

One-piece drinking fountains with low-profile design made of 14 gauge Type 304 stainless steel with 1/4" (.6 cm) thick stainless back plates welded in, and vandal-resistant stainless bottom plates. Satin finish resists stains and corrosion.

ADA CONFIGURABLE

Supplied with a low profile bowl, individual adjustable panels, and multiple mounting positions, this fountain can be configured for adult and child ADA considerations.

BUBBLER HEADS

Polished chrome-plated brass bubbler heads with integral 11/16" dia. basin shank and stainless anti-rotation roll pin for vandal resistance strength. Shielded, angled stream opening provides a steady, sanitary source of drinking water at .45 gpm.

DRINKING FOUNTAIN VALVES

Fountain incorporates touchless sensor operated stainless steel solenoid valves controlled by a transformer for hands free operation. A pressure regulator is used to adjust the bubbler flow according to incoming water pressures.

VANDAL RESISTANT

The bubbler heads, drain strainers and bottom plates are locked in place, discouraging unwanted vandal tampering.

MOUNTING

Heavy-duty 16-gauge galvanized steel mounting frame with welded-in heavy-duty 10 gauge mounting plate with pre-punched mounting holes. Further convenience is given to the chiller with the integral fold-out shelf.

OPTIONS

- Bottle Filler: Model 1920HO, bottle filler can be a stand-alone station, or mounted above Haws 1117LHO series drinking fountain models.
- Bottle Filler Stand: Model BTL1107, add-on stainless steel stand to place bottle on when 1920HO bottle filler is used.
- Water Filter: Model 6426, 10" x 2" (25.4 x 5.1 cm), in-line lead removal element that reduces lead from incoming water supply.
- Custom Logo Panel: Model 6475, Hydration By Haws" logo panel with customization options.

For more information, visit www.hawscos.com or call (888) 640-4297.



SPECIFICATIONS

Model H1117.8H02 low profile electric vandal-resistant ADA wall mounted motion activated adjustable drinking fountain shall include dual 14-gauge Type 304 Stainless Steel satin finish basins with integral 1/4" (.6 cm) thick stainless-steel back plates, touchless sensor operated stainless steel solenoid valves with 30 second obstruction time-out controlled by a transformer, 100% lead free waterways, polished chrome-plated brass vandal-resistant bubbler heads with integral laminar anti-squirt flow, polished chrome-plated brass vandal-resistant waste strainers, vandal-resistant bottom plates, stainless steel satin finish back panel and louvered intrusion-proof grill, adjustable mounting allowing either basin high or low, and 1-1/4" NPT concealed all cast-brass traps. The patented design allows the unit to be mounted to meet ADA or Child ADA specifications. The R-134a refrigeration system is hermetically sealed and delivers a minimum of 8 gph (30.3 L) of water at 50° F (10° C) cooled from 80° F (26.7° C) inlet water at 90° F (32.2° C) ambient. 115 Volts, 60Hz, rated watts: 370, full load amps: 5

REQUIRES MODEL HCR8 and MTGFR.17 PRICED SEPARATELY

FOR INDOOR USE ONLY

APPLICATIONS

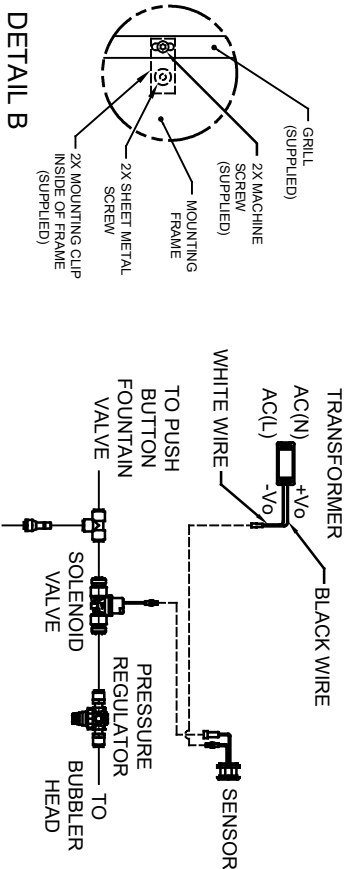
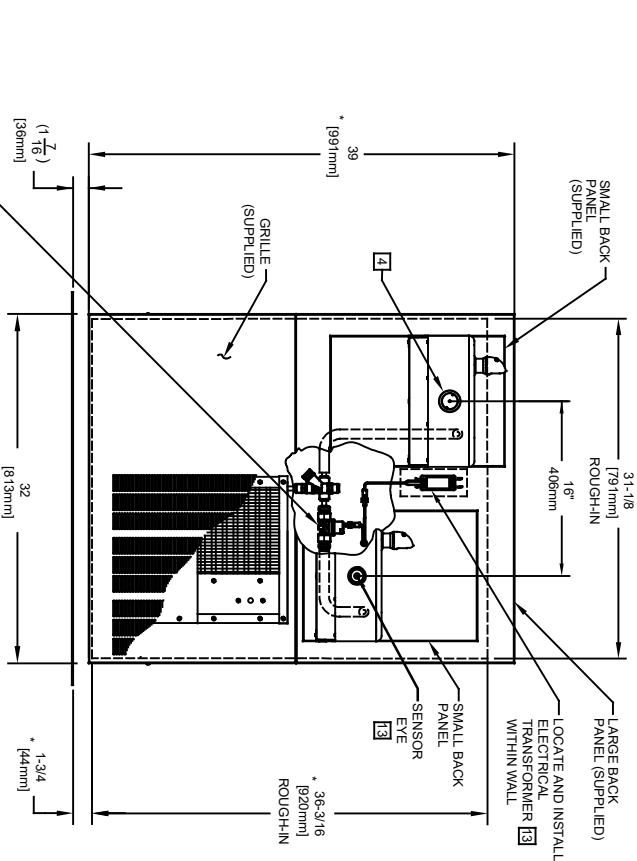
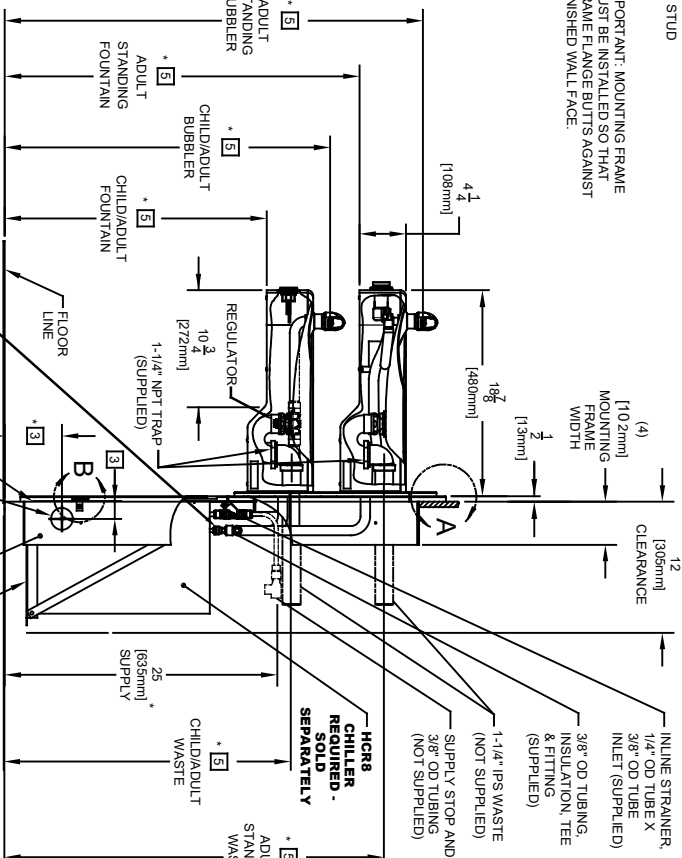
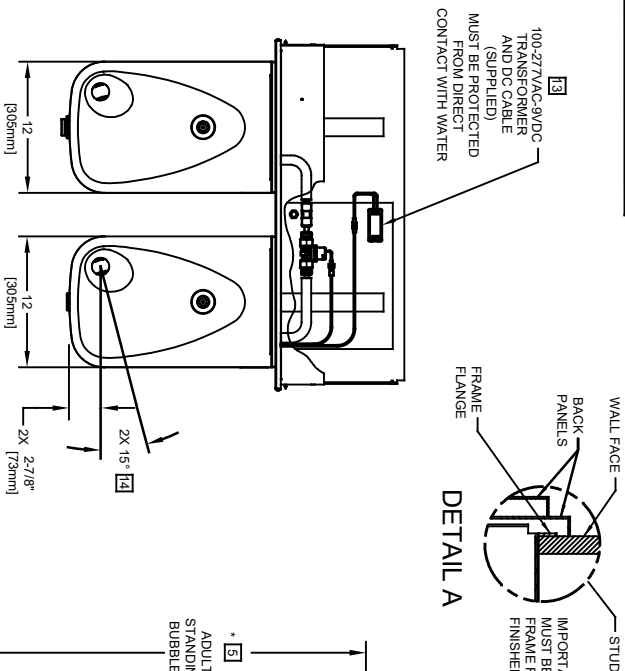
Perfect for either public or private indoor settings, this model is a great fit in areas where aesthetics are important to the overall appeal of the architecture. Beautiful satin finish helps to maintain the fountains overall appeal. Specifically, this type of wall mounted drinking fountain may be placed in settings such as: schools and other locations in and around office buildings. Model meets all current Federal Regulations for the disabled including those in the Americans with Disabilities Act. Haws manufactures drinking fountains, faucets and electric water coolers to be lead-free by all known definitions including NSF/ANSI/CAN 61- Section 9, NSF/ANSI/CAN 372, California Proposition 65, and the Federal Safe Drinking Water Act. Product is compliant to California Health and Safety Code 116875 (AB 1953-2006), and 116876 (AB 100) "NSF/ANSI/CAN 61: Q ≤ 1".



NOTES:

1. HOLD ROUGH-IN DIMENSIONS $\pm 1/8"$ (3.2mm)
2. WHEN INSTALLING THIS UNIT, LOCAL, STATE, OR FEDERAL CODES SHOULD BE ADHERED TO. FOR INSTALLATION DIMENSIONS (LOCATIONS), WASTE AND SUPPLY REQUIREMENTS OTHER THAN SHOWN, DIMENSIONS MARKED (*) MUST BE ADJUSTED ACCORDINGLY.
3. REFER TO MTGR-17 INSTALLATION DRAWING FOR FRAME ROUGH-IN DIMENSIONS.
4. REFER TO 587A SERIES OPERATION AND MAINTENANCE MANUAL FOR PUSH BUTTON AND VALVE INSTALLATION/MAINTENANCE INSTRUCTIONS.
5. ROUGH-IN DIMENSIONS FOR FOUNTAIN HEIGHTS:
 - CHILD WHEELCHAIR HEIGHT: SEE SHEET 3 FIG 1
 - WASTE: 26-1/4" (667mm)
 - FOUNTAIN: 24" (610mm)
 - BUBBLER: 29-7/8" (756mm)
 - ADULT WHEELCHAIR HEIGHT: SEE SHEET 3 FIG 2
 - WASTE: 29-1/4" (743mm)
 - FOUNTAIN: 27" (686mm)
 - BUBBLER: 32-7/8" (832mm)
 - ADULT STANDING HEIGHT: SEE SHEET 3 FIG 3
 - WASTE: 34-3/4" (883mm)
 - FOUNTAIN: 32-1/2" (826mm)
 - BUBBLER: 39-9/8" (972mm)
6. REFER TO MODEL H1117.8HO/H1117.8HO2 INSTALLATION DRAWING SHEET 3 OF 3 ON HAWS WEBSITE WWW.HAWS.CO.COM FOR PERMISSIBLE BOWL MOUNTING PATTERNS. TWO WHEELCHAIR HEIGHT FOUNTAINS CANNOT BE MOUNTED SIDE BY SIDE PER ANSI A117.1

NOTES CONTINUED ON SHEET 3 OF 3

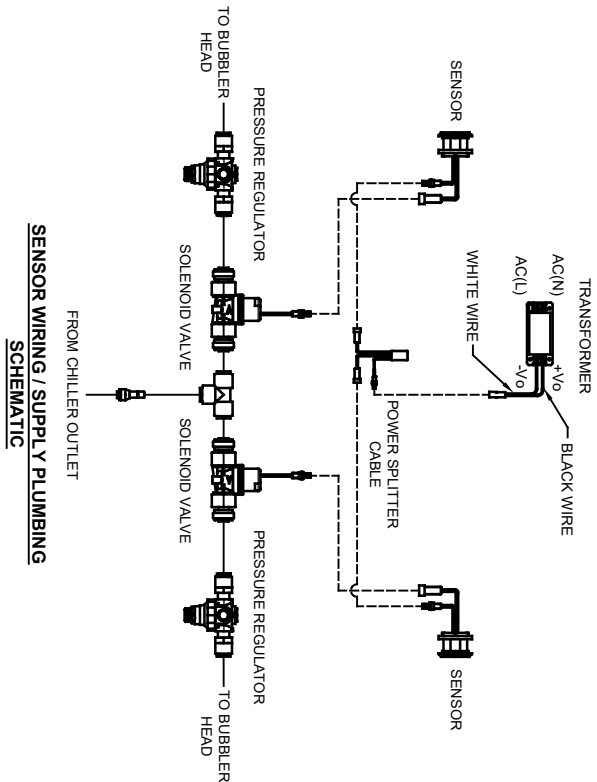
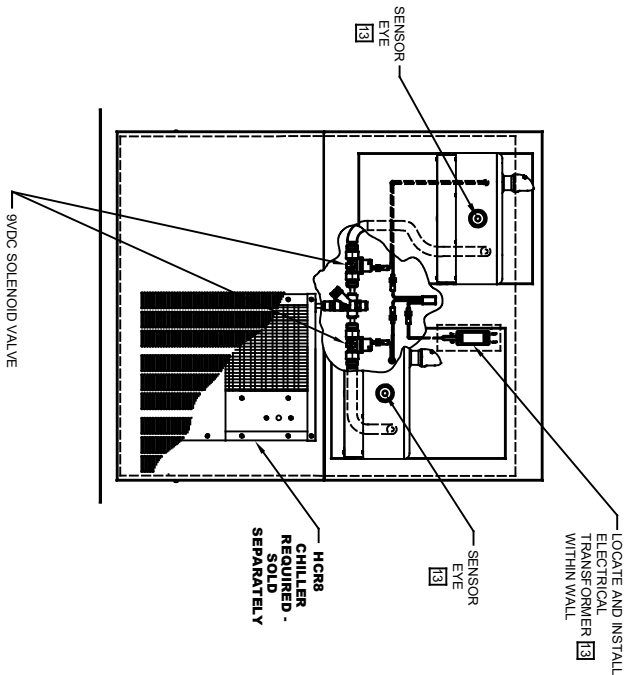
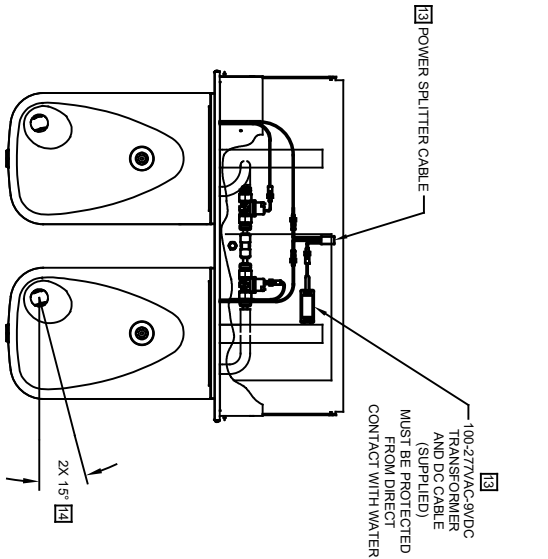


MODEL H1117.8HO SHOWN
MODEL H1117.8HO2 ON SHEET 2
(ROUGH-IN DIMENSIONS APPLY TO BOTH MODELS WITH EXCEPTIONS NOTED ON SHEET 2)

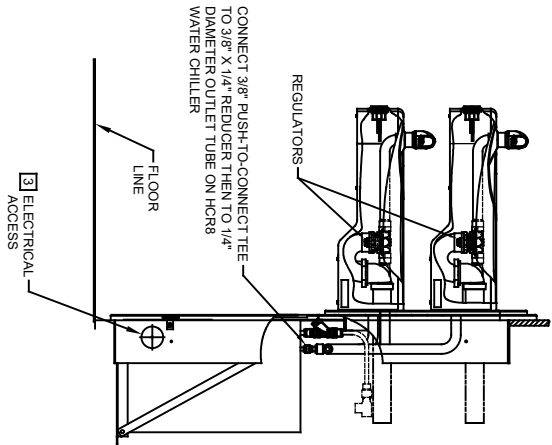


1456 KLEPPE LANE
SPARKS, NEVADA 89431
(775) 359-4712 FAX (775) 359-7424
E-MAIL: HAWS@HAWS.CO.COM
WEBSITE: WWW.HAWS.CO.COM

ECN NO. REVISED PERBY:	MODEL(S)
5706 1 ECU 5993 FV	H1117.8HO/H1117.8HO2
DRAWN: FV	PART NUMBER
DATE: 06/28/21	0510001207.D
APPROVED: FV	REVISION
DATE: 09/02/23	2
SCALE: NA	DRAWING TYPE
INSTALLATION	SIZE: A
SHEET 1 OF 3	



SENSOR WIRING / SUPPLY PLUMBING
SCHEMATIC



MODEL H1117.8HO2 SHOWN
MODEL H1117.8HO ON SHEET 1
(SEE SHEET 1 FOR APPLICABLE ROUGH-IN DIMENSIONS)

**Haws**[®]

1456 KLEPPE LANE
SPARKS, NEVADA 89431
(775) 359-4712 FAX (775) 359-7424
E-MAIL: HAWS@HAWS.CO.COM
WEBSITE: WWW.HAWS.CO.COM

ECN NO. REVISED PERBY: 5706 ECN 5993 FV
DRAWN: DATE: 06/28/21 FV
FV DATE: 06/28/21 FV
APPROVED: DATE: 06/15/23 FV

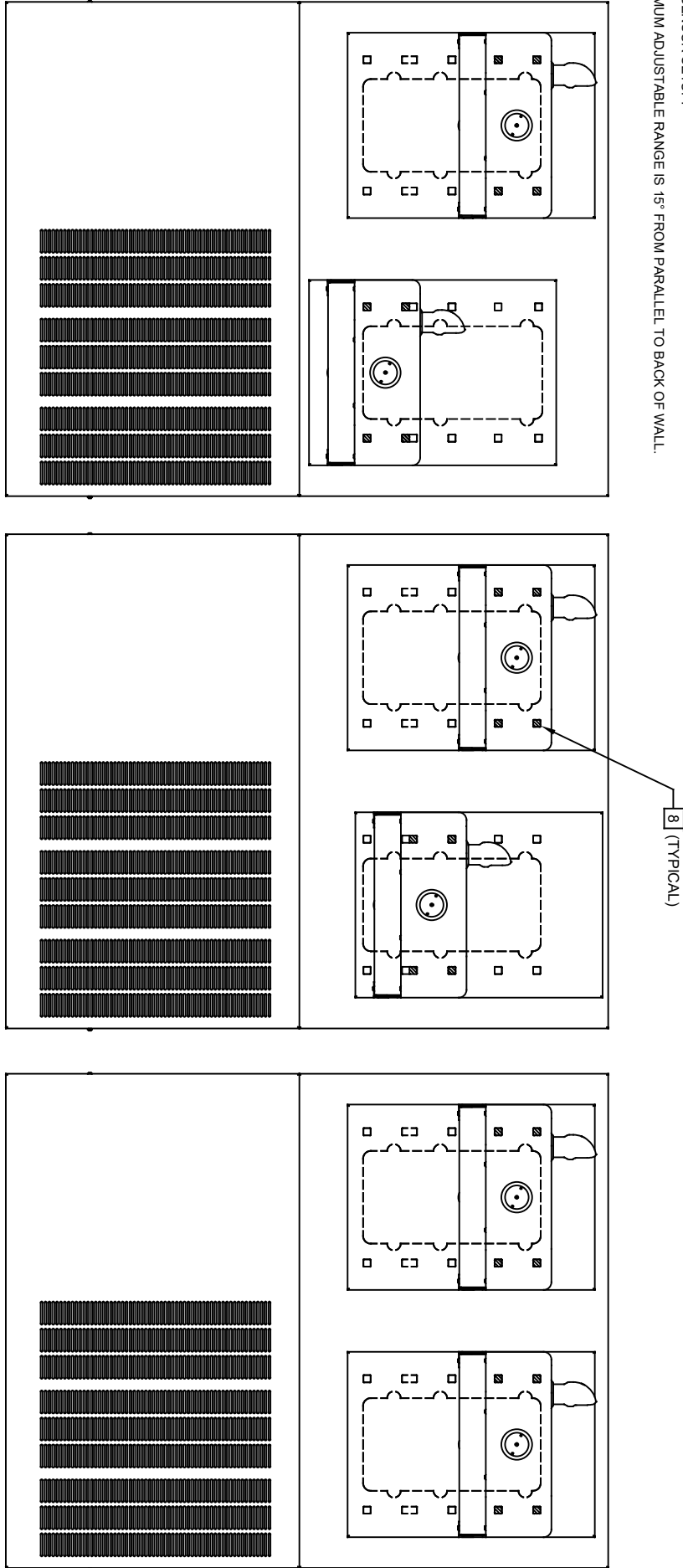
MODEL(S) H1117.8HO/H1117.8HO2

PART NUMBER 0510001207.D
REVISION 2

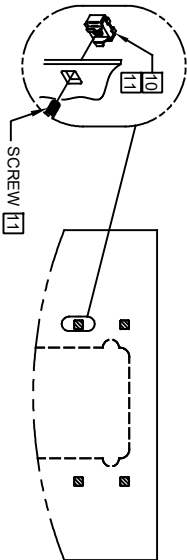
SCALE: NA DRAWING TYPE: INSTALLATION SIZE: A SHEET 2 OF 3

NOTES:

- [7] FIGURES 1 AND 2 ARE REVERSIBLE. CAN BE RIGHT OR LEFT SIDE HIGH.
- [8] USE SHADED HOLES TO MOUNT BOWLS AT INDICATED POSITIONS BASED ON COMBINATION SELECTED (FIGS. 1 THRU 3).
- 9. REFER TO SHEET 1 OF 3 NOTE 5. FOR INSTALLED FOUNTAIN DIMENSIONS.
- [10] INSERT 5/16"-18 PANEL NUT RETAINERS FROM OPPOSITE SIDE AT LOCATIONS SELECTED (SHOWN BY DARKENED HOLES). HOLE COMBINATION SHOWN (INSET) IS FOR REF. ONLY.
- [11] TO CHANGE FOUNTAIN MTG. SCREW LOCATIONS: FIRST REMOVE SCREWS AND THEN SQUEEZE CLIPS ON NUT RETAINER TO POP OUT. SNAP INTO NEW POSITIONS AND RE-ASSEMBLE SCREWS.
- [12] ALIGN HOLES IN CHILLER SUPPORT TRAY WITH HOLES IN FRAME AND FASTEN WITH #10 SHEETMETAL SCREWS.
- [13] REFER TO 1RKH0.H & 2RKH0.H OPERATION AND MAINTENANCE INSTRUCTIONS FOR TRANSFORMER AND SENSOR SETUP.
- [14] MAXIMUM ADJUSTABLE RANGE IS 15" FROM PARALLEL TO BACK OF WALL.



BOWL MOUNTING DETAIL



[7] FIGURE 1.
ADULT STANDING/CHILD WHEELCHAIR

[7] FIGURE 2.
ADULT STANDING/ADULT WHEELCHAIR

FIGURE 3.
ADULT STANDING/ADULT STANDING

BOWL MOUNTING PATTERNS



1456 KLEPPE LANE
SPARKS, NEVADA 89431
(775) 359-4712 FAX (775) 359-7424
E-MAIL: HAWS@HAWS.CO.COM
WEBSITE: WWW.HAWS.CO.COM

ECN NO. REVISED PER BY: FV
5706 1 ECN: 5993 FV
DRAWN: DATE: CHK'D: FV
FV 06/28/21 KM
APPROVED: DATE: 08/19/23

MODEL(S)
H11117.8HO/H11117.8HO2

PART NUMBER
0510001207.D
REVISION
2

SCALE: N/A DRAWING TYPE: INSTALLATION SIZE: A SHEET 3 OF 3