

FEATURES & BENEFITS

CONSTRUCTION

Rugged ADA accessible 18-gauge Type 304 Stainless Steel with a satin finish bowl, 14 gauge Type 304 Stainless Steel bottle filler that resists stains and corrosion, soft rounded corners, stainless steel satin finish back panels, vandal resistant bottom plate, and 1-1/4" integral trap.

BOTTLE FILLER

Vandal-resistant, 14-gauge Type 304 stainless steel bottle filler housing with touchless operation and 1 gpm (3.78 L) Haws laminar flow.

VANDAL RESISTANT

The bubbler head, sensors, drain strainer and bottom plates are locked in place, discouraging unwanted vandal tampering, and 30-second obstruction time-out to reduce tampering of sensor.

BUBBLER HEAD

Polished chrome-plated brass bubbler head with integral 11/16" dia. basin shank and stainless anti-rotation roll pin for vandal resistance strength. Shielded, angled stream opening provides a steady, sanitary source of drinking water at .45 gpm.

FOUNTAIN VALVES

Fountain incorporates touchless sensor operated stainless steel solenoid valves controlled by a transformer for hands-free operation. A pressure regulator is used to adjust the bubbler flow according to incoming water pressures.

MOUNTING

Heavy-duty 16-gauge galvanized steel mounting frame with welded-in heavy-duty 10 gauge mounting plate with pre-punched mounting holes. Further convenience is given to the chiller with the integral fold-out shelf.

OPTIONS

- Mounting Plate: Model 6700, in-wall mounting plate for model 1920.
- Mounting Plate: Model 6700R, on-wall mounting plate for model 1920.
- Support Frame: Model 6800 In-wall floor mounted fixture support legs, welded steel 4-bolt floor flanges, and supplied with 'U' bolts and hardware.
- Bottle Filler Stand: Model BTL1107, add-on stainless steel stand to place bottle on when 1920 bottle filler is used.

For more information, visit www.hawsc.com or call (888) 640-4297.



REQUIRED MODELS

H1109.8HO / MTGFR.SM / HCR8 / 1920HO / 6469 / BP15

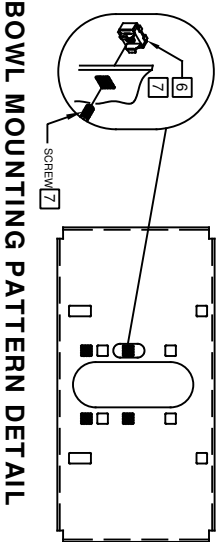
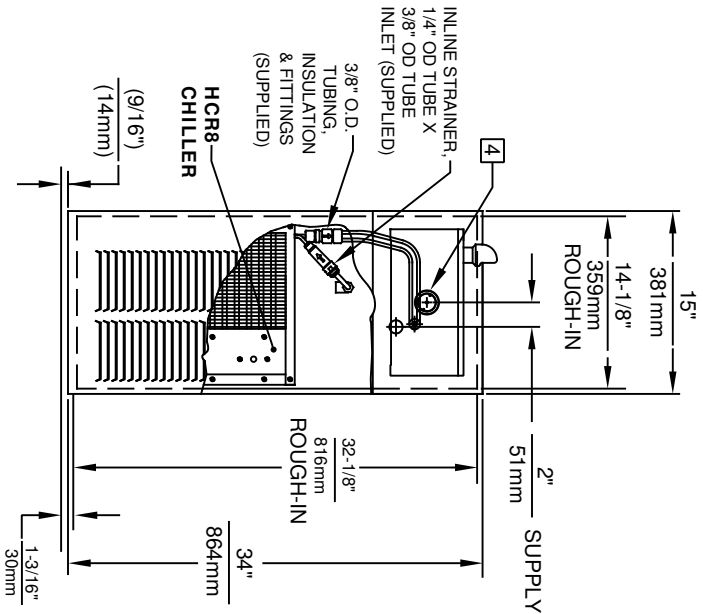
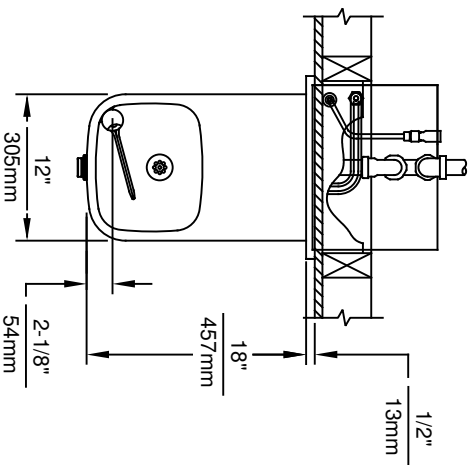
Order these items to make up the Model H1109.8HO-1920HO fountain with stainless steel back panel, bottle filler with stainless steel back plate, drip tray drain and chiller shown above.

FOR INDOOR USE ONLY

SPECIFICATIONS

Model H1109.8-1920HO electric vandal-resistant wall-mounted ADA motion activated water cooler and bottle filler shall include an 18-gauge Type 304 Stainless Steel satin-finish basin, 14 gauge bottle filler bracket, touchless sensor operated stainless steel solenoid valves with 30 second obstruction timeout controlled by a transformer, 100% lead-free waterways, polished chrome-plated brass vandal-resistant bubbler head, 1 gpm (3.78 L) laminar flow bottle filler, polished chrome-plated brass vandal-resistant waste strainer, vandal-resistant bottom plates, satin stainless steel back panel and louvered intrusion-proof grill, and 1-1/4"NPT trap. The R-134a refrigeration system is hermetically sealed and delivers a minimum of 8 gph (30.3 L) of water at 50° F (10° C) cooled from 80° F (26.7° C) inlet water at 90° F (32.2° C) ambient. 115 Volts, 60Hz, rated watts: 370, full load amps: 5. Haws electric water coolers comply with ARI Standard 1010 and ANSI A117.1, and are listed by Underwriter Laboratories to U.S. and Canadian standards. Manufactured to be lead-free by all known definitions including NSF/ANSI/CAN 61-Section 9, NSF/ANSI/ CAN 372, California Proposition 65, and the Federal Safe Drinking Water Act. Product is compliant to California Health and Safety Code 116875 (AB 1953-2006), and 116876 (AB 100) "NSF/ANSI/CAN 61: Q ≤ 1".

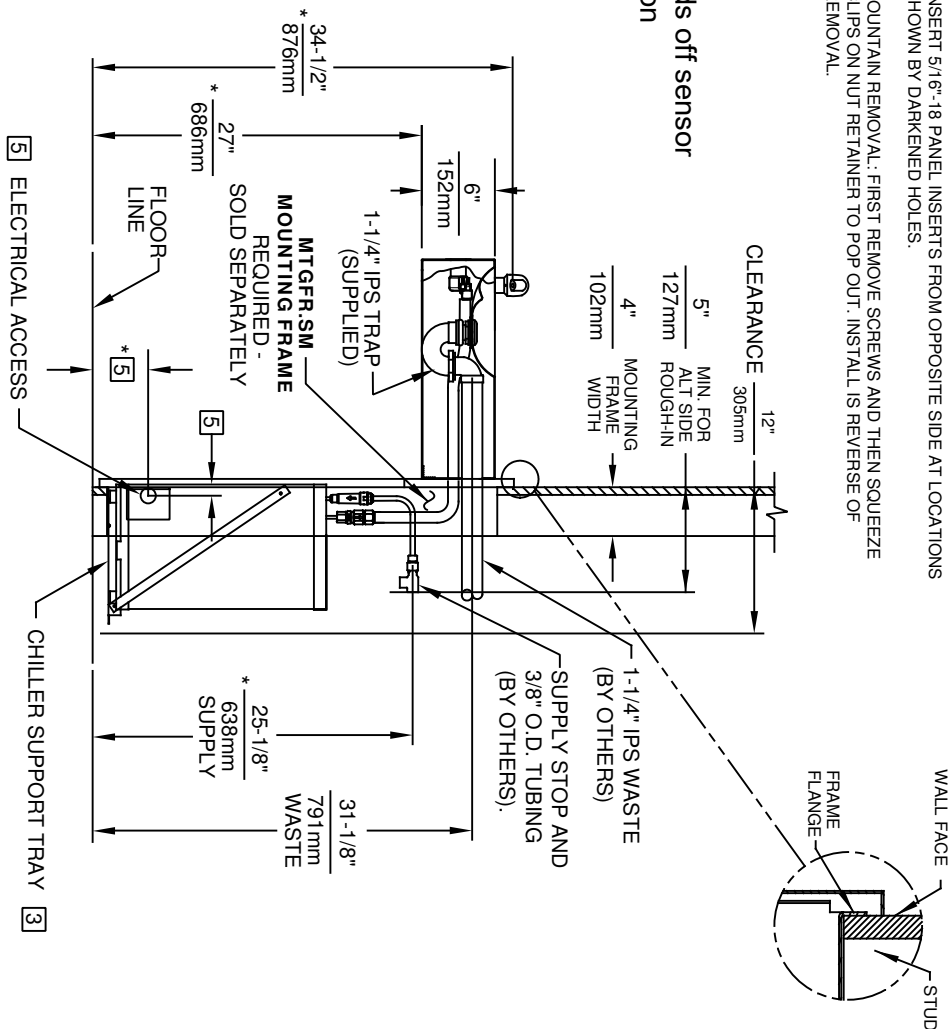




NOTES:

1. HOLD ROUGH-IN DIMENSIONS ±1/8" (3.2mm)
2. WHEN INSTALLING THIS UNIT, LOCAL, STATE, OR FEDERAL CODES SHOULD BE ADHERED TO. FOR MARKED (*) MUST BE ~~RESERVED FOR A REPAIR~~ **GREATER** THAN SHOWN, DIMENSIONS AND FASTEN WITH #10 SHEETMETAL SCREWS.
3. ALIGN HOLES IN CHILLER SUPPORT TRAY WITH HOLES IN FRAME
4. REFER TO 5874 SERIES OPERATION AND MAINTENANCE MANUAL FOR PUSH BUTTON AND VALVE INSTALLATION/MAINTENANCE INSTRUCTIONS.
5. REFER TO MTGFR:SM INSTALLATION DRAWING FOR ROUGH-IN DIMENSIONS.
6. INSERT 5/16" -18 PANEL INSERTS FROM OPPOSITE SIDE AT LOCATIONS SHOWN BY DARKENED HOLES.
7. FOUNTAIN REMOVAL: FIRST REMOVE SCREWS AND THEN SQUEEZE CLIPS ON NUT RETAINER TO POP OUT. INSTALL IS REVERSE OF REMOVAL.

Available with hands off sensor in lieu of push button



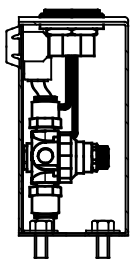
BOWL MOUNTING PATTERN DETAIL

		MODEL(S)	
1456 KLEPPE LANE SPARKS, NEVADA 89431 (775) 359-4712 FAX (775) 359-7424 E-MAIL: HAWS@HAWSCO.COM WEBSITE: WWW.HAWSCO.COM		H1109.8	
ECN NO. REVISED PER BY: EON:5527	DATE: 08/31/98	CHKD: DP	SCALE: 1:15
DRAWN: F.VASQUEZ	DATE: 08/31/98	CHKD: DP	DRAWING TYPE: INSTALLATION
APPROVED: E.V.	DATE: 04/02/20	SCALE: 1:15	DRAWING TYPE: INSTALLATION
PART NUMBER: 0002080252.D		REVISION: 19	

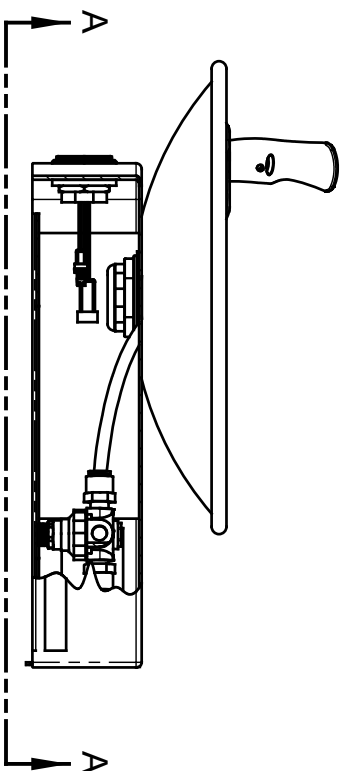
NOTES:

1. 1RKHO.P AND 1RKHO.H RETROFIT KITS ALLOW INDOOR FOUNTAINS TO BE CONVERTED FROM A HAWS 5874 PUSH BUTTON VALVE TO HANDS-OFF (TOUCHLESS) OPERATION. FOUNTAINS (NOT SUPPLIED) MAY BE MOUNTED ON THE EXTERNAL WALL OF A BUILDING PROVIDED THE TRANSFORMER SHALL BE MOUNTED INSIDE THE WALL AND PROTECTED FROM WATER AS SHOWN IN THIS INSTALLATION PER NEC/CEC AND LOCAL CODE. AVOID DIRECT CONTACT WITH SUNLIGHT ON THE SENSOR LENS.
2. RETROFIT KIT MODELS:
 1RKHO.P: INDOOR HO RETROFIT KIT (INCLUDES HO SENSOR WITH MOUNTING HARDWARE, SOLENOID VALVE, REGULATOR, AND 100-240V PLUG-IN TRANSFORMER - SEE SHEET 2).
 1RKHO.H: INDOOR HO RETROFIT KIT (INCLUDES HO SENSOR WITH MOUNTING HARDWARE, SOLENOID VALVE, REGULATOR, AND 100-277V HARDWIRE TRANSFORMER - SEE SHEET 3).
 1RKHO.P REQUIRES 100-240VAC POWER CONNECTION. 1RKHO.H REQUIRES 100-277V POWER CONNECTION.
3. TRANSFORMERS MUST BE MOUNTED SUCH THAT THEY ARE PROTECTED FROM WATER.
4. 1RKHO.P TRANSFORMER IS COMPATIBLE WITH TYPE A AND TYPE B NORTH AMERICAN ELECTRICAL OUTLETS. FOR OTHER RECEPTACLE TYPES, AN ADAPTER (NOT SUPPLIED) MUST BE PROVIDED BY OTHERS.

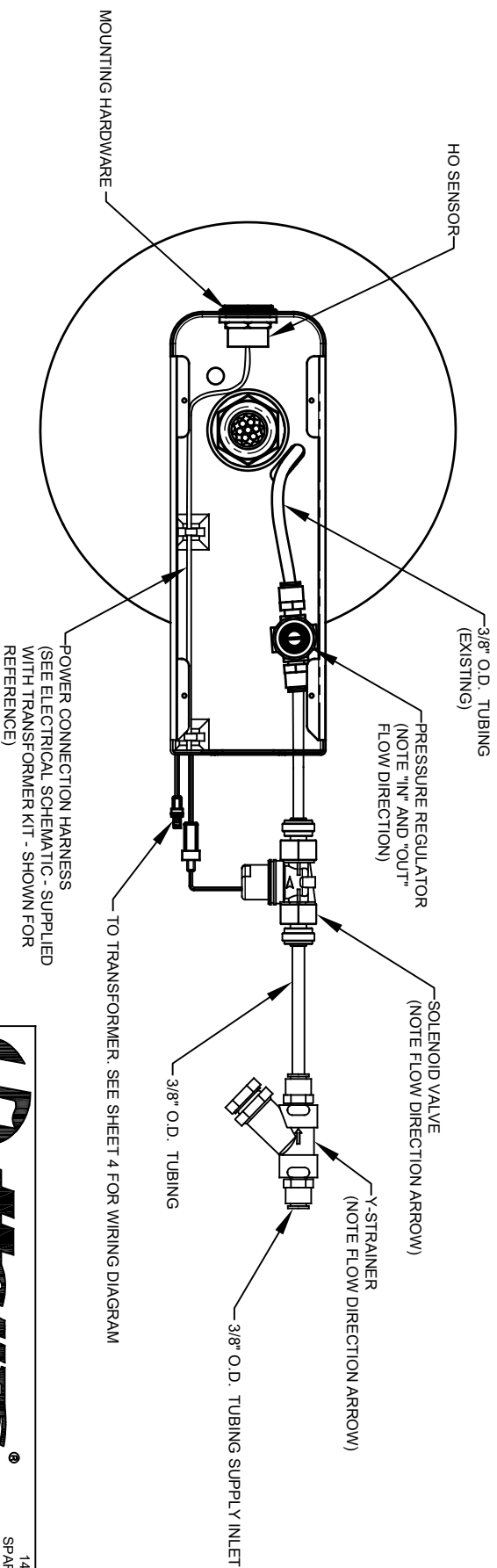
(NOTES CONTINUED ON SHEET 4)



EXAMPLE 1920 BOTTLE FILLER INSTALLATION



EXAMPLE 1001 FOUNTAIN INSTALLATION



VIEW A - A

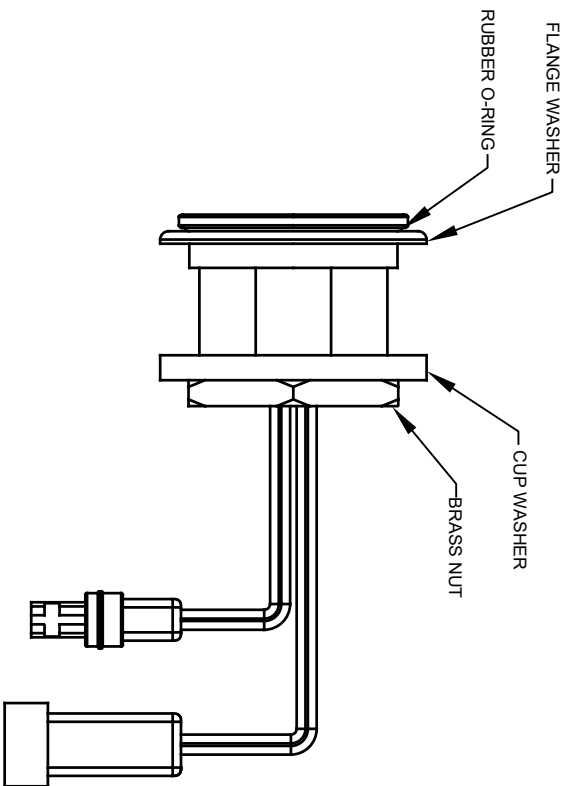
(BOTTOM PLATE OMITTED FOR CLARITY)



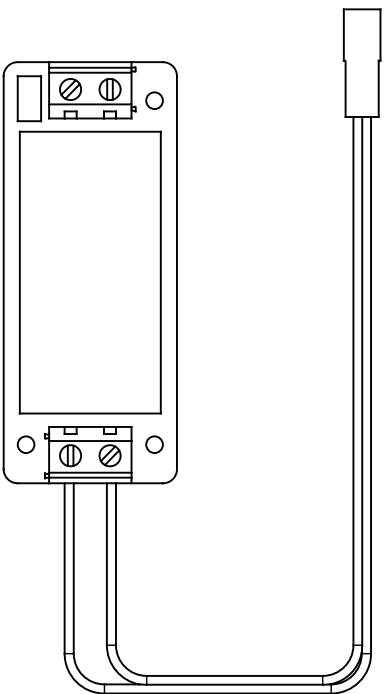
Haws

1459 KLEPPE LANE
 SPARKS, NEVADA, 89431
 (775) 359-4712 FAX (775) 359-7424
 E-MAIL: HAWS@HAWS.CO.COM
 WEBSITE: WWW.HAWS.CO.COM

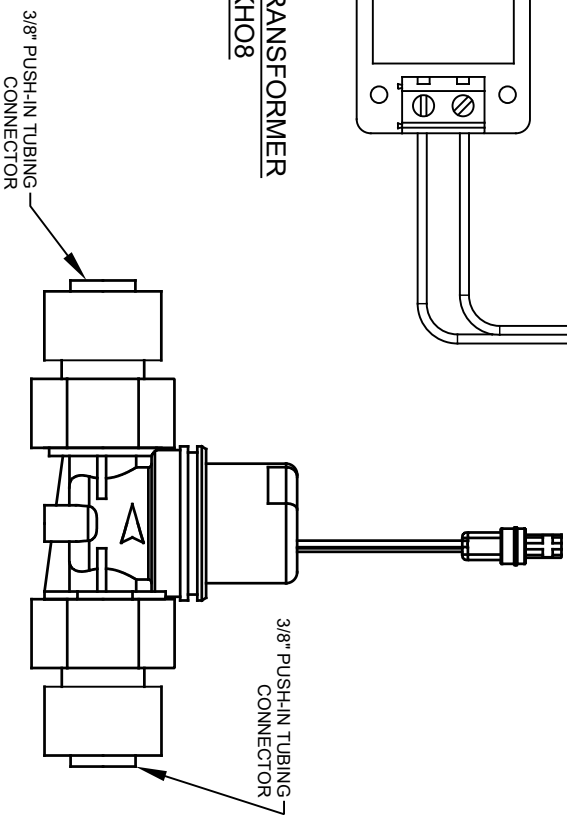
ECN NO. REVISED PER BY:	MODEL(S)	PART NUMBER
5898 ECN: 5749 BJM	1RKHO.P / 1RKHO.H	0580001133.D
DATE: CHKD:	SINGLE HANDS-OFF RETRO-FIT KIT	REVISION:
1/23/20 EV		5
APPROVED: BJM	SCALE: N/A	DRAWING TYPE: INSTALLATION
DATE: 10/26/21		SIZE: A SHEET: 1 OF 4



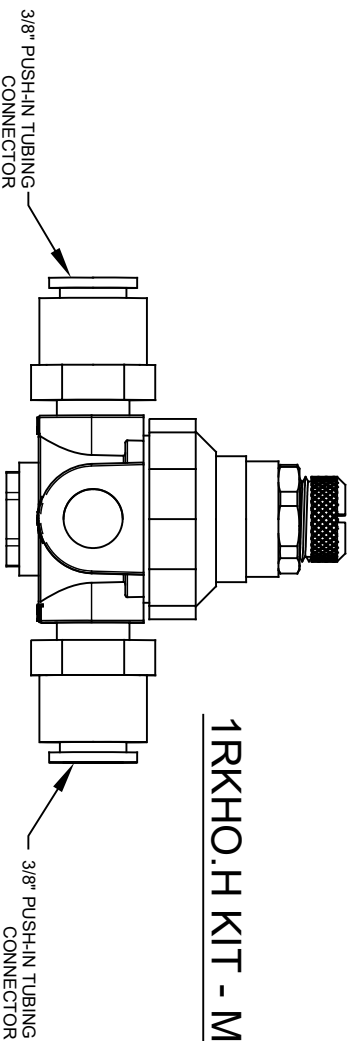
HO SENSOR ASSEMBLY
VRKH06



HARDWARE TRANSFORMER
VRKH08

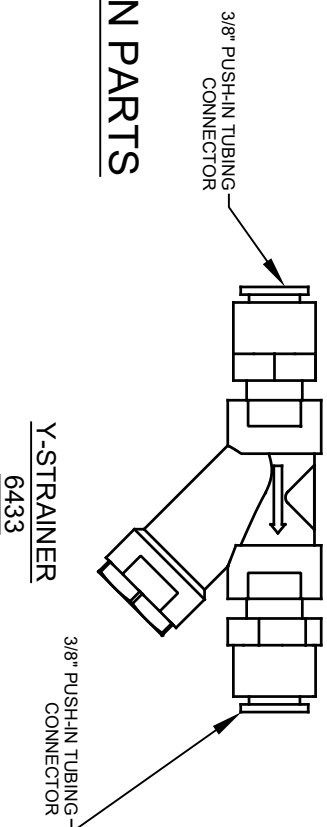


SOLENOID VALVE ASSEMBLY
VRKH05



VALVE REGULATOR
5867

1RKHO.H KIT - MAIN PARTS



Haws

1459 KLEPPE LANE
SPARKS, NEVADA, 89431
(775) 359-4712 FAX (775) 359-7424
E-MAIL: HAWS@HAWSCO.COM
WEBSITE: WWW.HAWSCO.COM

ECN NO. REVISED PER BY:	MODEL(S)	PART NUMBER
5898 ECN: 5749 BJM	1RKHO.P / 1RKHO.H	0580001133.D
DATE: 02/09/21	DATE: 02/09/21	REVISION: 4
CHKD: FV	SCALE: N/A	DRAWING TYPE: INSTALLATION
APPROVED: BJM	DATE: 10/20/21	SIZE: A
		SHEET 3 OF 4