

FEATURES & BENEFITS

CONSTRUCTION

One-piece drinking fountain with low-profile design made of 14 gauge Type 304 stainless steel with 1/4" (.6 cm) thick stainless back plate welded in, and vandal-resistant stainless bottom plate. Satin finish resists stains and corrosion.

VANDAL RESISTANT

The bubbler head, drain strainer and bottom plate are locked in place, discouraging unwanted vandal tampering.

BUBBLER HEAD

Polished chrome-plated brass bubbler head with integral 11/16" dia. basin shank and stainless anti-rotation roll pin for vandal resistance strength. Shielded, angled stream opening provides a steady, sanitary source of drinking water at .45 gpm.

DRINKING FOUNTAIN VALVE

Fountain incorporates a touchless sensor operated stainless steel solenoid valve controlled by a transformer for handsfree operation. A pressure regulator is used to adjust the bubbler flow according to incoming water pressures.

MOUNTING

Heavy-duty 16-gauge galvanized steel mounting frame with welded-in heavy-duty 10 gauge mounting plate with pre-punched mounting holes. Further convenience is given to the chiller with the integral fold-out shelf.

INTEGRATED TRAP

All cast brass 1-1/4" NPT adjustable trap completely concealed inside bottom plate for easy installation and access.

HANDS FREE

Touchless operation for safety and peace of mind.



REQUIRED MODELS

Model H1107.8HO vandal-resistant ADA wall mounted motion activated chilled drinking fountain shall include an 14 gauge Type 304 Stainless Steel satin finish basin, touchless sensor operated stainless steel solenoid valve with 30-second obstruction time-out controlled by a transformer, 100% lead-free waterways, polished chrome-plated brass vandal-resistant bubbler head, polished chrome-plated brass vandal-resistant waste strainer, stainless steel satin finish back panel and louvered intrusion-proof grill, vandal-resistant bottom plate, and 1-1/4" NPT trap. The R-134a refrigeration system is hermetically sealed and delivers a minimum of 8 gph (30.3 L) of water at 50° F (10° C) cooled from 80° F (26.7° C) inlet water at 90° F (32.2° C) ambient. 115 Volts, 60Hz, rated watts: 370, full load amps: 5

REQUIRES MODEL HCR8 and MTGFR.7 PRICED SEPARATELY

FOR INDOOR USE ONLY

OPTIONS

- Bottle Filler: Model 1920HO, bottle filler can be a stand-alone station, or mounted above Haws 1107LHO series drinking fountain models.
- Bottle Filler Stand: Model BTL1107, add-on stainless steel stand to place bottle on when 1920HO bottle filler is used.
- Water Filter: Model 6426, 10" x 2" (25.4 x 5.1 cm), in-line lead removal element that reduces lead from incoming water supply.

For more information, visit www.hawsco.com or call (888) 640-4297.

SPECIFICATIONS

Specifically, this type fountain may be placed in settings such as: schools, office buildings, shopping malls, and other indoor environments. Electric water coolers are not recommended or designed for outdoor applications or enclosed pool areas (chlorine). These conditions may void warranty. Model meets all current Federal Regulations for the disabled including those in the Americans with Disabilities Act. Haws manufactures drinking fountains, faucets and electric water coolers to be lead-free by all known definitions including NSF/ANSI/CAN 61- Section 9, NSF/ANSI/CAN 372, California Proposition 65, and the Federal Safe Drinking Water Act. Product is compliant to California Health and Safety Code 116875 (AB 1953-2006), and 116876 (AB 100) "NSF/ANSI/CAN 61: Q ≤ 1". Haws electric water coolers comply with ARI Standard 1010 and ANSI A117.1, and are listed by Underwriter Laboratories to U.S. and Canadian standards.

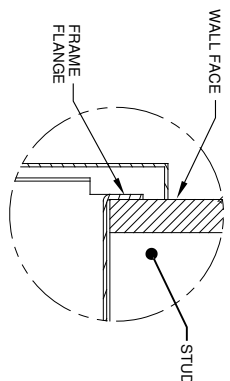


NOTES:

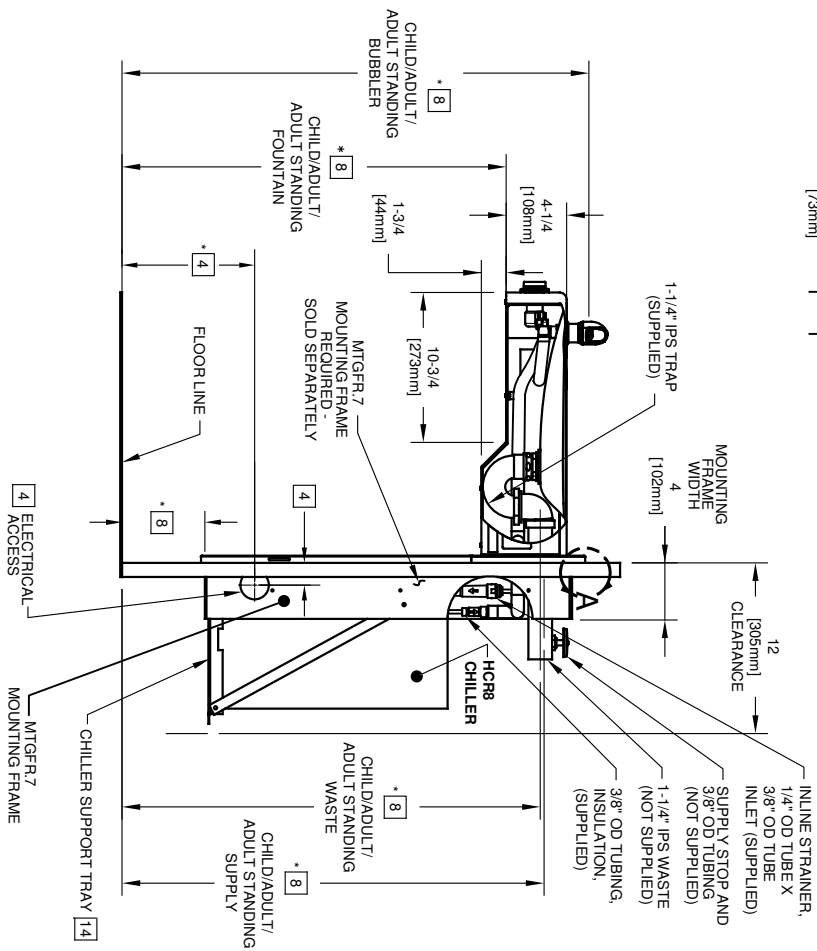
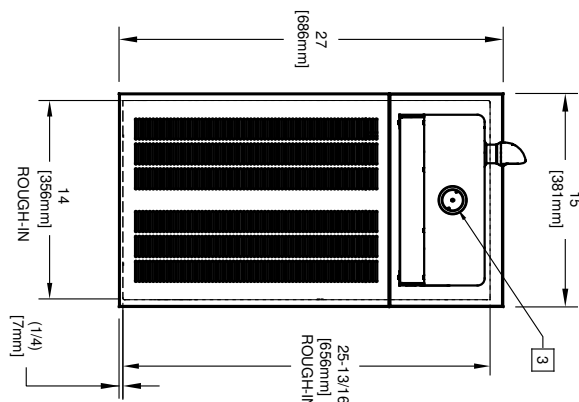
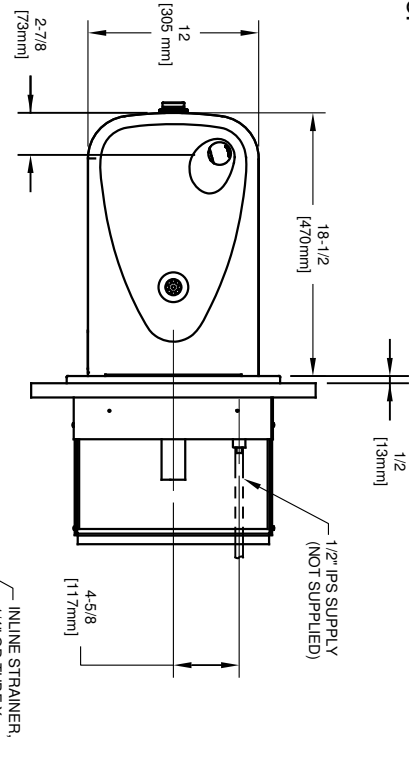
1. HOLD ROUGH-IN DIMENSIONS $\pm 1/8"$ (3.2mm)
2. WHEN INSTALLING THIS UNIT, LOCAL, STATE, OR FEDERAL CODES SHOULD BE ADHERED TO. FOR INSTALLATION HEIGHTS OTHER THAN SHOWN, DIMENSIONS MARKED () MUST BE ADJUSTED ACCORDINGLY.
3. REFER TO 5874 SERIES OPERATION AND MAINTENANCE MANUAL FOR PUSH BUTTON AND VALVE INSTALLATION/MAINTENANCE INSTRUCTIONS.
4. REFER TO MTGFR.7 INSTALLATION DRAWING FOR FRAME ROUGH-IN DIMENSIONS.
5. INSERT 5/16"-18 PANEL NUT RETAINERS FROM OPPOSITE SIDE AT LOCATIONS SHOWN.
6. FOUNTAIN REMOVAL: FIRST REMOVE SCREWS, AND THEN SQUEEZE CLIPS ON NUT RETAINER TO POP OUT. INSTALL IS REVERSE OF REMOVAL.
7. ALIGN HOLES IN CHILLER SUPPORT TRAY WITH HOLES IN FRAME AND FASTEN WITH #10 SHEET METAL SCREWS.
8. ROUGH-IN DIMENSIONS FOR FOUNTAIN HEIGHTS:
 - CHILD WHEELCHAIR HEIGHT:
 - WASTE: 26-1/4" (667mm)
 - SUPPLY: 26-1/8" (664mm)
 - FOUNTAIN: 24" (610mm)
 - BUBBLER: 25-7/8" (736mm)
 - FRAME: 3-1/8" (79mm)
 - ADULT WHEELCHAIR HEIGHT:
 - WASTE: 29-1/4" (743mm)
 - SUPPLY: 29-1/8" (740mm)
 - FOUNTAIN: 27" (686mm)
 - BUBBLER: 32-7/8" (832mm)
 - FRAME: 6-1/8" (156mm)
 - ADULT STANDING HEIGHT:
 - WASTE: 34-3/4" (883mm)
 - SUPPLY: 34-5/8" (879mm)
 - FOUNTAIN: 32-1/2" (826mm)
 - BUBBLER: 39-3/8" (972mm)
 - FRAME: 11-5/8" (384mm)

Available with hands off sensor in lieu of push button

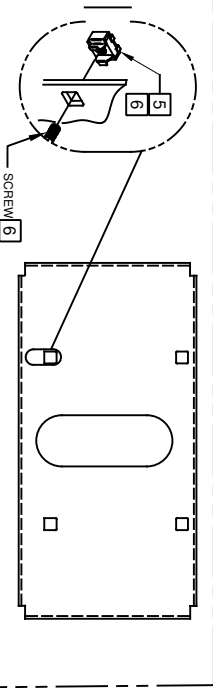
IMPORTANT: MOUNTING FRAME MUST BE INSTALLED SO THAT LIP OF FRAME SITS AGAINST FINISHED WALL FACE.




DETAIL A



BOWL MOUNTING DETAIL



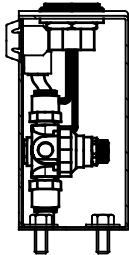
**Haws**
1456 KLEPPE LANE
SPARKS, NEVADA 89431
(775) 359-4712 FAX (775) 359-7424
E-MAIL: HAWS@HAWS.CO.COM
WEBSITE: WWW.HAWS.CO.COM

ECN NO. REVISED PER BY:		MODEL(S)	
DRAWN: ECN 5545	FV	H1107.8	
DATE: 12/19/06	CHKD: DP	PART NUMBER 0002080221.D	
APPROVED: 06/26/20	DATE:	REVISION 15	
SCALE: N/A	DRAWING TYPE: INSTALLATION	SIZE: A SHEET 1 OF 1	

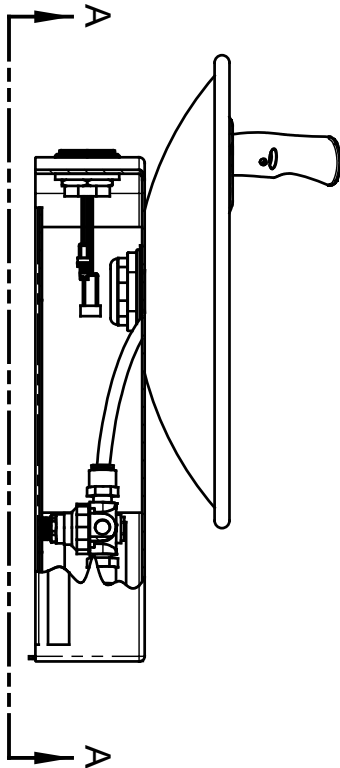
NOTES:

1. 1RKHO.P AND 1RKHO.H RETROFIT KITS ALLOW INDOOR FOUNTAINS TO BE CONVERTED FROM A HAWS 5874 PUSH BUTTON VALVE TO HANDS-OFF (TOUCHLESS) OPERATION. FOUNTAINS (NOT SUPPLIED) MAY BE MOUNTED ON THE EXTERNAL WALL OF A BUILDING PROVIDED THE TRANSFORMER SHALL BE MOUNTED INSIDE THE WALL AND PROTECTED FROM WATER AS SHOWN IN THIS INSTALLATION PER NEC/CEC AND LOCAL CODE. AVOID DIRECT CONTACT WITH SUNLIGHT ON THE SENSOR LENS.
2. RETROFIT KIT MODELS:
1RKHO.P: INDOOR HO RETRO-FIT KIT (INCLUDES HO SENSOR WITH MOUNTING HARDWARE, SOLENOID VALVE, REGULATOR, AND 100-240V PLUG-IN TRANSFORMER - SEE SHEET 2).
1RKHO.H: INDOOR HO RETRO-FIT KIT (INCLUDES HO SENSOR WITH MOUNTING HARDWARE, SOLENOID VALVE, REGULATOR, AND 100-277V HARDWIRE TRANSFORMER - SEE SHEET 3).
1RKHO.P REQUIRES 100-240VAC POWER CONNECTION. 1RKHO.H REQUIRES 100-277V POWER CONNECTION.
4. TRANSFORMERS MUST BE MOUNTED SUCH THAT THEY ARE PROTECTED FROM WATER.
5. 1RKHO.P TRANSFORMER IS COMPATIBLE WITH TYPE A AND TYPE B NORTH AMERICAN ELECTRICAL OUTLETS. FOR OTHER RECEPTACLE TYPES, AN ADAPTER (NOT SUPPLIED) MUST BE PROVIDED BY OTHERS.

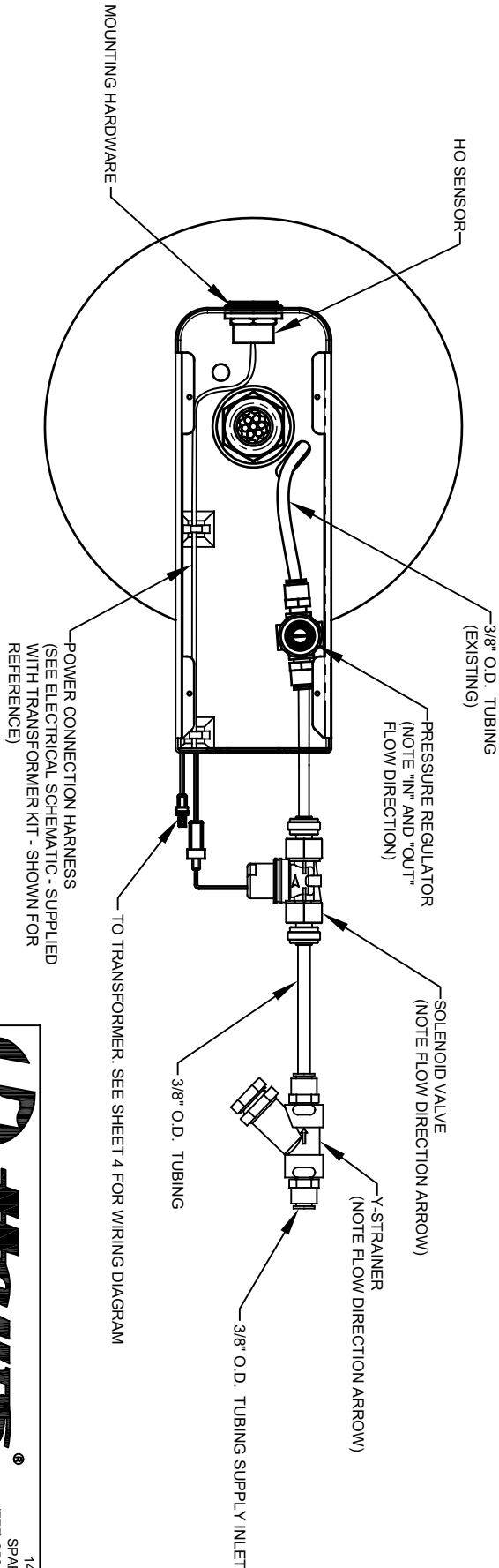
(NOTES CONTINUED ON SHEET 4)



EXAMPLE 1920 BOTTLE FILLER INSTALLATION



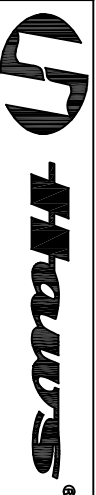
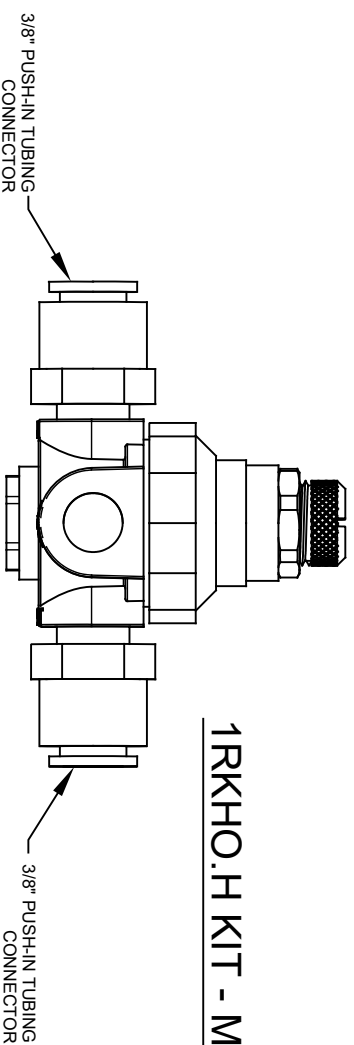
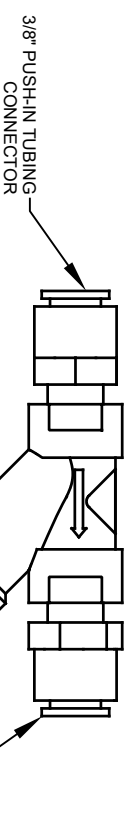
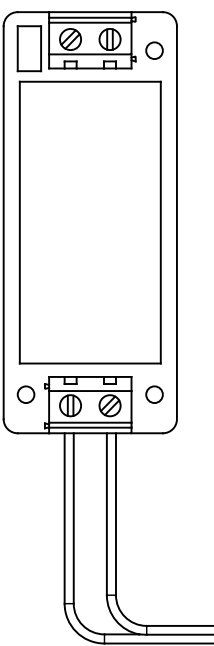
EXAMPLE 1001 FOUNTAIN INSTALLATION



VIEW A - A

(BOTTOM PLATE OMITTED FOR CLARITY)

		-Haws®		1456 KLEPPE LANE SPARKS, NEVADA 89431 (775) 359-4712 FAX (775) 359-7424 E-MAIL: HAWS@HAWS.CO.COM WEBSITE: WWW.HAWS.CO.COM	
ECN NO. REVISED PER BY:		MODEL(S)		PART NUMBER	
5598	ECN 5749 BJM	1RKHO.P / 1RKHO.H		0580001133.D	
DRAWN:	DATE:			REVISION	
BJM	1/23/20			5	
APPROVED:	DATE:				
BJM	10/20/21				
SCALE:		N/A	DRAWING TYPE:	INSTALLATION	
SINGLE HANDS-OFF RETRO-FIT KIT		SIZE:	A	SHEET:	1 OF 4



ECON NO. REVISED PENALT:		MODEL(S)		PART NUMBER	
5598	ECON 5749	1RKHO.P / 1RKHO.H		0560001133.D	
DRAWN:	DATE:	SINGLE HANDS-OFF RETRO-FIT KIT		REVISION	
B.M.	02/09/21			4	
APPROVED:	DATE:				
B.M.	10/26/21				
SCALE:	N/A	DRAWING TYPE	INSTALLATION	SIZE: A	SHEET 3 OF 4