



# model H1011.8HPSHO

Chilled Vandal-Resistant ADA Motion-Activated/Push Button High-Polished Fountain

## FEATURES & BENEFITS

### CONSTRUCTION

Rugged ADA accessible 18 gauge Type 304 high polished Stainless Steel swirl design bowl, 14 gauge Type 304 high polished Stainless Steel bracket, and a vandal-resistant bottom plate provides a long lasting unit with added peace of mind.

### VANDAL RESISTANT

The bubbler heads, push buttons, round bowls, drain strainers and bottom plates are locked in place, discouraging unwanted vandal tampering.

### BUBBLER HEADS

Polished chrome-plated brass bubbler heads with integral laminar flow prevents splashing while providing a superior flow pattern. The integral 11/16" dia. basin shank and stainless anti-rotation roll pin for vandal resistance strength. Shielded, angled stream opening provides a steady source of drinking water at .45 gpm.

### DRINKING FOUNTAIN VALVES

Fountain incorporates a touchless sensor operated stainless steel solenoid valve controlled by a transformer on one side and a push-button activated valve which offers the only all stainless steel valve body that is machined out of solid bar stock and is fully serviceable through the front of the push button assembly offering access to the water control cartridge and integral water supply strainer on the other.

### TEMPOR RESISTANT

30-second obstruction time-out to reduce tampering of sensor.

### MOUNTING

Heavy-duty 16-gauge galvanized steel mounting frame with welded-in heavy-duty 10 gauge mounting plate with pre-punched mounting holes. Further convenience is given to the chiller with the integral fold-out shelf.

## OPTIONS

- Bottle Filler: Model 1920HPSHO, bottle filler can be a stand-alone station, or mounted above Haws 1011HPSHO series drinking fountain models.
- Back Panel: Model BP32HPS, satin finish stainless steel 32" back panel for model 1920HPSHO bottle filler.
- Bottle Filler Stand: Model BTL1001, add-on stainless steel stand to place bottle on when 1920HPSHO bottle filler is used.
- Custom Logo Panel: Model 6475, Hydration By Haws" logo panel with customization options.

For more information, visit [www.hawsco.com](http://www.hawsco.com) or call (888) 640-4297.



## SPECIFICATIONS

Model H1011.8HPSHO electric vandal-resistant ADA wall mounted combination motion activated/push button drinking fountain shall include dual 18 gauge Type 304 polished stainless steel basins with integral swirl design, 14 gauge Type 304 polished stainless steel wall brackets, 100% lead-free waterways, touchless sensor operated solenoid valve with 30-second obstruction time-out on one side, and vandal-resistant push-button operated stainless steel valve with front-accessible cartridge and flow adjustment on the other, polished chrome-plated brass vandal-resistant bubbler heads with integral laminar anti-squirt flow, chrome-plated brass vandal-resistant waste strainers, vandal-resistant bottom plates, high-polished stainless steel back panel and louvered intrusion-proof grill, high and low fountain mounting levels, and 1-1/4" O.D. (3.2 cm) waste pipes. The R-134a refrigeration system is hermetically sealed and delivers a minimum of 8 gph (30.3 L) of water at 50° F (10° C) cooled from 80° F (26.7° C) inlet water at 90° F (32.2° C) ambient. 115 Volts, 60 Hz, rated watts: 370, full load amps.

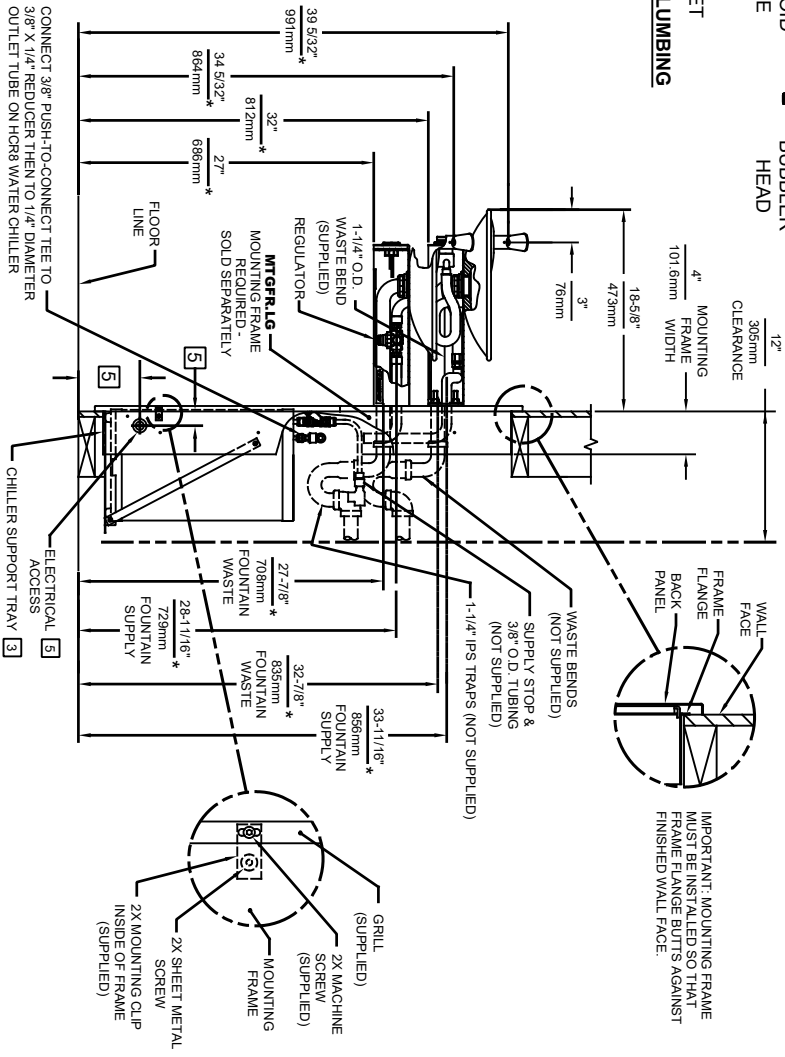
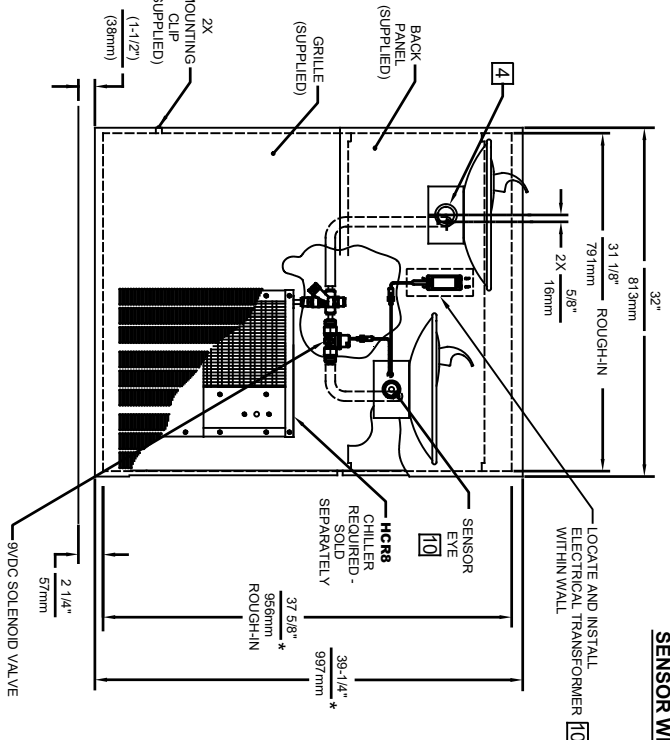
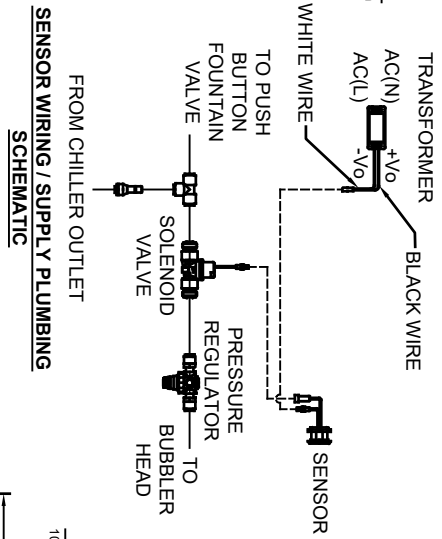
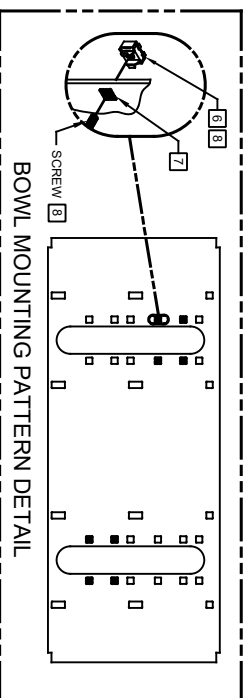
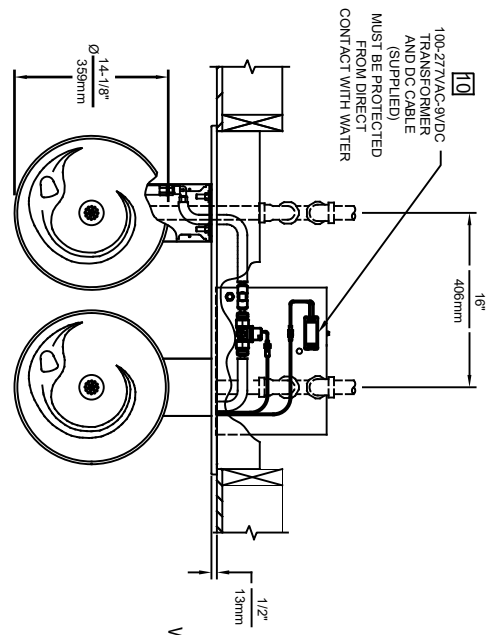
**REQUIRES MODEL HCR8 AND MTGFR.LG PRICED SEPARATELY.**

**FOR INDOOR USE ONLY**

## APPLICATIONS



Specifically, this type fountain may be placed in settings such as: schools, office buildings, shopping malls, and other indoor environments where there is a demand for a chilled water source and/or wheelchair access. Electric water coolers are not recommended or designed for outdoor applications or enclosed pool areas (chlorine). These conditions may void warranty. Model meets all current Federal Regulations for the disabled including those in the Americans with Disabilities Act. Haws manufactures drinking fountains, faucets and electric water coolers to be lead-free by all known definitions including NSF/ANSI/CAN 61- Section 9, NSF/ANSI/CAN 372, California Proposition 65, and the Federal Safe Drinking Water Act. Product is compliant to California Health and Safety Code 116875 (AB 1953-2006), and 116876 (AB 100) "NSF/ANSI/CAN 61: Q ≤ 1". Haws electric water coolers comply with ARI Standard 1010 and ANSI A117.1, and are listed by Underwriter Laboratories to U.S. and Canadian standards.





- NOTES:
1. HOLD ROUGH-IN DIMENSIONS  $\pm 1/8"$  (3.2mm).
  2. WHEN INSTALLING THIS UNIT, LOCAL, STATE, OR FEDERAL CODES SHOULD BE ADHERED TO. FOR INSTALLATION DIMENSIONS (LOCATIONS), WASTE AND SUPPLY DIMENSIONS SHOWN ARE MINIMUM DIMENSIONS. DIMENSIONS MARKED (\*) MUST BE ADJUSTED ACCORDINGLY.
  3. ALIGN HOLES IN CHILLER SUPPORT TRAY WITH HOLES IN FRAME AND FASTEN WITH #10 SHEETMETAL SCREWS.
  4. REFER TO 5874 SERIES OPERATION AND MAINTENANCE MANUAL FOR PUSH BUTTON AND VALVE INSTALLATION/MAINTENANCE INSTRUCTIONS.
  5. REFER TO MTGR1LG INSTALLATION DRAWING FOR ROUGH-IN DIMENSIONS.
  6. INSERT 5/16"-18 PANEL INSERTS FROM OPPOSITE SIDE AT LOCATIONS SHOWN BY PARKERED HOLES. HOLE COMBINATIONS SHOWN ARE FOR USE WITH LOW FOUNTAIN ON THE RIGHT AND HI FOUNTAIN ON THE LEFT. USE OPPOSITE HOLES FOR HI ON RIGHT AND LOW ON LEFT.
  7. HOLE COMBINATION SHOWN BELOW IS FOR USE WITH LOW FOUNTAIN ON THE RIGHT AND HIGH FOUNTAIN ON THE LEFT. USE OPPOSITE HOLES FOR HIGH ON RIGHT AND LOW ON LEFT.
  8. TO CHANGE FOUNTAIN MTG. SCREW LOCATIONS, FIRST REMOVE SCREWS AND THEN SQUEEZE CLIPS ON NUT REMAINER TO POP OUT. SNAP INTO NEW POSITIONS AND REASSEMBLE SCREWS.
  9. IMPORTANT: A L.H. LOW (OPTIONAL) CONFIGURATION WILL REQUIRE A DIFFERENT BACK PANEL AND THE WASTE AND SUPPLY DIMENSIONS SHOWN (\*) MUST BE REVERSED.
  10. REFER TO JRKHO H & 28KHO H OPERATION AND MAINTENANCE INSTRUCTIONS FOR TRANSFORMER AND SENSOR SETUP.

MODEL H1011.8HO SHOWN  
MODEL H1011.8HO2 ON SHEET 2  
(ROUGH-IN DIMENSIONS APPLY TO BOTH MODELS WITH EXCEPTION NOTED ON SHEET 2)

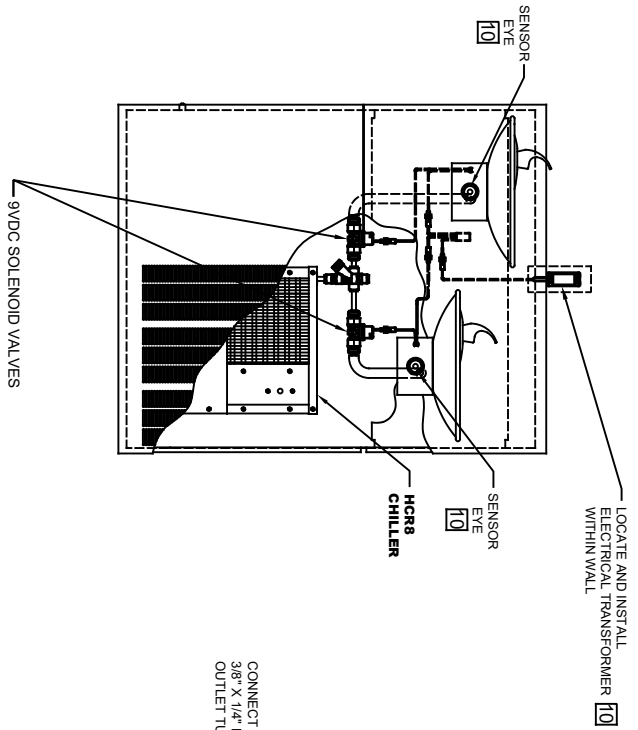
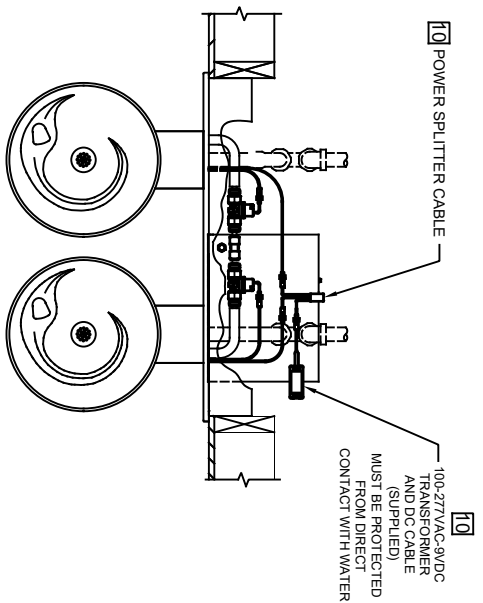


1456 KLEPPE LANE  
SPARKS, NEVADA 89431  
(775) 359-4712 FAX (775) 359-7424  
E-MAIL: HAWS@HAWS.CO.COM  
WEBSITE: WWW.HAWS.CO.COM

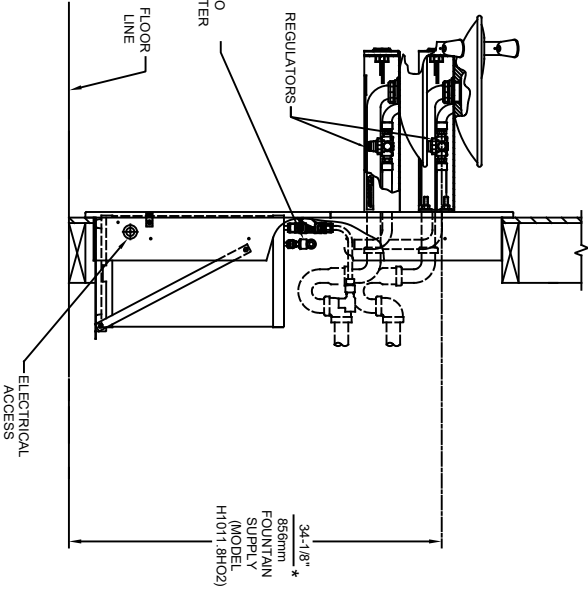
ECN NO. REVISED PERBY:	MODEL(S)
ECN: 5988	DP
DATE: 07/97	CHKD:
RTM	FV
APPROVED: RLM	DATE: 09/3/21
SCALE: NA	DRAWING TYPE:
INSTALLATION	SIZE: A
SHEET 1 OF 2	REVISION: 28

PART NUMBER  
0002080250.D

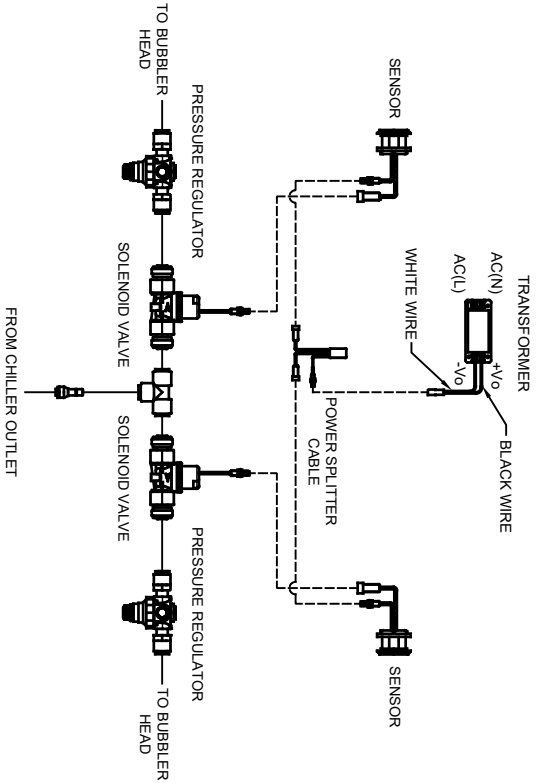
REVISION





CONNECT 3/8" PUSH-TO-CONNECT TEE TO  
3/8" X 1/4" REDUCER THEN TO 1/4" DIAMETER  
OUTLET TUBE ON HCR8 WATER CHILLER



**SENSOR WIRING / SUPPLY PLUMBING  
SCHEMATIC**



MODEL H1011.8HO2 SHOWN  
MODEL H1011.8HO ON SHEET 1  
(SEE SHEET 1 FOR APPLICABLE ROUGH-IN DIMENSIONS)

				1456 KLEPPE LANE SPARKS, NEVADA 89431 (775) 359-4712 FAX (775) 359-7424 E-MAIL: HAWS@HAWS.CO.COM WEBSITE: WWW.HAWS.CO.COM	
ECN NO. REVISED PERBY:		MODEL(S)		PART NUMBER	
DRAWN: ECN: 5988 DP		H1011.8HO/H1011.8HO2		0002080250.D	
FV: 07/22/20 FV				REVISION	
APPROVED: RLM		SCALE: NA		DRAWING TYPE: INSTALLATION	
DATE: 09/13/21		SIZE: A		SHEET 2 OF 2	