



# model H1001.8HPSHO

ADA Vandal-Resistant Chilled Motion-Activated Fountain and Bottle Filler

## FEATURES & BENEFITS

### CONSTRUCTION

Rugged ADA accessible 18 gauge Type 304 polished stainless steel swirl design bowl, 14 gauge Type 304 polished stainless steel bracket and bottle filler, and vandal-resistant bottom plates provides a long lasting unit with added peace of mind.

### BOTTLE FILLER

Vandal-resistant, 14-gauge Type 304 stainless steel bottle filler housing with touchless operation and 1 gpm (3.78 L) laminar flow.

### BUBBLER HEAD

Polished chrome-plated brass bubbler head with integral laminar flow prevents splashing while providing a superior flow pattern. The integral 11/16" dia. basin shank and stainless anti-rotation roll pin for vandal resistance strength. Shielded, angled stream opening provides a steady, sanitary source of drinking water at .45 gpm.

### FOUNTAIN VALVES

Fountain incorporates touchless sensor operated stainless steel solenoid valves controlled by a transformer for hands-free operation. A pressure regulator is used to adjust the bubbler flow according to incoming water pressures.

### VANDAL RESISTANT

The bubbler head, sensors, round bowl, drain strainer and bottom plate are locked in place, discouraging unwanted vandal tampering, and 30-second obstruction time-out to reduce tampering of sensor.

### MOUNTING

Heavy-duty 16-gauge galvanized steel mounting frame with welded-in heavy-duty 10 gauge mounting plate with pre-punched mounting holes. Further convenience is given to the chiller with the integral fold-out shelf.

## OPTIONS

- Mounting Plate: Model 6700, in-wall mounting plate for model 1920HPS.
- Mounting Plate: Model 6700R, on-wall mounting plate for model 1920HPS.
- Bottle Filler Stand: Model BTL1001, add-on stainless steel stand to place bottle on when 1920 bottle filler is used.
- Water Filter: Model 6426, 10" x 2" (25.4 x 5.1 cm), in-line lead removal element that reduces lead from incoming water supply.

For more information, visit [www.hawesco.com](http://www.hawesco.com) or call (888) 640-4297.



## REQUIRED MODELS

### H1001.8HPSHO / HCR8 / MTGFR.SM / 1920HPSHO / BP15HPS

Order these items to make up the Model H1001.8HPSHO-1920HPSHO fountain with stainless steel back panel, bottle filler with stainless steel back plate, remote chiller and fountain mounting frame shown above.

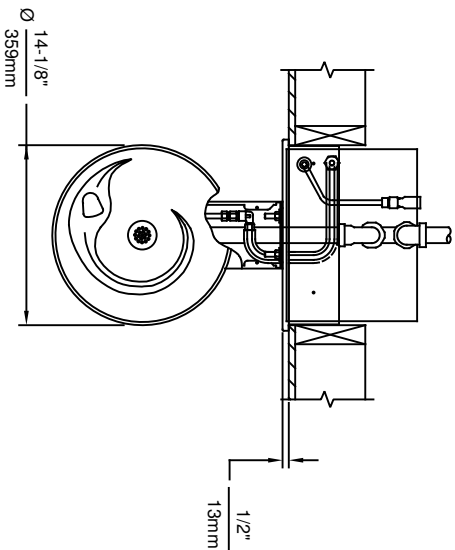
### FOR INDOOR USE ONLY

## SPECIFICATIONS

Model H1001.8HPSHO-1920HPSHO wall mounted vandal-resistant ADA motion-activated drinking fountain and bottle filler shall include an 18 gauge Type 304 polished stainless steel basin with integral swirl design, 14 gauge Type 304 polished stainless steel wall bracket and bottle filler bracket, 100% lead-free waterways, touchless sensor operated stainless steel solenoid valves with 30-second obstruction time-out controlled by a transformer, polished chrome plated brass vandal-resistant bubbler head with integral laminar anti-squirt flow, 1 gpm (3.78 L) laminar flow bottle filler, chrome plated brass vandal-resistant waste strainer, vandal resistant bottom plates, polished stainless steel back panel and louvered intrusion-proof grill, and 1-1/4" (3.2 cm) O.D. waste pipe. (P trap and stop require rear access). The R-1 34a refrigeration system is hermetically sealed and delivers a minimum of 8 gph (30.3 L) of water at 50° F (10° C) cooled from 80° F (26.7° C) inlet water at 90° F (32.2° C) ambient. 115 Volts, 60Hz, rated watts: 370, full load amps: 5. Haws electric water coolers comply with AR Standard 1010 and ANSI A117.1, and are listed by Underwriter Laboratories to U.S. and Canadian standards. Manufactured to be lead-free by all known definitions including NSF/ANSI/CAN 61-Section 9, NSF/ANSI/ CAN 372, California Proposition 65, and the Federal Safe Drinking Water Act. Product is compliant to California Health and Safety Code 116875 (AB 1953-2006), and 116876 (AB 100) "NSF/ANSI/CAN 61: Q ≤ 1".

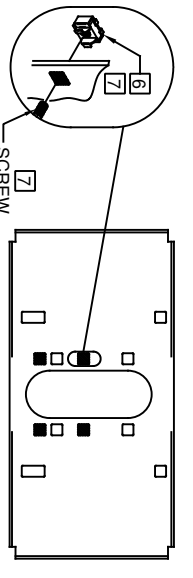
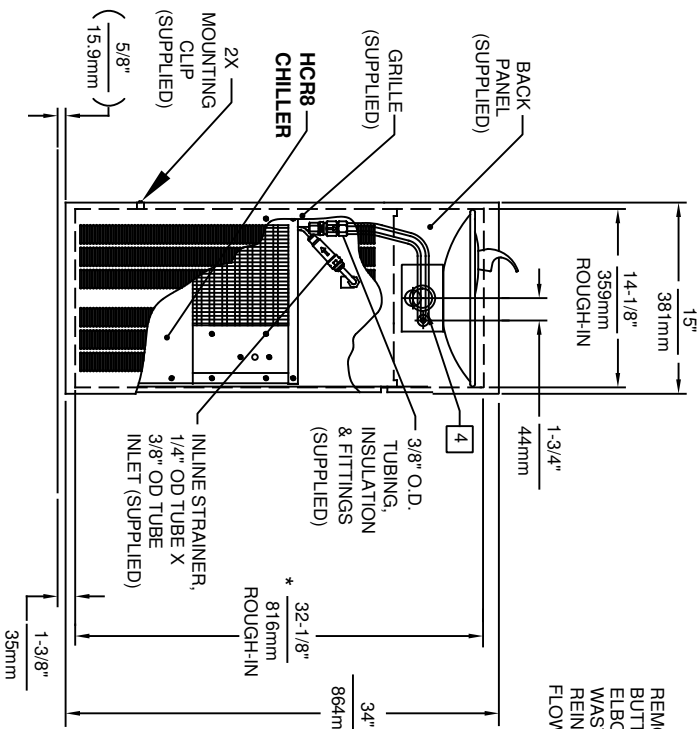
**The bottle filler requires a mounting plate; either the Haws model 6700 in-wall or the 6700R on-wall support plate.**





Available with hands off sensor  
in lieu of push button

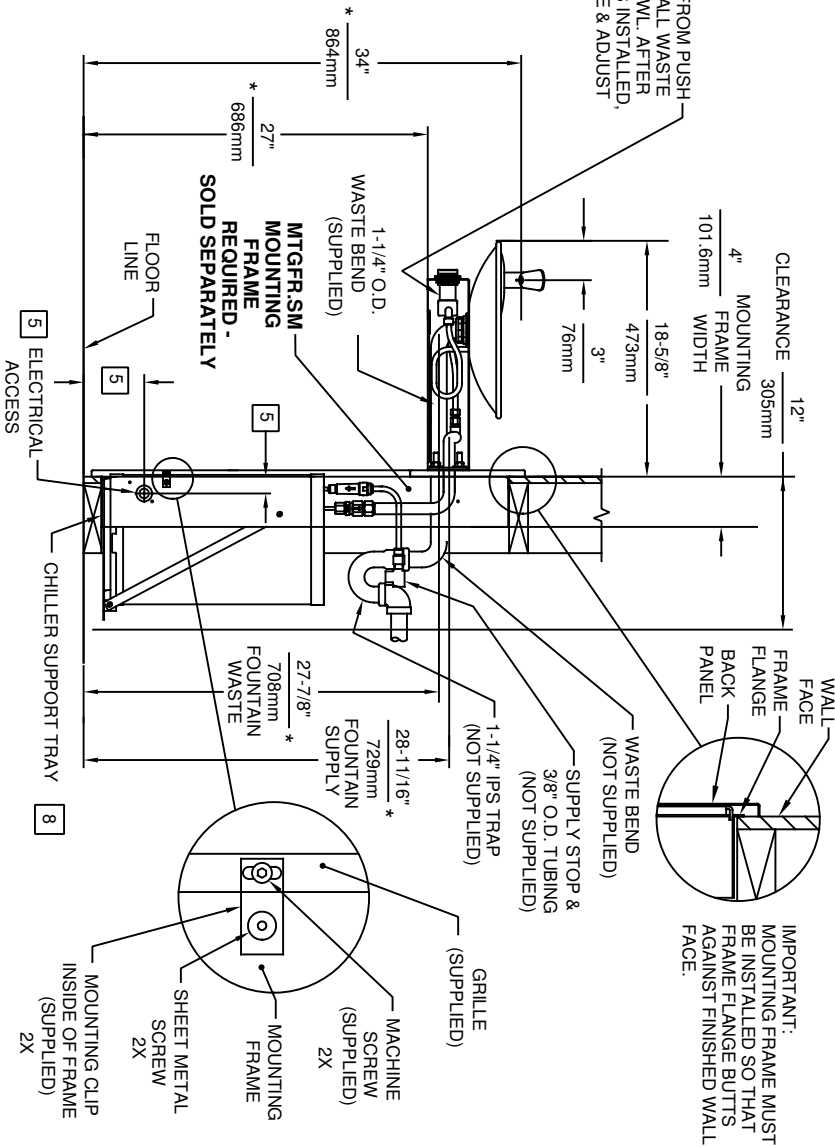
REMOVE VALVE FROM PUSH  
BUTTON TO INSTALL WASTE  
ELBOW ONTO BOWL. AFTER  
WASTE ELBOW IS INSTALLED,  
REINSTALL VALVE & ADJUST  
FLOW.




### BOWL MOUNTING PATTERN DETAIL

### NOTES:

1. HOLD ROUGH-IN DIMENSIONS  $\pm 1/8"$  (3.2mm).
2. WHEN INSTALLING THIS UNIT, LOCAL, STATE, OR FEDERAL CODES SHOULD BE ADHERED TO. FOR DIMENSIONS (LOCATIONS), WASTE AND SUPPLY REQUIREMENTS OTHER THAN SHOWN, DIMENSIONS MARKED (\*) MUST BE ADJUSTED ACCORDINGLY.
3. INSTALLER MUST PROVIDE TRAP FOR PROPER INSTALLATION.
4. REFER TO 5874SS OPERATION AND MAINTENANCE MANUAL FOR PUSH BUTTON AND VALVE INSTALLATION/MAINTENANCE INSTRUCTIONS.
5. REFER TO MTGFR-SM INSTALLATION DRAWING FOR ROUGH-IN DIMENSIONS.
6. INSERT 5/16"-18 PANEL INSERTS FROM OPPOSITE SIDE AT LOCATIONS SHOWN BY DARKENED HOLES.
7. FOUNTAIN REMOVAL: FIRST REMOVE SCREWS AND THEN SQUEEZE CLIPS ON NUT RETAINER TO POP OUT. INSTALL IS REVERSE OF REMOVAL.
8. ALIGN HOLES IN CHILLER SUPPORT TRAY WITH HOLES IN FRAME AND FASTEN WITH #10 SHEET METAL SCREWS.



**Haws**

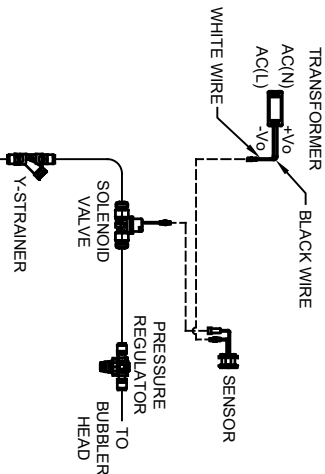
1456 KLEPPE LANE  
SPARKS, NEVADA 89431  
(775) 359-4712 FAX (775) 359-7424  
E-MAIL: HAWS@HAWSO.COM  
WEBSITE: WWW.HAWSO.COM

ECN NO. REVISED PER:BY: MODEL(S)  
DRAWN: ECN 5927 FV H1001.8/H1001.8HPS  
DATE: 07/01/97  
CHKD: DP  
RTM: DATE: 04/02/20  
APPROVED: FV  
SCALE: 1:15  
DRAWING TYPE: INSTALLATION  
SIZE: A  
SHEET 1 OF 1

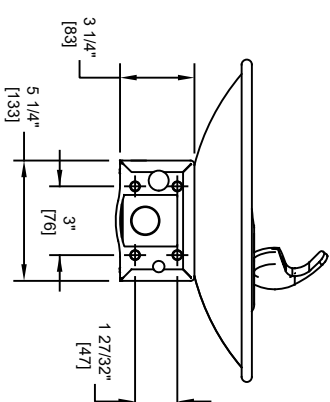
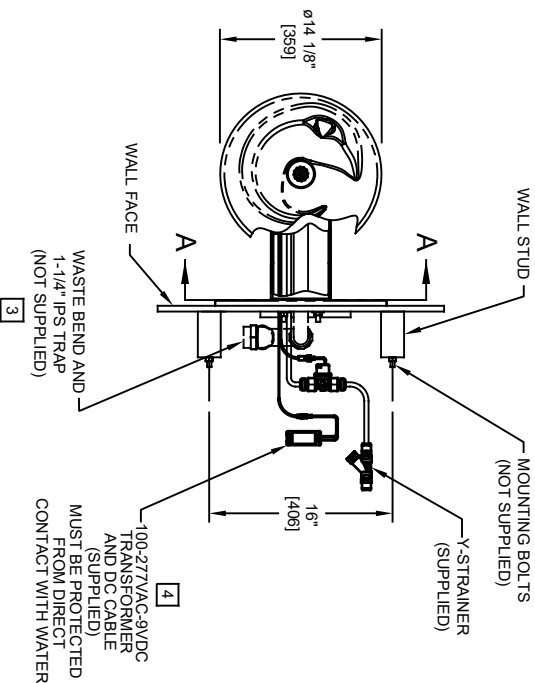
PART NUMBER  
0002080246.D  
REVISION: 20

NOTES:

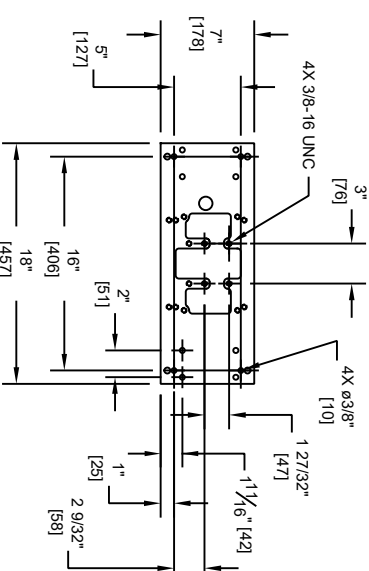
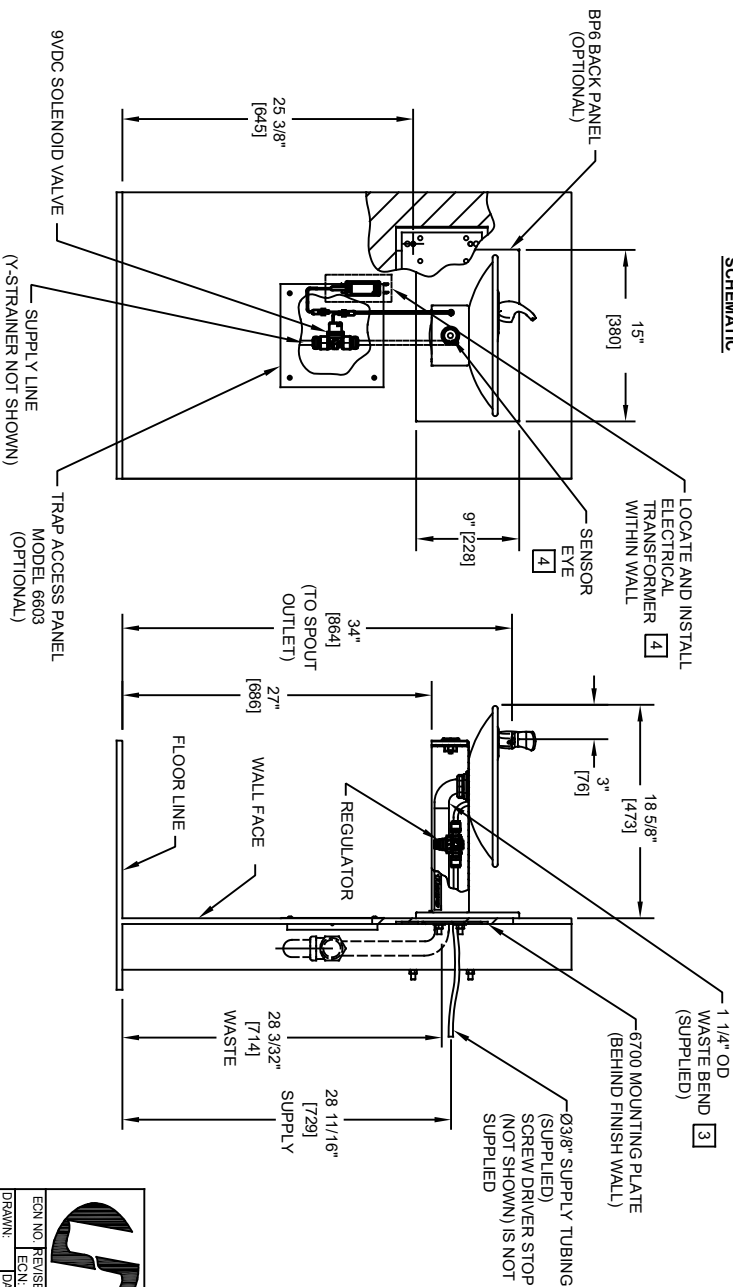
1. HOLD ROUGH-IN DIMENSIONS  $\pm 1/8"$  (3.2mm).
2. WHEN INSTALLING THIS UNIT, LOCAL, STATE, OR FEDERAL CODES SHOULD BE ADHERED TO FOR INSTALLATION DIMENSIONS (LOCATIONS), WASTE AND SUPPLY REQUIREMENTS OTHER THAN SHOWN.
3. INSTALLER MUST PROVIDE TRAP FOR PROPER INSTALLATION.
4. REFER TO 1RKHO/H OPERATION AND MAINTENANCE INSTRUCTIONS FOR TRANSFORMER AND SENSOR SETUP.





FROM SUPPLY  
Y-STRAINER  
**SENSOR WIRING / SUPPLY PLUMBING  
SCHEMATIC**



SECTION A-A  
ROTATED 90° INTO VIEW  
BRACKET MOUNTING  
DETAIL



**6700 MOUNTING PLATE**  
**MUST BE INSTALLED BEFORE FINISH WORK**  
**THIS PLATE IS REQUIRED - SOLD SEPARATELY.**

				1456 KLEPPE LANE SPARKS, NEVADA 89431 (775) 359-4712 FAX (775) 359-7424 E-MAIL: HAWS@HAWS.CO.COM WEBSITE: WWW.HAWS.CO.COM			
ECN NO.	REVISED PERBY:	MODEL(S)				1001HO	
DRAWN:	DATE:	CHKD:					
FV	09/28/21	B.M					
APPROVED:	DATE:	SCALE:	DRAWING TYPE:	INSTALLATION:	SHEET 1 OF 1		
FV	09/20/21	1:1					
		PART NUMBER		0510002020.D			
		REVISION		1			