

## FEATURES & BENEFITS

### CONSTRUCTION

Rugged ADA accessible 14 gauge Type 304 stainless steel bowls and 14 gauge Type 304 Stainless Steel bottle filler. Unit features stainless steel satin finish back panels, vandal-resistant bottom plate, and 1-1/4" integrated trap.

### BOTTLE FILLER

14-gauge Type 304 stainless steel bottle filler housing with touchless operation and 1 gpm (3.78 L) laminar flow with 30-second obstruction time-out.

### BUBBLER VALVES

Polished chrome-plated brass bubbler heads with integral 11/16" dia. basin shank and stainless anti-rotation roll pin for vandal resistance strength. Shielded, angled stream opening provides a steady, sanitary source of drinking water at .45 gpm.

### FOUNTAIN VALVES

Fountain incorporates touchless sensor operated stainless steel solenoid valves controlled by a transformer for hands-free operation. A pressure regulator is used to adjust the bubbler flow according to incoming water pressures.

### VANDLE RESISTANT

The bubbler heads, sensors, drain strainers and bottom plates are locked in place, discouraging unwanted vandal tampering, and 30-second obstruction time-out to reduce tampering of sensors.

### INTEGRATED TRAP

All-cast adjustable brass 1-1/4" NPT trap is internally mounted completely concealed within the fountain's bottom plate for easy installation and access.

## OPTIONS

- Mounting Plate: Model 6700, in-wall mounting plate for model 1920.
- Mounting Plate: Model 6700R, on-wall mounting plate for model 1920.
- Mounting Plate: Model 6700.4, in-wall mounting plate which is 36" wide by 3/16" thick solid steel that spans three studs for a heavy-duty vandal-resistant rigid installation.
- Support Frame: Model 6800 In-wall floor mounted fixture support legs, welded steel 4-bolt floor flanges, and supplied with 'U' bolts and hardware.

For more information, visit [www.hawsco.com](http://www.hawsco.com) or call (888) 640-4297.



## REQUIRED MODELS

### 1119.14H02 / 6469 / 1920HO / BP32

Order these items to make up model 1119.14H02-1920 fountain and bottle filler with stainless steel back panel shown above.

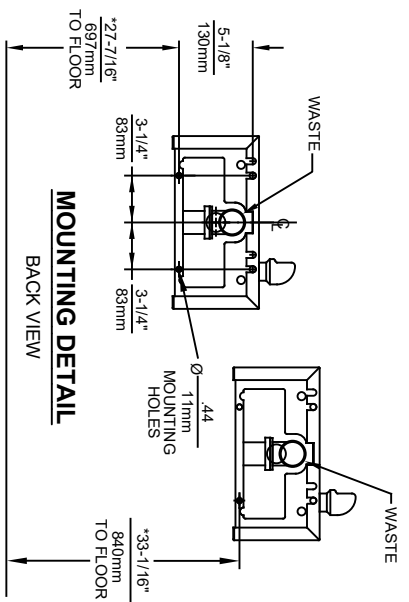
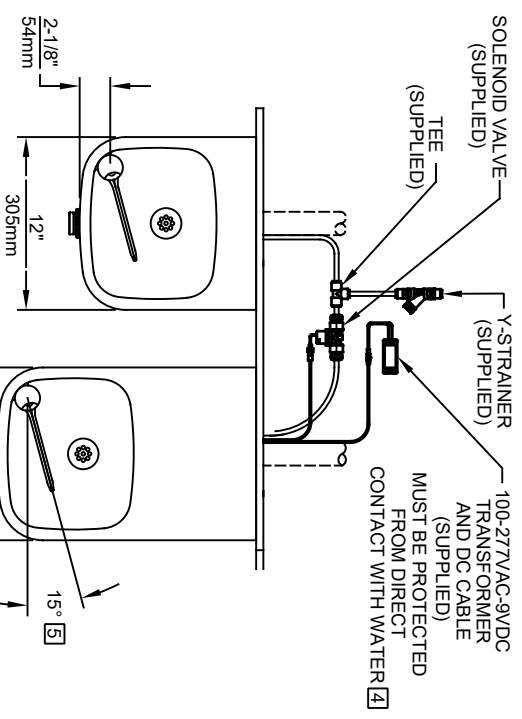
### FOR INDOOR USE ONLY

## SPECIFICATIONS

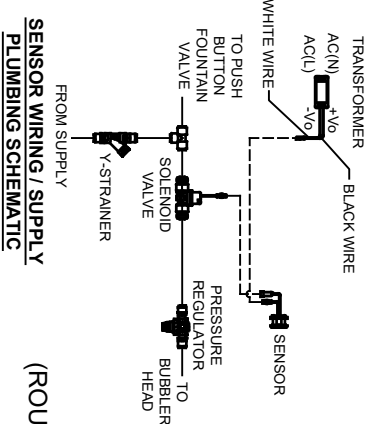
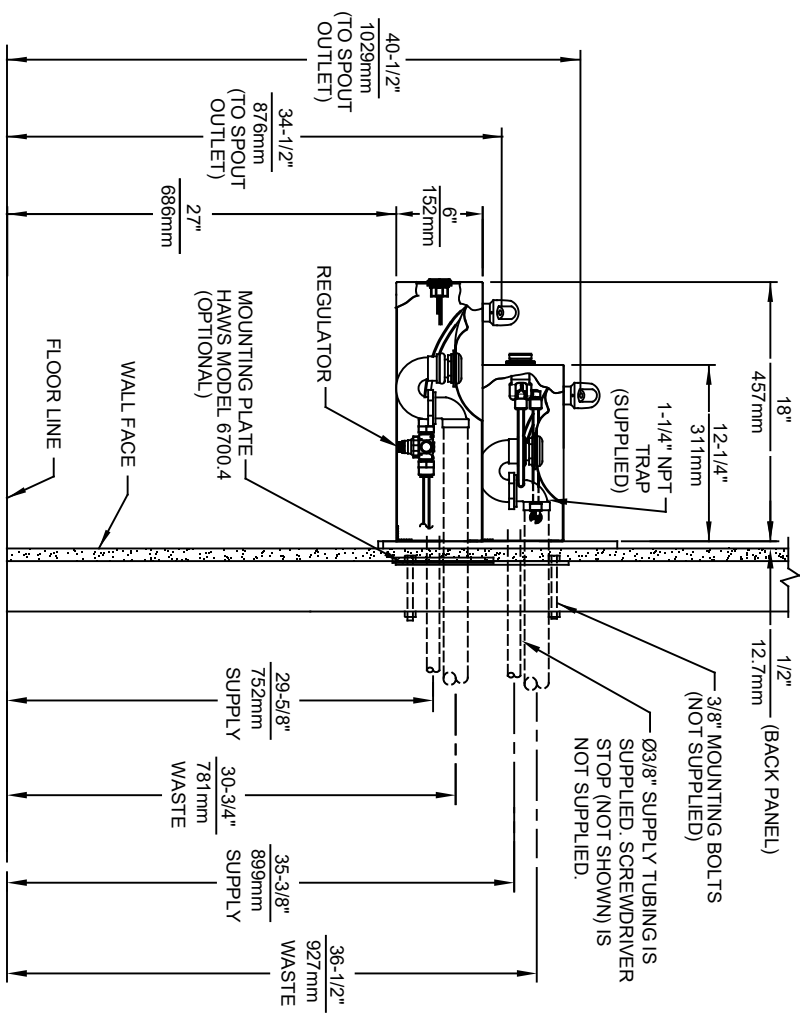
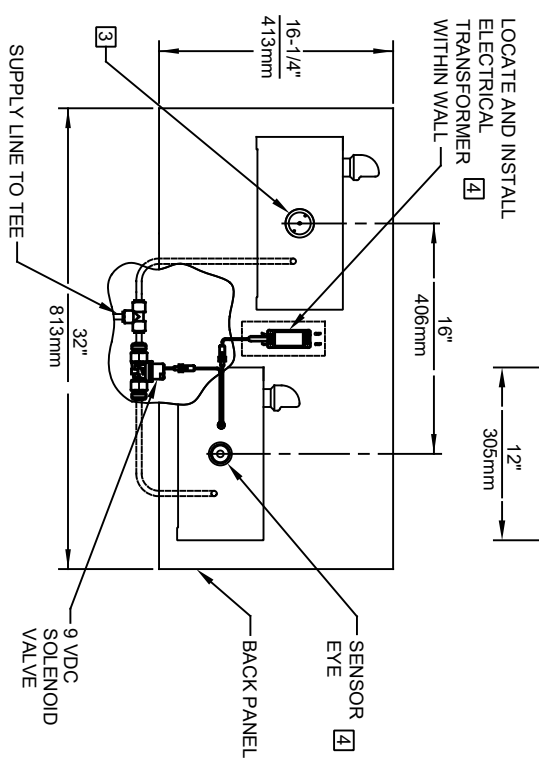
Model 1119.14H02-1920HO wall mounted vandal-resistant ADA motion activated drinking fountain and bottle filler shall include dual 14 gauge Type 304 Stainless Steel satin finish basins, 14 gauge bottle filler bracket, touchless sensor operated stainless steel solenoid valves with 30-second obstruction time-out controlled by a transformer, polished chrome-plated brass vandal-resistant bubblerheads, 1 gpm (3.78 L) laminar flow bottle filler, polished chrome-plated brass vandal-resistant waste strainers, vandal-resistant bottom plates, stainless steel satin finish back panels, high and low fountain mounting levels, and 1-1/4" NPT traps. Manufactured to be lead-free by all known definitions including NSF/ANSI/CAN 61-Section 9, NSF/ANSI/CAN 372, California Proposition 65, and the Federal Safe Drinking Water Act. Product is compliant to California Health and Safety Code 116875 (AB 1953-2006), and 116876 (AB 100) "NSF/ANSI/CAN 61: Q ≤ 1".

**The bottle filler requires a mounting plate; either the Haws model 6700 in-wall or the 6700R on-wall support plate.**







- NOTES:
1. HOLD ROUGH-IN DIMENSIONS  $\pm 1/4"$  (6.4mm).
  2. WHEN INSTALLING THIS UNIT, LOCAL, STATE, OR FEDERAL CODES SHOULD BE ADHERED TO. FOR INSTALLATION HEIGHTS OTHER THAN SHOWN, DIMENSIONS MARKED (\*) MUST BE ADJUSTED ACCORDINGLY.
  3. REFER TO 5874 SERIES/VRK5874 OPERATION AND MAINTENANCE MANUAL FOR PUSH BUTTON AND VALVE INSTALLATION AND MAINTENANCE INSTRUCTIONS.
  4. REFER TO 1RKHO OR 2RKHO SERIES OPERATION INSTRUCTIONS FOR TRANSFORMER AND SENSOR SETUP.
  5. MAXIMUM ADJUSTABLE RANGE IS 15° FROM PARALLEL TO BACK OF WALL.



MODEL 1119, 14HO SHOWN  
MODEL 1119, 14HO2 ON SHEET 2  
(ROUGH-IN DIMENSIONS APPLY TO BOTH MODELS)



1456 KLEPPE LANE  
SPARKS, NEVADA 89431  
(775) 359-4712 FAX (775) 359-7424  
E-MAIL: HAWES@HAWSCO.COM  
WEBSITE: WWW.HAWSCO.COM

ECN NO. REVISED PERBY:	MODEL(S)
5693	1119, 14HO/1119, 14HO2
DRAWN: DATE: CHKD:	
DP: 05/10/21 BJM	
APPROVED: DATE:	
FV: 11/1/22	
SCALE: 1:14	DRAWING TYPE:
INSTALLATION	
SHEET: 1 OF 2	

PART NUMBER  
0510001203.D

REVISION  
2

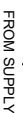


-POWER SPLITTER CABLE

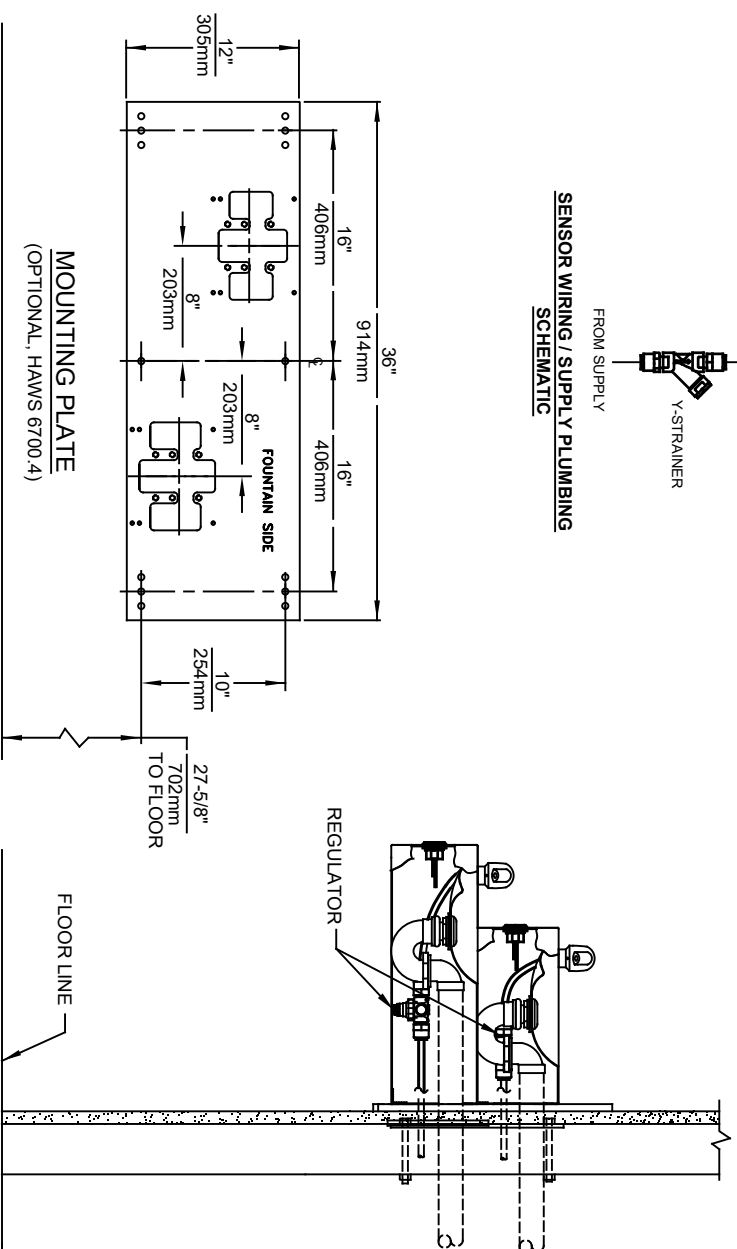
- BACK PANEL

4

4 9 VDC SOLENOID VALVES



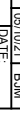
MEM



FLOOR LINE

REGULATOR —

MODEL 1119.14HO2 SHOWN  
MODEL 1119.14HO ON SHEET 1  
(SEE SHEET 1 FOR APPLICABLE ROUGH-IN DIMENSIONS)

		1455 KLEPPLE LANE SPARKS, NEVADA 89431 (775) 359-4712 FAX (775) 359-7424 E-MAIL: HAWSCO.COM WEBSITE: WWW.HAWSCO.COM	
ECN NO. REVISED PERMY: 5693 ECN 5741 FV DRAWN: DATE: CHKD: DP 05/01/21 BJM APPROVED: DATE: 11/1/21		MODEL(S)  1119, 14HO/1119, 14HO2	
SCALE: 1:14 DRAWING TYPE:		INSTALLATION:	
SIZE: A SHEET 2 OF 2		REVISION 0510001203.D	