

## FEATURES & BENEFITS

### CONSTRUCTION

One-piece drinking fountains with low-profile design made of 14 gauge Type 304 stainless steel with 1/4" (.6 cm) thick stainless back plates welded in, and vandal resistant stainless bottom plates.

### BOTTLE FILLER

Vandal-resistant, 14-gauge Type 304 stainless steel bottle filler housing with touchless operation and 1 gpm (3.78 L) laminar flow.

### BUBBLER HEAD

Polished chrome-plated brass bubbler head with integral 11/16" dia. basin shank and stainless anti-rotation roll pin for vandal resistance strength. Shielded, angled stream opening provides a steady, sanitary source of drinking water at .45 gpm.

### VANDAL RESISTANT

The bubbler heads, sensors, drain strainers and bottom plates are locked in place, discouraging unwanted vandal tampering, and 30-second obstruction time-out to reduce tampering of sensors.

### INTEGRATED TRAP

All cast brass 1-1/4" NPT adjustable traps completely concealed inside bottom plates for easy installation and lack of unwanted access.

## OPTIONS

- Mounting Plate: Model 6700, in-wall mounting plate for model 1920HO.
- Mounting Plate: Model 6700R, on-wall mounting plate for model 1920HO.
- Support Frame: Model 6800 In-wall floor mounted fixture support legs, welded steel 4-bolt floor flanges, and supplied with 'U' bolts and hardware.
- Bottle Filler Stand: Model BTL1001, add-on stainless steel stand to place bottle on when 1920 bottle filler is used.

For more information, visit [www.hawscow.com](http://www.hawscow.com) or call (888) 640-4297.



## REQUIRED MODELS

### 1117LH02 / 6717 / 1920HO / BP32

Order these items to make up Model 1117LH02-1920HO dual stainless steel touchless fountain and bottle filler, and stainless steel back panels shown above.

### FOR INDOOR USE ONLY

## SPECIFICATIONS

Model 1117LH02-1920HO low profile wall mounted vandal-resistant ADA motion-activated drinking fountain and bottle filler shall include dual 14 gauge Type 304 Stainless Steel satin finish basins with integral 1/4" (.6 cm) thick stainless steel back plates, touchless sensor operated stainless steel solenoid valves with 30-second obstruction time-out controlled by a transformer, in-line strainer and flow adjustment provide 100% lead free waterways, polished chrome plated brass vandal-resistant bubbler heads, 1 gpm (3.78 L) laminar flow bottle filler, polished chrome-plated brass vandal-resistant waste strainers, vandal-resistant bottom plates, adjustable mounting allowing either basin to be high or low, stainless steel satin finish back panels, and 1-1/4" NPT concealed all cast-brass traps. The patented design allows the unit to be mounted to meet ADA or Child ADA specifications. CSA certified lead-free to NSF/ANSI/CAN 61-Section 9, NSF/ANSI/CAN 372, California Proposition 65, and the Federal Safe Drinking Water Act. Product is compliant to California Health and Safety Code 116875 (AB 1953-2006), and 116876 (AB 100) "NSF/ANSI/CAN 61: Q ≤ 1".

**The bottle filler requires a mounting plate; either the Haws model 6700 in-wall or the 6700R on-wall support plate.**



NOTES:

1. HOLD ROUGH-IN DIMENSIONS  $\pm \frac{1}{8}$ " (3.2MM).
2. WHEN INSTALLING THIS UNIT, LOCAL, STATE, OR FEDERAL CODES SHOULD BE ADHERED TO. FOR INSTALLATION HEIGHTS OTHER THAN SHOWN, DIMENSIONS MARKED (\*) MUST BE ADJUSTED ACCORDINGLY.
3. REFER TO 6874 SERIES OPERATION AND MAINTENANCE MANUAL FOR PUSH BUTTON AND VALVE INSTALLATION/MAINTENANCE INSTRUCTIONS.
4. ROUGH IN DIMENSIONS FOR FOUNTAIN HEIGHTS:

CHILD WHEELCHAIR HEIGHT: SEE SHT 3 FIG 1

WASTE: 26-1/4" (667mm)  
 SUPPLY: 26-1/8" (664mm)  
 MOUNTING HOLE: 24-13/16" (630mm)  
 FOUNTAIN: 24" (610mm)  
 BUBBLER: 29-7/8" (759mm)

ADULT WHEELCHAIR HEIGHT: SEE SHT 3 FIG 2

WASTE: 29-1/4" (743mm)  
 SUPPLY: 29-1/8" (740mm)  
 MOUNTING HOLE: 27-13/16" (709mm)  
 FOUNTAIN: 27" (686mm)  
 BUBBLER: 32-7/8" (832mm)

STANDING ADULT HEIGHT: SEE SHT 3 FIG 3

WASTE: 34-3/4" (883mm)  
 SUPPLY: 34-3/8" (879mm)  
 MOUNTING HOLE: 33-5/16" (846mm)  
 FOUNTAIN: 32-1/5" (826mm)  
 BUBBLER: 38-3/8" (972mm)

5. REFER TO MODEL 1117LHO INSTALLATION DRAWING SHEET 3 OF 3 (ON HAWS WEBSITE WWW.HAWS.CO.COM) FOR PERMISSIBLE BOWL MOUNTING PATTERNS. TWO WHEELCHAIR HEIGHT FOUNTAINS CANNOT BE MOUNTED SIDE BY SIDE PER ANSI A117.1.

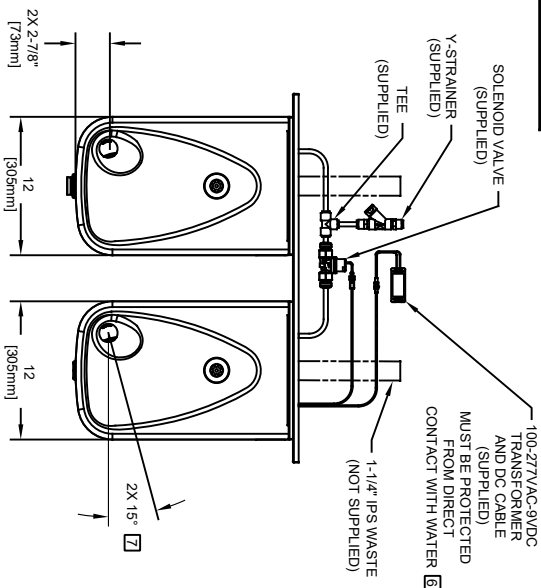
6. REFER TO 1RKH0 OR 2RKH0 SERIES OPERATION INSTRUCTIONS FOR TRANSFORMER AND SENSOR SETUP.

7. MAXIMUM ADJUSTABLE RANGE IS 15" FROM PARALLEL TO BACK WALL.

NOTES CONTINUED ON SHEET 3 OF 3

3/8" O.D. SUPPLY TUBING IS SUPPLIED. SCREWDRIVER STOP (NOT SHOWN) IS NOT SUPPLIED.

3/8" O.D. SUPPLY LINE TO TEE

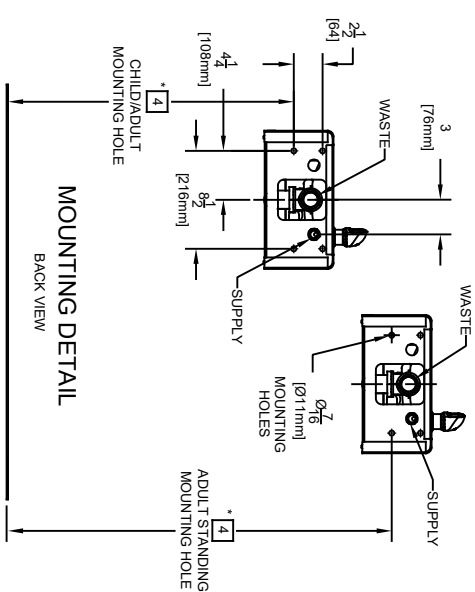
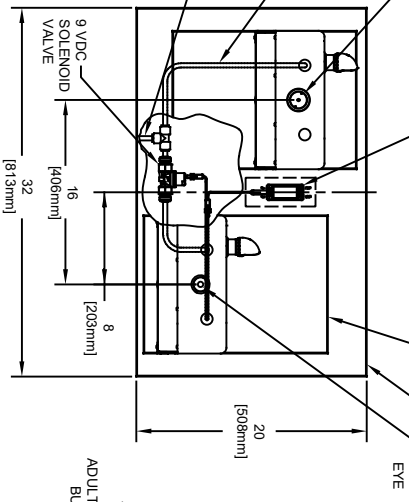


LOCATE AND INSTALL ELECTRICAL TRANSFORMER WITHIN WALL

2X SMALL BACK PANEL (SUPPLIED)

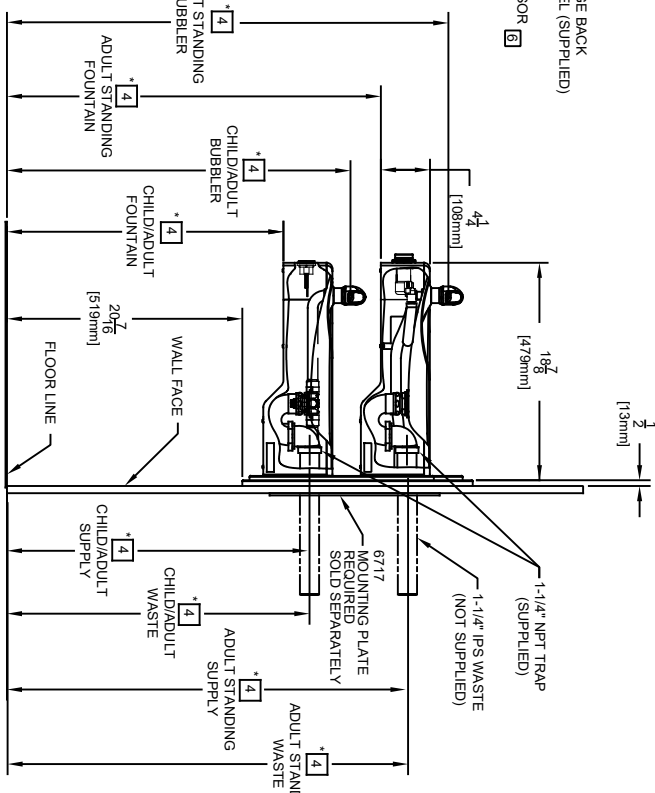
LARGE BACK PANEL (SUPPLIED)

SENSOR EYE



MOUNTING DETAIL

BACK VIEW



MODEL 1117LHO SHOWN

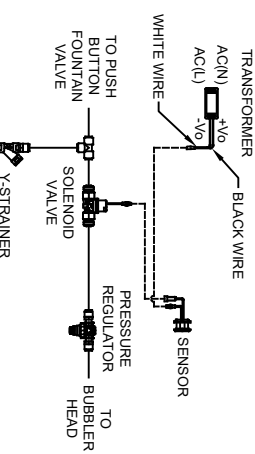
MODEL 1117LHO2 ON SHEET 2

(ROUGH-IN DIMENSIONS APPLY TO BOTH MODELS)

6717 MOUNTING PLATE

MUST BE INSTALLED BEFORE FINISH WORK  
 THIS PLATE IS REQUIRED - SOLD SEPARATELY.

2x 3/16\"/>



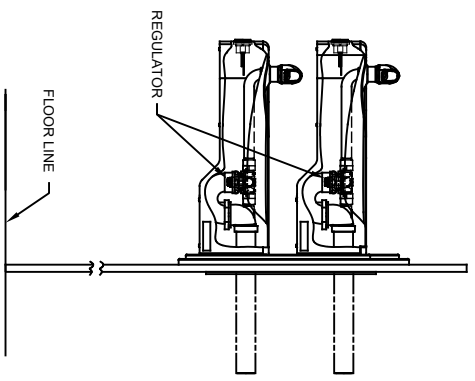
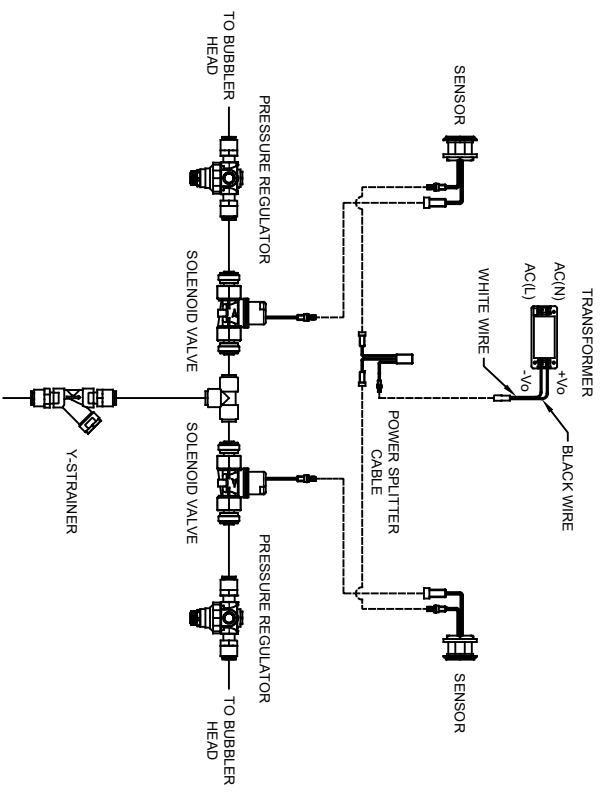
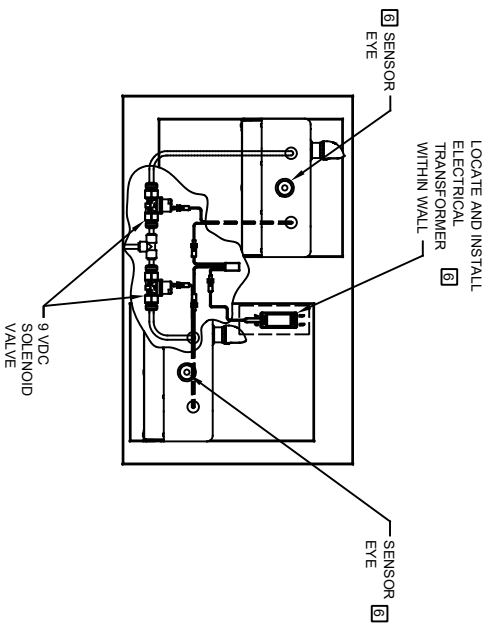
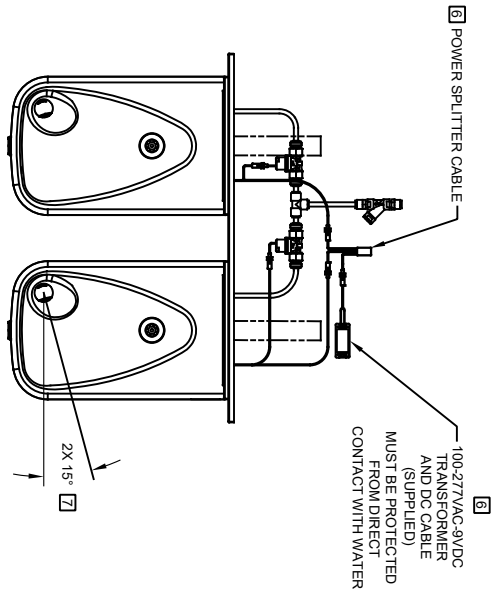
SENSOR WIRING / SUPPLY PLUMBING SCHEMATIC

1456 KLEPPE LANE  
 SPARKS, NEVADA, 89431  
 (775) 359-4712 FAX (775) 359-7424  
 E-MAIL: HAWS@HAWS.CO.COM  
 WEBSITE: WWW.HAWS.CO.COM

MODEL(S)  
 1117LHO/117LHO2

ECN NO. REVISED PER BY: MODEL(S)  
 5712 ECN: 5712 FV:  
 DRAWN: DATE: CHKD:  
 FV: 07/21/21 DP  
 APPROVED: DATE: SCALE: 1:2 DRAWING TYPE: INSTALLATION SIZE: A SHEET 1 OF 3

PART NUMBER: 0510001209.D  
 REVISION: 1



MODEL 1117LHO2 SHOWN  
MODEL 1117LHO ON SHEET 1  
(SEE SHEET 1 FOR APPLICABLE ROUGH-IN DIMENSIONS)

**Haws**

1459 KLEPPE LANE  
SPARKS, NEVADA, 89431  
(775) 359-4712 FAX (775) 359-7424  
E-MAIL: HAWS@HAWSCO.COM  
WEBSITE: WWW.HAWSCO.COM

ECN NO. REVISED PER BY: MODEL(S)  
5712 ECN: 5712 FV: 1117LHO/1117LHO2

DATE: 07/21/21  
CHKD: DP

APPROVED: FV DATE: 07/29/21 SCALE: 1/2 DRAWING TYPE: INSTALLATION SIZE: A SHEET 2 OF 3

PART NUMBER: 0510001209.D  
REVISION: 1

**NOTES:**

- 8 FIGURES 1 AND 2 ARE REVERSIBLE. CAN BE RIGHT OR LEFT SIDE HIGH.
- 9 USE SHADED HOLES TO MOUNT AT INDICATED POSITIONS BASED ON COMBINATION SELECTED (FIGS. 1 THRU 3).
- 10. REFER TO SHEET 1 OF 3, NOTE 4, FOR INSTALLED FOUNTAIN DIMENSIONS.

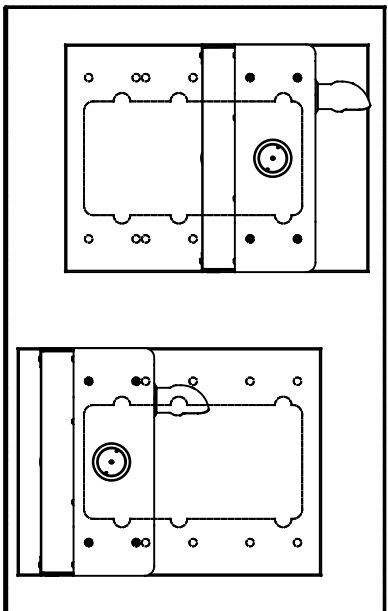


FIGURE 1.  
ADULT STANDING/CHILD WHEELCHAIR

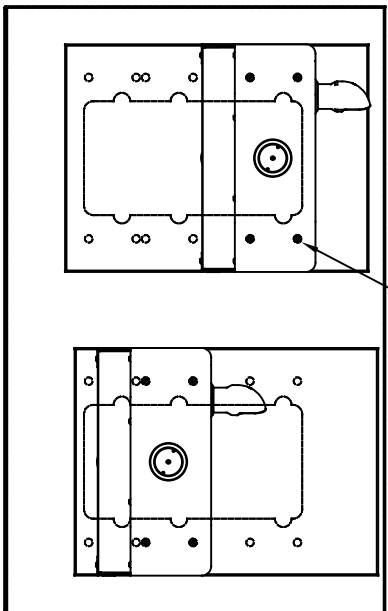


FIGURE 2.  
ADULT STANDING/ADULT WHEELCHAIR

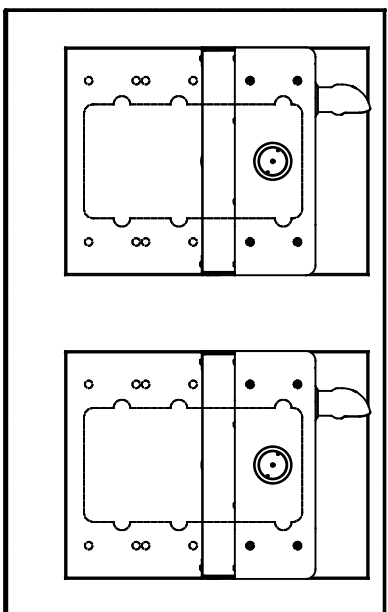


FIGURE 3.  
ADULT STANDING/ADULT STANDING

# BOWL MOUNTING PATTERNS



**Haws**

1459 KLEPPE LANE  
SPARKS, NEVADA 89431  
(775) 359-4712 FAX (775) 359-7424  
E-MAIL: HAWS@HAWSCO.COM  
WEBSITE: WWW.HAWSCO.COM

ECN NO. REVISED PER BY:	MODEL(S)	PART NUMBER
5712		0510001209.D
DATE:	DATE:	REVISION:
07/21/21	07/21/21	1
APPROVED:	SCALE:	SIZE:
FV	1:2	A
	DRAWING TYPE:	SHEET 3 OF 3
	INSTALLATION:	