





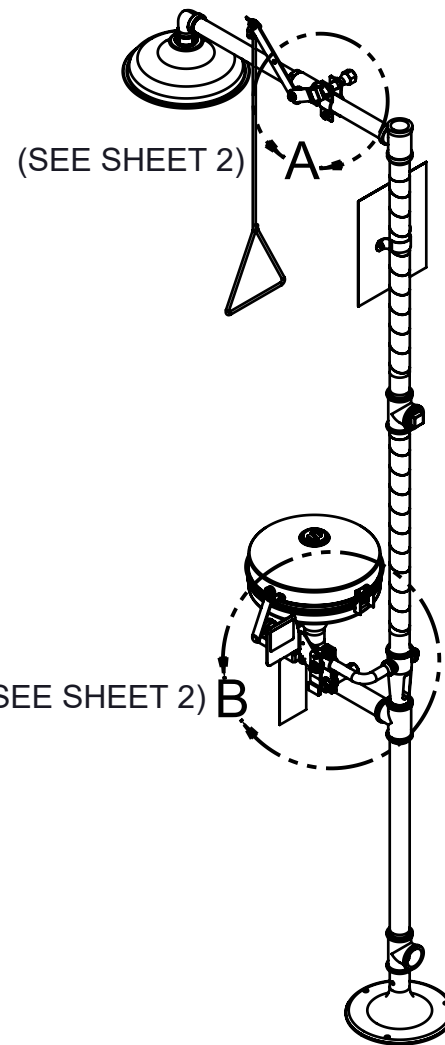
NOTES:

1. APPLY SMALL AMOUNT OF THREAD LOCKER (LOCTITE #222MS - SUPPLIED) TO MALE THREADS, WHERE INDICATED.
 2. APPLY SMALL AMOUNT OF LUBRICANT (DOW CORNING #111 - SUPPLIED) TO PROXIMITY SWITCH (ITEM 1) THREADS, PRIOR TO INSTALLATION (PREVENTS THREAD SEIZING).
 3. THESE PROXIMITY SWITCHES ARE QPS CERTIFIED AS ACCESSORIES FOR USE IN HAWS MANUFACTURED ASSEMBLIES.
- 



4. PROXIMITY SWITCH INSTALLATION LOCATIONS:
 - SINGLE PROXIMITY SWITCH MODELS SP152S AND SP152D CAN BE INSTALLED AT EITHER:
 - A) A SHOWER HEAD ONLY (SEE SHEET 2 OF 5, DETAIL A), OR
 - B) AN EYE/FACE WASH ONLY (SEE SHEET 2 OF 5, DETAIL B AND SHEET 3 OF 5)
 - DOUBLE PROXIMITY SWITCH MODELS SP152SC AND SP152DC CAN BE INSTALLED AT:
 - A) BOTH A SHOWER HEAD AND EYE/FACE WASH ON COMBINATION SAFETY SHOWER UNITS (SEE SHEET 2 OF 5, DETAILS A AND B AND SHEET 3 OF 5).
 5. PROXIMITY SWITCH KIT BRACKETS WILL FIT 1/2" - 1" IPS PIPE SIZES. SEE HAWS MODEL COMPATIBILITY TABLE ON PAGE 3 OF HAWS SP152 SERIES OPERATION AND MAINTENANCE MANUAL, FOR MODELS THAT THESE KITS WILL FIT ON.

PARTS BREAKDOWN

MODEL NUMBER		SP152S	SP152D	SP152SC	SP152DC
ITEM NO.	DESCRIPTION	QTY.	QTY.	QTY.	QTY.
1	PROXIMITY SWITCH, SPDT	1	--	2	--
	PROXIMTY SWITCH, DPDT	--	1	--	2
2	STRAP, PROXIMITY SWITCH	2	2	4	4
3	WASHER, FLAT, 1/4	2	2	4	4
4	NUT, 1/4-20	1	1	2	2
5	SCREW, 1/4-20 X 1-1/4	1	1	2	2
6	JAM NUT, 5/8-18, PROXIMITY SWITCH	2	2	4	4
7	MAGNET, PROXIMITY SWITCH	1	1	2	2
8	NUT, 3/8-24	1	1	1	1
9	WASHER, FLAT, 3/8	2	2	2	2
10	SCREW, 3/8-24 X 1 W/HOLE	1	1	1	1
N/A	LOCTITE THREAD LOCKER 222MS (0003244389)	1	1	1	1
N/A	DOW CORNING LUBRICANT #111 (0003247000)	1	1	1	1

SEE SHEET 4 OF 5 FOR ELECTRICAL WIRING OF PROXIMITY SWITCH(ES)



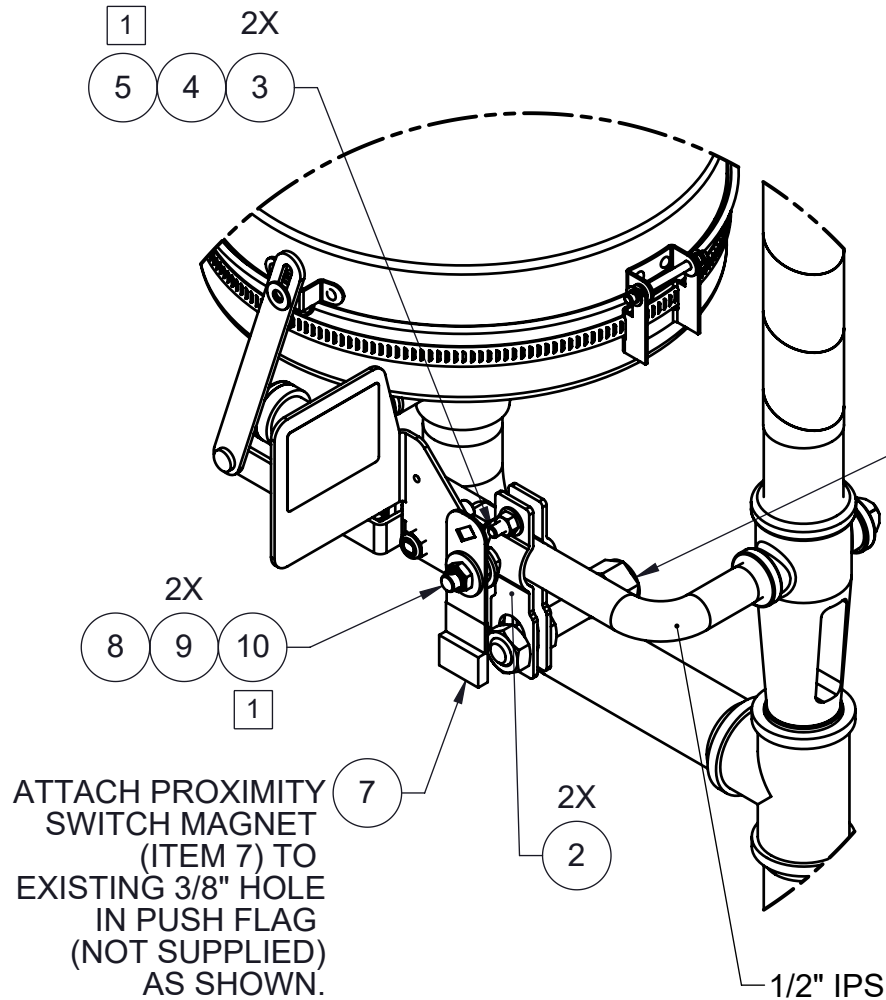
**HAWS 8300-8309
SHOWN FOR REFERENCE
(NOT SUPPLIED)**



Haws®
Since 1906

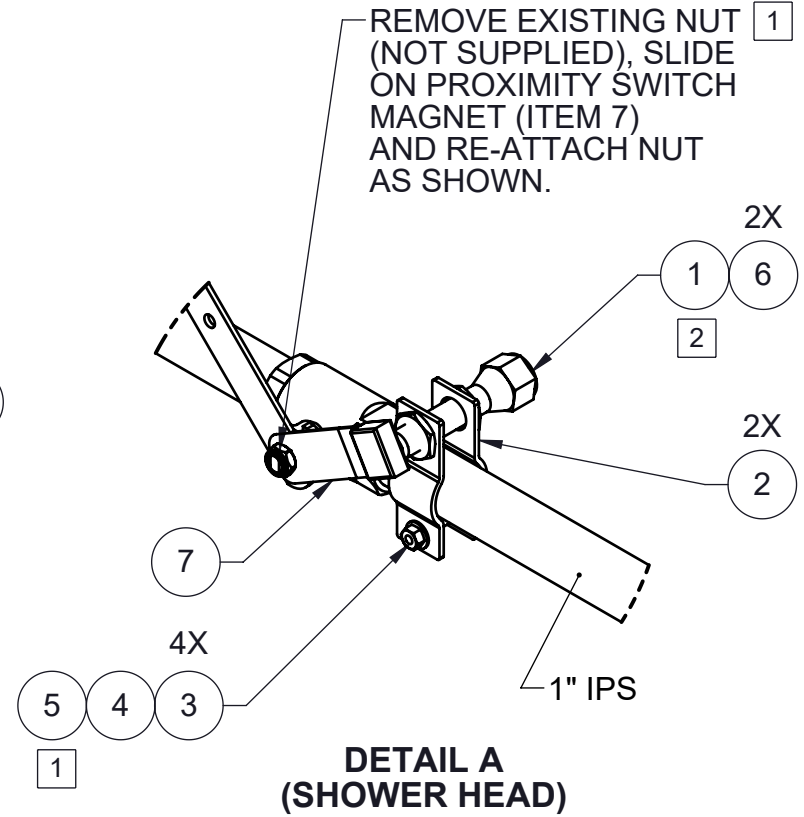
1455 KLEPPE LANE
SPARKS, NEVADA 89431
(775) 359-4712 FAX (775) 359-7424
E-MAIL: HAWS@HAWS.CO.COM
WEBSITE: WWW.HAWS.CO.COM

ECN: 5551	REV. ECN: 5973	BY: FV	MODEL(S)	PART NUMBER
DRAWN: LF	DATE: 07/30/20	CHKD: KM	SP152S/SP152D/SP152SC/SP152DC/SP155PS	0510001049.D
APPROVED: FV	DATE: 11/03/23	SCALE: 1:16	DRAWING TYPE: INSTALLATION	REVISION: 4
			SIZE: A	SHEET 1 OF 5



**DETAIL B
(EYE/FACE WASH)**

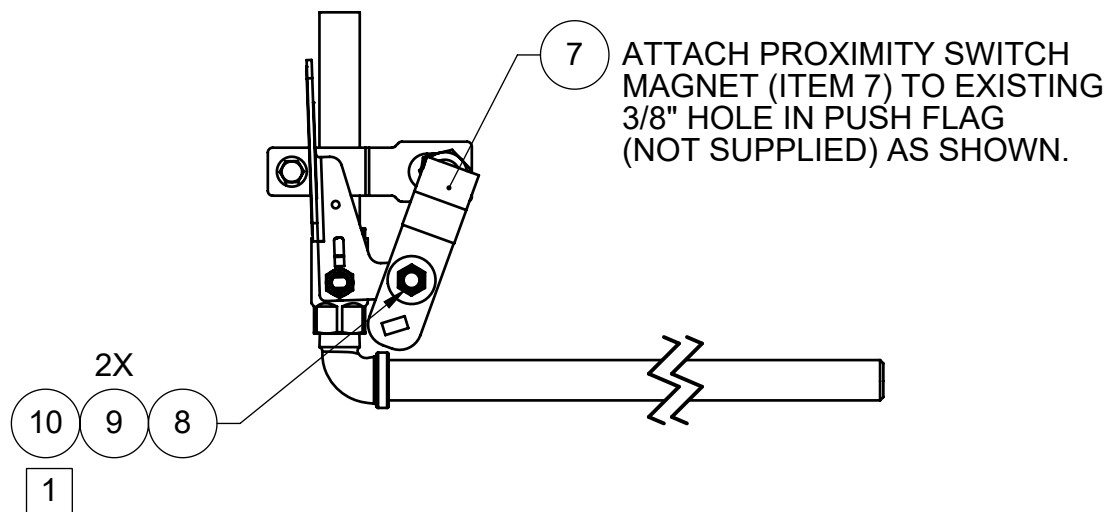
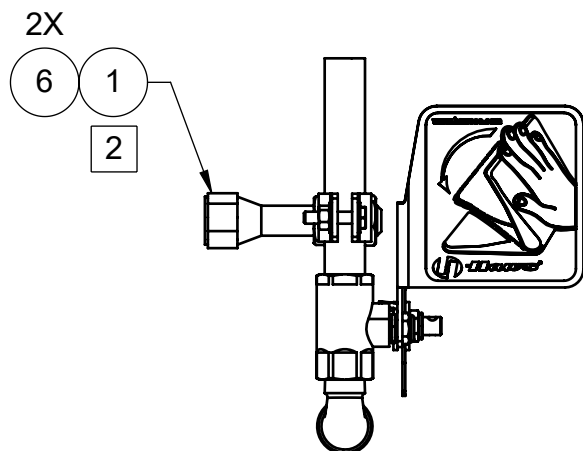
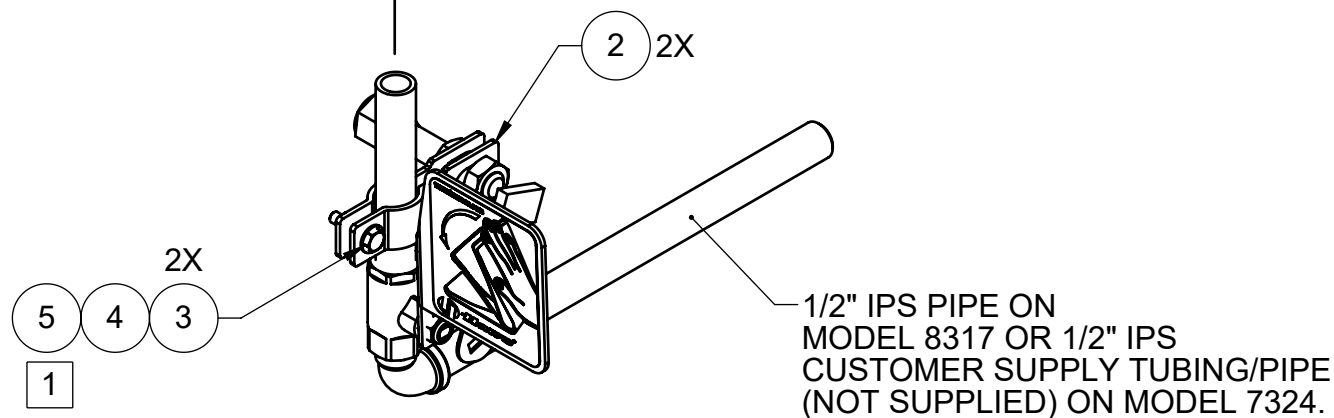
SEE SHEET 3 OF 5 (PAGE 6) FOR VERTICAL ORIENTATION OF PROXIMITY SWITCH ON EYE/FACE WASH FOR MODELS 7324 OR 8317.



**PROXIMITY SWITCH LOCATION DETAILS
(SWITCHES ARE SHOWN ON A COMBO SHOWER FOR REFERENCE. CERTAIN SHOWER/EYEWASH MODELS MAY REQUIRE THAT THE BRACKETS BE MOUNTED TO CUSTOMER SUPPLY PIPING)**

 Haws® Since 1906		1455 KLEPPE LANE SPARKS, NEVADA 89431 (775) 359-4712 FAX (775) 359-7424 E-MAIL: HAWS@HAWS.CO.COM WEBSITE: WWW.HAWS.CO.COM	
		MODEL(S) SP152S/SP152D/SP152SC/SP152DC/SP155PS	
ECN: 5551	REV. ECN: 5973	BY: FV	PART NUMBER 0510001049.D
DRAWN: LF	DATE: 07/30/20	CHKD: KM	REVISION 4
APPROVED: FV	DATE: 11/03/23	SCALE: 1:20	DRAWING TYPE: INSTALLATION
		SIZE: A	SHEET 2 OF 5

TO
EYE/FACE WASH



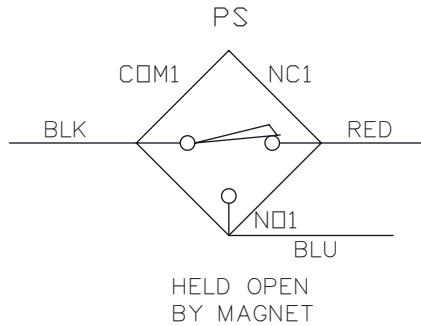
**VERTICAL ORIENTATION
OF PROXIMITY SWITCH ON EYE/FACE WASH
FOR MODELS 7324 OR 8317 SHOWN.
SEE PREVIOUS SHEET (2 OF 5) FOR ALL OTHER INSTALLATIONS.**

 Haws® Since 1906		1455 KLEPPE LANE SPARKS, NEVADA 89431 (775) 359-4712 FAX (775) 359-7424 E-MAIL: HAWS@HAWS.CO.COM WEBSITE: WWW.HAWS.CO.COM	
		ECN: 5551 REV. ECN: 5973 BY: FV DRAWN: LF DATE: 07/30/20 CHKD: KM APPROVED: FV DATE: 11/03/23	
MODEL(S) SP152S/SP152D/SP152SC/SP152DC/SP155PS		PART NUMBER 0510001049.D REVISION 4	
SCALE: 1/4" = 1" DRAWING TYPE: INSTALLATION		SIZE: A SHEET 3 OF 5	

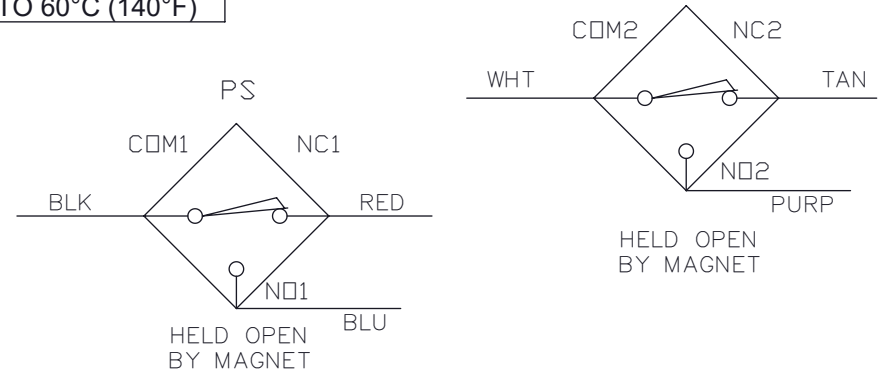
ALL ELECTRICAL WORK TO BE DONE PER LOCAL CODE

PROXIMITY SWITCHES ARE RATED TO 3 AMPS DC,
VOLTAGE 0-120 VAC or 0-28 VDC, 100VA
AMBIENT TEMPERATURE -40°C (-40°F) TO 60°C (140°F)

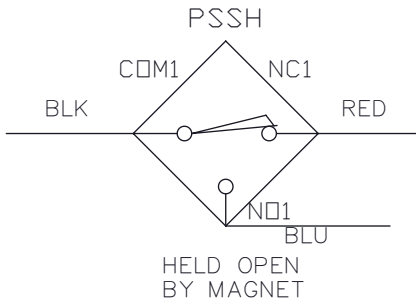
SP152S



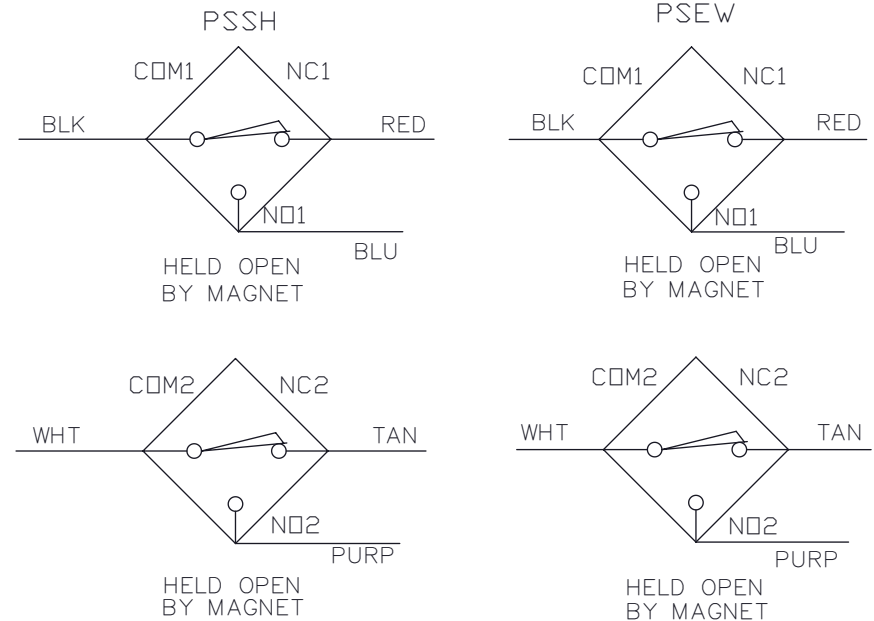
SP152D



SP152SC



SP152DC



ELECTRICAL WIRING OF PROXIMITY SWITCH(ES)

LEGEND:

BLK - BLACK
BLU - BLU
COM - COMMON
PS - PROXIMITY SWITCH
PSSH - PROXIMITY SWITCH, SHOWER
PSEW - PROXIMITY SWITCH, EYEWASH
PURP - PURPLE
NO - NORMALLY OPEN
NC - NORMALLY CLOSED
WHT - WHITE



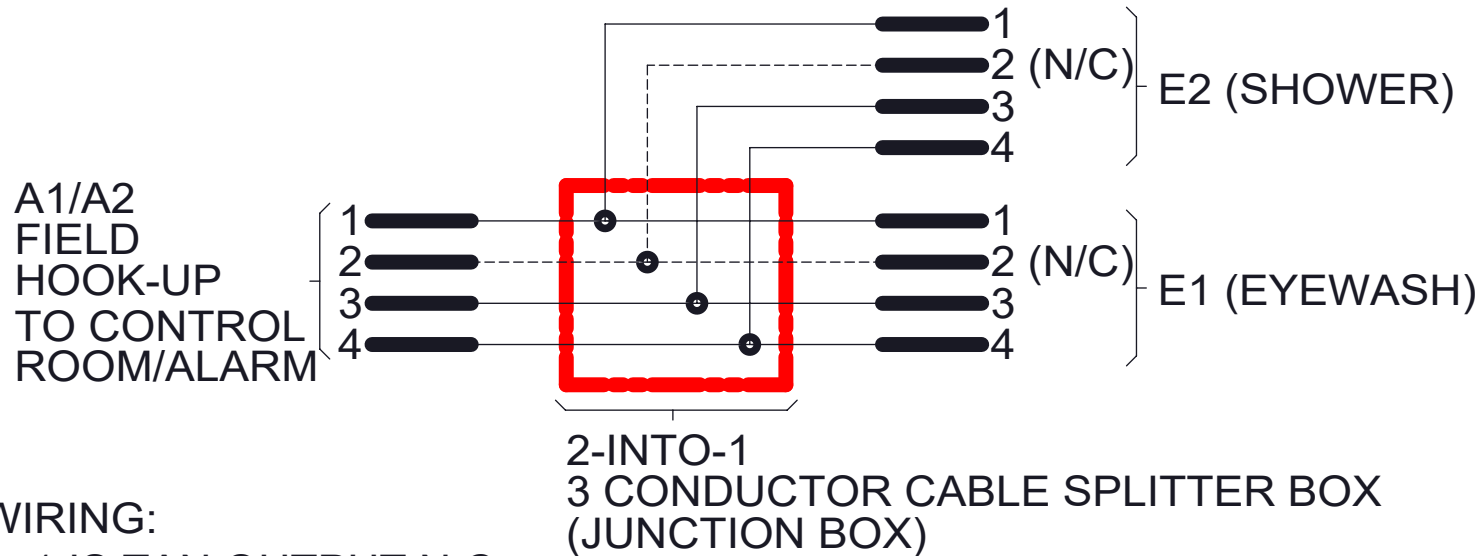
1455 KLEPPE LANE
SPARKS, NEVADA 89431
(775) 359-4712 FAX (775) 359-7424
E-MAIL: HAWS@HAWS.CO.COM
WEBSITE: WWW.HAWS.CO.COM

ECN: 5551	REV. EGN: 5973	BY: FV	MODEL(S) SP152S/SP152D/SP152SC/SP152DC/SP155PS	PART NUMBER 0510001049.D
DRAWN: LF	DATE: 07/30/20	CHKD: KM		REVISION 4
APPROVED: FV	DATE: 11/03/23	SCALE: 1:12	DRAWING TYPE: INSTALLATION	SIZE: A SHEET 4 OF 5

ALL ELECTRICAL INSTALLED PER LOCAL ELECTRICAL CODES.

Proximity Switches rated to 3Amps DC, Voltage 0-28VDC or 0-120VAC 100VA. Ambient Temperature -40° C to +60° C.

WIRING DIAGRAM FOR SP155-PS



WIRING:

- 1 IS TAN OUTPUT N.C.
- 2 IS WHITE OUTPUT N/C (NOT CONNECTED)
- 3 IS BLUE OUTPUT N.O.
- 4 IS BLACK OUTPUT COMMON

 Haws® <i>Since 1906</i>		1455 KLEPPE LANE SPARKS, NEVADA 89431 (775) 359-4712 FAX (775) 359-7424 E-MAIL: HAWS@HAWSO.COM WEBSITE: WWW.HAWSO.COM	
		MODEL(S) SP152S/SP152D/SP152SC/SP152DC/SP155PS	
ECN: 5551	REV. ECN: 5973	BY: FV	PART NUMBER
DRAWN: LF	DATE: 07/30/20	CHKD: KM	0510001049.D
APPROVED: FV	DATE: 11/03/23	SCALE: 1:12	REVISION
		DRAWING TYPE: INSTALLATION	4
		SIZE: A	SHEET 5 OF 5