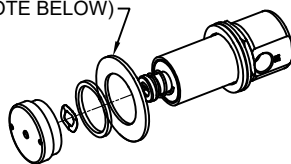


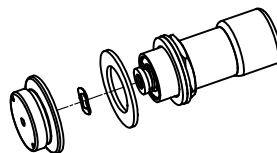
PARTS BREAKDOWN

*** OPTIONAL PCP WASHER FOR FLUSH MOUNT SURFACES (SEE NOTE BELOW)



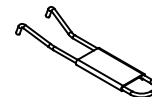
5874PB [1] [4]

POLISHED CHROME PLATED PUSH BUTTON WITH VALVE FOR BOTH RECESSED AND FLUSH MOUNT SURFACES.
(ALSO USED FOR REPLACEMENT OF OLDER VALVE MODELS 5871, 5872, AND 5872HF - SEE NOTE 4.)

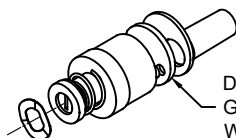


5874PBF [1]

POLISH CHROME PLATED FLANGE PUSH BUTTON WITH VALVE FOR FLUSH MOUNT SURFACES ONLY.



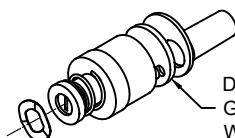
0006983506
SPANNER WRENCH
(ONLY INCLUDED WITH MODELS:
5874PB & 5874PBF)



VRK5874 [1] [2]

VALVE REPAIR KIT
(STANDARD FLOW)

DO NOT REMOVE
GASKET WHICH COMES
WITH CARTRIDGE.



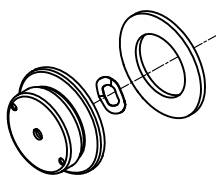
VRK5874HF [2] [3] [5]

VALVE CARTRIDGE
(HIGH FLOW)

DO NOT REMOVE
GASKET WHICH COMES
WITH CARTRIDGE.

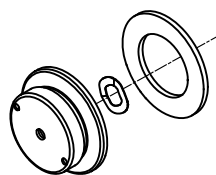


0003244389
THREADLOCKER TO
SECURE PUSH BUTTON
(ONLY INCLUDED W/PB SERIES)



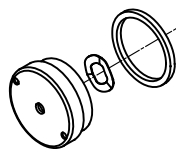
PBA6

POLISHED CHROME PLATED
FLANGED PUSH BUTTON FOR
FLUSH MOUNT SURFACES ONLY.



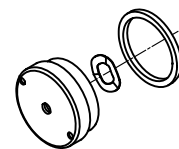
PBA6C

COPPER PLATED PUSH BUTTON
WITH CHROME FLANGE FOR
FLUSH MOUNT SURFACES ONLY.



PBA7

POLISHED CHROME PLATED PUSH
BUTTON FOR BOTH RECESSED
AND FLUSH MOUNT SURFACES.

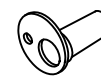


PBA7C

COPPER PLATED PUSH BUTTON
WITH CHROME OPERATOR FOR
BOTH RECESSED AND FLUSH
MOUNT SURFACES.



*** IF NEEDED, USE 1-3/4" O.D. X .050 THICK PCP
WASHER PN 0006729529 (NOT SUPPLIED) IN
SITUATIONS WHERE THE PUSH BUTTON HOLE IS
SLIGHTLY OVERSIZED FOR THE 5874PB RING NUT.



0002568123 [3]
GASKET W/SCREEN



0006626653
WAVE WASHER FOR USE WITH
BOTH RECESSED AND FLANGED
STYLE PUSH BUTTON ASSEMBLIES.
(MUST BE IN PLACE FOR PROPER
PUSH BUTTON OPERATION)

NOTES:

- [1] **MODELS 5874PB, 5874PBF, AND VRK5874 ARE EQUIPPED WITH A STANDARD FLOW CARTRIDGE.** ORDER THESE MODELS WHEN REPLACING/REPAIRING VALVES WITH A STANDARD FLOW APPLICATION. **DO NOT** USE ON ANY MODELS THAT FEATURE A CUSPIDOR OR HAVE A HIGH FLOW APPLICATION WITHOUT IMPLEMENTING ADDITIONAL REQUIRED STEPS (SEE NOTES 2 AND 3).
- [2] MODELS 1025/G AND 3300/G EQUIPPED WITH A POP-UP BUBBLER HEAD (MODEL 5725) AND MODEL VRK5874HF, 2406 (EQUIPPED WITH A CUSPIDOR) AND 1920 SERIES BOTTLE FILLER MODELS ALL UTILIZE A HIGH FLOW CARTRIDGE TO ENSURE PROPER FLOW.
- [3] WHEN REPLACING A HIGH FLOW CARTRIDGE ASSEMBLY, **DO NOT** USE VRK5874; USE VRK5874HF.
- [4] **FOR VALVE REPLACEMENT ON UNITS WITH OLDER 5871, 5872 (STANDARD FLOW) AND 5872HF (HIGH FLOW) VALVES:** CONTACT HAWS TECHNICAL SUPPORT.
- [5] **VRK5874HF IS ALSO USED ON 1920 SERIES BOTTLE FILLER MODELS (SEE NOTE 2).**

WHEN ORDERING PARTS PLEASE SPECIFY MODEL NUMBER.

		1455 KLEPPE LANE SPARKS, NEVADA 89431 (775) 359-4712 FAX (775) 359-7424 E-MAIL: HAWS@HAWS.CO.COM WEBSITE: WWW.HAWS.CO.COM	
		ECN NO. 4250 ECN: 5664 FV DATE 06/08/16 CHKD JL	
MODEL(S) 5874PB/5874PBF/VRK5874/VRK5874HF/ PBA6/PBA6C/PBA7/PBA7C		PART NUMBER 0002077650	
APPROVED FV DATE 03/02/21		SCALE: NA DRAWING TYPE: PARTS BREAKDOWN SIZE: A SHEET 1 OF 1	