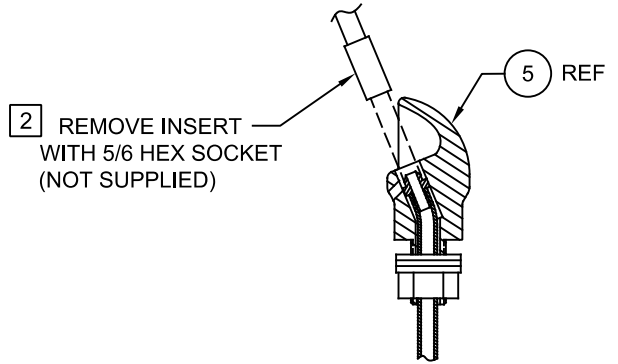
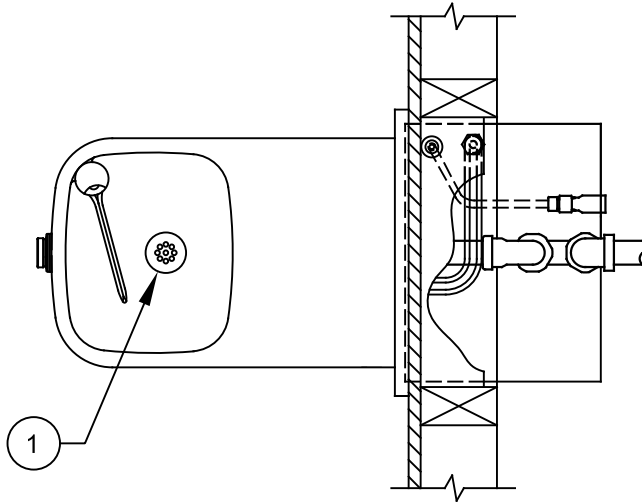


NOTES:

- 1 5874PBF (ITEM 5) INCLUDES VRK5874 CARTRIDGE ASSEMBLY (ITEM 12) AND PBA6 FLANGED PUSH BUTTON (ITEM 4).
- 2 ENSURE TUBE IS DISCONNECTED FROM PUSH BUTTON VALVE BODY PRIOR TO REMOVAL. APPLY ONE DROP OF LOCTITE 222MS TO NOZZLE THREADS PRIOR TO FASTENING BACK ONTO BUBBLER HEAD. RE-ATTACH TUBE TO VALVE.

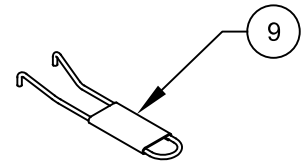
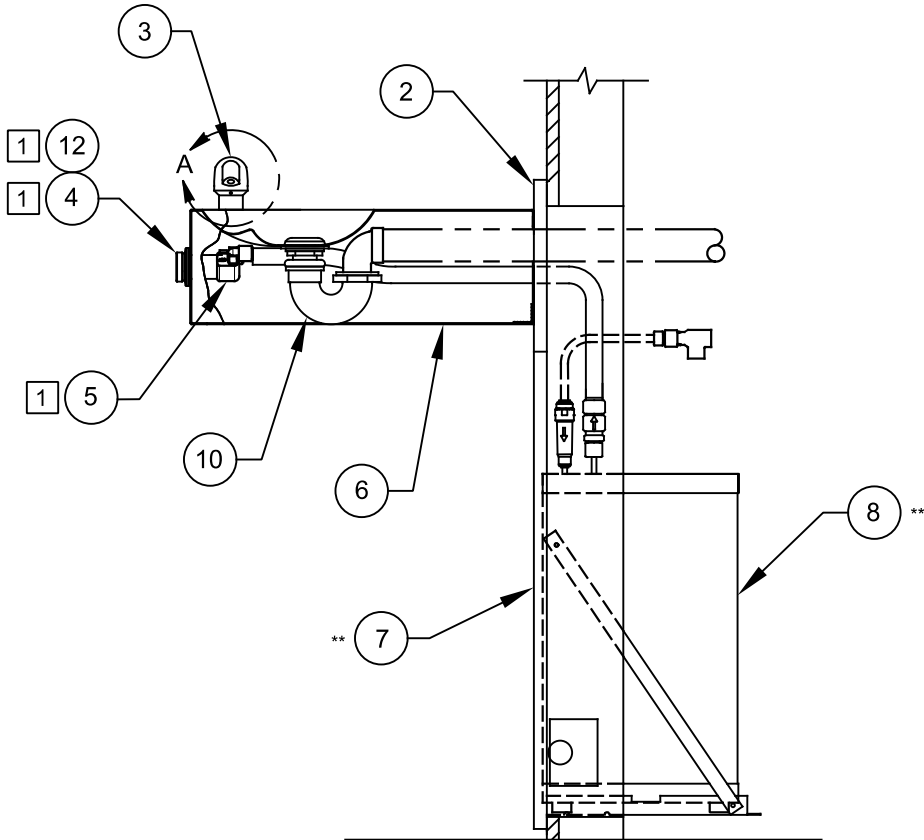
ITEM	DESCRIPTION	PART NO.	
1	STRAINER ASSEMBLY	6462	
2	BACK PANEL	BP3	
3	BUBBLER HEAD	5703M	
4	BUTTON, PUSH, FLANGED, ASSY	PBA6	
5	BUTTON, PUSH, FLANGED, WITH VALVE	5874PBF	
6	BOTTOM PLATE	PBM1109	
**	7	MOUNTING FRAME	MTGFR.SM
**	8	CHILLER	HCR8
9	SPANNER WRENCH	0006983506	
10	TRAP	0005982900	
11	DRIVER, NOZZLE .25 HEX (OPTIONAL)	0002082253	
12	VALVE REPAIR KIT	VRK5874	

** REQUIRED - SOLD SEPARATELY




2 REMOVE INSERT WITH 5/6 HEX SOCKET (NOT SUPPLIED)

DETAIL A
ROTATED 90° INTO VIEW



PARTS BREAKDOWN

WHEN ORDERING PARTS PLEASE SPECIFY MODEL NUMBER.

			1455 KLEPPE LANE SPARKS, NEVADA 89431 (775) 359-4712 FAX (775) 359-7424 E-MAIL: HAWS@HAWS.CO.COM WEBSITE: WWW.HAWS.CO.COM	
ECN NO.	REVISED PER	BY	MODEL(S)	PART NUMBER
	ECN: 6148	JG	1109.8	0002080252
DRAWN	DATE	CHKD		REVISION
F. VASQUEZ	08-25-08	JG		21
APPROVED	DATE		SCALE: 1:5	DRAWING TYPE: PARTS BREAKDOWN
FV	02/11/25		SIZE: A	SHEET 1 OF 1