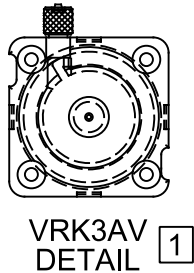
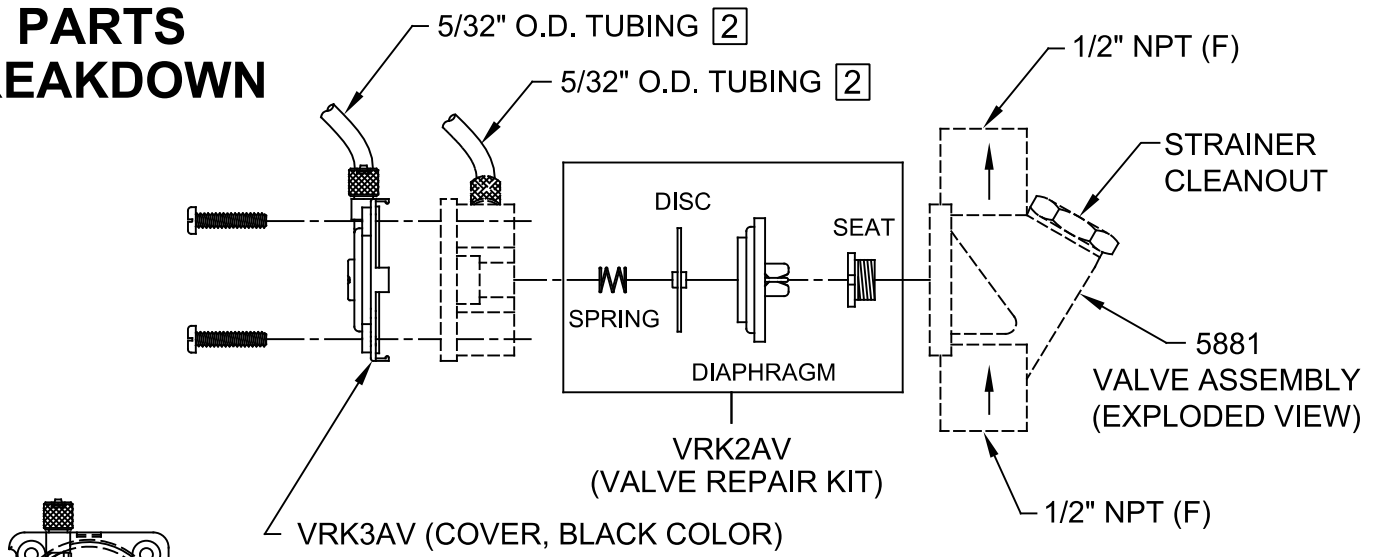


# PARTS BREAKDOWN

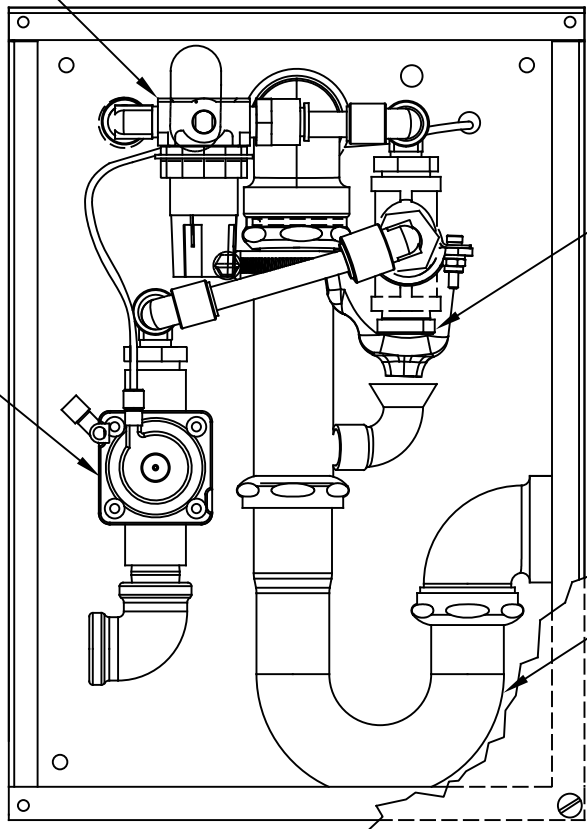


## NOTE:

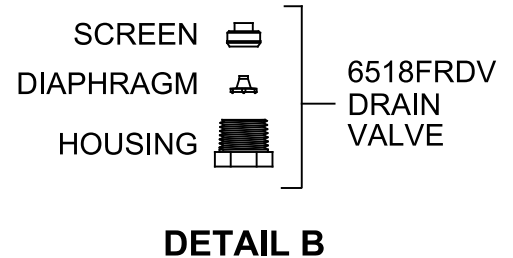
- 1 THIS BLACK COVER IS NOT INTERCHANGEABLE WITH GRAY COVER USED ON OLDER 5881 VALVES. (SCREWS & WASHERS NOT SUPPLIED WITH COVERS).
- 2 0006040013 TUBING (NOT SUPPLIED IN ANY VALVE REPAIR KITS OR REPLACEMENTS; MUST BE ORDERED SEPARATELY).

5867  
REGULATOR  
ASSEMBLY

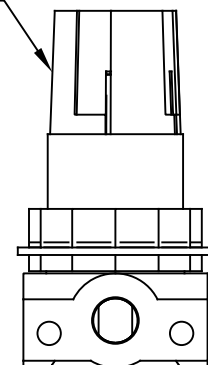
5881  
VALVE  
ASSEMBLY



SEE  
DETAIL B



ADJUSTMENT  
KNOB



5867 REGULATOR DETAIL

WHEN ORDERING PARTS PLEASE SPECIFY MODEL NUMBER.



1455 KLEPPE LANE  
SPARKS, NEVADA 89431  
(775) 359-4712 FAX (775) 359-7424  
E-MAIL: HAWS@HAWS.CO.COM  
WEBSITE: WWW.HAWS.CO.COM

ECN NO.	REVISED PER	BY	MODEL(S)	PART NUMBER
ECN: 6011	FV			0002077820
DRAWN	DATE	CHKD		REVISION
F. VASQUEZ	04/13/04	JC		20
APPROVED	DATE			
FV	07/30/24			
SCALE: N/A	DRAWING TYPE: PARTS BREAKDOWN	SIZE: A	SHEET 1 OF 1	