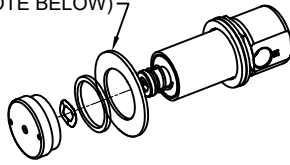


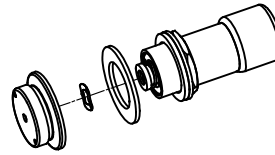
PARTS BREAKDOWN

*** OPTIONAL PCP WASHER FOR FLUSH MOUNT SURFACES (SEE NOTE BELOW)



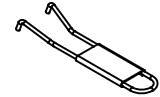
5874PB [1] [4]

POLISHED CHROME PLATED PUSH BUTTON WITH VALVE FOR BOTH RECESSED AND FLUSH MOUNT SURFACES. (ALSO USED FOR REPLACEMENT OF OLDER VALVE MODELS 5871, 5872, AND 5872HF - SEE NOTE 4.)



5874PBF [1]

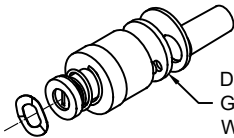
POLISH CHROME PLATED FLANGE PUSH BUTTON WITH VALVE FOR FLUSH MOUNT SURFACES ONLY.



0006983506
SPANNER WRENCH
(ONLY INCLUDED WITH MODELS: 5874PB & 5874PBF)



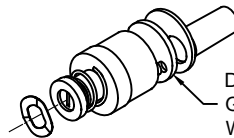
0003244389
THREADLOCKER TO SECURE PUSH BUTTON
(ONLY INCLUDED W/PB SERIES)



VRK5874 [1] [2]

VALVE REPAIR KIT
(STANDARD FLOW)

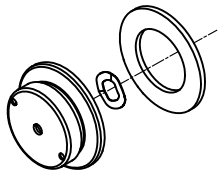
DO NOT REMOVE GASKET WHICH COMES WITH CARTRIDGE.



VRK5874HF [2] [3] [5]

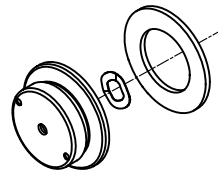
VALVE CARTRIDGE
(HIGH FLOW)

DO NOT REMOVE GASKET WHICH COMES WITH CARTRIDGE.



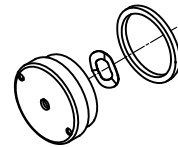
PBA6

POLISHED CHROME PLATED FLANGED PUSH BUTTON FOR FLUSH MOUNT SURFACES ONLY.



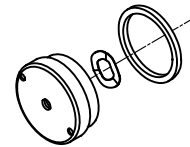
PBA6C

COPPER PLATED PUSH BUTTON WITH CHROME FLANGE FOR FLUSH MOUNT SURFACES ONLY.



PBA7

POLISHED CHROME PLATED PUSH BUTTON FOR BOTH RECESSED AND FLUSH MOUNT SURFACES.



PBA7C

COPPER PLATED PUSH BUTTON WITH CHROME OPERATOR FOR BOTH RECESSED AND FLUSH MOUNT SURFACES.



*** IF NEEDED, USE 1-3/4" O.D. X .050 THICK PCP WASHER PN 0006729529 (NOT SUPPLIED) IN SITUATIONS WHERE THE PUSH BUTTON HOLE IS SLIGHTLY OVERSIZED FOR THE 5874PB RING NUT.



0002568123 [3]
GASKET W/SCREEN



0006626653

WAVE WASHER FOR USE WITH BOTH RECESSED AND FLANGED STYLE PUSH BUTTON ASSEMBLIES. (MUST BE IN PLACE FOR PROPER PUSH BUTTON OPERATION)

NOTES:

- [1] **MODELS 5874PB, 5874PBF, AND VRK5874 ARE EQUIPPED WITH A STANDARD FLOW CARTRIDGE.** ORDER THESE MODELS WHEN REPLACING/REPAIRING VALVES WITH A STANDARD FLOW APPLICATION. **DO NOT** USE ON ANY MODELS THAT FEATURE A CUSPIDOR OR HAVE A HIGH FLOW APPLICATION WITHOUT IMPLEMENTING ADDITIONAL REQUIRED STEPS (SEE NOTES 2 AND 3).
- [2] MODELS 1025/G AND 3300/G EQUIPPED WITH A POP-UP BUBBLER HEAD (MODEL 5725) AND MODEL VRK5874HF, 2406 (EQUIPPED WITH A CUSPIDOR) AND 1920 SERIES BOTTLE FILLER MODELS ALL UTILIZE A HIGH FLOW CARTRIDGE TO ENSURE PROPER FLOW.
- [3] WHEN REPLACING A HIGH FLOW CARTRIDGE ASSEMBLY, **DO NOT** USE VRK5874; USE VRK5874HF.
- [4] **FOR VALVE REPLACEMENT ON UNITS WITH OLDER 5871, 5872 (STANDARD FLOW) AND 5872HF (HIGH FLOW) VALVES:** CONTACT HAWS TECHNICAL SUPPORT.
- [5] **VRK5874HF IS ALSO USED ON 1920 SERIES BOTTLE FILLER MODELS (SEE NOTE 2).**

		1455 KLEPPE LANE SPARKS, NEVADA 89431 (775) 359-4712 FAX (775) 359-7424 E-MAIL: HAWS@HAWS.CO.COM WEBSITE: WWW.HAWS.CO.COM	
		ECN NO. 4250 ECN: 5664 FV DATE 06/08/16 CHKD JL	MODEL(S) 5874PB/5874PBF/VRK5874/VRK5874HF/ PBA6/PBA6C/PBA7/PBA7C
WHEN ORDERING PARTS PLEASE SPECIFY MODEL NUMBER.			
APPROVED FV DATE 03/02/21	SCALE: NA	DRAWING TYPE: PARTS BREAKDOWN	SIZE: A SHEET 1 OF 1