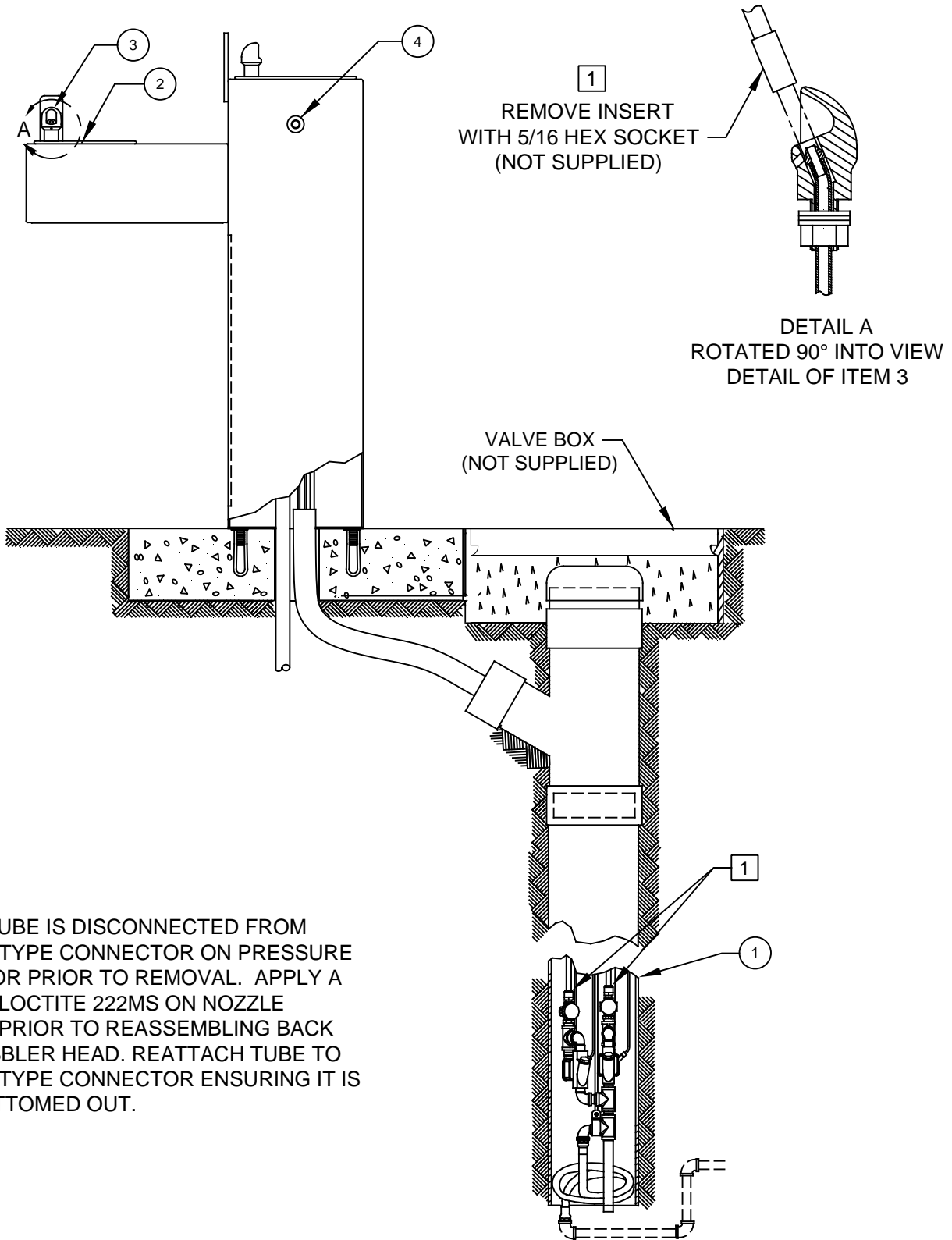


ITEM	DESCRIPTION	PART NO.
** 1	VALVE, DUAL, FREEZE RESISTANT	6518.2FR
2	STRAINER ASSY	6466
3	BUBBLER HEAD	5703M
4	PUSH BTN ASS'Y	5881PBA

\*\* REQUIRED - SOLD SEPARATELY




NOTE:

- 1 ENSURE TUBE IS DISCONNECTED FROM "PUSH-IN" TYPE CONNECTOR ON PRESSURE REGULATOR PRIOR TO REMOVAL. APPLY A DROP OF LOCTITE 222MS ON NOZZLE THREADS PRIOR TO REASSEMBLING BACK ONTO BUBBLER HEAD. REATTACH TUBE TO "PUSH-IN" TYPE CONNECTOR ENSURING IT IS FULLY BOTTOMED OUT.

# PARTS BREAKDOWN

WHEN ORDERING PARTS PLEASE SPECIFY MODEL NUMBER.

 <b>Haws</b> <sup>®</sup>		1455 KLEPPE LANE SPARKS, NEVADA 89431 (775) 359-4712 FAX (775) 359-7424 E-MAIL: HAWS@HAWSCO.COM WEBSITE: WWW.HAWSCO.COM	
		ECN NO. REVISED PER BY ECN: 5527 FV	MODEL(S) 3300FR
DRAWN D. OLLOM	DATE 11/25/95	CHKD DP	REVISION 14
APPROVED FV	DATE 04/02/20	SCALE: 1:14	DRAWING TYPE: PARTS BREAKDOWN
		SIZE: A	SHEET 1 OF 1