

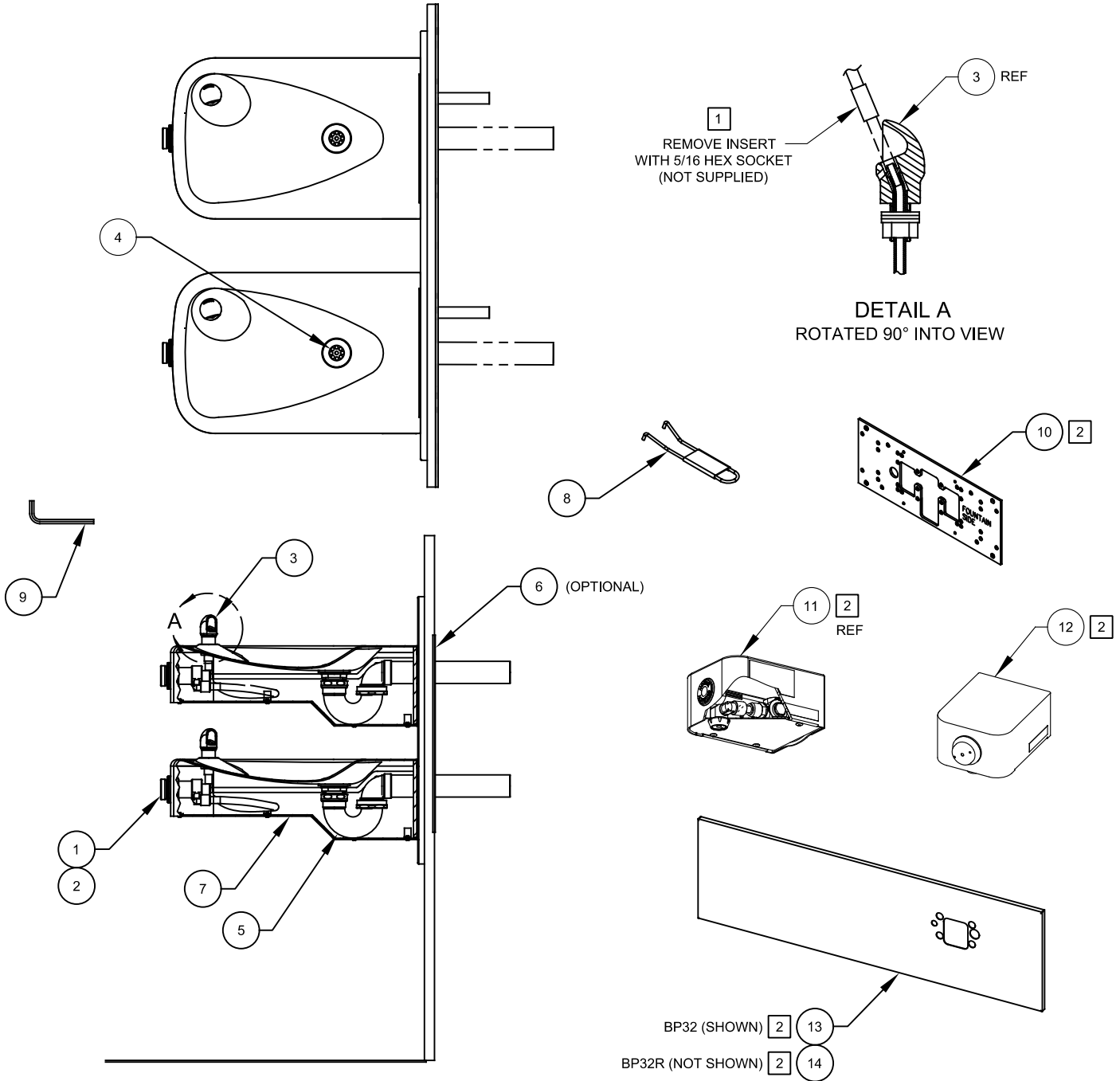
NOTES:

- 1 ENSURE TUBE IS DISCONNECTED FROM PUSH BUTTON VALVE BODY PRIOR TO REMOVAL. APPLY ONE DROP OF LOCTITE 222MS TO NOZZLE THREADS PRIOR TO FASTENING BACK ONTO BUBBLER HEAD. RE-ATTACH TUBE TO VALVE.
- 2 ITEMS 10 THRU 14 ARE OPTIONAL AND CAN BE CONFIGURED TO ADD EITHER A HANDS-OFF (1920HO) OR PUSH BUTTON (1920) BOTTLE FILLER, MOUNTED ON R.H. SIDE OF BACK PANEL (BP32) OR L.H. SIDE (REVERSED) OF BACK PANEL (BP32R) ON DUAL FOUNTAIN MODEL 1117.

(OPTIONAL)


2

ITEM	DESCRIPTION	PART NO.
1	VALVE REPAIR KIT	VRK5874
2	PUSH BUTTON ASSY	PBA6
3	BUBBLER HEAD ASSY, PCP	5703M
4	STRAINER, WASTE ASSY	6462
5	TRAP	0005982900
6	PLATE MOUNTING	6700.4
7	PLATE BOTTOM	PBM1107
8	SPANNER WRENCH	0006983506
9	KEY HEX F/PINNED HEX	0002981127
10	PLATE MOUNTING	6700
11	BOTTLE FILLER, HANDS-OFF	1920HO
12	BOTTLE FILLER	1920
13	BACK PANEL FOR 1920 OVER DUAL FOUNTAIN	BP32
14	BACK PANEL BF 32 REVERSED	BP32R



## PARTS BREAKDOWN

WHEN ORDERING PARTS PLEASE SPECIFY MODEL NUMBER.

		1455 KLEPPE LANE SPARKS, NEVADA 89431 (775) 359-4712 FAX (775) 359-7424 E-MAIL: HAWS@HAWS.CO.COM WEBSITE: WWW.HAWS.CO.COM	
ECN NO. 5221	REVISED PER ECN: 6148	BY JG	MODEL(S) 1117
DRAWN GC	DATE 08/23/17	CHKD JG	PART NUMBER 0580000675
APPROVED FV	DATE 02/12/25	SCALE: 1:1	REVISION 5
DRAWING TYPE: INSTALLATION		SIZE: A	SHEET 1 OF 1