

KIT INSTALLATION INSTRUCTIONS

VRK01E.A: KIT, REPAIR, 9201E, COMPLETE

CONSISTS OF VRK01E.B AND VRK01E.C. FOLLOW INSTRUCTIONS OUTLINED FOR EACH AS NOTED ON THIS PAGE.

VRK01E.B: KIT, REPAIR, 9201E, MAIN MIXING CHAMBER (REFER TO SHEET 2)

1. REMOVE 4 COVER BOLTS AND 4 WASHERS AS SHOWN.
2. REMOVE COVER.
3. REMOVE O-RING FROM COVER AND REPLACE WITH NEW O-RING FROM KIT.
4. REMOVE OVERLOAD ASSEMBLY FROM COVER BY PULLING STRAIGHT OUT, AND REPLACE WITH NEW OVERLOAD ASSEMBLY FROM KIT.
5. REMOVE PISTON/THERMOSTAT ASSEMBLY FROM VALVE BY PULLING STRAIGHT UP ON PISTON.
6. REMOVE CYLINDER ASSEMBLY FROM VALVE BY PULLING FIRMLY STRAIGHT UP ON THE CYLINDER ASSEMBLY.
7. REMOVE THREE PISTON SPRINGS FROM VALVE FUNNEL.
8. REMOVE VALVE FUNNEL FROM VALVE BY PULLING STRAIGHT UP ON FUNNEL AND FUNNEL O-RING IF IT DOES NOT COME OUT WITH THE FUNNEL.
9. INSTALL NEW FUNNEL O-RING AND FUNNEL FROM KIT.
10. INSTALL NEW CYLINDER ASSEMBLY FROM KIT AS SHOWN ON SHEET 2 BY PRESSING FIRMLY STRAIGHT DOWN AND ROCKING THE ASSEMBLY TO WORK IT PAST THE COLD INLET CHANNEL.
11. INSTALL 3 NEW PISTON SPRINGS FROM KIT INTO VALVE FUNNEL.
12. INSTALL NEW PISTON ASSEMBLY INTO CYLINDER AS SHOWN ON SHEET 2, BEING CAREFUL TO CLOCK THE PISTON SUCH THAT THE THREE FLATS UNDER THE PISTON SIT ON THE PISTON SPRINGS. THE PISTON SHOULD MOVE FREELY AGAINST THE SPRING PRESSURE IN THE CYLINDER.
13. INSTALL THE EXISTING COVER ON THE VALVE (CLOCKING IS NOT CRITICAL) AND INSERT THE FOUR COVER BOLTS AND WASHERS.
14. TIGHTEN BOLTS IN A CROSS PATTERN EVENLY UNTIL THE COVER CONTACTS THE VALVE BODY.
15. TORQUE BOLTS TO 13 FT-LBS.

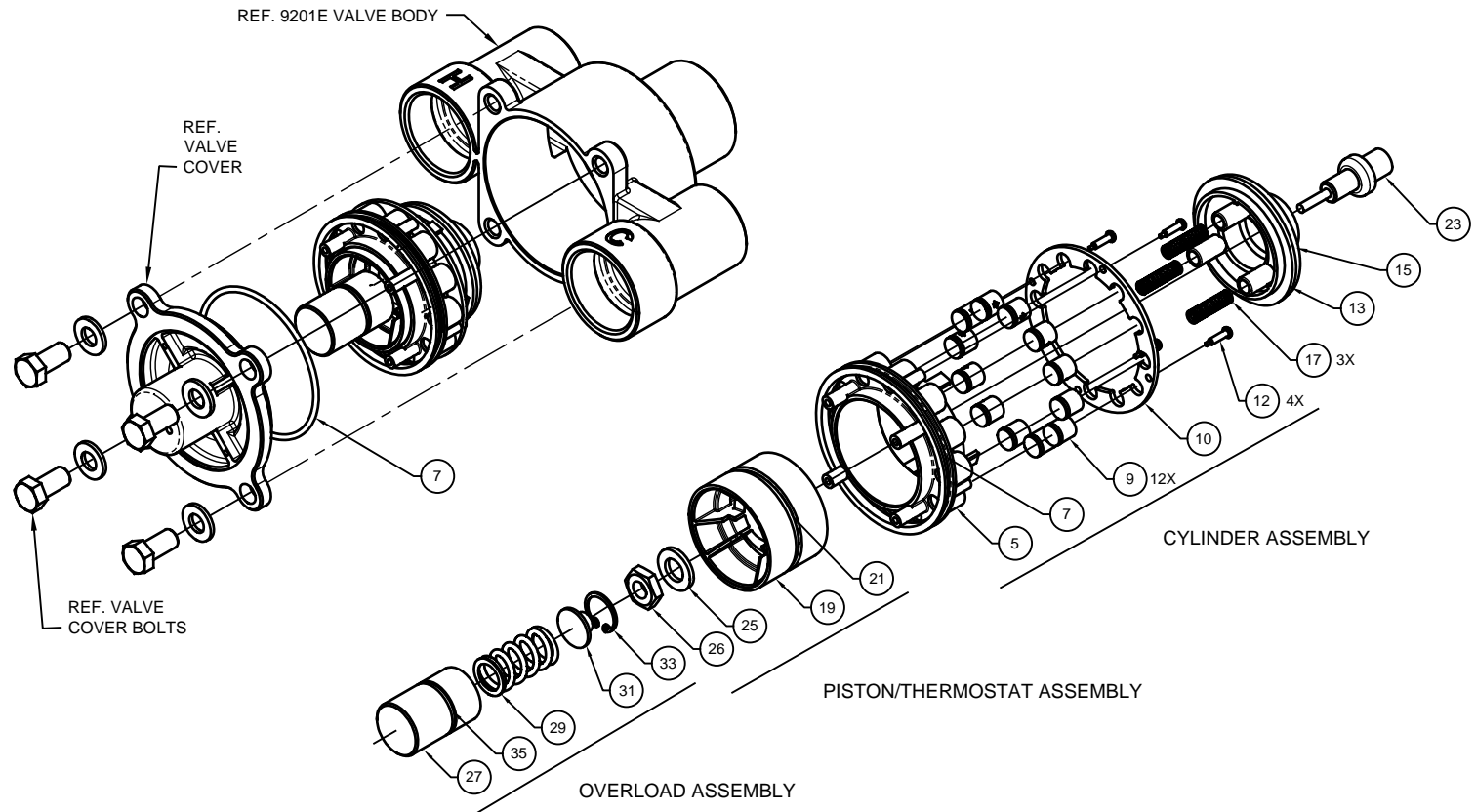
VRK01E.C: KIT, REPAIR, 9201E, CHECK STOPS (REFER TO SHEET 3)

1. NOTE: HOT AND COLD CHECK STOP ASSEMBLIES ARE IDENTICAL.
2. REMOVE HOT CHECK STOP COVER WITH 1-3/8" WRENCH OR ADJUSTABLE WRENCH.
3. REMOVE SPRING, CHECK STOP ASSEMBLY, CAGE, AND MESH SCREEN FROM VALVE.
4. CLEAN ANY VISIBLE DEBRIS FROM CHECK STOP CAVITY.
5. INSTALL NEW MESH SCREEN, CAGE, AND CHECK STOP ASSEMBLY FROM KIT AS SHOWN ON SHEET 3.
6. INSTALL NEW SPRING, ADJUSTMENT SCREW, AND CHECK STOP COVER FROM KIT. ADJUSTMENT SCREW SHOULD ALWAYS BE FULLY OUT (CCW) UNLESS THERE IS A NEED TO SHUT OFF THE HOT OR COLD WATER FOR TESTING.
7. REPEAT STEPS 2-6 WITH COLD CHECK STOP ASSEMBLY.

VRK01E.E: KIT, BASIC MAINT, 9201E, T-STAT+O-RINGS


1. REFER TO EXPLODED VIEWS IN SHEETS 2-3 AND DISASSEMBLY AND RE-ASSEMBLY INSTRUCTIONS ON THIS PAGE.
2. RECOMMEND ANY DRY O-RINGS BE LUBRICATED WITH FOOD GRADE SILICONE LUBRICANT, SUCH AS DOW CORNING 111 PRIOR TO INSTALLATION.
3. THERMOSTAT SHOULD BE INSTALLED SNUGLY, TAKING CARE NOT TO DAMAGE IT.
4. MAIN COVER BOLTS SHOULD BE TORQUED TO 13 FT-LBS PER VRK01H.B INSTRUCTIONS.

| | | | |
|--|--|---|--|
| | | 1455 KLEPPE LANE SPARKS, NEVADA 89431 (775) 359-4712 FAX (775) 359-7424 E-MAIL: HAWS@HAWS.CO.COM WEBSITE: WWW.HAWS.CO.COM | |
| | | ECN NO. 5425 DRAWN: DP APPROVED: NE | REVISED PER: ECN: 5425 DATE: 04/30/19 DATE: 05/06/19 |
| | | PART NUMBER 0510000952 | REVISION 1 |
| | | SCALE: 1:2.125 | DRAWING TYPE: INSTALLATION |
| | | SIZE: A | SHEET 1 OF 3 |



VRK01E.B MAIN MIXING CHAMBER REPAIR KIT SHOWN ON THIS SHEET

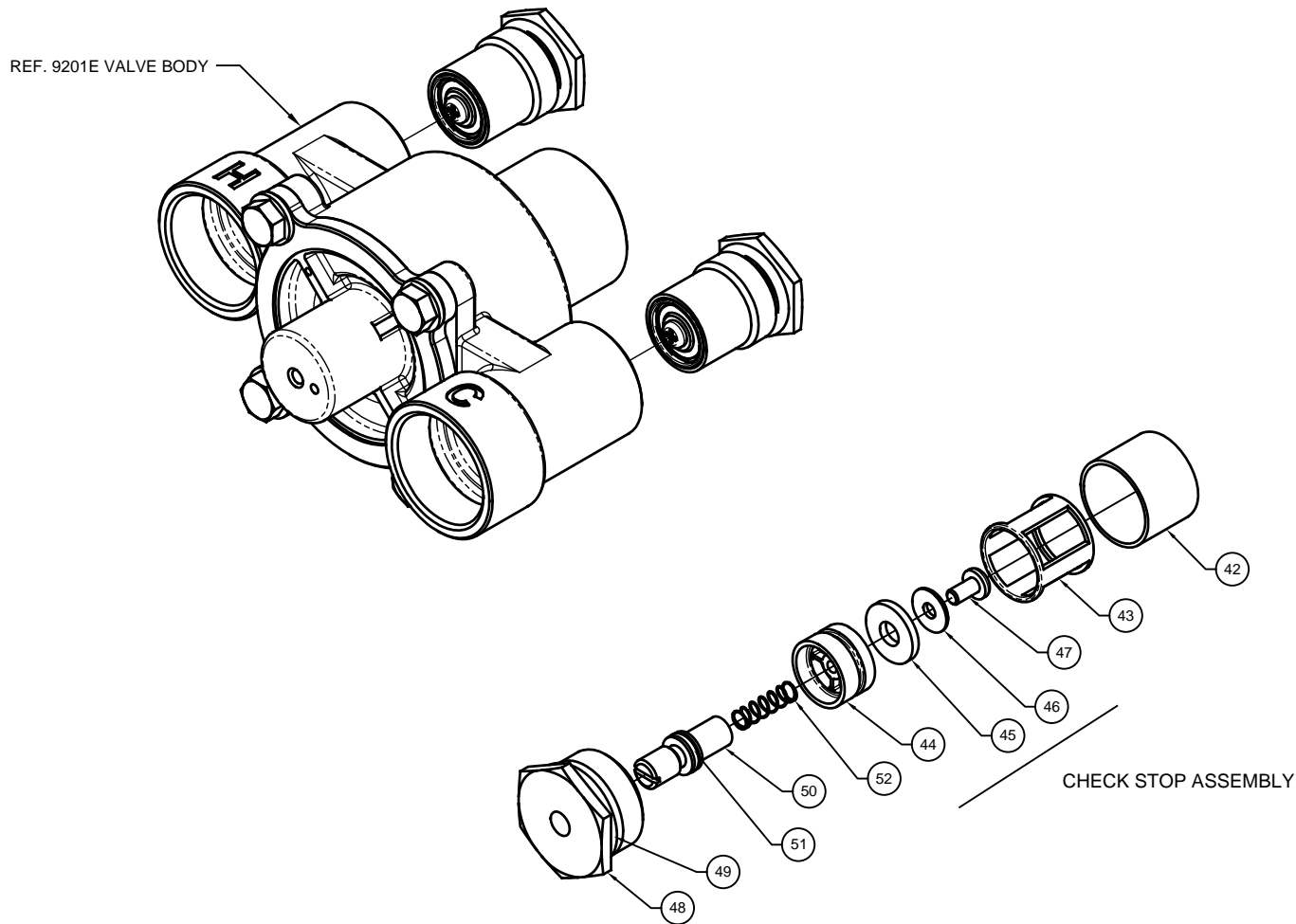
| VRK01E.B MAIN MIXING CHAMBER REPAIR KIT | | | | |
|---|------------------------|-----|--------------------------------------|---------------------------|
| ITEM # | SUB ASSEMBLY | QTY | DESCRIPTION | VRK01E.E BASIC MAINT. KIT |
| 7 | N/A | 1 | O-RING DASH# 150 (2.862 ID X .103 W) | INCLUDED |
| 27 | OVERLOAD ASSEMBLY | 1 | OVERLOAD HOUSING | |
| 35 | OVERLOAD ASSEMBLY | 1 | O-RING DASH# 020 (.864 ID X .070 W) | INCLUDED |
| 29 | OVERLOAD ASSEMBLY | 1 | OVERLOAD COMPRESSION SPRING | |
| 31 | OVERLOAD ASSEMBLY | 1 | OVERLOAD INSERT | |
| 33 | OVERLOAD ASSEMBLY | 1 | RETAINING RING | |
| 26 | PISTON/THERMOSTAT ASSY | 1 | JAMB NUT M10 X 1.5 SST | |
| 25 | PISTON/THERMOSTAT ASSY | 1 | FLAT WASHER SST | |
| 19 | PISTON/THERMOSTAT ASSY | 1 | PLUNGER | |
| 21 | PISTON/THERMOSTAT ASSY | 1 | O-RING DASH# 132 (1.737 ID X .103 W) | INCLUDED |
| 23 | PISTON/THERMOSTAT ASSY | 1 | THERMOSTAT MAIN 60-100 | INCLUDED |
| 5 | CYLINDER ASSEMBLY | 1 | SLEEVE | |
| 7 | CYLINDER ASSEMBLY | 1 | O-RING DASH# 150 (2.862 ID X .103 W) | INCLUDED |
| 9 | CYLINDER ASSEMBLY | 12 | CHECK VALVE 10MM | |
| 10 | CYLINDER ASSEMBLY | 1 | CHECK VALVE RETAINER | |
| 12 | CYLINDER ASSEMBLY | 4 | SCREW #4 SST | |
| 17 | N/A | 3 | PISTON SPRING SST | |
| 13 | N/A | 1 | FUNNEL VALVE | |
| 15 | N/A | 1 | O-RING DASH# 329 (1.975 ID X .210 W) | INCLUDED |



Haws

1455 KLEPPE LANE
SPARKS, NEVADA 89431
(775) 359-4712 FAX (775) 359-7424
E-MAIL: HAWS@HAWSCO.COM
WEBSITE: WWW.HAWSCO.COM


| | | | | | |
|--------------|-----------------------|------------|----------------------------|-------------------------------------|---------------------------|
| ECN NO. 5425 | REVISED PER ECN: 5425 | BY: DP | MODEL(S) | VRK01E.A/B/C/E VALVE REPAIR KITS | PART NUMBER 0510000952 |
| DRAWN: DP | DATE: 04/30/19 | CHKD.: FV | | | REVISION 1 |
| APPROVED: NE | DATE: 05/06/19 | SCALE: N/A | DRAWING TYPE: INSTALLATION | SIZE: A | SHEET 2 OF 3 |



NOTE: HOT AND COLD CHECK STOPS ARE IDENTICAL. KIT INCLUDES BOTH.

**VRK01E.C CHECK STOPS REPAIR KIT
SHOWN ON THIS SHEET**

| VRK01E.C CHECK STOPS REPAIR KIT | | | | |
|---------------------------------|-----------------|-----|--------------------------------------|---------------------------|
| ITEM # | SUB ASSEMBLY | QTY | DESCRIPTION | VRK01E.E BASIC MAINT. KIT |
| 48 | N/A | 2 | CHECK STOP COVER BONNET | |
| 49 | N/A | 2 | O-RING DASH# 215 (1.046 ID X .139 W) | INCLUDED |
| 51 | N/A | 2 | O-RING DASH# 012 (.364 ID X .070 W) | INCLUDED |
| 50 | N/A | 2 | STEM CHECK STOP ADJUST. SCREW | |
| 52 | N/A | 2 | SPRING | |
| 44 | CHECK STOP ASSY | 2 | POPPET (NO O-RING) | |
| 45 | CHECK STOP ASSY | 2 | WASHER EPDM | |
| 46 | CHECK STOP ASSY | 2 | WASHER SST | |
| 47 | CHECK STOP ASSY | 2 | SCREW SST 10-24 | |
| 43 | N/A | 2 | CAGE SLEEVE | |
| 42 | N/A | 2 | MESH SCREEN SST | |

| | | | |
|---|--|---|--|
|  | | 1455 KLEPPE LANE SPARKS, NEVADA 89431 (775) 359-4712 FAX (775) 359-7424 E-MAIL: HAWS@HAWS.CO.COM WEBSITE: WWW.HAWS.CO.COM | |
| | | ECN NO. 5425 DRAWN: DP APPROVED: NE | REVISED PER: ECN: 5425 DATE: 04/30/19 DATE: 05/06/19 |
| | | PART NUMBER 0510000952 | REVISION 1 |
| SCALE: N/A | | DRAWING TYPE: INSTALLATION | SIZE: A SHEET 3 OF 3 |