

MODEL SP155 THERMOSTAT REPLACEMENT FOR MODELS 8317CTFP & 8317CTFP.220V

REFER TO FIGURES SHOWN BELOW TO DETERMINE WHICH THERMOSTAT STYLE IS CURRENTLY INSTALLED ON YOUR UNIT. FOLLOW INSTRUCTIONS ACCOMPANYING EACH FIGURE.

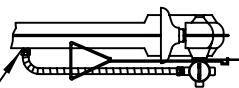


FIGURE 1
THERMO

REPLACEMENT INSTRUCTIONS:

- 1) REMOVE JUNCTION BOX ACCESS COVER.
- 2) DISCONNECT THERMOSTAT LEADS FROM TERMINAL BLOCK.
- 3) REMOVE FLEX CONDUIT AND CONNECTOR FROM JUNCTION BOX.
- 4) REMOVE FLEX CONDUIT AND CONNECTOR FROM THERMOSTAT.
- 5) CUT THERMOSTAT LEADS AT THERMOSTAT AND DISCARD.
- 6) PLUG JUNCTION BOX HUB, AND THERMOSTAT USING CONDUIT PLUGS.
- 7) INSTALL NEW THERMOSTAT PER NOTES 4-6, FIGURE 3.

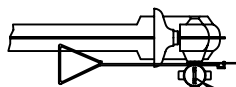
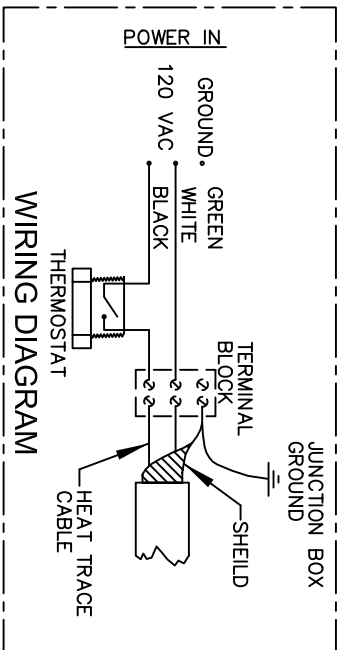


FIGURE 3
THERMO INSIDE

REPLACEMENT INSTRUCTIONS:

- 1) REMOVE JUNCTION BOX ACCESS COVER.
- 2) DISCONNECT THERMOSTAT LEADS FROM TERMINAL BLOCK.
- 3) UNTHREAD THERMOSTAT FROM MOUNTING PAD.
- 4) THREAD NEW THERMOSTAT ONTO MOUNTING PAD LOCATED INSIDE JUNCTION BOX.
- 5) CONNECT THERMOSTAT LEADS TO TERMINAL BLOCK (SEE WIRING DIAGRAM).
- 6) REPLACE ACCESS COVER.



THERMO INSIDE

REPLACEMENT INSTRUCTIONS:

- 1) REMOVE JUNCTION BOX ACCESS COVER.
- 2) DISCONNECT THERMOSTAT LEADS FROM TERMINAL BLOCK.
- 3) CUT THERMOSTAT LEADS AT THERMOSTAT AND DISCARD.
- 4) INSTALL NEW THERMOSTAT PER NOTES 4-6, FIGURE 3.

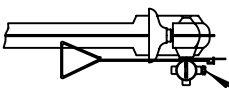


FIGURE 2
THERMO INSIDE

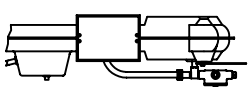
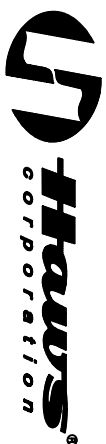


FIGURE 4
THERMO INSIDE

REPLACEMENT INSTRUCTIONS:

- 1) REMOVE JUNCTION BOX ACCESS COVER.
- 2) DISCONNECT THERMOSTAT LEADS FROM TERMINAL BLOCK.
- 3) UNTHREAD THERMOSTAT FROM MOUNTING PAD.
- 4) THREAD NEW THERMOSTAT ONTO MOUNTING PAD LOCATED INSIDE JUNCTION BOX.
- 5) CONNECT THERMOSTAT LEADS TO TERMINAL BLOCK (SEE WIRING DIAGRAM).
- 6) REPLACE ACCESS COVER.

MODEL SP155 THERMOSTAT:
1) HAS HERMETICALLY SEALED CONTACTS.
2) OPENS (RISING) AT 62°F
3) CLOSES (FALLING) AT 52°F



1455 KLEPPE LANE
SPARKS, NEVADA 89431
(775) 359-4712 FAX (775) 359-7424
E-MAIL: HAWS@HAWS.CO.COM
WEBSITE: WWW.HAWS.CO.COM

EQ/NO:	TERMINAL BLOCK	FOR:	MODEL(S):
DATE:	ENCL. 4381	REV:	SP155
APPROVED:	2/23/91	CHG:	INFO FAX DOC #:
			277155
			INSTALLATION/FABR/CAB
			SIZE: A
			SHEET: 1 OF 1
			REV:
			002080320
			09955C00
			2