

NOTES:

1. HOLD ROUGH-IN DIMENSIONS $\pm 1/8"$ (3.2mm)
2. WHEN INSTALLING THIS UNIT, LOCAL, STATE, OR FEDERAL CODES SHOULD BE ADHERED TO. FOR INSTALLATION HEIGHTS OTHER THAN SHOWN, DIMENSIONS MARKED (*) MUST BE ADJUSTED ACCORDINGLY.
3. REFER TO 5874 SERIES OPERATION AND MAINTENANCE MANUAL FOR PUSH BUTTON AND VALVE INSTALLATION/MAINTENANCE INSTRUCTIONS.
4. REFER TO MTGFR.7 INSTALLATION DRAWING FOR FRAME ROUGH-IN DIMENSIONS.
5. INSERT 5/16"-18 PANEL NUT RETAINERS FROM OPPOSITE SIDE AT LOCATIONS SHOWN.
6. FOUNTAIN REMOVAL: FIRST REMOVE SCREWS AND THEN SQUEEZE CLIPS ON NUT RETAINER TO POP OUT. INSTALL IS REVERSE OF REMOVAL.
7. ALIGN HOLES IN CHILLER SUPPORT TRAY WITH HOLES IN FRAME AND FASTEN WITH #10 SHEET METAL SCREWS.
8. ROUGH-IN DIMENSIONS FOR FOUNTAIN HEIGHTS:

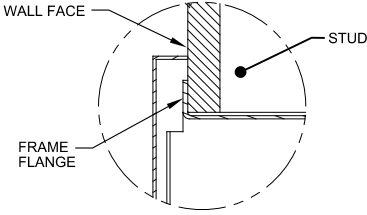
CHILD WHEELCHAIR HEIGHT:
WASTE: 26-1/4" (667mm)
SUPPLY: 26-1/8" (664mm)
FOUNTAIN: 24" (610mm)
BUBBLER: 29-7/8" (756mm)
FRAME: 3-1/16" (78mm)

ADULT WHEELCHAIR HEIGHT:
WASTE: 29-1/4" (743mm)
SUPPLY: 29-1/8" (740mm)
FOUNTAIN: 27" (686mm)
BUBBLER: 32-7/8" (832mm)
FRAME: 6-1/16" (154mm)

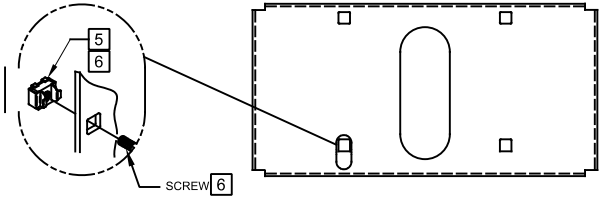
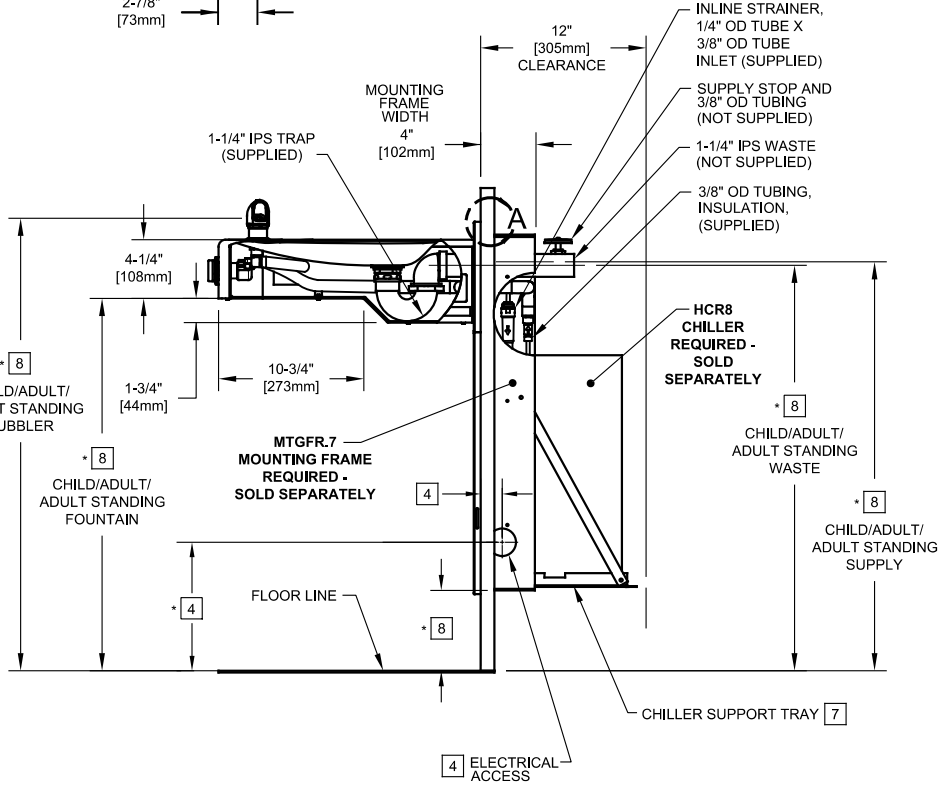
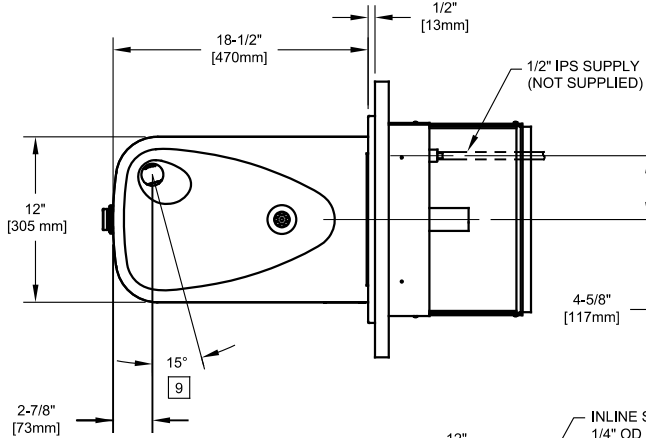
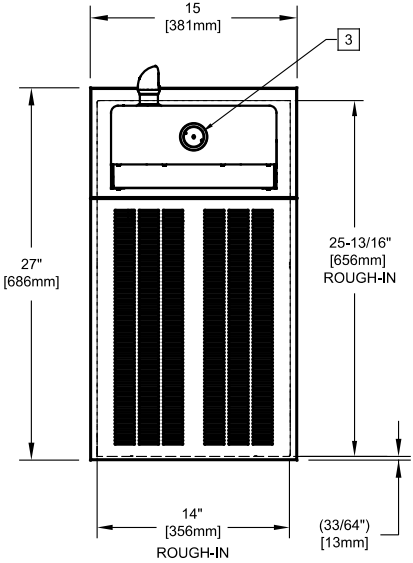
ADULT STANDING HEIGHT:
WASTE: 34-3/4" (883mm)
SUPPLY: 34-5/8" (879mm)
FOUNTAIN: 32-1/2" (826mm)
BUBBLER: 39-3/8" (972mm)
FRAME: 11-9/16" (294mm)

9. MAXIMUM ADJUSTABLE RANGE IS 15° FROM PARALLEL TO BACK WALL.

**IMPORTANT: MOUNTING
FRAME MUST BE INSTALLED
SO THAT LIP OF FRAME SITS
AGAINST FINISHED WALL FACE.**



DETAIL A



BOWL MOUNTING DETAIL



1455 KLEPPE LANE
SPARKS, NEVADA 89431
(775) 359-4712 FAX (775) 359-7424
E-MAIL: HAWS@HAWS.CO.COM
WEBSITE: WWW.HAWS.CO.COM

ECN NO.	REVISED PER	BY:	MODEL(S)	PART NUMBER
ECN: 6148	DATE:	JG		1107.8
DRAWN:	DATE:	CHK'D:		0002080221.D
C.FENNER	12-19-06	JG		REVISION
APPROVED:	DATE:			17
FV	02/11/25			
SCALE:	N/A	DRAWING TYPE:	INSTALLATION	SIZE: A SHEET 1 OF 1