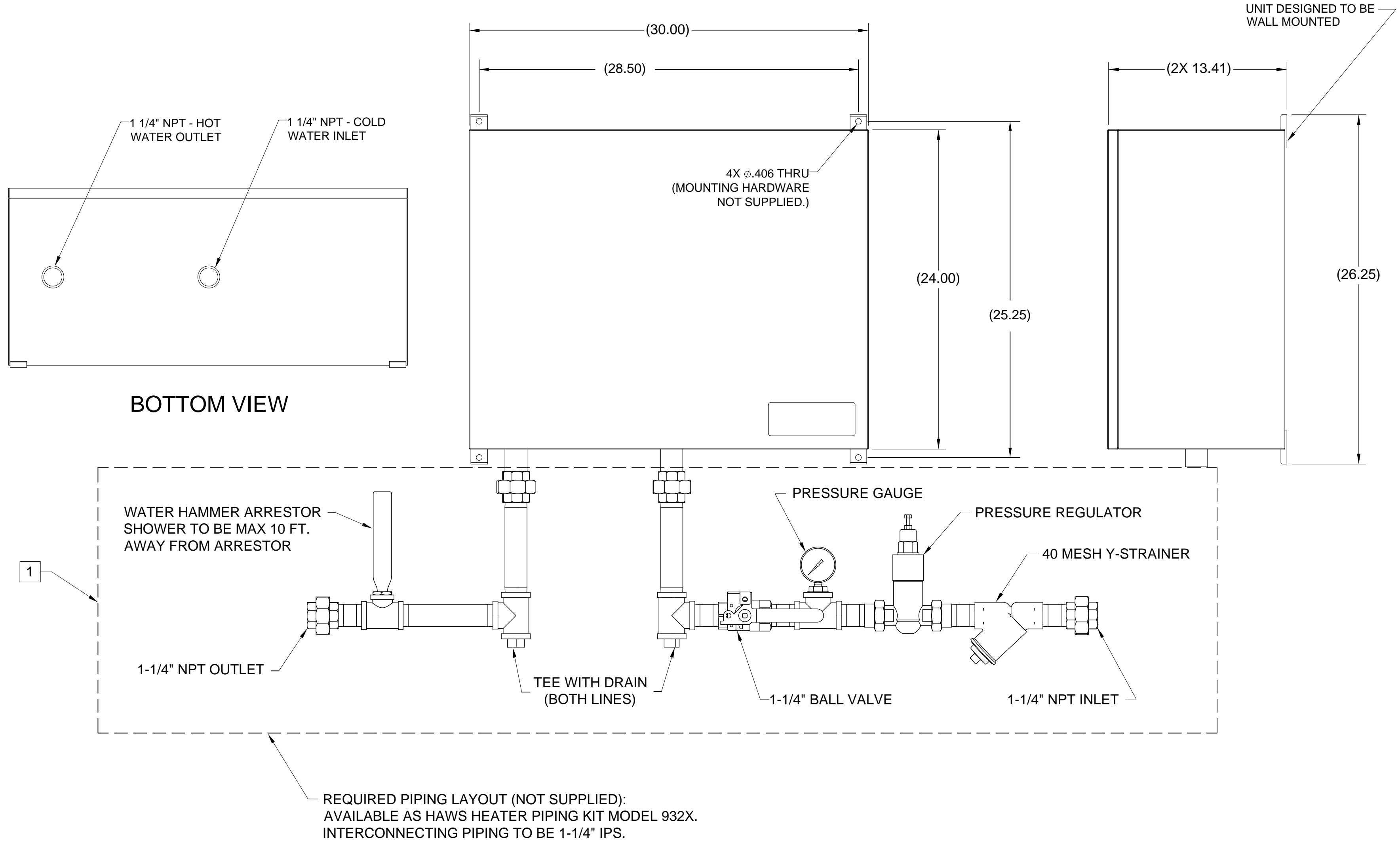


NOTES:

1. ITEMS SHOWN DASHED (IN BOX) ARE SHOWN FOR REFERENCE ONLY AND ARE NOT SUPPLIED. MANUFACTURER REQUIRES ALL COMPONENTS TO PROTECT UNIT, AND PROVIDE FUTURE SERVICEABILITY. INTERCONNECTING PIPING TO BE 1-1/4" IPS.
2. REFER TO OWNER'S MANUAL FOR INSTALLATION INSTRUCTIONS
3. DESIGNED FOR WALL MOUNTED INSTALLATION



		1455 KLEPPE LANE SPARKS, NEVADA 89431 (775) 359-4712 FAX (775) 359-7424 E-MAIL: HAWS@HAWS.CO.COM WEBSITE: WWW.HAWS.CO.COM			
		ECN NO. 5318 DRAWN: VWC APPROVED: DP	REVISED PER: ECN: 5517 DATE: 1-30-14 DATE: 02/13/20	BY: FV CHK'D: LF	MODEL(S) 9326 AND 9327
SCALE: N/A			DRAWING TYPE: INSTALLATION	SIZE: A	PART NUMBER 0002080089.D REVISION 4
SHEET 1 OF 1					