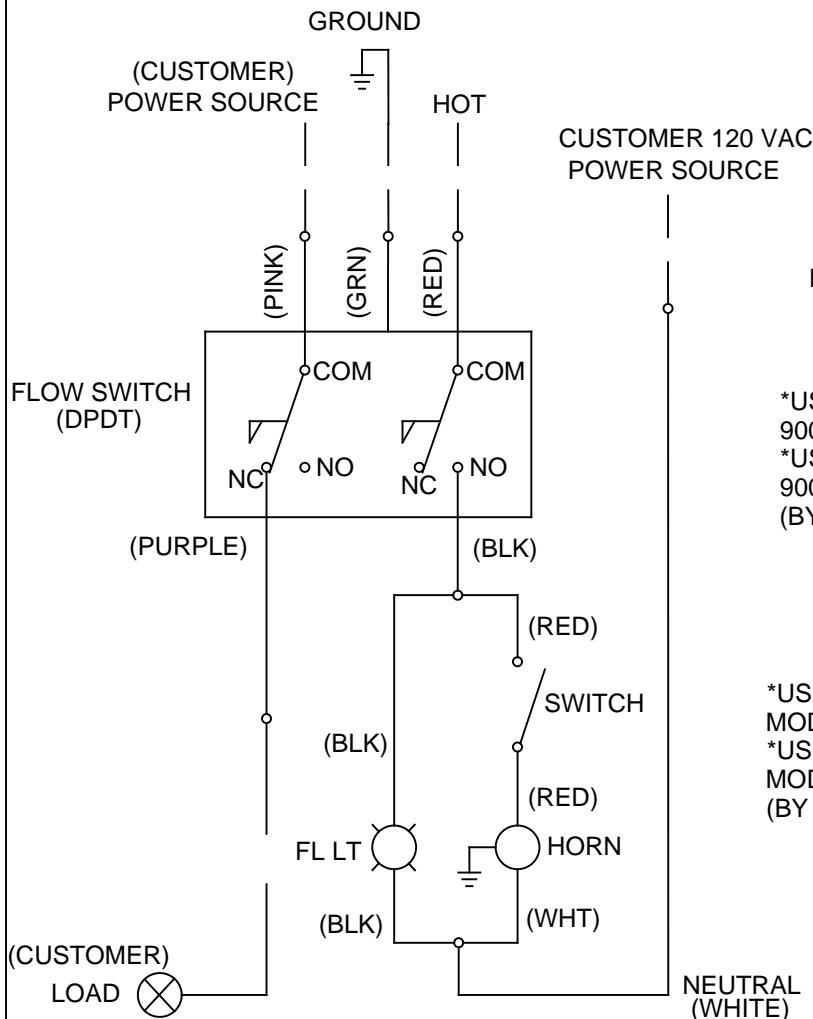


NOTES:

1. THE SIGNAL FROM THE PURPLE WIRE WILL BE SUPPLY VOLTAGE WHEN NO WATER IS FLOWING AND ZERO VOLTAGE WHEN THE FLOW SWITCH AND LOCAL ALARM ARE ACTIVATED. IF A REMOTE ALARM IS NOT USED, THE PURPLE WIRE MUST BE INSULATED AT ITS FREE END. LEAVING THE TWO CRIMP TERMINALS (SUPPLIED) CONNECTED WILL DO THIS.
2. INSTALLER MUST USE A THREAD SEALANT, SUCH AS APPLETON TLC3, RECOMMENDED FOR USE ON ELECTRICAL COMPONENTS ON ALL ELECTRICAL NPT CONNECTIONS.



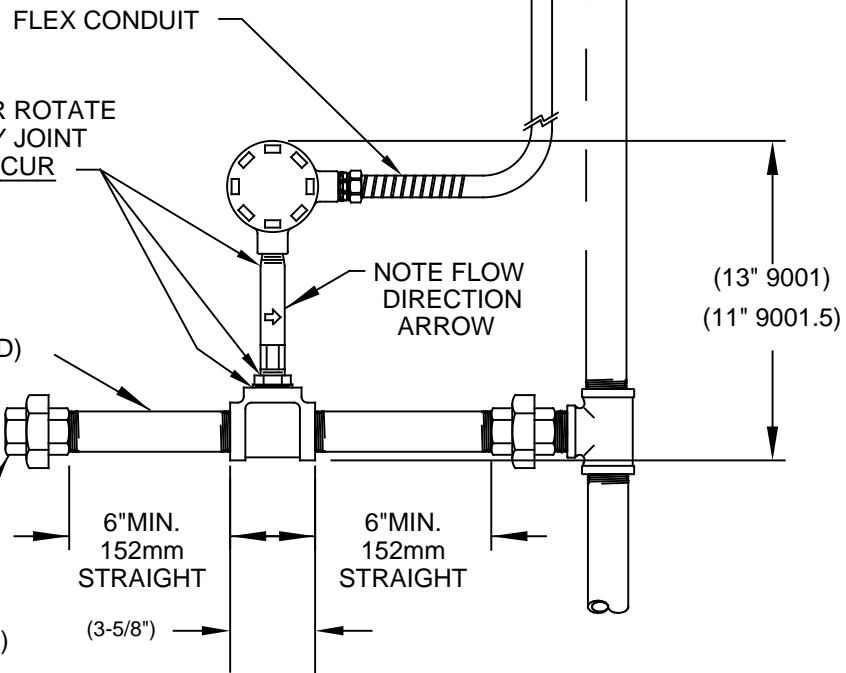
WIRING DIAGRAM

SEE SHEET 2 FOR CLAMP ASSEMBLY DETAIL

CAUTION:
DO NOT DISASSEMBLE OR ROTATE THIS ASSEMBLY AT ANY JOINT AS DAMAGE WILL OCCUR

*USE 1 1/4" IPS FOR MODEL 9001.5ESDTYPE4X.
*USE 1/2" IPS FOR MODEL 9001.ESDTYPE4X.
(BY OTHERS RECOMMENDED)

*USE 1 1/4" UNIONS FOR MODEL 9001.5ESDTYPE4X.
*USE 1/2" UNIONS FOR MODEL 9001.ESDTYPE4X
(BY OTHERS RECOMMENDED)

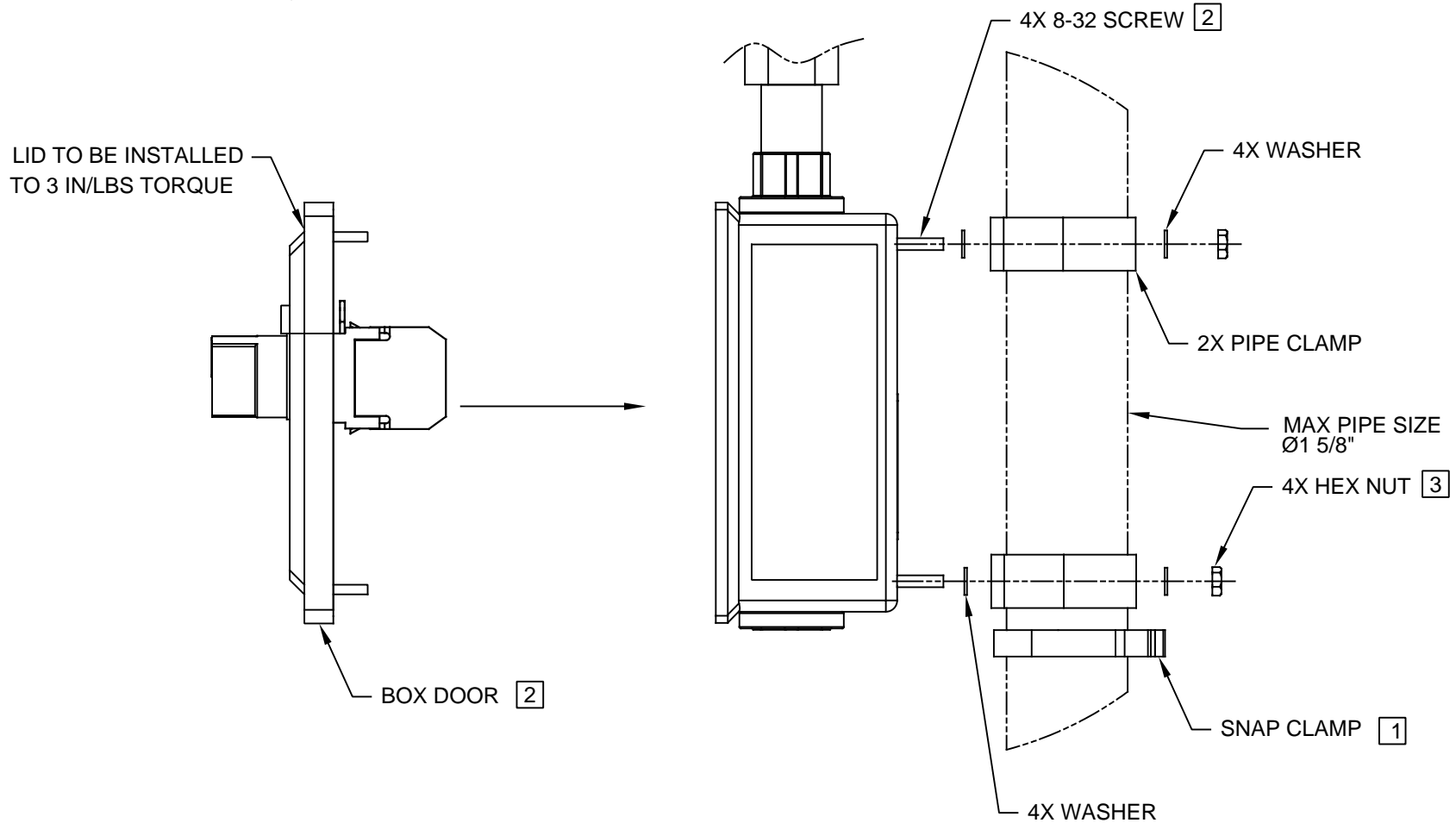


FLOW SWITCH MUST BE MOUNTED IN HORIZONTAL POSITION

		1455 KLEPPE LANE SPARKS, NEVADA 89431 (775) 359-4712 FAX (775) 359-7424 E-MAIL: HAWS@HAWS.CO.COM WEBSITE: WWW.HAWS.CO.COM	
		ECN NO. 4785 DRAWN: VWC APPROVED: FV	REVISED PER: ECN: 5232 DATE: 9/27/13 DATE: 11/22/17
PART NUMBER 0002080630.D			REVISION 5
SCALE: 1:1		DRAWING TYPE: INSTALLATION	SIZE: A SHEET 1 OF 2

NOTES:

- 1 SNAP CLAMP TO BE INSTALLED FIRST FOR VERTICAL SUPPORT.
- 2 SCREWS INSTALLED FROM FRONT, WITH BOX DOOR OFF.
- 3 NUTS TO BE INSTALLED TO A TORQUE OF 12 IN-LBS MAX.



CLAMP ASSEMBLY DETAIL

		1455 KLEPPE LANE SPARKS, NEVADA 89431 (775) 359-4712 FAX (775) 359-7424 E-MAIL: HAWS@HAWS.CO.COM WEBSITE: WWW.HAWS.CO.COM	
		ECN NO. 4785 DRAWN: VWC APPROVED: FV	REVISED PER: ECN: 5232 DATE: 9/26/13 DATE: 11/22/17
PART NUMBER 0002080630.D			REVISION 5
SCALE: 1:1		DRAWING TYPE: INSTALLATION	SIZE: A SHEET 2 OF 2