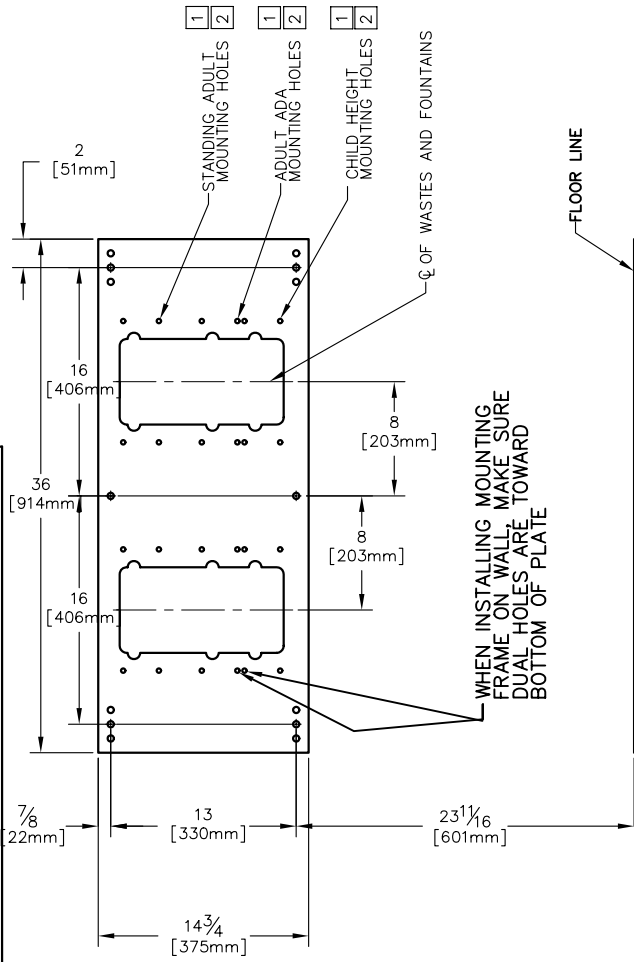
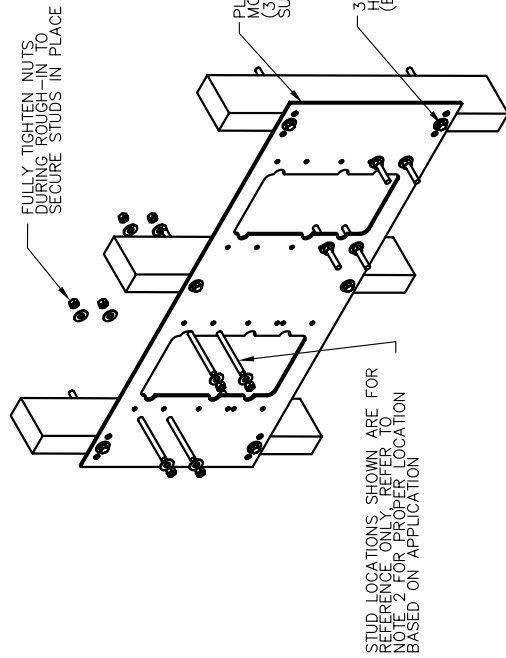
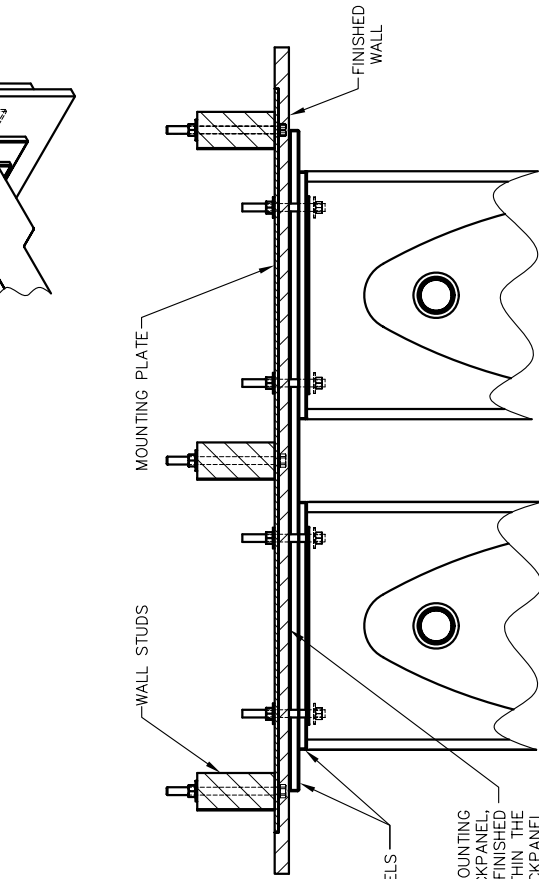
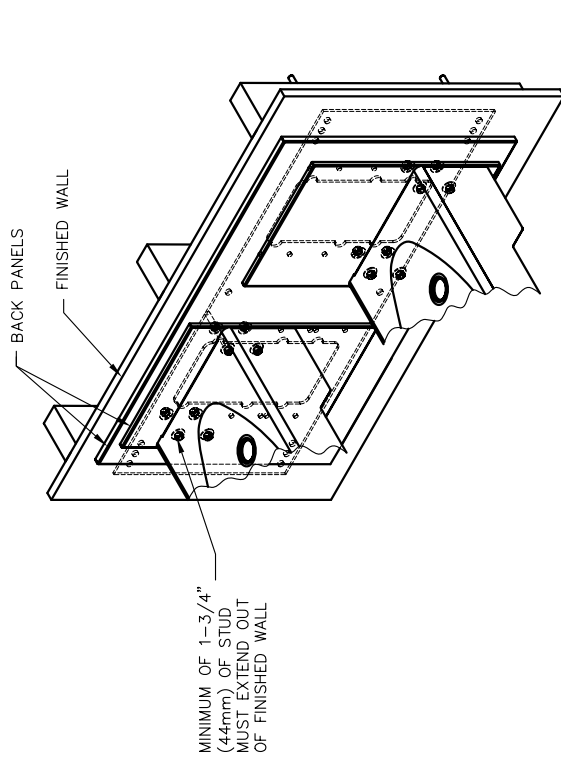


THIS DOCUMENT IS TRUE AND CORRECT AT TIME OF PUBLICATION. CONTINUED PRODUCT IMPROVEMENTS MAKE SPECIFICATIONS AND MEASUREMENTS SUBJECT TO CHANGE WITHOUT NOTICE.



NOTES:

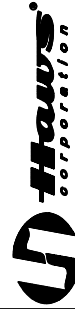
1. SEE 1117L INSTALLATION DRAWING (SHEET 1) FOR PLUMBING ROUGH-IN DIMENSIONS
2. SEE 1117L INSTALLATION DRAWING (SHEET 2) FOR DETAILED FOUNTAIN MOUNTING POSITIONS.



STUD LOCATIONS SHOWN ARE FOR REFERENCE ONLY. REFER TO NOTE 2 FOR PROPER LOCATION BASED ON APPLICATION

CAUTION

REGARDING CONCRETE/MASONRY WALL MOUNTING:
DO NOT SECURE MOUNTING PLATE TO SAME SIDE OF WALL AS FOUNTAIN. AVOID COMPROMISING INTEGRITY OF WALL WHEN ANCHORING FOUNTAIN. IT IS RECOMMENDED THAT INSTALLER CALL TECHNICAL SUPPORT IF THERE ARE ANY QUESTIONS AS TO HOW TO OBTAIN A PROPER ANCHOR IN CONCRETE/MASONRY WALLS. 1-800-766-5612



INFO FAX : 1-888-FAX-HAWS (1-888-329-4297)
1455 Kleppe Ln, Sparks NV, 89431
Phone: 775-359-4712 Fax: 775-359-7424
Haws Ag, Bachweg 3, CH-3401 Burgdorf Switzerland
Haws Mfg Pte Ltd 14 Sungai Kadut Loop Singapore 729531
e-mail: Haws@hawsco.com website: www.hawsco.com

REV. NO. 3890
DATE 12-17-06
APPROVED C. FENNER
DESIGNED PER DATE 12-17-06
BY DATE 12-17-06
MODEL(S) 6717
INFO. FAX. DOC. # 15278A00
SCALE: 1:1
DRAWING TYPE: INSTALLATION/FABRICATION
SHEET: 1 OF 1