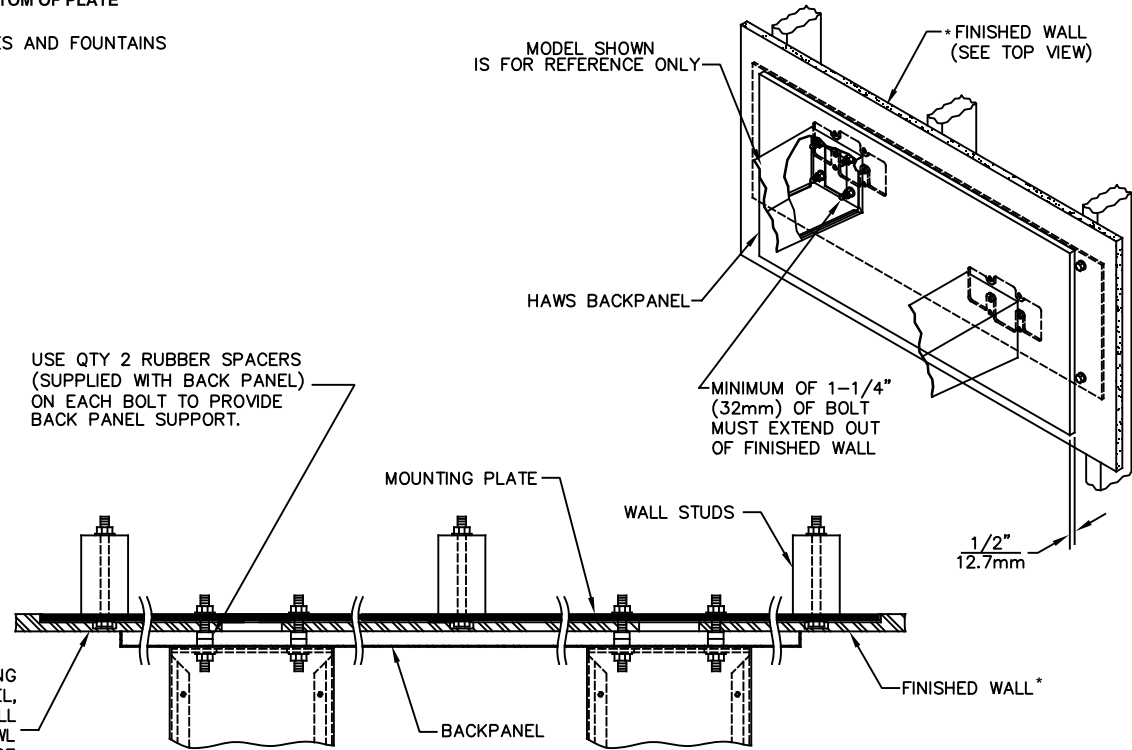
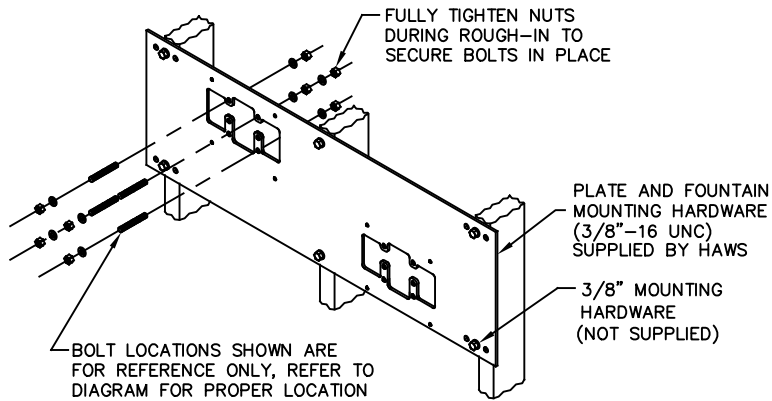


DIMENSION	MODEL	
	1011/HO/HPS	
"X"	25-1/2"[648mm]	
LOWER SUPPLY	28-3/4"[730mm]	
LOWER WASTE	27-7/8"[708mm]	
UPPER SUPPLY	33-3/4"[857mm]	
UPPER WASTE	32-7/8"[835mm]	

DIMENSION	MODEL	
	1119/HO	1119.14/HO
"X"	27-5/8"[702mm]	27-5/8"[702mm]
LOWER SUPPLY	29-5/8"[752mm]	29-5/8"[752mm]
LOWER WASTE	30-3/4"[781mm]	30-3/4"[781mm]
UPPER SUPPLY	35-3/8"[905mm]	35-3/8"[905mm]
UPPER WASTE	36-1/2"[927mm]	36-1/2"[927mm]

DIMENSION	MODEL	
	1119FR	
"X"	27-5/8"[702mm]	
SUPPLY	SEE FREEZE VALVE ROUGH-IN	
WASTE		

DIMENSION	MODEL	
	1117HO	
"X"	27" [686mm]	
LOWER SUPPLY	29-1/2"[749mm]	
LOWER WASTE	29-1/4"[743mm]	
UPPER SUPPLY	35-1/2"[902mm]	
UPPER WASTE	35-1/4"[895mm]	




USE QTY 2 RUBBER SPACERS (SUPPLIED WITH BACK PANEL) ON EACH BOLT TO PROVIDE BACK PANEL SUPPORT.

* FINISH WALL OVER MOUNTING PLATE AND BEHIND BACKPANEL, MAKE SURE THAT FINISHED WALL EXTENDS WITHIN THE BRACKET/BOWL MOUNTING HOLES (TO PROVIDE SURFACE AREA FOR RUBBER SPACERS TO CONTACT).

TOP VIEW

CAUTION
REGARDING CONCRETE/MASONRY WALL MOUNTING: DO NOT SECURE MOUNTING PLATE TO SAME SIDE OF WALL AS FOUNTAIN. AVOID COMPROMISING INTEGRITY OF WALL WHEN ANCHORING FOUNTAIN. IT IS RECOMMENDED THAT INSTALLER CALL TECHNICAL SUPPORT IF THERE ARE ANY QUESTIONS AS TO HOW TO OBTAIN A PROPER ANCHOR IN CONCRETE/MASONRY WALLS. 1-800-766-5612



Haws
Since 1906

1455 KLEPPE LANE
SPARKS, NEVADA 89431
(775) 359-4712 FAX (775) 359-7424
E-MAIL: HAWS@HAWSCO.COM
WEBSITE: WWW.HAWSCO.COM

ECN NO. REVISED PER BY:	MODEL(S)	PART NUMBER
ECN: 6148 JG		0002080023
DRAWN: C.J.L.	DATE: 04-29-93	CHKD.: JG
APPROVED: FV	DATE: 02/11/25	SCALE: N/A
DRAWING TYPE: INSTALLATION		SIZE: A
SHEET 1 OF 1		REVISION
		20