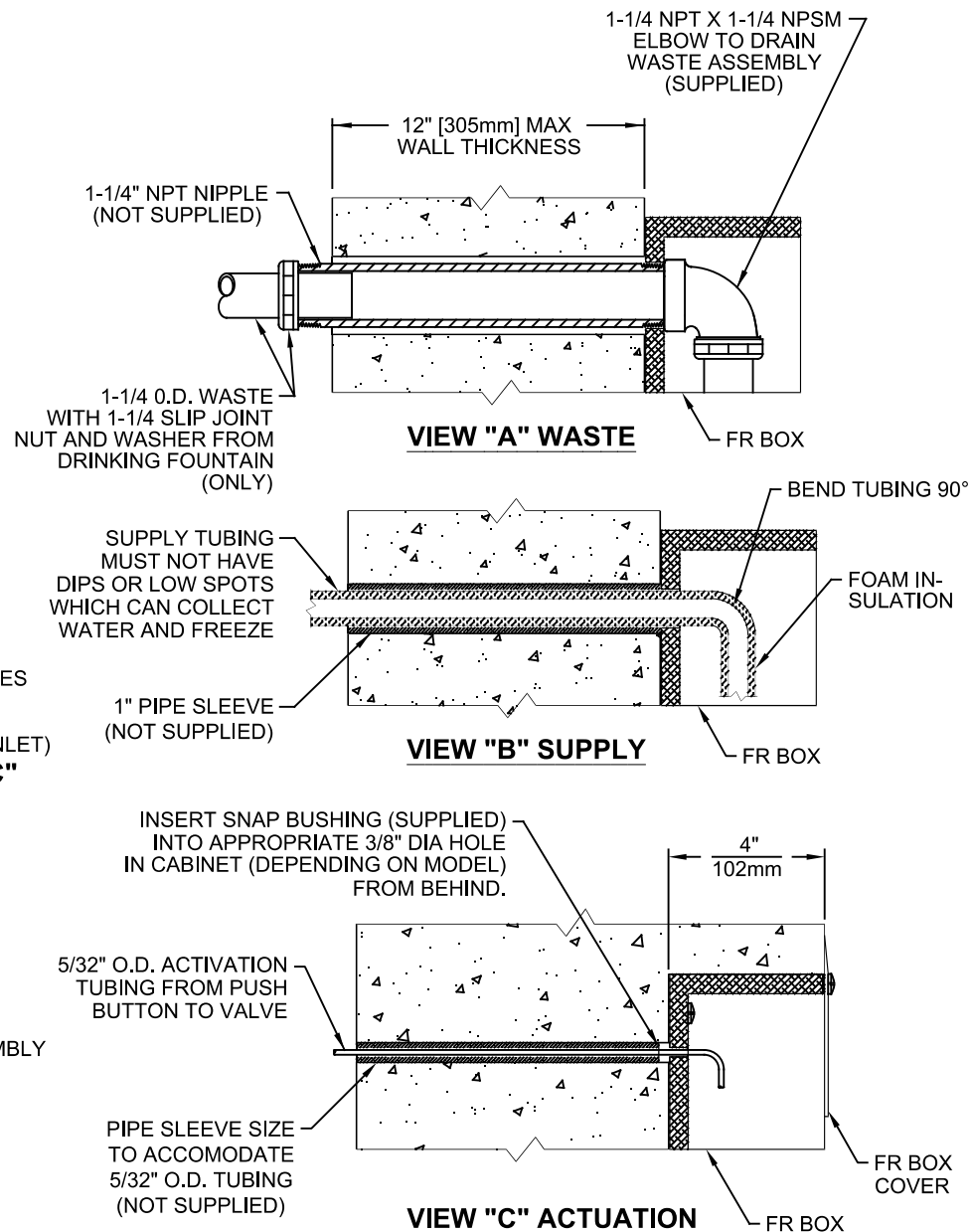
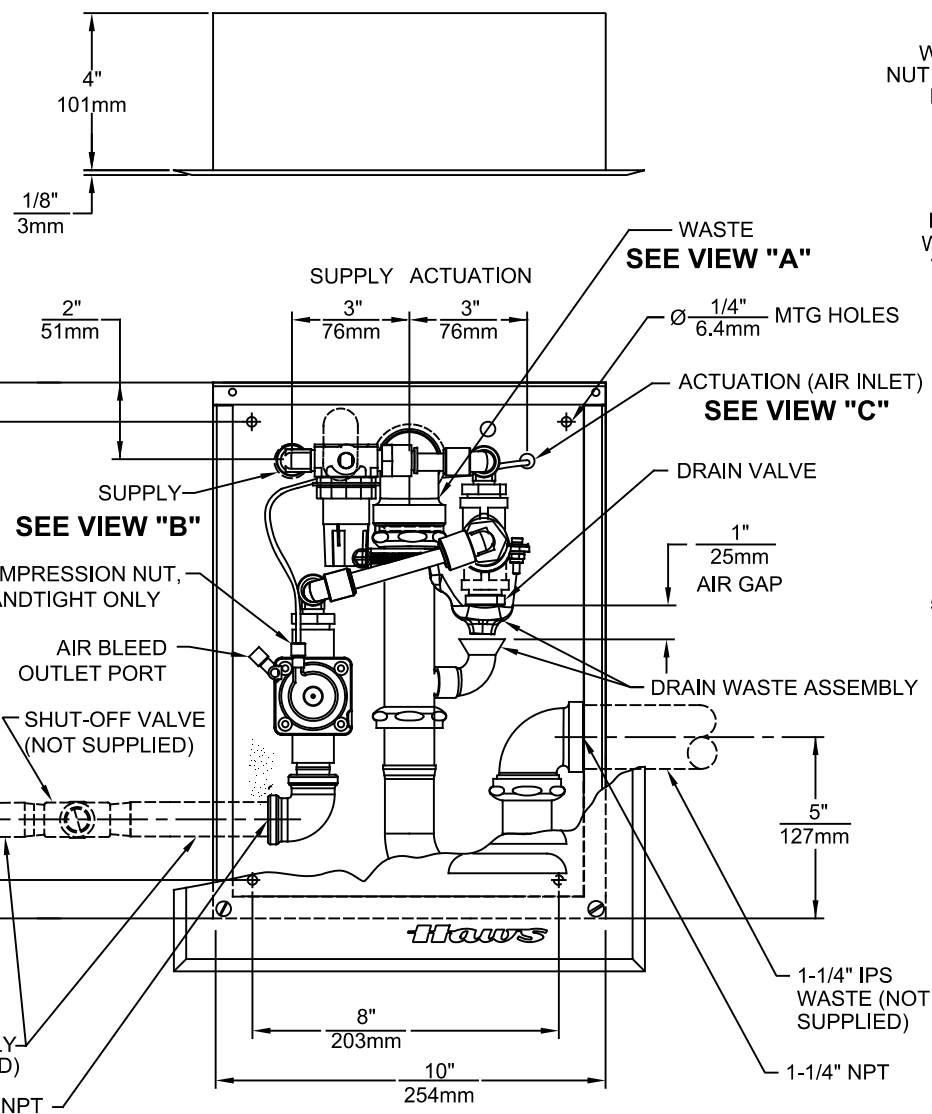



## NOTES:

1. UNIT MAY BE RECESSED MOUNTED IN WALL AS SHOWN  
IN VIEW "C" OR SURFACE MOUNTED AS SHOWN IN  
VIEWS "A" AND "B".
2. VALVE MUST BE INSTALLED IN SPACE THAT MAINTAINS  
A MINIMUM OF 50°F (10°C).
3. DRINKING FOUNTAIN AND BOTTLE FILLER MODELS 1109FR & 1920FR  
EACH REQUIRE A SEPARATE 6521FR UNIT. DUAL DRINKING FOUNTAIN  
MODEL 1119FR REQUIRES TWO SEPARATE 6521FR UNITS. THE MODELS  
LISTED HERE ARE AVAILABLE SEPARATELY OR AS PART OF PRODUCT BUNDLES.



				<b>Haws®</b> Since 1906				1455 KLEPPE LANE SPARKS, NEVADA 89431 (775) 359-4712 FAX (775) 359-7424 E-MAIL: HAWS@HAWS.CO.COM WEBSITE: WWW.HAWS.CO.COM			
ECN NO.		REVISED PER		BY:		MODEL(S)		6521FR		PART NUMBER	
ECN: 6011		FV		0002077820.D							
DRAWN:		DATE:		REVISION							
CJL		09/92		CHKD.:				20		1 OF 1	
JC											
APPROVED:		DATE:		SCALE:		DRAWING TYPE:		INSTALLATION		SIZE: A	
FV		07/30/24		1:5							