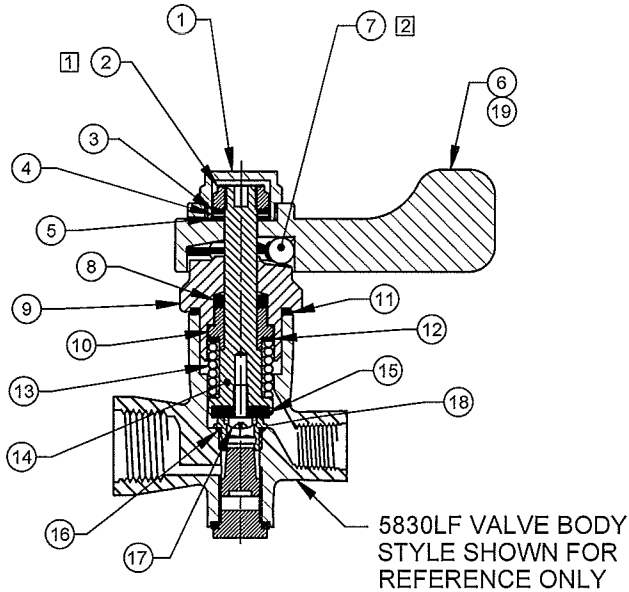


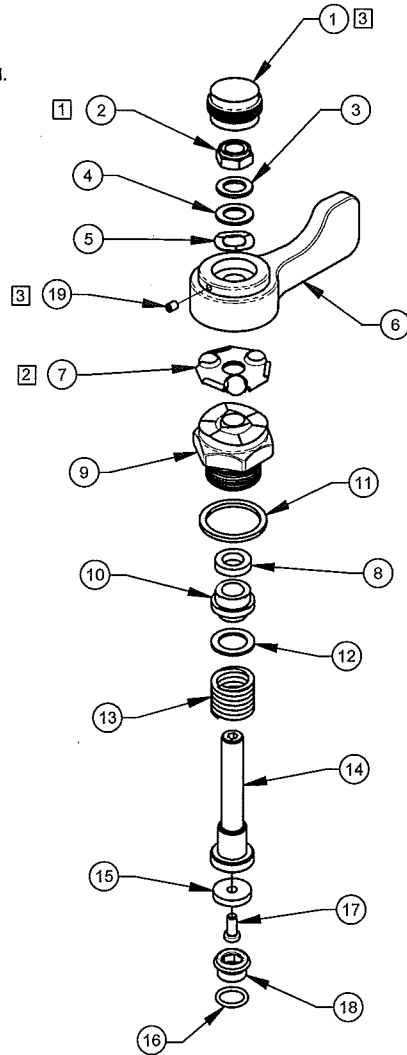
NOTES:

- 1 IF NEEDED, WHEN RE-ASSEMBLING VALVE TIGHTEN DOWN ON (EXISTING) 3/8"-24 LOCK NUT USING A 9/16" BOX WRENCH AND A 5/32" ALLEN WRENCH (TO KEEP VALVE STEM (ITEM 14) FROM TURNING UNTIL ACHIEVING A SLIGHT PLAY ON HANDLE. CAUTION: DO NOT OVER-TIGHTEN NUT. VALVE WILL LEAK.
- 2 LUBRICATE WITH GREASE BEFORE ASSEMBLY.
- 3 SECURE CAP (ITEM 1) WITH SET SCREW (ITEM 19) USING A 1/16" ALLEN WRENCH.



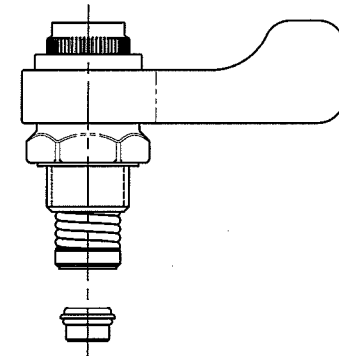
FOR MODELS:

- 5830LF
- 5051LF
- 5054LF
- 5054EG
- 5057LF
- 5060LF
- 6250LF



EXPLODED VIEW

ITEM	PART NO.	PART NUMBER
19	0005063885	SCREW, SET 6-32 UNC
18	0005208682	SEAT F/5830HST
17	0005064870	SCREW, 8-32 X 3/8"
16	0003981050	O-RING, .426 X .070 WALL
15	0006634576	WASHER, .660 X .170 X .125
14	0005532750	STEM, VALVE
13	0005425392	SPRING, .73 X 1.25 X 2.50mm
12	0006634380	WASHER, .75 X .494 X .040
11	0006634184	WASHER, 1.165 X .951 X .073
10	0002583484	GLAND
9	0000356123	BONNET, FAUCET
8	0002582902	GLAND PACKING
7	0000192993	BEARING SET
6	0003221210	HANDLE, LEVER F5054LF
5	0006626653	WASHER, WAVE 5/16"
4	0006633792	WASHER, .650 X .380 X .040
3	0006633596	WASHER, .625 X .390 X .048
2	0003801119	NUT, 3/8-24 UNF NYLON LOCK
1	0001464267	INDEX CAP



ASSEMBLED VIEW



Haws[®]

1455 KLEPPE LANE
SPARKS, NEVADA 89431
(775) 359-4712 FAX (756) 359-7424
E-MAIL: HAWS@HAWSCO.COM
WEBSITE: WWW.HAWSCO.COM

ECN NO.	REVISED PER BY:	MODEL(S)	PART NUMBER
	ECN: 4689 HM		0002080002
DRAWN: RTM	DATE: 02/23/06		DRAWING NO. 15246A00
APPROVED: [Signature]	DATE: 02/23/06		REV 2
SCALE: 1:1		DRAWING TYPE: INSTALLATION	SIZE: A SHEET 1 OF 1