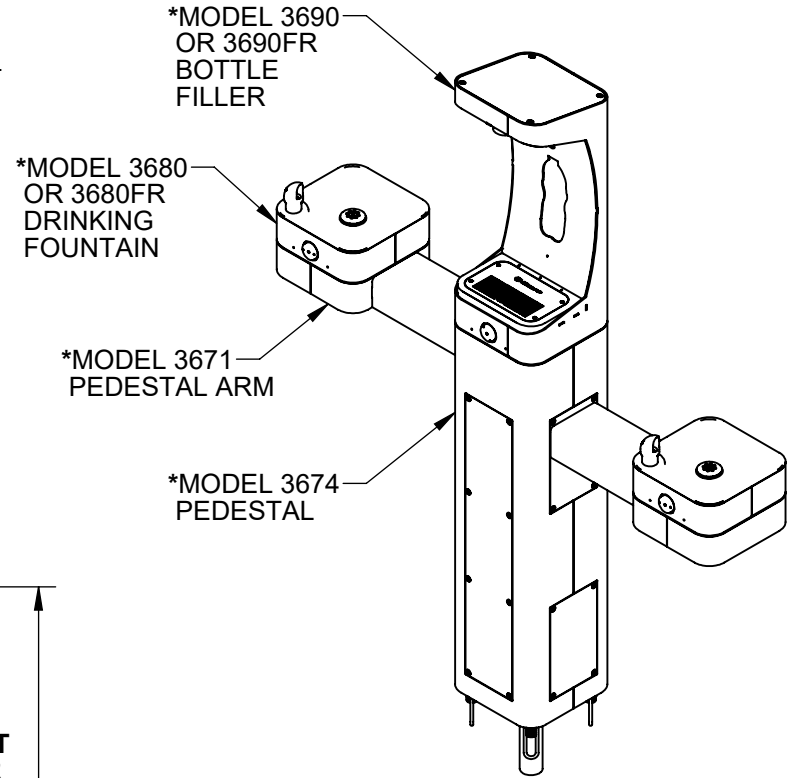
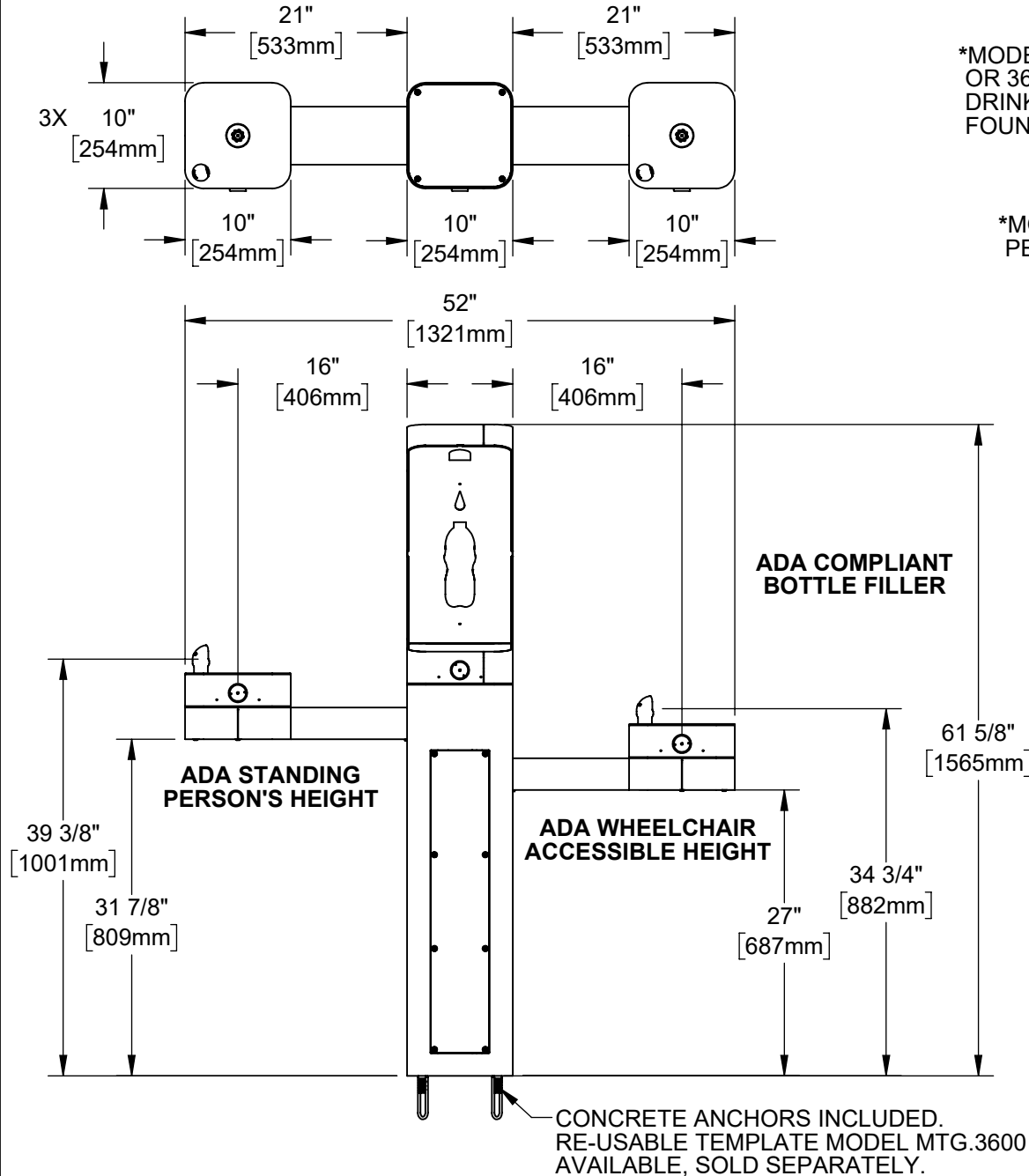


NOTES:
1. WHEN INSTALLING THIS UNIT, LOCAL, STATE, OR FEDERAL CODES SHOULD BE ADHERED TO.
INSTALL A TRAP IN THE WASTE LINE AND A SCREWDRIVER STOP IN THE SUPPLY LINE IF REQUIRED.



HAWS MODEL 36XX SERIES MODULAR OUTDOOR FOUNTAINS CAN BE FULLY COMPLIANT WITH THE FEDERAL 2010 AMERICANS WITH DISABILITIES ACT (ADA) ACCESSIBILITY REQUIREMENTS WHEN INSTALLED AS SHOWN HERE AND WHEN INSTALLED WITH PROPER CLEARANCES AND ACCESS. LOCATE THE PEDESTAL BASE WITH AT LEAST 8" OF CLEAR UNOBSTRUCTED HARDSCAPE BEHIND THE PEDESTAL. IT IS THE RESPONSIBILITY OF THE INSTALLER TO ADHERE TO LOCAL, STATE, AND FEDERAL CODES WHEN INSTALLING THIS UNIT. DISTANCE TO SURROUNDING OBJECTS, APPROACH SURFACES, ETC. SHOULD BE CONSIDERED.

***MODELS ARE SHOWN ASSEMBLED FOR REFERENCE ONLY. MUST BE PURCHASED SEPARATELY.**

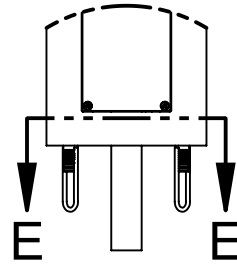
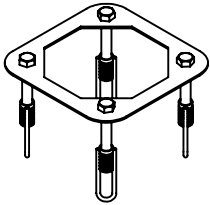


1455 KLEPPE LANE
SPARKS, NEVADA 89431
(775) 359-4712 FAX (775) 359-7424
E-MAIL: HAWS@HAWS.CO.COM
WEBSITE: WWW.HAWS.CO.COM

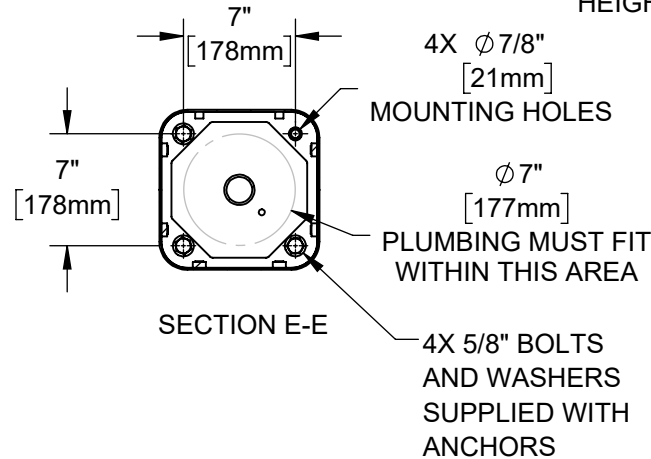
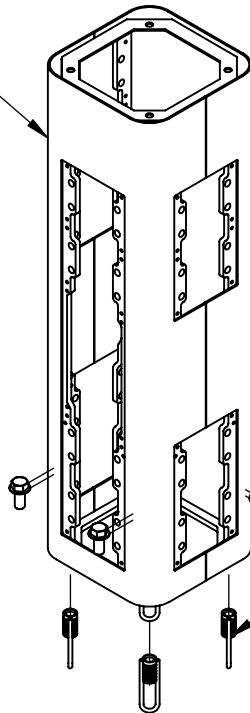
ECN: 5652	REV. ECN: 6229	BY: FV	MODEL(S)	PART NUMBER
DRAWN: DHP	DATE: 8/11/20	CHKD: KM	3671 / 3674 / 3680 / 3680FR / 3690 / 3690FR	0580001176
APPROVED: FV	DATE: 05/30/25	SCALE: 1:24	DRAWING TYPE: INSTALLATION	REVISION
			SIZE: A	2
				SHEET 1 OF 7

INSTALLATION INSTRUCTIONS

MODEL MTG.3600
(OPTIONAL)
TEMPLATE FOR
SPACING ANCHORS (INCLUDED)
DURING CONCRETE
POUR



MODEL 3674
PEDESTAL



4X 5/8" BOLTS AND
WASHERS (SUPPLIED)

4X CAST-IN ANCHORS
(SUPPLIED). SET AT
7" SQUARE SPACING
AND ORIENT AS SHOWN

MODEL 3674

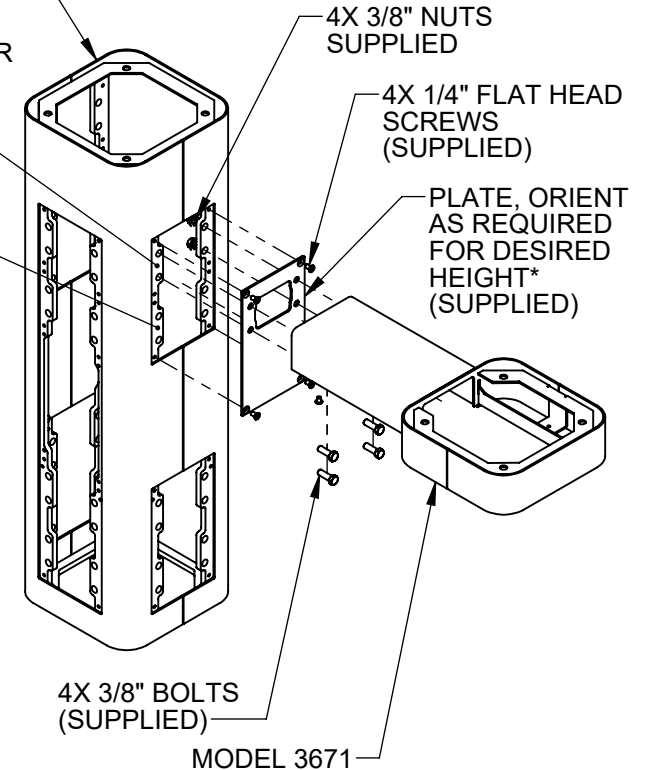
MOUNT PEDESTAL TO CONCRETE SLAB IN DESIRED ORIENTATION. SLAB TO BE 30" MINIMUM SQUARE AND 6" MINIMUM THICK (BY OTHERS). PLUMBING CAST IN CONCRETE MUST FIT IN 7" DIAMETER AREA CENTERED UNDER PEDESTAL LOCATION. FOR 36XXFR MODELS, SEE REQUIRED BURY VALVE (NOT SUPPLIED) INSTALLATION REQUIREMENTS ON SHEET 6.

NOTE: ALL PEDESTAL COVER PLATES INCLUDED.

MODEL 3674
(REFERENCE)

*FOUNTAIN AT
ADA WHEELCHAIR
HEIGHT

*FOUNTAIN AT
ADA CHILD
HEIGHT



4X 3/8" BOLTS
(SUPPLIED)

MODEL 3671

MODEL 3671 (SHOWN RIGHT SIDE)

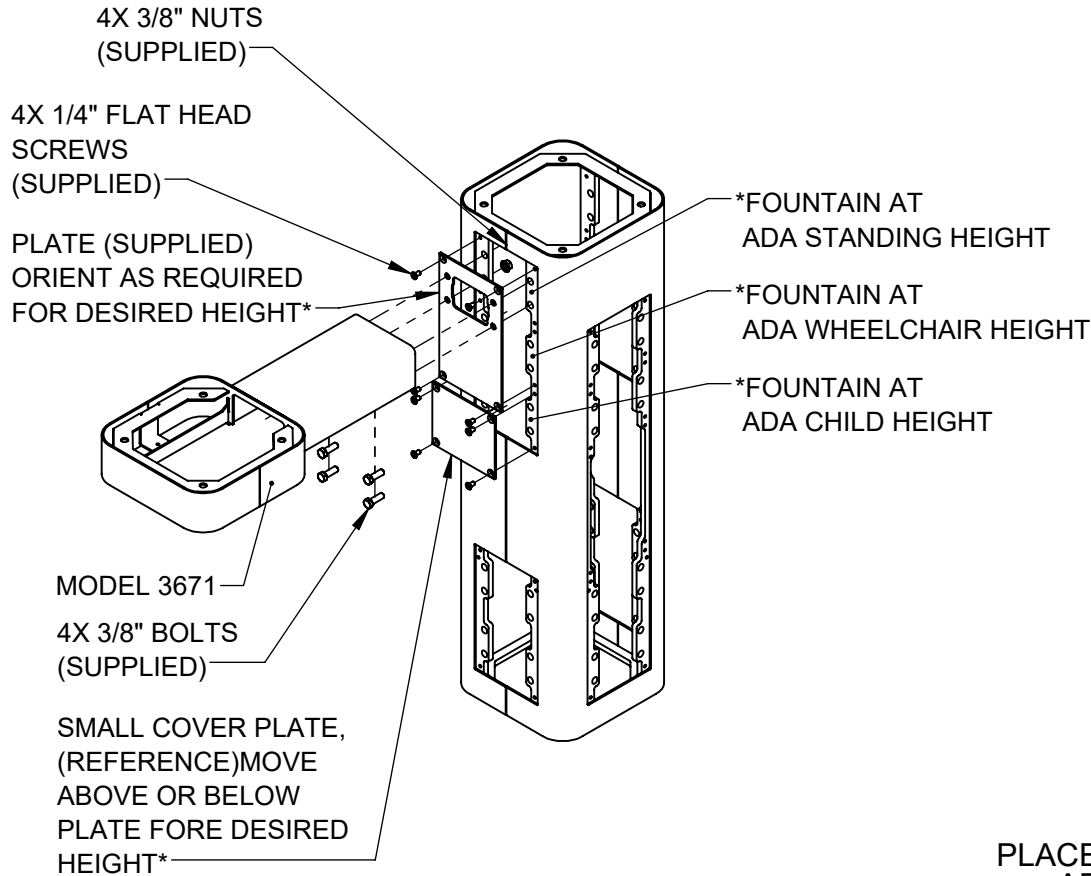
REMOVE BOTTOM COVER PLATES FROM ARM BY REMOVING 3 1/4" BUTTON HEAD SCREWS. INSTALL PEDESTAL ARM ON EITHER SIDE. MOUNTING PLATE CAN BE ORIENTED AS REQUIRED FOR DESIRED FOUNTAIN OR BOTTLE FILLER HEIGHT. USE 1/4" FLAT HEAD SCREWS (SUPPLIED) TO INSTALL PLATE. USE 3/8" BOLTS AND NUTS (SUPPLIED) AND TORQUE TO 18 FT-LBS TO INSTALL ARM.



1455 KLEPPE LANE
SPARKS, NEVADA 89431
(775) 359-4712 FAX (775) 359-7424
E-MAIL: HAWS@HAWS.CO.COM
WEBSITE: WWW.HAWS.CO.COM

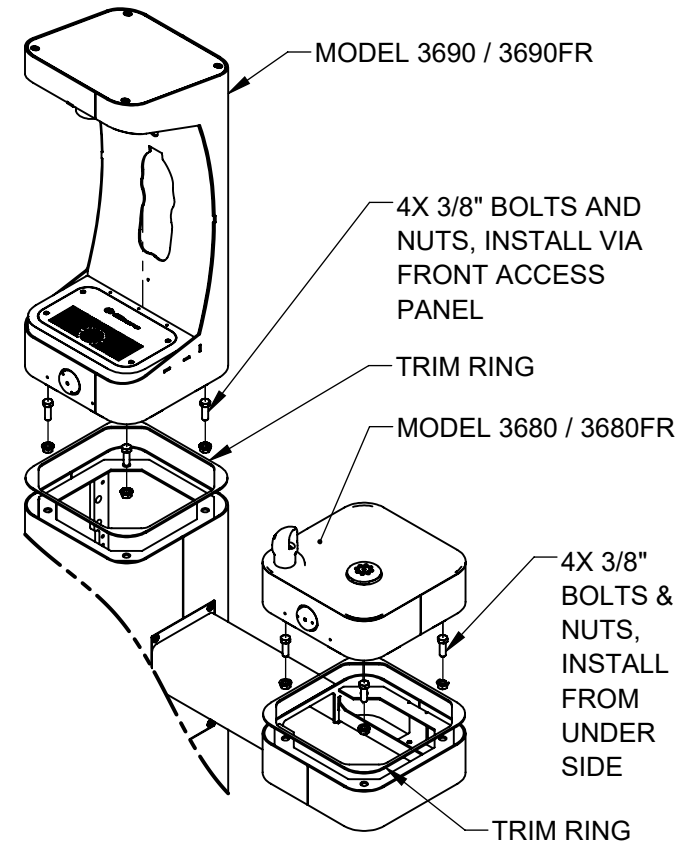
ECN: 5652	REV. ECN: 6229	BY: FV	MODEL(S)	PART NUMBER
DRAWN: DHP	DATE: 6/11/20	CHKD: KM	3671 / 3674 / 3680 / 3680FR / 3690 / 3690FR	0580001176
APPROVED: FV	DATE: 05/30/25	SCALE: 1:24	DRAWING TYPE: INSTALLATION	REVISION
				2
				SHEET 2 OF 7

INSTALLATION INSTRUCTIONS



MODEL 3671 (SHOWN LEFT SIDE)

REMOVE BOTTOM COVER PLATES FROM ARM BY REMOVING 3 1/4" BUTTON HEAD SCREWS. INSTALL PEDESTAL ARM ON EITHER SIDE. MOUNTING PLATE CAN BE ORIENTED AS REQUIRED FOR DESIRED FOUNTAIN OR BOTTLE FILLER HEIGHT. USE 1/4" FLAT HEAD SCREWS (SUPPLIED) TO INSTALL PLATE. USE 3/8" BOLTS AND NUTS (SUPPLIED) AND TORQUE TO 18 FT-LBS TO INSTALL ARM.



3680 / 3680FR / 3690 / 3690FR

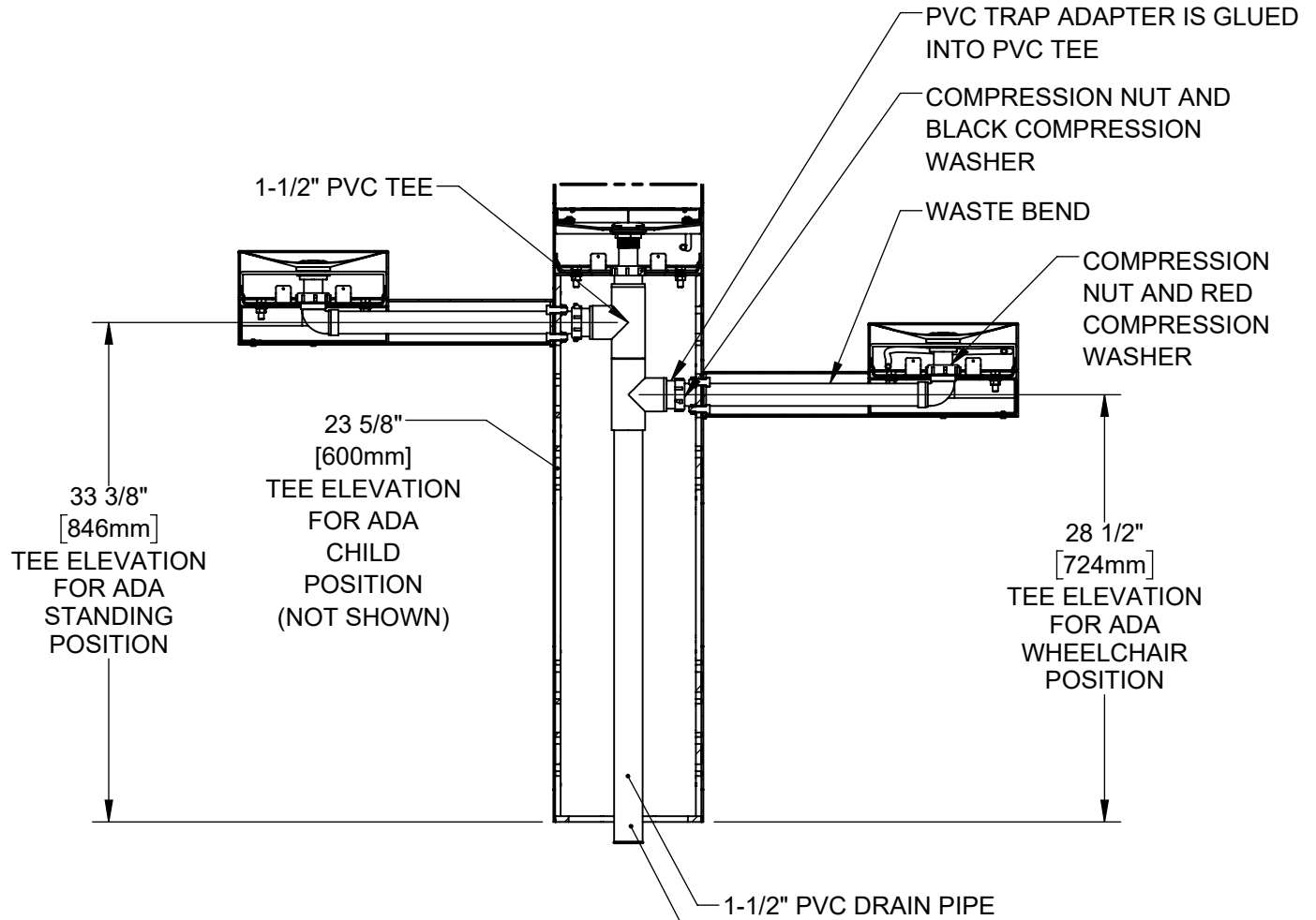
PLACE SUPPLIED SQUARE TRIM RING ON PEDESTAL OR ARM. PLACE MODEL 3680/3680FR FOUNTAIN OR 3690/3690FR BOTTLE FILLER ON PEDESTAL OR ARM(S) ORIENTED AS DESIRED AND SECURE LOOSELY WITH SUPPLIED 3/8" BOLTS AND NUTS AS SHOWN. CAREFULLY CENTER TRIM RING AND MODEL AND TIGHTEN BOLTS/NUTS TO 18 FT-LBS. **NOTE: IT IS POSSIBLE TO ASSEMBLE THESE COMPONENTS SUCH THAT THE RESULT DOES NOT MEET ADA OR OTHER REQUIREMENTS. WHEN INSTALLING THIS UNIT, LOCAL, STATE, OR FEDERAL CODES SHOULD BE ADHERED TO.**



1455 KLEPPE LANE
SPARKS, NEVADA 89431
(775) 359-4712 FAX (775) 359-7424
E-MAIL: HAWS@HAWS.CO.COM
WEBSITE: WWW.HAWS.CO.COM

ECN: 5652	REV. ECN: 6229	BY: FV	MODEL(S)	PART NUMBER
DRAWN: DHP	DATE: 8/11/20	CHKD: KM	3671 / 3674 / 3680 / 3680FR / 3690 / 3690FR	0580001176
APPROVED: FV	DATE: 05/30/25	SCALE: 1:24	DRAWING TYPE: INSTALLATION	REVISION
			SIZE: A	2
				SHEET 3 OF 7

INSTALLATION INSTRUCTIONS



TYPICAL DRAIN INSTALLATION

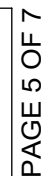
INSTALL SUPPLIED DRAIN COMPONENTS AS SHOWN. RED COMPRESSION WASHERS ADAPT FROM 1-1/4" TO 1-1/2" AT EACH DRAIN TAIL PIECE. BLACK COMPRESSION WASHERS ARE USED IN TRAP ADAPTERS AT TEES. INCLUDED TRAP ADAPTERS MUST BE CEMENTED INTO PVC FITTINGS WHERE A WASTE BEND OR TAILPIECE ENTERS A 1-1/2" PVC FITTING (TEE OR COUPLER). CUT A SHORT SECTION OF THE DRAIN PIPE TO CONNECT THE TWO TEES IF REQUIRED. USE APPROPRIATE PVC CEMENT TO MAKE SOLVENT CEMENT CONNECTIONS. TRIM WASTE BEND AND/OR TAIL PIECE LENGTH IF REQUIRED. NOTE THAT EXTRA PARTS MAY BE INCLUDED TO FACILITATE DIFFERENT CONFIGURATIONS OF THIS FOUNTAIN.



1455 KLEPPE LANE
SPARKS, NEVADA 89431
(775) 359-4712 FAX (775) 359-7424
E-MAIL: HAWS@HAWS.CO.COM
WEBSITE: WWW.HAWS.CO.COM

ECN: 5652	REV. ECN: 6229	BY: FV	MODEL(S)	PART NUMBER
DRAWN: DHP	DATE: 8/11/20	CHKD: KM	3671 / 3674 / 3680 / 3680FR / 3690 / 3690FR	0580001176
APPROVED: FV	DATE: 05/30/25	SCALE: 1:24	DRAWING TYPE: INSTALLATION	REVISION
			SIZE: A	2
				SHEET 4 OF 7

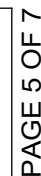
PAGE 5 OF 7



PAGE 5 OF 7

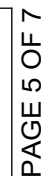
PAGE 5 OF 7

PAGE 5 OF 7



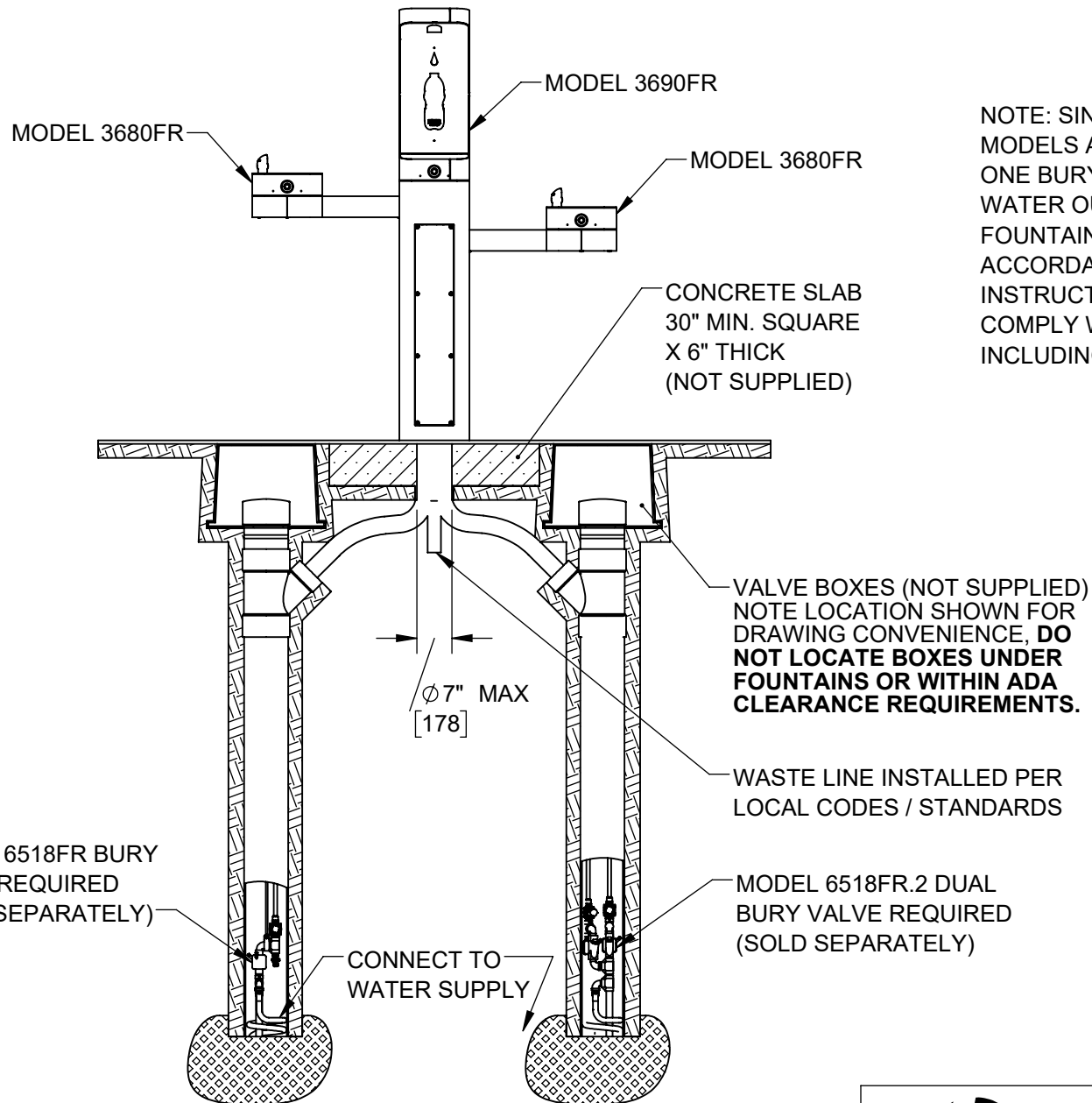
PAGE 5 OF 7

PAGE 5 OF 7



PAGE 5 OF 7

PAGE 5 OF 7



NOTE: SINGLE OR DUAL BURY VALVE MODELS AVAILABLE (SOLD SEPARATELY). ONE BURY VALVE IS REQUIRED PER WATER OUTLET NOZZLE ON THE FOUNTAIN. INSTALL BURY VALVES IN ACCORDANCE WITH MANUFACTURER'S INSTRUCTIONS. INSTALLATION MUST COMPLY WITH LOCAL CODES /STANDARDS, INCLUDING ADA CODES IF APPLICABLE.

VALVE BOXES (NOT SUPPLIED)
NOTE LOCATION SHOWN FOR DRAWING CONVENIENCE, **DO NOT LOCATE BOXES UNDER FOUNTAINS OR WITHIN ADA CLEARANCE REQUIREMENTS.**

WASTE LINE INSTALLED PER LOCAL CODES / STANDARDS

MODEL 6518FR.2 DUAL BURY VALVE REQUIRED (SOLD SEPARATELY)

MODEL 6518FR BURY VALVE REQUIRED (SOLD SEPARATELY)

CONNECT TO WATER SUPPLY

Ø 7" MAX
[178]

36XXFR GENERAL BURY VALVE LAYOUT (FOR REFERENCE ONLY)

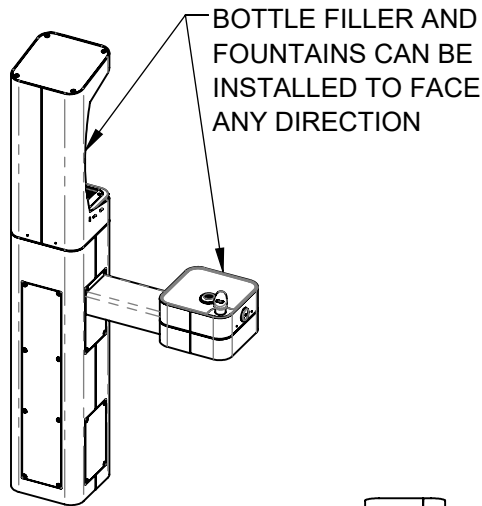


1455 KLEPPE LANE
SPARKS, NEVADA 89431
(775) 359-4712 FAX (775) 359-7424
E-MAIL: HAWS@HAWS.CO.COM
WEBSITE: WWW.HAWS.CO.COM

ECN: 5652	REV. ECN: 6229	BY: FV	MODEL(S)	PART NUMBER
DRAWN: DHP	DATE: 8/11/20	CHKD: KM	3671 / 3674 / 3680 / 3680FR / 3690 / 3690FR	0580001176
APPROVED: FV	DATE: 05/30/25	SCALE: 1:24	DRAWING TYPE: INSTALLATION	REVISION 2
			SIZE: A	SHEET 6 OF 7

NOTES ON OPTIONAL CONFIGURATIONS

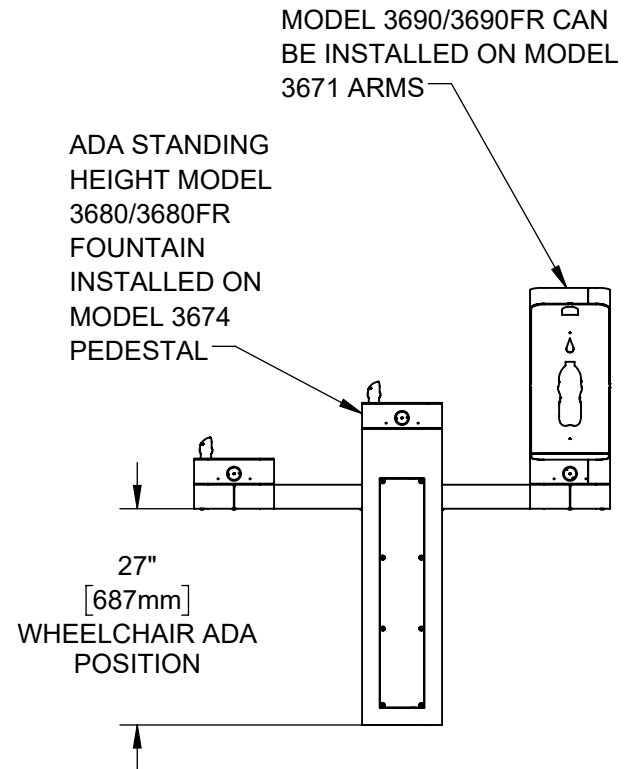
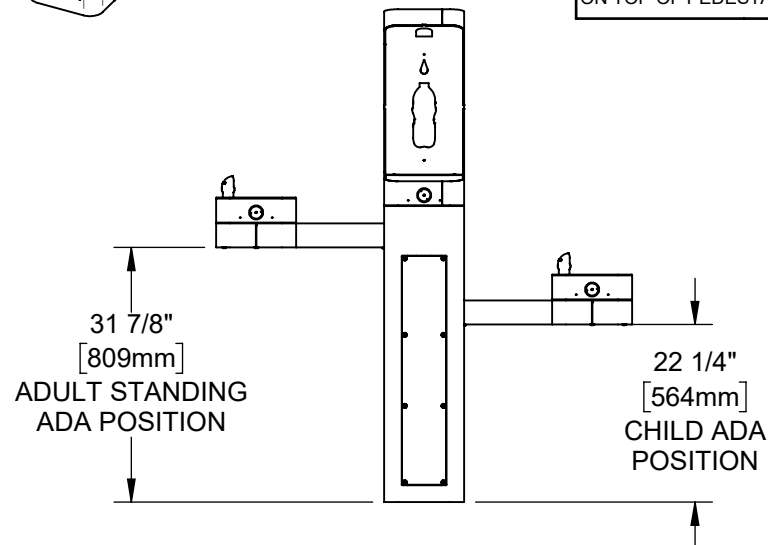
HAWS 3600 SERIES OUTDOOR FOUNTAINS ARE MODULAR AND CAN BE ASSEMBLED AND CONFIGURED MANY DIFFERENT WAYS. DISPLAYED HERE ARE A FEW EXAMPLES. IT IS POSSIBLE TO CONFIGURE COMPONENTS SUCH THAT THE RESULTING FOUNTAIN/BOTTLE FILLER DOES NOT COMPLY WITH ADA REGULATIONS. IT IS THE RESPONSIBILITY OF THE INSTALLER TO UNDERSTAND LOCAL, STATE, AND FEDERAL REGULATIONS AS APPLICABLE IF INSTALLING THIS FOUNTAIN IN CONFIGURATIONS OTHER THAN THAT INDICATED ON PAGE 1.



ADA ARM HEIGHT POSITION OPTIONS				
	LEFT SIDE*	RIGHT SIDE*	ARM HEIGHT (LOWER EDGE)	BUBBLER NOZZLE HEIGHT
STANDING ADA	YES (STD)	NO	31-7/8 [809 mm]	39-3/8 [999 mm]**
WHEELCHAIR ADA	YES	YES (STD)	27 [687 mm]	34-5/8 [878 mm]
CHILD ADA	YES	YES	22-1/4 [566 mm]	29-7/8 [757 mm]

* RIGHT AND LEFT CAN BE REVERSED IF PEDESTAL IS ROTATED 180°.

**NOZZLE HEIGHT IS 41-1/2" WHEN FOUNTAIN IS INSTALLED ON TOP OF PEDESTAL.



1455 KLEPPE LANE
SPARKS, NEVADA 89431
(775) 359-4712 FAX (775) 359-7424
E-MAIL: HAWS@HAWS.CO.COM
WEBSITE: WWW.HAWS.CO.COM

ECN: 5652	REV. ECN: 6229	BY: FV	MODEL(S)		PART NUMBER
DRAWN: DHP	DATE: 8/11/20	CHKD: KM	3671 / 3674 / 3680 / 3680FR / 3690 / 3690FR		0580001176
APPROVED: FV	DATE: 05/30/25	SCALE: 1:24	DRAWING TYPE: INSTALLATION	SIZE: A	REVISION
					2
					SHEET 7 OF 7