

(NOTES CONTINUED ON SHEET 2)



1455 KLEPPE LANE  
SPARKS, NEVADA 89431  
(775) 359-4712 FAX (775) 359-7424  
E-MAIL: [HAWS@HAWSCO.COM](mailto:HAWS@HAWSCO.COM)  
WEBSITE: [WWW.HAWSCO.COM](http://WWW.HAWSCO.COM)

ECN NO.:	REVISED PER:	BY:	MODEL(S)		PART NUMBER	
-	ECN: 5968	FV	3500/3500D		0002077448.D	
DRAWN:	DATE:	CHK'D:			REVISION	
F. VASQUEZ	02-04-99	JC			17	
APPROVED:	DATE:	SCALE: 1:13		DRAWING TYPE:	INSTALLATION	SIZE: A
FV	04/17/24					SHEET 1 OF 2

4 SLIDE DOWELS ON DOG BOWL INTO HOLES OF PEDESTAL AND ROTATE UPWARD.

5 INSTALL 7/16-14UNC NUT ON STUD AND TIGHTEN 3/4 TURN PAST HAND TIGHT.

6 BOND JOINTS WITH PVC CEMENT AND PRIMER.

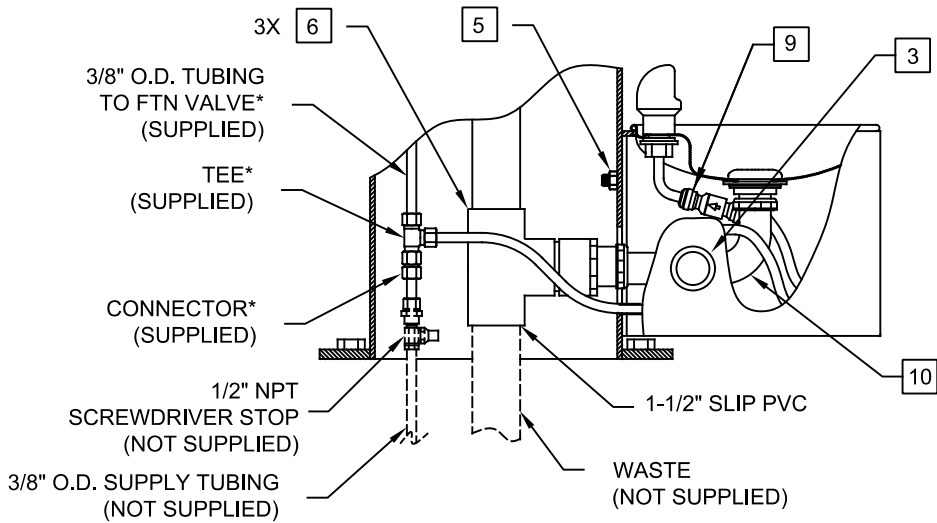
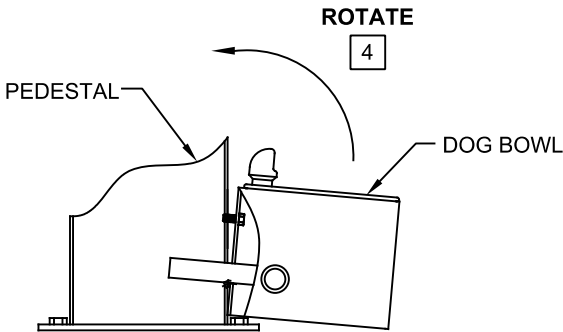
7. APPLY SUPPLY HOSE AND WASTE LINE.

8. TEST SYSTEM AFTER ASSEMBLY.

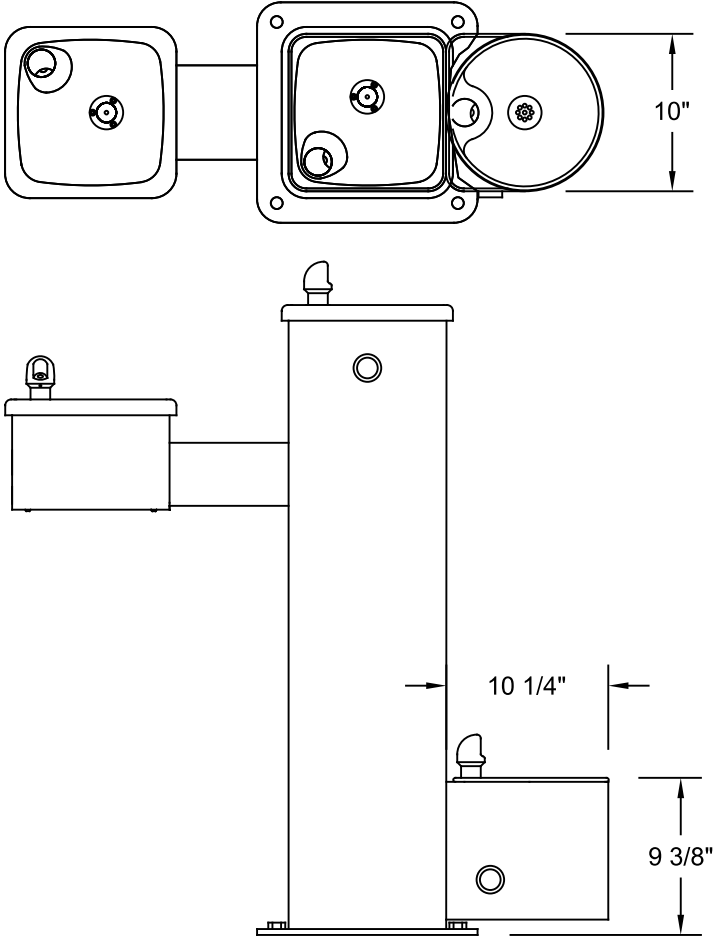
9 A CHECK VALVE IS INSTALLED IN THIS LOCATION TO PREVENT CROSS CONNECTION BETWEEN BUBBLERS.

10 NOTE: DRAINAGE ASSEMBLY SLIDES VERTICALLY ON HOLDER. UPON COMPLETION OF INSTALLATION, PUSH UP ON BOTTOM OF ELBOW TO ENSURE POSITIVE DRAINAGE OF WASTE.

11 MOUNTING HARDWARE NOT SUPPLIED. SEE PARTS BREAKDOWN DRAWING FOR HARDWARE SUPPLIED WITH EACH OPTIONAL KIT.



**\*NOTE: TEE SHOWN ASSEMBLED FOR REFERENCE ONLY. POSITION TEE AND TRIM TUBING AS NEEDED TO FIT INSTALLATION APPLICATION.**



**MODEL 3500D SHOWN  
(SEE SHEET 1 FOR MODEL 3500)**



1455 KLEPPE LANE  
SPARKS, NEVADA 89431  
(775) 359-4712 FAX (775) 359-7424  
E-MAIL: HAWS@HAWS.CO.COM  
WEBSITE: WWW.HAWS.CO.COM

ECN NO.	REVISED PER	BY:	MODEL(S)	PART NUMBER
	ECN: 5968	FV		0002077448.D
DRAWN:	DATE:	CHKD.:		REVISION
M.F.	06-06-00	JC	3500/3500D	17
APPROVED:	DATE:		SCALE: 1:12	DRAWING TYPE: INSTALLATION
FV	04/17/24		SIZE: A	SHEET 2 OF 2